

Roberts County.

BLK 2

Block No. 2. B.S. & F.

BLK 3

194	193
169	168
170	167
171	166
172	165
173	164
174	163
175	162
176	161
177	160
178	159
179	158
180	157

211	210
212	209
213	208
214	207
215	206
216	205
217	204
218	203
219	202
220	201
221	200
222	199
223	198
224	197
225	196

54	37
53	38
52	39
51	40
50	41

33	22	15	4	20	19	18	17	16
32	23	14	5	21	22	23	24	25

BLK. B3.
High from which E. Johnsons
mill was 550 ft.

Gray County

Donley County

evils. prob. old part

Evans

Rockwall County School Land

Evans

C. O. & G. Ry.

BLK. E. D & P Ry. Co.

J Seibel

2

White Fish Cr.

Rock Cr.

Skillet Cr.

McClelland Cr.

North Fork Red River

Sweetwater

Graham Cr.

Wheeler County

Large Rock mka on NE. H.
S.E. W. SW. & NW. of NW. 1/4

Large earth mka + Do. 1/2 acre Post
mka. on NE. 1/4. S.E.C. S.W.
D. & P. Ry. Co. Oak Thicket mka.
Do. S.W. 1/4. Do. S.W.

E. R. Clark

Clarendon

Texas.

KOBERALD
BUREAU

Douglas County

Small
Lumber
Co

M. J. ...
M. J. ...
M. J. ...

Gray 15
Gray Co. Bdry. line
County 33913

BK 11B
BK 12B

BK 13A
BK 14A

Horton Co.

Horton Co.

BK 15A
BK 16A

BK 17A
BK 18A

Merrill County

Roberts County

194	193	BLK 2										13
169	168	BLK 3										5
170	167	BLK No. 2 B S + F										4
171	166											74
172	165											71
173	164											70
174	163											65
175	162											64
176	161											49
177	160											48
178	159											25
179	158											24
180	157											1

A large st. made 7' on NE side. W on SE side. Co. on SW side. & R on NW side. also 3/4 on

211	210	BLK. A9										41	40
212	209											20	21
213	208											11	10
214	207											61	70
215	206											60	51
216	205											41	50
217	204											40	31
218	203											21	30
219	202											20	11
220	201											1	10
221	200											120	121
222	199											115	114
223	198											94	95
224	197											89	88
225	196											68	69
54	37											63	62
53	38											42	43
52	39											65	64
51	40	BLK. B3										52	51
50	41											48	39
												38	37
												36	37
												37	36
												38	37
												39	38
												40	39
												41	40
												42	41
												43	42
												44	43
												45	44
												46	45
												47	46
												48	47
												49	48
												50	49
												51	50
												52	51
												53	52
												54	53
												55	54
												56	55
												57	56
												58	57
												59	58
												60	59
												61	60
												62	61
												63	62
												64	63
												65	64
												66	65
												67	66
												68	67
												69	68
												70	69
												71	70
												72	71
												73	72
												74	73
												75	74
												76	75
												77	76
												78	77
												79	78
												80	79
												81	80
												82	81
												83	82
												84	83
												85	84
												86	85
												87	86
												88	87
												89	88
												90	89
												91	90
												92	91
												93	92
												94	93
												95	94
												96	95
												97	96
												98	97
												99	98
												100	99

Gray County

North Fork Red River

Clelland Cr

Rockwall County School Land

Choctaw Oklahoma & Gulf Ry

BLK. E

J. Siedel Dry P Ry. Co.

Dorley County

Berden Cr

Rock Cr

White Fish Cr

Skillet Cr

Carson County

H & C Ry Co

H & C N. BLK. B3

Stone Mt. 2 1/2 M. Lager 5 1/2 ft high from mission. Ed. Johnson's wind mill. Mrs. S. S. Jones

Large earth m. & B. 1/2 ave. Post m. W. on 71. E. Side C. on S.E. side. D. on S.W. Side & Corn N.W. Side From which oak thicker by N 23 1/2 E. 100 S. L. W. 100 S 1/2 W & 100 S 26 W.

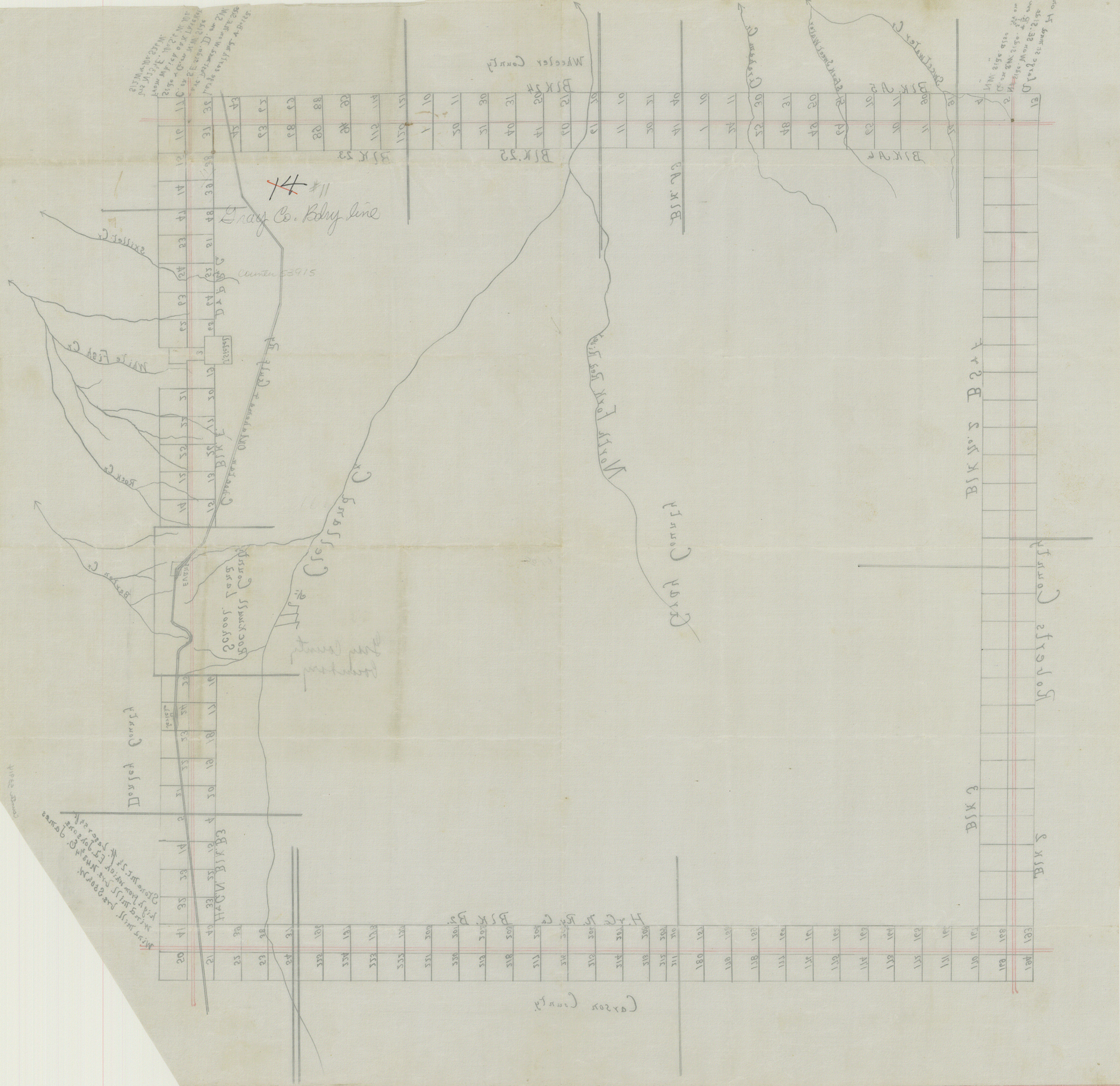
20	41	35	39	47	2	31	35	33	37	39	11	10
21	40	33	35	40	4	30	32	34	36	38	11	10
25	30											
23	38											
24	37											
330	320											
334	324											
332	322											
336	326											
342	332											
348	338											
354	344											
360	350											
366	356											
372	362											
378	368											
384	374											
390	380											
396	386											
402	392											
408	398											
414	404											
420	410											
426	416											
432	422											
438	428											
444	434											
450	440											
456	446											
462	452											
468	458											
474	464											
480	470											
486	476											
492	482											
498	488											
504	494											
510	500											
516	506											
522	512											
528	518											
534	524											
540	530											
546	536											
552	542											
558	548											
564	554											
570	560											
576	566											
582	572											
588	578											
594	584											
600	590											
606	596											
612	602											
618	608											
624	614											
630	620											
636	626											
642	632											
648	638											
654	644											
660	650											
666	656											
672	662											
678	668											
684	674											
690	680											
696	686											
702	692											
708	698											
714	704											
720	710											
726	716											
732	722											
738	728											
744	734											
750	740											
756	746											
762	752											
768	758											
774	764											
780	770											
786	776											
792	782											
798	788											
804	794											
810	800											
816	806											
822	812											
828	818											
834	824											
840	830											
846	836											
852	842											
858	848											
864	854											
870	860											
876	866											
882	872											
888	878											
894	884											
900	890											
906	896											
912	902											
918	908											
924	914											
930	920											
936	926											
942	932											
948	938											
954	944											
960	950											
966	956											
972	962											
978	968											
984	974											
990	980											
996	986											
1002	992											

Carson County

B1K 3
B1K 2
B1K 1
B1K 4
B1K 5
B1K 6
B1K 7
B1K 8
B1K 9
B1K 10
B1K 11
B1K 12
B1K 13
B1K 14
B1K 15
B1K 16
B1K 17
B1K 18
B1K 19
B1K 20
B1K 21
B1K 22
B1K 23
B1K 24
B1K 25
B1K 26
B1K 27
B1K 28
B1K 29
B1K 30
B1K 31
B1K 32
B1K 33
B1K 34
B1K 35
B1K 36
B1K 37
B1K 38
B1K 39
B1K 40
B1K 41
B1K 42
B1K 43
B1K 44
B1K 45
B1K 46
B1K 47
B1K 48
B1K 49
B1K 50
B1K 51
B1K 52
B1K 53
B1K 54
B1K 55
B1K 56
B1K 57
B1K 58
B1K 59
B1K 60
B1K 61
B1K 62
B1K 63
B1K 64
B1K 65
B1K 66
B1K 67
B1K 68
B1K 69
B1K 70
B1K 71
B1K 72
B1K 73
B1K 74
B1K 75
B1K 76
B1K 77
B1K 78
B1K 79
B1K 80
B1K 81
B1K 82
B1K 83
B1K 84
B1K 85
B1K 86
B1K 87
B1K 88
B1K 89
B1K 90
B1K 91
B1K 92
B1K 93
B1K 94
B1K 95
B1K 96
B1K 97
B1K 98
B1K 99
B1K 100

150
145
140
135
130
125
120
115
110
105
100
95
90
85
80
75
70
65
60
55
50
45
40
35
30
25
20
15
10
5
0
-5
-10
-15
-20
-25
-30
-35
-40
-45
-50
-55
-60
-65
-70
-75
-80
-85
-90
-95
-100

150
145
140
135
130
125
120
115
110
105
100
95
90
85
80
75
70
65
60
55
50
45
40
35
30
25
20
15
10
5
0
-5
-10
-15
-20
-25
-30
-35
-40
-45
-50
-55
-60
-65
-70
-75
-80
-85
-90
-95
-100



Wheeler Court
Gray Co. Body Line
Carson County

Wheeler Court
Gray Co. Body Line
Carson County

Wheeler Court
Gray Co. Body Line
Carson County