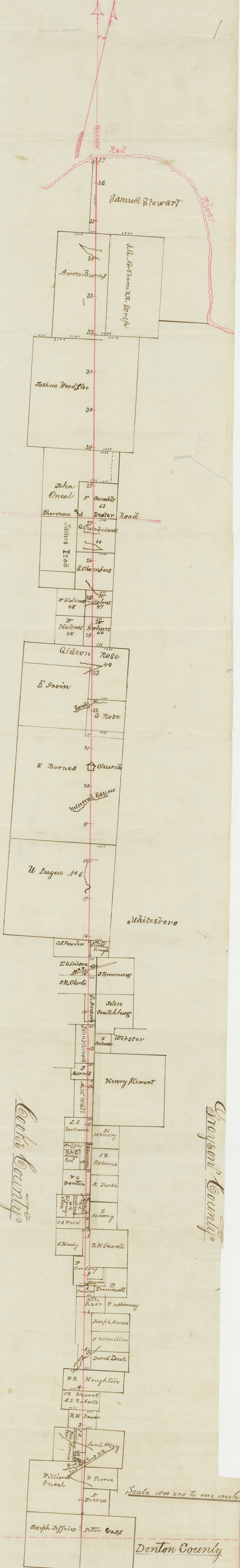


1852



Cooke County

Grayson County

Scale 1500 feet to one inch

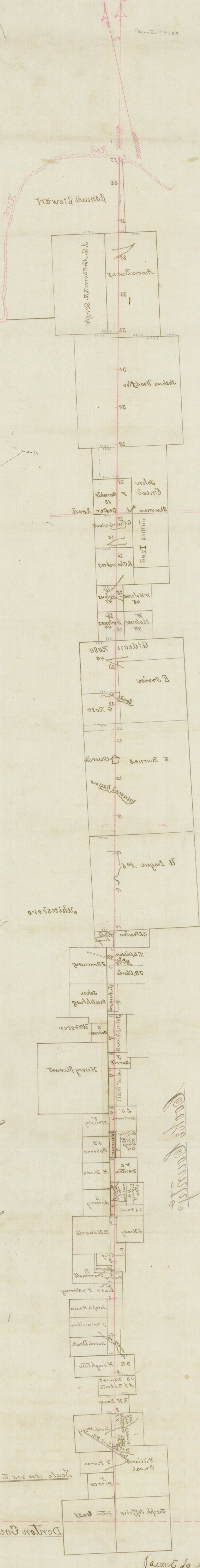
Denton County

The State of Texas
 County of Grayson }
 We Samuel Bonham duly appointed and authorized by the County Court of Grayson County Tex and W. W. Howeth duly appointed and authorized by the County Court of Cooke Co. Tex. to establish, mark and measure the eastern boundary line of Cooke County, and the western boundary line of said Grayson County, do hereby certify under our Oaths that the above and foregoing sketch map, is a true representation of said line as defined by us, and the surveys through which it runs and the natural and artificial marks called for in field notes of said line are correctly represented above. In testimony whereof Witness our official signatures on this the 12th day of Nov. AD 1881
 Samuel Bonham C. S. J. W.
 W. W. Howeth J. W. S. C. J. W.

The State of Texas
 Grayson County } D. A. Dickeman Clerk of the County Court of said County, do hereby certify that the foregoing sketch map and the attached field notes, are correct copies of the originals on file and of record in this office.
 To certify, which I hereunto set my hand and impress my seal of office at Sherman. This 1st day of February AD 1882
 D. A. Dickeman
 County Clerk

Filed March 2nd 1882

County 53929



Quincy County

County of Lincoln

The State of Texas
 County of Lincoln
 ss. I, J. B. Pickett, Clerk of said County, do hereby certify that the following is a true and correct copy of the original as the same is on file and recorded in the office of the County Clerk of said County, to-wit:

Attest: J. B. Pickett, County Clerk
 Filed March 2nd 1882
 County 53929