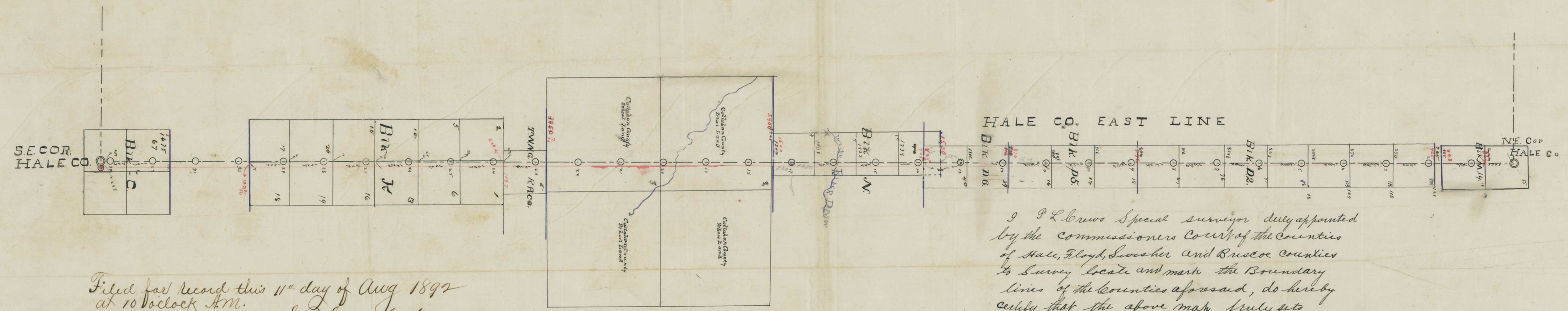
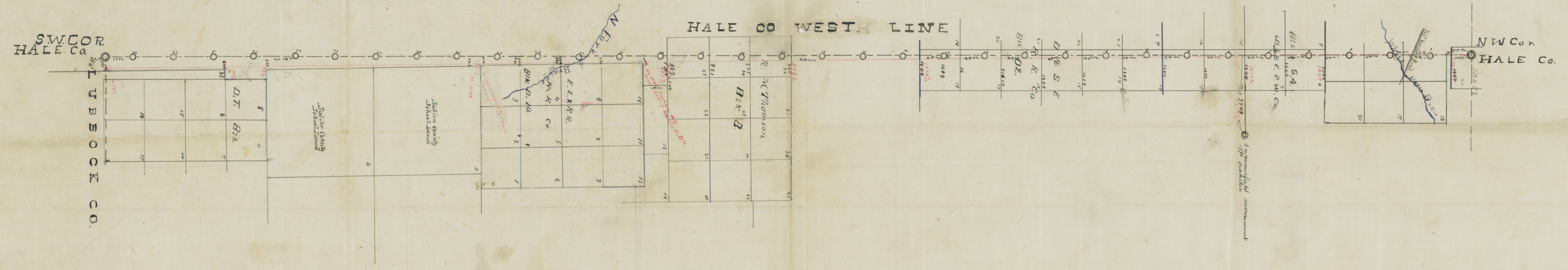
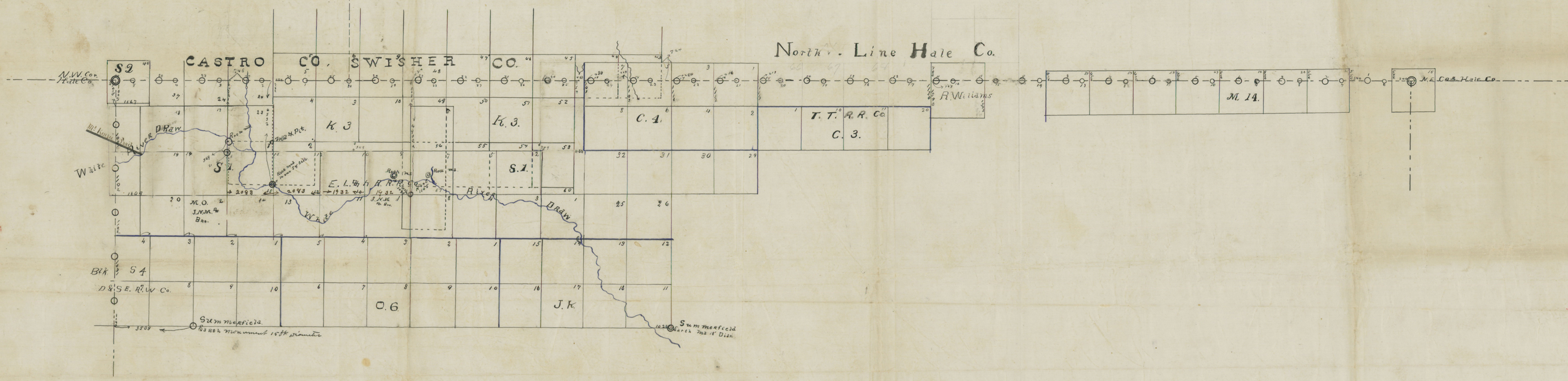


Handwritten notes in the top right corner, including "Hale Co. 1892" and other illegible scribbles.

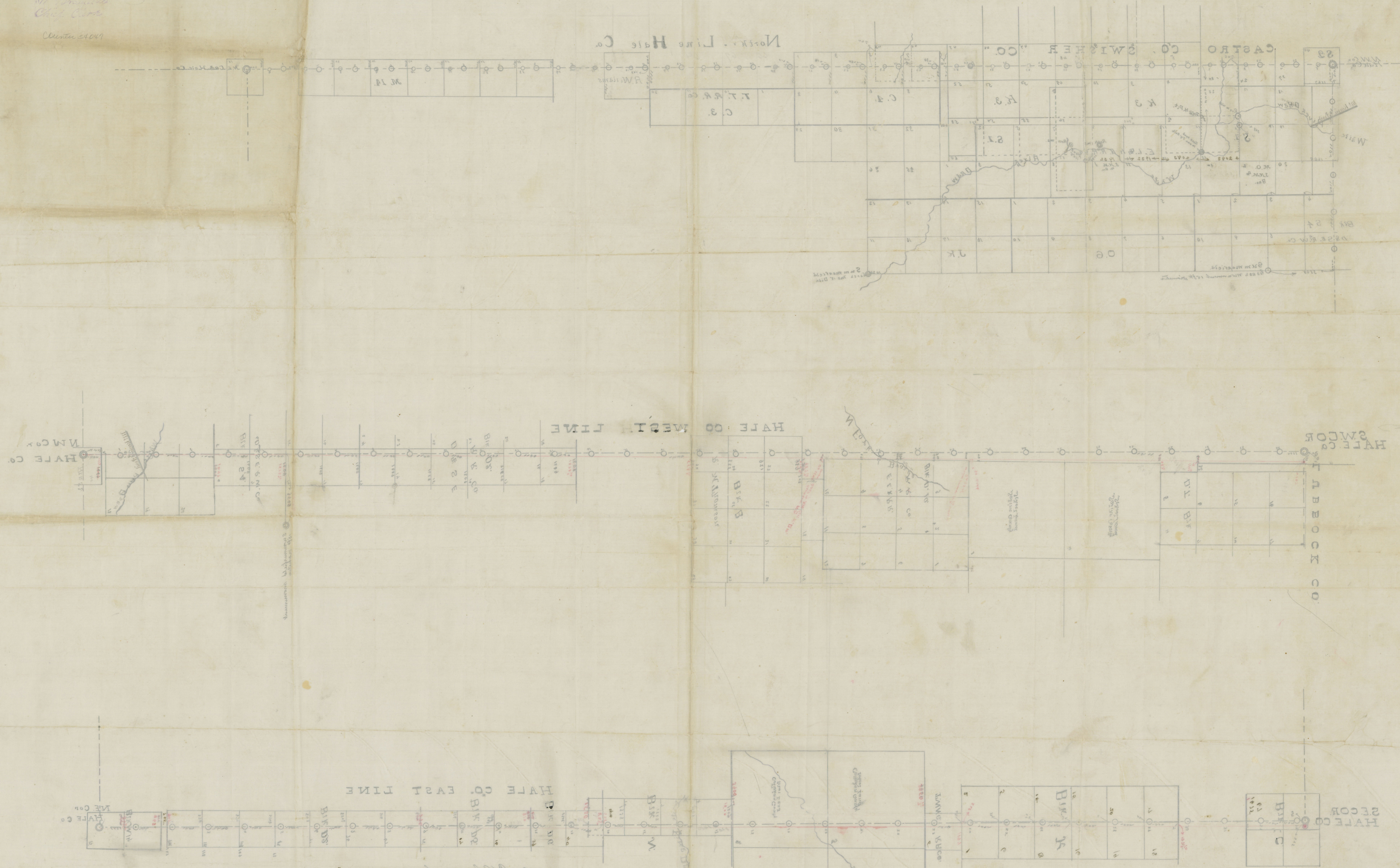


Filed for record this 11th day of Aug 1892
 at 10 o'clock A.M.
 I. P. Strong Sec. Clk.
 Hale Co. Texas
 By H. B. Martine Deputy

I J. L. Crews Special Surveyor duly appointed
 by the Commissioners Court of the Counties
 of Hale, Floyd, Swisher and Bruce Counties
 to locate and mark the Boundary
 lines of the Counties aforesaid, do hereby
 certify that the above map truly sets
 forth the location of the North East and
 West lines of Hale County as located
 by me in the field
 In testimony whereof I herunto set my
 hand at Clearview Texas this the
 30th day of July A.D. 1892
 J. L. Crews Special Surveyor

Hale & Bays
5
Filed Aug 30/92

Wm. B. Bays
Chas. B. Bays
Clinton 54049



I have been a special surveyor
at the city of 4. 1890
in testimony whereof I have set my
hand at Clinton Mo this 10th
day of July 1892

Wm. B. Bays
Chas. B. Bays

Filed for record this 11th day of Aug 1892
at 10 o'clock AM.
Wm. B. Bays
Chas. B. Bays
By W. B. Bays
Wm. B. Bays

5
8-30-1892