

The State of Texas } I, S. P. Strong, clerk of the County Court,  
 County of Hale } in and for said County and State,  
 do hereby certify that the above map of the County boundaries of Hale County, for the East, North, and West Lines is a true and correct copy of the original as is on file in this office. Given under my hand and seal of office this 11<sup>th</sup> day of August A.D. 1892.

S. P. Strong, Sec. Clerk,  
 Hale Co. Texas  
 By N. B. Martine Deputy

Filed for record Aug 11<sup>th</sup> 1892 at 10 o'clock AM.  
 S. P. Strong, Sec. Clerk,  
 Hale Co. Texas  
 By N. B. Martine Deputy

I, J. L. Crews, Special Surveyor, duly appointed by the commissioners court of the Counties of Hale, Floyd, Swisher and Busco counties to survey, locate and mark the boundary lines of the counties aforesaid, do hereby certify that the above map truly sets forth the location of the North, East and West lines of Hale County as located by me in the field.

In testimony whereof I hereunto set my hand at Plainview Texas this 30<sup>th</sup> day of July A.D. 1892.

J. L. Crews, Special Surveyor.

I, J. L. Crews do hereby certify that I have changed the above map to a true copy of that on file in the Genl Land Office and more fully described and shown by certificate of correction attached to notes at Cheltenham Tex Sept 21. 1892. J. L. Crews

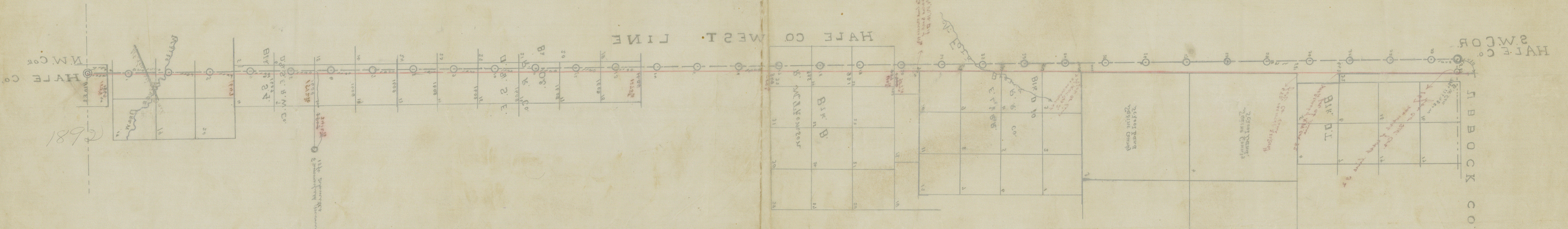
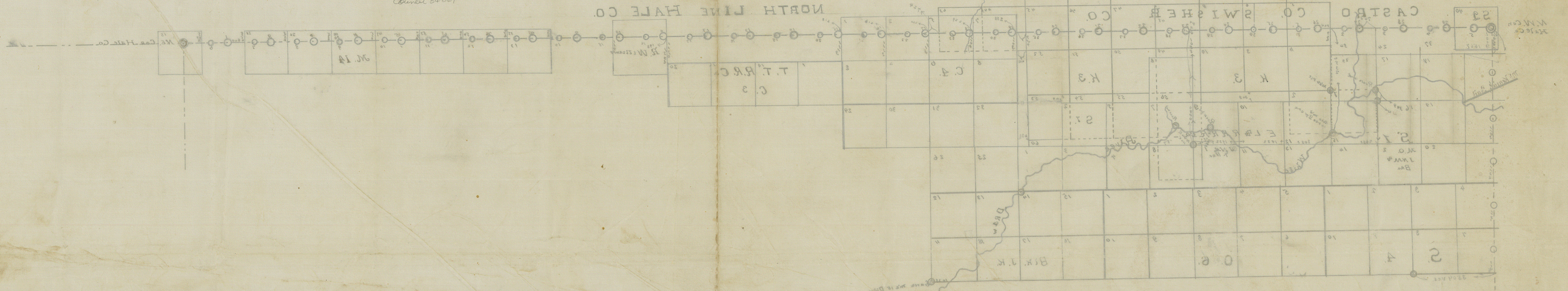


Hale Co line

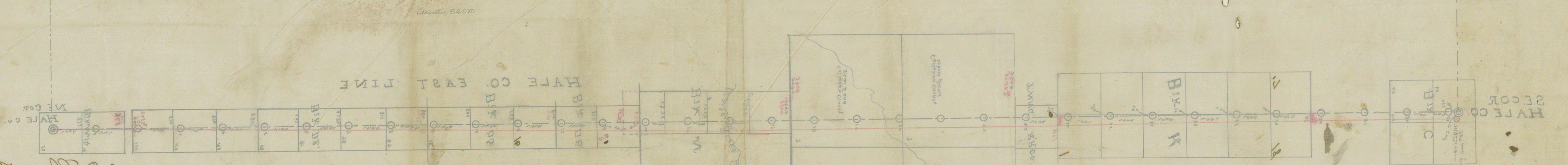
8-11-1892

43

Center 50049



Hale Co  
N. & W Lines  
by  
Creas 1892



The State of Iowa, J. D. Stewart, Clerk of the County Court,  
County of Hale, in and for said County and State,  
do hereby certify that the above map of the County Court  
of Hale County, Iowa, for the East, North, and West Lines  
is a true and correct copy of the original as on file  
in this office. Given under my hand and seal of  
office this 11th day of August A. D. 1892.  
J. D. Stewart, Clerk.  
Hale Co. Iowa.

Kind for record Aug 11, 1892 to check over  
J. D. Stewart, Clerk  
Hale Co. Iowa  
By W. B. Mortimer Deputy

That line of Hale County as shown  
in the field  
is a true and correct copy of the original  
as on file in this office.  
Given under my hand and seal of  
office this 11th day of August A. D. 1892.  
J. D. Stewart, Clerk.  
Hale Co. Iowa.

That line of Hale County as shown  
in the field  
is a true and correct copy of the original  
as on file in this office.  
Given under my hand and seal of  
office this 11th day of August A. D. 1892.  
J. D. Stewart, Clerk.  
Hale Co. Iowa.



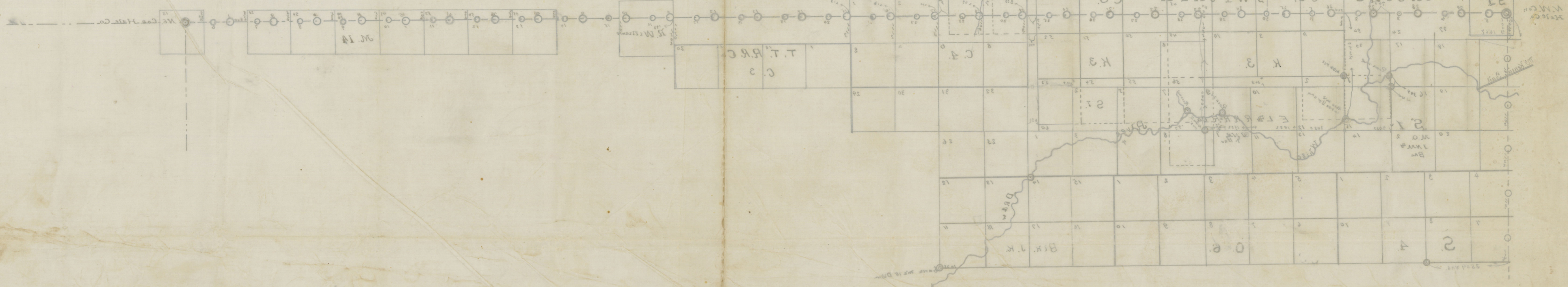
Hale Co line

8-1-1892

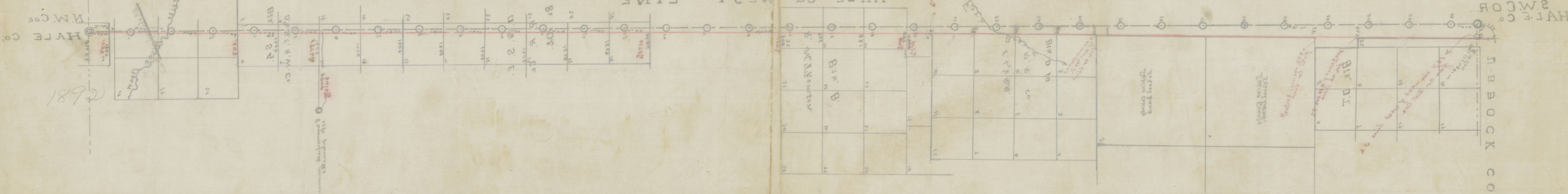
43

Count 5000

NORTH LINE HALE CO

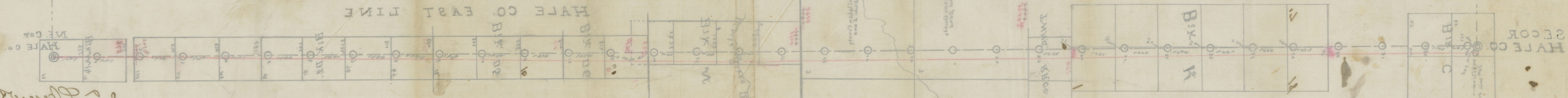


HALE CO WEST LINE



Hale Co  
N. E. & W Lines  
of  
Crews 1892

HALE CO EAST LINE



of J. R. Brown as clerk certify  
that a true copy of this map has been  
made and filed and many fully correct  
and correct copy certified of course  
from attached to county of Hale  
on Sept 21. 1892 J. R. Brown

of J. R. Brown as clerk certify  
that a true copy of this map has been  
made and filed and many fully correct  
and correct copy certified of course  
from attached to county of Hale  
on Sept 21. 1892 J. R. Brown

Kind for record Aug 11. 1892 at 10 o'clock AM  
J. R. Brown as clerk  
Hale Co Clerk  
By M. A. Martin Deputy

The State of Texas, J. R. Brown, clerk of the county court  
county of Hale, do hereby certify that the above map of the county  
of Hale, drawn by the county clerk, J. R. Brown, and  
correctly certified of the county clerk, as is on file  
in this office. Witness my hand and seal of  
office this 11th day of August A. D. 1892  
J. R. Brown as clerk  
Hale Co Clerk  
By M. A. Martin Deputy