

See Hale County vs. Lubbock County.  
S.W. Rep. Vol 194 pages 678-83 -

COPY OF THE GENERAL LAND OFFICE CERTIFIED COPY OF THE  
ORIGINAL FIELD NOTES FOR THE COMMON LINE BETWEEN HALE AND  
LUBBOCK COUNTIES.

The State of Texas.

Lubbock County.

Field notes for base line and county boundary between Hale and Lubbock Counties. Beginning 1st. mile at S. W. corner of Floyd County and N. W. corner of Crosby County Texas same being a large rock planted in ground 12 inches said rock 20 inches by 30 and 3 in dia. marked S. W. F. Co. on N. E. N. W. C. Co. S. E. S. E. H. Co. on N. W. and N. E. L. Co. on S. W. a charred cedar stick 3 in dia 10 inches long buried in ground on South of roak and piece of galvanized iron pipe 4 feet in dia planted on N. W. side of rock mound of earth trown around rock. pits E. & W. North and South 2x2 feet 12 inches deep said corner is North 740 vara, and West 185 varas from S. E. corner of Survey No. 69, Block C. D & W R R Co. survey.

Thence West needle reading 10° 35' E.

1st Mile, 440 varas large basin or dry pond on the North; at 1716 varas cross the W. line of Survey No. 68, 1160 Varas South of N. W. corner of same; 1900.8 varas mound of earth 2 feet high Pits east and West 2x2 feet 12 inches deep charcoal in mound

2nd. Mile: base line and County Boundary, Between Hale and Lubbock Counties, Beginning at 1st Mile mound, Thence West. at 1716 varas cross the W. line of Survey No. 103, Block C, D & W RR Co. survey 1160 varas South of N. W. corner of said R. R. survey; at 1900.8 varas mound of earth 2 feet high pits East and West 2x2 feet 12 inches deep charcoal in mound.

3rd Mile base line and county boundary between Hale and Lubbock Counties, Begin at 2nd Mile mound, Thence West xx across plain, at 1716 varas cross the West line of Survey No. 106, Block C, D & W R R Co. survey 1160 varas South of its N. W. corner; at 1900.8 varas mound of earth 2 feet high pits East and West 2x2 feet 12 inches deep charcoal in mound, needle reading 10° 55' E.

4th. mile base line and county boundary between Hale and Lubbock Counties. Begin at 3rd. Mile mound. Thence West across plain; at 1716 varas cross the West line of Survey No. 141, Block C, D & W RR Co. survey 1160 varas South of N. W. corner of said survey; at 1885 varas cross Estacado and Plainview road runs N. W. and S. E.; at 1900.8 varas mound of earth 2 feet high Pits East and West 2x2 feet 12 inches deep, charcoal in mound.

5th. Mile base line and county boundary between Hale and Lubbock Counties. Begin at 4th. mile mound Thence West across plain; at 1462 varas cross road runs N W and S E; at 1716 varas cross the West line of Survey No. 144, Block C D & W RR Co. survey 1160 varas South of its N. W. corner; at 1900.8 varas mound of earth 2 feet high Pits East and West

2x2 feet 12 inches deep charcoal in a mound.

6th. Mile base line and county boundary between Hale and Lubbock Counties. Begin at 5th. Mile mound. Thence West at 1744 varas cross wire fence East line of R. L. Stringfellow and H. E. Hume pasture also West line of Survey No. 5, Block C 2, EL & RR Ry Co survey, 1106 varas South of the N. W. corner of said survey no. 5; at 1900.8 varas mound of earth 2 feet high Pits East and West 2x2 feet 12 inches deep, charcoal in mound.

7th. Mile base line and County boundary Between Hale and Lubbock Counties. Begin at 6th. mile mound. Thence West across plain at 643 varas cross road to farm house course N W & S E; at 1744 varas cross the West line of Survey NO. 6, Block C 2, EL & RR Ry. Co. Survey 1106 varas South of N. W. corner of Said Survey; at 1900.8 varas mound of earth 2 feet high pits East and West 2x2 feet 12 inches deep, charcoal in mound.

8th. Mile base line and county boundary between Hale and Lubbock Counties. Begin at 7th, Mile mound Thence West across plain in Stringfellow and Hume Pasture at 1744 varas cross the West line of Survey NO. 20 Block C 2, TT Ry. Co 1106 varas South of its N. W. corner; at 1900.8 varas mound of earth 2 feet high pits East and West 2x2 feet 12 inches deep charcoal in mound.

9th. Mile base line and County boundary between Hale and Lubbock Counties. Begin at 8th. mile mound, Thence West across plain at 1744 varas cross the West line of Survey No. 19, Block C 2 TT RY Co. survey 1106 varas south of its N. W. corner; at 1900.8 varas mound of earth 2 feet high pits East and West, 2x2 feet 12 inches deep, charcoal in mound.

10th. mile base line and County boundary between Hale and Lubbock Counties. Begin at 9th. Mile Mound, Thence West across plain at 689.4 varas cross wire fence course North and South; at 1744 varas cross the West line of Survey No. 18, Block C 2 TT Ry Co. Survey 1106 varas South of its N. W. corner; at 1900.8 varas mound of earth 2 feet high pits East and West 2x2 feet 12 inches deep, charcoal in mound.

11th. mile base line and county boundary between Hale and Lubbock Counties. Begin at 10th. mile mound, Thence West across plain, at 1744 varas cross the West line of Survey No. 17, Block C 2, TT Ry. Co. Survey, 1106 varas South of its N. W. corner; at 1900.8 varas mound of earth 2 feet high pits East and West, 2x2 feet 12 inches deep, charcoal in mound.

12th. mile base line and county boundary between Hale and Lubbock Counties, Begin at 11th. mile mound Thence West across Plain, at 1744 varas cross the West line of Survey No. 16, Block C 2, TT Ry. Co. Survey 1106 varas South of its N. W. corner; at 1900.8 varas mound of earth 2 feet high pits East and West, 2x2 feet 12 inches deep charcoal in mound.

13th. mile base line and county boundary between Hale and Lubbock Counties. Begin at 12th. mile Mound, Thence West across plain at , 1744 varas cross the West line of Survey No. 15, Block C 2, TT RR Co. Survey 1106 varas South of its N. W. corner; at 1900.8 varas a mound of earth 2 feet high pits East and West 2x2 feet 12 inches deep, charcoal in mound.

14th. mile base line and County boundary between Hale and Lubbock Counties. Begin at 13th mile mound, Thence West across Plain at Mag. Needle reading Var.  $10^{\circ} 55'$  E. at 1744 varas corss the West line of Survey No. 14, Block C 2, TT Ry Co. Survey 1106 varas South of its N. W. corner; at 1900.8

varas mound of earth 2 feet high, Pits East and West, 2x2 feet 12 inches deep, charcoal in mound.

15th. mile base line and County boundary between Hale and Lubbock Counties, Begin at 14th. mile mound. Thence West across plain at 1267 varas cross the East line of Survey No. 14, Block C K G C & S F Ry Co. survey 133 varas N. of its S. E. corner; at 1744 varas cross the West line of Survey No. 13, Block C 2, TT Ry Co. Survey, 1106 varas South of its N. W. corner; at 1900.8 varas mound of earth 2 feet high pits East and West 2x2 feet 12 inches deep, charcoal in mound.

16th. mile base line and county boundary between Hale and Lubbock Counties. Begin at 15th. mile mound thence West across plain at 1267 varas cross the East line of Survey No. 12, Block C K GC & SF Ry Survey 126 1/2 varas north of its S. E. corner ; at 1900.8 varas mound of earth 2 feet high Pits East and West 2x2 feet 12 inches deep, charcoal in mound.

17th mile base line and County boundary between Hale and Lubbock Counties . Begin at 16th mile mound Thence West at 250 varas cross the Amarillo and Lubbock City road, course N. W. S. E. ; at 1267 varas cross the East line of Survey No. 10, Block C K GC & SF Ry Co. Survey 120 varas N. of its S. E. corner; at 1900.8 varas mound of earth 2 feet high Pits East and West 2x2 feet 12 inches deep charcoal in mound.

18th mile base line and County boundary between Hale and Lubbock Counties . Begin at 17th mile mound, Thence West at 1267 varas cross the East line of Survey No. 8, Block C K GC & SF Ry Survey 113 1/2 varas North of its S. E. corner; at 1900.8 varas mound of earth 2 feet high, pits East and West, 2x2 feet 12 inches deep, charcoal in mound.

19th Mile base line and County boundary between Hale and Lubbock Counties. Begin at 18th mile mound. Thence West at 1267 varas cross the East line of Survey No. 6, Block C K, GC & SF Ry Survey 107 varas North of its S. E. corner; at 1900.8 varas mound of earth 2 feet high pits East and West 2x2 feet 12 inches deep charcoal in mound., mound North of North Fork of Double Mountain Fork of Brazos River.

20th. mile base line and County boundary between Hale and Lubbock Counties. Begin at 19th mile mound, Thence West at 1267 varas cross the East line of Survey No. 4, Block C K GC & SF Ry Survey 100 1/2 varas North of its S. E. corner; at 1640 varas cross the North fork of Double Mountain fork of Brazos River course NW& SE; at 1900.8 varas mound of earth 2 feet high pits East and West 2x2 feet, 12 inches deep, charcoal in mound.

21st. mile base line and County boundary between Hale and Lubbock Counties. Begin at 20th. mile mound, Thence West at 1267 varas cross the East line of Survey No. 2 Block C 2, GC & SF Ry Survey 94 varas North of its S. E. corner; at 1900.8 varas mound of earth 2 feet high pits East and West, 2x2 feet, 12 inches deep, Charcoal in mound.

22nd Mile base line and County boundary between Hale and Lubbock Counties, Begin at 21st Mile mound, Thence West (Needle reading Mag. Var. 11° 00' E.).; <sup>at 940 road corner NW & E.</sup> at 1267 varas cross the East line of Survey No. 23, Block D T EL & RR C. Survey 87.5 varas North of its S. E. corner; at 1900.8 varas mound of earth 2 feet high pits East and West, 2x2 feet, 12 inches deep, charcoal in mound., Mound in (dry) basin witness mound bears West 420 varas pits East and West North and South 12 x 12 inches 10 inches deep, charcoal in mound.

4

23rd. mile base line and boundary between Hale and Lubbock Counties. Begin at 22nd. Mile mound. Thence West at 420 varas witness mound to 22nd mile mound pits east and west north and South charcoal in mound; at 1267 varas cross East line of Survey No. 22, Block D T, EL & RR Ry. Co. Survey 81 varas North of its S. E. corner; at 1900.8 varas mound of earth 2 feet high pits East and West 2x2 feet, 12 inches deep, charcoal in mound.

24th. mile base line and County boundary between Hale and Lubbock Counties. Begin at 23rd. mile mound. Thence West at 400 varas cross basin (or dry pond) at 1267 varas cross the East line of Section No. 21, Block D T, EL & RR Co. Survey 74.5 varas N. of its S. E. corner; at 1900.8 varas mound of earth 2 feet high pits East and West 2x2 feet, 12 inches deep, charcoal in mound.

25th. mile base line and County boundary between Hale and Lubbock Counties. Begin at 24th. mile mound, Thence West at 1267 varas cross the East line of Section No. 20, Block D T, EL & RR Co. Survey 68 varas NO. of its S. E. corner; at 1900.8 varas mound of earth 2 feet high, pits East and West, 2x2 feet, 12 inches deep, charcoal in mound.

26th mile base line and County Boundary between Hale and Lubbock Counties, Begin at 25th mile mound . Thence West at 1000 varas point in basin( or dey pond); at 1267 varas cross the East line of Section No. 19, Block D T, EL & RR Co. Survey 61.5 varas North of its S. E. corner; at 1900.8 varas mound of earth 2 feet high pits East and West, 2x2 feet, 12 inches deep, charcoal in mound.

27th mile base line and County boundary between Hale and Lubbock Counties. Begin at 26th mile mound, Thence West at 1267 varas cross the East line of Survey No. 18, Block D.T , 55 varas North of its S. E. corner, Original Grantee, EL & RR Co. ; at 1900.8 varas mound of earth 2 feet high pits East and West 2x2 feet, 12 inches deep, charcoal in mound.

28th. mile base line and County boundary between Hale and Lubbock Counties. Begin at 27th mile mound Thence West at 1267 varas cross the East line of Section No. 17, Block D T 48.5 varas North of its S. E. corner; at 1900.8 varas mound of earth 2 feet high , Pits East and West, 2x2 feet, 12 inches deep, charcoal in mound.

29th. mile base line and County Boundary between Hale and Lubbock Counties, Begin at 28th. mile mound, Thence West at 1267 varas cross the East line of Section No. 16, Block D T, 42 varas North of its S. E. corner, Original grantee, EL & RR Ry Co.; at 1900.8 varas mound of earth 2 feet high , pits East and West, 2x2 feet, 12 inches deep, charcoal in mound.

30th. mile base line and Couty boundary between Hale and Lubbock Counties, . Begin at 29th mile mound, Thence West at 1267 varas cross the East line of Section No. 32, Block D T, 1935.5 varas North of its S. E. corner; at 1742 varas West line of said Section 32, 1937.1 varas North of its S. W. corner; Original Grantee, LS & V RR Co.; at 1810 varas cross the East line of Ellwood Pasture fence (formaly Snider Pasture fence), ( six wire and galvanized); at 1900.8 varas

mound of earth 2 feet high , pits East and West North and South, 2x2 feet 12 inches deep, a galvanized pipe 4 feet long 2 in diameter planted in ground 2 feet deep in mound charcoal bottom pipe. Survey commenced November 4th. A. D. 1891 and finished November 12th. A. D. 1891.

A. J. Sartor }  
J. I. Millington ) Chain Carriers.

Highest Needle reading Mag. Var. 11° 15' E.  
County Boundary run by Ira Millington State Surveyor.  
Land Lines run by L. A. White County Surveyor of Hale County Texas.

We, the undersigned surveyors do hereby certify that the above and foregoing field notes truly indicates lines and corners as surveyed by us on the days and dated above written  
This Nov. 12th. A. D. 1891.

Ira Millington State Surveyor State of Texas  
L. A. White County Surveyor, Hale County Texas

Hale and Lubbock County.

Base line and County Boundary between the Counties of Hale and Lubbock  
Filed Nov. 16th. 1891.

Examined and approved and applied Dec. 2, 1891.  
Beaumont.

Abstract corrected, May. 13, 1893.  
B.

General Land Office, Austin Texas, March, 14, 1914.

I, J. M. Melson, acting Commissioner of the General Land Office of the State of Texas, do hereby certify that the above and foregoing is a true and correct copy of the original, together with all the endorsements thereon now on file in this office.

In Testimony whereof, I hereunto set my hand, and affix the impress of the seal of said office the date last above written.

(Signed) J. M. Melson  
Acting Commissioner of the General Land Office.

(SEAL)

This is a true and correct copy.

*W. J. Williams*

Special Surveyor for Hale County

6  
STATE of TEXAS)  
COUNTY of HALE)

FIELD NOTES OF THE RESURVEY OF THE HALE AND LUBBOCK COUNTY  
LINE.

MILE 1.

BEGINNING at a stone 24" x 30" x 6" , charcoal stake on S. side, set in the center of four old pits, 430.9 varas from the S. line of Survey No. 68, Block C, the original S. E. corner of Hale, the S. W. corner of Floyd, the N. W. corner of Crosby, and the N. E. corner of Lubbock Counties, made by State Surveyor Ira Millington and L. A. White, County Surveyor of Hale County, from whence a stone under fence, set by State Surveyor, W. D. Twichell, for the S. E. corner of Survey No. 68, Block C, bears S. 29° 18' E. 494 varas.

Thence S. 89° 20' 30" W. at 247.6 varas pass a stone 10" x 8" x 4", set in the center of a circular trench 12 feet in diameter, Crews' preliminary S. E. corner of Hale County, from whence two pits, Crews' 33rd. mile on preliminary E. line of Hale County, bears N. 0° 3' 30" W. 457.5 varas, at 346 and 411 varas cross roads; at 703 varas cross fence; at 1658.5 varas cross the W. line of Survey No. 68, Block C, 412.1 varas N. of its S. W. corner; at 1659.3 varas set a 1" galvanised pipe, marked H. L. 1659.3 V, under fence; at 1902 varas point in field for Mile 1.

MILE 2.

BEGINNING at point for Mile 1

Thence S. 89° 19' 55" W. at 230 varas cross fence; at 1650.4 varas set a 1" galvanised pipe, marked 1 M 1650.4 V, H L, under fence; at 1657.8 varas cross the W. line of Survey No. 103, Block C, 390.7 varas N. of its S. W. corner; at 1664 varas set a 1" galvanized pipe, marked 1 M 1664 V H L; at 1902 varas point in field for Mile 2.

MILE 3.

BEGINNING at point for Mile 2.

Thence S. 89° 19' 20" W. at 467.4 varas and 1260.4 varas cross fences; at 1655.6 varas set a 1" galvanized pipe, marked, 2 M 1655.6 V H L, under fence; at 1657.2 varas cross the W. line of Survey No. 106, Block C, 369.2 varas N. of its S. W. corner; at 1904.3 varas set a 1" galvanized pipe marked M 3, H L, in the center of 2 old pits, the original 3rd. mile of the Hale and Lubbock County Line, made by Surveyors Millington and White.

MILE 4.

BEGINNING at original Mile 3.

Thence S. 89° 17' 45" W. at 645 and 784 varas cross roads; at 1088 varas cross Rail Road Grade; at 1620 varas cross old trail; at 1653.8 varas set a 1" galvanized pipe, marked, 3 M 1653.8 V H L, under fence; at 1654.2 varas cross the W. line of Survey No. 141, Block C, 346.1 varas N. from its S. W. corner; at 1886 varas cross old trail; at 1902.8 varas set a 1" galvanized pipe marked, M 4 H L, by charcoal in center of 2 old pits, the original 4th. mile of the Hale and Lubbock County Line, made by Surveyors, Millington and White.

Survey No. 68, Block C lies 64 acres in Floyd County, 433.7 acres in Hale County, 123.7 acres in Lubbock County and 18.6 acres in Crosby County.

Survey No. 103, Block C, lies 504.7 acres in Hale County, and 135.3 acres in Lubbock County.

Survey No. 106, Block C, lies 508.7 acres in Hale County and 131.3 acres in Lubbock County.

Survey No. 141, Block C, lies 512.1 acres in Hale County, and 127.9 acres in Lubbock County.

For map of the above field notes, see Sketch No. 1.

Page No. 8



9

MILE 5.

BEGINNING at original Mile 4.

Thence S. 89° 17' W. at 100 varas enter lake; at 250 varas pass out; at 326 and 1590 varas cross roads; at 1648.3 varas set a 1" galvanized pipe marked, 4M 1648.3 V, H L, on old fence line; at 1652 varas cross the W. line of Survey No. 144, Block C, 323.9 varas N. from its S. W. corner; at 1705 varas cross road; at 1902.8 varas set a 1" galvanized pipe marked, M 5 H L, in the center of 2 old pits, the original 5th. mile of the Hale and Lubbock County Line, made by Surveyors Millington and White.

MILE 6

BEGINNING at original Mile 5.

Thence S. 89° 16' W. at 1344 and 1535 varas cross roads; at 1651.3 varas cross the W. line of Survey No. 5, Block C, 301.5 varas N. from its S. W. corner; at 1651.7 varas set a 1" galvanized pipe, marked, 5M 1651.7 V H L, under fence; at 1872 varas cross road; at 1903.3 varas set a 1" galvanized pipe marked, M 6 H L, in the center of 2 old pits, the original 6th. mile of the Hale and Lubbock County Line, made by surveyors Millington and White.

MILE 7.

BEGINNING at original Mile 6.

Thence S. 89° 13' 50" W. at 652 and 1258 varas cross roads; at 1649.4 varas cross the W. line of Survey No. 6, Block C2, and the E. line of the J. F. Dunn Survey, 278.6 varas N. of its S. E. corner; at 1749.6 varas cross the E. line of Survey No. 8, Block P & F and the W. line of the J. F. Dunn Survey, 277.4 varas N. from its S. W. corner; at 1751.3 varas set a 1" galvanized pipe, marked, 6M 1751.3 V H L, under fence; at 1903.7 varas set a 1" galvanized pipe marked, M 7 H L, in the center of 2 old pits, the original 7th mile of the Hale and Lubbock County Line, made by Surveyors Millinton and White.

MILE 8.

BEGINNING at original Mile 7.

Thence S. 89° 15' 45" W. at 823 varas cross fence; at 1752 varas cross the W. line of Survey No. 8, Block P & F, 254.5 varas N. of its S. W. corner; at 1903.3 varas set a 1" galvanized pipe marked, M 8 H L, by charcoal in center of 2 old pits, the original 8th. mile of the Hale and Lubbock County Line, made by Surveyors Millington and White.

MILE 9.

BEGINNING at original Mile 8.

Thence S 89° 15' 10" W at 1425 varas cross road; at 1754.5 varas cross the W. line of Survey No. 7, Block P & F. 233 varas N of its S. W. corner; at 1902 varas set a 1" galvanized pipe marked, M 9 H L, by charcoal in center of 2 old pits, the original 9th. mile of Hale and Lubbock County Line, made by Surveyors Millington and White.

Survey No. 144, Block C, lies 537.3 acres in Hale County and 112.7 acres in ~~Lamb~~ Lubbock County.

Survey No. 5, Block C2, lies 534.7 acres in Hale County and 105.3 acres in Lubbock County.

8 Survey No. 6 Block C2 lies 542.2 acres in Hale County and 97.8 acres in Lubbock County.

5 Survey No. J. F. Dunn lies 248.1 acres in Hale County and 4.9 acres in Lubbock County.

Survey No. 8, Block P & F. lies 369.5 acres in Hale County and 90 acres in Lubbock County.

Survey No. 7, Block P & F lies 376.7 acres in Hale County and 82.3 acres in Lubbock County.

For map of the above field notes see Sketch No. 2 Page No.//

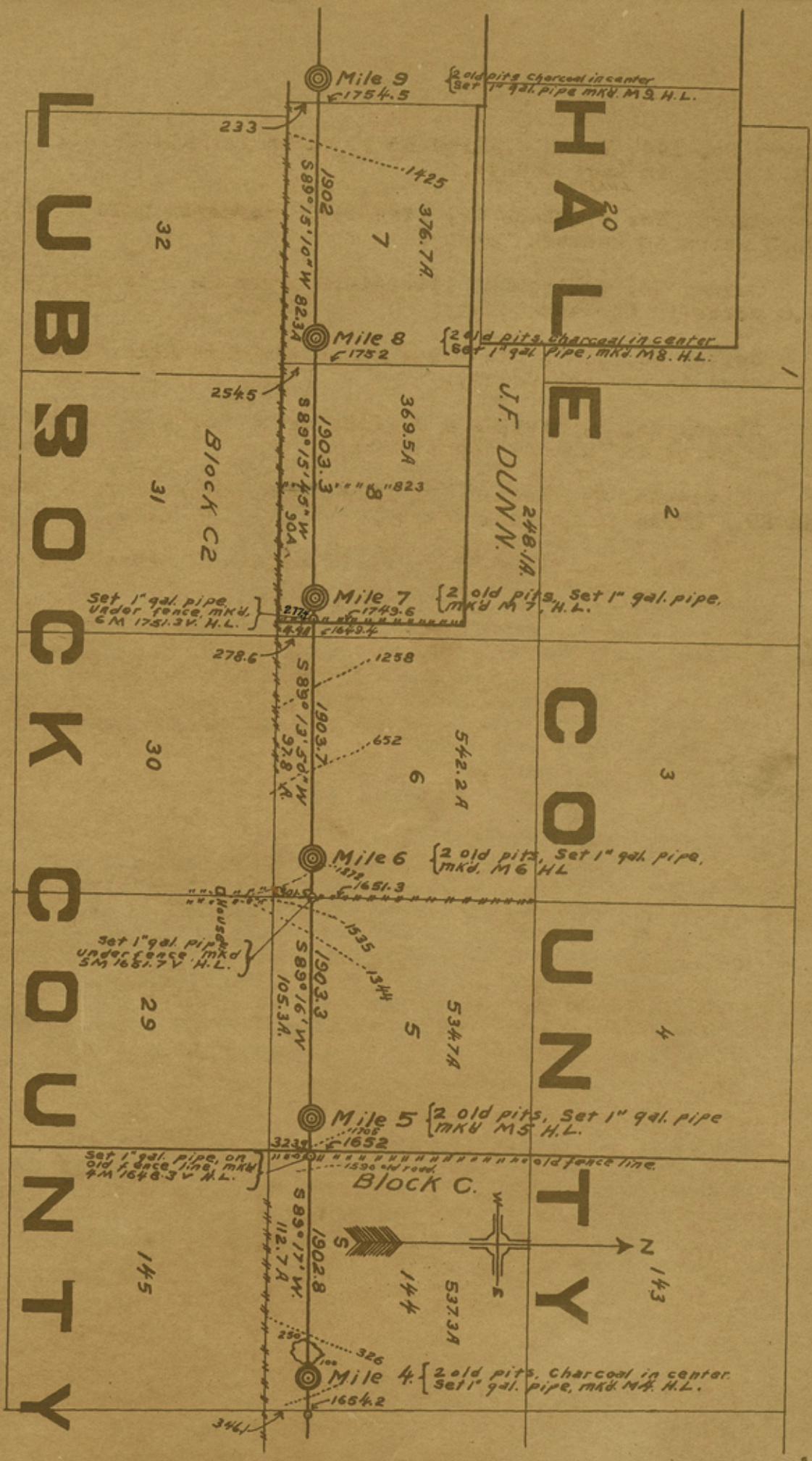
Hale and Lubbock County Line, made by surveyors Millington and White.

REMARKS at original site 6.  
Bearing S. 89° 15' 30" W. at 525 and 1250 varas cross roads; at 1647.4 varas cross the N. line of Survey No. 4, Block C2, and the N. line of the J. F. Dunn Survey, 278.6 varas E. of the S. E. corner; at 1742.5 varas cross the E. line of Survey No. 8, Block P & F and the N. line of the J. F. Dunn Survey, 277.4 varas E. from the S. W. corner; at 1742.3 varas set a 1" galvanized pipe marked, M 7 H L, under fence; at 1902.7 varas set a 1" galvanized pipe marked, M 7 H L, in the center of 2 old pits, the original 7th mile of the Hale and Lubbock County line, made by surveyors Millington and White.

REMARKS at original site 7.  
Bearing S. 89° 15' 30" W. at 525 varas cross fence; at 1742 varas cross the N. line of Survey No. 8, Block P & F, 284.5 varas E. of the S. W. corner; at 1902.3 varas set a 1" galvanized pipe marked, M 7 H L, by charcoal in center of 2 old pits, the original 6th mile of the Hale and Lubbock County line, made by surveyors Millington and White.

REMARKS at original site 8.  
Bearing S. 89° 15' 30" W. at 1125 varas cross road; at 1742.5 varas cross the N. line of Survey No. 7, Block P & F, 284.5 varas E. of the S. W. corner; at 1902 varas set a 1" galvanized pipe marked, M 7 H L, by charcoal in center of 2 old pits, the original 5th mile of Hale and Lubbock County line, made by surveyors Millington and White.

Count 54091



FILE N3 36003.

Sketch N3 2

## MILE 10.

BEGINNING at original Mile 9?

Thence S  $89^{\circ} 12' 45''$  W. at 1611.8 varas cross the W. line of Survey No. 6, Block P & F, 211.9 varas N. of its S. W. corner; at 1696 varas cross road; at 1902.8 varas set a 1" galvanized pipe marked M 10, H L, by charcoal in center of 2 old pits, the original 10th. mile of the Hale and Lubbock County Line, made by Surveyors Millington and White.

## MILE 11.

BEGINNING at original Mile 10.

Thence S  $89^{\circ} 13' 20''$  W. at 1472.4 varas set a 1" galvanized pipe, marked, 10M 1472.4 V H L, under fence; at 1474 varas cross the W. line of Survey No. 5, Block P & F 190.9 varas N. of its S. W. corner; at 1712 varas cross road; at 1902.8 varas to charcoal in field, Pits gone, the original 12th. mile of the Hale and Lubbock County Line, placed by Surveyors Millington and White.

## MILE 12.

BEGINNING at original Mile 11.

Thence S.  $89^{\circ} 12' 45''$  W. at 845 varas cross fence; at 846.3 varas cross the W. line of Survey No. 4, Block P & F, 175.7 varas N. of its S. W. corner, at 1641 varas point even with fence to South; at 1902.8 varas charcoal in field Pits gone, the original 12th mile of the Hale and Lubbock County Line, placed by Surveyors Millington and White.

## MILE 13.

BEGINNING at original Mile 12.

Thence S.  $89^{\circ} 11' 10''$  W. at 77.6 varas set a 1" galvanized pipe, marked, 12 M 77.6 V H L, under fence; at 708.5 varas cross the W. line of Survey No. 3, Block P & F, 152.2 varas N. of its S. W. corner; at 1581.3 varas set a 1" galvanized pipe marked, M 12 1581.3 V H L, under fence; at 1590.9 varas cross the W. line of Survey No. 2½, Block P & F, 143.8 varas N. of its S. W. corner, at 1602.3 varas set a 1" galvanized pipe, marked, 12 M 1602.3 V H L, under fence; at 1902.8 varas point in field, the 13th. Mile of the Hale and Lubbock County Line.

## MILE 14.

BEGINNING at 13th Mile Point.

Thence S.  $89^{\circ} 10' 35''$  W at 1456.7 varas cross the W. line of Survey No. 2, Block P & F, 122.2 varas N. of its S. W. corner; at 1638 varas point even with the lane to South; at 1902.8 varas point in field, the 14th. Mile of the Hale and Lubbock County Line.

## MILE 10.

BEGINNING at original Mile 9.

Section No. 6, Block P & F, lies 366.1 acres in Hale County and 75.9 acres in Lubbock County.

Section No. 5, Block P & F lies 382 acres in Hale County and 63 acres in Lubbock County.

Section No. 4, Block P & F, lies 280.2 acres in Hale County and 41.5 acres in Lubbock County.

Section No. 3, Block P & F, lies 395.6 acres in Hale County and 51.2 acres in Lubbock County.

Survey No. 2 $\frac{1}{2}$ , Block P & F lies 200 acres in Hale County and 23.1 acres in Lubbock County.

Survey No. 2, Block P & F lies 400.9 acres in Hale County and 40.8 acres in Lubbock County.

Survey No. 1, Block P & F lies 389.5 acres in Hale County and 33 acres in Lubbock County.

150.7 varas cross the E. line of Survey No. 4, Block P & F, 170.7 varas N. of its S. W. corner, at 1041 varas point even with fence to South; at 1002.8 varas diagonal in field this goes, the original 10th mile of the Hale and Lubbock County Line, placed by Surveyors Hillington and White.

## MILE 11.

BEGINNING at original Mile 10.

Traverse C, 89° 11' 10" W, at 77.6 varas set a 1" galvanized pipe, marked, 12 & 77.6 V H L, under fence; at 708.5 varas cross the W. line of Survey No. 3, Block P & F, 152.2 varas N. of its S. W. corner; at 1501.7 varas set a 1" galvanized pipe, marked, 12 & 1501.7 V H L, under fence; at 1590.4 varas cross the W. line of Survey No. 2 $\frac{1}{2}$ , Block P & F, 143.8 varas N. of its S. W. corner, at 1073.3 varas set a 1" galvanized pipe, marked, 12 & 1073.3 V H L, under fence; at 1002.8 varas point in field, the 11th mile of the Hale and Lubbock County Line.

## MILE 12.

BEGINNING at 11th Mile Point.

Traverse C, 89° 10' 33" W at 1456.7 varas cross the W. line of Survey No. 2, Block P & F, 152.2 varas N. of its S. W. corner; at 1000 varas point even with the lane to South; at 1002.8 varas point in field, the 12th mile of the Hale and Lubbock County Line.



MILE 15.

BEGINNING at the 14th. Mile Point.

Thence S. 89° 10' W. at 76.2 varas set a 1" galvanized Pipe, marked, M 14 76.2 V H L, under fence; at 541 varas cross road; at 1216.2 varas cross the W. line of Survey No. 1, Block P & F, 102.1 varas N. of its S. W. corner, and the E. line of Survey No. 14, Block CK, 446.1 varas N. of its S. E. corner; at 1311 varas set a 1" galvanized pipe, marked, 14M 1311 V H L, under fence; at 1903 varas set a 1" galvanized pipe marked, 15 M H L, by charcoal in center of 2 old pits, the original 15th. Mile of the Hale and Lubbock County Line, made by Surveyors Millington and White.

MILE 16.

BEGINNING at original Mile 15.

Thence S. 89° 9' 10" W. at 1002 varas cross fence; at 1214.2 varas cross the W. line of Survey No. 14, Block C K, 418 varas N. of its S. W. corner; at 1247 varas cross road; at 1431.6 varas cross the side track of the P & N. T. R. R.; at 1438 varas cross the Main track of the P. & N. T. R. R., 1043 feet N. of Switch Stand; at 1456.6 varas cross the P & N. T. R. R. Right-of-Way; at 1475.3 varas set a 1" galvanized pipe marked, 1475.3 V H L; at 1602 varas set a 1" galvanized pipe marked, 15 M 1602 V H L, in the E. line of Overton Street in Abernathy; at 1623.6 varas set a 1" galvanized pipe marked, 15 M 1623.6 V H L, in the E line of Block 147, 5.5 feet N. of its S. E. corner; at 1731.6 varas set a 1" galvanized pipe, marked, 15 M 1731.6 V H L, in the W. line of Block No. 147, 1.6 feet N. of its S. W. corner; at 1753.2 varas set a 1" galvanized pipe marked, 15 M 1753.2 V H L, in the E. line of Block No. 148, 0.9 feet N. of its S. E. corner; at 1861.2 varas, point 5.5 feet S. of the S. E. corner of Block No. 149; at 1901.6 varas set a 1" galvanized pipe marked, M 16, H L, by charcoal in center of 2 old pits, ~~the~~ in 10th. Street, Abernathy, the original 16th. Mile of the Hale and Lubbock County Line, made by Surveyors Millington and White.

MILE 17.

BEGINNING at original Mile 16.

Thence S. 89° 9' W. along 10th. Street in Abernathy, at 839 varas cross ~~the~~ road; at 1213.6 varas cross the W. line of Survey No. 12, Block C K, 390 varas N. of its S. W. corner; at 1328 varas set a 1" galvanized pipe marked, 16 M 1328 V H L, under fence; at 1902 varas set a 1" galvanized pipe marked M 17, H L, by charcoal in center of 2 old pits, the original 17th. Mile of the Hale and Lubbock County Line, made by Surveyors Millington and White.

MILE 18.

BEGINNING at original Mile 17.

Thence S. 89° 8' W. at 1212.6 varas cross the W. line of Survey No. 10, Block C K, 362.2 varas N. of its S. W. corner; at 1318 varas set a 1" galvanized pipe marked, 17 M 1318 V H L, under fence; at 1902 varas point in field for Mile 18.

## MILE 19.

BEGINNING at 18th. Mile Point.

Thence S. 89° 7' 25" W. at 867 varas cross fence; at 954 varas cross road; at 1211.6 varas cross the W. line of Survey No. 8, Block C K334.1 varas N. of its S. W. corner; at 1325 varas set a 1½" galvanized pipe marked 18 M. 1325 V H L, under fence; at 1865 varas pass about 6 varas N of well; at 1903 varas set a 1½" galvanized pipe marked, 19 M H L by farm house, for the 19th Mile.

Survey No. 14, Block C K, lies 494.6 acres in Hale County and 145.4 acres in Lubbock County.

Survey No. 12, Block C K, Abernathy Townsite, lies 504 acres in Hale County and 136 acres in Lubbock County.

Block No. 195, in Abernathy, lies 269764.9 square feet in Hale County, and 483528.4 square feet in Lubbock County.

Lot No. 9, Block No. 147, lies 6130 square feet in Hale County and 620 square feet in Lubbock County.

Lot No. 10, Block No. 147, lies 6845 square feet in Hale County and 155 square feet in Lubbock County.

Lot No. 11, Block No. 147 lies 6875 square feet in Hale County and 125 square feet in Lubbock County.

Lot No. 12, Block No. 147, lies 6905 square feet in Hale County and 95 square feet in Lubbock County.

Lot No. 9, Block No. 148, lies 6720 square feet in Hale County and 30 square feet in Lubbock County.

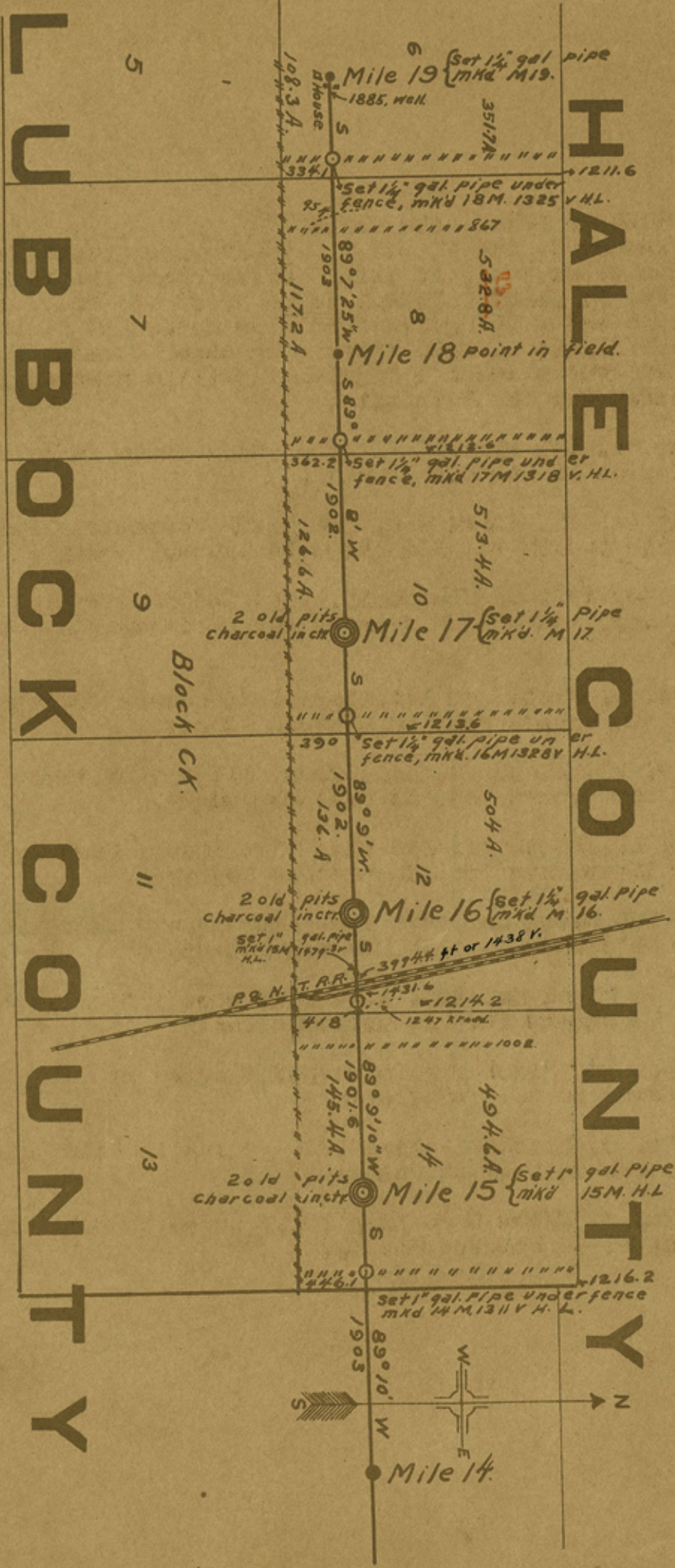
Survey No. 10, Block C K, lies 513.4 acres in Hale County and 126.6 acres in Lubbock County.

Survey No. 8, Block C K, lies <sup>523</sup>~~532.8~~ acres in Hale County and 117.8 acres in Lubbock County.

Survey No. 6, Block C K, lies 351.7 acres in Hale County and 106.3 acres in Lubbock County.



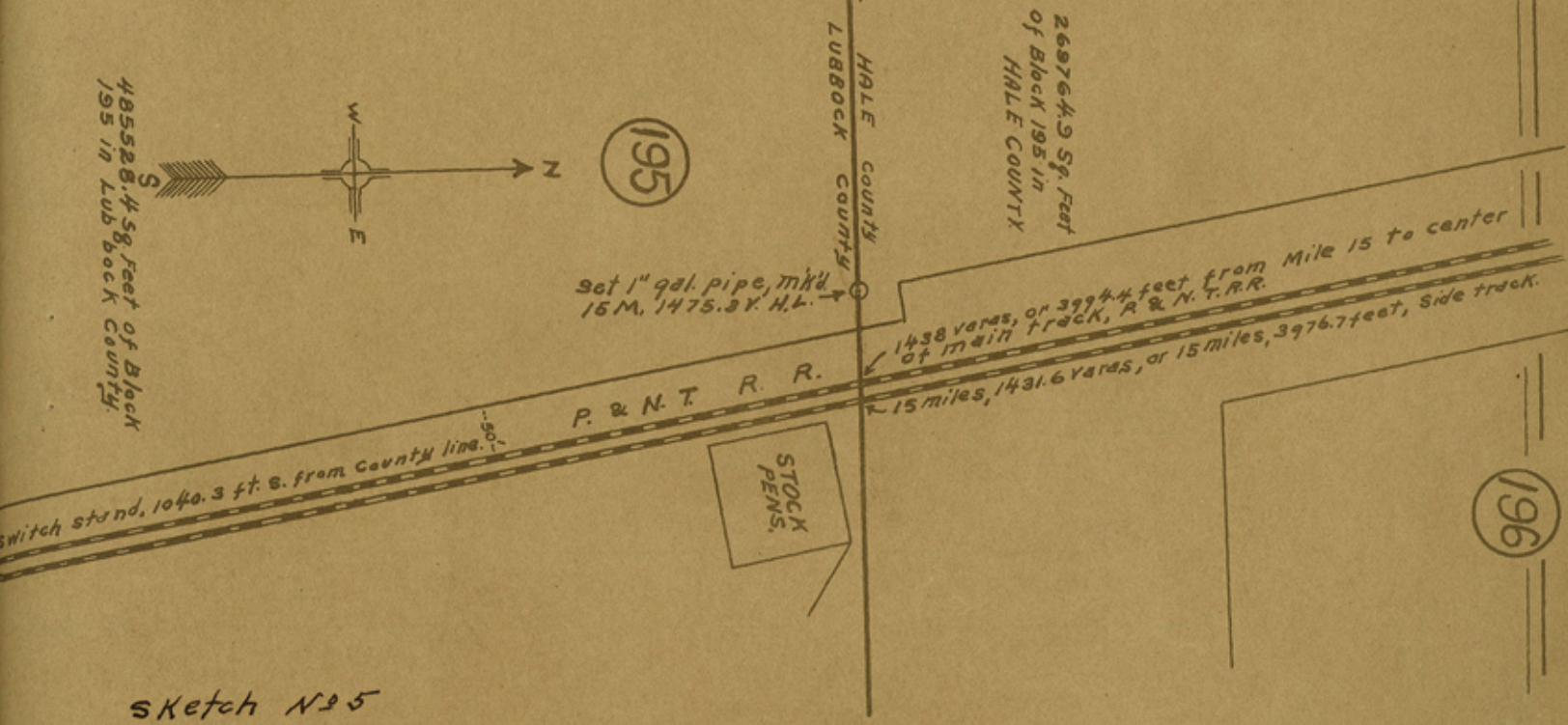
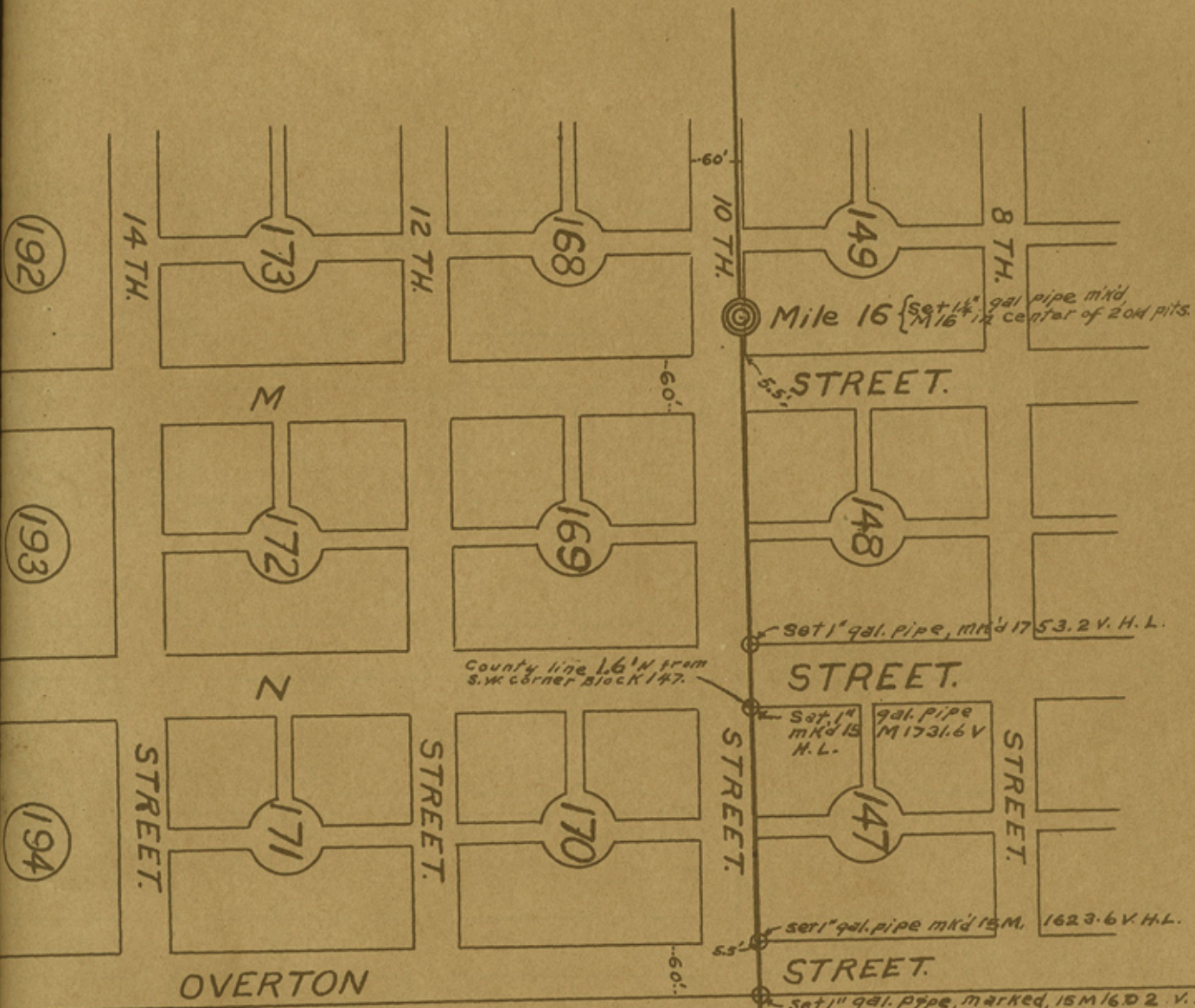
Combs 54097



FILE No 36003 Sketch No 4.

196

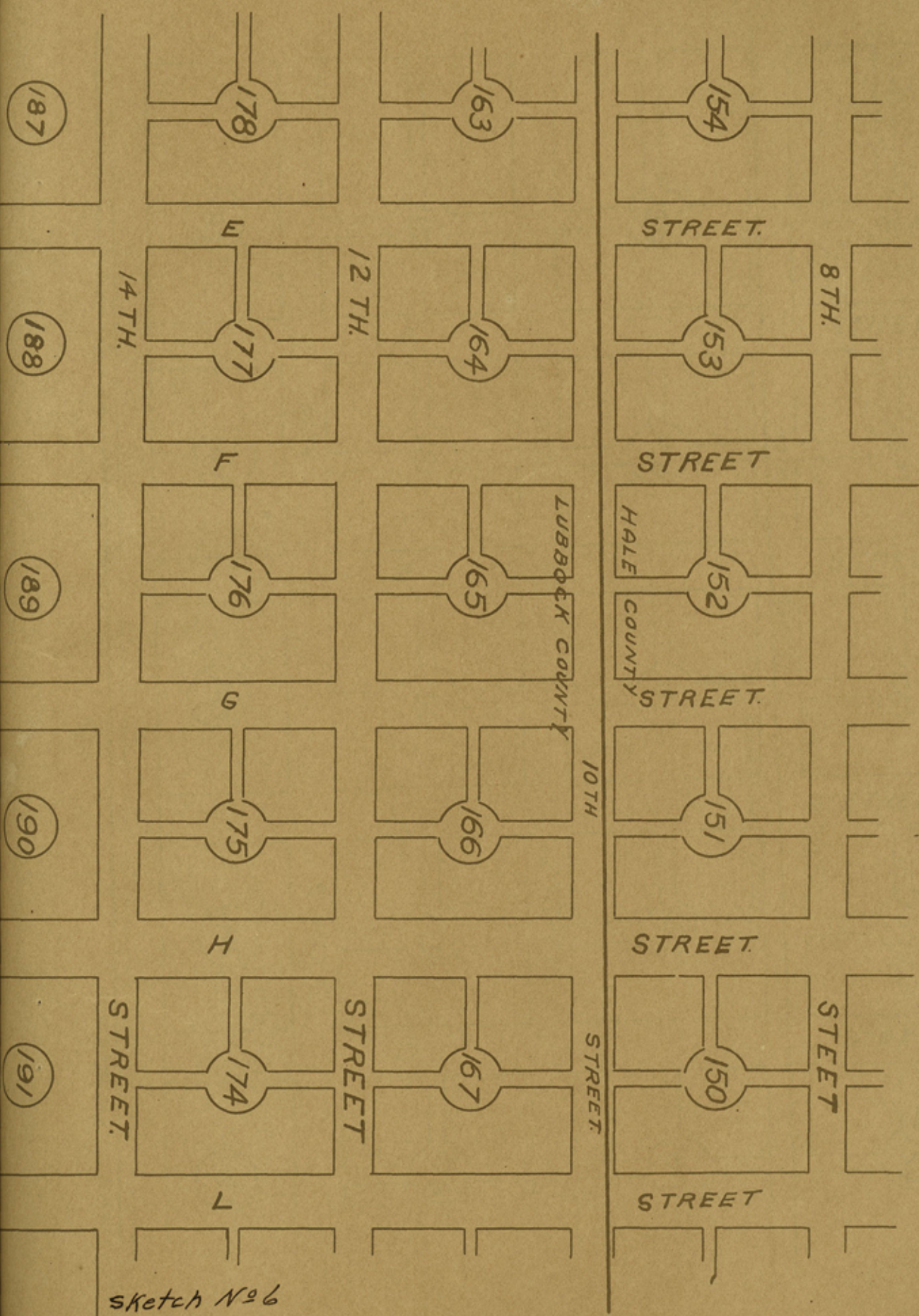
Portion of Abernathy Showing  
Position of County Line.



Sketch No 5

Counter 54098

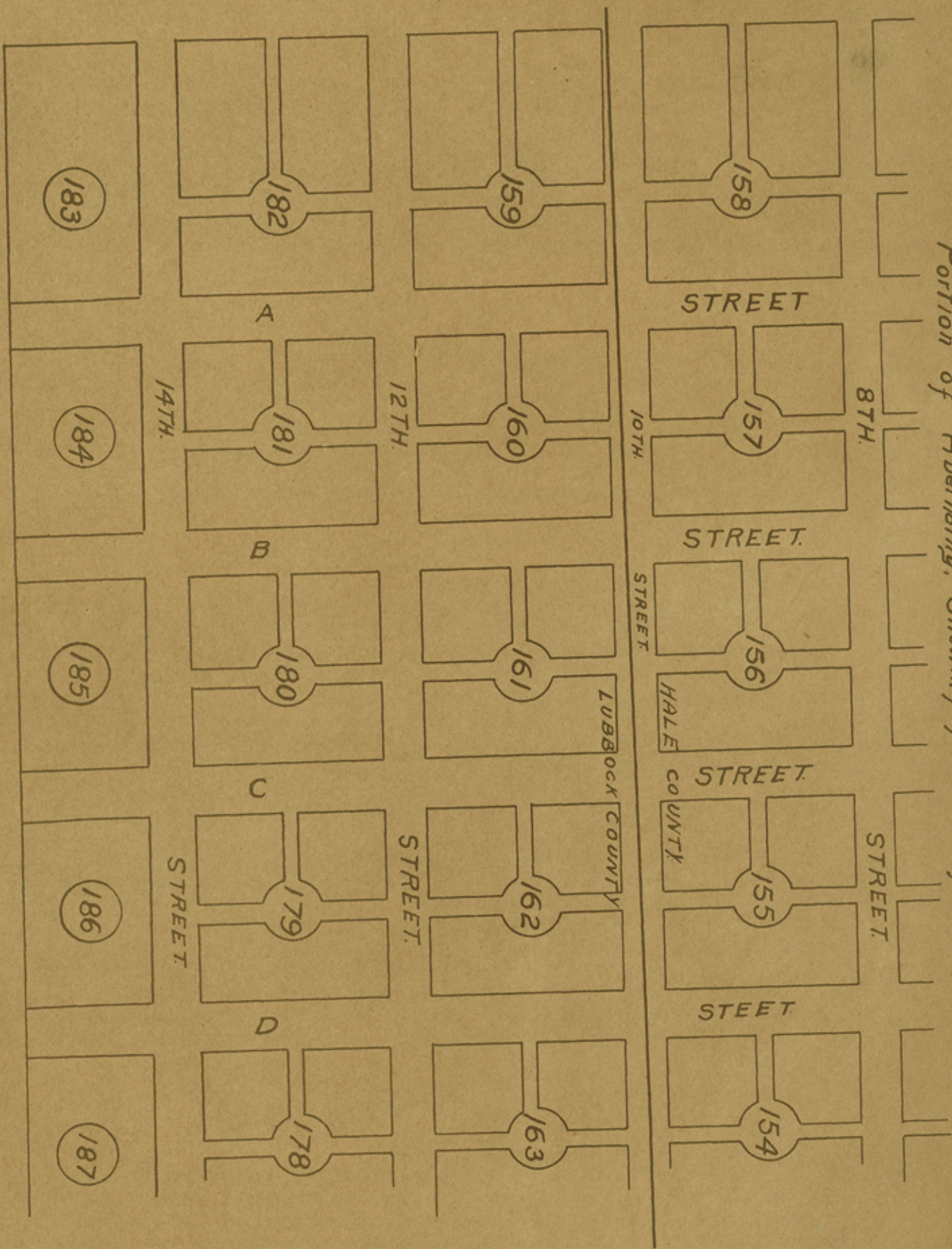
Portion of Abernathy showing  
position of County Line.



Sketch No 6

Counter 84099

Portion of Abernathy. Showing position of County Line.



FILE No 36003. Sketch No 7

Count 59100

## MILE 20.

BEGINNING at 19th. Mile, N of farm house.

Thence S.  $89^{\circ} 16' W$ , at 1209.6 varas cross the W. line of Survey No. 6, Block C K, 309.1 varas N. of its S. W. corner; at 1306 varas cross fence; at 1640 varas cross North Fork of Double Mountain Fork of Brazos River.; at 1828 varas cross road; at 1903 varas set a  $1\frac{1}{2}$ " galvanized pipe marked, M 20 H L, by charcoal in center of 2 old pits, the original 20th. mile of the Hale and Lubbock County Line, made by Surveyors Millington and White.

## MILE 21.

BEGINNING at original Mile 20.

Thence S.  $89^{\circ} 11' W$ , at 1207.6 varas cross the W. line of Survey No. 4, Block C K, 284.5 varas N. of its S. W. corner; 1320 varas set a  $1\frac{1}{2}$ " galvanized pipe marked, 20 M 1320 V H L; at 1904.3 varas set a  $1\frac{1}{2}$ " galvanized pipe marked, M 21 H L, by charcoal in center of 2 old pits, the original 21st. Mile of the Hale and Lubbock County Line, made by Surveyors Millington and White.

## MILE 22.

BEGINNING at original Mile 21.

Thence S  $89^{\circ} 12' 40" W$ . at 895 varas cross road; at 1204.3 varas cross the W. line of Survey No. 2, Block C K, 259.6 varas N. of its S. W. corner; at 1251.3 varas cross the E. line of Survey No. 23, Block D T, 48.2 varas N. of its S. E. corner; at 1329.3 varas set a  $1\frac{1}{2}$ " galvanized pipe marked, 21 M 1329.3 V H L, under fence; at 1600 varas enter lake; at 1903 varas point in lake for the 22nd. Mile of the Hale and Lubbock County Line.

## Mile 23.

BEGINNING at 22nd. Mile Point.

Thence S.  $89^{\circ} 12' 5" W$ . at 150 varas pass out of lake; at 261 and 550 varas cross roads; at 1249.3 varas cross the W. line of Survey No. 23, Block D T, 43.3 varas N. of its S. W. corner; at 1281.3 varas set a  $1\frac{1}{2}$ " galvanized pipe marked, 22 M 1281.3 V H L, under fence; at 1321 varas cross old trail; at 1905.6 varas set a  $1\frac{1}{2}$ " galvanized pipe marked, M 23 H. L. by charcoal in center of 2 old pits, the original 23rd. Mile of the Hale and Lubbock County Line, made by Surveyors Millington and White.

## MILE 24.

BEGINNING at original Mile 23.

Thence S.  $89^{\circ} 13' 20" W$ . at 300 varas enter lake; at 750 varas pass out of Lake; at 759 varas cross fence; at 830 varas cross road; at 1244.7 varas cross the W. line of Survey No. 22, Block D T, 38.4 varas N. of its S. W. corner; at 1477 varas cross road; at 1904.7 varas set a  $1\frac{1}{2}$ " galvanized pipe marked, M 24, H L, by charcoal in center of 2 old pits, the original 24th. Mile of the Hale and Lubbock County Line, made by Surveyors Millington and White.

Survey No. 6, Block C K lies 531.7 acres in Hale County and 108.3 acres in Lubbock County.

Survey No. 4, Block C K, lies <sup>540</sup>550.1 acres in Hale County and <sup>100</sup>99.9 acres in Lubbock County.

Survey No. 2, Block C K lies 548.5 acres in Hale County and 91.5 acres in Lubbock County.

Survey No. 23, Block D T lies 624.6 acres in Hale County and 15.4 acres in Lubbock County.

Survey No. 22, Block D T lies 626.3 acres in ~~Lubbock County~~ Hale County and <sup>14</sup>13.7 acres in Lubbock County.

For Map of the above field notes, see Sketch No. 8

MILE 20.

BEGINNING at original Mile 21.

Thence S 84° 22' 40" W. at 225 varas across road; at 1884.3 varas across the W. line of Survey No. 3, Block C K, 254.6 varas N. of its S. W. corner; at 1221.3 varas across the E. line of Survey No. 23, Block D T, 43.8 varas N. of its S. E. corner; at 1265.1 varas set a 1 1/2" galvanized pipe marked, 21 N 1221.3 V H L, under fence; at 1500 varas enter lake; at 1900 varas point in lake for the 22nd. Mile of the Hale and Lubbock County Line.

Counter 54102

Mile 23.

BEGINNING at 22nd. Mile Point.

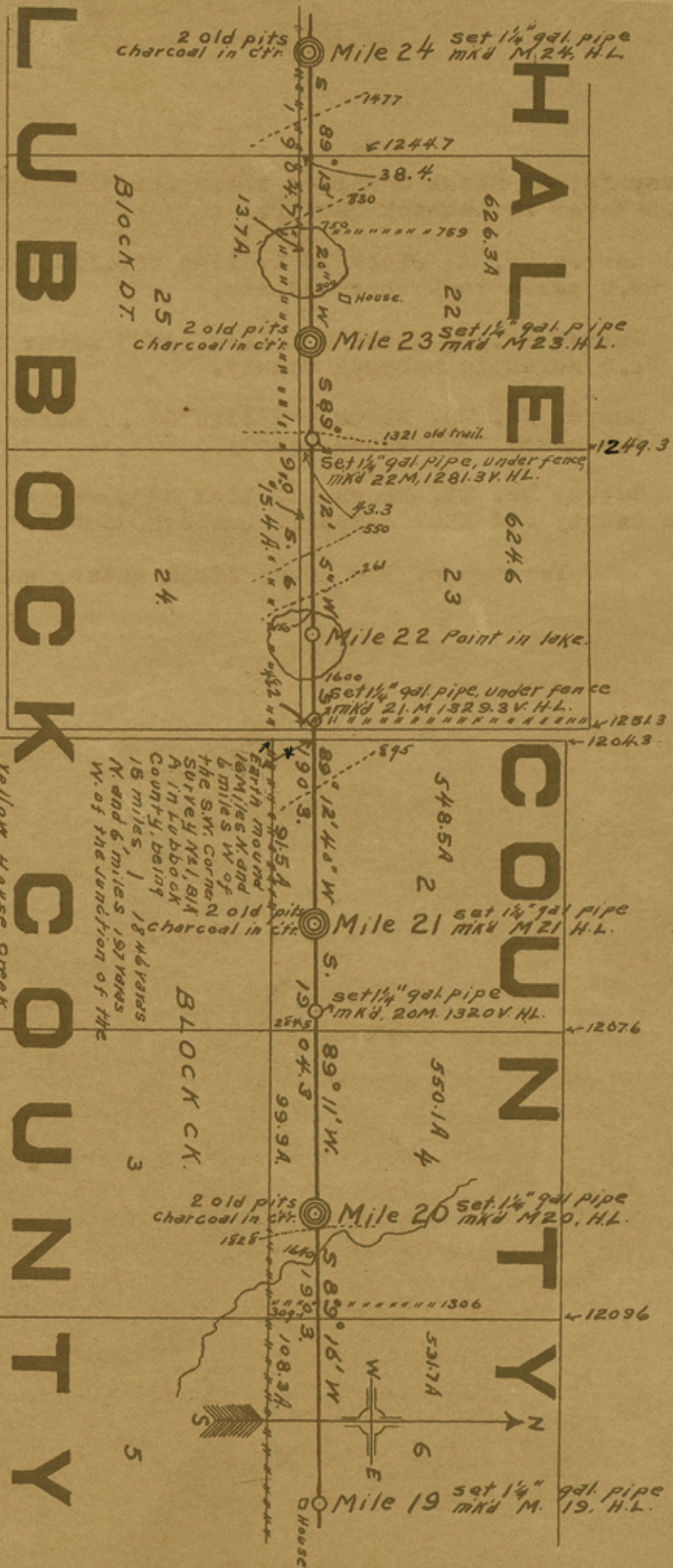
Thence S, 89° 18' 5" W. at 150 varas pass out of lake; at 201 and 550 varas across roads; at 1249.8 varas cross the W. line of Survey No. 23, Block D T, 43.8 varas N. of its S. W. corner; at 1881.3 varas set a 1 1/2" galvanized pipe marked, 22 N 1881.3 V H L, under fence; at 1381 varas cross old trail; at 1900.6 varas set a 1 1/2" galvanized pipe marked, 23 N 1900.6 V H L, by channel in center of 2 old pits, the original 22nd. Mile of the Hale and Lubbock County Line, made by Surveyors Hillington and White.

MILE 24.

BEGINNING at original Mile 23.

Thence S, 89° 13' 20" W. at 300 varas enter lake; at 700 varas pass out of lake; at 759 varas cross lanes; at 850 varas across road; at 1244.7 varas across the W. line of Survey No. 23, Block D T, 38.4 varas N. of its S. W. corner; at 1477 varas across road; at 1806.7 varas set a 1 1/2" galvanized pipe marked, 24 N 1806.7 V H L, by channel in center of 2 old pits, the original 23rd. Mile of the Hale and Lubbock County Line, made by Surveyors Hillington and White.

County 54103



FILE No 36003.

Sketch No 2

Surveyed by, W.J. Williams

R.M. 6

## MILE 25.

BEGINNING at original Mile 24.

Thence S 89° 14' 25" W. at 1242.1 varas cross the W. line of Survey No. 21, Block D T, 33.4 varas N. of its S. W. corner; same corner being 4 miles S. of the original S. E. corner of Sabine County School Land.; at 1288 varas set a  $1\frac{1}{4}$ " galvanized pipe marked, 24 M 1288 V H L, under fence; at 1904.2 varas set a  $1\frac{1}{4}$ " galvanized pipe marked M 25, H L, by one old pit, the original 25th Mile, (West pit obliterated by road), of the Hale and Lubbock County Line, made by Surveyors Millington and White.

## MILE 26.

BEGINNING at original Mile 25.

Thence S. 89° 12' 15" W. at 553 and 698 varas cross fences; at 950 varas enter lake; at 1238.9 varas cross the W. line of Survey No. 20, Block D T, 29.1 varas N. of its S. W. c corner; at 1282 varas set a  $1\frac{1}{4}$ " galvanized pipe marked, 25 M 1284.2 V H L, ~~xxxxx~~ in lake, in line with fence to South, fence corner S. 50.3 varas.; at 1300 varas pass out of lake; at 1901.8 varas set a  $1\frac{1}{4}$ " galvanized pipe marked, M 26, H L, by charcoal in center of 2 old pits, the original 26th. Mile of the Hale and Lubbock County Line, made by Surveyors Millington and White.

## MILE 27.

BEGINNING at original Mile 26.

Thence S 89° 12' 45" W. at 33 and 109 varas cross roads; at 954 varas cross road; at 1238 varas cross the W. line of Survey No. 19, Block D T, 25.8 varas N. of its S. W. corner; at 1279.8 varas set a  $1\frac{1}{4}$ " galvanized pipe marked, 26 M 1279.8 V H L, under fence; at 1902.8 varas set a  $1\frac{1}{4}$ " galvanized pipe marked, M 27 H L, by charcoal in center of 2 old pits, the original 27th mile of the Hale and Lubbock County Line, made by Surveyors Millington and White.

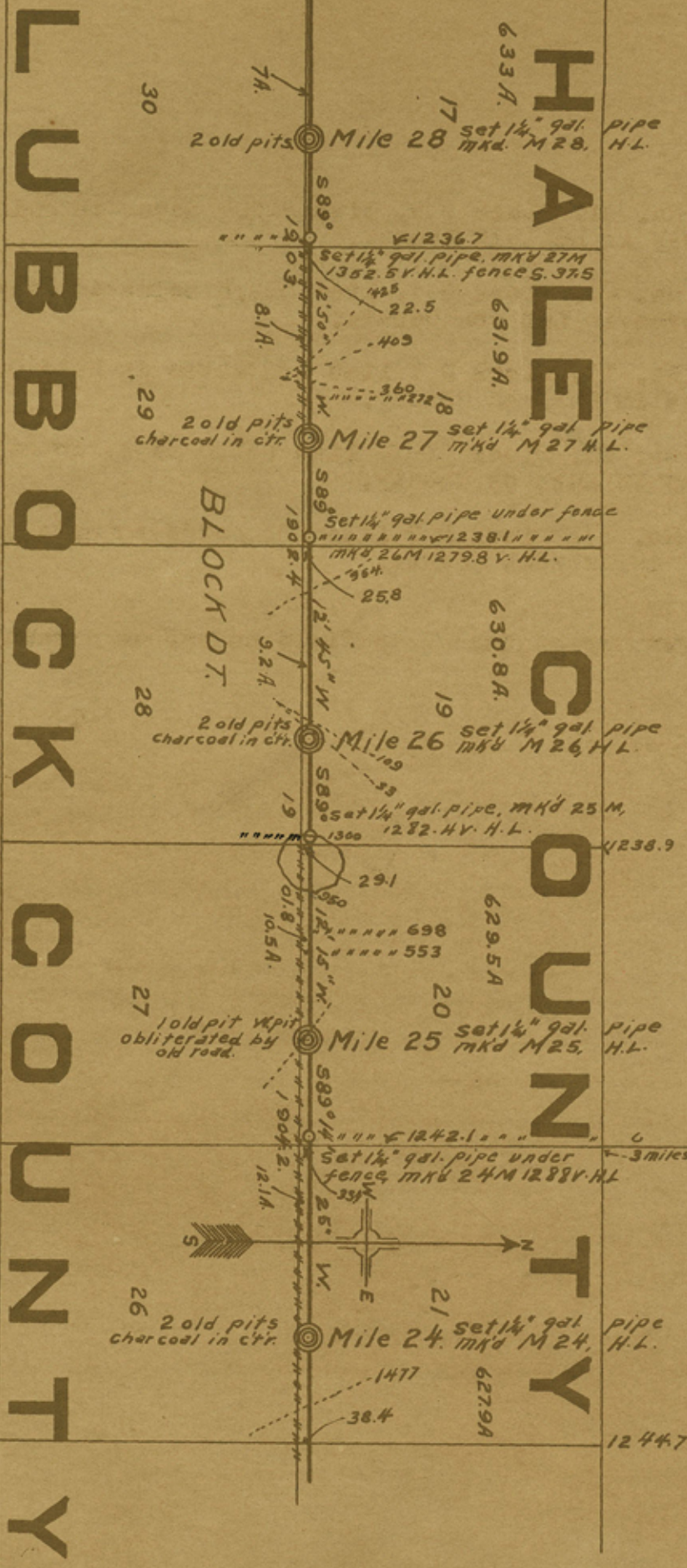
## MILE 28.

BEGINNING at original Mile 27.

Thence S. 89° 12' 50" W. at 272 varas cross fence; at 360 and 409 ~~xxxxxx~~ and 425 varas cross roads; at 1236.7 varas cross the W. line of Survey No. 18, Block D T, 22.5 varas N. of its S. W. corner; at 1352.5 varas set a  $1\frac{1}{4}$ " galvanized pie marked, 27 M 1352.5 V H L, fence S. 37.5 varas; at 1903 varas set a  $1\frac{1}{4}$ " galvanized pipe marked, M. 28 H L, in the center of 2 old pits, the original 28th. Mile of the Hale and Lubbock County Line, made by Surveyors Millington and White.







Counter 54106

FILE No 36003

Sketch No 9.

Surveyed by W.L. Williams

## MILE 29.

BEGINNING at original Mile 28.

Thence S 89° 12' 15" W. at 1212.4 varas set a 1½" galvanized pipe marked, 28 M 1212.4 V H L, under fence; at 1224.7 varas cross the W. line of Survey No. 17, Block D T, 19.2 varas N. of its S. W. corner; at 1902 varas point in field, the 29th. Mile of the Hale and Lubbock County Line.

## MILE 30.

BEGINNING at 29th. Mile point.

Thence S. 89° 11' 40" W. at 1233.7 varas cross the W. line of Survey No. 16, Block D T, 16 varas N. of its S. W. corner; at 1733.7 varas cross the W. line of Survey No. 32, Block D. T. ; at 1811.5 varas set a 1½" galvanized pipe, marked, 29 M 1811.5 V H L, under fence; at 1893.7 varas cross the E. line of Survey No. 118, Block A, 449 varas N. of its S. E. corner; at 1902 varas set a 1½" galvanized pipe marked S. W. H in the center of 4 old pits, made by Surveyors Millington and White, the original S. W. corner of Hale, the S. E. corner of Lamb, the N. E. corner of Hockley and the N. W. corner of Lubbock Counties, from whence a pipe marked, S. W. H., set by Crews, bears N. 88° 58' W. 583.3 varas.

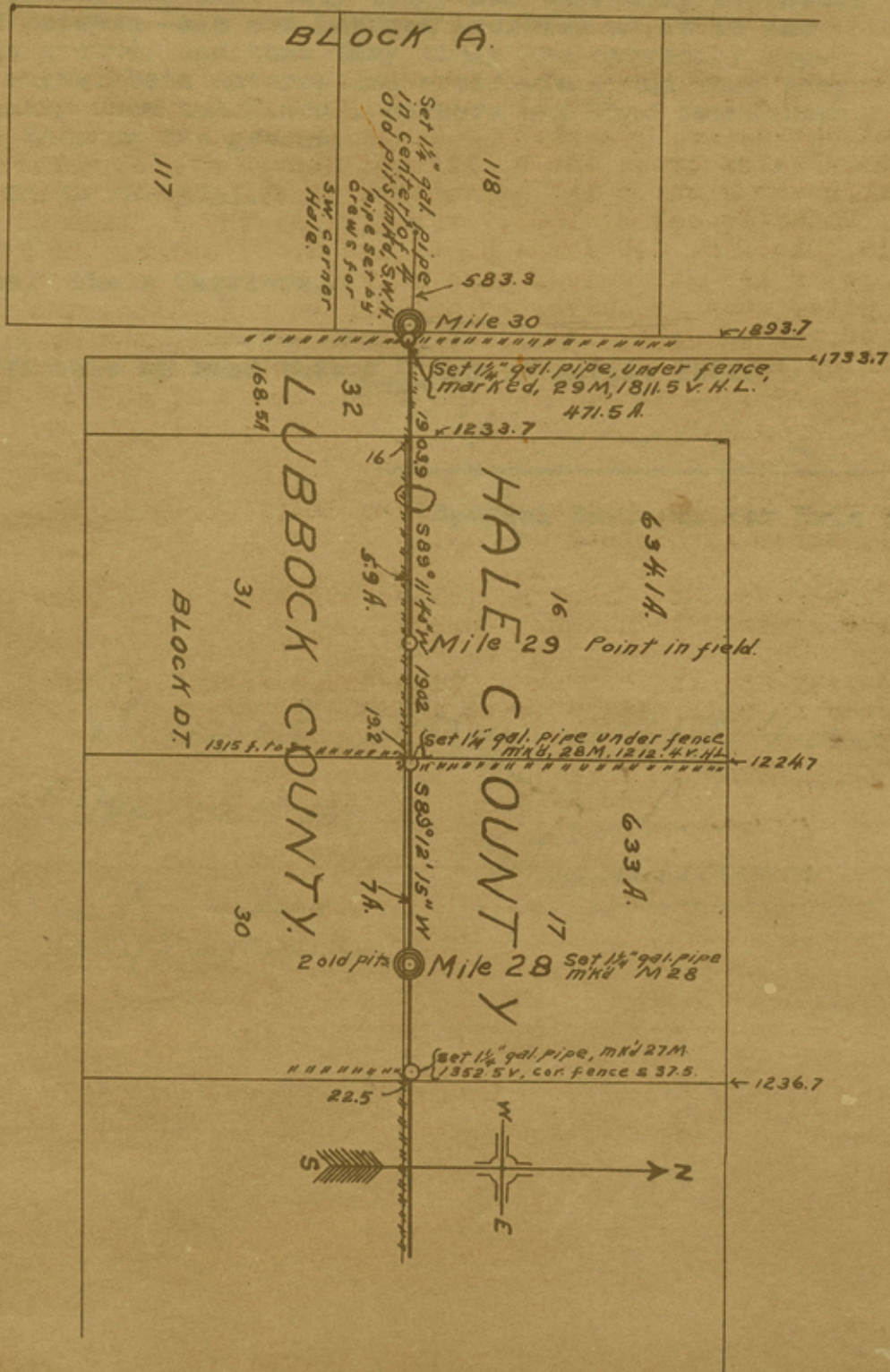
Survey No. ~~16~~, Block, D T, lies ~~634.2~~ acres in Hale County, and ~~5.2~~ acres in Lubbock County.

Survey No. 32, Block D T, lies ~~471.5~~ acres in Hale County, and 168.5 acres in Lubbock County.

Survey No. 118, Block A, lies ~~498.3~~ acres in Lamb County, ~~7.3~~ acres in Hale, ~~141.2~~ acres in Hockley and ~~0.7~~ acres in Lubbock County.

c For Map of the above field notes see Sketch No.10.

County 54108



FILE No 36003.

Sketch No 10

F.R.M.G.

I, W. J. Williams, Special Surveyor for Hale County, South Boundary, do hereby certify that the foregoing 29 pages, numbered from 1 to 29, inclusive, showing field notes and maps, are true and correct, and that they truly and correctly represent the Common Line Between Hale and Lubbock Counties as it is now located upon the ground, and that they truly and correctly represent all the marks, both natural and artificial, and that they truly and correctly show the lines, corners and land boundaries just as I found them on the ground.

Surveyed March 23 to 28, 1914.

T. R. McGee  
Clayton Williams } Chain Carriers.

Witness my hand this 22 day of April, 1914.

W J Williams  
Special Surveyor for Hale County

Received May 4<sup>th</sup> 1914 and  
Approved May 20, 1914.  
E. von Rosenberg  
Chief Draftsman  
J. Robison  
Commissioner

The following tabulation shows area corrections for the 1915 Abstract, as determined by the Common Boundary between Hale and Lubbock Counties run by Ira Millington, State Surveyor and L. A. White, Surveyor of Hale County, November 4 to 12, 1891, and filed in the General Land Office November 16, 1891, and approved December 2, 1891. W. J. Williams, Special Surveyor for Hale County on March 23 to 28, 1914, retraced, re-marked, and verified said Common Boundary between said Counties, and same was received by this office May 4, 1914, and approved May 20, 1914.

SEC. NO.	BLK. NO.	SPLITS	NUMBER OF ACRES				FILE NO.
			HALE	LUBBOCK	FLOYD	CROSBY	
68	C	NW $\frac{1}{4}$	160				F 102952
		NE $\frac{1}{4}$	118		42		F 70208
		SW $\frac{1}{4}$	89	71			F 102953
		SE $\frac{1}{4}$	66	53	22	19	F 120557
103	C	all	504-7/10	135-3/10			S 11740
106	C	N $\frac{1}{2}$	320				F 96974
		W $\frac{5}{8}$ S $\frac{1}{2}$	118	82			F 104625
		E $\frac{3}{8}$ S $\frac{1}{2}$	70-7/10	49-3/10			F 56170
141	C	all	512	128			S 11858
144	C	all	537	113			F 56868
5	C2	all	534-7/10	105-3/10			S 13585
6	C2	all	542	98			F 67604
J.F.D.	SF	all	248	5			SF 6236
8	PF	W Part	176 $\frac{1}{2}$	43			SF 3872
		E Part	193	47			F 105431
7	PF	all	376-7/10	82-3/10			SF 3871
6	PF	all	366	76			SF 3870
5	PF	all	382	63			SF 3869
4	PF	all	280	41-7/10			SF 3933
3	PF	all	396	51			SF 3932
2 $\frac{1}{2}$	PF	all	200	23 $\frac{1}{2}$			F 77328
2	PF	W Part	191-8/10	18			SF 3919
		E Part	218	22			F 111700
1	PF	all	389 $\frac{1}{2}$	33			SF 3918
14	CK	N $\frac{1}{2}$	320				F 62656
		SW $\frac{1}{4}$	89-6/10	70-4/10			F 90999
		SE $\frac{1}{4}$	85	75			F 116411
12	CK	all	504	136			F 62655
10	CK	all	513-4/10	126-6/10			F 57263
8	CK	all	523	117			F 60433
6	CK	SE $\frac{1}{4}$ & E $\frac{1}{4}$ of SW $\frac{1}{4}$	401	39			F 60182
N $\frac{1}{2}$ & W $\frac{1}{4}$ of SW $\frac{1}{4}$		of SW $\frac{1}{4}$	130-7/10	69-3/10			F 119983
4	CK	all	540	100			F 63414
2	CK	all	548 $\frac{1}{2}$	91 $\frac{1}{2}$			F 48930
23	DT	all	624-6/10	15-4/10			S 13055
22	DT	all	626	14			F 52283
21	DT	all	628	12			S 13054
20	DT	all	629 $\frac{1}{2}$	10 $\frac{1}{2}$			F 53284
19	DT	all	631	9			S 13053
18	DT	all	632	8			F 53287
17	DT	all	633	7			S 12425
16	DT	all	634	6			F 57569
32	DT	N Part	302 $\frac{1}{2}$				F 117850
		S Part	168 $\frac{1}{2}$	168 $\frac{1}{2}$			F 62845
33	DT	N Part	155-8/10				SF 10704
		S Part	72	88	HOCKLEY	LAMB	F 119785
118	A	all	8		148	484	S 18257

Carbon of this mailed one each to Tax Assessor of Hale and Lubbock counties and to Special Surveyor W. J. Williams May 23-1914

A. Sayers  
Abstract Clerk