

ORDER APPOINTING A SURVEYOR.

State of Texas:

County of Hale: August Term, 1931.

On this, the 30th day of September, 1931, this cause came on for hearing, and it appearing to the Court that the east line and the west line of said county are not sufficiently definite and well defined, and it further appearing to the Court that said lines of Hale County should be definite and well defined, and it further appearing to the Court, and the Court deeming it necessary that a surveyor be appointed to run said east line and west line of said Hale County and to place markers at the corners of said county and on each side of all highways crossing said lines, W.J. Williams, a competent surveyor of said county is hereby appointed for that purpose.

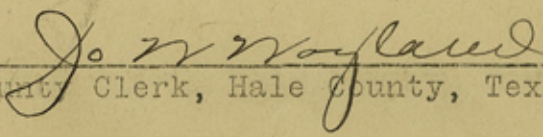
E.C. Abernethy

County Judge, Hale County, Texas.

State of Texas,

County of Hale. I, Jo. W. Wayland, County Clerk, in and for Hale County, Texas, do hereby certify that the above and foregoing is a true and correct copy of an order of the Court, appointing W. J. Williams, to survey the east and west lines of Hale County, Texas, as the same appears of record in Vol. 5, pages 431 and 432, of the County Minutes of Hale County, Texas.

Witness my hand and the seal of said County at office in Plainview, Texas, on this the 25th day of January A D 1932.


County Clerk, Hale County, Texas.



Hale Co Bdry Line 9

THE STATE OF TEXAS : IN THE COUNTY COURT OF LAMB COUNTY, TEXAS.
: :
COUNTY OF LAMB : NOVEMBER TERM, 1931.

On this the 21st day of November, A. D. 1931, this court being advised that Hale County, Texas, had by and through its County Court, entered an order employing W.J. Williams, a licensed land surveyor of the State of Texas, to survey the west line of Hale County, the same being the east boundary line of Lamb County, and it further appearing to this court that said boundary line between said counties has never been definitely determined and that it is to the best interest of both of said counties to have said boundary line definitely established, does hereby concur with said County Court of Hale County in the establishment of said boundary line and does hereby designate the said W.J. Williams as their agent in the surveying of said boundary line and hereby agree that all of said acts shall become binding on said county in the establishment of said boundary line, and does hereby waive any and all notices as provided by law requiring the county court to give twenty days notice and hereby agrees that said survey may be made at any time.

Simon D. Hay

County Judge of Lamb County, Texas.

State of Texas,
County of Lamb. I, A.H. McGavock, Clerk of the County Court of Lamb County, Texas, do hereby certify that the above and foregoing is a true and correct copy of the County Court order employing W. J. Williams, to survey the east line of Lamb County, Texas, as the same appears on file and of record in my office in Vol. 2, page 155, of the Minutes of The County Court, Lamb County, Texas. Given under my hand and seal of said court this 21st day of November, A D 1931

A. H. McGavock,
Clerk of Lamb County, Texas.

By Charlie Fay Owen
Deputy.

HALE - LAMB COUNTY BOUNDARY

To The Honorable County Courts of Hale and Lamb Counties:-

Responding to your orders, I beg to make the following report:

During the year 1891, State Surveyor Ira Millington, under instructions from the Commissioner of The General Land Office, ran and marked the south line of Hale County as well as other county lines further east. His reports were approved by the Land Office.

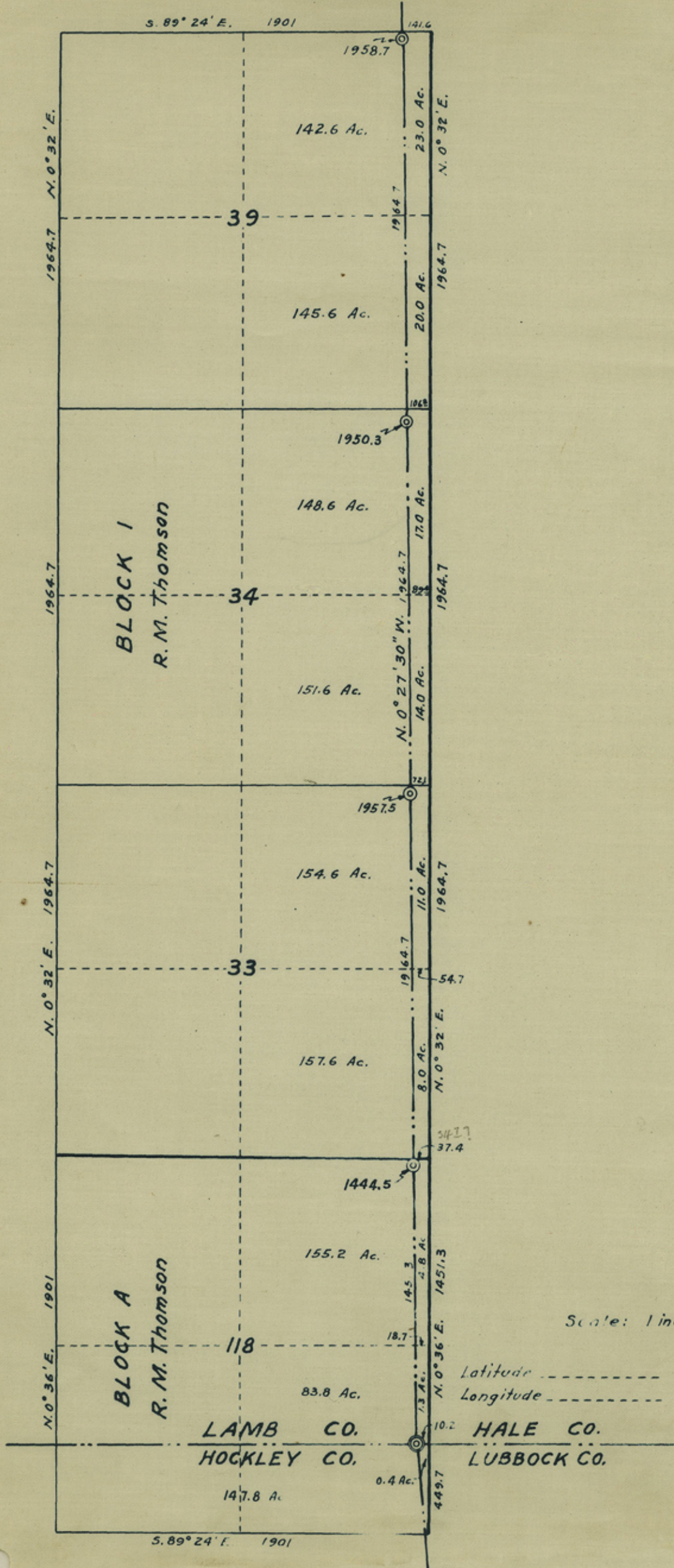
Later, Surveyor T.L.Crews was employed by Hale County and several of the neighboring counties to run their lines including the line between Hale and Lamb counties.

He established the northwest corner of Hale County and ran southward intersecting Millington's line projected 583.3 varas west of Millington's corner and made a new corner for the southwest corner of Hale county.

His report on this line was disapproved by the Commissioner of the General Land Office because it did not strike Millington's corner. Mr. Crews corrected his report by interlining, making the course call S.0°30'E. and calling for the marks as bearing west the proper distance so that the line would strike Millington and called for his own corner as a bearing mark.

I am familiar with the marks at the two common corners of Hale and Lamb counties but all of the intervening marks seem to have been destroyed. I have surveyed and marked a line joining these county corners, placing concrete markers beside the roads crossing the line rather than at mile points which generally fall in cultivated land and the course of this line, running from the south, is N.0°27'30"W.

The maps included with the following fieldnotes, show how subdivisions are crossed to assist assessors and owners since the county line is not parallel with survey lines.

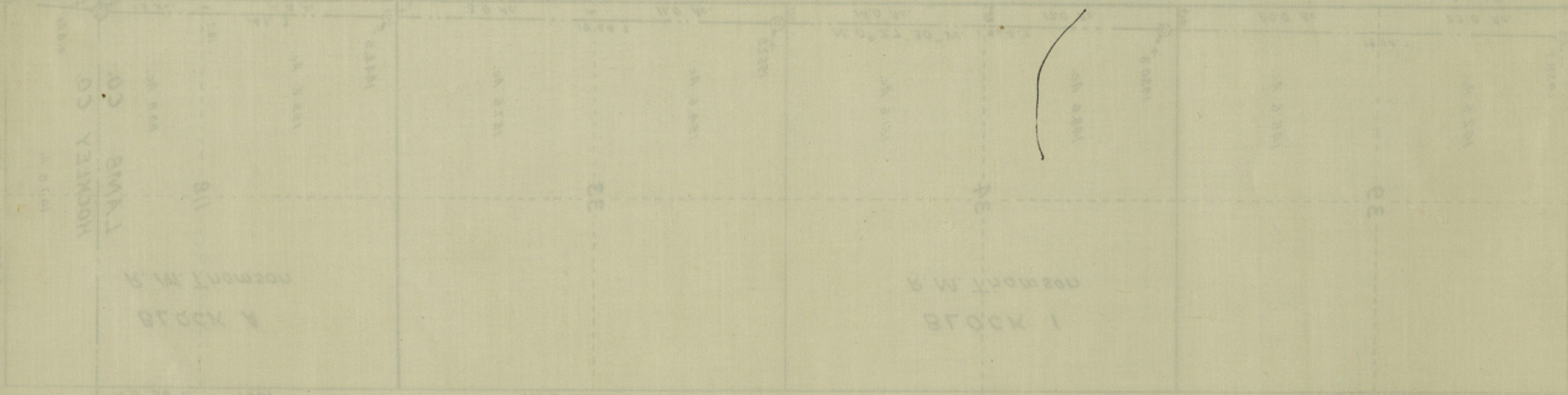


Scale: 1 inch = 600 varas.

Latitude -----
Longitude -----



County 54115



Hale Co. Bdry. Linc #9

X

FIELD NOTES

Beginning at concrete frustrum of pyramid, 12 inches square at top and standing 4 feet high, placed by A.L.Harris, County Surveyor of Lubbock county, in Millington's mound and 4 pits, the southwest corner of Hale county, on which monument I placed a bronze disc, 5 inches in diameter marked HALE LAMB HOCKLEY LUBBOCK. This monument is on west side of road, in Section No. 118, Block A, R. M. Thomson, 10.2 varas from its east line and 449.5 varas from its southeast corner;

Thence $N.0^{\circ}27'30"W.$ at 1444.5 varas pass concrete frustrum of cone, 36 inches long, 5 inches in diameter at top, 8 inches at bottom, set in ground, on top of which is a bronze disc, 3 inches in diameter marked HALE LAMB 1930, in all 1451.3 varas to north line of Section No. 118, Block A, 34.7 varas from its northeast corner;

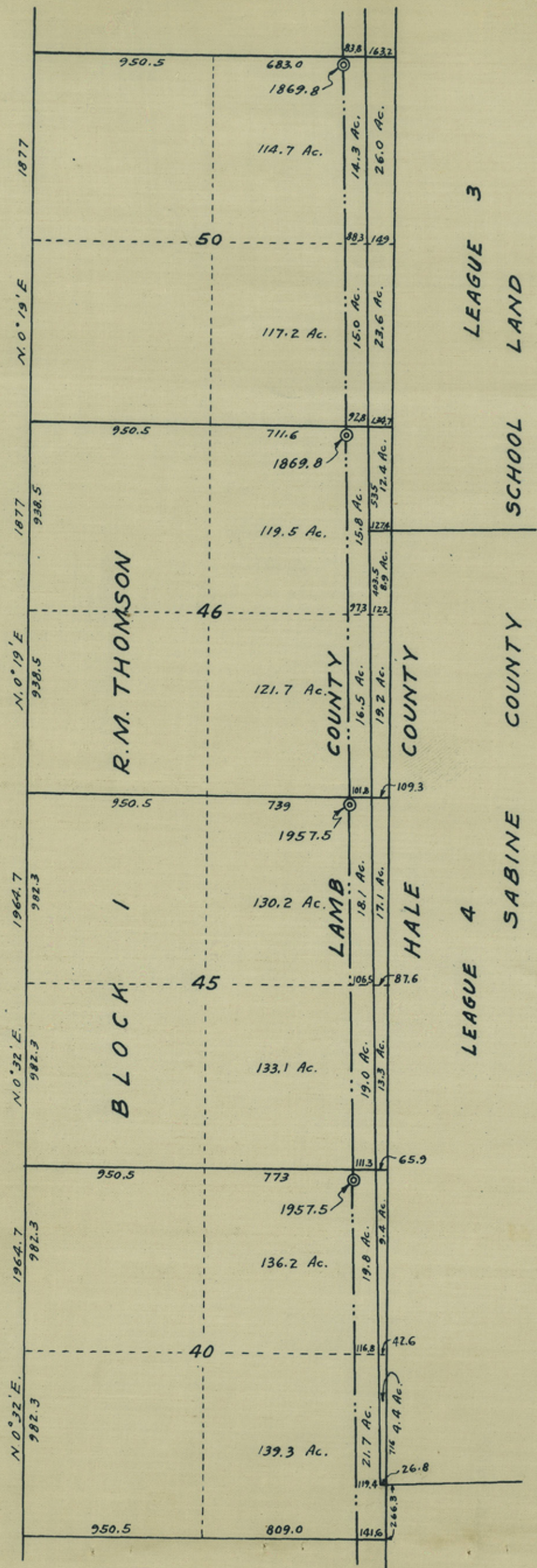
Thence $N.0^{\circ}27'30"W.$ at 1957.5 varas pass concrete frustrum of cone, 36 inches long, 5 inches in diameter at top, 8 inches at bottom, set in ground, on top of which is a bronze disc, 3 inches in diameter marked HALE LAMB 1930, in all 1964.7 varas to north line of section No. 33, Block 1, R.M.Thomson, 72.1 varas from its northeast corner;

Thence $N.0^{\circ}27'30"W.$ at 1950.3 varas pass concrete frustrum of cone, 36 inches long, 5 inches in diameter at top, 8 inches at bottom, set in ground, on top of which is a bronze disc, 3 inches in diameter marked HALE LAMB 1930, in all 1964.7 varas to north line of Section No. 34, Block 1, R.M.Thomson, 106.8 varas from its northeast corner;

Thence $N.0^{\circ}27'20"W.$ at 1958.7 varas pass concrete frustrum of cone, 36 inches long, 5 inches in diameter at top, 8 inches at bottom, set in ground, on top of which is a bronze disc, 3 inches in diameter marked HALE LAMB 1930, in all 1964.7 varas to north line of Section No. 39, Block 1, R.M.Thomson, 141.6 varas from its northeast corner;

Hale Co. Bdry Line #9

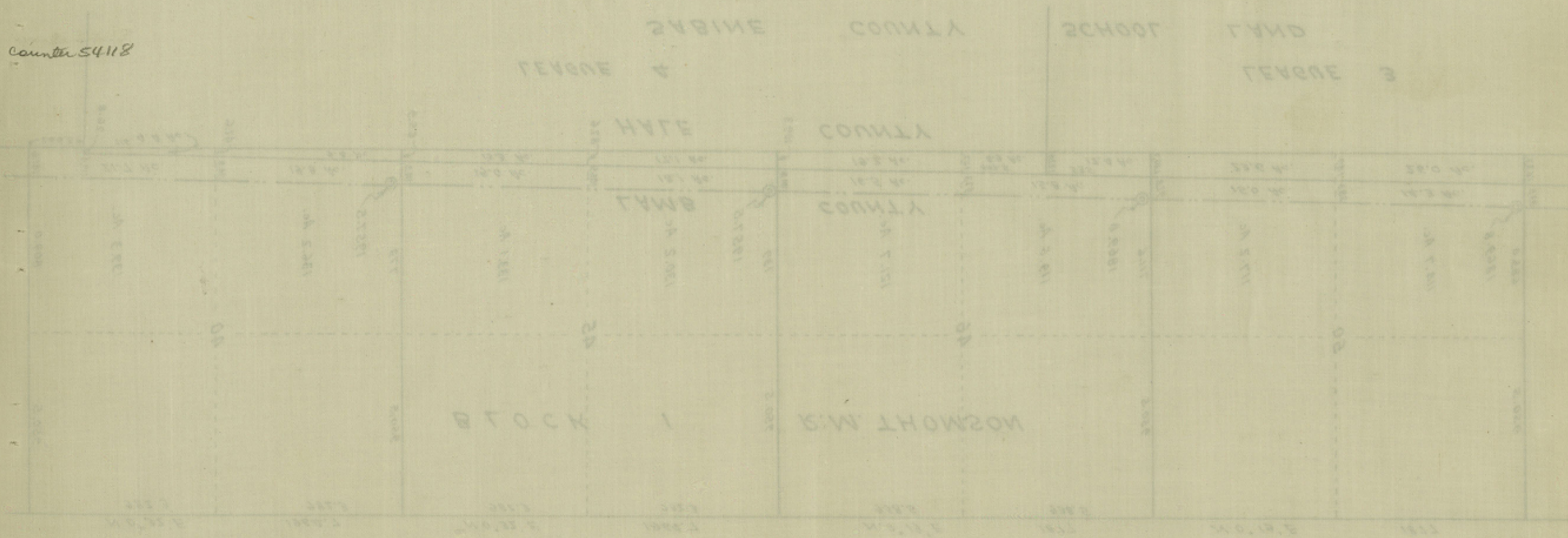
B5



County 54 117



county 54118



Thence N.0°27'30"W. at 262.9 varas cross projection of south line of League No.4, Sabine County school land, ~~119.4~~ varas westward from its southwest corner, at 1957.5 varas pass concrete frustrum of cone, 36 inches long, 5 inches in diameter at top, 8 inches at bottom, set in ground, on top of which is a bronze disc, 3 inches in diameter marked HALE LAMB 1930, in all 1964.7 varas to north line of Section No. 40, Block 1, 1723.5 varas from its northwest corner;

Thence N.0°27'30"W. at 1957.5 varas pass concrete frustrum of cone, 36 inches long, 5 inches in diameter at top, 8 inches at bottom, set in ground, on top of which is a bronze disc, 3 inches in diameter marked HALE LAMB 1930, in all 1964.7 varas to north line of section No. 45 Block 1, R.M.Thomson, 1689.5 varas from its northwest corner;

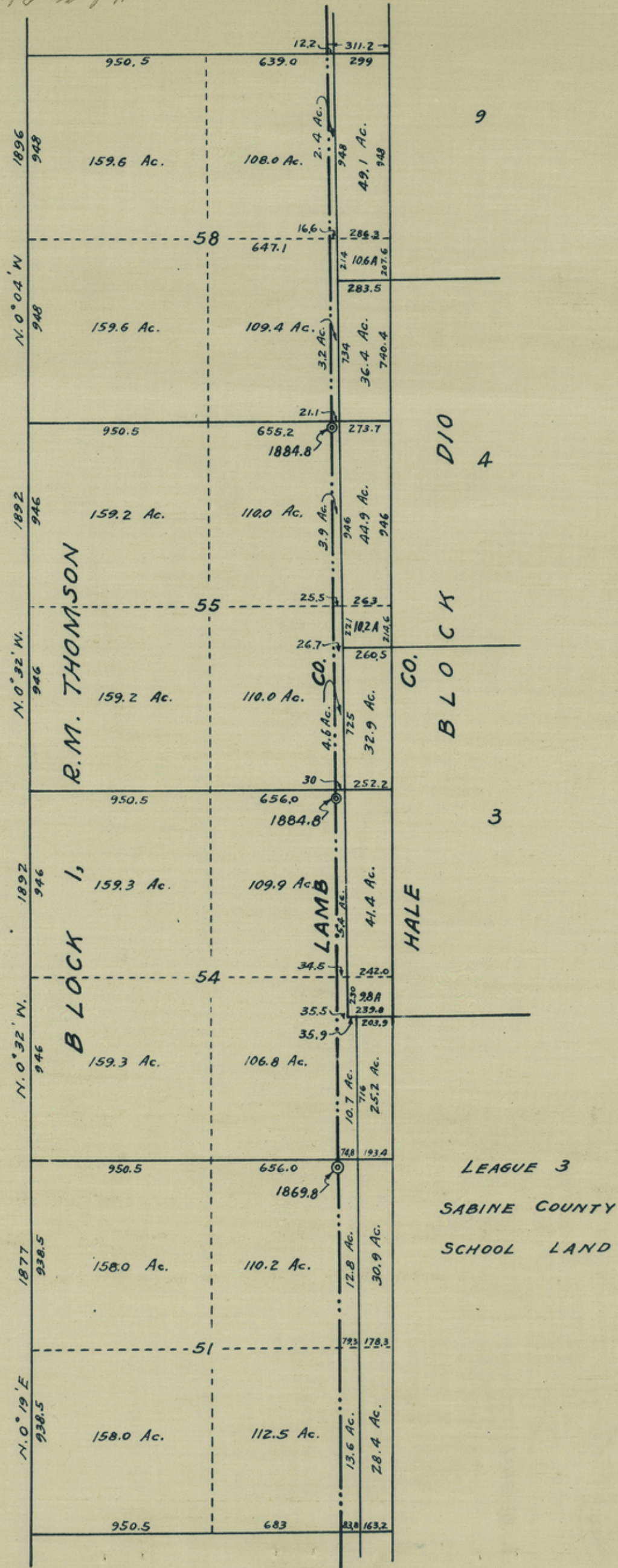
Thence N.0°27'30"W. at 1869.8 varas pass concrete frustrum of cone, 36 inches long, 5 inches in diameter at top, 8 inches at bottom, set in ground, on top of which is a bronze disc, 3 inches in diameter marked HALE LAMB 1930, in all 1877 varas to north line of Section No. 46, Block 1, R.M.Thomson, 1662.1 varas from its northwest corner;

Thence N.0°27'^{30"?}20"W. at 1869.8 varas pass concrete frustrum of cone, 36 inches long, 5 inches in diameter at top, 8 inches at bottom, set in ground, on top of which is a bronze disc, 3 inches in diameter marked HALE LAMB 1930, in all 1877 varas to north line of Section No. 50, Block 1, R.M.Thomson, 1633.5 varas from its northwest corner;

here

Hale Co. Edry Line #9

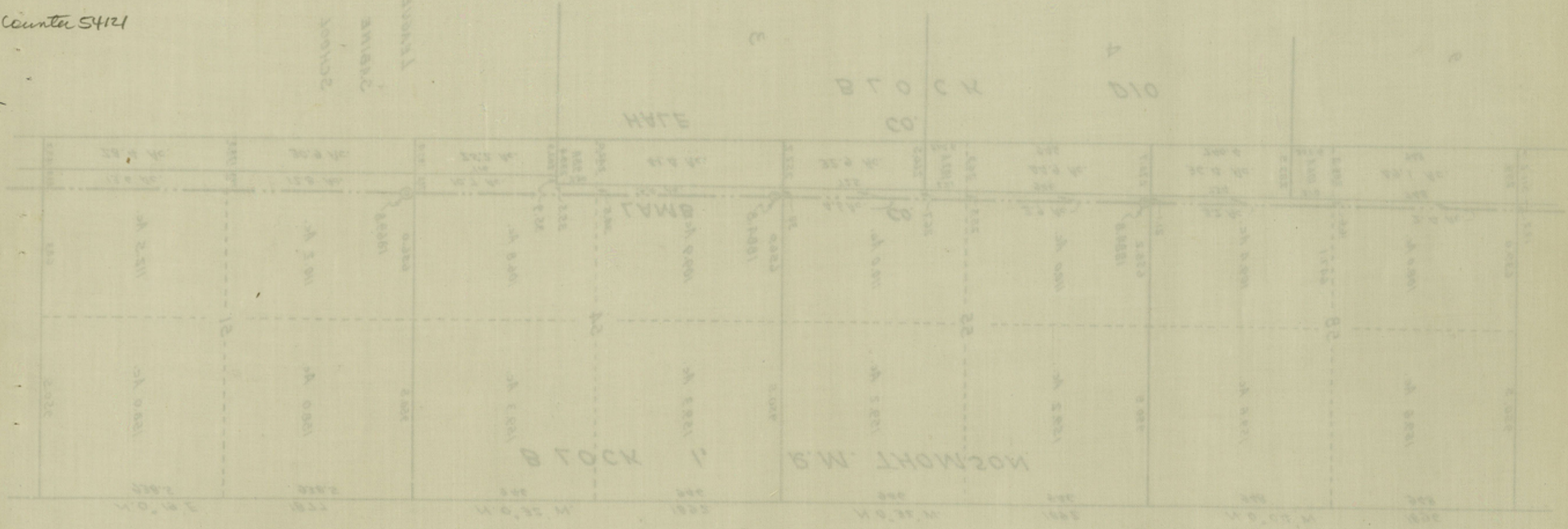
11
87





Counter 5414

SCHOOL LAND
SABINE COUNTY
TEXAS

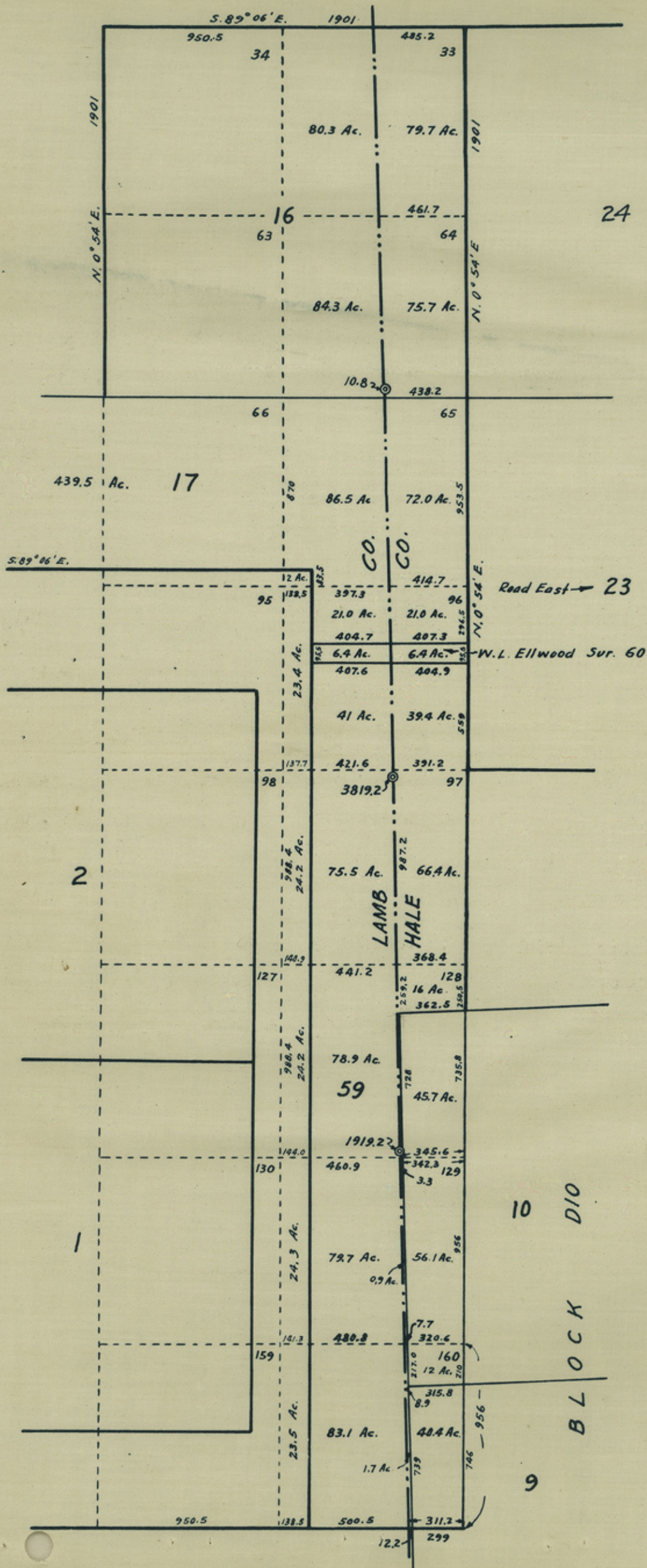


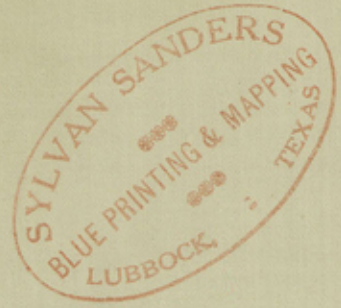
Thence N.0°27'30"W. at 1869.8 varas pass concrete frustrum of cone, 36 inches long, 5 inches in diameter at top, 8 inches at bottom, set in ground, on top of which is a bronze disc, 3 inches in diameter marked HALE LAMB 1930, in all 1877 varas to north line of Section No. 51, Block 1, 1606.5 varas from its northwest corner;

Thence N.0°27'30"W. at 716 varas cross projection of south line of Section No.3, Block D 10, 35.5 varas westward from its southwest corner, at 1884.8 varas pass concrete frustrum of cone, 36 inches long, 5 inches in diameter at top, 8 inches at bottom, set in ground, on top of which is a bronze disc, 3 inches in diameter marked HALE LAMB 1930, in all 1892 varas to north line of section No. 54 Block 1, R.M.Thomson, 1606.5 varas from its northwest corner;

Thence N.0°27'30"W. at 1884.8 varas pass concrete frustrum of cone, 36 inches long, 5 inches in diameter at top, 8 inches at bottom, set in ground, on top of which is a bronze disc, 3 inches in diameter marked HALE LAMB 1930, in all 1892 varas to north line of Section No. 46, Block 1, R.M.Thomson, 1605.7 varas from its northwest corner;

Thence N.0°27'³⁰'20"W. 1896 varas to north line of Section No. 58, Block 1, R.M.Thomson, 1589.5 varas from its northwest corner;





Counter 54124

O C K

D I O

10

54

MAY EMBROIDERY CO

53

W T G E

L M B

20

88

11

12

S

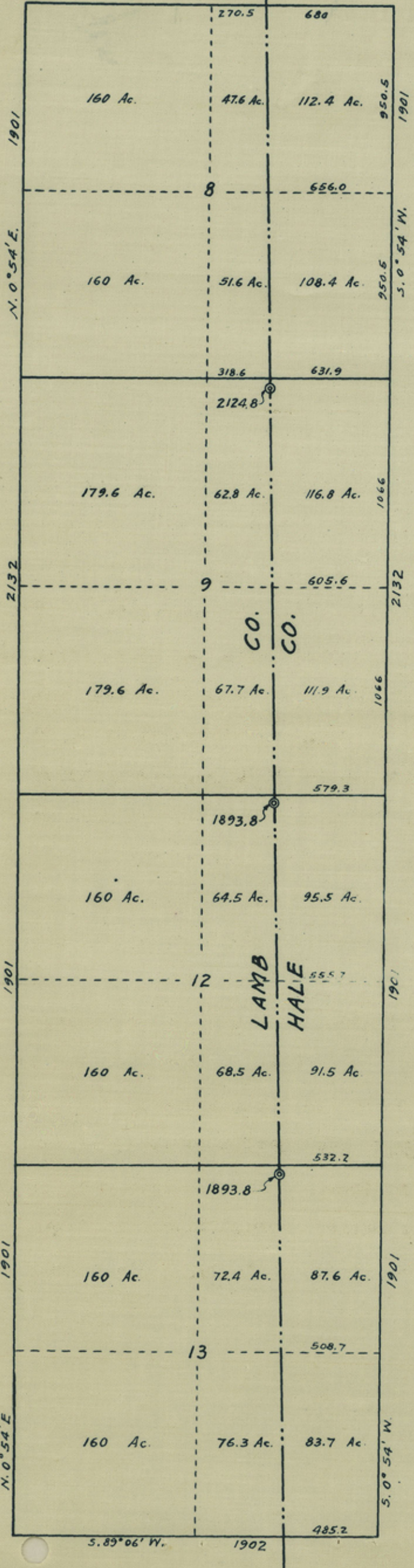
Thence N.0°27'30"W. 1912 varas to north line of Tract No. 129 ELWOOD FARMS Subdivision No. 2 of the SPADE RANCH, 345.6 varas from its northeast corner, at 1919.2 varas pass concrete frustrum of cone, 36 inches long, 5 inches in diameter at top, 8 inches at bottom, set in ground, on top of which is a bronze disc, 3 inches in diameter marked HALE LAMB 1930, at 2640 varas cross northwest corner of Section No.10, Block D 10, at 3879.2 varas pass concrete frustrum of cone, 36 inches long, 5 inches in diameter at top, 8 inches at bottom, set in ground, on top of which is a bronze disc, 3 inches in diameter marked HALE LAMB 1930, at 3886.4 varas the north line of tract No. 97 of said subdivision, 391.2 varas from its northeast corner, in all 4445.4 varas to north line of Section No. 59, Block 1, R.M.Thomson, 404.9 varas from its northeast corner;

Thence N.0°27'30"W. 95.5 varas to south line of Section No.17, Block B, R.M.Thomson, 407.3 varas from its southeast corner;

Thence N.0°27'30"W. 1250 varas to north line of Section No. 17, Block B 438.2 varas from its northeast corner;

Thence N.0°27'^{30"}20"W. at 10.8 varas pass concrete frustrum of cone, 36 inches long, 5 inches in diameter at top, 8 inches at bottom, set in ground, on top of which is a bronze disc, 3 inches in diameter marked HALE LAMB 1930, in all 1901 varas to north line of Section No. 16, Block B, R.M.Thomson, 485.2 varas from its northeast corner;

Hale Co. Bdry. Line #9

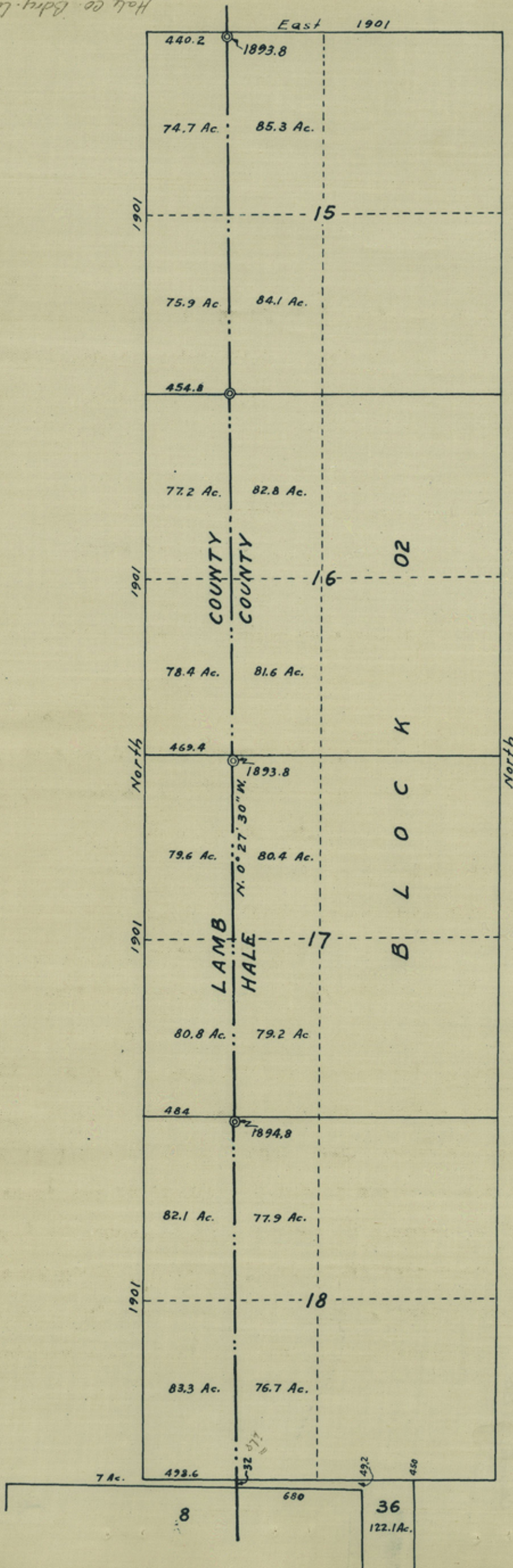


Thence N.0°27'30"W. at 1893.8 varas pass concrete frustrum of cone, 36 inches long, 5 inches in diameter at top, 8 inches at bottom, set in ground, on top of which is a bronze disc, 3 inches in diameter marked HALE LAMB 1930, in all 1901 varas to north line of Section No. 13, Block B, R.M.Thomson, 532.2 varas from its northeast corner;

Thence N.0°27'30"W. at 1893.8 varas pass concrete frustrum of cone, 36 inches long, 5 inches in diameter at top, 8 inches at bottom, set in ground, on top of which is a bronze disc, 3 inches in diameter marked HALE LAMB 1930, in all 1901 varas the north line of Section No. 12, Block B, R.M.Thomson, 579.3 varas from its northeast corner;

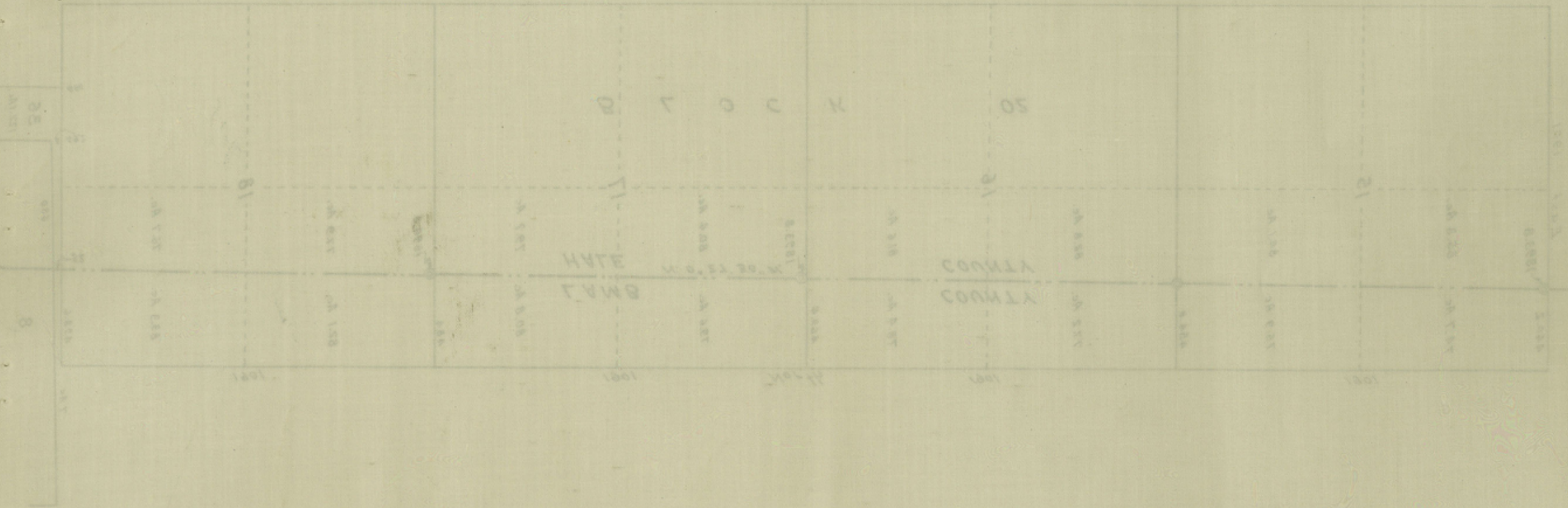
Thence N.0°27'30"W. at 2124.8 varas pass concrete frustrum of cone, 36 inches long, 5 inches in diameter at top, 8 inches at bottom, set in ground, on top of which is a bronze disc, 3 inches in diameter marked HALE LAMB 1930, in all 2132 varas to north line of Section No. 9, Block B, R.M.Thomson, 631.9 varas from its northeast corner;

Thence N.0°27'^{30"}20"W. 1901 varas to north line of Section No. 8, Block B, R.M.Thomson, 680 varas from its northeast corner;





Counter 54130



Thence N.0°27'30"W. 37 varas to the south line of Section No. 18, Block O.2, 498.6 varas from its southwest corner;

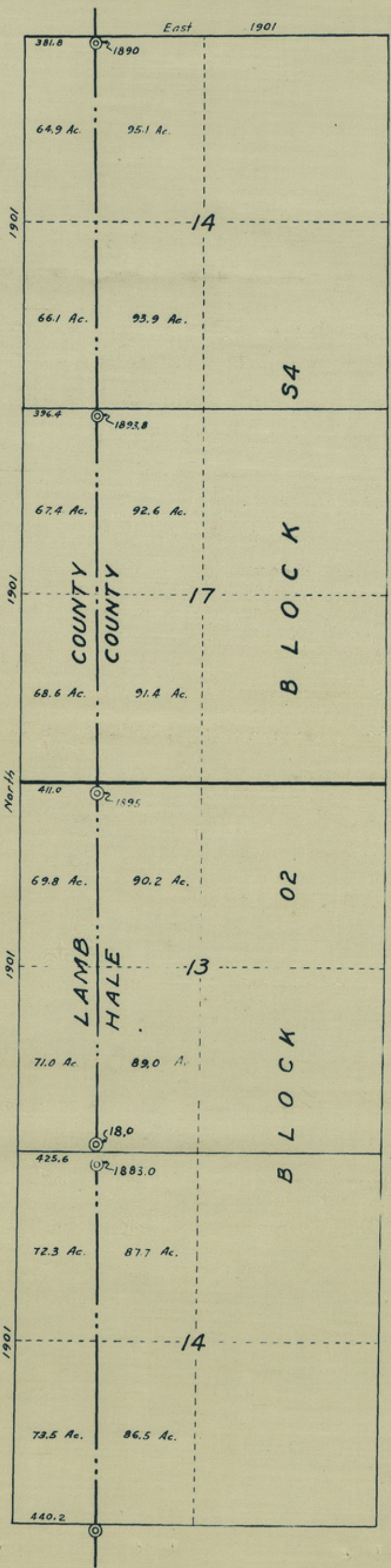
Thence N.0°27'30"W. at 565.8 varas pass concrete frustrum of cone, 36 inches long, 5 inches in diameter at top, 8 inches at bottom, set in ground, on top of which is a bronze disc, 3 inches in diameter marked HALE LAMB 1930, at 1894.8 varas pass concrete frustrum of cone, 36 inches long, 5 inches in diameter at top, 8 inches at bottom, set in ground, on top of which is a bronze disc, 3 inches in diameter marked HALE LAMB 1930, in all 1901 varas to north line of Section No. 18, Block C.2, 484 varas from its northwest corner;

Thence N.0°27'30"W. at 1893.8 varas pass concrete frustrum of cone, 36 inches long, 5 inches in diameter at top, 8 inches at bottom, set in ground, on top of which is a bronze disc, 3 inches in diameter marked HALE LAMB 1930, in all 1901 varas the north line of Section No. 17, Block O.2, 469.4 varas from its northwest corner;

Thence N.0°27'30"W. at 1901 varas concrete frustrum of cone, 36 inches long, 5 inches in diameter at top, 8 inches at bottom, set in ground, on top of which is a bronze disc, 3 inches in diameter marked HALE LAMB 1930, on north line of Section No. 16, Block O.2, 454.8 varas from its northwest corner;

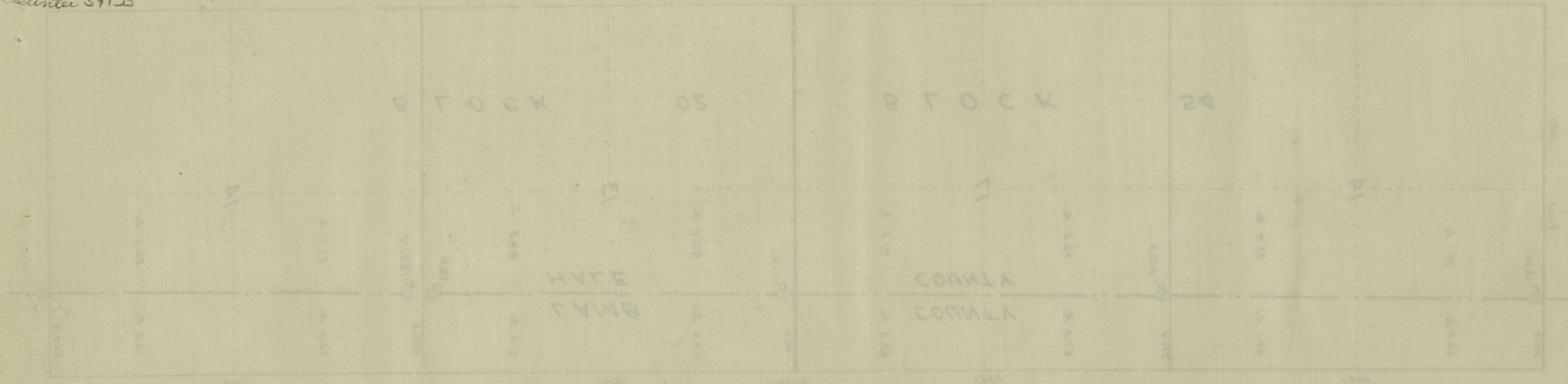
Thence N.0°27'^{30"}20"W. at 1893.8 varas pass concrete frustrum of cone, 36 inches long, 5 inches in diameter at top, 8 inches at bottom, set in ground, on top of which is a bronze disc, 3 inches in diameter marked HALE LAMB 1930, in all 1901 varas to north line of Section No. 15, Block O.2, 440.2 varas from its northwest corner;

Hale Co. Edry. Line # 9





Counter 54133

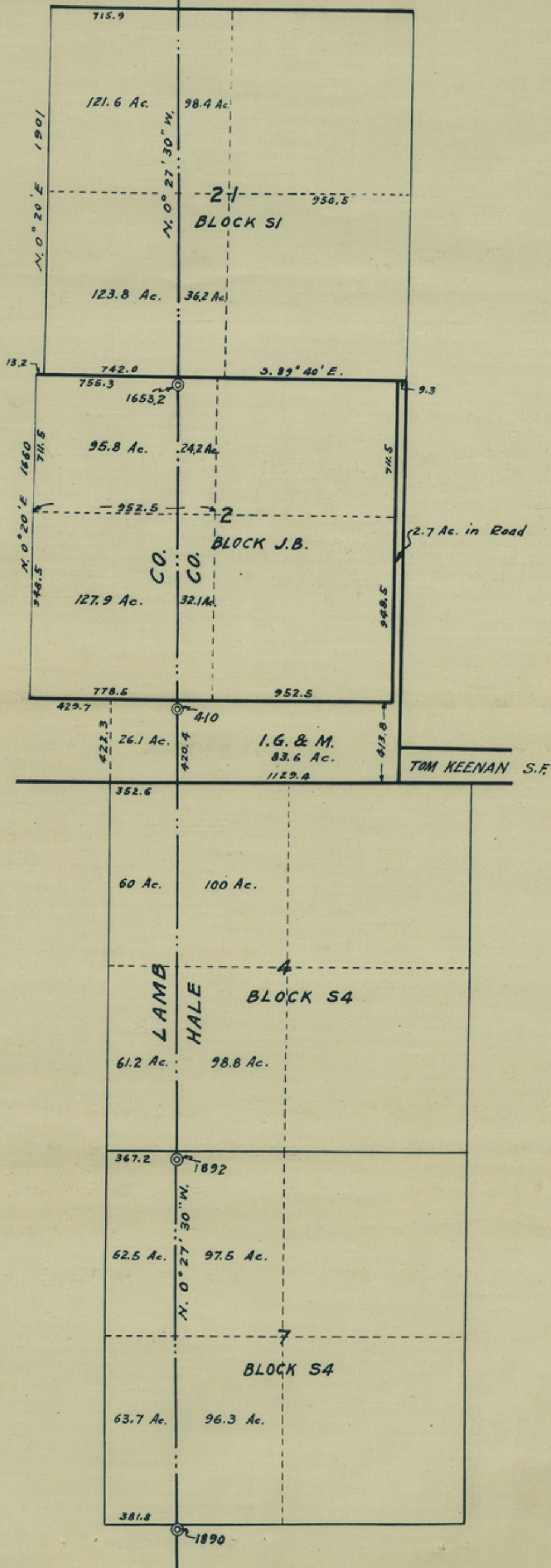


Thence N.0°27'30"W. at 1883 varas pass concrete frustrum of cone, 36 inches long, 5 inches in diameter at top, 8 inches at bottom, set in ground, on top of which is a bronze disc, 3 inches in diameter marked HALE LAMB 1930, in all 1901 varas to north line of Section No. 14, Block O.2, in middle of pavement, 425.6 varas from its northwest corner;

Thence N.0°27'30"W. at 18 varas pass concrete frustrum of cone, 36 inches long, 5 inches in diameter at top, 8 inches at bottom, set in ground, on top of which is a bronze disc, 3 inches in diameter marked HALE LAMB 1930, at 1895 varas pass concrete frustrum of cone, 36 inches long, 5 inches in diameter at top, 8 inches at bottom, set in ground, on top of which is a bronze disc, 3 inches in diameter marked HALE LAMB 1930, in all 1901 varas the north line of Section No. 13, Block O.2, 411 varas from its northwest corner;

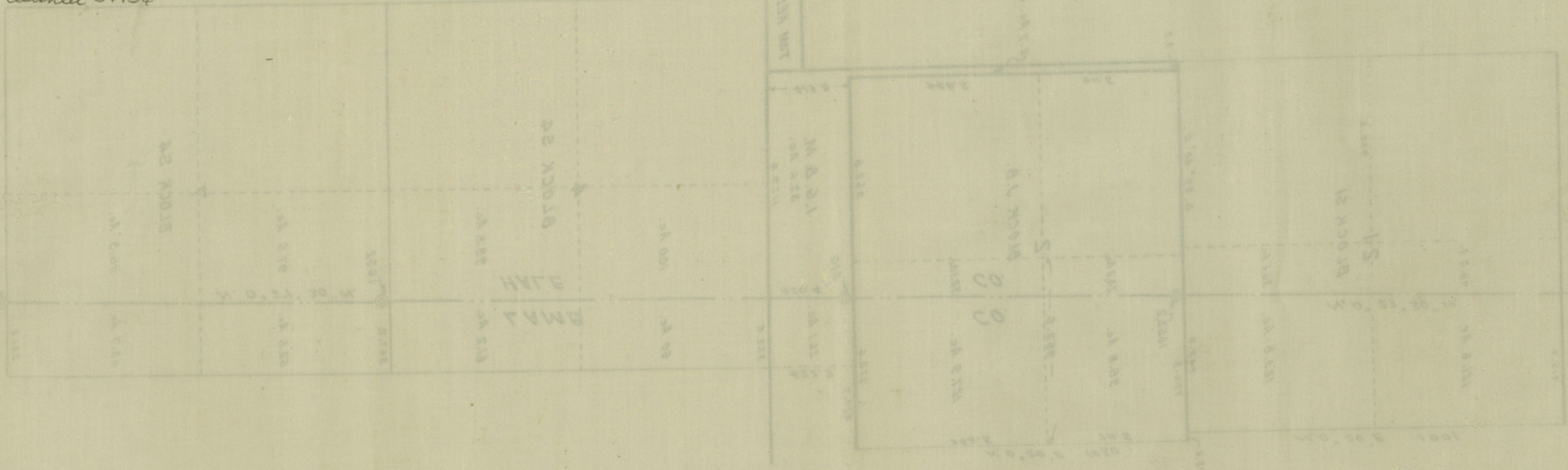
Thence N.0°27'30"W. at 1893.8 varas concrete frustrum of cone, 36 inches long, 5 inches in diameter at top, 8 inches at bottom, set in ground, on top of which is a bronze disc, 3 inches in diameter marked HALE LAMB 1930, in all 1901 varas to north line of Section No. 17, Block S.4, 396.4 varas from its northwest corner;

Thence N.0°27'^{30"}20"W. at 1890 varas pass concrete frustrum of cone, 36 inches long, 5 inches in diameter at top, 8 inches at bottom, set in ground, on top of which is a bronze disc, 3 inches in diameter marked HALE LAMB 1930, in all 1901 varas to north line of Section No. 14, Block S.4, 381.8 varas from its northwest corner;





County 54136



Thence N.0°27'30"W. at 1892 varas pass concrete frustrum of cone, 36 inches long, 5 inches in diameter at top, 8 inches at bottom, set in ground, on top of which is a bronze disc, 3 inches in diameter marked HALE LAMB 1930, in all 1901 varas to north line of Section No. 7, Block S.4, 367.2 varas from its northwest corner;

Thence N.0°27'30"W. 1901 varas the north line of Section No. 4, Block S.4, 352.6 varas from its northwest corner;

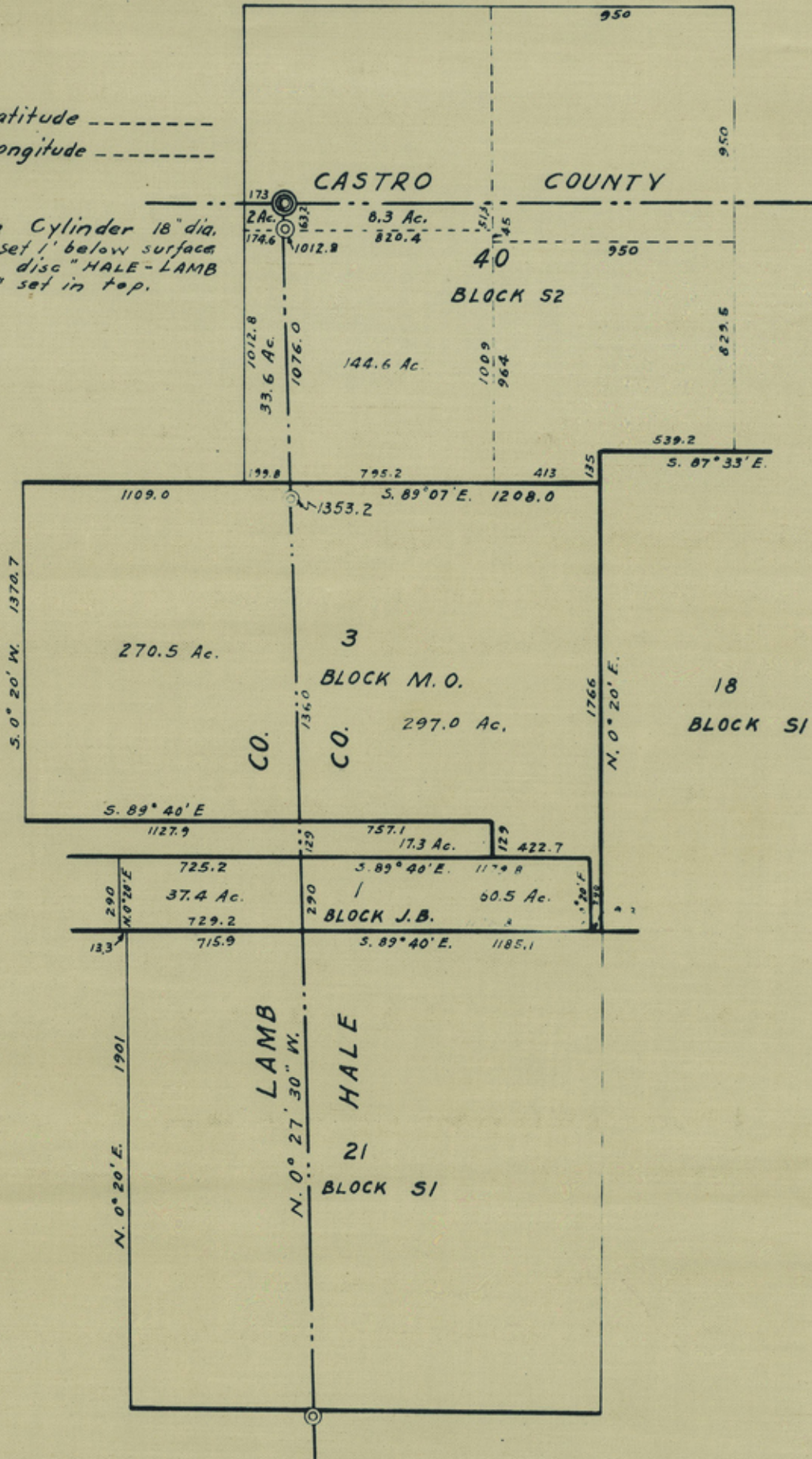
Thence N.0°27'30"W. at 410 varas concrete frustrum of cone, 36 inches long, 5 inches in diameter at top, 8 inches at bottom, set in ground, on top of which is a bronze disc, 3 inches in diameter marked HALE LAMB 1930, in all 420.2 varas to south line of Section No. 2, Block J.B, 778.5 varas from its southwest corner;

Thence N.0°27'^{30"?}20"W. at 1653.2 varas pass concrete frustrum of cone, 36 inches long, 5 inches in diameter at top, 8 inches at bottom, set in ground, on top of which is a bronze disc, 3 inches in diameter marked HALE LAMB 1930, in all 1660 varas to north line of Section No. 2, Block J.B, 755.3 varas from its northwest corner;

Thence N.0°27'30"W. 1901 varas to the north line of Section No. 21, Block S.1, 715.9 varas from its northwest corner;

Latitude -----
Longitude -----

Concrete Cylinder 18" dia.
36" long set 1' below surface
5" bronze disc "HALE-LAMB
CASTRO" set in top.



Thence N.0°27'30"W. at 290 varas to north line of Section No. 1, Block J.B, 725.2 varas from its northwest corner;

Thence N.0°27'30"W. 129 varas the south line of Section No. 3, Block M.O, 1127.9 varas from its southwest corner;

Thence N.0°27'30"W. at 1353.2 varas concrete frustrum of cone, 36 inches long, 5 inches in diameter at top, 8 inches at bottom, set in ground, on top of which is a bronze disc, 3 inches in diameter marked HALE LAMB 1930, in all 1360 varas to south line of Section No. 40, Block S.2, 199.8 varas from its southwest corner;

Thence N.0°27'^{30"}20"W. at 1012.8 varas pass concrete frustrum of cone, 36 inches long, 5 inches in diameter at top, 8 inches at bottom, set in ground, on top of which is a bronze disc, 3 inches in diameter marked HALE LAMB 1930, in all 1076 varas to a concrete cylinder 18 inches in diameter and 36 inches long with bronze disc 5 inches in diameter marked HALE LAMB CASTRO set in top, set 12 inches below surface of ground in center of T.L.Crews' northwest corner of Hale County in place of old limestone marker placed by Crews and square concrete post 6x6x36 inches, marked N W HALE N E LAMB N L CASTRO, placed by W.D.Twichell for the northeast corner of Lamb county and being in Section No. 40, Block S.2, 173 varas from its west line.

Section	Block	Acres in Hale	Acres in Lamb
118	A	6.1	485.7
33	1	19.0	642.6
34	1	31.0	630.6
39	1	43.0	618.6
40	1	41.5	606.3
45	1	37.1	594.1
46	1	32.3	557.3
50	1	29.3	548.0
51	1	26.3	538.8
54	1	16.1	538.2
55	1	8.5	538.6
58	1	5.6	536.6
59	1	125.2	358.2
60		6.4	6.4
17	B	93.0	547.0
16	B	155.4	484.6
13	B	171.3	468.7
12	B	187.0	453.0
9	B	228.7	489.7
8	B	220.8	419.2
36	B	122.1	7.0
18	02	474.6	165.4
17	02	479.5	160.5
16	02	484.4	155.6
15	02	489.3	150.7
14	02	494.3	145.7
13	02	499.2	140.8
17	S4	504.1	135.9
14	S4	509.0	131.0
7	S4	513.9	126.1
4	S4	508.7	131.3
1	G&M	86.4	429.1
2	JB	334.5	225.5
21	S1	394.6	245.4
1	JB	60.5	37.4
1	A5	17.3	
3	MO	297.0	270.5
40	S2	144.6(SW $\frac{1}{4}$)	33.6
40	S2	8.3(NW $\frac{1}{4}$)	2.0

I, W.J. Williams, a licensed land surveyor of Texas, and
Special Surveyor for Hale County and for Lamb County Boundary,
do hereby certify that the foregoing fieldnotes and maps are
true and correct, and that they truly and correctly represent
the Common Line Between Hale and Lamb Counties as it is located
on the ground, and that they truly and correctly show the lines
and corners of the land surveys just as I found them on the ground.

Lee Ponder)
Ben Williams) Chain Carriers.

Witness my hand this 6th of February, 1932.

W. Williams
Special Surveyor for Hale County.
Special Surveyor for Lamb County.

State of Texas)
Hale County)

I have examined the foregoing report and maps
and find them satisfactory and I hereby approve the survey and
report this 10th day of February, 1932.

E. C. Bennett
County Judge, Hale County, Texas.

State of Texas)
Lamb County)

I have examined the foregoing report and maps
and find them satisfactory and I hereby approve the survey and
report this day of , 1932.

Simon D. Hay
County Judge, Lamb County, Texas.

9

~~10~~

Hale Co. Bdry line

Counter 54143



COMMUNICATIONS SECTION

TO THE DIRECTOR
FROM THE CHIEF OF BUREAU
SUBJECT: [Illegible]

COMMUNICATIONS SECTION
[Illegible]

RECEIVED
[Illegible]

RECEIVED
[Illegible]

[Faint, mostly illegible typed text, possibly a memorandum or report.]

Hale Co. Bdry line

Hale - Lamb

Boundary 9

~~11~~
Filed March 16th
1932 —

J. H. Walker, Com-
Clark —

These Field Notes
Appear to be a re-trace of
the line established by L. T.
Crews, Special Surveyor, 1892 —

Examined and approved
March 23rd 1932

J. H. Walker, Com-
Clark

Abstracted in

Vol. 55

4/5/1932

Countee 54144