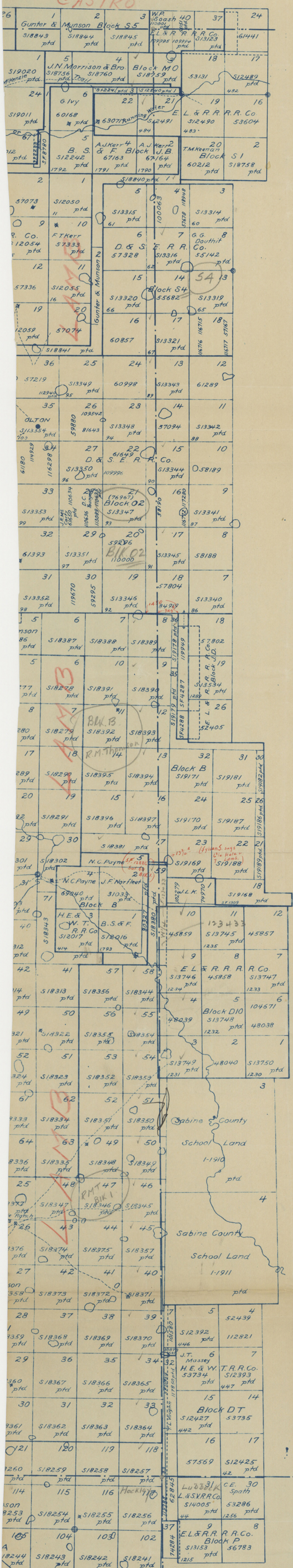


CASTRO



COUNTY

MALE

LUBBOCK COUNTY

○ indicates original corner
 ⊗ " windmill
 --- " county line
 - - - " wagon road

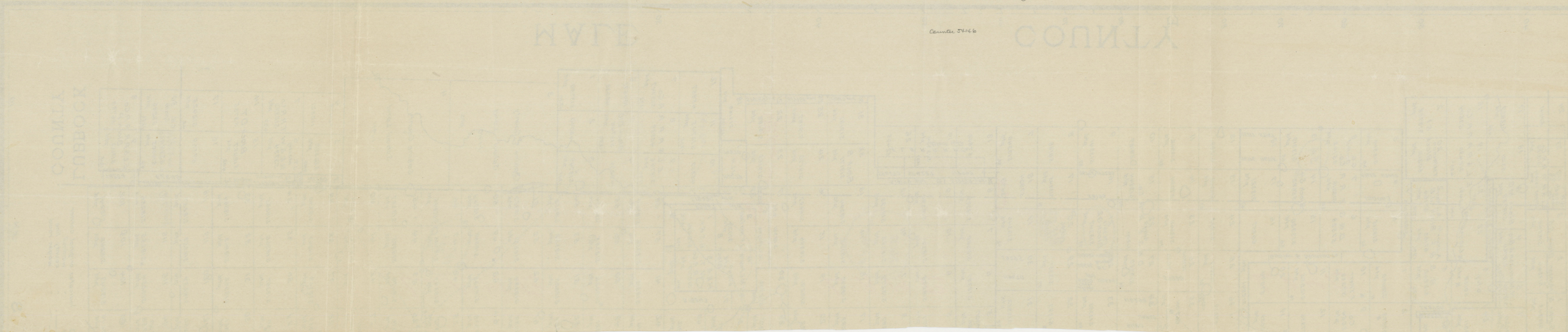
S

10

Counter 5415

10/ ~~11a~~
Hale Co. Bdry line

County 5446



HALE - LAMB

Boundary

(Vol. 55)

Abstracted 4-5-32

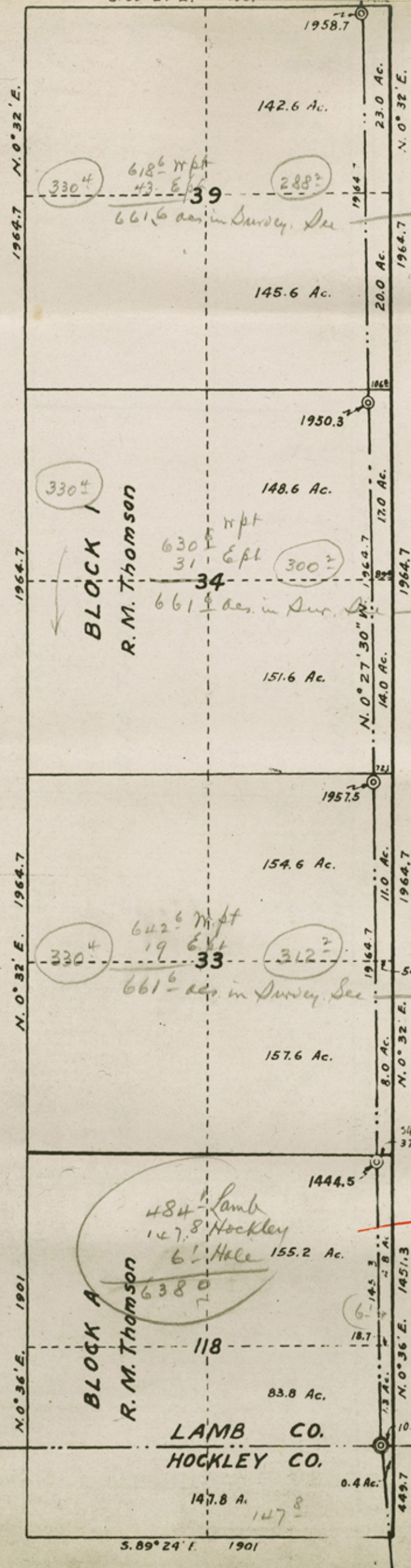


Hale Co. Bdry line

10
⊕

Section	Block	Acres in Hale Co.		Acres in Lamb Co.		File Numbers
		Corrections	Acres in Survey	484 Corrections	Acres in Survey	
118	A	8	6.1	640	485.7	Hockley 148. Fan S. 18257
Page 1	33	1	20	19.0	661 ⁶	642.6 641 ⁶ - Fan. S. 18364
	34	1		31.0 ^{ok}	661 ⁶	630.6 ^{ok} - Fan. S. 18365
	39	1	42	43.0	661 ⁶	618.6 619 ⁶ - Fan. S. 18370
	40	1	55 ³	41.5	661 ⁶	606.3 ^{ok} - Fan. S. 18371
Page 2	45	1	67 ⁵	37.1	661 ⁶	594.1 ^{ok} - Fan. S. 18357
	46	1	70 ⁵	32.3	632	557.3 561 ⁵ - Fan. S. 18345
	50	1	78 ⁷	29.3	632	548.0 553 ³ - Fan. S. 18349
	51	1	93 ³	26.3	632	538.8 ⁷ - Fan. S. 18350
Page 3	54	1	101 ⁷	16.1	637	538.2 535 ³ - Fan. S. 18353
	55	1	98 ^{1/2}	8.5	637	538.6 ^{1/2} - Fan. S. 18354
	58	1	101 ⁹	5.6	638 ⁵	536.6 ^{ok} - Fan. S. 18344
	59	1	119	125.2	477	358.2 ^{ok} - Fan. S. 18380
	60		File shows - 6 ^{3/4}		7	6.4 - SF. 12886 - (13 ^{3/4} acs)
Page 4	17	B		93.0	640 ⁶	547.0 ⁶ - Fan. S. 18381
	16	B		155.4 ^{1/2}	640 ^{1/2}	484.6 485 - Fan. S. 18397
	13	B		171.3 ^{ok}	640 ^{1/2}	468.7 469 ² - Fan. S. 18394
Page 5	12	B		187.0 ^{ok}	640 ^{1/2}	453.0 ^{1/2} - Fan. S. 18393
	9	B		228.7 ^{ok}	718 ²	489.7 ⁶ - Fan. S. 18390
	8	B		220.8 ^{1/2}	640 ^{1/2}	419.2 420 - Fan. S. 18392
	36	B		122.1	129	7.0 ^{ok} - Fan. S. 19178
	5 ^{1/2} 18	02	8 ^{1/2}	237	320	83 - F. 84919
	N ^{1/2} 18	02	N ^{1/2}	474.6	238 - 320	165.4 82 - F. 57804
Page 6	17	02		479.5 ^{ok}	640	160.5 ^{ok} - Fan. S. 13345
	16	02	W ^{1/2}	484.4	164 ⁵ - 320	155.6 ⁵ - F. 58190
	15	02		489.3 ^{1/2}	640	150.7 ^{1/2} - Fan. S. 13344
	14	02		494.3 ^{ok}	640	145.7 ¹⁴⁶ - F. 57094
	13	02		499.2 ^{ok}	640	140.8 ¹⁴¹ - Fan. S. 13343
Page 7	17	S4		504.1 ^{ok}	640	135.9 ¹³⁶ - Fan. S. 13321
	14	S4		509.0 ^{ok}	640	131.0 ^{ok} - F. 55682
	7	S4		513.9	514 - 640	126.1 ^{ok} - Fan. S. 13316
	4	S4	W ^{1/2}	508.7	199 - 320	131.3 ¹²¹ - F. 100063
Page 8	1	G&M		86.4 ^{1/2}	515 ^{1/2}	429.1 ^{ok} - Fan. S. 18840
	2	JB		334.5	336 - 560	225.5 ²²⁴ - F. 67164
	21	S1		394.6 ^{1/2}	640	245.4 ^{1/2} - Fan. S. 12491
	1	JB		60.5	98	37.4 ⁵ - Fan. S. 12240
	1	A5		17.3	24 ²	6 ⁹ - S. J. 8780
Page 9	3	MO		297.0 ^{ok}	567 ^{1/2}	270.5 ^{ok} - Fan. S. 18759
	40	S2		144.6 (SW ^{1/4})	142 - 175	33.6 ³³ - F. 109995 (See sketch 214 in 7.)
	40	S2	149 ² Castro	8.3 (NW ^{1/4})	160	2.0 ^{ok} - F. 110001





Fan S 18370
 (Above F. shows:
 42⁺ Hale
 619⁺ Lamb.)

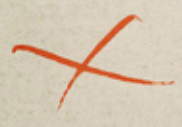
Fan Scrip 18365

Fan S. 18364
 (Above file shows
 20⁺ in Hale Co. &
 641.6 in Lamb Co.
 661⁺)

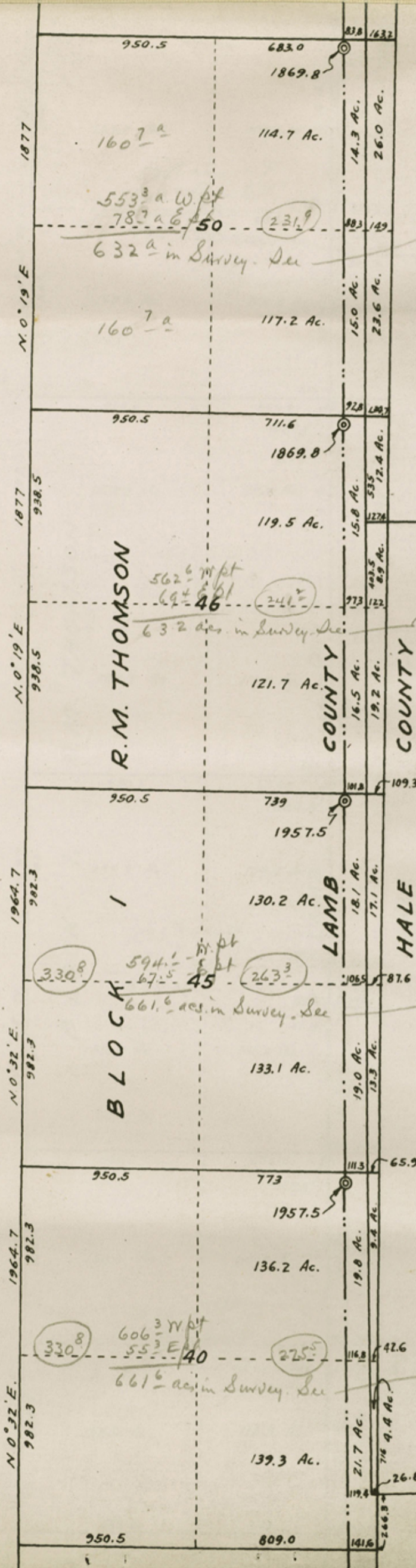
Fan Scrip 18257 shows:
 8⁺ Hale } so have
 148⁺ Hockley } o.k. it.
 484⁺ Lamb.
 640⁺ Scale: 1 inch = 600 varas.

Latitude -----
 Longitude -----

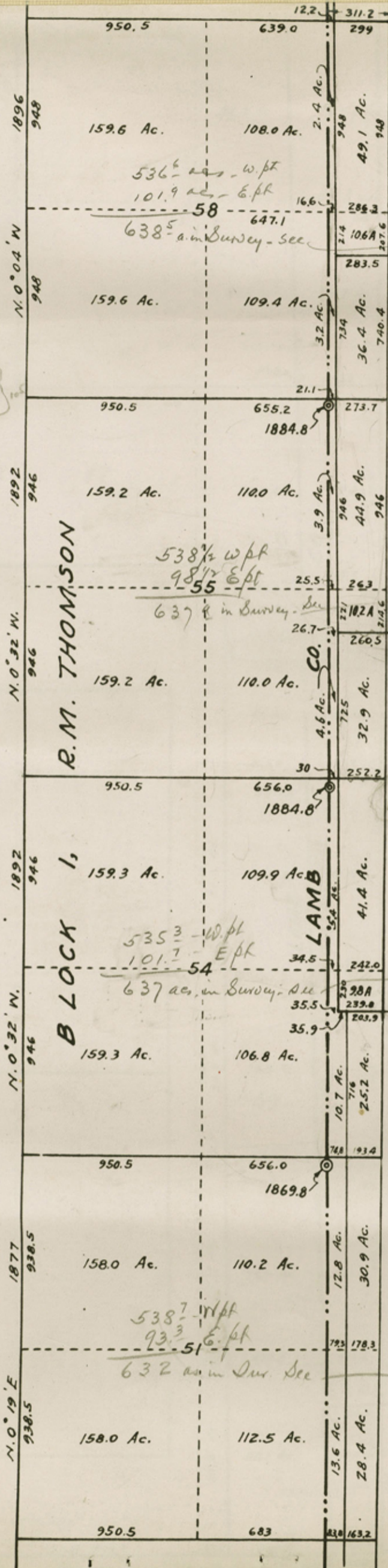
LAMB CO. HALE CO.
 HOCKLEY CO. LUBBOCK CO.



(1)



2



9 - all Hale Co
 Jan. 5, 13746

Jan. 5, 18344

DIO
 4

B LOCK
 CO.
 Jan. 5, 18354

3 all Hale Co.
 Jan. 5, 13749

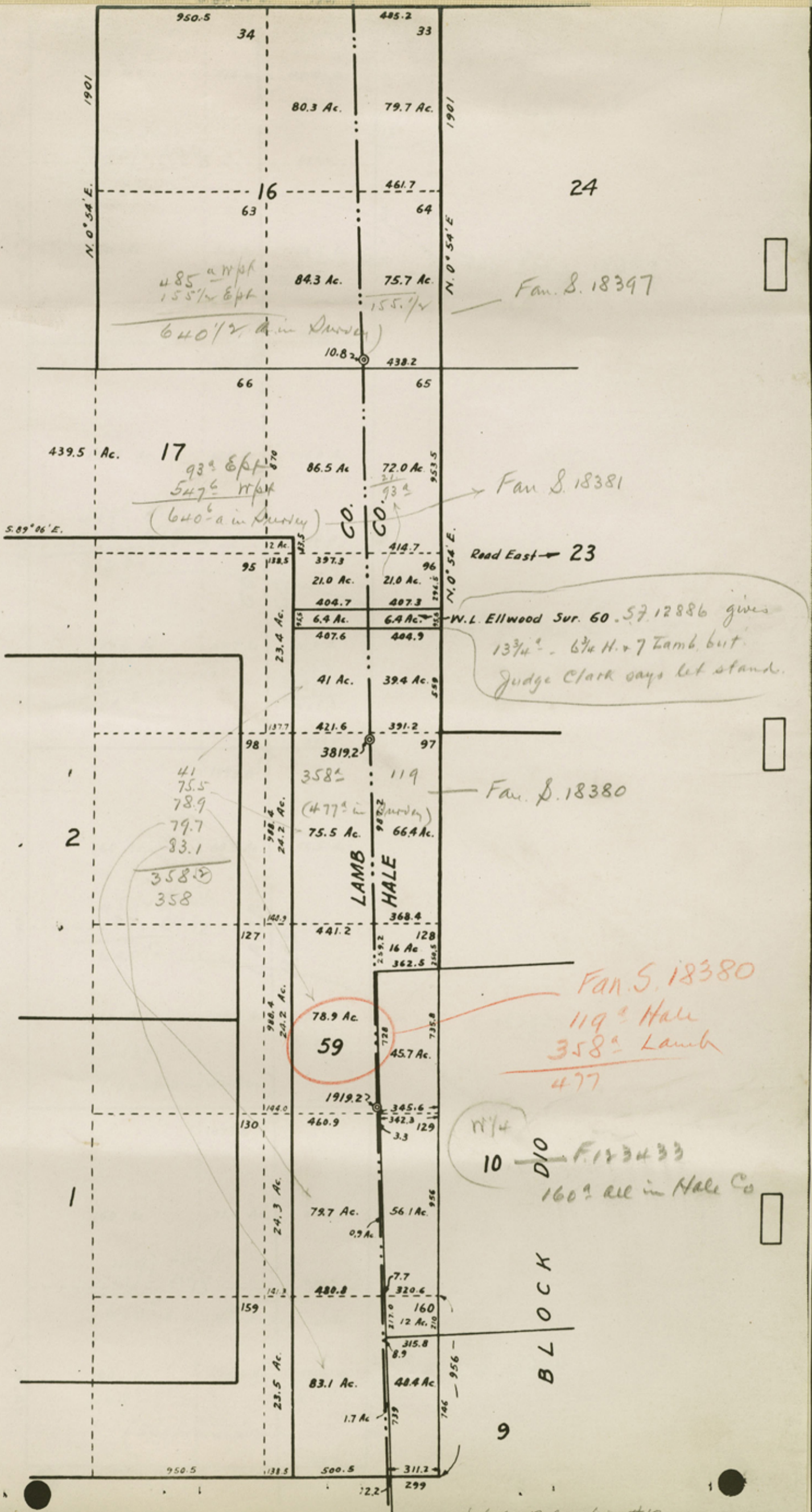
Jan. 5, 18353

LEAGUE 3
 SABINE COUNTY
 SCHOOL LAND

Jan. 8, 18350

140.2
 12.8
 30.9
 153.9

Hale Co. Bdry. line #10



485 a w pt
155 1/2 E pt

640 1/2 a in survey

Fan S. 18397

93° E pt
547° w pt
(640 a in survey)

Fan S. 18381

Road East -> 23

W.L. Ellwood Sur. 60. 57. 12886 gives
13 3/4 - 6 3/4 H. + 7 Lamb, but
Judge Clark says let stand.

Fan S. 18380

Fan S. 18380
119 Haul
358 Lamb
477

10 DIO F. 123433
160? all in Hale Co

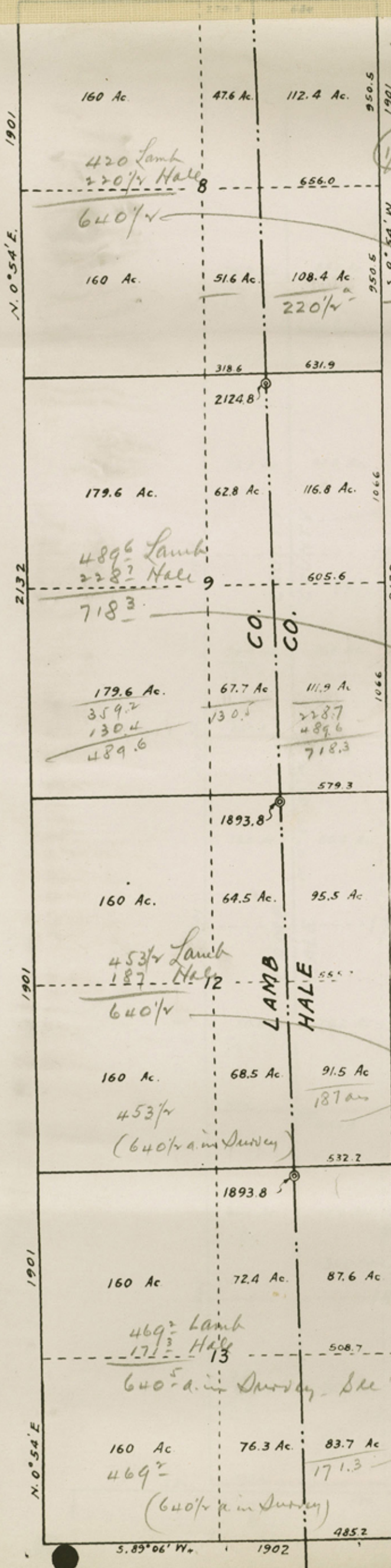
11/4
10

BLOCK

Hale Co. Bdry. line #10

(4)

Counter 54/52



36 - Bk. B. (149²⁰⁰)
 (Not shown here but ok on list.)
 1223 - Fan. S. 19128

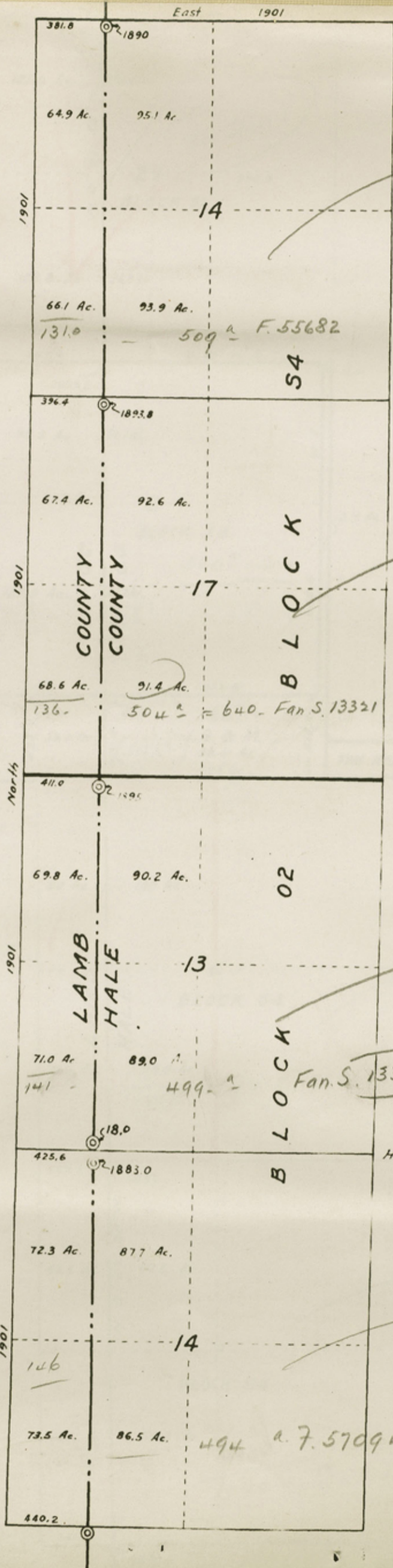
Fan S. 18389

718^{3/4} - Fan. S. 18390

Fan. S. 18393

Fan. S. 18394

5



F. 55682
 509^a Hale
 131^a Lamb
 640

Fan. Sec. 13321
 504^a Hale
 136^a Lamb
 640

Fan. Sec. 13343
 499^a Hale
 141^a Lamb
 640

F. 57094
 494^a Hale
 146^a Lamb
 640

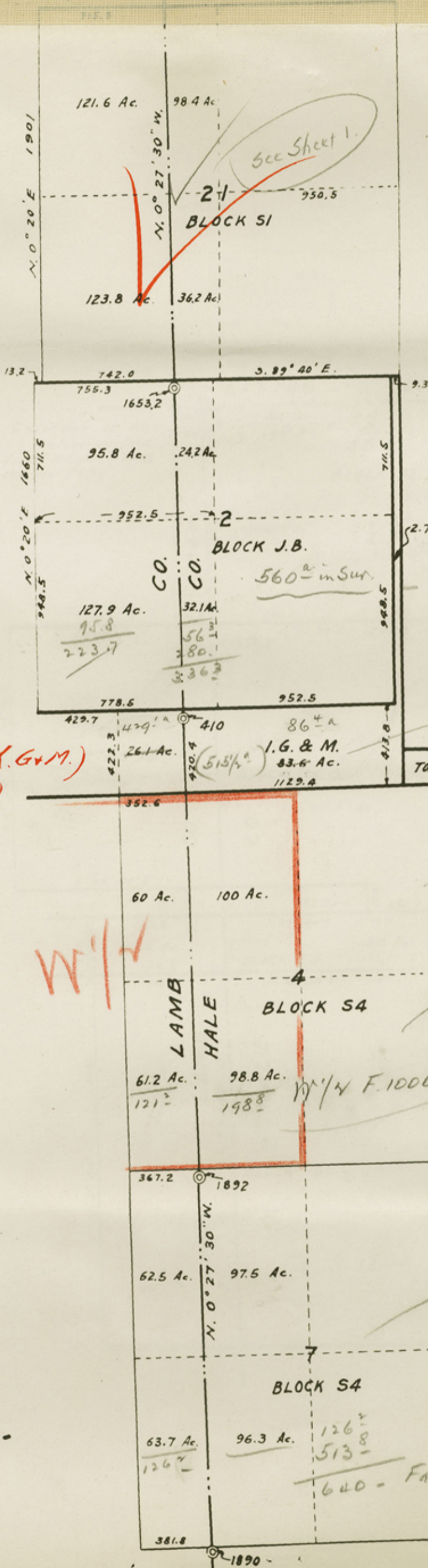
66.1 Ac. 93.9 Ac.
 131.0 509^a F. 55682
 S4

68.6 Ac. 91.4 Ac.
 136. 504^a = 640. Fan. S. 13321

71.0 Ac. 89.0 Ac.
 141 499^a Fan. S. 13343

73.5 Ac. 86.5 Ac. 494^a F. 57094

7



See Sheet 1.

21
BLOCK S1

2
BLOCK J.B.

560^a in Sur.

Fan Ser. 18840

TOM KEENAN S.F.

4
BLOCK S4

7
BLOCK S4

(Sec. 1. BIK. G. & M.)
(515 1/2 a)

W 1/4

336 Hale
224 Lamb
560 -

86⁵ Hale
429 Lamb
515.5

F. 100063

W 1/4 = 121 Hale
199 Lamb
320

Fan Ser. 13316

514^a Hale
126^a Lamb
640

640 - Fan S. 13316

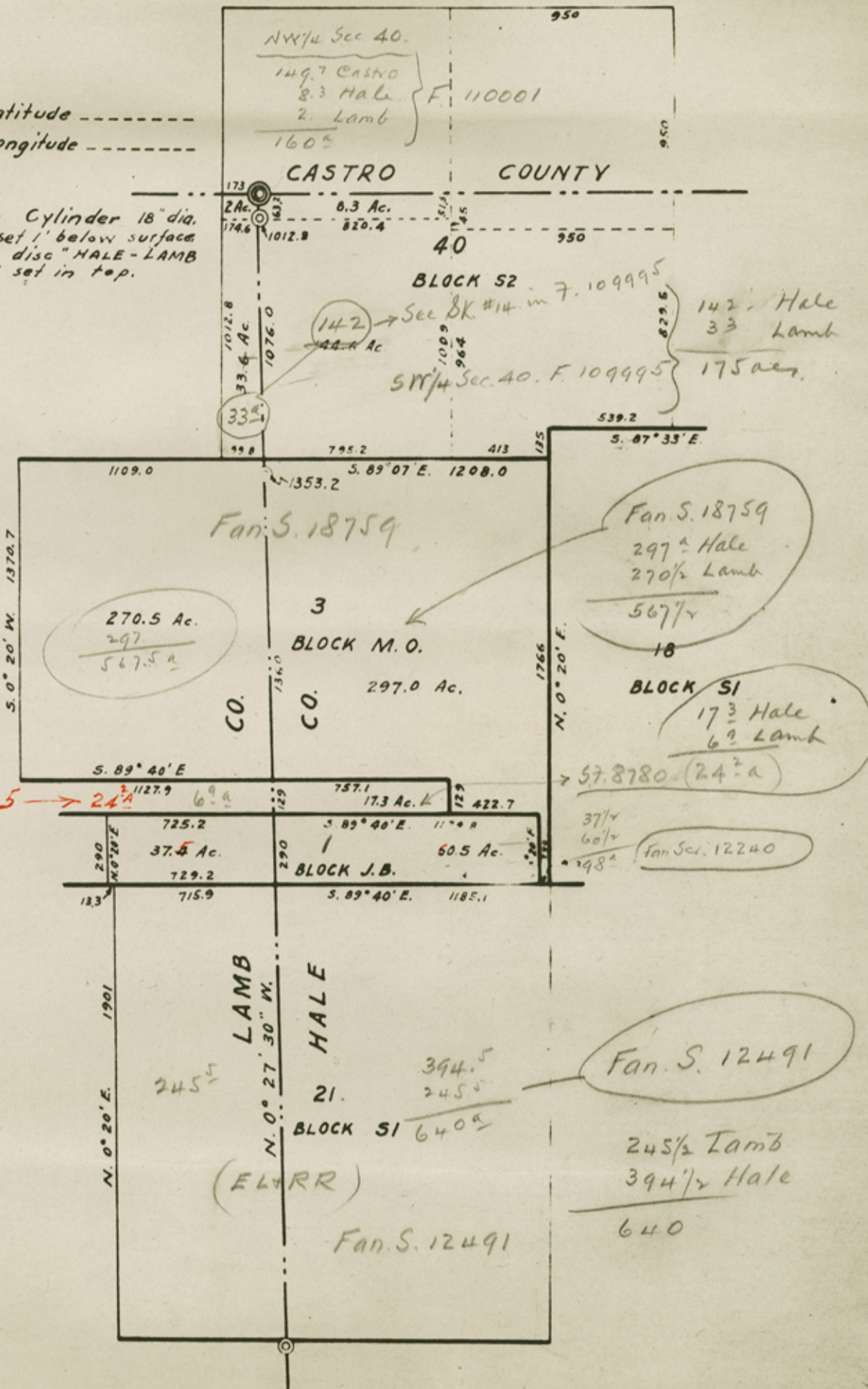
8

Hale Co. Bdry. Line #10

(NW 1/4)
 NW 1/4 - F. 110001
 (SW 1/4)
 109995

Latitude -----
 Longitude -----

Concrete Cylinder 18" dia.
 36" long set 1' below surface
 5" bronze disc "HALE-LAMB
 CASTRO" set in top.



Sec 1. BIK. A5 → 24 1/2
 (17 3/4 Hale
 69 Lamb)

9