

To the Hon. County Court of Hamilton County, Texas.

In obedience to your order issued January 21st 1903. I met the County Surveyor of Comanche County, Texas. And after identifying the S.W. corner of Erath County proceeded to run and mark the line between Hamilton County and Comanche County, as shown by the following field notes and Plat.

W.T.Saxon, Co. Sur.

I, W.T.Saxon County Surveyor of Hamilton County, Certify that the attached Plat and Field Notes are true exhibits of the line between Hamilton and Comanche Counties.

W.T.Saxon, Co.Surveyor

May 13th 1903.

H.C.Tex.

Now on this the 15th day of May 1903. Came on to be heard the report of W.T.Saxon Surveyor appointed by this Court on the 21st day of Jan. 1903. to Survey and mark the lines between the Counties of Comanche and Hamilton. And it appearing to the Court that said Survey was made as the law directs by said W.T.Saxon and R.G.Armstrong, who was the duly and legally authorized Surveyor for Comanche County for said purpose. And that same should be approved. It is therefore the order of this Court that said Survey and this report be and the same are hereby in all things approved and recorded.

J.W.Warren Co.Judge.

Hamilton Co.Texas.

Comanche and Hamilton County Line.

Beginning at the S.W. corner of Erath County, said corner is situated on the J.B.Bonham Survey N 71 W 1183 varas, and N 30 W 960 varas from the S.E. corner of the said Bonham.

1st Mile.

Thence S 30 E at 960 varas across S. line of J.F.Bonham and N. line of Wm. Isbell 1/3 League 2173 vars. from its N.E. Cor. at 1900 8/10 vars a S.M. for 1st Mile.

2nd.Mile. --- Thence S.30 E. at 1189 vars Thompsons Creek, at 1885 vars across W. line of Walden and the E. line of the Isbell which point is S.19 W. 1836 varas from the N.W.Walden corner N.19 E. 165 varas from the S.E. corner of the Wm.Isbell 3rd League, at 1900 8/10 varas a S.M. for the 2nd Mile.



3rd.Mile.----- Thence S.30 E. at 1900 8/10 varas a S.M. for 3rd.Mile.

4th.Mile.----- Thence S. 30 E. 140 varas passed under a sloping L.O. four hacks on the W. side and a large X on N.side the center of which is where County line crosses, at 1900 8/10 varas a S.M. for the 4th Mile.

5th.Mile ---- Thence S.30 E. 790 varas across the E.line of J.B.Walden, and W.line of Bogart 210 varas N.19E.from the S.E.corner of said Walden, at 1170 varas from the S.W.corner of said Bogart, 1900 8/10 varas a S.M. for the 5th mile.

6th.Mile.---- Thence S.30E. at 160 varas cross the E.line of said Bogart, and W.line of Arnels N.19.E.330 varas from the S.E.corner of Bogart, and S.W. corner of Arnels, at 669 varas across the S.line of Arnels, and N.line of A.J.Davis Survey, S.71.E. 380 varas from N.W.corner of said Davis, at 1900 8/10 varas a S.M. for 6th mile marked S.E.C.C. for S.E.corner of Comanche County from which a P.O.S.E.C.C.bears N.26.W.5 1/2 varas said corner is situated on the A.J.Davis survey S.19.W.843 varas and N.71.W.352 varas from the <sup>E</sup> ~~N~~.corner *(See sketch)* of said Davis.

1st.Mile.----- Thence S.60.W.at 1900 8/10 varas a S.M. for 1st Mile.

2nd.Mile---- Thence S.60.W. 100 varas across W.line of A.J.Davis 2320 varas from its N.W.corner 420 varas S.19.W.from the N.E.corner of R.P.Crockett 1560 varas, Rusk Tr'ns Co. at 1900 8/10 varas a S.M. for the 2nd.Mile. Thence S. 60.W. at 141 1/2 varas across S.line of RuskTr'ns Co. No.2 at 340 varas center of spring branch, at 380 varas re-crossed said branch, at 490 varas crossed ~~sp~~ spring branch again, at 600 varas center of bend in spring branch, at 682 varas bluff, at 706 varas crossed Rob't.Wares N.line 410 varas S.71.E.from his N.W.corner, at 1756 1/2 varas the W.line of Ware, at N.19.E.370 varas from his S.W.corner, at 1846 6/10 varas across the N.line of F.B.Gentry S.71.E. 152 varas from its N.W.corner, at 1900 8/10 varas a S.M.for the 3rd.Mile.

4th.Mile----- Thence S.60.W. at 172 varas across W.line of said Gentry and E.line of Fuqua S.19.W.172 vrs.from its N.W.corner and N.E.corner of Fuqua, at 1070 varas Gentrys Creek at 1900 8/10 varas a S.M. for 4th Mile.

5th.Mile.----- Thence S.60.W. at 540 varas E.line of M.Howard and W.line of Fuqua 715 varas N.19.E.from the S.W.corner of said Fuqua and 1820 varas S.19 W.from the N.E.corner of said Howard, at 600 varas center of Leon River at 737 varas cross, at 850 varas re-cross, 964 varas re-cross, 1480 varas recross, 1620 varas re-cross, 1790 varas cross last time, at 1803 varas cross W.line



of Fuqua, at 1900 8/10 varas a S.M. for 5th Mile.

6th.Mile.----- Thence S.60.W. at 1027 cross W.line of Sullivan N.\*\*\* 19.E. 1630 varas from the S.W.corner of said Sullivan and S.E.corner Riley, at 1900 8/10 varas a S.M. for 6th Mile.

7th.Mile.----- Thence S.60.W. at 1278 varas cross N.line of Toops 90varas, S.71.E. from its N.W.corner, at 1425 varas crossed W.line of Toops, at 1900 8/10 varas a S.M.for 7th Mile.

8th.Mile.----- Thence S.60.W. at 400 vrs. cross N.line of Z.Stidham 890 varas S.71.E. from its N.W.corner, at 1752 1/2 varas W. line of Stidham, at 1030 varas S.19.W. from its N.W.corner and 445 varas from the N.E.corner of the \*\*\* M.E.Secret, at 1900 8/10 varas a S.M. for the 8th Mile.

9th.Mile.----- Thence S.60.W. at 245 varas Warrens Creek, at 1367 varas cross the S.line of the S.Maverick 280 varas N.71.W. from its S.E.corner, at 1506 varas cross the E.line the Andy Miller Pre. at 1900 8/10 varas 9th Mile under Don Millers house.

10th.Mile.----- Thence S.60.W. at 490 varas crossed the N.line of Shockley's 495 varas, S.71.E. from its N.W.corner, at 1238 varas crossed W.line of Shockley and E.line of Geo.McKee, 549 varas S.19.W. from N.E.cor. McKie, and N.W.corner Shockley at 1900 8/10 varas a S.M. the 10th.Mile.

11th.Mile.----- Thence S.60.W. 1127 cross the S.line of Boatright and N. line of W.W.Trimble 130 varas N.71.W.from N.W.corner of P.J.Bailey survey and the N.E.corner of W.W.Trimble, at 1732 varas the N.line of L.Essary, at 1900-8/10 varas a S.M. for the 11th.Mile.

12th.Mile.----- Thence S.60.W.1088 varas Warrens Creek, at 1140 varas a rock fence, at 1360 varas a rock fence, 20 varas S.30.E. from Tatum place, at 1400 varas Warrens Creek, at 1447 varas S.line of Wm.Tatum, and N.line of J.W.Bowers 350 varas S.71.E. from the S.W.corner of said Tatum, and 603 varas S.71.E. from J.W.Bowers N.W.corner, at 1900 8/10 varas a S.M. for 12th.Mile.

13th.Mile.----- Thence S.60.W. at 883 varas cross the E.line of C.M.Dixon 190 varas S.19.W. from his N.E.corner, at 1900 8/10 varas a S.M.on said Dixon for 13th Mile.

14th.mile.----- Thence S.60.W.at 1086 varas Dixon's S.line, at 350 varas from his S.W.corner, at 1616 1/2 varas cross E. line of Wm.Swan, at 400 varas S. 19.W. from his N.E.corner, at 1880 varas W. prong of Warrens Creek, at 1900-8/10 varas a S.M. for 14th.mile.



15th.Mile.----- Thence S.60.W. 1720 varas crossed S.line of Swan, at 1110 varas N.71.W. from his S.E.corner, and 998 varas from the N.E.corner of D. Dawson, at 1900  $\frac{8}{10}$  varas a S.M. for 15th.Mile.

16th.Mile.----- Thence S.60.W. at 960 varas middle of road between the E. line of the J.F.A.Lewis, and the W.line of the D.Dawson school land, G.H.&H. No.2. 885 varas S.19.W. D.Dawson's N.W.corner, and 1015 varas from the S.W. corner of D.Dawson. and 1215 varas N.19.E. from the S.E. corner of said Lewis, at 1900  $\frac{8}{10}$  varas a S.M. for 16th.Mile.

17th.Mile.----- Thence S.60.W. at 720 varas crossed the W.line of the Lewis and the E,line of Hoxey, 30 varas N.19.E. from S.W.corner of said Lewis, and S.E.corner of said Hoxey, at 1900  $\frac{8}{10}$  varas a S.M. for 17th.Mile.

18th.Mile.----- Thence S.60.W. at 371 varas crossed the W.line of S.Jackson, 40 varas N.19.E. from its N.W.corner of the E.line of the Dickerson, at 1420 vrs. cross the E.line of E.T.R.R.CO. No.1. at 1900  $\frac{8}{10}$  varas a S.M. for 18th. mile.

19th.Mile.----- Thence S.60.W. at 510 varas crossed the N.line of ~~W.H.~~ K. McKenzie 737 varas from its N.E.corner, at 1900  $\frac{9}{10}$  varas a S.M. for 19th, mile.

20th.Mile.----- Thence S.60.W. at 1900  $\frac{8}{10}$  varas a S.M. for 20th.mile.

21st.Mile.----- Thence S.60.W. 37 varas crossed the W.line of K.McKenzie, and E.line of Amos Pollard, N.19.E. 1061 varas from S.W.corner of K.McKenzie and N.19.E. 2261 varas from the S.E.corner of Amos Pollard, 1900  $\frac{8}{10}$  varas a S.M. for the 21st Mile.

22nd.Mile.----- Thence S.60.W. 270  $\frac{1}{2}$  varas a Stone Marked N.W.H.C.&C. for N.W.corner in Mills County E.line from which a L.O.H. bears S.40.E. 134  $\frac{1}{2}$  varas a P.O.H.S.30.E. 213. varas.

W.T.Saxon, Co.Surveyor,

Hamilton Co.Tex.

Filed for Record May 15th 1903. and Recorded May, 29th. 1903.

Geo.W.Oliver.

C.C.C.H.C.T.



The State of Texas.

County of Hamilton. }

I, Geo.W.Oliver Clerk of the County Court, in and for Hamilton County, do hereby certify that the above and foregoing is a true and correct copy of the Field Notes and Report of W.T.Saxon Surveyor of the Hamilton and Comanche County Line, and the attached # Plat is also a true copy of the original as the same appears of Record in the Civil Minutes of said Court, in Volume "1" Pages 282to 286.

Given under my hand and Seal of Office, this May 30th. A.D.1903.

*Geo. W. Oliver*

Clerk of the County Court.

Hamilton County, Texas.



Hamilton Co Bdry ~~4~~ (3) Line

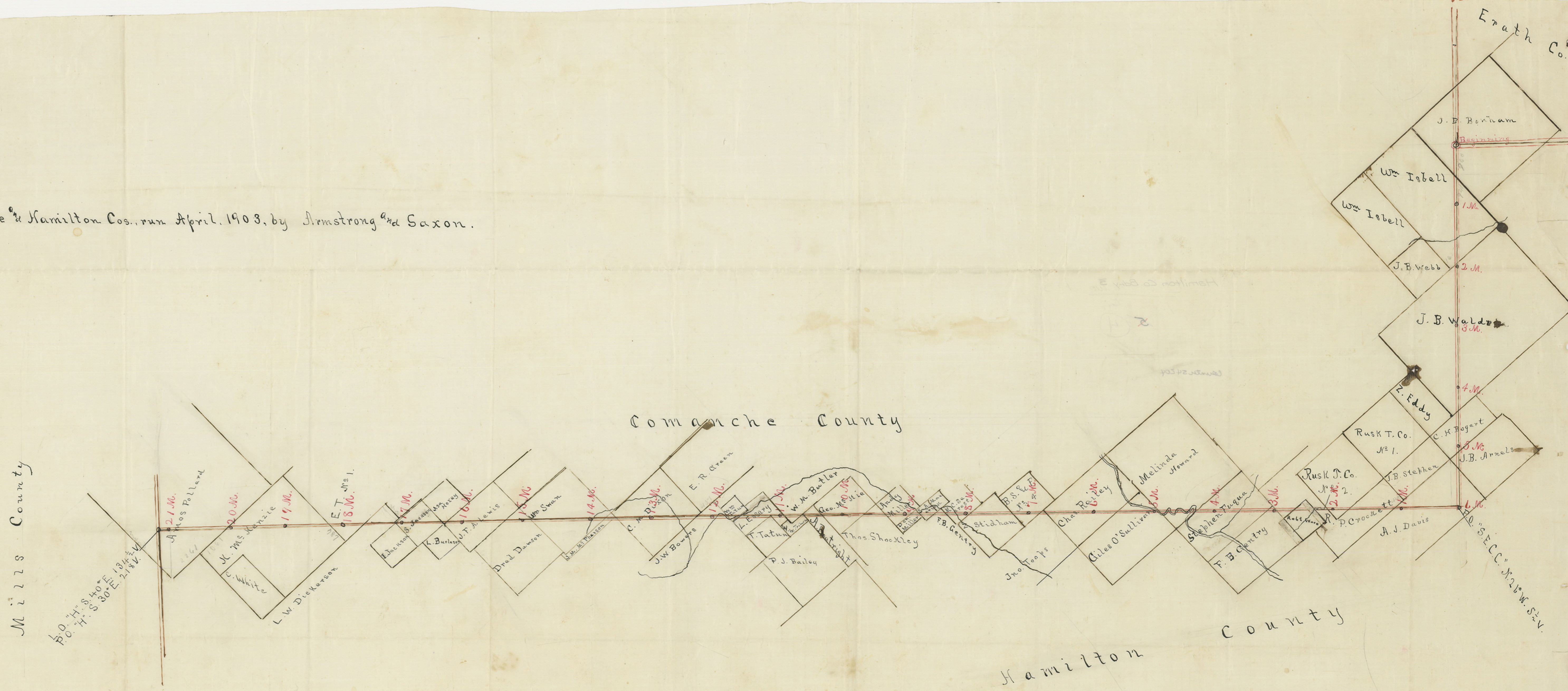
Boundary Line  
Comanche & Hamilton Cos.

Approved and filed  
July 11, 1903.

John J. Terrell  
Commissioner

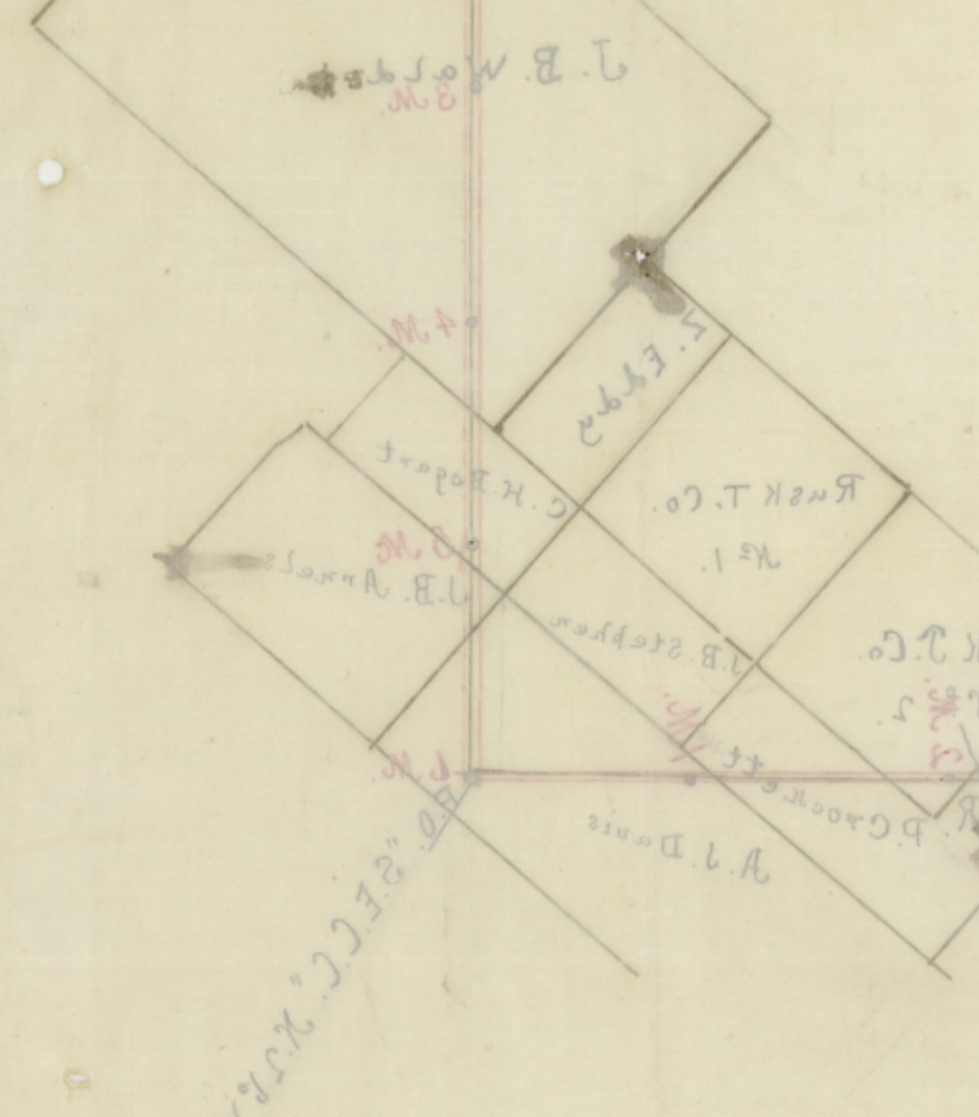
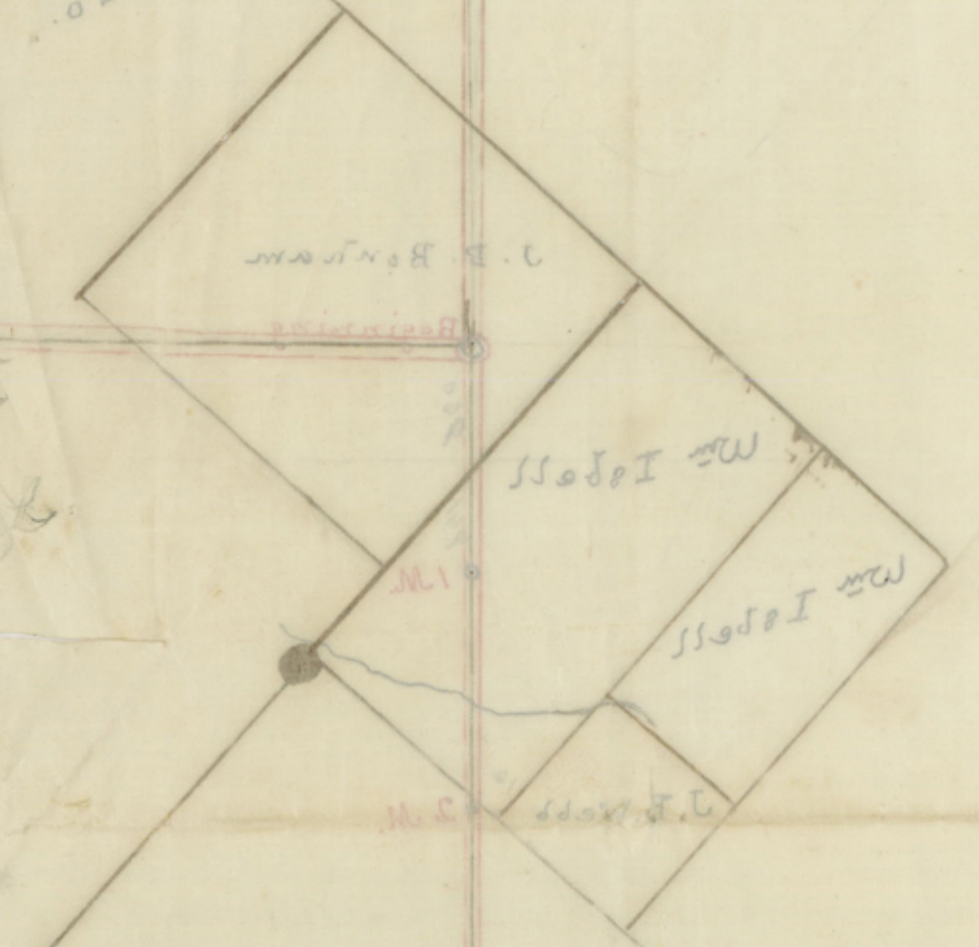


Boundary Line between Comanche & Hamilton Cos., run April, 1903, by Armstrong and Saxon.



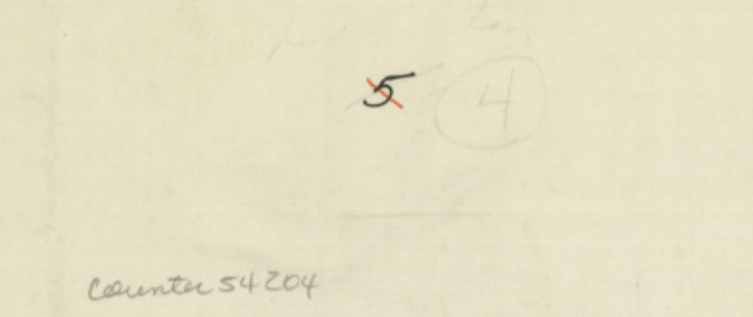


Frank Co.

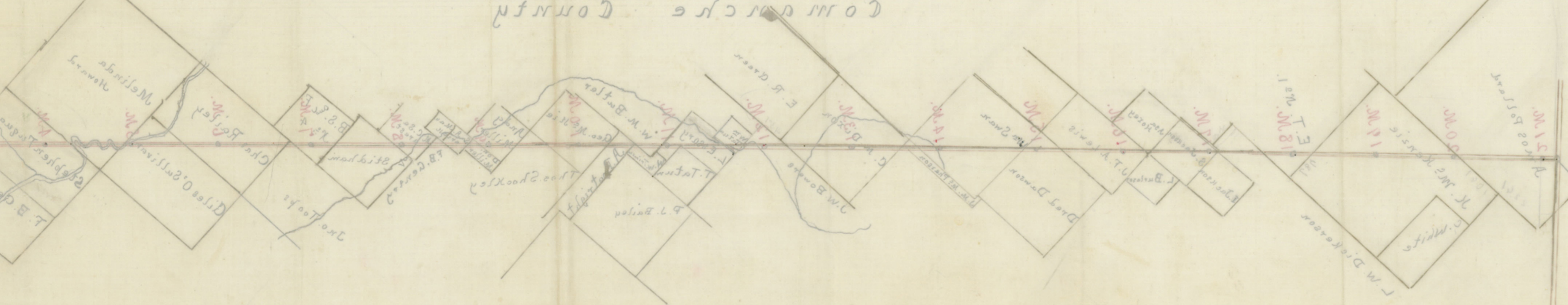


Frank Co.

Hamilton Co Bdry



Counters



Hamilton Co

Hamilton Co

Boundary line between Comanche & Hamilton Co. run April 1903 by Armstrong & Co.

Frank Co

Frank Co

Frank Co

Frank Co

Frank Co

Frank Co

Frank Co

Frank Co

Frank Co