

COUNTY

POLLARD 1-1226

1

3870 1/2

183 1/2

583

25 1/2 Hamilton
20
307 1/2 Mills

30 1/2

35 1/2

OK Hamilton

JACOB BECKER
1-930

1-901
S.M. EDWARDS

1343

S 19 1/4 2927

1-1153
THOMAS BOWMAN

1390

272

HAMILTON Co.

S 7 1/2 E 3205.5

N 19 E 2927
N 19 E 2974

1-1242
W.S. TURBERVILLE

S 7 1/2 E 2802

MILLS Co.

165

1311

T & S L R R Co.

T & S L R R Co.

T & S L R R Co.

E. R. Jacobs
F 111635

R. S. Keeton
F 132885

91

70

103

57

130

110

80

80

106

78

52

47

3

3

3

3

3

519 1/4 2974

HRS LOWRY (OBB)

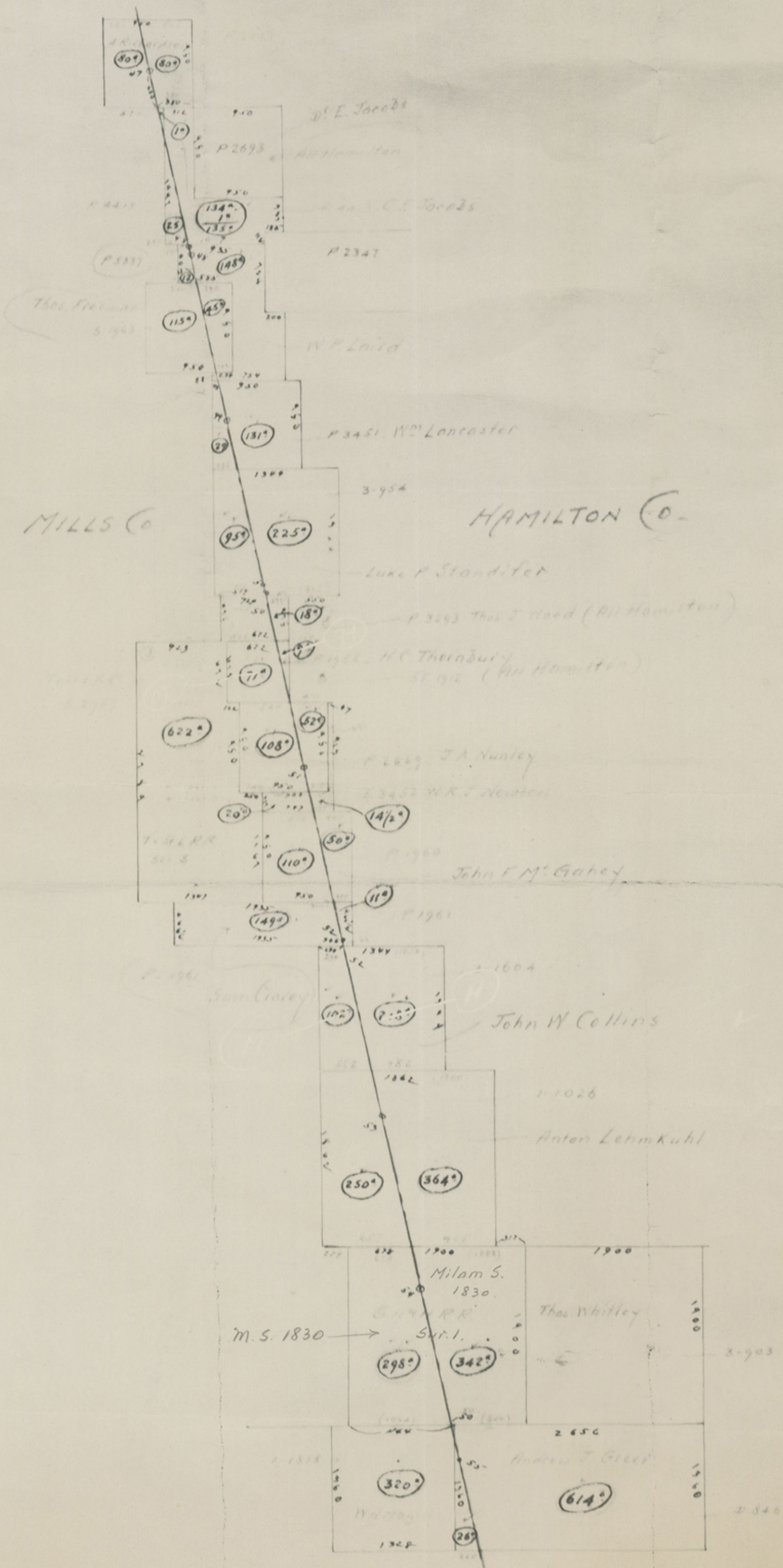
T & S L R R Co.

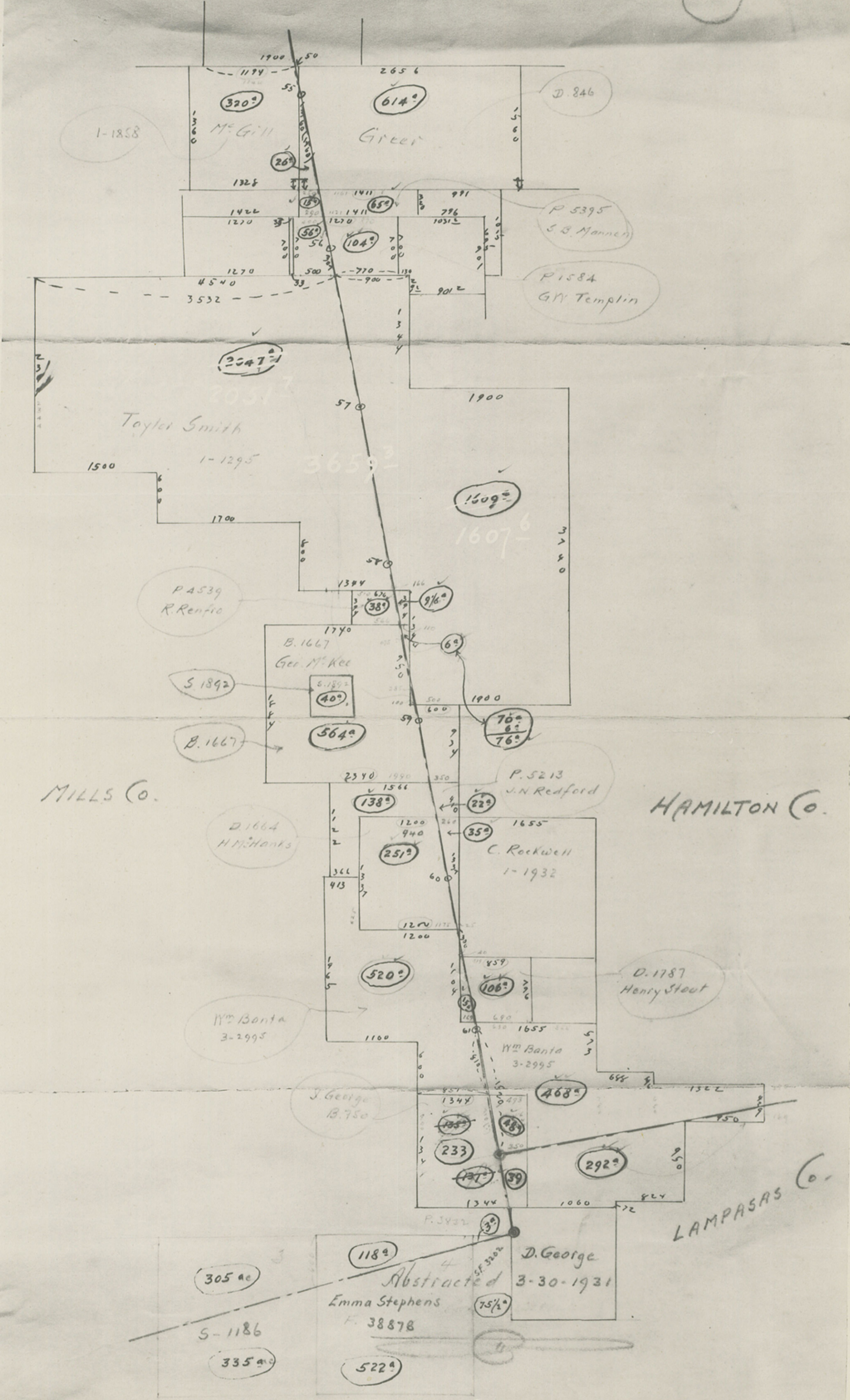
M. M. Smith
F 71828

T & S L R R Co.
(461 A)
J. S. DENTON
F 47460

A. Richardson

P. 2277





MILLS Co.

HAMILTON Co.

LAMPASAS Co.

1-1858

Taylor Smith

P. 4539
R. Renfro

B. 1667
Geo. McKee

P. 5213
J.N. Redford

C. Rockwell
1-1932

D. 1787
Henry Stout

Wm Banta
3-2995

J. George
B. 750

Wm Banta
3-2995

Abstracted
Emma Stephens
F. 38878

D. George
3-30-1931

305 ac

S-1186

335 ac

522 ac

4

Hamilton Co. Bdry. line

Hamilton - Mills Boundary Line.

1

57 1931

Enlarged when
photostated

MILLS

ETR.R.C.
(Sur. 7)

M.S. 1388

COMANCHE

Amos Pollard

1-1226

2670°

1352°

583°

HAMILTON

Jacob Becker

