

TEXAS COUNTY OKLAHOMA

NE COR. HANSFORD CO. N.W. COR. OCHILTREE CO.

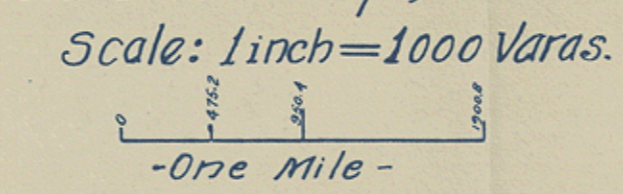


NOTE:

All county line mile posts are marked by an iron pipe set in earth mound, except miles 28 & 6, which are iron pipes in mounds of rock.

PLAT OF A SURVEY of the WESTERN BOUNDARY OF OCHILTREE CO. EASTERN BOUNDARY OF HANSFORD CO.

SURVEYED by RUPERT C. ALLEN, Licensed Land Surveyor, Ochiltree County. T.O. JAMES, Licensed Land Surveyor, Hansford County.

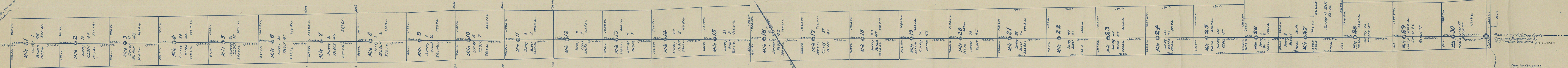
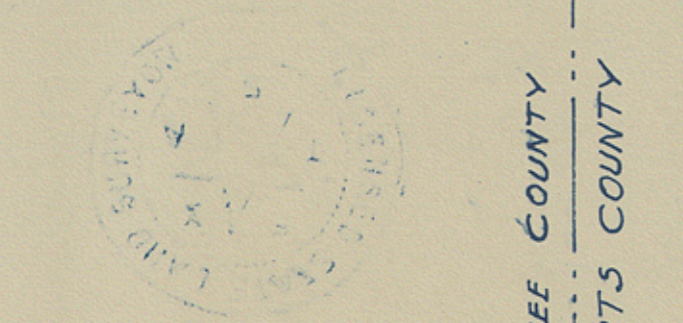


True Course of County Line 30° 04' 18" W.

SURVEYOR'S CERTIFICATE

We, Rupert C. Allen & T. O. James, Licensed Land Surveyors, do hereby certify that the PLAT hereon, is true and correct and of a survey made by us on the ground, pursuant to orders of the County Courts of Ochiltree & Hansford Counties, Texas, authorizing the survey and marking of the common boundary between said Counties.

Signatures of Rupert C. Allen and T. O. James, Licensed Land Surveyors.



OCHILTREE COUNTY ROBERTS COUNTY

HANSFORD CO. HUTCHINSON CO.

From S.E. Cor. Ochiltree County Concrete Monument set by W.O. Mitchell, brs. South 10.3 Varas 6

From N.W. Cor. Sec. 55 Old Cor. 1924 by Thomas Br. E. 286.00 & South 7.1.

Hampford Co. Pa. L. 1823

F/R
Plat
Report
Hampford
Oakhill

Count 54296

Count 54296
County Clerk

53/ Hancock Co Entry Line

Copies -

Ochutree - Hancock
- County Boundary -

Count 54278