







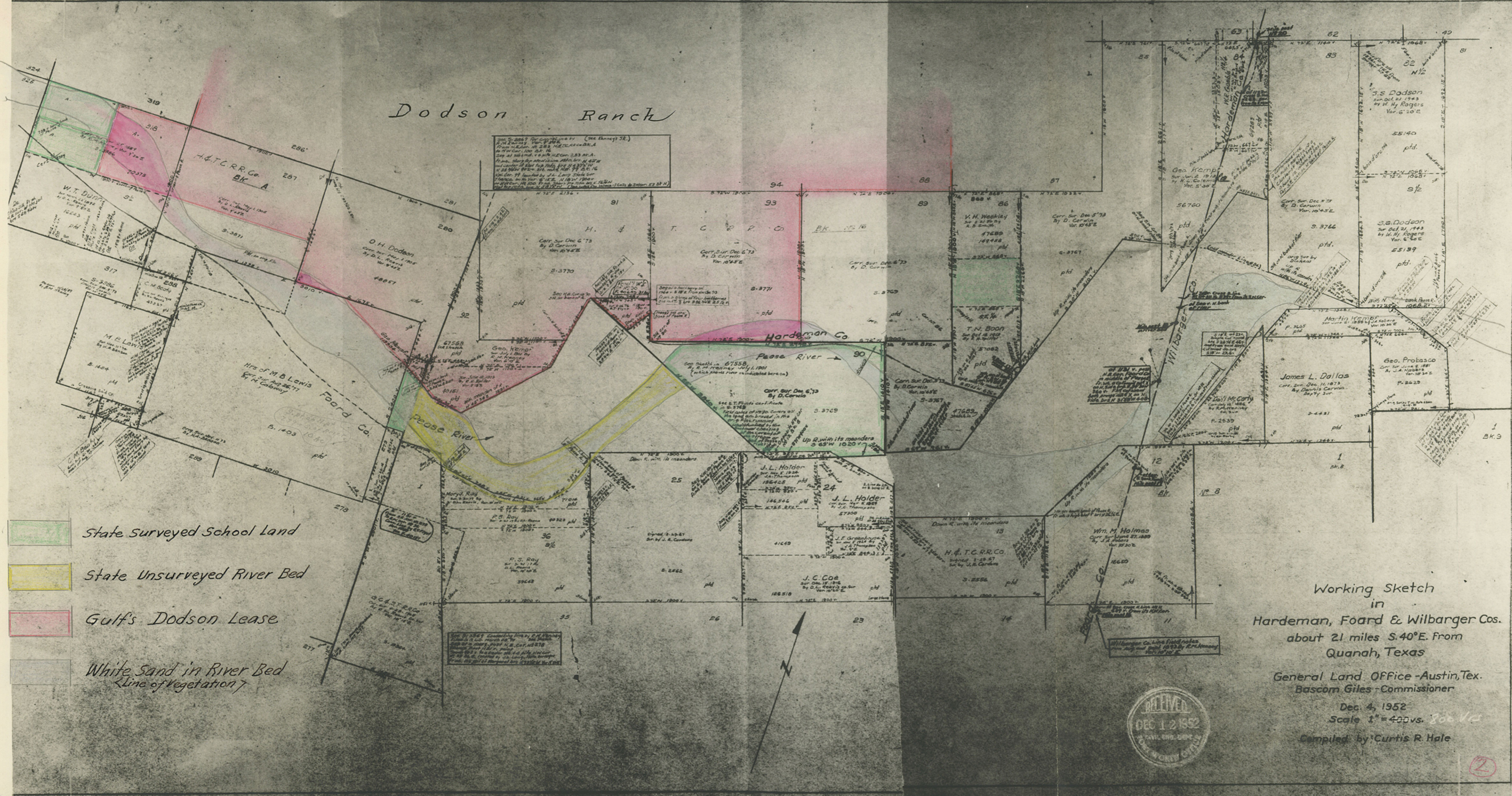
COUNTY

Who Owns?

HARDEMAN COUNTY  
 Hardeman Co. Bdry. line (Shot from L.O. Map)



# Dodson Ranch



- State Surveyed School Land
- State Unserved River Bed
- Gulf's Dodson Lease
- White Sand in River Bed  
(Line of Vegetation)

Working Sketch  
in  
Hardeman, Foard & Wilbarger Cos.  
about 21 miles S.40°E. from  
Quanah, Texas

General Land Office - Austin, Tex.  
Bascom Giles - Commissioner

Dec. 4, 1952  
Scale 1" = 400 vs. 800' vs  
Compiled by Curtis R. Hale



APR. 2, 1953

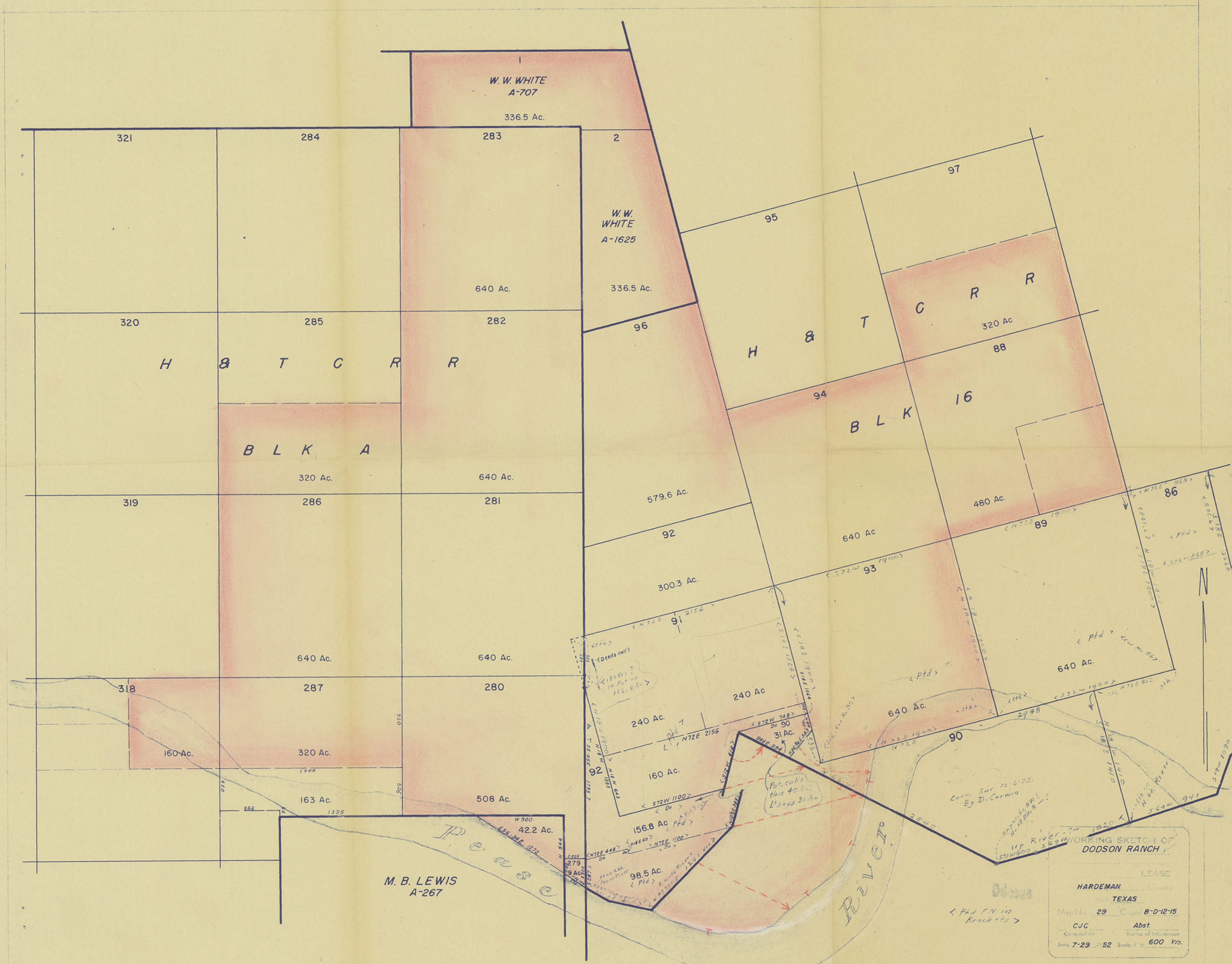
*Hardeman Co. Boundary line (4)*

**HARDEMAN, FOARD & WILBARGER COs.**

SURVEYS ALONG PEASE RIVER

6 PLATS

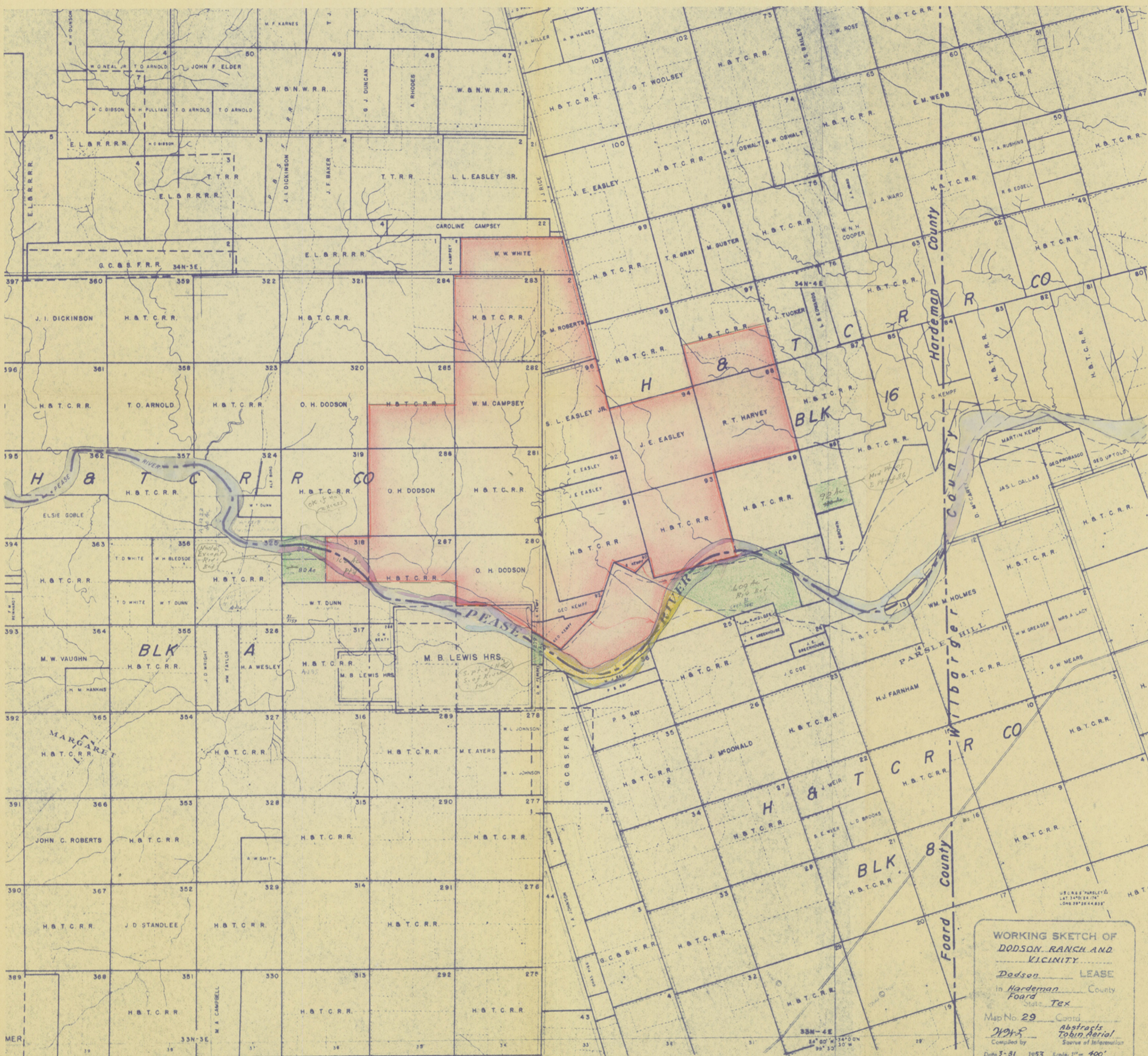
LOANED BY GULF OIL CORP. FORT WORTH OFFICE  
FOR OFFICE USE ONLY & TO BE RETURNED TO  
GULF WHEN CALLED FOR.



WORKING SKETCH OF  
DODSON RANCH

LEASE  
HARDEMAN  
TEXAS  
Map No. 29 Cont. B-D-12-15  
CJC Abst.  
Compiled by Source of Information  
Date 7-29-52 Scale 1" = 600 Yrs.

Hardeman Co. Bdry line ④



WORKING SKETCH OF  
 DODSON RANCH AND  
 VICINITY  
 Dodson LEASE  
 in Hardeman County  
 Foard State, Tex  
 Map No. 29 Cont'd  
 Abstracts  
 Tobin Aerial  
 Compiled by Source of Information  
 Date 3-31-1953 Scale: 1" = 400'

Gulf's Dodson Lease
  State Surveyed Schl. Ld.
  Unsurveyed River Bed

County 54399

Hardeman Co Bdry line (4) (3)