

Corrected Field Notes of  
The North Boundary Line  
of Hartley Co Texas

The State of Texas In matter of corrected  
County of Hartley } field notes of North  
Boundary line of Hartley County  
Be it remembered that Whereas the location  
of the North boundary line of Hartley County was  
incomplete in this, said location did not give  
the distance of the several corners of the different surveys  
along the line of said North Boundary, and whereas  
Mr. E. F. Batts the surveyor who established said line for  
Hartley County was by an order of this Court requir-  
ed to make corrected field notes & map of said line  
showing the distance between the corners of the several  
surveys along said line and it appearing to the  
Court that said field notes & map has been  
so corrected & has been filed by said surveyor  
and that the same has been duly recorded by the  
County clerk It is therefore ordered by the  
Court that the corrected field notes & map  
of said North boundary line as returned &  
corrected by Mr. E. F. Batts surveyor, and  
recorded by the County Clerk are hereby ac-  
cepted and approved & adopted. The  
said field notes and maps  
are as follows:

Corrected Field Notes of the  
North Boundary Line of Hartley  
County Texas being also the  
South boundary line of Dallam  
County

Beginning at a large rock set in  
ground in the line of Bound-  
ary between the State of Texas  
and New Mexico as surveyed  
in the year 1859

Said Stone is marked on  
the North side  $\square^m$  and on  
the South side  $H\gamma$  and is  
30 miles South of Cedar Post  
and flat Rock set in ground  
Said Post is marked on West  
side N M L 103. 1859. and on  
the East side X T. L. A. B O B O.

A. D. 1859. The North West corner  
of the Pan Handle of Texas  
from said described beginning  
point the South West Corner of Capital  
Survey No 123 bears South 1324

Thence East at 101 Varas a Stone set in  
ground marked 0

Thence East 1900.8 Var mound 1 cut in soil

Thence East at 1118 Varas a point whence  
the South East Corner of Capital



1 Survey No 123 a mound 4 feet bears south  
2 132 1324 Varas and the North West  
3 Corner of Capitol League  
4 No 135 bears North 720 Varas  
5 At 1900.8 Varas a mound 2  
6 Thence East cut in the sod

7  
8 Thence East at 1900.8 Varas a mound  
9 3 cut in sod

10  
11 Thence East at 1900.8 Varas a mound  
12 4 cut in sod

13  
14 Thence East at 1728 Varas a point  
15 whence the North West Corner  
16 of Capitol League No 134  
17 bears North 730 Varas  
18 At 1900.8 Varas a mound 5  
19 cut in sod

20  
21 Thence East at 1900.8 Varas a mound  
22 with 6 cut in sod

23  
24 Thence East at 1639 Varas a point  
25 whence the North West Corner of  
26 Capitol League No 133 bears  
27 North 719 Varas same being a  
28 mound and 4 feet  
29 At 1900.8 Varas a mound 7  
30 Thence East cut in sod

31  
32 Thence East at 1900.8 Varas mound



8 cut in sod

Thence East 1900.8 Saras mound 9  
cut in sod

Thence East at 94.9 Saras a point whence  
the North West Corner of Capitol  
League No 137 bears North 718 1/2  
At 1900.8 Saras Mound 10  
cut in sod

Thence East 1900.8 Saras mound. 11 cut  
in sod

Thence East 1900.8 Saras mound. 12  
cut in sod

Thence East at 259 Saras a point  
whence the North West Corner  
of Capitol League No 131  
bears North 717 Saras.  
at 1900.8 Saras mound. 13  
cut in sod

Thence East 1900.8 Saras Mound 14  
cut in sod

Thence East 146.9 Saras a point whence  
the North West Corner of Capitol  
League No 130 a mound and  
4 pits bears North 716 Saras  
At 190.8 Saras Mound 15 cut in sod



#4  
counter 54464

Hartley Co. Bdry. Line #2A

- 1 Thence East 1900.8 Varas Mound 16 cut  
2 in sod
- 3  
4 Thence East 1900.8 Varas Mound 17 cut  
5 in sod
- 6  
7 Thence East at 778 Varas a point whence  
8 the North East Corner of Capitol  
9 League No 130 bears North  
10 715 Varas same being a Mound &  
11 4 pits and the North West  
12 Corner of Section No 41 in Block  
13 2 Brooks & Burleson bears  
14 North 537 Varas  
15 at 1900.8 Varas Mound 18 cut  
16 in sod
- 17  
18 Thence East at 780 Varas a point whence the  
19 North West Corner of ~~sec~~ 44 in said  
20 Block 2 bears North 535 Varas  
21 at 1900.8 Varas Mound 19 cut  
22 in sod
- 23  
24 Thence East at 780<sup>Varas</sup> a point whence the North  
25 West Corner of Section 43 in said  
26 Block 2 bears North 534 Varas  
27 at 1900.8 Varas Mound 20 cut  
28 in sod
- 29  
30 Thence East at 780 Varas a point whence  
31 the North West corner of Section 44  
32 in said Block 2 bears North 532 Varas



# 5  
counter 54465

Hartley Co. Bdry. Line #2A

1 At 1900.8 Varas Mound 21 cut in sod

2

3 Thence East at 780 Varas a point whence

4 the North West Corner of Section 43

5 in said Block 2 Bears North 531 Varas

6 at 1900.8 Varas Mound 22 cut in sod

7

8 Thence East at 780 Varas a point whence the

9 North West Corner of Section No 46 in

10 said Block bears North 529 Varas

11 at 1900.8 Varas Mound 23 cut in sod

12

13 Thence East at 780 Varas a point whence the

14 North West Corner of Section No 47 in

15 said Block 2 Bears North 527 Varas

16 at 1900.8 Varas Mound 24 cut in sod

17

18 Thence East at 780 Varas a point whence the North

19 West Corner of Section 48 in said Block

20 2 bears North 525 Varas

21 at 1900.8 Varas Mound 25 cut in sod

22

23 Thence East at 780 Varas a point whence the

24 North East Corner of Sec 48 in said Block

25 2 a stone set in ground, being also

26 the North West Corner of Sec 35 in Block

27 48 No 26 RR les, bears North 524

28 Varas. at 1330 Varas Rita Blanca les

29 at 1900.8 Mound, 26 cut in sod

30

31 Thence East at 779 Varas a point whence

32 the N E corner of Sec 35 in said Block



H<sup>6</sup> counter 54466

Hartley Co. Entry line # 2A

1 418 a Stone bears North 523 Saras  
2 at 1900.8 Saras a Mound 27 cut  
3 in the sod

4  
5 Thence East at 778 Saras a point whence  
6 the N.E. corner of Section 34 in  
7 said Block 48 bears North  
8 521 Saras, same being a Stone  
9 at 1900.8 Saras mound 28 cut  
10 in the sod

11  
12 Thence East at 777 Saras a point whence  
13 the North East Corner of Section 33  
14 in said Block 48 a Stone  
15 bears North 520 Saras  
16 at 1900.8 Saras a Mound 29 cut  
17 in the Sod.

18 Thence East at 776 Saras a point whence the  
19 North East Corner of Section 32 in  
20 said Block 48 a Stone bears  
21 North 518 Saras, at 1900.8 Mound 30 cut in sod

22 Thence East At 503 Saras the center of the track  
23 of the F.W. & D. Co. R.R. at a point  
24 97 Saras South from R.R. mile post  
25 Marked  $\frac{D388}{F \cdot W 416}$

26 At 776 Saras a point whence the North  
27 East Corner of Section 31 in said Block  
28 48 bears North 517 Saras  
29 at 1900.8 Saras a mound 31 cut  
30 in the sod

31  
32 Thence East at 775 Saras a point whence the

R.R.

1 North East Corner of Section 30 a Stone bears  
2 North 516 Varas  
3 At 1900.8 Varas Monument 32 cut in the sod

4  
5 Thence East at 774 Varas the North East Corner  
6 of Section 29 bears North 514 Varas  
7 At 1905.8 Varas a monument 33  
8 cut in the sod.

9  
10 Thence East at 773 Varas a point whence  
11 the North East Corner of Section 28  
12 in said Block 48 bears North  
13 513 Varas,  
14 At 1900.8 Varas Monument 34 cut in  
15 the sod

16  
17 Thence East at 772 Varas a point whence the  
18 North East Corner of Section 27  
19 in said Block 48 bears North 511 Varas  
20 At 1900.8 Varas Monument 35 cut in sod

21  
22 Thence East at 771 Varas a point whence the  
23 North East Corner of Section 26 a  
24 Stone bears North 510 Varas  
25 At 1900.8 Varas Monument 36 cut in sod

26  
27 Thence East at 771 Varas a point whence the  
28 North East Corner of Section 25  
29 bears North 509 Varas  
30 At 1900.8 Varas a Monument 37 cut  
31 in the sod

32



1 Thence East at 776 Varas a point whence the  
2 North East Corner of Section  
3 No 24 in said Block 48 at Stone  
4 bears North 507 Varas  
5 At 1900.8 Varas a Mound 38  
6 cut in the sod

7  
8 Thence East at 769 Varas a point whence  
9 the North East Corner of Section 23  
10 in said Block 48 bears North  
11 506 Varas  
12 at 1900.8 Varas Mound 39  
13 cut in the sod

14  
15 Thence East at 769 Varas a point whence the  
16 North East Corner of Section 20 at  
17 Stone bears North 504 Varas  
18 at 1900.8 Varas a Mound 40 cut  
19 in the sod

20  
21 Thence East at 657 Varas a point whence  
22 the North West Corner of a Survey of 640a  
23 made for J.A. Moncreif bears North  
24 867 Varas  
25 At 1900.8 Varas a Mound 41 cut  
26 in the sod

27  
28 Thence East at 651 Varas a point whence the  
29 N.E. Corner of said J.A. Moncreif Survey  
30 being also the N.W. corner of Dec 3 in  
31 Block 1 S.P.R.R. bears North 867 Varas  
32 At 1900.8 Var. Mound 42 cut in the sod

H<sup>9</sup>

1 Thence East at 650 Varas a point whence  
2 the North East Corner of Section  
3 3 in said Block 1 bears North  
4 867 Varas  
5 At 1900.8 Varas a Mound of 3  
6 cut in the sod

7  
8 Thence East at 650 Varas a point whence  
9 the North East Corner of Section 2  
10 in said Block 1 bears North 8670  
11 At 1900.8 Varas a Mound of 4 cut in sod

12  
13 Thence East at 649 Varas a point whence  
14 the NE corner of Section 1 in  
15 said Block 1 bears North 867 Varas  
16 At 1900.8 Varas a Mound of 5 cut in sod

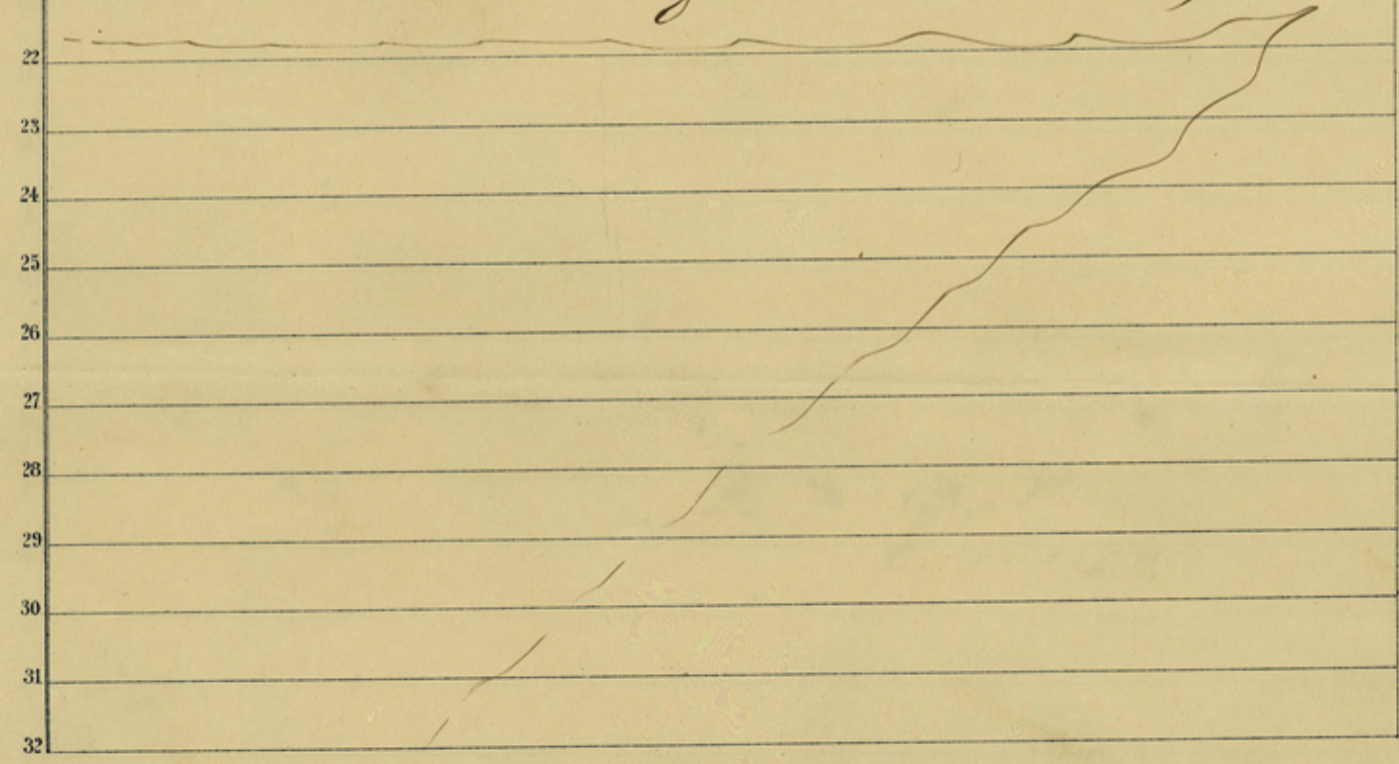
17  
18 Thence East at 648 Varas a point whence the  
19 North East Corner of Section No 2  
20 in Block 1 E T R R survey bears  
21 North 867 Varas  
22 At 1900.8 Varas a mound of 6 cut in the sod

23  
24 Thence East at 647 Varas a point whence the  
25 North East corner of Section 1 in  
26 said Block 1 E T R R bears North  
27 867 Varas  
28 At 1897 Varas a point whence the North  
29 East Corner of a Survey of 320 acres made  
30 for Geo Fason bears North 867 Varas  
31 At 1940.8 Varas Mound of 7 cut in sod

1 Thence East at 646 Varas a point whence  
2 the N.E. Corner of a Survey of 320 acres  
3 made for Jno Burleson bears North  
4 867 Varas  
5 at 1900.8 Varas a mound 48 cut wood

6  
7 Thence East at 645 Varas a point whence  
8 the North East corner of a Survey of 640  
9 acres made for T. H. Copsy bears  
10 North 867 Varas  
11 At 1900.8 Varas a Mound 49 cut wood

12  
13 Thence East at 249 Varas a Large Rock  
14 marked on North Side  $D^M | S^M$   
15 and on the South Side  $HY | M^E$   
16 This is the South West Corner of  
17 Sherman County, South East  
18 corner of Dallam County  
19 the North East corner of Hartley  
20 County and the North West  
21 corner of Moore County



State of Texas  
County of Hartley I E F Batts a practical Surveyor duly appointed and qualified to establish the North Boundary line of Hartley County do hereby certify that the corrected field notes and map of the North Boundary line of Hartley County as appears above made in accordance with an order passed by said Court requiring me to correct said field notes and map so as to show the distances to the different Corners of the Survey crossed by and adjacent to said line are true and correct as they appear on said map and in said field notes and that the work was actually done by me on the ground according to Law, and that the corners lines boundaries and marks of same whether natural or artificial are correctly described and set forth in foregoing plat and field notes as they appear on ground  
Date of Original Survey from Dec 1, 1891  
To Dec 31<sup>st</sup> 1891  
Correction made from Nov 1<sup>st</sup> 1893 to  
Nov 30<sup>th</sup> 1893  
E F Batts  
Surveyor

1 The State of Texas

2 County of Hartley J. L. Lew Lawson clerk of the  
3 County court in and for Hartley  
4 County Texas do hereby certify that the above  
5 and foregoing is a true and correct copy  
6 of the corrected map and field notes of the  
7 North Boundary line of Hartley county, and  
8 order of Commissioners court of said county  
9 approving said corrected map and field notes  
10 as the same appears of record in minutes  
11 of said court Vol. 1 Pages 242 to 249.

12 Given under my hand and seal of  
13 office this 21<sup>st</sup> day of December A. 1898

14 J. L. Lawson  
15 Clerk county court Hartley County Tex.  
16 & ex officio clerk of court

2A

Hartley Co. Bdry. (4b)

Corrected Map and

Field Notes of

North Boundary Line,

of Hartley County

Filed in Gen. S's Office

Jan'y 3<sup>rd</sup> 1894

4b

Examined & Approved

Jan'y 3<sup>rd</sup> 1894

G. A. Beaumont

See County Line by Survs-

Spoiler & Ducote

See copy of Decree of Court

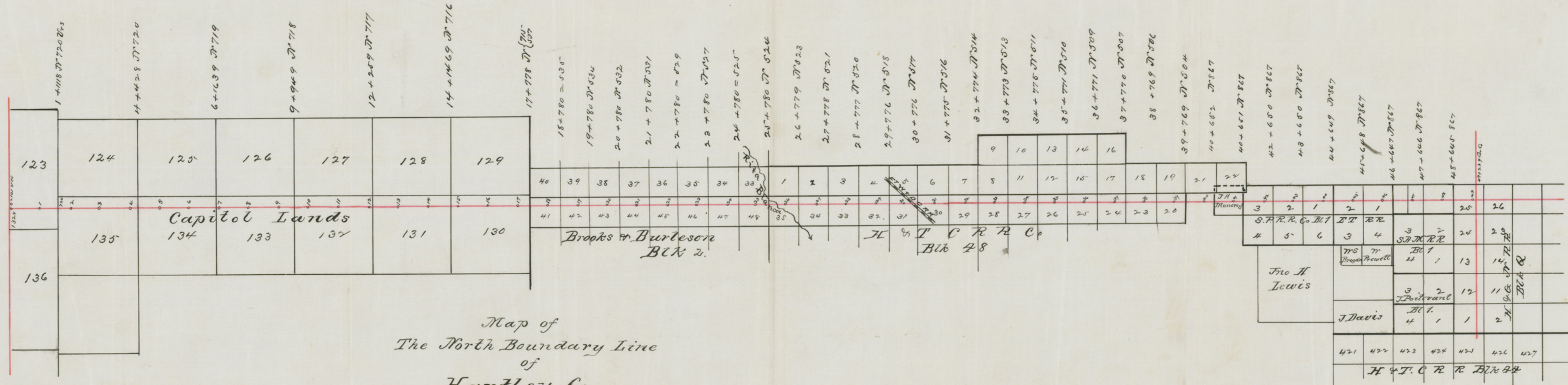
filed 3-10-1909

Decree of Court later than

this fixes boundary farther

South - Abst. corrected Vol. 32

#



Map of  
The North Boundary Line  
of  
Hartley Co.  
E. J. Ballou Dyer.

Map of Hartley Co. Dyer