

Plat of the Boundary Lines Haskell County

Knox Co.



Placed in Co. boundary
line of Haskell Co.
Placed in Co. boundary
line of said county
May 17 1897

Placed in Co. boundary
line of Haskell Co.
May 17 1897

From S.E. Corner - Mesg. 5" diam. brs. S 23 1/2° E 167 vrs. do. 4" diam. brs N 4 3/4° E 6.2 vrs. do. 6" diam brs N 22 1/2° W 10.8 vrs.
N 113 vrs. Clearfork of Brazos River

From N.W. Cor - forked mesg. brs. N 11° E 174.4 vrs. do. brs N 2° 8' W 144 3/4 vrs. Hiowa Peak brs S 50° 45' W
S.W. Cor Elijah Boren No 51 and N.E. cor Ruzhy Campbell No 50 brs S 79° 6' and W 18 5/8 vrs

From S.W. Cor 7 Mile-stone of Jones Co brs 24 vrs W, and S.E. Cor N 115 B.B.B. & C Ry Co. brs S 23° 45' E 853 vrs.

From N.E. Cor - the S.E. Cor No 2 Bl. 46 H. & T. C. Ry. Co. brs. S 86 1/2° W 336.4 vrs.
" N.E. Cor No 7 Bl. 46 H. & T. C. R. Co. brs S 66 1/2° W 484 vrs.

I, J.A. Fisher, Co. Surveyor of Haskell Co.,
do hereby certify that the above map shows the true
and correct position of the Co. Lines represented
thereon as surveyed by me on the ground

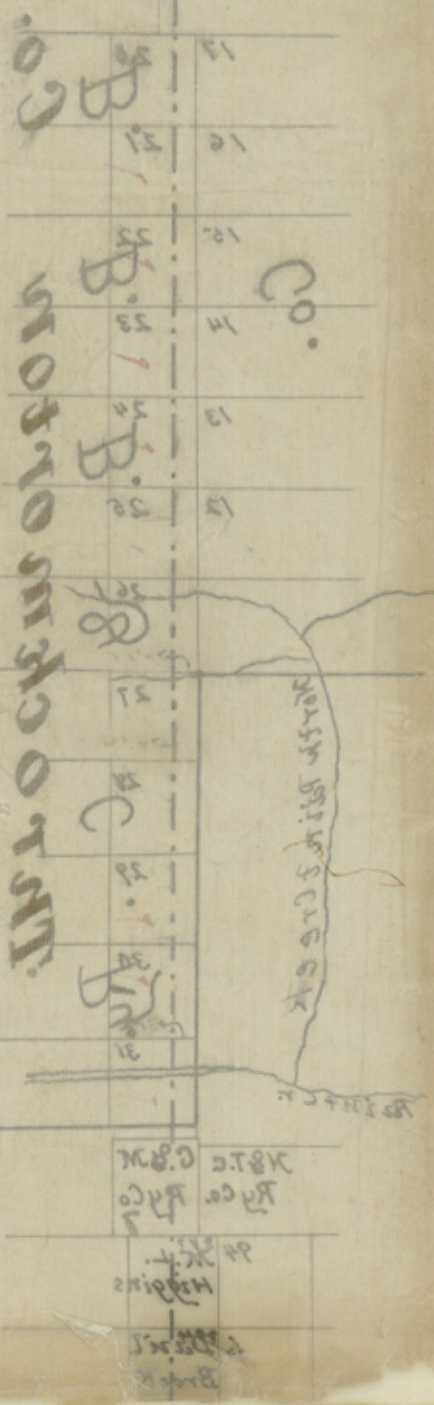
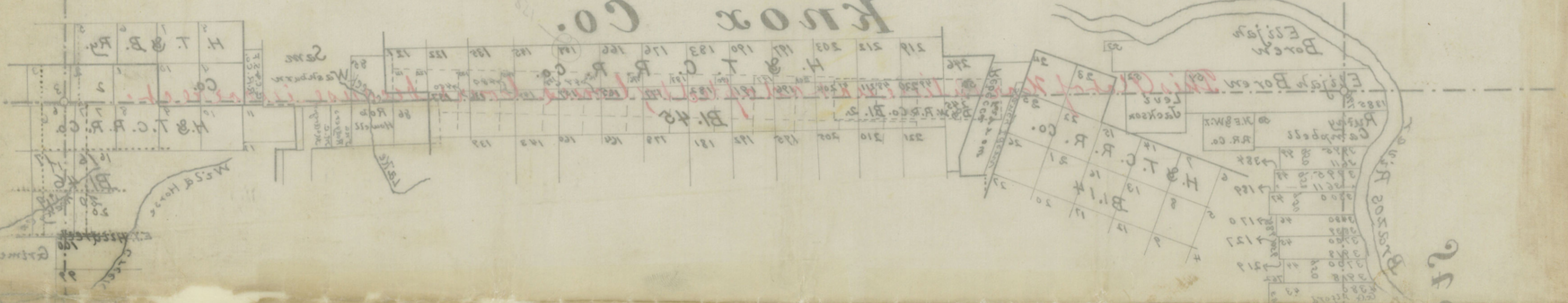
J.A. Fisher
Surveyor Haskell Co. Tex.

The dotted lines in Block 45 H. & T. C. R. Co. survey on road
line, indicate transit lines recently run by said company in a re-survey
of said Block 45;

J.A. Fisher
Surveyor, Haskell Co. Texas.

**Plat
of the
Boundary Lines
Haskell of County**

Knox Co.



⁴⁷46
 Filed May 12/94
 Haskell Co. Bdry. line
 approved 5/14/94
 G. H. Bannant

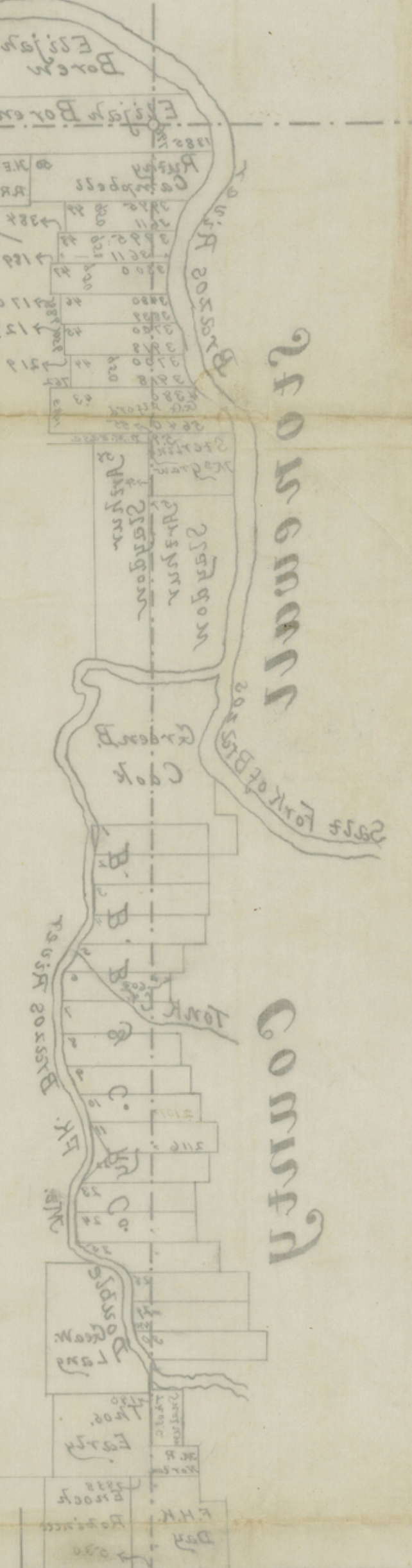
 Plat of County boundary
 line of Haskell Co.
 Placed in Co. boundary
 line of said county,
 May 17, 1937.

Placed in Co. Boundary SK
 Files by J.D. Hedick,
 May 17, 1937-

count 54571

To Rowman

County



C. Jones



From SE corner - Mess 2. diam. brs 2 1/2" E 1/4 sec 14 T. 22 S. R. 10 E. S. 20 E.
 N. 1/2 sec 14 T. 22 S. R. 10 E. S. 20 E. 1/4 sec 14 T. 22 S. R. 10 E. S. 20 E.
 From N.W. corner of Mess 2. diam. brs 2 1/2" E 1/4 sec 14 T. 22 S. R. 10 E. S. 20 E.
 From N.W. corner of Mess 2. diam. brs 2 1/2" E 1/4 sec 14 T. 22 S. R. 10 E. S. 20 E.
 From N.W. corner of Mess 2. diam. brs 2 1/2" E 1/4 sec 14 T. 22 S. R. 10 E. S. 20 E.
 From N.W. corner of Mess 2. diam. brs 2 1/2" E 1/4 sec 14 T. 22 S. R. 10 E. S. 20 E.
 From N.W. corner of Mess 2. diam. brs 2 1/2" E 1/4 sec 14 T. 22 S. R. 10 E. S. 20 E.

I, J. A. Fisher, Co. Surveyor of Haskell Co. do hereby certify that the foregoing shows the true and correct position of the Co. Lines represented thereon as surveyed by me on the 17th day of May 1937.
J. A. Fisher
 Co. Surveyor of Haskell Co.