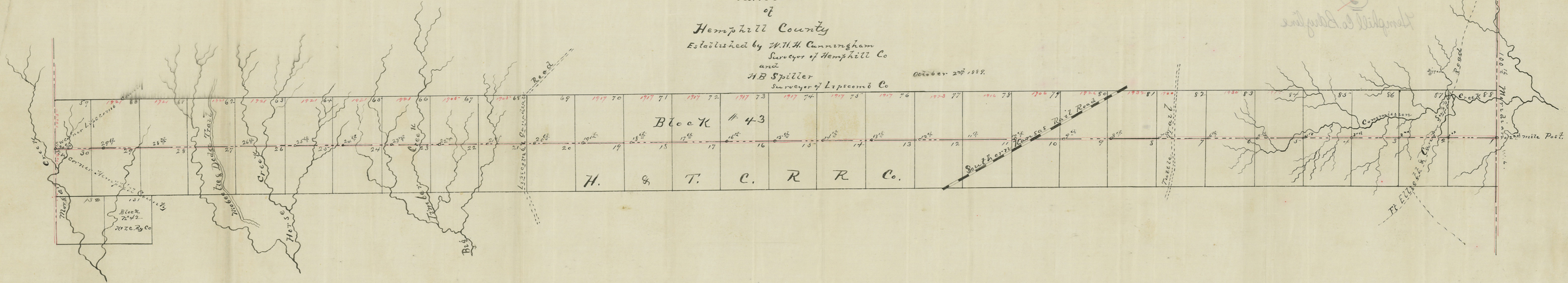


Map
of
North Line
of
Hemphill County
Established by W.H.H. Cunningham
Surveyor of Hemphill Co
and
H.B. Spiller
Surveyor of Lipscomb Co

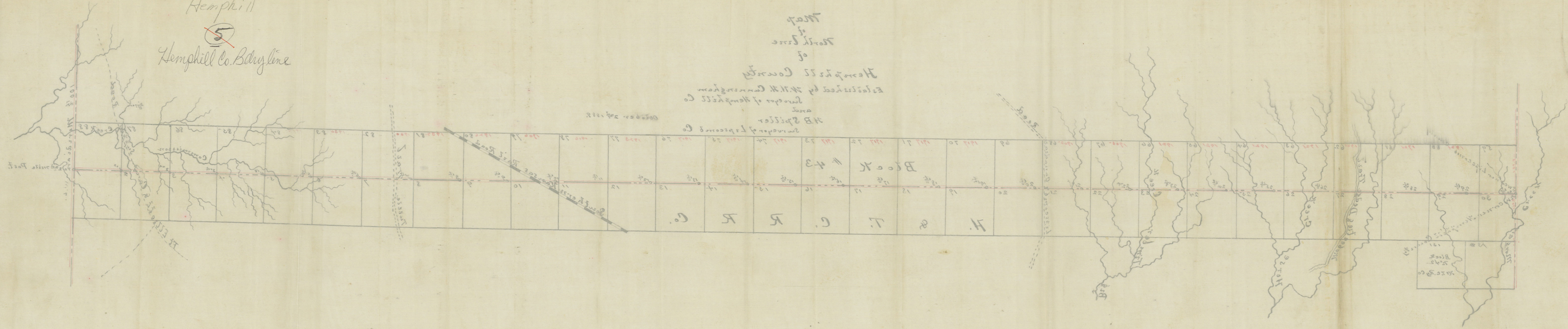
October 27th 1889.

Hemphill
Hemphill Co. Boundary



2/1
 Hemphill
 5
 Hemphill Co. Boundary

Map
 of
 North Line
 of
 Hemphill Co. County
 Established by W.M. Cunningham
 Surveyor of Hemphill Co.
 H.B. Spitzer
 Surveyor of LeFlore Co.
 October 27 1858



100 ft
 Counter 54622

Field notes of the North line of Hemphill
County, same being the South line of Lipscomb
County as established by W. H. H. Cunningham
Surveyor of Hemphill County and A. B.
Spiller Surveyor of Lipscomb County, under
orders of the Commissioners Courts of their
Respective Counties

1st Mile

Beginning at the 102nd mile post on the
100th meridian, a large Earth mound about
3/4 of a mile south from Commission Creek, same
being the S.E. corner of Sect # 88 in block no 43 of
H & T. C. R.R. Co's survey and N.E. corner of Sect
N^o 1 same block, in which mound we drove
an Iron pipe 6 ft long marked on N side "88" on
S, Side "1", on East side "102": Thence West 1900 vrs
Iron pipe driven in ground marked N end of 1st mile

2nd Mile

Thence West at 110 vrs draw of Commission creek, at 340 vrs
Elliott + Supply Road, at 1520 vrs draw of Commission Cr.
at 1900 vrs Iron pipe driven in ground MK'd "2"
N end of 2nd mile

3rd Mile

Thence West at 400 vrs cross prong of Commission creek at
1900 vrs Iron pipe 3 ft long driven in ground about 200
vrs south from South prong of Commission creek. MK'd
"111"
N end of 3rd mile

4th Mile

Thence West at 360 + 860 vrs cross draws of Commission Cr
at 1900 vrs earth mound and 4 pits N.W. corner
of Sect # 4 Block 43 in which we drove Iron pipe 3 ft
long MK'd "1V"
N end of 4th mile

5th mile

Thence West at 200 vrs cross S. prong of Commission creek at 1390 vrs cross draw of same at 1900 vrs mound end of 5th mile at eastern edge of the Sand Hills

6th mile

Thence West at 12 vrs Iron pipe 3 ft long, ^{mkd "N"} driven in ground N.W. corner of sect #5 - blk 43, at 1900 vrs end of 6th mile

7th mile

Thence West at 42 vrs East mound and 4 pits N.W. corner sect #6 blk #43 Iron pipe 3 ft ^{mkd "N"} at 1500 vrs Tuttle Cattle Trail at 1900 vrs mound end of 7th mile.

8th mile

Thence West at 72 vrs N.W. corner Sect #7 blk #43 Iron pipe 3 ft long mkd "N" at 1900 vrs mound end of 8th mile.

9th mile

Thence West 104 vrs mound + 4 pits N.W. corner of Sect N^o 8 blk #43 Iron pipe 3 ft mkd "N" at 1900 vrs mound end of 9th mile.

10th mile

Thence West 130 vrs md + 4 pits N.W. corner of Sect #9 blk #43 Iron pipe 3 ft mkd "N" at 1030 vrs cross Southern Kansas Rail Road at 1900 vrs mound end of 10th mile.

11th mile

Thence West at 136 vrs East md + 4 pits N.W. cor sect #10 blk #43 Iron pipe 3 ft mkd "N" at 1900 vrs mound end of 11th mile.

12th mile

Thence West at 152 vrs N.W. corner of Sect #11 blk #43 Iron pipe 3 ft mkd "N" at 1900 vrs mound end of 12th mile.

13th mile

Thence West at 175 rods earth mound + 4 pits Iron pipe
3ft long MK'd "X¹¹" N.W. corner of sect #12 blk #43
at 1900 rods mound end of 13th mile

14th mile

Thence West at 192 rods N.W. corner of sect #13 blk
#43 Iron pipe 3ft MK'd "X¹¹¹" at 1900 rods end
of 14th mile.

15th mile

Thence West at 209 rods mound + 4 pits N.W. corner
of sect #14 blk #43 Iron pipe MK'd "X^{1V}" at
1900 rods end of 15th mile.

16th mile

Thence West at 226 rods mound N.W. corner of sect
#15 in blk #43 Iron pipe MK'd "X^V" at 1900 rods
end of 16th mile.

17th mile

Thence west at 243 rods mound and four pits N.W.
corner sect #16 blk 43 Iron pipe MK'd "X¹⁶" at
1900 rods end of 17th mile

18th mile

Thence West 260 rods mound + 4 pits N.W. corner
of sect #17 in blk #43 Iron pipe MK'd "X¹⁷" at
1900 rods end of 18th mile.

19th mile

Thence West at 277 rods mound + 4 pits N.W. corner of
sect #18 blk #43 Iron pipe 3ft long MK'd "X¹⁸"
at 1900 rods end of 19th mile

20th mile

Thence West at 294 rods mound + 4 pits N.W.
corner sect #19 blk #43 ^{iron pipe MK'd "X¹⁹"} at 1900 rods mound
of Earth on Western edge of sand Hills
end of 20th mile.

21st mile

1 Thence West 311 vrs Earth Mound + 4 pits
 2 capped with a flat rock marked ~~NE~~ ^{NE} ~~same~~
 3 being N.W. corner of Sect #20 blk #43 said
 4 corner is on the east side of the Lipscomb ~~and~~
 5 Canadian Road at 1800 vrs cross prong of
 6 Big Timber creek at 1900 vrs end of 21st mile
 7 22nd mile

8 Thence West at 316 vrs a md + 4 pits N.W. corner
 9 of sect #21 blk #43 Iron pipe 3ft long mkd ²¹ N
 10 crossing draws of Big Timber creek 1900 vrs end
 11 of 22 mile
 12 23rd mile

13 Thence West 321 vrs pile of stone N.W. corner of
 14 sect #22 blk #43 Iron pipe 3ft mkd "22" N at 440 vrs
 15 + 1420 vrs cross prong of Big Timber creek at 1900 vrs
 16 end of 23rd mile
 17 24th mile

18 Thence West at 330 vrs West prong of Big Timber creek
 19 342 vrs Iron pipe 3ft mkd ²³ N N.W. corner of Sect
 20 #23 blk 43 at 1900 vrs end of 24th mile on divide
 21 between Big Timber + Horse creeks
 22 25th mile

23 Thence West at 363 vrs md + 4 pits, Iron pipe
 24 3ft mkd "24" N N.W. corner Sect #24 blk 43
 25 at 1900 vrs end of 25 mile
 26 26th mile

27 Thence West at 384 vrs N.W. corner sect #25-
 28 blk #43 Iron pipe 3ft mkd "25" N at 800 + 1700
 29 vrs cross ~~prong~~ ^{prong} of Horse creek at 1900 vrs
 30 end of 26th mile
 31 27th mile

32 Thence West at 405 vrs N.W. corner of sect
 33 #26 blk 43 Iron pipe mkd ^{XXVII} N at 1100 vrs
 34 cross Mobeetie + Dodge Road at 1900 vrs

1 end of 27th mile

2 28th mile

3 Thence West at 1700 vrs cross Horse creek at
4 426 vrs N.W. corner of Sect # 27 blk # 43 mark
5 4 pits - Iron pipe 3 ft mkd "XV" at 1900
6 vrs end of 28th mile on divide between Horse
7 creek and Morgan creek -

8 29th mile

9 Thence West at 447 vrs pile of stone in break
10 of Morgan creek N.W. corner of sect # 28
11 blk # 43, ^{Iron pipe 3 ft long mkd "XV"} at 1240 vrs cross East prong of Mor-
12 gan creek at 1900 vrs end of 29th mile.

13 30th mile

14 Thence West at 468 vrs N.W. corner of sect # 29
15 in blk # 43 Iron pipe mkd "N" at 1280 vrs
16 pass 43 vrs north of large rock set in ground mkd
17 N.L.R.C. at 1900 vrs end of 30th mile an Iron
18 pipe 6 ft long driven in ground 18 inches +
19 around which is build a stone mound 4 ft
20 high 3 ft base pipe mkd "30" at N.W. cor-
21 ner of Humphill County & S.W. corner
22 of Lipscomb County. Said corner
23 is 1950 vrs north from the N.W. corner of
24 sect # 13 2nd in block n^o 42 of H. & T. B. Ryces
25 surveys in Humphill County, ^{as established by J. Long State Surveyor in his 17 survey} and 880 vrs east
26 from Morgan creek.

27 Surveyed Oct 2nd 1889

Arthur T. J. Bill } Chain Carrier.

John O'Brien

29 We: H. H. H. Cunningham, Surveyor of Humphill County,
30 and H. B. Speller, Surveyor of Lipscomb County, do
31 hereby Certify that in obedience of an order of the
32 Commissioners Courts of our respective Counties
33 have surveyed, measured and marked the dividing
34 line between said Counties, commencing at the 102nd

1 mile post on the 100 meridian and extending thirty
2 mile west and that in the foregoing field notes the
3 marks, natural and artificial are truly described
4 and that the accompanying map is in accordance
5 with said field notes.

6 W. H. Cunningham, Surveyor Hemp Hill Co.
7 A. B. Spiller Surveyor Lipscomb Co.

8
9
10 Counter 54628

Field Notes

of
North Line
of
Hemp Hill Co

Examined and approved
6/3/93 Beaumont

Filed April 4th 1890

Chief Clerk
C. W. Proctor

Hemp Hill Co. Bdry. Line #2