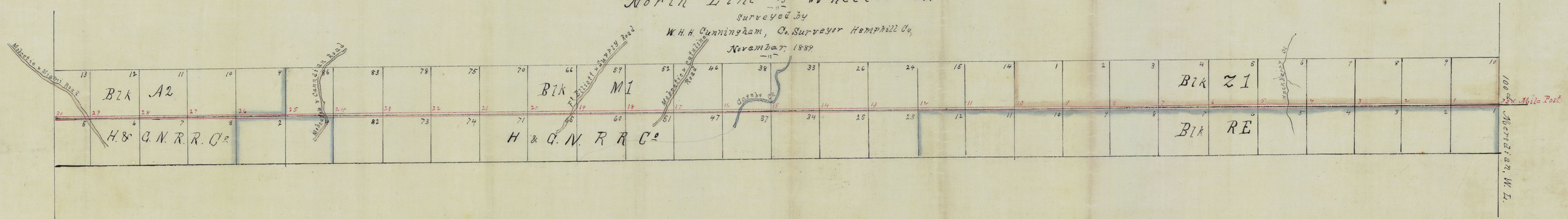


Map
of
South Line of Hemphill County
and
North Line of Wheeler Co.

Surveyed by
W. H. H. Cunningham, Co. Surveyor Hemphill Co.,
November, 1889.



1 Field Notes of the Boundary Line between
2 Hemphill and Wheeler Counties, Texas.

3 First Mile.

4 Beginning at the 72nd Mile Post on the One
5 Hundredth Meridian West Longitude, being
6 also the S. E. corner of Survey No. 10 in Block
7 Z1 in Hemphill Co. and the N. E. corner of
8 Survey No. 1 in Block R E in Wheeler Co.,
9 the same being a mound and four pits,
10 in which was set an iron pipe five feet
11 long and 1½ inches in diameter marked 72.
12 Thence West 1900 varas, variation 11° 07', to the S. E.
13 corner of Survey No. 9 in Block Z1 and the
14 N. E. corner of Survey No. 2 in Block R E, set
15 iron pipe 4" x 1½" 2½ ft in the ground marked M.¹

16 Second Mile.

17 Thence West, variation 11° 07', 1900 varas, to the
18 S. E. corner of Survey No. 8 in Block Z1 and
19 the N. E. corner of Survey No. 3 in Block R E;
20 set iron pipe as before marked M.²

21 Third Mile.

22 Thence West, variation 11° 07', 1900 varas to
23 the S. E. corner of Survey No. 7 in Block Z1
24 and the N. E. corner of Survey No. 4 in Block
25 R. E.; set iron pipe as before, marked M.³

26 Fourth Mile.

27 Thence West, variation 11° 07', 1900 varas to the
28 S. E. corner of Survey No. 6 in Block Z1 and
29 the N. E. corner of Survey No. 5 in Block R E;
30 set iron pipe as before marked M.⁴

31 Fifth Mile.

32 Thence West, variation 11° 07', 1900 varas to

1 the S.E. corner of Survey No. 6 in Block Z 1
 2 and the N.E. corner of Survey No. 6 in Block
 3 R E; set iron pipe as before marked M⁵
 4 Sixth Mile.

5 Thence West, variation 11° 07', at 920 varas cross
 6 the head of Hackberry Creek, 1900 varas the S.E.
 7 corner of Survey No. 4 in Block Z 1 and the N.E.
 8 corner of Survey No. 7 in Block R E; set iron
 9 pipe as before marked M.
 10 Seventh Mile.

11 Thence West, variation 11° 07', 1900 varas, to the
 12 S.E. corner of Survey No. 3 in Block Z 1 and
 13 the N.E. corner of Survey No. 8 in Block R. E;
 14 set iron pipe as before marked M.
 15 Eighth Mile.

16 Thence West, variation 11° 07', 1900 varas to
 17 the S.E. corner of Survey No. 2 in Block Z 1
 18 and the N.E. corner of Survey No. 9 in Block
 19 R E; set iron pipe as before marked M.
 20 Ninth Mile.

21 Thence West, variation 11° 07', 1900 varas to
 22 the S.E. corner of Survey No. 1 in Block Z 1
 23 and the N.E. corner of Survey No. 10 in
 24 Block R E; set iron pipe as before
 25 marked M.
 26 Tenth Mile.

27 Thence West, variation 11° 07', 1900 varas to the
 28 N.E. corner of Survey No. 11 in Block R E, and
 29 the S.W. corner of Survey No. 1 in Block Z 1 and
 30 the S.E. corner of Survey No. 14 in Block No. 1, H
 31 & G. N. R. R. lands; set iron pipe as before
 32 marked M.
 10

Eleventh Mile.

Thence West, variation 11° 07', 1900 varas to the S. E. corner of Survey No. 15 in Block No. 1 and the N. E. corner of Survey No. 12 in Block R. E., set iron pipe as before marked M.¹¹

Twelfth Mile.

Thence West, variation 11° 07', to the S. E. corner of Survey No. 23 and the N. E. corner of Survey No. 24 in Block No. 1; set iron pipe as before marked M.¹²

Thirteenth Mile.

Thence West, variation 11° 07', 1900 varas to the S. E. corner of Survey No. 26 and the N. E. corner of Survey No. 25 in Block No. 1 set iron pipe as before marked M.¹³

Fourteenth Mile.

Thence West, variation 11° 07', 1900 varas to the S. E. corner of Survey No. 33 and the N. E. corner of Survey No. 34 in Block No. 1; set iron pipe as before marked M.¹⁴

Fifteenth Mile.

Thence West, variation 11° 07', 1900 varas to the S. E. corner of Survey No. 38 and the N. E. corner of Survey No. 37 in Block No. 1. set iron pipe as before marked M.¹⁵ from

Another Hackberry 10 inches diameter bears S. 19° 05' E. 186 varas.

Sixteenth Mile.

Thence West, variation 11° 07', at 1035 varas cross Gagsby Creek, at 1900 varas the S. E. corner of Survey No. 46 and the N. E. corner of Survey No. 47 in Block No. 1; set iron pipe as before marked M.¹⁶

distance not given

which a Hackberry 12 inches diameter bears S. 5° 25' E. 202.2 varas.

Seventeenth Mile.

Thence West, variation $11^{\circ} 07'$, 1900 varas to the S. E. corner of Survey No. 52 and the N. E. corner of Survey No. 51 in Block No 1; set iron pipe as before marked M.¹⁷

Eighteenth Mile.

Thence West, variation $11^{\circ} 07'$, at 550 varas cross the divide road from Moberly to Catalina, at 1900 varas the S. E. corner of Survey No. 59 and the N. E. corner of Survey No. 60 in Block No 1; set iron pipe as before marked M.¹⁸

Nineteenth Mile.

Thence West, variation $11^{\circ} 07'$, 1900 varas to the S. E. corner of Survey No. 66 and the N. E. corner of Survey No. 65 in Block No 1; set iron pipe as before marked M.¹⁹

Twentieth Mile.

Thence West, variation $11^{\circ} 07'$, at 260 varas cross the old Fort Elliott and Camp Supply road, at 1900 varas the S. E. corner of Survey No. 70 and the N. E. corner of Survey No. 71 in Block No 1; set iron pipe as before, marked M.²⁰

Twenty-first Mile.

Thence West, variation $11^{\circ} 07'$, 1900 varas to the S. E. corner of Survey No. 75 and the N. E. corner of Survey No. 74 in Block No 1; set a stone $5 \times 6 \times 14$ inches marked M.²¹

Twenty-second Mile.

Thence West, variation $11^{\circ} 07'$, 1900 varas to the S. E. corner of Survey No. 78 and the N. E. corner of Survey No. 77 in Block No 1; set stone $5 \times 6 \times 16$ inches marked M.²²

Twenty-third Mile.

Thence West, variation $11^{\circ} 07'$, 1900 varas to the S. E. corner of Survey No. 83 and the N. E. corner of Survey No. 82 in Block No. 1; set stone $6 \times 8 \times 16$ inches marked M^{23} .

Twenty-fourth Mile.

Thence West, variation $11^{\circ} 07'$, 1900 varas to the S. E. corner of Survey No. 86 in Block No. 1; set Stone $6 \times 8 \times 14$ inches, marked M^{24} .

Twenty-fifth Mile.

Thence West, variation $11^{\circ} 07'$, at 680 varas cross Mexican and Canadian road; at 1900 varas S. W. corner of Survey 86 in Block No. 1 and S. E. corner of Survey No. 9 in Block A2 H. & G. N. R. R. lands, in which is an iron pipe $2\frac{1}{2}$ inches in diameter and 3 ft high, marked "9, B. A2; added the mark M^{25} .

Twenty-sixth Mile.

Thence West, variation $11^{\circ} 22'$, 1900 varas (actual measurement 1892 $\frac{1}{2}$ v.) to the S. E. corner of Survey No. 10 and the N. E. corner of Survey No. 8 in Block A2, H. & G. N. R. R. lands; set stone $8 \times 10 \times 20$ inches marked M^{26} .

Twenty-seventh Mile.

Thence West, variation $11^{\circ} 27'$, 1900 varas (actual measurement 1892 $\frac{1}{2}$ varas) to the S. E. corner of Survey No. 11 and the N. E. corner of Survey No. 7 in Block A2, the same being an iron pipe $1\frac{1}{2}$ inches diameter, marked "7, 8, 10, 11, A2." Added the mark M^{27} .

Twenty-eighth Mile.

Thence West, variation $11^{\circ} 20'$, 1900 varas (actual

1 measurement 1892 1/2 varas) to the S. E. corner of
2 Survey No. 12 and the N. E. corner of Survey
3 No. 6 in Block A2; set iron pipe 5 feet
4 long and 1 1/2 inches diameter, marked M²⁸

Twenty-ninth Mile.

6 Thence West, variation 11° 20', 1900 varas (ac-
7 tual measurement 1892 1/2 varas) to the S. E.
8 corner of Survey No. 13 and the N. E. corner
9 of Survey No. 5 in Block A2, the same
10 being an iron pipe 1 1/2 inches in diameter,
11 marked "5, 6, 12, 13, B. A2, added mark M²⁹

Thirtieth Mile.

12 Thence West, variation 11° 20', 1900 varas to the
13 S. W. corner of Survey No. 13 and the N. W. corner
14 of Survey No. 5 in Block A2, the S. W. corner
15 of Hemp Hill Co. and the N. W. corner of Wheeler
16 Co., the S. E. of Roberts & the N. E. of Gray Co.; a
17 dressed stone 12 x 14 x 24 inches, marked, "S. W.
18 N." on North East face; "S. L. R. Co" on North
19 West face; "N. E. G." on South West face; "N. W. W"
20 on South East face.

23 John Cooper } Chairmen
24 John Akene }

26 I, W. H. Cunningham, Surveyor of Hemp-
27 hill Co., do hereby certify that in compliance
28 with an order of the Commissioners' Court of
29 said County I have surveyed, measured
30 and marked the dividing line between Hemp-
31 hill and Wheeler Counties, commencing at the
32 Twenty-second Mile Post on the One Hundredth

1 Meridian, West Longitude, and running thence
2 thirty miles West, and that in the foregoing
3 field notes the marks, natural and artificial,
4 are truly described.

5 W. A. H. Cunningham,

6 Co. Surveyor, Hemphill Co.

7 Canadian, Texas, }

8 July 8, 1893 }

9 Approved this 15th day of August 1893

10 D. Gray

County Judge

11 Robt. Moody

Commissioner

12 G. P. Palmer

Commissioner

13 attest

J. H. Hopkins

Commissioner

14 J. H. Hopkins's Clerk

15
16
17
18
19 counter 637
20
21
22
23
24
25
26
27
28
29
30
31
32

Hemphill Co. (3) Bdry line
Hemphill Co
South Boundary

Filed Sept 9th 1893

Examined and approved
9/9/93 G. W. Beaumont

Counter 54638