

No. 127

On this the 12<sup>th</sup> day of July 1881. came on for consideration the report of the survey of the division line between the Counties of Hill and McLinnan made by C. Veale County surveyor of Hill County and D. M. Jameson surveyor of McLinnan County in pursuance of a former order of this Court which said report being duly considered it is ordered that the same together with the plat and field notes accompanying be placed of record upon the minutes of this Court and that the Clerk of this Court furnish the Commissioner of the General Land office of the State of Texas with a certified copy of same - Which said report is as follows - to-wit -

To the Honorable Commissioners Court of Hill County Texas. In obedience to your order at the May Term 1880 appointing me to survey and permanently establish the boundary lines between Hill and McLinnan Counties D. M. Jameson who was appointed by the Commissioners Court of McLinnan County to represent said County in said survey. We met on the line between said Counties on the Brazos river the 20<sup>th</sup> day of July last, by the aid of old settlers we were enabled to find the line at its crossing of the Brazos River. On the east bank we

**3** Hill Co Bdry Line 1  
 Called August 22<sup>nd</sup> / 81.  
 Charles A. Fisher  
 Clerk  
 County 54722



found the line plainly marked and the initials of McLennan County line cut on a large pecan tree. On the west side of the River the initials of said County old but plainly cut on a large Ash tree. After having traced the line both West and east of the river which we found plainly marked apparently twenty five or more years ago which was verified by old settlers who saw the line run. The foregoing evidence being satisfactory we proceeded to work.

Beginning on the east bank of the Brazos river and on the line above mentioned by setting a Cedar post 8 in dia three feet in the ground and two above with the initials S.W. cor HC from which a pecan 36 in dia marked M<sup>c</sup>L Co L bs N 61 E 8 vs an elm 10 in dia marked H bs N 11½ W 4½ vs a pecan marked V bs N 82½ W 4 vs Do 24 in dia marked J bs S 83½ E 26. Thence N 60 E at 200 vs a branch 1 at 1064 vs a branch at 1900 vs 1<sup>st</sup> mile a mound two feet high. Thence N 60 E following old marked line crossing east line of the S.W. Hill survey 1038 vs N 30 W from his S.E. corner 2 at 1900 vs 2<sup>nd</sup> mile a mound two feet high. Thence N 60 E at 60 vs small prairie at 290 vs enter timber continuing on old marked line crossing the east line of the Greene Mc Donald survey 1029 vs N 30 W from his S.E. corner



- 3 at 1900 vs 3<sup>rd</sup> mile a mound two feet high. Thence N 60 E at 666 vs cross Patton's branch continuing N 60 E crossing the east line of the W. W. Burleson survey 570 S 30 E from his
- 4 S. E. corner at 1900 vs 4<sup>th</sup> mile a mound two
- 5 feet high. Thence N 60 E at 1900 vs 5<sup>th</sup> mile a mound two feet high. Thence N 60 E crossing east line of the W<sup>m</sup> Santy and the West line of the Edward Hall surveys 988 vs N 30 W from the S. E. corner of said Santy and S. W.
- 6 corner of said Hall surveys at 1900 vs 6<sup>th</sup> mile a mound two feet high. Thence N 60 E at 1045 vs Aquilla Creek on line plainly marked through the bottom at 1891 vs crossing of the
- 7 Texas Central R. R. at 1900 vs 7<sup>th</sup> mile a mound two feet high. Thence N 60 E entering a high prairie and crossing the east line of said Hall 943 vs N 30 W from the S. E. corner
- 8 of same at 1900 vs 8<sup>th</sup> mile a mound two feet high. Thence N 60 E crossing the east line of Levi Pennington's survey 933 vs N 30 W from his S. E. corner at 1900 vs 9<sup>th</sup> mile a mound two feet high. Thence N 60 E crossing the east line of John Key survey 917 vs from his S. E. corner at 1814 vs a branch at 1900
- 10 vs 10<sup>th</sup> mile a mound two feet high from which a gunnelastic 12 in dia marked H ls S 7 1/2 W 82 vs Po 10 in dia marked



- M. be S  $54\frac{1}{2}$  E  $51\frac{1}{2}$  vs. thence N 60 E crossing the east line of Ephraim Heath's survey 898 vs
- 11 N 30 W of his S.E. corner at 1900 vs 11<sup>th</sup> mile a mound two feet high - thence N 60 E crossing S. A. Plain's east line 886 N 30 W from his S.E. corner at 1542 vs passing two elms on original line marked X at 1900
- 12<sup>th</sup> vs 12<sup>th</sup> <sup>mile</sup> a mound two feet high - thence N 60 E crossing east line of the John Gibson survey 872 vs N 30 W from his S.E. corner at
- 13 1900 vs 13<sup>th</sup> mile a mound two feet high thence N 60 E at 1200 vs crossing the Waco and Dallas Road and crossing the east line of Enoch Poland survey 859 vs N 30 W
- 14 from his S.E. corner at 1900 vs 14<sup>th</sup> mile a mound two feet high - thence N 60 E crossing John Obien's east line 856 N 30 W from his S.E.
- 15 corner at 1900 vs 15<sup>th</sup> mile a mound two feet high - thence N 60 E crossing the east line of Thos Carter survey 8 vs N 30 W from his S.E. corner and crossing the east line the J. A. Shelby survey two varas N 30 W from his S.E. corner crossing the east line T. Vivien survey 843 vs N 30 W from his S.E. corner and crossing the east line of W. K. Quiney and Williams survey at 1879 vs set
- 16 a cedar post *sin dia* for the S.E. corner of



McLennan County, which stands on B.P.B.  
 & C.R.R. Co survey 27 vs N 30 W and 149 vs N 60  
 E from the S.E. corner of the Mc Kinney and  
 Williams 200 acre survey sixteen miles  
 from the Brazos River said post is mark-  
 ed NE cor. MCo on last mile less 21 vs the beg-  
 inning post being set 21 vs from the river  
 the nearest solid ground. Thence S 30 E crossing  
 the south line B.P.B. & C.R.R. Co survey N 60 E  
 1 170 from its S.W. corner at 1900 vs 1st mile -  
 2 Thence S 30 E at 1900 vs 2nd mile a mound two feet  
 high. Thence S 30 E crossing the south boundary  
 line of the John M. Henry survey 133 vs. N 60 E  
 3 from his S.W. corner at 1900 vs 3rd mile a  
 mound two feet high. Thence S 30 E crossing  
 South line of the Alford Morrow survey 116  
 vs N 60 E from its S.W. corner and crossing  
 the south line of the E. Votaw survey 113 vs from  
 4 his S.W. corner at 1900 vs 4th mile a mound  
 two feet high. Thence S 30 E crossing the South  
 line of the M. Votaw survey 103 vs N 60 E from  
 his S.W. corner and crossing the North line  
 of the Lideon Pace survey 87 1/2 vs S 60 W from  
 5 his N.E. corner at 1900 vs 5th mile a mound  
 two feet high. Thence S 30 E. crossing the north  
 line of W. S. Sweat's survey 112 vs S 60 W from  
 6 his S.W. corner at 1900 vs 6th mile a mound  
 2 ft high  
 on the bed of Sweet branch. Thence S 30 E



1881  
Hills Co. Bldg.

- crossing the north line of the J. E. Sweat survey
- 18 1/2 vs S 60 W from his N.E. corner and crossing
- the north line of the H. T. Houston survey 25 vs
- 7 S 60 W from his N.E. corner at 1900 vs 7th <sup>mile</sup> a mound
- two feet high. Thence S 30 E crossing north line
- of H. T. Treadwell 30 vs N 60 E from his N.W.
- 8 corner at 1900 vs 8th mile a mound two feet
- high. Thence S 30 E crossing S. L. Smith's North
- line 41 vs from his N.E. corner at 2800 vs
- Tehuacana Creek and crossing north line
- of Sarah Carters survey 51 vs S 60 W from her
- 9 N.E. corner at 1900 vs 9th <sup>mile</sup> a mound two feet
- high. Thence S 30 E at 90 vs cross Wolf creek
- and crossing north line of J. M. Roberts survey
- 61 vs S 60 W from his N.E. corner crossing
- the North line of W. P. Johnson 66. vs S 60 W
- from his N.E. corner and crossing the
- North line of the P. B. B. & C. R. R. Co survey
- 10 1900 vs at 10th mile a mound two feet
- high. Thence S 30 E at 1380 vs a small creek
- crossing the north line of P. B. B. & C. R. R. Co
- survey 252 vs N 60 E from its N.W. corner at
- 11 1900 vs 11th mile a mound two feet high
- Thence S 30 E 1900 vs set a Cedar post for the
- 12th mile from the N.E. corner of McLennan
- County with the initials M<sup>c</sup>L Co L from which
- a post oak 30 in dia marked H vs N 33 1/4 E
- 43 1/2 vs P 24 in dia marked L vs S 81 E 36 1/5



vs. Po 15 in dia marked M be  $S 24 \frac{1}{4} E 59 \frac{1}{2}$  - variation  $8^{\circ} 30''$

Chain carriers } This 4<sup>th</sup> day of August  
James H. Ables } 1880 -  
John C. Boone }

The above is hereby respectfully submitted.

C. Veale

Surveyor Hill Co Texas

D. M. Jameson

Surveyor McLennan Co Tex.

County 54728

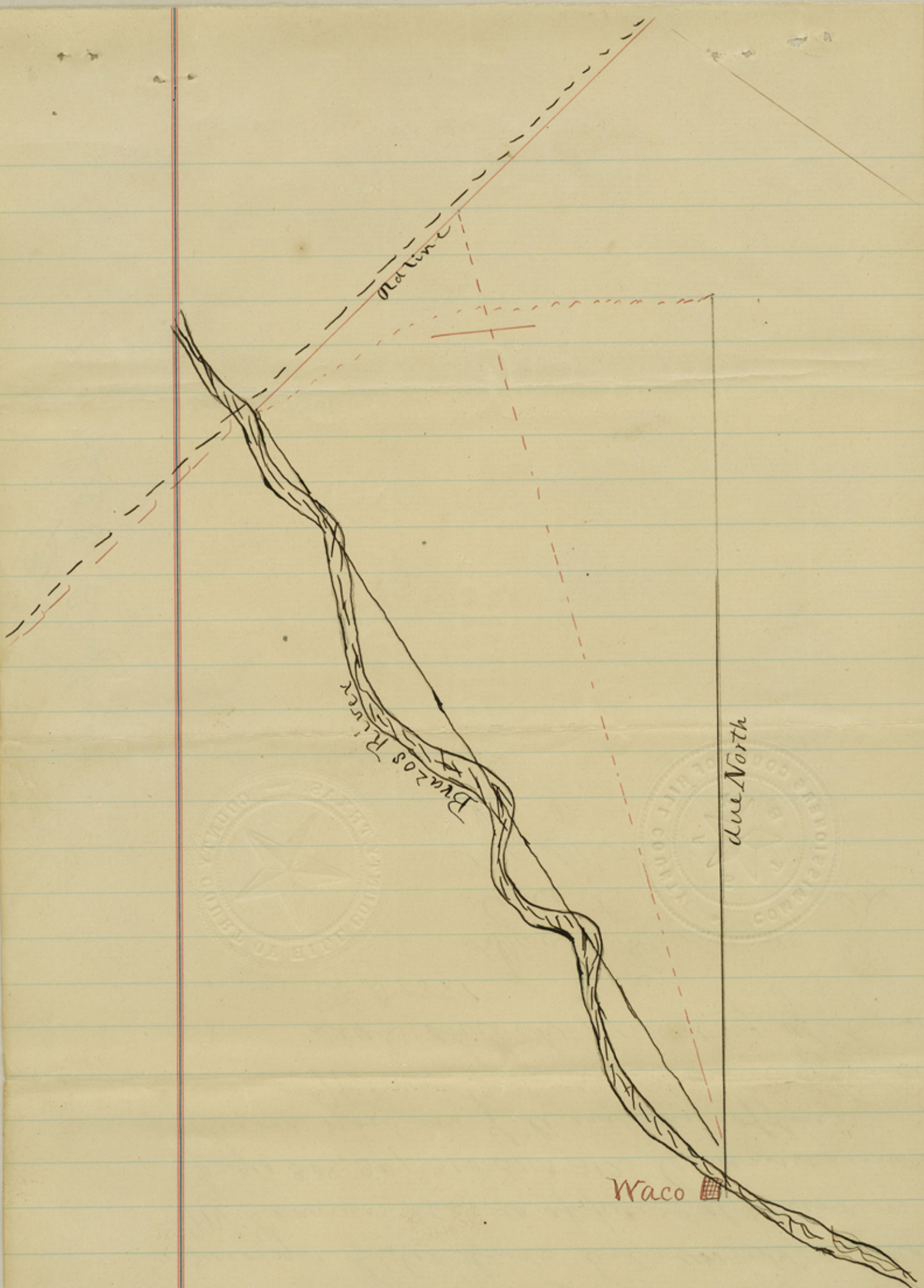


To the Hon Commissioners Court of  
Hill County Texas

In obedience to your second  
order in the matter of establishing  
the County line between Hill  
and McLennan Counties I beg leave  
to submit the following the object of  
this second survey was to establish  
a point on the Brazos River 15 miles  
above Waco Village I commenced  
said second survey on the 10th day of  
August by commencing at the East  
end of Bridge Street in the City of  
Waco and running in a North West  
direction to the North line as mentioned  
in my first report intersecting said  
line at about 7 miles from the  
Brazos river and upon a careful  
calculation of the Latitude of this line  
gives on a direct line from Waco  
to the crossing of the line on the  
Brazos river as mentioned in my  
first report to be 14 miles and 1784  
vrs thereby showing that 15 miles on  
direct line from Waco to the crossing  
of said old line on the Brazos river  
would over reach said old line 216  
vrs = all of which is Respectfully subm-  
itted

C. Veale  
Surveyor





The State of Texas I have ordered  
 County of Hill Clerk of the County  
 Court of Hill County Texas hereby



Certify that the above and foregoing  
is a true and correct copy of the Report  
and Supplementary Report of the Trial  
Surveyor of the line between Hill and  
McLennan Co's as appears of record on  
pages 308, 309, 310, 311 & 312. Commissioners  
Record now on file in my office  
Witness my hand and official  
seal this the 14th day of August  
A.D. 1881

David Deussen  
Clerk of the Hill Co. Ex  
By H. M. Spomer  
Deputy

Counter 54731

✓ Hill Co. Boundary line