

All this the 20th day of March  
1882 came on for consideration the report  
of W M Vaughan County Surveyor of Hill County  
and C C Gibbons a surveyor representing  
Ellis County in pursuance of a former order  
of this Court which said report being duly  
considered it is ordered that the same together  
with the plat and field notes accompanying  
be placed of record upon the minutes of this  
Court <sup>and that the clerk of this Court</sup> furnish the Commissioner of the Land  
and Office of the State of Texas with a cer-  
tified copy of same which said report is as  
follows To wit:

In the matter of Ellis  
vs Hill County Line To the Honorable  
Court of Hill County in March term  
Your surveyor duly appointed to  
survey and establish the County Line between  
Hill and Ellis Counties would respectfully  
report as follows about the middle of  
December A D 1881 in connection with C C  
Gibbons a Surveyor representing Ellis  
County we succeeded in locating the NW  
Corner of Navarro County to our satisfaction  
As a point to commence said survey we  
planted a cedar post about 8 in dia 3  
feet deep in ground and two feet above  
marked with the names of the Counties  
and initials of the Corners & we  
also erected a mound 2 feet high  
whence an E line bears S 55 3/4 W 340



was another brs 55 4 1/2 N 59 2 W and  
this corner is on the F Gibb's survey  
130 4 1/2 W and S 30 E and 120 W and N 60 E  
of said Gibb's mark Nth corner.

Thence S 60 W passing 194 W and N 30 W  
of Jesse Newton's S E corner at 1900 W and  
1st mile a cedar post & mound 2 ft high  
a Hackberry brs S 83 W 80 W and a mesq -  
N 48 W 27 W.

Thence again S 60 W  
at 460 W and timber an elm marked HE  
at 800 W and come to Reeland Creek  
course S 50 E and passed 217 W and S 30  
E of the Jyrd E Joelson's N W corner  
at 1900 W and a cedar post & mound  
2 feet high in open prairie.

Thence again S 60 W pass 253 W and  
S 30 E of L W White's N W corner at  
1900 W and the S W corner of Ellis County  
on West bank of Cotton Wood branch  
a cedar post about 8 in dia for  
corner marked with initial letters  
of the corners and planted 3 feet in  
ground and two feet above and a  
mound 3 feet high as the County  
corner was in a deep prairie planted  
the post 18 W and S 30 E of tree corner  
from said post an elm brs S 79 E 40 W  
another brs S 86 1/2 E 38 1/2 W and this corner  
is on the J J Williams sur 253 W and S 30 E  
and 440 W and S 60 W of his N E corner.

Thence N 30 W passing 470 W and N 60 E of  
May Williams' W N corner at 1900 W and

Field notes  
1st mile

2nd mile

3rd mile

4th mile



- 2<sup>d</sup> mile a Mound 2 feet high  
Thence again N 30 W at 1427 vrs pass  
over Jas Staltes & Corner at 1400 vrs 2<sup>d</sup>  
mound 2 ft high in open prairie -
- 3 mile Thence continue N 30 W at 1725 vrs a road  
at 1900 vrs is 3<sup>d</sup> mound. Thence a double  
hackberry brs S 32 E 580 vrs the mound  
is 27 vrs West of U Seamonis & line
- 4<sup>th</sup> mile Thence again N 30 W at 1200 vrs Crassa road  
at 1900 vrs 4<sup>th</sup> mound of earth and white  
rock a double Elm brs S 62 W 50 vrs an  
Elm 10 in brs S 54 1/2 W 118 vrs a Hackberry  
brs S 55 W 101 vrs
- 5<sup>th</sup> mile Continuing N 30 W pass 832 vrs S 60 W  
of W Stokes S E corner and 46 vrs  
S 60 W of Pledwards N W corner at  
1900 vrs a mound of rock 2 feet high an  
Elm brs S 30 E 171 vrs another brs S 28 E  
188 vrs
- 6<sup>th</sup> mile Continuing N 30 W at 1420 vrs Farmers branch  
at 1900 vrs the 6<sup>th</sup> mound 2 ft high
- 7<sup>th</sup> mile Thence N 30 W at 70 vrs irregular timber at  
1280 vrs Bayleys Branch at 1350 vrs  
Craigs Richland Creek at 1410 vrs comes  
to the south line of the 9<sup>th</sup> Survey survey  
583 vrs South of his S E corner and 171 vrs  
N 60 E of B H Priors N W corner we passed  
46 vrs South of J Smiths S E corner  
and E H Hagans S E corner at 1900 vrs  
a mound in edge of prairie thence a  
pecan 30 in brs S 44 W 80 vrs an Elm  
20 in brs South 99 vrs -

Hill Co. Bathy Line #45 a



8th mile Thence again N 30th at 1900 vns the 8th mound 2 ft high whence an elm bro  
N 29 1/2 W 506 vns another bro N 29 W  
506 vns

9th mile Continue N 30th pass 22 vns S 60th of east line of Jacob Bycoffs survey and 300 vns N 60 E of Jm Rays S W Cor on Blundells S E corner at 1904 vns the 9th mound 2 ft high of rock and earth J D Stiers residence bro S 25 E and J K Snodgrass dwelling bro N 73 E

10th mile Thence again N 30th at 1904 vns the rock mound in high prairie whence Robert Sedwicks residence bro S 70 1/2 E

11th mile Thence again N 30th at 1905 vns a branch at 1195 vns a branch at 1900 vns the 11th mound of earth and rock.

12 mile Continuing N 30th and pass 71 vns N 60 E of A Hilleths S E corner and W D Dorays S E corner at 1420 vns Cross Mill Creek at 1904 vns the 2 mound 2 ft high and pile of white rock on the mound

13th mile Thence again N 30th at 1904 vns the 13th mound 2 ft high on high prairie whence William Ausworth residence bro S 73 W 209 vns

14 mile Thence again N 30th at 1904 vns the 14th mound in a cove of the mountain whence an elm bro N 45 1/2 W 71 vns another bro N 61 W 77 vns

15th mile Thence again N 30th at 1904 vns the 15th mile point on the south side of the



Files and Waxahachie Road this mound  
is in a beautiful Valley.

16th mile

Thence again N 30th at 1470 vis Cross  
Valley Creek 5 vis above a large Cotton-  
wood tree marked H at 1900 vis the 16th  
mile a mound 2 feet high where a mesquite  
7 in dia brs 55 3/4 in 145 vis two elms brs  
between S 31 E 330 vis we passed 854 vis  
NE of the A & Corners of the Penn and  
of the Ripley Surveys

17th mile

Thence again N 30th we passed  
over S Coaks Nth Corner and 731  
vis SE of the SE Corner B B B A  
Co survey at 1830 vis Cross Island Creek  
at 2038 vis or in all 17 miles 138 vis  
Corners the SE Corner of Johnson County a  
cedar post and rock 2 feet high with  
Initial of corner whence an elms brs  
S 30 E 235 vis another 18 in dia brs  
S 25 1/2 E 192 vis an 8 in brs S 80 W 279 vis  
B T Hills residence brs N 66 1/2 W this  
Corner is on the Penn Mungen sur-  
vey and N 30th 580 vis and N 75 E  
670 vis from this SE Corner.

At each mile point we erected a  
mound of earth or rock 2 feet high  
and planted beside are in the same  
Bearing marked thus H or E X

Live trees " " "

Variation 9° 00' E

Surveyed in the month of Decr 1881



W M Vaughan  
Sergeant representing Hill Co Tex  
W Robinson }  
O Kelland } Chain }  
W Jordan } }  
J K Snoddy } }  
} } }  
} } }

Respectfully Submitted this 7th mech 1882  
W M Vaughan

State of Texas }  
County of Hill } D Dare Dearden  
Clerk of the County  
Court of Hill County hereby certify  
that the foregoing is a true and correct  
copy of an order of the County Court  
of Hill County establishing the County  
line between Hill and Ellis Counties  
together with a plat of same as appear  
on minutes of said Court on pages  
24 - 25 - 26 & 27 -

Witness my hand and official  
seal at office in Hillsboro this  
7th mech 1882

Dare Dearden  
Clerk of Hill Co Tex

By J C Kellough  
Deputy



Hill Co. ~~1~~ Bday line

45a

Hill & Ellis Co.  
Line

Filed April 18<sup>th</sup> 1882.

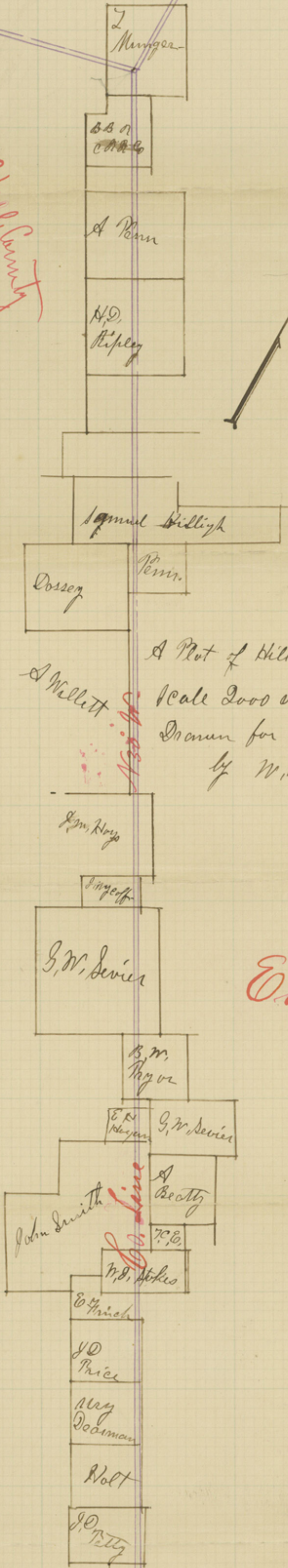
Counter 54769

H7



Johnson County

Hill County



A Plot of Hill and Ellis Co Line  
Scale 2000 or to inch.

Drawn for W.C. Walsh Am. S. L. Co.  
by W.M. Vaughan  
C.S. N.C.

Ellis County

Hill County

Navarro Co



45a

Abstract corrected  
1894 Beaumont

Rx C. 9/24/1941  
U.S.

to 250

Count 54771