

Index to Transcript

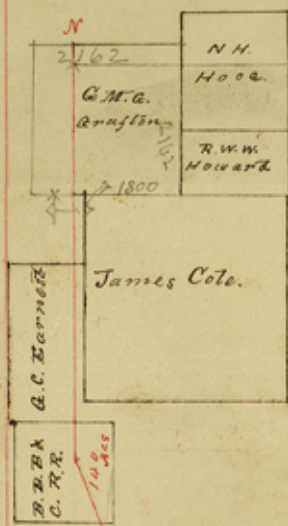
Hood and Paley Line 1-2.

Hood and Parker Line 3-7.  
(L.C. W. Partin)

Hood and Johnson Line 8-12.  
(J.R. Ransom)

Hood and Erath Line 13-18.  
(J.H. Rymann)

Counter 55019



The State of Texas Field Notes of the Survey  
 County of Hood & of the Boundary line of Hood  
 County Texas, made in obedience to and in  
 conformity with the order of the Honorable  
 Commissioners Court of said County dated  
 August 16. 1881. and in accordance with  
 an act of the Legislature of the State of Texas  
 Entitled an act establishing and proscribing  
 the manner of ascertaining the Boundaries  
 of Counties. approved April 22. 1879.

The following are the field  
 Notes, of the Boundary line of Hood County  
 from the S.E. line of Palo Pinto County, to  
 the S.W. corner of Parker County, made  
 by me in accordance with the act  
 above mentioned,

Beginning at the S.E. corner of Palo Pinto  
 County, a cedar post set three feet in the  
 ground and 2 feet high. Eight inches in  
 diameter. also a Rock marked P. C. & H. C.  
 to B.B.B. & C.R.R. 640 acre Survey 905- vrs  
 West- and 500 vrs South from the N.E.  
 cor of said Survey, also the N.E. corner  
 of Erath County. Thence North 500 vrs  
 to the North line of said Survey, and the  
 South line of George. C. Earnest 640 acre  
 Survey, and 905 vrs west of the North  
 corner of said B.B.B. & C.R.R. 640 acre Survey.  
 The S.E. corner of said Earnest Survey 905-  
 vrs Cross Day Branch 1710 vrs Cross Battle  
 Creek, 1880 vrs Cross Granbury & Palo Pinto  
 Road. 1900 vrs an Earth mound. (1<sup>st</sup> mile)  
 in the George C. Earnest 640. acre Survey.  
 Thence 3375- to the North line of the

Hood & Palo Pinto Line  
 Surveys on

The inscribed  
 figures are taken  
 from the field  
 notes of the  
 Grafton survey  
 to show the error  
 in defining  
 the N.E. cor. of  
 Hood Co.  
 The Martin sur-  
 vey begins at the  
 N.W. cor. of the  
 Hood Co.

1<sup>st</sup> mile

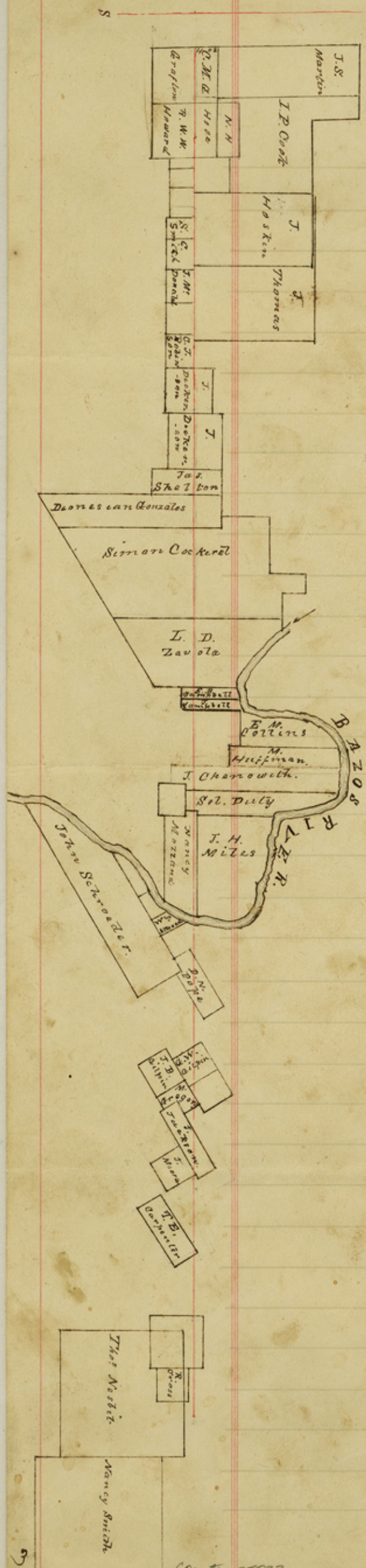
2<sup>nd</sup> mile  
3<sup>rd</sup> mile  
G. C. Earnest 640 acre Survey 180 vrs West  
of his N E corner. 3800 vrs to an Earth mound  
2<sup>nd</sup> mile. Thence 4100 vrs to the S W corner  
of G. W. G. Grafton 827. acre survey. 5700  
vrs to the third mile. an Earth mound.  
Thence 6100 vrs to the S W corner of Parker  
County and the N W corner of Hood County  
a cedar Post set in the East three feet and  
two feet high Eight-inches in diameter  
the S W corner of J S Martin survey. and 462  
vrs North of the N W corner of G. W. G. Grafton  
Survey. a rock set in the ground marked.  
H. C. P. C. a Post oak vrs North 58° 1/2  
vrs S vrs North 65° West 5 1/2 vrs.

I G. A. Rucker Surveyor appointed by  
the Commissioners Court of Hood County  
Texas. to Survey Establish and define. the  
Boundary<sup>lines</sup> of Hood County do hereby certify  
that the foregoing Field Notes are true  
and correct.

Given under my hand  
this 12. day of June 1882.  
G. A. Rucker.

Sworn to and Subscribed before me  
this 14. day of August 1882.

James Hiner clk c c c  
By T. H. Hiner Deputy.



The State of Texas  
 County of Hood  
 Field Notes  
 of the North Boundary line  
 of Hood County Texas.  
 made in obedience to &  
 in conformity with the  
 order of the Commissioners  
 Court of Hood County, dated  
 August 16, 1851. and in  
 accordance with the  
 act of the Legislature of  
 the State of Texas, entitled  
 an act establishing and pro-  
 scribing the manner of  
 ascertaining the boundaries  
 of counties. approved  
 April 22, 1859.

The following are the  
 Field Notes, of the North  
 Line of Hood County.  
 Made by me and L. G. W  
 Patton, a Surveyor appointed  
 by the County Court of Parker  
 County Texas,  
 Beginning at the NW  
 corner of Hood County  
 and the SW corner  
 of Parker County, 6100  
 vrs North of the SE cor  
 of Palo Pinto County,  
 and the SW corner of  
 J. S. Martin Survey.

422. Vrs South of the NW cor of Grafton 827 acre survey a cedar Post Set in the East 3 feet and a rock marked H.C.P.C. a Post oak, bears N 58 E. 1 1/2 vrs Do bears N 65 W 5 1/2 vrs. Thence East 1900 vrs to an Earth mound in the South line of S.P. Cook Survey, and in the East line of Said Grafton Survey, and in the West line of N.H. Hove 640 acre Survey. 462 vrs South of the NE corner of the Said Grafton Survey 860 vrs South of the NW corner of the N.H. Hove Survey,

1<sup>st</sup> mile

2<sup>nd</sup> mile

Thence East 3800 vrs and Earth mound in the South line of the Said S.P. Cook Survey. Thence East 10 vrs to the East line of the Said N.H. Hove Survey. 1041 vrs North of the SE corner 700 vrs to an Earth mound in the South line of J. Hoskins Survey.

4<sup>th</sup> mile

Thence East 13 vrs to the West line of the W.A. S. Smith 184 acre survey. 85 vrs South of his North West corner. 7600 vrs an Earth mound.

5<sup>th</sup> mile

Thence East 20 vrs to the James McDonald NW corner 9500 vrs. an Earth mound in the South line of the J. Thomas Survey

6<sup>th</sup> mile

Thence East 11400 vrs. an Earth mound in the West Noah Dickenson Survey.

8<sup>th</sup> mile

Thence East 15200 vrs. an Earth mound in the James Shelton Survey.

Thence East 15215 vrs. the West line of D. Gougeon 1280 acre survey. 1200 vrs South of the North West corner, 16460 vrs to the line of Said Survey. 1210 vrs. South

- of the North<sup>west</sup> corner. 17100 vrs. to an Earth mound in the Simon Locknel Survey on the West bank of Cotton wood creek.
- 9." Mile Thence 17130 vrs cross Cotton wood creek
- 10." Mile 19000 vrs to a rock mound. also in the Said Locknel Survey.
- 11" Mile Thence 19092. vrs the East line of Said Simon Locknel Survey. 3000 vrs North of his S E corner. 20900<sup>3</sup> an Earth and Rock mound.
- 12 Mile Thence 21150. vrs cross red bank creek Thence 22270 vrs the west line of W R Cook Survey 480. vrs North of his S W corner 22800 vrs a rock mound.
14. Mile Thence 22845 to the line of Solomon Duty Survey. 61. vrs North of his S W cor. 23650 vrs to Nancy Millard West line 104 vrs South of his N W corner. 26600. vrs to a rock mound; in Said Millard Survey.
- 15" Mile Thence East 28500. vrs an Earth mound. also in the Said Millard Survey.
16. Mile Thence East 29700 vrs to the Brazos River 29855 vrs cross the river. 29935 vrs from which the Wm Atwood 110 acre Survey S W corner Bears. North 300. vrs. 30400 to an Earth mound.
17. Mile Thence East 32300 vrs an Earth mound.
18. Mile Thence East 33758. vrs to the west line of G. W. Gilpin 160 acre Survey. 520 vrs N 30 W from his S W. corner, 34200 vrs to an Earth mound. in Said G. W. Gilpin 160 acre Survey.

- 12<sup>th</sup> Mile  
 Thence East 36065 vrs Cross Long  
 Creek. 36100. vrs. an Earth mound.  
 Thence East 36430. vrs to the North line  
 of Isaac Jackson 160 acre Survey.  
 580 vrs N60 East from the NW corner. and  
 408 vrs. N60 East. from M Gregory  
 SE corner. 37928 vrs to the East line  
 of John Moore 160 acres. Survey. 278 vrs  
 S30 East from the NE corner. 38000  
 vrs to a mound of rock.
- 20<sup>th</sup> Mile -  
 21<sup>st</sup> Mile  
 Thence East. 39900. vrs to an Earth Mound.  
 Thence East. 40210 vrs cross the Thorp  
 Springs and Fort Worth Road. 40245 -  
 vrs. the North line of T. C. Carpenter  
 320 acre Survey. 55 vrs S60 West.  
 from his NE. corner 41800 vrs  
 a rock mound, the SW. line  
 of the J. H. Calhoun 160 acre Survey vrs  
 South 20 East 418 vrs.
- 22<sup>nd</sup> mile  
 Thence East - 43426. vrs to East line of N N Popl  
 Survey 335 vrs North of his SE corner. and 13 vrs  
 South of the NW. corner of T. C. Carpenter East  
 Survey 43700 vrs an Earth mound. in the  
 Said Carpenter Survey.
- 23<sup>rd</sup> Mile.  
 Thence 44365 vrs cross the old Bellknapp  
 Road 44870 vrs to the East line of Said  
 Carpenter Survey. 18 vrs South of his NE  
 corner 45600 vrs to an Earth mound.  
 the old cross place vrs S 13 E. 900 vrs.
- 24<sup>th</sup> Mile  
 Thence 46700 vrs cross the Granbury  
 Fort Worth Road. 47500 vrs to an  
 Earth Mound.
- 25<sup>th</sup> Mile  
 Thence 47700. vrs cross Dickey Branch
- 26<sup>th</sup> Mile -  
 49400 vrs. a Rock mound on the East

Dickey Branch. Thence 494/5. vrs Cross  
Said Branch 494/90. vrs. to the N E corner  
of Hood County. a cedar post set there  
set in the ground. marked H.C. & J. C.  
the North West corner of Johnson County.  
the North East corner of the Nancy Smith  
Survey is 513 vrs South & 1150 vrs East from  
the North East corner of Said Hood  
County, and the North West corner of  
Johnson County, the mound of  
Earth and Rock made 2 feet high &  
the cedar post set in the ground  
three feet. & 2 feet "high" above ground  
and one eight inches in diameter.

I G. A. Rucker, Surveyor appointed  
by the Commissioners Court of Hood  
County Texas. to Survey Establish and define  
the Boundary line of Hood County, do hereby  
certify that the foregoing field notes  
are true and correct.

Given under my hand this  
12<sup>th</sup> day of June. 1882.

G. A. Rucker

Sworn to and subscribed before  
me this 14<sup>th</sup> day of Aug. 1882.

James Keiser clk cc & cc  
By J. H. Keiser Deputy clk



The following are the field notes of the East Boundary line of Hevood County and the West Boundary line of Johnson County. Made by me. in conjunction with J. R. Bannome. County Surveyor of Johnson County after due notice to the County Court of Said County.

Beginning at a cedar post 8 inches in diameter set 3 feet in the earth & 2 feet high. The N. E. Corner of Summerville County on the West. line of Johnson County, in the Vincents Sold Survey 940. vs. S 60 West. & 400 vs South from the N W corner of Albert Pratt Survey. Thence North. 1900 vs. a mound of Rock 2 feet high.

1<sup>st</sup> mile.

Thence at 3730. vs the Brazos River 3800. vs the Bed of the Brazos River the Second Mile.

2<sup>nd</sup> mile

Thence at 3860 vs to the West bank of the Brazos River 5630. vs to the bank of said river. again 5700 vs the bed. of the Brazos River the 3<sup>rd</sup> Mile.

3<sup>rd</sup> mile

Thence at 5760 vs Recross Said River at 6015 vs the North line of S. B. Patton 120 acre Survey. 270 vs N 60 East from his N W corner, and 560 vs S 60 W from the S. E. corner of Edward Spears Survey, at 7190 vs cross Bash's Branch at 7600 vs, the fourth Mile, a stone mound 2 feet high in the C. R. Tidell Survey.

4<sup>th</sup> mile

Thence 7856. vs the Northline of Said Tidell Survey 200 vs East of his North West corner, at 9500 vs.

5<sup>th</sup> mile

3038

1150

2254 Acc. 853 Acc.

Nancy Smith.

750 1150

2527 388 A.

S.P.R.R. Co. No. 8.

2527 388 A.

S.P.R.R. Co. No. 7

750 1150

2016

J.A.  
J.R. Collins  
Sykes

Thos Jones

357 358

A. B.  
Wadsworth

357 358

Wadsworth

J.S.  
Hull

358 359

Jesse Randall.

352 353

Bridge man.

1900

352 353

1900

Rogers

C.P.  
Muller

300

S.B.  
Puckett

300

8 P

70000

31 473

J.D.  
Dettala

31 473

603

J. R.

Tarnico

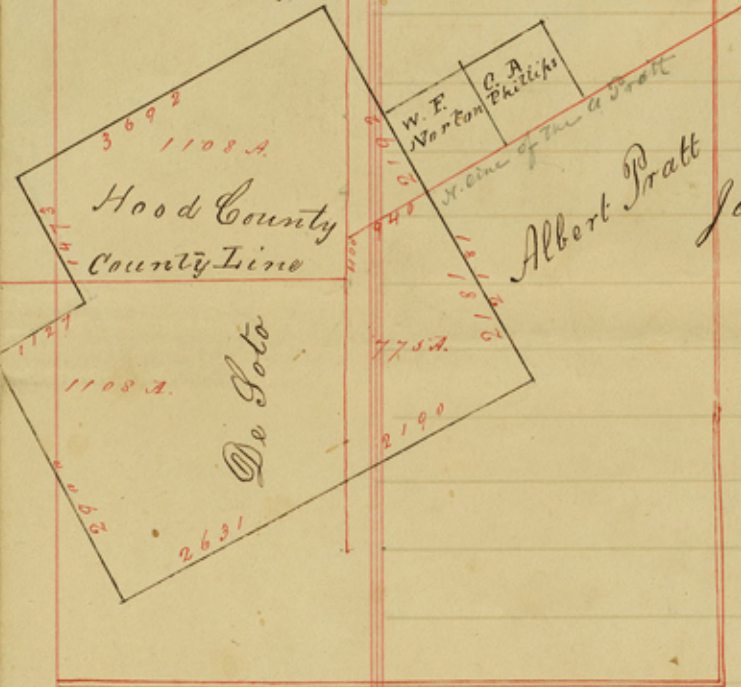
34 252

C. R.

Tisdal

34 252

A.B.  
B  
Spencer



the fifth Mile, a mound of Rock to feet high, in the Green B. Jemisons Survey. Thence 9732 vrs the South line of J. D. Bellah Survey 648 vrs west from his S.E. corner at 10548 vrs the South line of S. B. Patton 110 acre Survey. 473 vrs west from his S.E. corner, at 11400 vrs a rock mound in said Survey, the 6" Mile.

6" Mile

Thence at 12500 vrs. to Wrights-Branch at 12566. vrs the South line of G. P. Hollis Survey. 300 vrs S 60 west from his S.E. corner, at 13300 vrs the Seventh Mile. in S.B. Patton 160 acre Survey, an Earth mound 2 feet high.

7" Mile

Thence at 14160. vrs the South Line of J. Bridgman Survey. 375 vrs west from his S.E. corner. 14310 vrs. timber on Station Branch a Live oak stands on the East & an Elm on the west. Both marked J. H. at 14510. vrs, cross Station

8<sup>th</sup> Mile

Branch. at 15200 vrs. the Eighth Mile.  
an Earth Mound. 2 feet high in the said  
Bridgeman Survey.

9<sup>th</sup> Mile

Thence at 17100. vrs. an Earth Mound the  
(Ninth Mile). 2 feet high.

Thence at 18340. vrs. to the South line  
of St. Ledbetter Survey. 998 vrs. West  
from his S.E. Corner. at 18600 vrs.

Cross East Falls Creek. at 18850. vrs  
recross said Creek. Said County

line runs 15 vrs West from the Fall  
Creek Springs at 19000 vrs. the Tenth  
Mile - a Stone Set in the Earth.

10<sup>th</sup> Mile

two feet high,

Thence at 19290 vrs the North line of said  
Ledbetter & South line of the Thomas  
James Survey. 398 vrs. West of the  
N.E. corner of said Ledbetter and 552  
vrs. East - of the South West Corner  
of said James Survey. 552 vrs East  
from his N.W. corner, and the South  
line of the J.R. Sikes 80 acre Survey.  
120 vrs West of his S.E. corner, at 20634  
vrs the North line of said Sikes Survey.  
at 20900 a rock mound. in the William  
Mason Survey. the Eleventh Mile.

11<sup>th</sup> Mile

Said Mound 2 feet high.

Thence at 22650. the South line of  
S.P. RR Co's No. 7. Survey. 1150 vrs West  
from the South East corner of the same.

12<sup>th</sup> Mile

at 22800 vrs. an Earth Mound the 12<sup>th</sup> Mile

Thence at 22950. vrs. a Ravine. a  
Hackberry stands. West of the line  
marked J.H. at 24550 vrs. the South

13<sup>th</sup> Mile

line of S P R R lco No 8. Survey 11500 vs  
West West of his S E corner. at 24200  
vs a rock set in the Earth 2 feet high  
in said S P. R R lco Survey No 8 for  
the 13<sup>th</sup> Mile.

14<sup>th</sup> Mile

Thence at 26450 vs the South line of the  
Nancy Smith Survey. 11500 vs West from  
her S E corner. at 26600 vs an earth  
Mound in said Nancy Smith Survey  
the Fourteenth Mile.

15<sup>th</sup> Mile

Thence 26700 vs cross the lower  
Granbury and Fort Worth Road at  
28500. vs an earth mound in said  
Smith Survey. the Fifteenth Mile -

16<sup>th</sup> Mile

Thence at 30400 vs a rock mound two 2 feet  
high in said Nancy Smith Survey. the  
Sixteenth Mile -

Thence 30438 vs the North line of said  
Nancy Smith Survey. 11500 vs west  
of her NE corner and 3800 vs East  
from her NW corner. at <sup>x 30950</sup> 30950 vs  
the NW corner of Johnson County  
and the NE corner of Hood County,  
line of Parker County. a cedar Post 8 inches  
in diameter marked JH set three feet in  
the Ground.

J G A Rucker Surveyor appointed by  
the Comrs. Court of Hood County Texas  
to survey and Establish and define  
the Boundary lines of Hood County.  
do hereby certify that - the foregoing  
field Notes are true and correct.  
that said line was run and surveyed.

The distances given  
between the Co. line  
and the S E cor. and  
the S W cor. will  
make the N. line  
of the Smith survey  
41950 vs. while it  
is according to its  
notes 4188 vs.  
And according to  
a survey made by  
G. B. Mansone the  
distance between  
the S. E. cor. and the  
N. E. cor. of Hood  
Co. is 30821 vs in  
stead of 30950 vs.  
And according to the  
stipulation of the S E  
cor. of Hood Co. and  
the contiguous sur-  
veys North thereof to  
the N. line of N. Smith  
survey, the Co. line  
will intersect sd. N.  
line 740 vs W. from its  
N E. cor. and not  
1150 vs.  
Hence the Surveyor  
used a transit or a compass?  
It might explain the discrepancy The  
Carter 55631

x The G. B. Mansone survey  
shows a distance of 30821 vs

Hood Co. Order No 440

by me in the field and that -  
the Monks Natural and artificial  
as stated in said Notes are  
true and correct.

Given under my  
hand this 22 day of July  
AD 1882.

Sworn to and subscribed before  
me this 14<sup>th</sup> day of Aug. 1882

James Hoimer

Clerk C C H C T

By J H Hoimer Deputy



The following are the field notes of the west boundary line of Hood and the East boundary line of Crath County, made by me in conjunction with J. H. Hyman a Surveyor appointed by the Commissioners Court of Crath County.

Beginning at the NE corner of Crath County and the SE Cor of Palo Pinto County, the same being bound and established in B B B + C R W Co 640 acre Survey 905 vrs west and 500 vrs south from the North East corner of said Survey a cedar Post 8 inches in diameter set three feet in the ground, and two feet high.

Thence South 20° East 1400 vrs cross Kickapoo Creek, at 1548 vrs the South line of said B B B + C R Survey, also the North line of Jane D Lawrence 375 vrs West of the NE corner at 1900 vrs a mound of Rock two feet high in said Lawrence Survey.

Thence at 3500 vrs cross the Stephenville and Lipan Road, at 3800 vrs a mound of Earth two feet high in the J. A. Snell

3<sup>rd</sup> Mile

Upper survey. at 4658 vrs to the South line and the North line of the South Survey. and 675 vrs East of the S E & N E. Corners and at 5700 vrs to mound of Rock 2 feet high the third mile.

4<sup>th</sup> Mile

Thence at 6758 vrs to the South line of Said South J A Snell survey. and the North line of H. A. Vail survey. and 1420 vrs East of his N W. corner and 1467 vrs West of his N E corner. and 480 vrs West of the S E corner of said Snell survey. at 7600 vrs to a mound of Earth in said Vail survey. two feet high the fourth Mile -

5<sup>th</sup> Mile

Thence at 8655 vrs to the Granbury and Eastland road. at 9500 vrs a mound of Earth. the 5<sup>th</sup> Mile. to said Vail survey. Thence at 9950 vrs to the South line of Vail and the North line of Eliska David survey. 360 vrs West of the S E cor.

7<sup>th</sup> Mile

of said Vail and 1385 vrs West of the David N E cor 996. vrs East of his N W corner at 11400 a Rock Mound. Two feet high in said Survey.

Thence 13300 vrs a rock mound. in said David survey two feet high the seventh Mile. Thence 15200 vrs a rock mound two feet high in the John James survey.

9<sup>th</sup> Mile

Thence at 17100. a rock mound two feet high in said James survey. The 9<sup>th</sup> Mile -

Thence at 18619 vrs to the North line of Thomas J. Allcorn survey. 825 vrs West from the N E corner of the same and 1115 vrs East from his N W corner

(14)



The S line of  
J. James and the  
N. line of Allcorn  
do not adjoin  
each other.

10th mile

also west 2395 vrs from the S E  
Cor. of the John James Survey. East -  
2730 vrs from his S W. Cor. at 19000 vrs  
an Earth mound two feet high in the  
T. J. Allcorn Survey. the 10th mile  
on the Bank of Wolf Branch.

Thence 19010 vrs cross Wolf Branch  
at 20.240 vrs cross Sharp Springs and  
Stephensville Road. at 20.900 vrs a  
rock mound two feet high in the  
Joseph Sovereign Survey. the 11th mile.

11th mile

Thence 21213 vrs to Granbury and Stephensville  
Road at 21655 vrs the South line of  
Joseph Sovereign Survey 360 vrs East -  
from his S W Cor. and 2714 vrs West -  
from his S E Cor. also 1544 vrs from  
the N E Cor. of Jesse L. McCrocklin Survey  
at 21890 vrs cross Herminis Mill

The corner distance on the N line into north  
eye with the distance given on the  
S line of the McCrocklin Survey

12 mile

and Bluff Dale Road. 22800 vrs  
the 12 mile. an Earth mound two  
feet high from which a walnut tree  
bears South 20 East 110 vrs marked H.C.

Thence 23783 vrs. to Jesse L. McCrocklin  
Survey, <sup>the South line</sup> and the North line of the  
Moses O. Diamond Survey, 1191 vrs East  
from the S W Cor. of J. L. McCrocklin Survey  
and 709 vrs West from his S E corner.  
and 41 vrs East from the N W Cor. of  
the Moses O. Diamond Survey, 1860 vrs  
West from his N E Cor. at 24700 vrs  
an Earth mound. two feet high in the  
Moses O. Diamond Survey.

Thence at 25250 vrs cross Plauzy  
Creek. 25911 vrs to the South line

The call for the N line of Moses O. Diamond  
Survey is erroneous as of begin's 1150 vrs E  
from McCrocklin's S W. Cor. And if the above  
distance of 1540 vrs from McCrocklin's N E Cor. to the  
Co. line is correct and the part of McCrocklin's  
is 1900 vrs then the Co. line is 2022 in distance 2128 vrs  
instead of 2153 vrs. 848 vrs. W from McCrocklin's S E Cor.  
instead of 709 vrs.

over

11

of said Moses B Diamond Survey  
 872 vs East of his S W corner. and  
 1028 vs West of his S E corner also  
 428 vs west of John Gilley's N E  
 Cor. at 26400 vs an Earth mound  
 in said Gilley Survey two feet high.  
 Thence at 26770 vs cross Baker creek  
 27311 vs to the South line of E E Bakers  
 Survey. 93 vs East of his South West Cor.  
 and 667 vs West from his South East  
 Cor. at 28068 vs to the North line of the  
 John H Mooney Survey, 9573 vs East  
 from his North West Cor. and 1847 vs  
 west from his North East Cor. at 28570  
 vs an Earth mound two feet high the  
 Fifteenth Mile.  
 Thence 29881 vs the South line of  
 said Mooney Survey 976 vs East from  
 his South West corner. and 1224 vs  
 West from his S W corner 30400 vs  
 a stone mound. the 16" Mile  
 Thence 20748 vs to the North line of the  
 David Blankenship Survey 95 vs East  
 of his N W Cor. and 9187 vs West from  
 his N.E. corner. 31918 vs to the South  
 line of said Blankenship and the  
 North line of W. J. Richardson Survey  
 410 vs West from the S W corner of the  
 said Blankenship <sup>East</sup> the N W corner of  
 the said Richardson Survey, and 510 vs  
 West of the said Blankenship and  
 Richardson corner. 32380 vs an  
 Earth mound in the W J Richards on  
 Survey the same being the 17" Mile.

14" Mile

The discrepancy between Adams's N. line and the Erskine's S. line is 812c more which the  
 lat. between the sd. lines is 4537m. This makes the same 4852 vs. a difference of 315 vs. miles  
 The difference in Sep. 91250 vs. and so on to the S. W. corner of the County.

15" Mile

16" Mile

17" Mile

(16) Counted 55034

15. 1000

*[Faint, illegible handwriting throughout the page]*

10. 1000

10. 1000

10. 1000

~~3650~~  
~~1850~~  
~~1793~~

Counter 55037

Thence 32955-ors to the South line of said Richardson survey and also the North line of the James Robinson Survey 180rs west of his NE cor. also the SE cor. of the said Richardson Survey at 29800 ors to the lower Granbury and Stephenville Road 32600rs Cross Sycamore Creek 3752 ors the South line of Jesse Brooks Survey 135-ors East from his SW corner and 537 ors West from his SE corner, at 24200 ors an East and rock mound for the 18" Mile

18" Mile

Thence 36100 ors to the North line of the Nineteenth Mile -

19" Mile

thence at 36550 ors the North line of John H Bull Survey S 60 W 170 ors from his NE corner and 780 ors N 60 East from his NW corner at 37710 ors To Pony Creek at 38000 ors the 20" mile at mound of Rock,

20" Mile

847 1/2  
 26550  
 1961  
 26550  
 1961

Thence at 38470 ors the SW cor. of Hood County and the NW cor. of the County of Sommersville on the East line of Crook County a large mound of rock,

I G. A. Rucker. Surveyor appointed and qualified to establish define and Survey the Boundary lines of Hood County Texas do hereby certify that the foregoing field Notes are true and correct that the Survey was made in the field and that all the marks natural and

artificial as stated in the foregoing  
field notes are true and correct.

Witness my hand this 22<sup>nd</sup> day  
of July 1882

G. A. Rucker

Sworn to and subscribed before me  
this 14<sup>th</sup> day of August 1882

James Heiner c.c. H.C. T.  
By J. H. Heiner Deputy

The State of Texas  
County of Hood & I James Heiner  
Clerk of the County Court in and  
for said County. do hereby certify  
that the above and foregoing 18 Pages  
contain a true and correct copy of  
the Plats and Field Notes of the North  
East & West boundary lines of said  
Hood County. Texas as appears of record  
in my office in minutes of County  
Court Book B. Pages 35 to 48. inclusive.



To certify which I hereto set  
my hand and affix the Seal  
of said Court at office in  
Granbury this 5<sup>th</sup> day of Sept 1882

James Heiner c.c. H.C. T.  
By J. H. Heiner Deputy

20/

Hood Co. Bdry. line

Hood County.

Hood Co. lines  
between Hood &  
Cala Pinto  
Parker  
Johnson &  
Ernst

Filed Sept 11/84  
Walsh  
Com

Counter 55040

