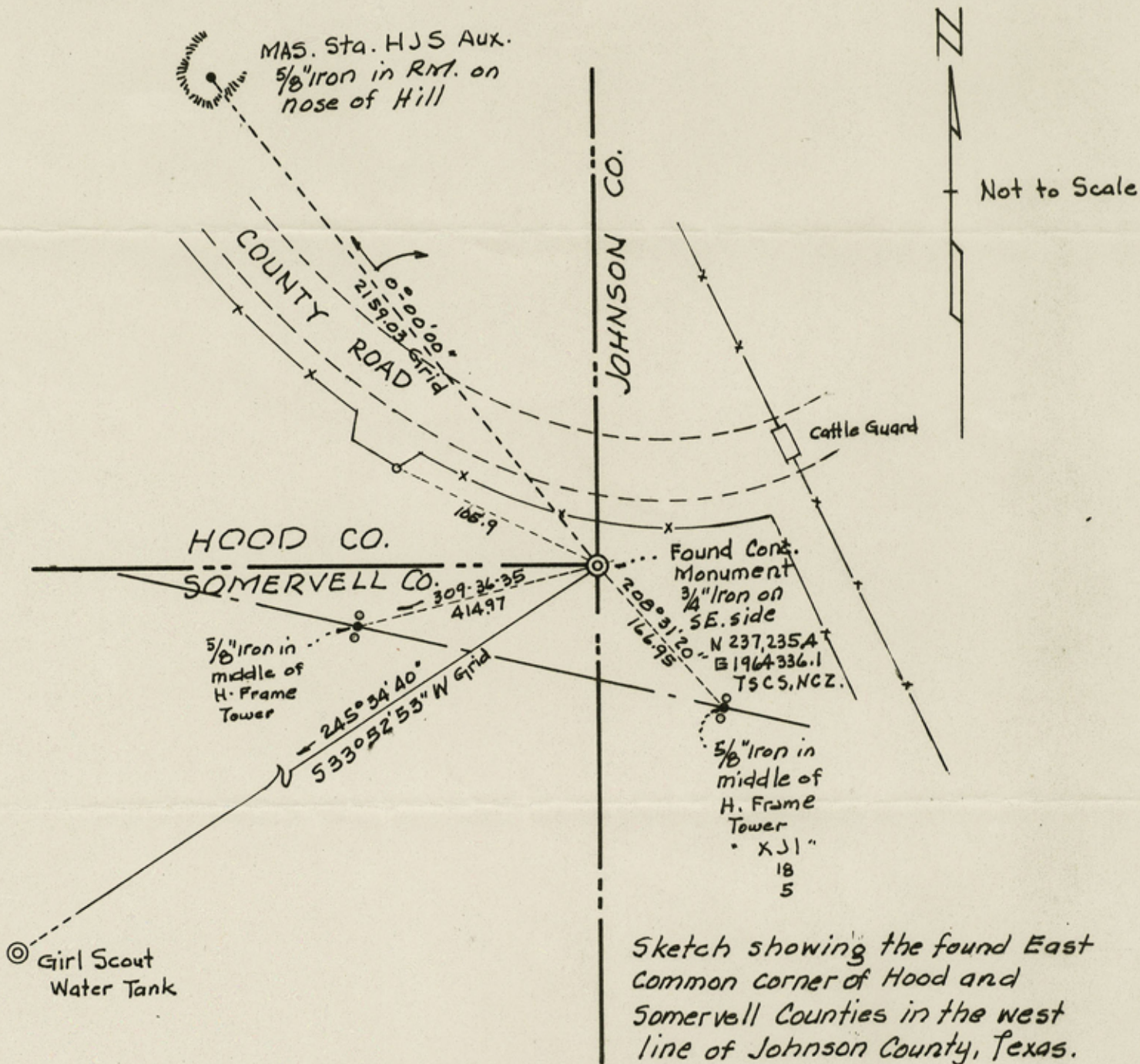




W. F. GUNN, Surveying and  
Aerial Mapping Co.  
Box 448 1-817-897-3910  
Nemo, Texas 76070

2 1/4 miles west along  
FM 200 from Nemo  
Post Office

Affiliated with:  
Metropolitan Aerial Surveys  
Ft. Worth, Texas

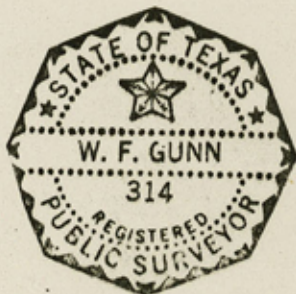


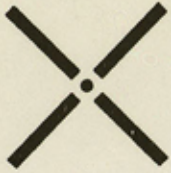
Sketch showing the found East  
Common corner of Hood and  
Somervell Counties in the west  
line of Johnson County, Texas.

SURVEYED: May 21, 1987

*W. F. Gunn*

Registered Public Surveyor  
No 314





# Metropolitan Aerial Surveys

Box 2293  
1225 Fairmount Avenue 817-336-4381  
Fort Worth, Texas 76101

W. F. Gunn  
Ken Smith

June 10, 1987

RECEIVED  
JUN 13 1987  
GENERAL LAND OFFICE

Mr. Garry Mauro, Commissioner  
General Land Office  
Austin, Texas 78701

Dear Mr. Mauro:

A few weeks ago I found the common east corner of Somervell and Hood Counties in the west line of Johnson County and I tied this corner into the Texas State Coordinate System, North Central Zone.

I also set reference irons as shown on the sketch.

The monument was cast in concrete using a 6" stone pipe as a form. This monument had been hit and the top scraped off apparently during cleaning operations. It was flush with the ground in tall weeds and if it weren't for the metal of the stone pipe reacting on the metal detector I would likely never have found it.

I thought that you might like to have a copy of this sketch for your files.

Very truly yours,

W. F. Gunn

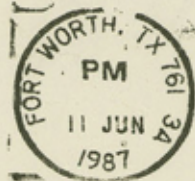
RECEIVED  
JUN 15 1987  
GENERAL LAND OFFICE

WFG/cjr

*Metropolitan Aerial Surveys*

1225 Fairmount - P.O. Box 2293

Fort Worth, Texas 76101



RECEIVED

JUN 13 1987

GENERAL LAND OFFICE

Mr. Garry Mauro, Commissioner  
General Land Office  
Austin, Texas 78701

Counter 55043

