

38
The State of Texas ,
County of Howard ,

I , T.M.Lightfoot County Surveyor of Howard County ,
Texas , hereby certify that I have recorded the foregoing
Field Notes and attached plat as the East Boundary line of
Howard County , Texas , same being recorded in Vol. 2 , pages
72,73,74,75 and 76 in Surveyors Records in Howard County ,
Texas .

Witness my hand this the 21st day of February A.D.1922

T. M. Lightfoot
County Surveyor , Howard County , Texas .

4

The State of Texas, :
County of Mitchell. : I, Frank Lupton, County Surveyor of Mitchell County, Texas, hereby certify that I have recorded the foregoing filed notes and attached plat of the West boundary line of Mitchell County, Texas, same being recorded in Volume D pages 243, 244, 245, 246, 247, 248 -249 in surveyor's Records in Mitchell County, Texas.

Witness my hand this 18th day of March, A. D. 1922.

Frank Lupton

County Surveyor, Howard County, Texas.

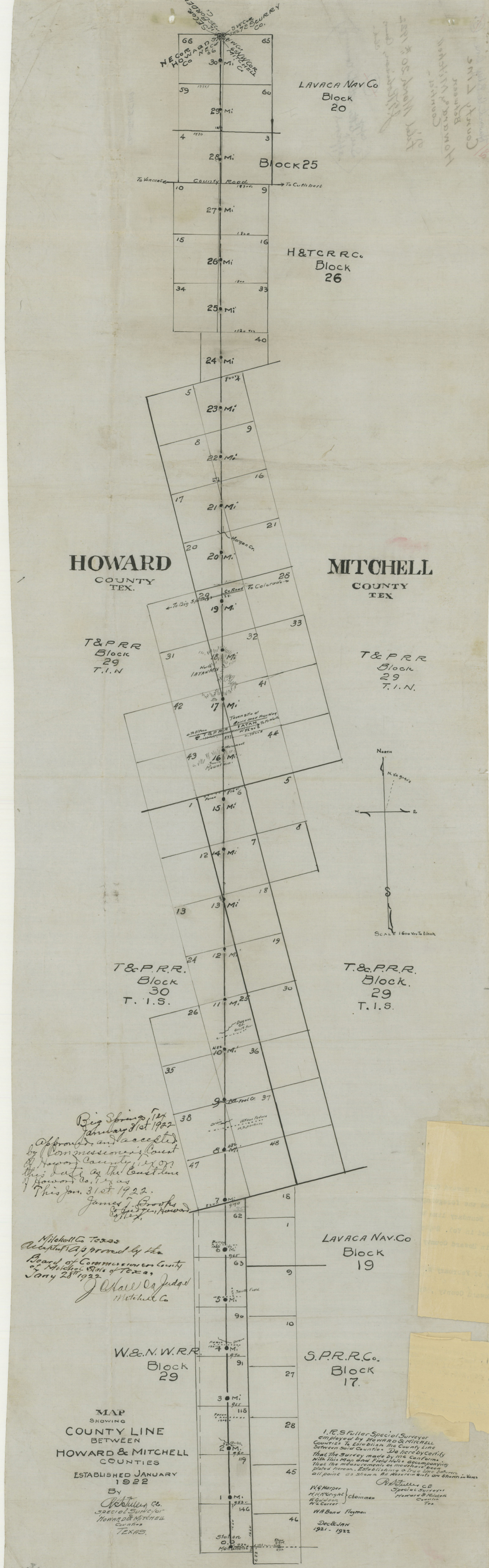
4

County 55127

WEEN

237 Quick.

I. R. S Fuller Special Surveyor
employed by HOWARD & MITCHELL
COUNTIES To Establish the



HOWARD
COUNTY
TEX.

MITCHELL
COUNTY
TEX.

T&P.R.R.
Block
29
T.I.N.

T&P.R.R.
Block
29
T.I.N.

T.&P.R.R.
Block
30
T.I.S.

T.&P.R.R.
Block
29
T.I.S.

Big Springs, Tex
January 31st 1922
Approved and accepted
by Commissioner's Court
of Howard County, Texas on
this date as the East line
of Howard Co. Tex as
This Jan. 31st 1922.
James J. Brooks
County Judge, Howard
County, Tex.

Mitchell Co Texas
Accepted & approved by the
Board of Commissioners County
of Mitchell State of Texas,
Jan'y 28th 1922
J. Hall, Co. Judge
Mitchell Co.

MAP
SHOWING
COUNTY LINE
BETWEEN
HOWARD & MITCHELL
COUNTIES
ESTABLISHED JANUARY
1922
By
I.P.S. Fuller, Co.
Special Surveyor
Howard & Mitchell
Counties
TEXAS.

I.P.S. Fuller, Special Surveyor
employed by HOWARD & MITCHELL
COUNTIES to establish the County Line
between said Counties. Do hereby certify
that the Survey made by me conforms
with this Map and Field Notes accompanying
that the measurements on monuments being
plotted thereon. Establishing a true line between
all points as shown on this Map and that the same are shown in plan.

W. Harper
H. H. Knight } Chairmen
H. G. Johnson
W. C. Carter }
W. B. Bond, Flagmen

I.P.S. Fuller, Co.
Special Surveyor
Howard & Mitchell
Counties
Tex.

Declared
1921 - 1922

NOTE All distances given in Varas

the State of Texas
County of Howard
I, I.P.S. Fuller, Special Surveyor
employed by Howard & Mitchell
Counties, Texas, do hereby certify
that the Survey made by me conforms
with this Map and Field Notes
accompanying that the measurements
on monuments being plotted thereon
establishing a true line between
all points as shown on this Map
and that the same are shown in plan.

the State of Texas
County of Howard
I, I.P.S. Fuller, Special Surveyor
employed by Howard & Mitchell
Counties, Texas, do hereby certify
that the Survey made by me conforms
with this Map and Field Notes
accompanying that the measurements
on monuments being plotted thereon
establishing a true line between
all points as shown on this Map
and that the same are shown in plan.

31, 22
County 55 128

4

