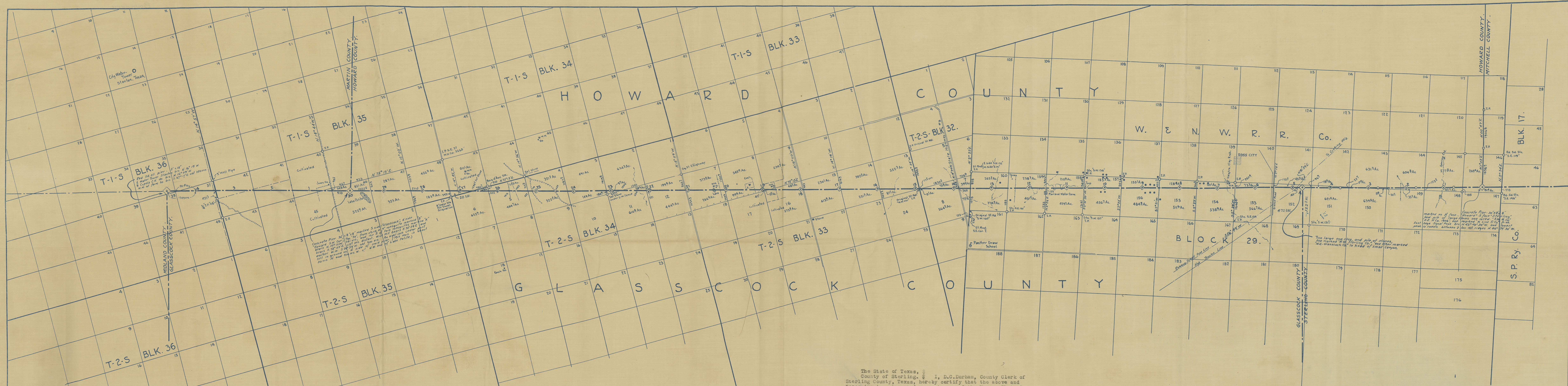


The State of Texas, )  
County of Howard. ) I, J. I. Prichard, Clerk of the County Court, in and  
forssaid County and State, hereby certify that the attached Plat is  
a true and correct Copy of the map or plat of the South line of  
Howard County, and parts of North Line-Sterling and Glasscock Counties,  
Texas as same appears of record in the Minutes of the County Court  
of Howard County, Texas, in Volume No. 2, Page 550-551.

Given under my hand and seal of office, this 19th. day of July, A.D. 1928.

*J. I. Prichard*  
County Clerk, Howard County, Texas.



THE STATE OF TEXAS )  
COUNTY OF GLASSCOCK ) I, Joe C. Galverley, County Clerk of  
Glasscock County, Texas, do hereby certify that the above and  
foregoing is a true and correct copy of the map or Plat of the  
South Line Howard County, and Parts of North Line - Sterling  
and Glasscock Counties, Texas, as same appears of record in the  
Minutes of the County Court of Glasscock County, Texas, in Volume 1,  
page 178.  
Witness my hand and seal of office at office in Garden City,  
Texas, this 17th day of July, A. D. 1928.  
Joe C. Galverley  
County Clerk, Glasscock County, Texas.  
By *Dea. Heathley* Deputy.

*Filed in General Land Office July 20th 1928*  
*J. D. Robinson*  
*Clk.*

The State of Texas,  
County of Sterling. I, D.C. Durham, County Clerk of  
Sterling County, Texas, hereby certify that the above and  
foregoing is a true and correct copy of the map or Plat of  
the South Line Howard County and Parts of North Line - Sterling  
and Glasscock Counties, Texas, as same appears of record  
in the Minutes of the County Court of Sterling County, Texas,  
in Volume 2, page 121.

Witness my hand and seal of office at office in Sterling  
City, Texas, this July 17th, A. D. 1928.

*D. C. Durham* County Clerk,  
Sterling County, Texas.

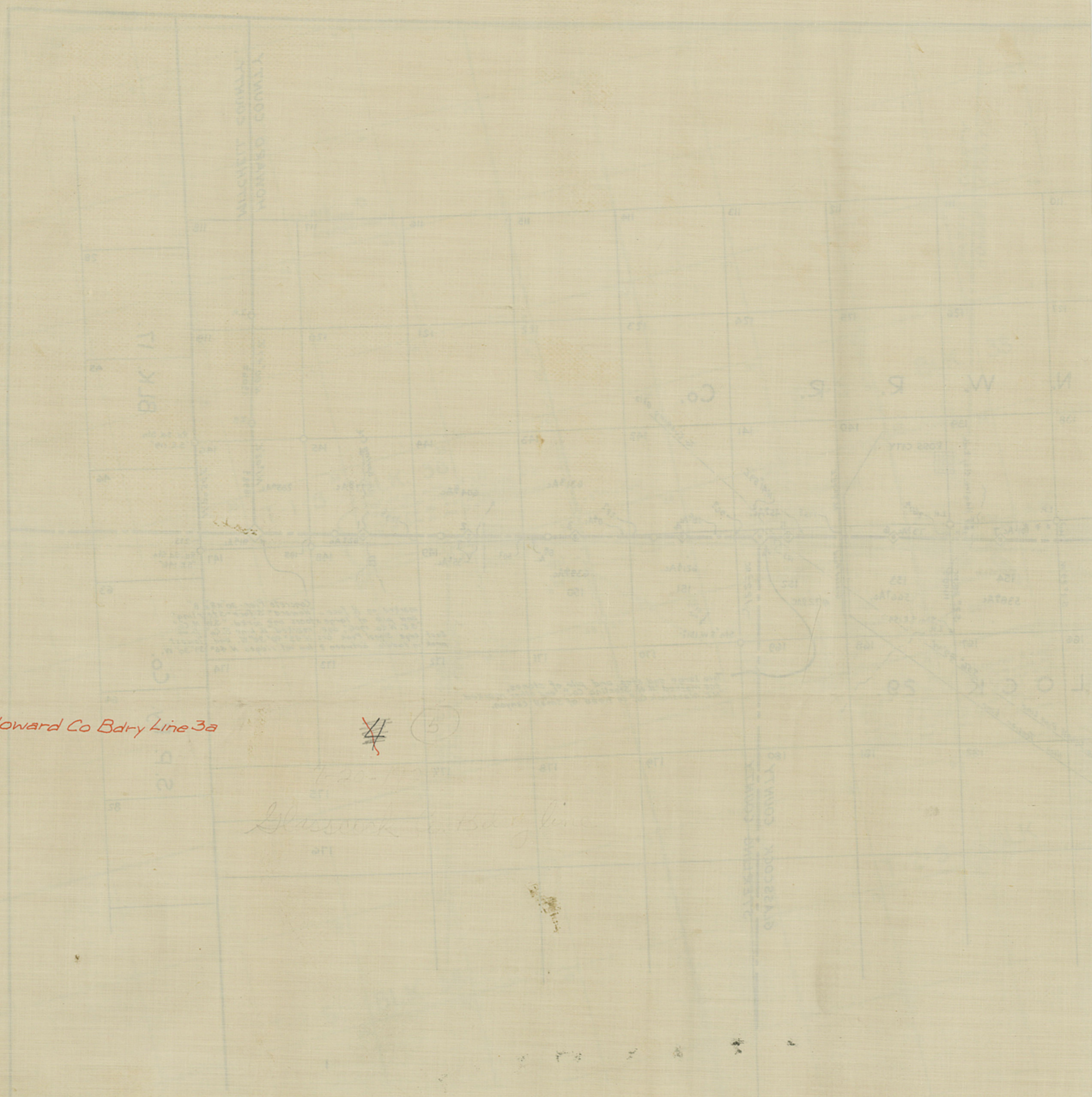
- CERTIFICATE -

We, R.T. Bucy and W.F. Kellis do hereby certify that  
this plat is true and correctly shows our work in the  
field as ordered by the Honorable County Courts; Said  
R.T. Bucy representing Howard County and W.F. Kellis repre-  
senting Sterling and Glasscock Counties, Texas. Surveyed  
May and June 1928.

*R.T. Bucy*  
*W.F. Kellis*  
Licensed Land Surveyors of Texas.

PLAT of SOUTH LINE HOWARD COUNTY  
and  
PARTS of NORTH LINE - STERLING and GLASSCOCK COUNTIES  
TEXAS

Scale 1" = 1500 Yards ..... Surveyed May & June 1928.  
All courses hereon refer to TRUE MERIDIAN.  
All numbered miles marked by concrete piers - 30"x8"x8".



Howard Co Bdry Line 3a

~~5~~ (5)

Glasscock Co Bdry line

PLAT OF SOUTH LINE HOWARD COUNTY  
and  
PARTS OF NORTH LINE - STERLING and GLASSCOCK COUNTIES  
TEXAS

Scale 1" = 1200 Yards  
Surveyed by J. H. Jones 1922  
All courses herein refer to True Meridian  
All numbered notes & marks of course plus 2012-13