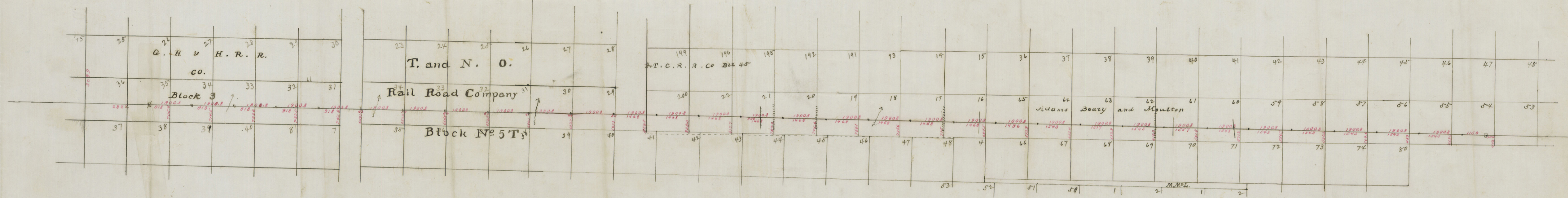


00122562



I, E. V. Hedgecock Special Surveyor for Hutchinson County  
do hereby certify that this is a true and correct map of work  
done by me on the ground on the North boundary line of Hutchinson  
County Texas  
E. V. Hedgecock  
Special Surveyor  
Hutchinson Co. Tex.

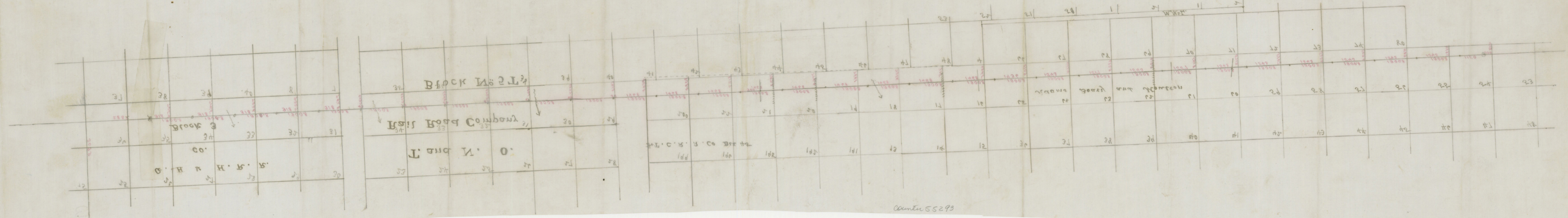
Var. used 10° 30' East  
Scale 2000000. to 1 inch

pub. & printed by  
Hutchinson Co. Bond

Hutchinson Co. Bdry.  
line ③

Nov 17 1891  
Nov 10 1891

Handwritten notes in Russian, including the word "Граница" (boundary) and "Линия" (line).



Count 55293

Hutchinson Co. Adm. Lms #1

SURVEY No.

THE STATE OF TEXAS, }  
Hutchinson County. }

FIELD NOTES of a survey of the \_\_\_\_\_ acres of land  
North Boundary line of Hutch-  
inson County Texas, made by  
in accordance with an Act of the Legislature  
order of the Commissioner's Court  
of Texas, entitled "An Act making the office of  
County Surveyor made on the  
County Surveyor an office of record," approved  
11th day of February 1903  
March 30th, 1881. The following are field notes  
of a resurvey of \_\_\_\_\_  
original survey granted  
to \_\_\_\_\_  
by virtue of Certificate No. \_\_\_\_\_  
and based upon remaining evidences of original  
survey. Said survey is \_\_\_\_\_

SCALE, 2000 Varas per inch.

Variation 10° 35' East

No. \_\_\_\_\_ in Block No. \_\_\_\_\_ in \_\_\_\_\_  
County, Texas, situated on the waters of \_\_\_\_\_ a tributary  
of \_\_\_\_\_ River, about \_\_\_\_\_ miles of \_\_\_\_\_

Beginning at a stone set in the ground for the S.E. Corner of Sherman County, from which a stone marked "Moore, Sherman" on west side bro. North 747 vrs. and the N.E. corner of survey No. 75 in Block 3 T. & N.O. R.R. Co. surveys bro. North 3099 vrs. and West 2882 vrs.

Thence East at 918 vrs. pass 705.4 vrs. North from the S.E. corner of survey No. 35 Block 3 S.H. & A.R.R. Co. surveys at 1900.8 vrs. set a bisdare post five feet long (3 feet in the ground) marked H on North and South sides. Thence East at 918 vrs. pass 714.5 vrs. North from the S.E. corner of survey No. 34 in said Block 3 at 1750 vrs. cross cañon (N.E.) at 1900.8 vrs. set bisdare post five feet long (3 ft. in ground) marked H on North and South sides.

Thence East at 918 vrs. pass 723.6 vrs. North from the S.E. corner of survey No. 33 in said Block 3 at 1900.8 vrs. set bisdare post five feet long (3 ft. in ground) marked H on the North and South sides

Thence East at 918 vrs. pass 732.7 vrs. North from the S.E. corner of survey No. 32 in said Block 3 at 1900.8 vrs. set bisdare post five feet long (3 ft. in ground) marked H on North and South sides

Thence East at 918 vrs. pass 741.8 vrs. North from the S.E. corner of survey No. 31 in said Block 3 at 1900.8 vrs. set bisdare post five feet long (3 ft. in ground) marked H on North and South sides

Thence East at 43 vrs. pass 649.7 vrs. North from the S.W. corner of survey No. 34 in Block 5 T. & N.O. R.R. Co. surveys at 350 vrs. cross cañon (N.E.) at 1900.8 vrs. set bisdare post five feet long (3 ft. in ground) marked H on North and South sides

Thence East at 59 vrs. pass 657.3 vrs. North from the S.W. corner of survey No. 33 in said Block 5 T at 1900.8 vrs. set bisdare post five feet long (3 ft. in ground) marked H on North and South sides

Thence East at 36 vrs. pass 666.9 vrs. North from the S.W. corner of survey No. 32 in said Block 5 T at 1900.8 vrs. set bisdare post five feet long (3 ft. in ground) marked H on North and South sides.

Thence East at 40 vrs. pass 672.5 vrs. North from the S.W. corner of survey No. 31 in said Block 5 T at 1900.8 vrs. set bisdare post five feet long (3 ft. in ground) marked H on North and South sides

Thence East at 41 vrs. pass 680.1 vrs. North from the S.W. corner of survey No. 30 in said Block 5 T at 300 vrs. cross south prong of Paladuro creek (N.) at 1900.8 vrs. set bisdare post five feet long (3 ft. in ground) marked H on North and South sides.

Thence East at 64 vrs. pass 687.7 vrs. North from the S.W. corner of survey No. 29 in said Block 5 T at 1900.8 vrs. set bisdare post five feet long (3 ft. in ground) marked H on North and South sides

Thence East at 56 vrs. pass 695.3 vrs. North from the S.E. corner of said survey No. 29 at 1468 vrs. pass 858.8 vrs. North from the S.W. corner of survey No. 200 Block 45 T. & S.G. R.R. Co. surveys as established by H.B. Spiller Dist. Surveyor Wheeler Land District in July 1890 at 1900.8 vrs. set bisdare post five feet long (3 ft. in ground) marked H on North and South sides

Thence East at 1468 vrs. pass 838.3 vrs. North from the S.E. corner of said survey No. 200 at 1900.8 vrs. set bisdare post five feet long (3 ft. in ground) marked H on North and South sides

Thence East at 1468 vrs. pass 817.7 vrs. North from the S.E. corner of survey No. 22 S.H. & M.G. R.R. Co. surveys at 1900.8 vrs. set bisdare post five feet long (3 ft. in ground) marked H on North and South sides. Thence East at 900 vrs. cross a road at 1468 vrs. pass 797.7 vrs. North from the S.E. corner of survey No. 21 S.H. & M.G. R.R. Co. surveys at 1900.8 vrs. set bisdare post five feet long (3 ft. in ground) marked H on North and South sides

Thence East at 1468 vrs. pass 776.6 vrs. North from the S.E. corner of survey No. 20 said S.H. & M.G. R.R. Co. surveys at 1900.8 vrs. set a bisdare post five feet long (3 ft. in ground) marked H on North and South sides. Thence East at 1468 vrs. pass 756.1 vrs. North from the S.E. corner of survey No. 19 S.H. & M.G. R.R. Co. surveys at 1900.8 vrs. set bisdare post five feet long (3 ft. in ground) marked H on North and South sides.

Thence East at 1468 vrs. pass 735.6 vrs. North from the S.E. corner of survey No. 18 S.H. & M.G. R.R. Co. surveys at 1900.8 vrs.

Hutchinson Co. Bdry. Line #1

1 set Boisdare post five feet long (3 ft. in ground) marked  
 2 H on North and South sides, Thence East at 1468 vrs. pass  
 3 715 vrs. North from the S.E. corner of survey No. 17 S.A. &  
 4 M. & R.R. Co. surveys at 1900.8 vrs. set Boisdare post five  
 5 feet long (3 ft. in ground) marked H on North and South sides  
 6 Thence East at 1468 vrs. pass 694.5 vrs. North from the S.E.  
 7 corner of survey No. 16 S.A. & M. & R.R. Co. surveys at 1900.8 vrs  
 8 set Boisdare post five feet long (3 ft. in ground) marked  
 9 H on North and South sides, Thence East at 1496 vrs. pass  
 10 673.9 vrs. North from the S.E. corner of survey No. 65 S. & M. & R.  
 11 surveys Block R at 1900.8 vrs. set Boisdare post five feet  
 12 long (3 ft. in ground) marked H on North and South sides,  
 13 Thence East at 1543 vrs. pass 653.4 vrs. North from the  
 14 S.E. corner of survey No. 64 in said Block R. at 1900.8  
 15 vrs. set Boisdare post five feet long (3 ft. in ground)  
 16 marked H on North and South sides,  
 17 Thence East at 1517 vrs. pass 632.9 vrs. North from the S.E. corner  
 18 of survey No. 63 in said Block R at 1900.8 vrs. set Boisdare  
 19 post five feet long (3 ft. in ground) marked H on North  
 20 and South sides, Thence East at 1543 vrs. pass 612.3  
 21 vrs. North from the S.E. corner of survey No. 62 in said  
 22 Block R at 1900.8 vrs. set Boisdare post five feet long (3 ft.  
 23 in ground) marked H on North and South sides,  
 24 Thence East at 1557 vrs. pass 591.8 vrs. North from the S.E.  
 25 corner of survey No. 61 in said Block R at 1900.8 vrs. set  
 26 Boisdare post five feet long (3 ft. in ground) marked H  
 27 on North and South sides, Thence East at 1543 vrs. pass  
 28 571.2 vrs. North from the S.E. corner of survey No. 60 in  
 29 in said Block R. at 1900.8 vrs. set Boisdare post five  
 30 feet long (3 ft. in ground) marked H on North and South sides  
 31 Thence East at 1543 vrs. pass 550.7 vrs. North from the  
 32 S.E. corner of survey No. 59 in said Block R at 1900.8 vrs.  
 set Boisdare post five feet long (3 ft. in ground) marked H on  
 North and South sides.

Thence East at 1543 vrs. pass 530.2 vrs. North from the  
 S.E. corner of survey No. 58 in said Block R at 1900.8 vrs  
 set Boisdare post five feet long (3 ft. in ground) marked H  
 on North and South sides, Thence East at 1543 vrs. pass 509.6 vrs.  
 North from the S.E. corner of survey No. 57 in said Block  
 R at 1900.8 vrs. set Boisdare post five feet long (3 ft. in ground)  
 marked H on North and South sides,  
 Thence East at 1543 vrs. pass 489 vrs. North from the S.E.  
 corner of survey No. 56 in said Block R at 1900.8 vrs.  
 set Cedar post five feet long (3 ft. in ground) marked  
 H on North and South sides -  
 Thence East at 1543 vrs. pass 468.5 vrs. North from the  
 S.E. corner of survey No. 55 in said Block R at 1900.8  
 vrs. set Cedar post five feet long (3 ft. in ground) marked  
 H on North and South sides.  
 Thence East 1150 vrs. an Iron pipe marked N.W. N.E. S.E. S.W.  
 R H. H. O.  
 the same being the North West corner of Roberts County, from which  
 a round knob brs. S. 74 E. and another brs. S. 8 E. and center of bank of  
 small cation brs. S. 28 W. about 500 vrs. and the S.E. corner of survey  
 No. 54 in said Block R brs. East 394 vrs. and the place of beginning  
 South 448 vrs

Bearings marked Surveyed the 11 to 20th day of Aug. 1903

A.M. Brown } Chain  
 Robert Archer } Carriers.

I, E.V. Hedgecocke Special Surveyor for Hutchinson  
 County, do hereby certify that the foregoing Survey was made in the field according to law, and that the  
 limits, boundaries and corners, with the marks, natural and artificial, are truly described in the foregoing  
 Plat and Field Notes.  
 E.V. Hedgecocke  
 Special Surveyor for Hutchinson County, Texas.

I, \_\_\_\_\_ Surveyor of \_\_\_\_\_  
 County, do hereby certify, that I have examined the foregoing Plat and Field Notes, and find them correct,  
 and that they are recorded in my office, in Book \_\_\_\_\_, No. \_\_\_\_\_, Page \_\_\_\_\_  
 Surveyor of \_\_\_\_\_ County, Texas.

Hutchinson Co. Bdry. line

No. ①

FIELD NOTES OF A SURVEY  
 MADE FOR  
 Hutchinson County  
 8-1903

COUNTER 55295

CHAPTER LXVI.  
 AN ACT MAKING THE OFFICE OF COUNTY SURVEYOR  
 AN OFFICE OF RECORD.

SECTION 1. Be it enacted by the Legislature of the State  
 of Texas, That the Surveyors of the several counties of this  
 State shall record in a well bound book all the Surveys in  
 the County or district for which he was elected, with the  
 plats thereof, that he may make, whether private or official,  
 and that such record shall be open to the inspection of the  
 public; and for which service the Surveyor may charge, in  
 addition to the fees now allowed by law for field work,  
 twenty cents per hundred words for such record.

SEC. 2. Certified copies of such record, under the official  
 signature of the County Surveyor, may be used in evidence  
 in any of the Courts of this State.

SEC. 3. The Commissioners' Courts are herewith re-  
 quired to furnish the County Surveyors of their respective  
 Counties, on the requisition of such Surveyors, a book or  
 books of sufficient capacity to contain a record of all the  
 Surveys provided for in this Act.

Approved March 30, A. D. 1881.  
 Takes effect ninety days after adjournment.

✓ (3)  
Northern Bdy. Line.

Hutchinson County

Jan. 22 1904.

May be returned when replaced  
by field notes of a legal survey.  
6-2-04 Hammett