

Hon. Commissioners court of Orion
County.

Gentlemen,

Pursuant to an
order of your Hon. court made at
its regular February term 1894 to
survey and locate the South boundary
line of Orion County & John Gibbons
County survey of said county together
with John Mass, County Surveyor of
Crockett County and W. G. Taylor, County
Surveyor of Tom Green County met per-
suant to notice on the 20th day of March
1894 at South East cor. of Orion County
proceeded as follows to-wit

Beginning at the South West cor.
of Tom Green County which is also
the South East cor. of Orion County
a stone monument mark'd on the
north side S. W. cor. T. G. Co. & S. E. cor.
I Co. Mark'd on South side N. Line S. Co.
33 Miles 1672 Pcs. from which R. O. 30
in dia brs North 87° East 348 Pcs Mark'd
T. G. Co. R. O. 10 in dia brs North 26³/₄
West 55 Pcs Mark'd "I" Co. Thence West
at 662 Pcs cross west line of Survey
No. 1198 T. J. Ry Co 969 Pcs South of its
N. W. cor. An old stone md. At 2128 Pcs
set stone in ground mark'd on South
side 35 M. on north side I Co. R. 1 M.
Thence West at 444 Pcs cross west
line of Survey No. 1197, T. J. Ry. Co, 969 Pcs
South of its North West cor. An old
stone at 1900 Pcs set stone mark'd on
north side I Co R. 2 M. on South side
S Co. R. 36 M.

Orion Co. Policy. List #2

Thence West at 440 Pcs, across west
line of Survey No. 1203 T. C. Ry. Co, 1104 Pcs
South of its North West cor. an old
stone md, from which a stone md
on crest of hill bcs South 166 Pcs, at
1900 Pcs set stone mkd on north side
I. Co. L. 3 M. on South side S. Co. L. 37 M.

Thence West at 440 Pcs, across west line
of Survey No. 1138, T. C. + S. F. Ry. Co, 1104 Pcs
South of its North West cor. at 1900 Pcs
stone mkd, I. Co. L. 4 M. and S. Co. L. 38 M.

Thence West at 467 Pcs across west line
of Survey No. 25 H. E. + W. T. Ry. Co, 720 Pcs South
of its North West cor. an old stone md
from which a D. C. bcs South $80\frac{1}{4}$ West
a high hill bcs north at 1860 Pcs cross
road, at 1900 Pcs set stone mkd, on north
side I. Co. L. 5 M. on South side S. Co. L. 39 M.

Thence West at 467 Pcs across west line
of Survey No. 26, H. E. + W. T. Ry. Co, 720 Pcs
South of its North West cor. at 860 Pcs
over North point of hill at 1900 Pcs
stone mkd, on north side I. Co. L. 6 M.
on South side S. Co. L. 40 M.

Thence West at 430 Pcs, across west
line of Survey No. 29, H. E. + W. T. Ry. Co,
730 Pcs South of its North West cor. ^{at 1900 Pcs} set
stone mkd on north side I. Co. L. 7 M. and
on South S. Co. L. 41 M.

Thence West at 442 Pcs, across west line
of Survey No. 1236, T. C. Ry. Co, 1170 Pcs North
of its South West cor. a stone md, from
which a D. C. 4 in dia bcs North $6\frac{1}{2}$ East
36 Pcs D. C. bcs North $33\frac{1}{4}$ East 33 Pcs, at 1900
Pcs set stone mkd on North side I. Co. L. 8 M.

And on South side S. Co. L. 42. M.,
Thence West at 442 Pcs, cross west line
of Survey No. 1239, T. C. Ry. Co., 60 Pcs South of its
North West cor, an old stone md, at 1900 Pcs
set stone mnd on north side I Co L. 9. M.,
and on South side S. Co. L. 43. M.,

Thence West at 1043 Pcs, cross West line
of Survey No. 1240 T. C. Ry. Co., 68 Pcs South of
its N. W. cor, an old stone md, from which
A. C. C., 14 in dia brs north 47 West 121 Pcs
L. C., 12 in dia brs South 7 1/2 West 184 Pcs this
point is also, on the East line of Survey No. 5.
Bek, 5.3, of State University land, 780 Pcs South
of its North East, cor. a large stone monum-
ent, at 1900 Pcs set stone mnd, I Co. L. 10 M.,
and on South side S. Co. L. 44 M.

Thence West, at 1074 Pcs, cross west line
of Survey No. 5. Bek No 5.3 State University land
780 Pcs South of its North West, cor, a stone md
at 1900 Pcs set stone mnd on north side I
Co L. 11. M., on South side S. Co. L. 45 M.,

Thence West at 1104 Pcs, cross west line
of Survey No. 4, of same block, 780 Pcs South
of its North West cor, a stone md, at 1900 Pcs
set stone mnd, I Co. L. 12 M., on the north side
and on the South side S. Co. L. 46 M.,

Thence West at 1134 Pcs, cross west line
of Survey No. 3, same block 780 Pcs South of its
North West cor, at 1900 Pcs set stone mnd
on north side I Co L. 13 M., on South side S. Co. L. 47 M.

Thence West at 1164 Pcs cross west line of
Survey No 2, same Bek, 780 Pcs South of a stone
md its north West cor, at 1900 Pcs set stone
mnd on North side I Co. L. 14 M., on South side
S. Co. L. 48 M., Thence West at 1206 Pcs, cross
East line of Survey No. 5. Bek No 5.2, State

University Land 780^{ms} South of its North East cor, of said Block 52, A large stone monument on top of hill, at 1900^{ms} set stone mkd I, Co, L, 15, M, on north side, & S, Co, L, 49, M, on south side

Thence West at 1233^{ms}, cross west line of Survey No 5, Block ^{no 52 State University Land} at 1900^{ms} made st monument from N. W. Co. 800^{ms} South of its North West cor, of Schleicher County and North East cor of Crockett County, from which a mesq, ^{is} in dia brs, north 37 $\frac{1}{2}$ East 380^{ms}, mkd, X, the center of round hill brs, north 12° East stone slab, mkd, N. E. cor, Co, Co, another stone slab mkd N. W. cor, S, Co, stone slab on north side mkd, I Co L, 16, M,

Thence West at 1260^{ms}, cross west line of Survey No. 4, of same Block, 800^{ms} South of its North West cor, set stone mkd on north side I Co L, 17, M, on south side Co, Co, L, 1 M,

Thence West 1287^{ms}, cross west line of Survey No. 3, same BLK, 800^{ms} South of its North West cor, a stone mkd at 1900^{ms} set stone mkd, I, Co, L, 18, M on north side Co, Co, L, 2, M,

Thence West at 1314^{ms}, cross west line of Survey No 2, of same BLK 800^{ms} South of its North West cor, a stone mkd, at 1900^{ms} set stone, mkd on north side I Co, L, 19, M, on south side Co, Co, L, 3 M,

Thence West at 1341^{ms} cross East line of Survey No 5, BLK no 38 State University Land 800^{ms} South of its North East cor, a stone mkd. at 1900^{ms}, set stone mkd on north side I, Co, L, 20, M, on south side Co, Co, L, 4 M,

Thence West at 1368^{ms} cross west line

103

4

of said survey no. 6; 810 pms South of its north west cor. at 1900 pms set stone mkd on north side I Co L 21 M, on South side C, Co, L 5 M.

Thence West at 1395 pms, cross west line of survey no 4 of same Bk, 810 pms South of its north west cor. at 1900 pms set stone mkd on north side I Co, L 22 M and on the South side C, Co, 6, M.

Thence West at 1422 pms, cross west line of survey No. 3, in same Bk, 810 pms South of its north west cor. at 1900 pms set stone mkd, II Co, L 23 M, on north side and on South side C, Co, L 7 M.

Thence West at 1449 pms, cross west line of survey no. 2 of same Bk, 810 pms South of its north west cor. at 1900 pms set stone mkd I, Co, L 24 M, on north side and on South side C, Co, L 8 M.

Thence West at 1476 pms cross East line of survey No 18, Bk, no. 40 State University land 810 pms South of its north East cor. a stone mkd. at 1900 pms set stone mkd on north side I Co L 25 M, on South side C Co, 9, M.

Thence West at 1503 pms cross west line of said survey no 18, of same Bk 815 pms South of its north west cor. at 1900 pms set stone mkd, on north side I Co, L 26 M, on the South side C Co, 10 M.

Thence West at 1530 pms cross west line of survey no. 17, of same Bk, 815 pms South of its north west cor. at 1900 pms set stone mkd on north side 27 M, and on South side 11 M.

Thence West at 1557 pms, cross

Iron Co Bk, line #2

West line of Survey No 16, of same blk
815^{ms} South of its North West cor.
At 1900^{ms} set stone mnd on north side
I Co. L 28 N, on South side Co. L, 12 N
Thence West at 1584^{ms} cross west
line of Survey No. 15, same blk 815^{ms}
south of its north west cor. at 1900^{ms}
set stone mnd II Co. L 29 N, on north side
and on South side Co. L, 13 N.

Thence West at 1611^{ms} cross west
line of Survey No. 14, same blk. 815^{ms}
south of its north west cor. at 1900^{ms}
set stone mnd on north side II Co. L, 30 N,
aged on South side Co. L, 14 N.

Thence West at 1638^{ms} cross east line
of Survey No. 21, Blk 43, State University
land 815^{ms} South of its North east
cor. a stone mnd. At 1900^{ms} set stone
mnd on north side I Co. L, 31 N, and
on South side Co. L, 15 N.

Thence West at 1665^{ms} cross west line
of said Survey No. 21, of same blk, 825^{ms}
South of its north west cor. at 1900^{ms}
set stone in ground mnd, on north
side I Co. L, 32 N, on South side Co. L, 16 N.

Thence West at 1692^{ms} cross west
line of Survey No. 22, of same blk, 825^{ms}
South of its North West cor. at 1900^{ms}
set stone mnd. mnd II Co. L 33 N, on
North side & mnd on South side Co. L, 17 N.

Thence West 354^{ms} made a stone monument
in Mesquite flat for South West cor. of
Orion Co. & a South East cor of Tom Green
County from which a mesq 10 in dia
has North 43½ West 50^{ms}, a mesq.

XP

7

10 in dia brs north 3 1/2 West 42 Mc
 of mags 12 in dia brs, North 2 6 1/2 East
 101 Mc, stone slab on east side MKd
 & M. cor. I Co. 33M, 38.7 Mc, stone slab
 MKd, on West side S. E. cor T. G. Co.
 stone slab MKd, on South side E. Co. E

Variation. 9° 56'
 March 20" 1894
 Chairman. *[unclear]*
 J. N. Macon }
 J. J. Dodson } Ch.

John G. Gibbons
 County Surveyor of
 Irion County Texas

U. G. Taylor
 County Surveyor of
 Tom Green County Texas

Joe Gross
 County Surveyor of
 Brackett County Texas.

1624 CERTIFICATE OF RECORD.

For sale by Geo. D. Barnard & Co., Prs., St. Louis. CL-SL. E Class 6

THE STATE OF TEXAS, }
 County of *Irion* }
 in and for said County, do hereby certify that the foregoing *I, E. C. McDonald*, County Clerk
 the *Instrument* dated
 the *18* day of *April* 18*94*, with its certificate of authentication, was filed for Record
 in my office, on the *21st* day of *April* A. D. 1894, at *10* o'clock *P*. M., and
 duly recorded the *17th* day of *May* A. D. 1894, at *10* o'clock *M*. M.,
 in the *Common Court* Records of said County, in Vol. *One* on Pages *260, 264*
 Witness my hand and the seal of the County Court of said County, at office in *Sherwood*
 Texas, the day and year last above written.
E. C. McDonald
 Clerk County Court, *Irion* County.

1624 CERTIFICATE OF RECORD.

For sale by Geo. D. Barnard & Co., Prs., St. Louis. CL-SL. E Class 6

THE STATE OF TEXAS, }
 County of *Irion* }
 in and for said County, do hereby certify that the foregoing *I, E. C. McDonald*, County Clerk
 the *Instrument* dated
 the *18* day of *April* 18*94*, with its certificate of authentication, was filed for Record
 in my office, on the *17th* day of *May* A. D. 1894, at *4:30* o'clock *P*. M., and
 duly recorded the *22nd* day of *May* A. D. 1894, at *9:35* o'clock *A*. M.,
 in the *Deccor* Records of said County, in Vol. *3* on Page *5 112 to 117*
 Witness my hand and the seal of the County Court of said County, at office in *Sherwood*
 Texas, the day and year last above written.
E. C. McDonald
 Clerk County Court, *Irion* County.

By _____ Deputy _____

Yo 6
 County 55333

Filed in Genl Land
office

May 25th 1894



Examined & approved

May 25/94

G. H. Bennett

342 IRION CO. LINE
FILES.

Line between
Irion T. Schleichner
and Crockett, Co.

Filed for Record

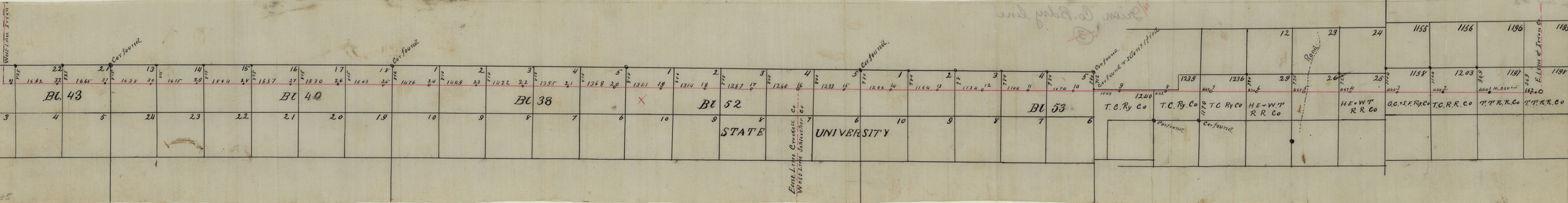
May 17th 1894 at
4 30. O'clock P.M.
E. C. McDonald
County Clerk

Filed Apr 21 st 94

E. C. McDonald
County Clerk

108

and part of main line



Count 55335

342

Line between Iron Schleicher & Wehler Co

1 South line of } Commissioners Court
2 Orion County } Orion County, Texas,
3 no. 342 } May Term, 1894,

4
5 May 15th 1894,

6 On this day came on to be consid-
7 ed, the report of John G. Billows, et al,
8 relative to the location, and establish-
9 ment, of the boundary line, between the
10 counties of Orion, Lovelock and Ochlocknee,
11 same being the south boundary line
12 of Orion County,

13 It appearing to the court, upon an
14 inspection of the act of Legislature, crea-
15 ting Orion County, that the West bound-
16 ary line, of said Orion County, is to be
17 determined after the establishment of
18 the South East corner of Glascock County,
19 Therefore, it is ordered by the court, up-
20 on motion duly made, that so much
21 of said report, as relates to running
22 said line, be, and the same is approv-
23 ed, but the court refuses to accept, as a
24 permanent, South West corner, of Orion
25 County, the corner referred to in said
26 report, and that portion of said report,
27 be, and the same is, rejected,

28
29 The State of Texas }
30 County of Orion } O. E. C. McDonald,
31 Clerk of the County Court, in, and for,
32 County, and State of said, do hereby

Orion Co. Bdry. line # 2

5-15-1894
Orion County
Orion Co. Bdry line (2)

Action of Com^{rs} Court
rejecting the S W cor
of Orion Co until the
S E cor. of Glasscock
Co is definitely and
permanently estab-
lished.

certify, that above and foregoing is
a true and correct copy, of the order
of the Commissioners Court, of Orion County,
relating to location of the border line
any line of said County, as the same
appears, on the minutes of said Court,
Vol. One, pages 240 to 264.

On Testimony, wheny, witness
my honor, and the case of the
County Court of said County, at
office, in Charcoal Twp, this
22nd day of May 1894.
E. G. McConrad

County Clerk.

Orion County, Oron.