

<sup>3/</sup> Irion Co. Bdry line (5)  
COUNTY BOUNDARY

IRION & REAGAN

Does not appear that proceedings  
were in accordance with Art. 799  
et. seq. R.S. 1895; but this copy is de-  
posited as information to Land Office.

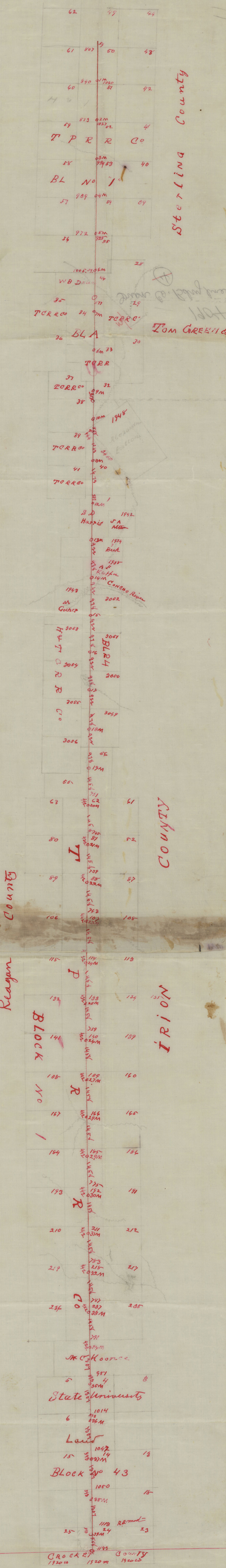
April 11<sup>th</sup> 1905.

John J. Ferrell  
Comr

Platted on map, April 11<sup>th</sup> 1905.

Hunnicutt





We the undersigned Surveyors do hereby certify that the foregoing is a true and correct sketch of the boundary line between the Counties of Reagon, Irion, part of Tom Green and Sterling as surveyed by us Sept 5th to the 11th 1904

H. B. Tarver  
Surveyor for Reagon County

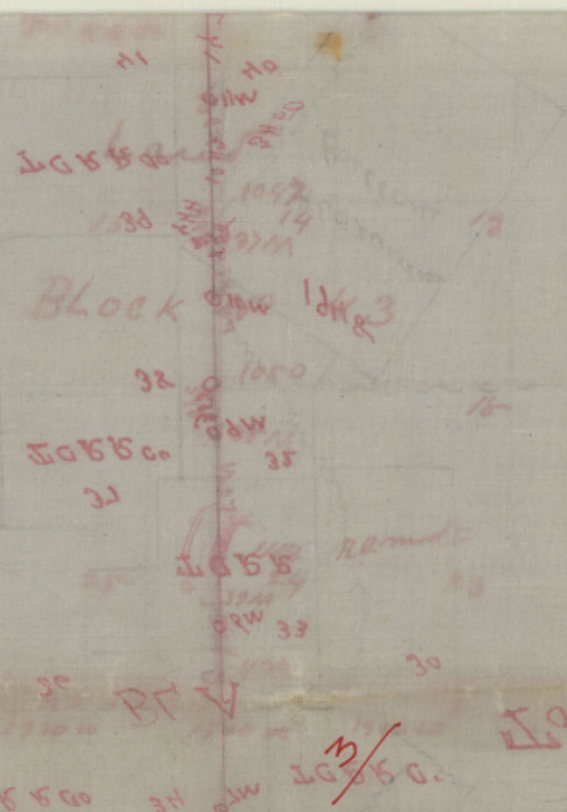
J. M. Corson  
Surveyor for Irion County

The State of Texas }  
County of Irion } I W.W. Corson County Clerk  
in and for Irion County, Texas, do hereby certify that the above sketch is a true and correct copy of the boundary line between Irion & Reagon Counties, as surveyed by H. B. Tarver and J. M. Corson, Surveyors, as the same appears of Record in my office in the minutes of the Commissioners Court of Irion County, in Book 2 of pages 91 & 92

Witness my hand and seal of said Court this 30th day of March A.D. 1905

W. W. Corson County Clerk  
Irion County Texas





1904

Iron Co. Boundary line

That the foregoing is a true and correct sketch of the boundary line between the Counties of Reagan, Iron, part of Tom Green and interests as surveyed by me Sept 5th to the 11th 1904

H. B. Tarver

Surveyor for Reagan County

J. M. Carson

Surveyor for Iron County

The State of Texas }  
 County of Iron } I, W. W. Carson, County Clerk,  
 in and for Iron County, Texas, do hereby  
 certify that the above sketch is a true and  
 correct copy of the boundary line between  
 Iron + Reagan Counties, as surveyed by  
 H. B. Tarver and J. M. Carson, Surveyors,  
 as the same appears of Record in my  
 office in the minutes of the Commissioners  
 Court of Iron County, in Book 2 of  
 pages 91 & 92

Witness my hand and Seal of said  
 Court this 30th day of March A.D. 1904

W. W. Carson County Clerk  
 Iron County Texas

Thw State of Texas §  
County of Irion §

In Commissioner's Court, Feb. Term, 1905.

On the 17th day of Feb. 1905, it was ordered by the Court that the field notes as filed herein by J.M. Carson, Surveyor to the West boundary line to Irion County be and the same are approved and further order that said field notes be now spread upon the minutes of this Court as follows, to-wit:-

P  
Couniler 55342



1.

To The Honorable Commissioners' Court of Irion County, Texas.

In obedience to an order of your Honorable body issued 11th. day of Aug. 1904, appointing me to survey the west boundary line of Irion County; and to begin at the South West corner of Midland Co. on Sept. 1st. 1904. I herewith respectfully submit the following report of the West line of Irion County, passing through Surveys &c as shown on sketch herewith filed. I proceeded to the S.E. Corner of Midland County and was met by T.H. Seay appointed for Glasscock and H.B. Tarver representing Reagan County, by appointment of Reagan County Commissioners' Court. Thence we surveyed past 30 ~~mi~~ miles (the report of the field notes of which, and sketch, have been filed with Reagan County Court) and established the N.E. Corner of Reagan County, the same being the S.E. Corner of Glasscock Co. as follows: Set a large <sup>line</sup> ~~stone~~ of stone rock, five feet long, in the ground marked as follows:   
S.E. | N.E. |  
| Cor. | Cor. | on the west side.  
| G. Co. | R. Co. |


And on the east side STERLING CO LINE from which a mesquite 8 in. dia. brs ~~is~~ N. 44 W. 56 7/10 vrs. a double mesquite brs N. 89° 10' West, 223 vrs. Observation on Polaris at this corner 10° 18' East This corner is East 807 vrs. and North 59 vrs. from the S.W. Cor. of Survey No. 49, Blk. No. 2, T. & P. R. R. Co. Thence South at 59 vrs. cross the North line of Survey No. 50 T. & P. R. R. Co. Blk 2. 807 vrs East from its N.W. Cor. at 1900 vrs.

At 1 mile set a rock in the ground marked on the west side R. Co. L. 1 M. and on the East side S. Co. L. Thence continuing South at 1900 vrs. at 2 miles set a rock in the ground marked on West side R. Co. L. 2 M. and on the East side S. Co. L. whence a mesquite 6 in. dia. brs South 10° E 73 vrs. Thence S. at 1850 vrs. cross a creek. Course S.E. at 1900 vrs. At three miles set a rock in Indian Creek Valley marked on the E. side S. Co. L. On the West side R. Co. L. 3 M. At 410 vrs. cross the 7D pasture fence at 1900 vrs. at 4 miles set rock in ground marked on west side R. Co. L. 4 M. on East side S. Co. L., At four miles and 1820 vrs. cross a creek (general course N. & S.) At 5 miles set rock in the ground marked on the west side R. Co. L. 5 M. and on the East side S. Co. L.



(on a hill) At 1826 vrs cross a creek, (Course N.W.) At 6 miles set a rock in Valley (80 vrs W. of creek) marked on west side R.Co. L.6 M. on the east side S.Co.L. Mesquite 6' brs S.85E. 8 1/2 vrs At 6 miles and 59 vrs cross the South line of Sur. No.55, Blk.2, T.P.R.R.Co. <sup>1005</sup> 105 vrs E. from its S.W. Cor. At 1285 vrs a point 577 vrs west from the N.E. Cor. of Sur.No.29, T.C.R.R.Co. ((mark a rock S.W. Co. S.Co.) At 1132 vrs cross the S. line of Sur.No.46 in name of W.B. Bean at 1707 vrs cross the N. line of Sur.No.34, T.C.R.R.Co. 577 vrs W. from its N.E. Cor. a rock mound. At 7 miles set a rock marked on the West side R.Co. 7 M. On E. side T.G.Co.L. On W. foot of hill in E. side of Valley. At 8 M. set rock in ground marked on W. side R.Co. L.8 M. on E. side T.G.Co.L. At 780 vrs cross Lone Joe road course N.50° E. At 940 vrs cross Indian Creek, continuing S. (through thick timber) at 1320 vrs cross Corall Creek, at 1653 vrs cross the N. line of Sur.No.32 T.C.R.R.Co. Blk.A. 238 vrs E. from a rock md, the N.W. Cor. of No.32, At 9 M. set a rock in ground marked on W. side R.Co. L. 9 M. and on the E. side T.G.Co.L. in thick mesquite flat, 20 vrs W. from a narrow deep pond; whence a mesquite 6' in dia marked ⊗ brs S.25 3/4 W. 33 vrs A do marked ⊗ brs N. 34 1/4 W 31 vrs. do 6' in dia brs S.37 1/2 E. 19 vrs. At 9 M and 88 vrs center of the pond course S.W. and N.E. at 388 vrs put a large rock in ground marked ⊗ on East side N.W. Cor. I.Co. for N.W. Cor. of Irion Co. At 1300 vrs cross fence; at 1720 vrs cross fence, -at 10 miles set rock in ground, on the N. bank of Corall Creek marked on the W. side R.Co. L. 10 M. On E. side I.Co. L. , whence a mesquite 7' in dia brs W.7 in. a do 8' brs N.86 W. 10 in. At 20 vrs S. bank of creek. At 72 vrs cross the N.W. line of A.E. Patton Survey No.1948, 451 vrs N.55° E. from its N.W. Cor. At 857 vrs cross west-<sup>line</sup> li of said A.E. Patton Sur., 644 vrs S. 35° E from its N.W. Cor. at 1900 vrs. At 11 M set rock in ground marked on W. side R.Co. L. 11 M. and on the E. side I.Co. L. (put on top of a hill) At 11 miles and 1312 vrs cross road, course E. & W. , at 1332 vrs a point, whence Dickson's house is E.350 vrs., at 1673 vrs cross the S. line of Sur. No.40 T.C.R.R.Co. 237 vrs E. of a rock md, made for its S.W. Cor.



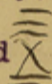
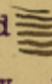
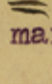
At 12 M set a rock in the ground marked on W.side R.Co.L. 12 M  
 On E.side I.Co.L. On the S.D.Harris Sur.No.1. in mesquite flat at  
 13 miles set rock in ground marked on W.side R.Co.L. and-en---  
 13 M. On the E.side I.Co.L. At 922 vrs cross the N.line of No.1938  
 A.F.Kupper Survey 335 vrs E. of a rock md. the N.W.Cor of Sur No.  
 1938, at 1800 vrs cross the San Angelo and Stiles Road, set rock in  
 the ground marked Co.Line on N.side of road, whence the most Southern  
 S.W.Cor. of Sur.No.1, S.D.Harris is 1479 vrs W. and 689 vrs S. (a  
 stone md.) At 14 miles set rock in ground in mesquite valley  
 marked on west side R.Co.L. 14 M. On E.side I.Co.L. at 14 miles  
 and 640 vrs cross Centralia Creek or Middle Concho River River  
 marked trees on both sides  . At 15 miles set rock in ground on  
 the N.side of high hill near top marked R.Co.L. 15 M. on W.side  
 and I.Co.L. on E.side. At 16 miles set rock in ground marked on  
 the W.side R.Co.L. 16 M. on the E. side I.Co.L. in prairie.  
 At 17 miles set a rock in the ground in the E.end of a lake  
 marked on W.side R.Co.L. 17 M. on E.side I.Co.L. At 17 miles and  
 922 vrs cross the N.line of Sur.No.3049--335 vrs E. of its N.W.Cor  
 a rock Md. At 18 Miles set a rock in the ground in valley marked  
 on W.side R.Co.L. 18 M. on the E.side I.Co.L. At 1360 vrs cross a  
 road, course E. and W. At 19 Miles set a rock in ground marked on  
 W.side R.Co.L. 19 M. on the East side I.Co.L. At 19 miles and 240  
 vrs a point, whence a rock set in ground marked S.E.Cor. 3056 hrs  
 S.88 3/4 W. 337 vrs. At 1440 vrs pass 63 vrs East of the N.W.Cor  
 of Sur.No.56 a rock marked N.W.Cor. 56. At 1458 vrs pass 63 vrs E.  
 of S.W.cor. of said No. 56, T.P.R.R.Co. Blk.1 At 20 miles a rock  
 set in ground marked on W.side R.Co.L. 20 M. on E.side I Co.L. At  
 20 miles and 1450 vrs pass 200 vrs East of a windmill. At 21 miles  
 set a rock in ground marked on W.side R.Co.L. 21 M. On the East side  
 side I?Co.L. close to hill side. At 540 vrs cross Bull pasture  
 North fence ; at 1458 vrs cross the S.line of Survey No.81 Blk.No  
 1 T.P.R.R.Co. 739 vrs W. from its S.E.Cor. a rock set in ground  
 marked S.E.Cor. Blk. No. 1-TP 81. At 22 miles set a rock in ground  
 marked on the W.side R.Co.L. 22 M. on the E.side I.Co.L. in valley  
 At 23 miles a rock set in the ground marked on the W.side R.Co.L.  
 23 M. on the E.side I.Co.L.



4

At 23 miles and 400 vrs cross a drain course East and West about 400 vrs west of a large lake. At 24 miles set a rock in the ground in prairie marked on the W.side R.Co.L. 24 M. On the E.side I.Co.L. At 24 miles and 489 vrs cross Sherwood and Stiles road (Mail Line) set rock on N.side marked Co.LINE. At 592 vrs cross Big Lake road at 25 miles set a rock in the flat marked on the west side R.Co.L. 25 M. On the E.side I.Co.L. At 25 miles and 1458 vrs cross the S.line of Sur.No.133 Blk.No.1, T.P.R.R.Co. 759 vrs W.from a rock marked N.W.cor.139. At 26 miles set rock in ground marked on W.side R.Co.L.26 M. On the E.side I.Co.L. At 920 vrs pass 100 vrs W. of a round point of mountain. At 1720 vrs pass on E.side of another side of mountain. At 27 miles set a rock in the Rincone marked on the W.side R.Co.L. 27 M. On the E.side I.Co.L. on side of mountain. At 570 vrs made a rock Md on top of mountain 100 vrs W.of its east point whence the -S Ranch house brs N.38 3/4 E. at 820 vrs cross a fence course east and west. At 28 miles set a rock in ground marked as usual at 28 miles and 45 vrs cross crk course E.& W. At 29 miles set rock in ground marked on W.side R.Co.L.29 M.On E.side I.Co.L. At 30 miles set a rock in ground marked on W.side R.Co.L. 30 M. On E.side I.Co.L. At 1280 vrs cross Fayette Tankersley's fence, course East and West. At 31 miles set rock in prairie marked as usual; at 32 miles set rock in prairie marked on W.side R.Co.L. 32 M. On E.side I.Co.L. At 33 miles set a rock in ground marked on west side R.Co.L.33 M. On the East side I.Co.L. said rock is 50 vrs North 59 1/2 W. from F.Tankersley's shallow well and windmill in draw. At 1458 vrs cross the S.line of Sur.No 237, Blk No.1, T.P.R.R.Co. 791 vrs W.from its S.E.Cor. At 34 miles set a rock in valley marked on W.side R.Co.L.34 M. on E.side I.Co.L. At 1307 vrs cross Rucker's North fence on the N.line of Sur.No 4, University land Blk No/43 and on S.line of Sur.in name of M.C. Koonce(Made rock pile under fence). At 35 miles set a rock in ground marked on W.side R.Co.L.35 M. On E.side I.Co.L. At 903 vrs cross Big Lake road, course E.& W. set rock on S.side marked Co.L. Line At 960 vrs cross a branch, course S.E.& N.W. At 36 miles set a rock in a branch in swag marked on W.side R.Co.L.36 M. On the E.side I.Co.L. whence the N.E.Cor of Sur.No.7 University land brs



North 593 vrs and E.1014 vrs (an old stone mound on ground). At 37 miles set rock in ground marked on W.side "R.Co.L.37" On E.side I.Co.L. (in prairie). At 38 miles set rock in ground marked on W side R.Co.L. 38 M. On E.side I.Co.L., at 600 vrs cross the west side of McGuire's tank 40 vrs west from windmill, and 150 vrs E.fr from his house. At 1307 vrs cross South line of Survey No.17 University land, blk No.43, -1113 vrs west from a rock mound made f for the N.W.Cor. of Sur.No.23 & S.E.Cor 17 same block. At 39 miles set a rock in the ground marked on the west side R.Co.L.39 M. On the E.side I.Co.L.; at 39 miles and 588 vrs set a large rock in the ground 4 feet high, marked on the west side S.E.COR.R.CO. and on t the E.side S.W.COR I.CO. Whence a mesquite 12 in dia brs S.50 E. 1 153 vrs marked  a do 10 in dia marked  brs N.49 E.81 1/2 vrs-- a do 8 in dia marked  brs N.29 3/4 W. 130 vrs.Said rock is 1181 vrs South and 1113 West from an old rock mound made for the N.E.Co corner of survey No.24 State University Land Blk No.43, and is 731 vrs west from a rock set in the ground marked on South side C.Co L.18 M. On N.side T.G.Co.L.

We, the undersigned Surveyors do hereby certify that the foregoing is a true and correct report of a boundary line between the Counties of Reagan and Irion as surveyed by us, <sup>Sept.</sup> ~~Sept.~~ 5th. to the 11th 1904.

H.B.Tarver,  
Surveyor for Reagan County.

J.M.Carson.  
Surveyor for Irion County.



The State of Texas, §  
County of Irion. §

I, W.W. Carson County Clerk, in and for Irion County, Texas, do hereby certify, that the above and foregoing, 5 pages is a true and correct copy, of an order of the Commissioner's Court, of said County, approving the Field- notes of the West boundary line of Irion County, also a true and correct copy of the field- notes as the same appears of Record in the Minutes, of said Commissioner's Court on pages 87 to 90 inclusive, in Book 2, of Irion County, Texas.

Witness my hand and the Seal of said Court, this the 30th. day of March A.D. 1905.

*W. W. Carson* County Clerk, and  
Exofficio Clerk of the Commissioner's Court  
of Irion County, Texas