

~~38~~

~~23~~

Clay Co. plat

*Line between
Clay County
&
Jack County.*

*Filed in the Genl. Land Office
January 6th 1899.*

F I E L D N O T E S O F C O U N T Y L I N E

E S T A B L I S H E D B E T W E E N

C L A Y A N D J A C K C O U N T I E S

B Y

O R D E R O F T H E C O M M I S S I O N E R ' S C O U R T S O F S A I D C O U N T I E S .

}.).:.: :.:.:.:.:.:.:.:.:.:.:.:.:.:.:.:.:.:.:.:.:.:.:.:.:.:.:.:.:.:.:.:.:.:.:.:.:.:.:.:.:.:.:.:.:.:.:.:.:.

B E G I N N I N G in the West Boundary line of Montague County 4218 varas North from the South West corner of said County, a stone marked N.E.J. on South side and S.E.C. on North side, from which a Post Oak 12 inches in diameter bears North 57 East 1 vara, marked H, and another 8 inches in diameter bears South 54 1/2 West 22 varas, marked H.

T H E N C E West at 625 varas West Boundary Line of Section No. 41, East Texas R.R. Co., 693 varas North of its South West corner; at 1543 varas East Boundary Line of Freestone County School Land 1244 varas from its South East corner; at 1900 varas 1st Mile Stone; at 3800 varas 2nd Mile Stone; - at 4813 varas old Mile Stone marked 2 on North side and 6 on South side; - at 5700 varas 3rd Mile Stone; - at 6771 varas old mile stone marked 3 on North side and 7 on South side; - at 7600 varas 4th Mile Stone; - at 8120 varas West Boundary Line of Freestone County School Land and East Boundary Line of Z.N. Morrell, 1309 varas North of the South East corner of said Morrell survey, and 1242 varas North of the South West corner of said Freestone County School Land; - at 9510 varas 5th Mile Stone; - at 11,400 varas 6th Mile Stone, at 12,030 varas branch; at 12,300 varas West Boundary Line of the Z.N. Morrell survey, 1275 varas North of its South West corner and 975 varas South of its North West corner, which point is 2258 varas North of the South East corner of the J. B. Atkinson survey; - at 13,300 varas 7th Mile Stone; - at 15,200 varas 8th Mile Stone; - at 15,500 varas West Boundary Line of J.B. Atkinson varas North of its South West corner, and 2234 varas South of its North West corner; - at ¹⁷⁸⁰⁰~~2244~~ varas 9th Mile Stone; - at 18,230 varas old

Mile Stone;-at 19,000 varas 10th Mile Stone;-at 20,900 varas 11th Mile
~~East~~ Stone;- at 22,800 varas 12th Mile Stone;-at 24,700 varas 13th Mile
Stone;- at 25,413 varas West Boundary Line of Wood County School Land,
2145 varas South of its North West corner;- at 25,714 varas creek;- at
26,219 varas old Mile Stone;- at 26,600 varas 14th Mile Stone;-at 26,894
varas East Boundary Line of James Watson survey, 440 varas South of its
North East corner;- at 28,215 varas old Mile Stone;- at 28,074 varas a
point 443 varas South of the South East corner of the E.W.East survey;-
at 28,500 varas 15th Mile Stone;- at 29,138 varas old Mile Stone;- at
30,400 varas 16th Mile Stone;- at 30,760 varas East Boundary Line of T.F.
Johnson survey 490 varas South of the South West corner of E.W.East sur-
vey and 200 varas North of the North East corner of Mitchell Putnam sur-
vey;- at 32,068 varas old Mile Stone;- at 32,220 varas the 17th Mile
stone;- at 33,916 varas West Boundary Line of W.F.White survey and East
Boundary Line of Thomas Robbins survey 195 varas North of its South
East corner and 195 varas North of the South West corner of W.F.White
survey;- at 34,200 varas 18th Mile Stone;- at 36,100 varas 19th Mile
Stone;- at 37,822 varas old Mile Stone;- at 38,000 varas 20th Mile Stone;
at 38,327 varas a point 187 varas North of the North West corner of the
Mitchell Putnam survey;- at 39,900 varas 21st Mile Stone;-at 41,672 varas
old Mile Stone;-at 41,800 varas 22nd Mile Stone;- at 41,956 varas East
Boundary Line of Texan Emigration & Land Company Survey No.2642 117 var
-as South of its North East corner;- at 43,300 varas West Boundary line
of said last named Survey, 1173 varas South of its North West corner;-
at 43,677 varas old Mile Stone;- at 43,700 varas 23rd Mile Stone;-at
44,510 varas old Mile Stone;- at 45,600 varas 24th Mile Stone;- at 47,437
varas old Mile Stone;- at 47,500 varas 25th Mile Stone;- at 47,718 varas
7 Branch
old Mile Stone;- at 48,604 varas the South West corner of Clay County
and the North West corner of Jack County as established by Sam Green
and Calloway, said point is 68 varas East and 155 varas North of the
South West corner of Texan Emigration and Land Company Survey No.2646.

Surveyed August 24th, 1898, to September 5th, 1898. Variation

County 2411

The State of Texas

Counties of Clay and Jack

We, the undersigned, having been appointed by the Commissioner's Courts of Clay and Jack Counties, Texas, to establish and mark the Line between said Counties in accordance with Provisions of Chapter CXXIX, Revised Statutes, approved April 22, 1879, of the State of Texas, do hereby certify that in compliance with said appointment and the orders of said Commissioner's Courts we have surveyed said Line, and that the foregoing PLAT and FIELD NOTES of said Line represent its true location on the ground as run and marked by us.

To certify which witness our hands thisday of October, A.D. 1898.

R. W. Watkins
....., Special Surveyor of Clay County, Texas.

Geo Speller
....., County Surveyor of Jack County, Texas.

and we further certify that the said field-notes, represents the resurvey of the line as established by Sam Green and W. Calloway surveyors of Clay and Jack Counties respectively, and afterwards confirmed by order of the Civil Court of appeal of Texas as the boundary line between said Counties, and the marks and mile stones - natural and artificial as found on said line, are correctly described in said filed notes - dated on same date as aforesaid mentioned.

R. W. Watkins Special Surveyor Clay Co. Texas
3. Geo Speller Surveyor Jack Co. Texas

3. Geo. W. Miller - Surveyor Jack Co. Texas
 By H. W. Beckwith, Spectator in Geo. W. Beckwith
 same date as above mentioned.
 Located in said field notes - noted on
 said as found on said line and corner of
 said line and said line - natural and artificial
 land line between said Counties, and the
 Civil Court of appeal of Texas set the same
 and approved and signed by me of the
 before of said and said Counties respectively
 as specified by said line and V. Callaway was
 notes, and present the record of the line as
 and as per the certificate that the same is
 correct.

Geo. W. Miller

County Surveyor of Jack County, Texas.

D. H. Mortimer

Special Surveyor of Clay County, Texas.

Jack Co Bdry Line 37
 See also Map K-7-1898

1898.

To certify which witness our hands this day of October, A.D.

ground as run and marked by us.
 THAT and FIELD NOTES of said line represent its true location on the
 Commissioner's Courts we have surveyed said line, and that the foregoing
 certify that in compliance with said appointment and the orders of said
 raised Statutes, approved April 22, 1879, of the State of Texas, do hereby

between said Counties in accordance with Provisions of Chapter CXXIX, Re-
 Courts of Clay and Jack Counties, Texas, to establish and mark the line
 We, the undersigned, having been appointed by the Commissioner's

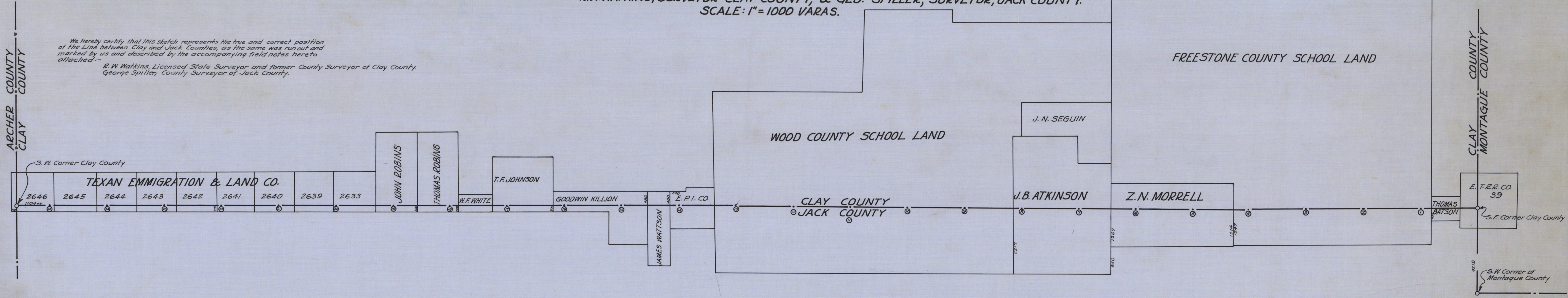
Courts of Clay and Jack
 The State of Texas

Surveyed August 24th, 1898, to September 5th, 1898. Variation

PLAT OF LINE BETWEEN CLAY COUNTY & JACK COUNTY, TEXAS.

BY
R.W. WATKINS, SURVEYOR CLAY COUNTY, & GEO. SPILLER, SURVEYOR, JACK COUNTY.
SCALE: 1" = 1000 VARAS.

We hereby certify that this sketch represents the true and correct position of the Line between Clay and Jack Counties, as the same was run out and marked by us and described by the accompanying field notes hereto attached:-
R. W. Watkins, Licensed State Surveyor and former County Surveyor of Clay County,
George Spiller, County Surveyor of Jack County.



100-1