

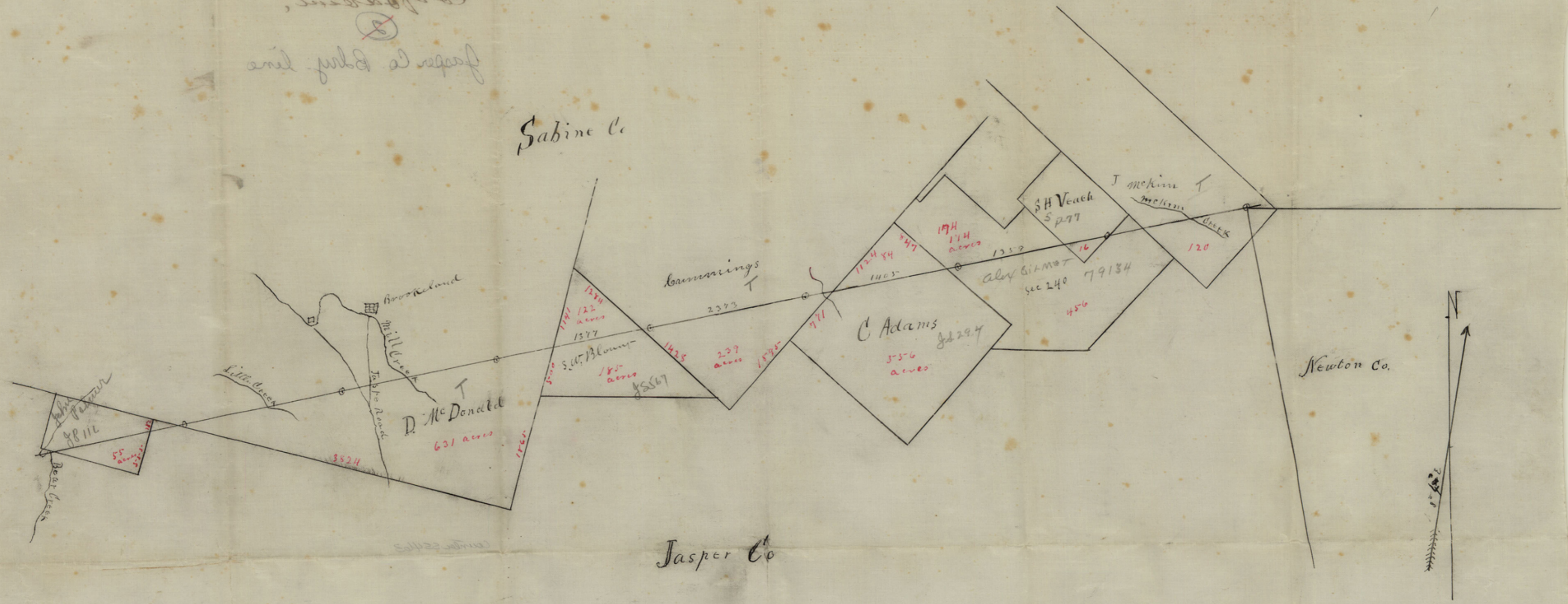
State showing the
land belonging to
Jasper Co from the
Co of Adams,
and by line

Jasper Co by line

Sabine Co

Jasper Co

Newton Co



Sketch showing the
 boundary line separating
 Jasper Co from the
 Co of Sabine,
 ②
 Jasper Co. Bdry. line



Scale 1000 feet to the inch

Count 55463

Jasper Co. Bdry. line
Jasper and
Sabine Co. Bdry.

Filed Feb'y 13th 1893

2

see endorsement on
field notes.

2/13/93 Reamment

State of Texas }
County of Jasper } 3

To the Honorable
Commissioners Court of Jasper
and Sabine Counties:

The undersigned, E. S. Kellie,
County Surveyor, especially
appointed by the Commissioners
Court of Jasper County, to estab-
lish and mark, according to
law, the line between Jasper
and Sabine Counties, respect-
fully submit the following
report of facts:

On the 15th day of August
1892 we began work at the
Original Corner of Jasper,
Sabine and San Augustine Coun-
ties, which we found and recogni-
zed and took the following bear-
ings from the stump of the
Cypress which marked the
Original Corner: A. Pin Oak 15
inches in diameter bears South
61° E. 15 varas and a Sweet gum
12 inches in diameter bears South
49° E. 19 varas.

Thence N. 79° E. with vari-
ation of 8° 4' E. at 60 varas, Cros-
sed Bear Creek, at 200 varas
again crossed Bear Creek,

Sycamore Tree $6\frac{6}{10}$ feet in diam-
eter, at 219 varas crossed South
line of the John Palmer pre-emption,
at 268 varas old Gasper and
San Augustine road 60 varas N.
 44° W. from N.W. Corner of the L.C.
Martin pre-emption. At 1485 varas
crossed the East line of the John
Palmer pre-emption 182 varas
S. 15° W from its N.E. Corner, and at
1840 varas crossed the South line
of the Donald M^c. Donald League
3824 varas N. 75° W. from his S.E.
Corner, at 1900 $\frac{8}{10}$ varas, raised
a mound and set post for first
mile.

At 2920 $\frac{8}{10}$ varas crossed Bend
of Little Creek at 2950 $\frac{9}{10}$ varas
crossed Little Creek, at 3801 $\frac{6}{10}$
varas raised a mound and
planted post for second mile.
At 4021 $\frac{6}{10}$ varas, crossed Brooks
Mill road; at 4161 $\frac{6}{10}$ varas
crossed Brookeland road 832
varas South of Brookeland.
At 4541 $\frac{6}{10}$ varas crossed Mill
Creek; at 5702 $\frac{4}{10}$ varas, rais-
ed a mound and set post for
Third (3^d) mile.

At 6222 $\frac{4}{10}$ varas crossed East
line of Donald M^c. Donald

League 500 varas N 15° E from
the S.W. Corner of the S.W. Blount
Survey.

At 7539⁴/₁₀ varas crossed the
S.W. line of the M. Cummins
League and E. line of the S.W.
Blount Survey 1428 varas from
Cummins S. Corner.

At 9603²/₁₀ varas raised a mound
and set post for the fourth (4th)
Mile.

At 9504 varas raised a mound
and set post for the fifth (5th)
Mile.

At 9774 varas crossed Rock
Creek; at 9914 varas crossed
the S.E. line of the M. Cum-
mins League and N.W. line of
the Christopher Adams 640 acre
Survey 771 varas from his
W. Corner.

At 11049 varas crossed the N.
E. line of Christopher Adams.
847 S. 48° E from N. Corner of same.

At 11134⁹/₁₀ varas ~~crossed~~ raised a
mound and set post for sixth (6)
Mile. At 12493³/₁₀ varas crossed the
S.W. line of S.H. Deatch Pre-emption
377 varas from his South Corner.

At 13109⁸/₁₀ varas raised mound
and set post for seventh (7) Mile

At 13119⁸/₁₀ varas crossed the S.E. line of A.H. Veatch 300 varas S. 42° W. from his E. Corner At 13472⁵/₁₀ varas crossed the S.W. line of J. McKim League 1063 varas N. 48° W. from his S. Corner. At 13939⁸/₁₀ varas crossed McKim Creek, at 15005⁶/₁₀ varas Corner of Jasper, Newton Counties on South line of Sabine Co. Making the length of the line seven and eight tenths miles. For further information would refer you to accompanying plot giving divisions and distances through which the line runs and making part of this report.

Respectfully
E. J. Kelli

Co Surveyor Jasper Co.

J. E. J. Kelli do hereby certify that the above and foregoing is a true and correct report of the work as above stated.

E. J. Kelli

Jasper Co. Bolny. line
Boundary Line between
Jasper
and
Sabine

Folios Feb 13/93

Wm Bramlette

These papers are
sketch do not compare
with the maps of Jas
per & Sabine
in use in this office
and the line appears
to have been retraced
by the surveyor of Jas
per with showing
evidence of notice
to the interested
County of Sabine
2/10/93 Brammont