

02  
Boundary Si. Steves  
Angelina Co  
and  
Jasper Co  
2

---

Filed Oct. 4<sup>th</sup> 1883.

---

Tracks corrected and a  
by handed the Compo of  
Sub. Sects April 5/84.  
Beaumont

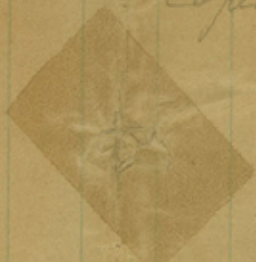
---

2 (X)

Angelina 41  
Taspe County.

Filed Octob. 4/83.

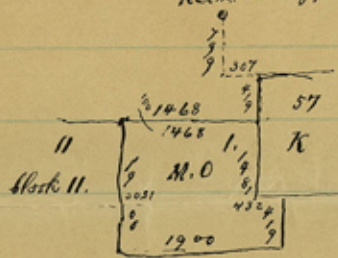
abstract corrected  
copy sent Campb. Apr. 5/83  
Deannant





5

Revised on strong point 160 or S. of Creek



Counter 55471











In the the Commissioners Court of Angelina County  
May Term 1883

It is ordered by the Court -  
that - whereas The Surveying and marking of  
the County line between this Angelina County  
and Jasper County Done by J. H. Davis in  
May 1883 Appears to this Court to be in Error.  
James Gibson County Surveyor of Said Angelina  
County be required to resurvey and plainly  
mark the same, ten feet wide beginning on  
the 3<sup>rd</sup> Monday the 18<sup>th</sup> day of June 1883 at Fort  
Teran on the Neches River, Running from  
thence with the old county line to the mouth  
of Ajish Bayou on the Angelina River, that  
being in accordance with the act creating  
the boundary line between the aforesaid Counties  
The State of Texas

County of Angelina J. H. Covitt Clerk of the  
County Court of Said County  
do hereby certify that the foregoing is a True  
and Correct Copy of an Order of the Commiss-  
ioners Court of Angelina County, Texas, Passed  
at the May Term 1883, thereof, as Shown by the  
minutes thereof, on page, 164,

Given under my hand and the Seal of Said  
Court on this 17<sup>th</sup> day of May A. D., 1883

J. H. Covitt Clerk County Court  
and, Ex officio Clerk es. Com. Court  
Angelina County Texas,



State of Texas To the Honorable  
County of Angelina Commissioners Court  
of Angelina Co. Texas

The undersigned James Gibson Surveyor  
Specially Appointed by Angelina Co. and  
W. W. Blake Specially Appointed by  
Jasper County to establish and mark acco-  
rding to law the line dividing Angelina and  
Jasper Counties would respectfully submit  
the following report of facts:

On the 18<sup>th</sup> day of June 1883 we  
commenced operations on the Neches river  
opposite to old Fort Heran. The proposition  
of Mr. Gibson was and no doubt the  
wish of both Counties was that the origi-  
nal line be found and traced through  
and marked between the two terminal points  
mentioned in the order of Court hereto  
attached with this object in view dili-  
gent search was made for some sign of  
the original Survey; but no marks of  
the Surveyors could be found.

For information in future we here state  
that on the course called for the County line  
at 130 Varas we struck the river.  
We then commenced offsetting down the  
river as follows: N 10° W. 100 Varas N. 80°  
E. 240 Varas N. 10° W. 80 Varas N. 80° E. 120  
Varas N. 10° W. 175 Varas N. 80° E. at 100  
Varas a perpendicular ledge of rock rising  
abruptly from the surface of the river  
bottom land or swamp and presenting a



very curious appearance. This ledge is  
 about 400 varas in length by about 15 varas  
 in width and about 30 feet high; flat on  
 top and divided into squares. It being so  
 much out of the usual course of nature in  
 this region, we took its bearings from  
 the corner of the County and found it to  
 bear N.  $49^{\circ} 2'$  E. 688 varas from the corner  
 of the County. From this ledge of rock  
 we moved N.  $80^{\circ}$  E. 1710 varas, thence we  
 moved S.  $10^{\circ}$  E. a distance equal to our depart-  
 ure from a line at N.  $80^{\circ}$  E. Here we  
 again made search for some sign of the  
 original line, but found none. Without  
 instruments for taking observations and  
 determining the exact latitude of the two  
 terminal points and considering actual  
 field work more satisfactory for all  
 practical purposes, we concluded to run  
 the course and distance called in the  
 original survey, and note the distance  
 of our departure from the true course  
 and away from the mouth of Bear Creek  
 and thus by actual survey and measurement  
 test the correctness of the course called in  
 the original survey. Pursuing the plan  
 above indicated, we proceeded on the said  
 course N.  $80^{\circ}$  E. until we were opposite  
 the mouth of Bear Creek. measuring the  
 distance of our departure we found  
 that we had fallen 2510 varas S.  $10^{\circ}$  E.  
 from the mouth of Bear Creek then by



Calculation we found the true course  
 between the terminal points to be  
 $S 76^{\circ} 51' W$  with a variation of the needle  
 $8^{\circ} 15' E$ . We then carefully measured back  
 taking the following notes 1900 varas  
 Set a post for 1<sup>st</sup> mile 3800 "  
 " " " 2 " 5483 " West  
 line of the W. H. Shannon league & hence  
 south on said line at 590 varas S. W. Cor.  
 of same with Red oak marked X for bearing  
 tree continued on the Co. line at  
 5700 varas set a post for 3<sup>d</sup> mile  
 7370 " Angelinea river 65 varas wide  
 On the west bank of Angelinea river made  
 the S. E. Cor. of Angelinea county by sinking  
 a cypress post & marked with the  
 names of the counties and bearings as  
 follows white oak marked C. I. brs  $N. 88\frac{1}{2}^{\circ}$   
 $W$ . and a pine marked C. I. brs  $S. 4\frac{1}{2}^{\circ} E$ .  
 Thence continued our course at  
 1900 varas set a post for 1<sup>st</sup> mile at  
 3630 " Branch  
 3680 " "  
 3800 " set a post for 2<sup>d</sup> mile  
 4840 " west line of the L. S. Walters  
 league & hence  $N. 55^{\circ} W$ . 2110 varas north corner  
 of same at  
 5700 varas raised a rock mound for 3<sup>d</sup> mile  
 6980 " main road from Homer to Jasper  
 7600 " raised a mound for 4<sup>th</sup> mile  
 7993 " West line of David Baird league  
 Thence  $N. 35^{\circ} W$ . 2342 varas cor. of same



30400. Varas. Set a post for 16<sup>th</sup> mile  
31023 " west line of Graham League  
Thence south 144 varas cor. of same  
31433 varas E. line of S. Watts labor Thence  
Thence north 100 varas cor. same not found  
32040 varas East line of the S. W. Blount Survey  
Thence north 205 varas N. W. cor. S. Watts line  
bearing, M Rd X  
32300 varas set a post for 17<sup>th</sup> mile  
33480 " west line of the Blount Thence  
south 777 varas N. E. cor. Wm Richardson Survey  
34200 varas set a post for 18<sup>th</sup> mile  
35740 " struck the Neches river  
Thence with the river to old Fort Teran  
37140 varas corner of Counties

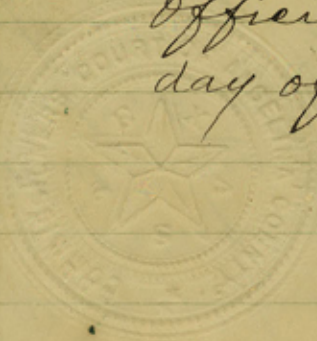
For further information we would  
respectfully refer your Honors to  
accompanying map of our course giving  
distances and divisions of the land through  
which the <sup>line</sup> runs and which we make a  
part of this report

James Gibson Surveyor  
W. W. Blake Surveyor

The State of Texas  
County of Angelina  
I J. E. Everitt Clerk of the  
County Court of Angelina  
County, Texas, hereby certify that the foregoing  
is a true and correct copy of the Report of  
James Gibson & W. W. Blake Surveyors of the  
Surveying & Marking of the County line between



the Counties of Jasper & Angelina as Presented  
to the Commissioners Court of Angelina County  
and acted upon, and approved, by said Court  
at the August Term thereof, as shown by  
the minutes of said Court on page 186.  
and I further certify that the accompanying  
map hereto attached is a copy of the map  
of said line filed with the aforesaid Report  
Given under my hand and Seal of  
office at, office in Homer on this 28<sup>th</sup>  
day of September A.D. 1883



J. C. Corvitt Clerk County Court  
Angelina County Texas  
And Ex-officio Clerk Co. Com. Court,  
A.C.

Jasper and  
Angelina Co  
Boundary  
1883

①

Jasper Co. Bdry line