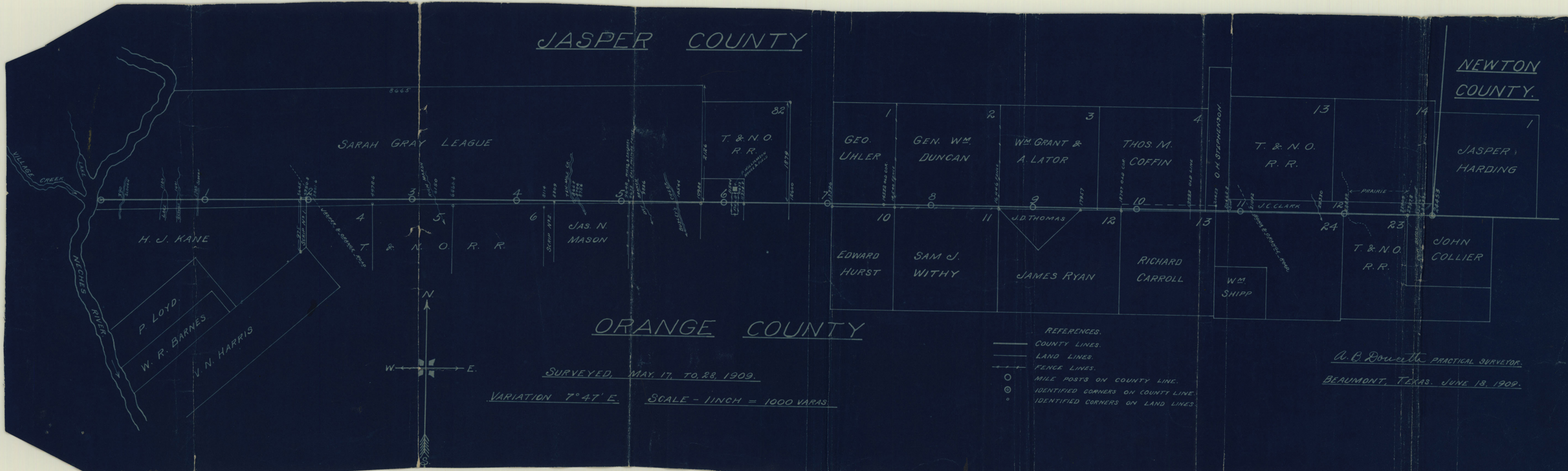


JASPER COUNTY

NEWTON COUNTY.



ORANGE COUNTY

SURVEYED, MAY, 17, TO, 28, 1909.

VARIATION 7° 47' E. SCALE - 1 INCH = 1000 VARAS.

- REFERENCES.
- COUNTY LINES.
 - LAND LINES.
 - - - FENCE LINES.
 - MILE POSTS ON COUNTY LINE.
 - ⊙ IDENTIFIED CORNERS ON COUNTY LINE.
 - IDENTIFIED CORNERS ON LAND LINES.

A. B. DOWD PRACTICAL SURVEYOR.
BEAUMONT, TEXAS. JUNE 18, 1909.

~~2~~ Jasper Co Bdry Line 3



Counter 55481

15/ Jasper Co. Boundary 2

Orange-Jasper County Boundary

Recd. in G.L.O.
Aug. 10, 1911.

~~20433~~
~~18787~~

27889
25400
23326

20433
18787
1796

14540
10940
3552

counted 55482

TO THE HONORABLE COUNTY JUDGE AND COUNTY COMMISSIONERS
OF JASPER COUNTY, TEXAS:

SIRS:-- In pursuance of an order made by the Honorable County Commissioners Court of Jasper County, composed of yourselves at April term, 1909, appointing me to ascertain by actual survey the true boundry lines between Jasper and Orange Counties, Texas, and to make and establish the lines and corners of said Counties in the manner provided by law and to fix and establish the lines and corners of the lands abutting on said lines and to establish the position of the lands lying across said lines and to begin said survey on May 17th, 1909, at the Jasper Harding survey, I did on May 18, 1909, begin said survey as directed in said order, assisted by Hon. P. E. Scarborough, County Surveyor of Jasper County and Hon. Jack Nogess, County Surveyor of orange County and have finished said survey; but not according to said order. My action was governed by circumstances I met on the ground. In the first place Mr. Nogess made objections to taking any time in locating or checking any lines or surveys so as to tie the same by course and distance to the County Line, and did not have in his possession the feild notes of any of the surveys crossed by the said line. On Monday May 24 at 5:30 P.M. we finished the work of locating the County Line at which time Mr. Nogess said that he did not want to do any more work on said line for his county, and departed for his home in Orange; leaving Mr. Scarborough and myself to do the work of tying the surveys to the county line as best we could with the field notes and knowledge in our possession. We made the following survey on the ground:-

Beginning at the S.E. Corner of the J.S. Cole Preemption thence W. on said Cole S.B.L. to an L corner of State Section #80, thence S. on E. line of said section #80 to the most S.E. Corner of same, thence W. on its S.B.L. to the supposed S.E. corner of J.J. Copley Survey, thence S, on its E.B.L. to the N. line of the Sarah Grey League, thence E. on said N. line to its N.E. corner.

This survey was made , so as to locate the true position of section #82 on the ground; having measured its N. and E. boundry line to its south east corner, we failed to identify any of its corners according to its field notes. We also surveyed the N. and E. lines of the Sarah Grey so as to establish its connection with the county line. We surveyed what is known as "Script #1" located for G.W. Sanders and tied the same to the county line (See field notes and map attached for location and connection)

I have also made a report complying with said order in all its requirements, showing the location of said lines with field notes and maps accompanying same to the County Commissioners' Court of Orange County, as required by said order.

Respectfully submitted,

A. B. Donceth
Practical Surveyor.

P. Scarborough
County Surveyor
Gasper County

R E P O R T

O F

A Survey of the line between the Counties of Orange and Jasper beginning on the 18th day of May, 1909, made by County Surveyor, P.E. Saarborough of Jasper County, and Jack Nogess, County Surveyor of Orange County, assisted by A.B. Doucette, Practical Surveyor of Jefferson County, made under an ^{ORDER}~~oath~~ of the County Courts of the respective counties:

It begins upon the East bank of the Neches River and right opposite the mouth of Village Creek or Big Alabama, which is one of the streams of Hardin County. At said point was a stake and a mound from which an Elm tree 24" in diameter bears S. 82½ degrees E. 10 varas distant, thence East on a variation 7 deg. 47' at 390 varas crossing a slough at 1180 v. another slough at 1401 v. crossing a lake 45 v. wide at 1785 v. cross the inside slough and entering high piney woods. At 1900.8 v. stake for the first mile post. At 3645.8 v. cross the W. line of script #1, located for G.W. Sanders at the point 29 v. S. of its N.W. Corner. At 3750.8 v. across its E. Boundary line 26 v. South of its N.E. corner and at 3801.6 v. mile stake #2. At 3881 v. the center of Jasper and Beaumont Public Road, at 4978.6 v. a point 79 v. N. of the N.E. corner of the State Survey #4, at 5702.4 v. mile post #3 in a low gum flat. At 6150 v. across Rich March, at 6460.4 v. a point 115 v. N. of the N.E. corner of section #5, of the T. & N.O. Ry. at 7603.2 v. #4 mile post, at 8114.2 v. a point 120 v. N. of the N.E. corner of section #6 at 8309.2 v. a point 12 v. N. of the N.E. corner of Script #2, also located for G.W. Sanders, at 8668.2 v. cross Ten Mile Creek at 8706 v. Recross same Creek at 8756 v. cross the creek for the last time. And at 9504 v. the mile post #5, at 9642 v. cross Wiess and Sanders pasture fence at 9673 v. a point 6 v. N. of the N.E. corner of the Mason Survey at 9836 v. cross a branch course S.E. at

10544 v. cross Busley's Branch 10777 v. past an old corner with three witness trees for bearing at 10988 v. cross the E. line of the Sarah Gray 4 M. N. of its S.E. corner 2126 v. S. of its N.E. Corner at 11404.8 v. mile post #6, at 11544.8 v. enter B. Williamson's field at 11673.8 v. enter the timber at 11778.8 v. cross the E. line of the William Williamson Pre-emption which is also the W. line of the State School section #82, at 12600.8 v. across the supposed E. boundary line of the State School Section #82, at 13305.6 v. mile post #7, at 13396.6 v. cross to supposed W. line of George Uhler section at the point 42 V. N. of its S.W. corner at 14332.6 v. pass an old corner on the S. of this line at 14540.6 v. cross the W. boundary line of the George W. Duncan section, at a point 36 v. N. of his S.W. Corner. This section is fenced for pasture purposes on its W., S., and E. boundary at 15206.4 v. the mile post #8, inside of the pasture at 16446.4 v. cross the E. fence at the supposed E. boundary line of the said Duncan section at the point 36 v. N. of its S.E. corner at 17107.2 v. the mile post #9, at 17957.2 v. passed J.D. Thomas N.E. corner 12 v. S. of this line at 18707.2 v. cross a well marked line, course N. & S. This point is 35 v. N. of an old corner marked "X" on a Red Oak 24" in diameter at 19008 v. the mile post # 10. At 19988 v. cross an old line at 20453 v. cross the E. boundary line of Richard Carroll Survey at a point 89 v. S. of its N.E. corner according to a well marked line at this time, at 20662.8 v. cross A.C. Clark's west Boundary line at a point 200 v. S. of the S. line of the T. & N.O. railroad section #13, at 20908.8 v. the mile post #11 at 21092.8 v. cross the Orange and Buna Road at 22330.8 v. cross Clark Branch course S.E. 22788.8 v. past 20 v. S. of Clark's house at 22809.6 v the mile post #12, in an old field at 22889.6 v. enter black land prairie at 23909.6 v. enter timber at 23978.6 v. past

14540
13396
11544

A3

#3-----

the N.E. corner of T. & N.O. Section #23 at 24167.6 v. cross
the W. branch of Cow Bayou at 24220.6 v. cross the E.
branch of Cow Bayou at 24453.6 v. the S.W. corner of Jasper*
Harding Survey which is also the S.W. corner of Newton County
and S.E. corner of Jasper County.

A. B. Donnelly
Practical Surveyor.

W. Scarborough
County Surveyor
Jasper County

Jasper Co. Bay. L. # 3

Counter
55487

A4

Orange Jasper 2
Jasper Co. Bdry Line 3

counter 55428