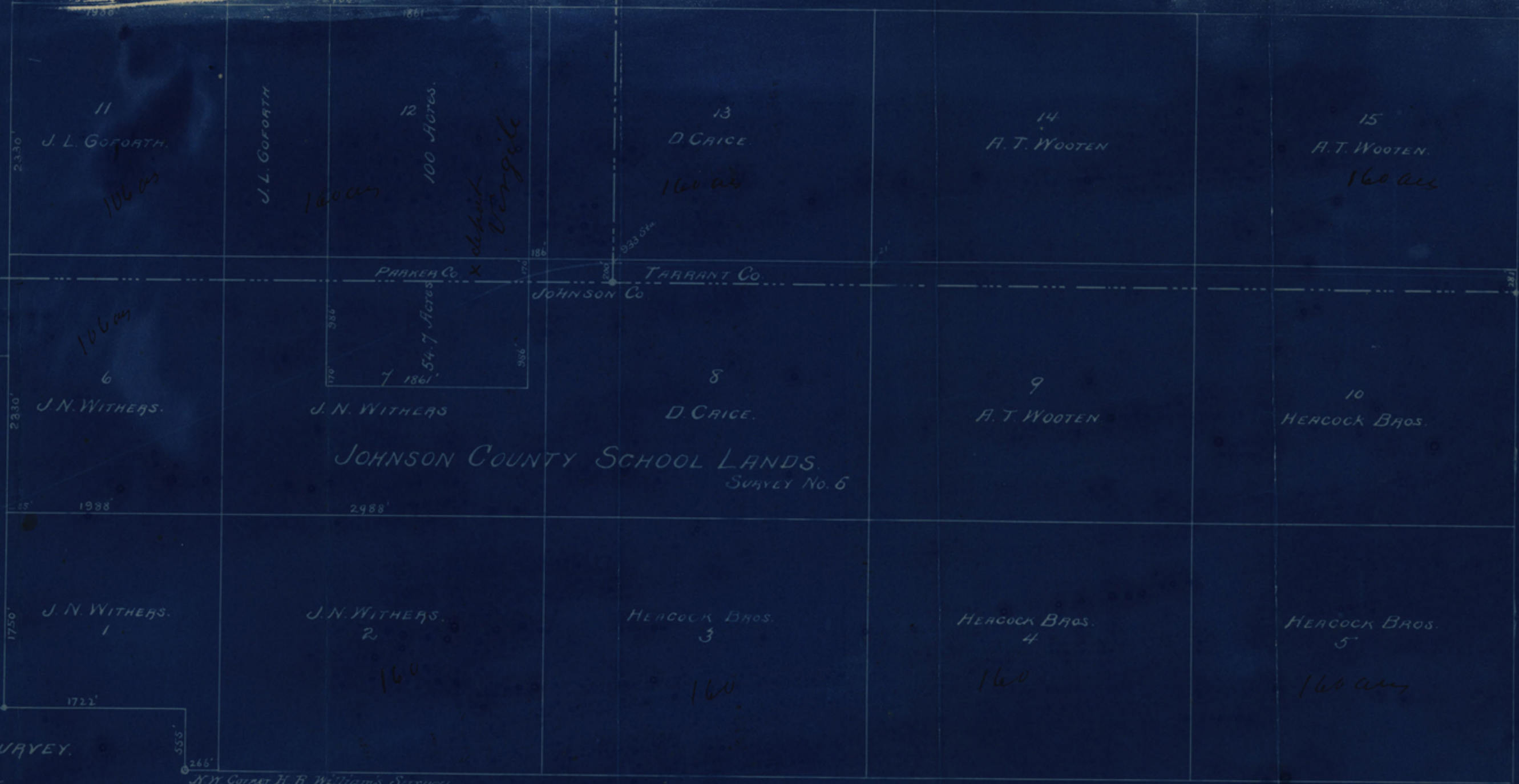


WM. TRYON SURVEY.

H. W. BOYCE SURVEY

N.W. Corner H. R. Williams Survey



DEBBIE MORRIS SURVEY

Fort Worth Texa Sept 9th 1887

Hon R. M. Hall
Com. Gen Land office
Austin Tex

Mr Sir

On the reverse side you will find
a true and correct plat. on the Johnson Co.
School lands. Survey No 6 of the S.W. cor.
of Tarrant & S.E. cor of Parker counties, and the
Johnson & Tarrant & Parker Counties lines
represented as they lay on the ground
By which you can correct abstract
The South line of the Deiby Morris is exactly
on the county line.

Each Block or Subdivision the School lands
is represented in feet instead of rods.
1000 ft to inch

Respectfully
A. J. Chambers.

of Fort Worth & Rio Grande Ry.

Filed Aug. 9th 1887

Russell
Com^r

Johnson Co. S.W. Bdry. line
No 5/1887

See Johnson Co. Sch. Sol.

1-920

1887