

~~Karnes Co. Bdry. line~~

~~7~~

6

Boundary Line  
Between

Live Oak and Karnes  
Counties -

---

Filed Sept 29<sup>th</sup> 1924

J. T. Robison, Court  
Clerk. cc.

No.175

Whereas great uncertainty exists regarding the boundary line between Live Oak and <sup>Karnes</sup>~~Atascosa~~ Counties, and it appearing to the consideration of the Court that there is a diversity of opinion as to the true position of the boundary line <sup>dividing</sup> Live Oak and <sup>Karnes</sup>~~Atascosa~~ Counties, and it further appearing to the court that said diversity of opinion may in the near future prove detrimental to the citizens of said Live Oak and <sup>Karnes</sup>~~Atascosa~~ Counties. Now therefore to prevent injury, and to forever definitely settle the boundary line between said Live Oak and <sup>Karnes</sup>~~Atascosa~~ Counties, and that a public necessity exists that said boundary line should be established, as the law directs.

It is therefore ordered, adjudged and decreed by the Court that the boundary <sup>line</sup> between Live Oak and <sup>Karnes</sup>~~Atascosa~~ Counties be and the same is hereby adopted and established and forever definitely settled the boundary line between said Counties, according to the following report and survey made by W.J.Seale Surveyor of Karnes County, Texas, as follows, to-wit:

Now comes W. J. Seale Surveyor who was appointed to name the county lines between Karnes Live Oak and Atascosa Counties at a previous term of this court; and files his report of said survey which was examined approved and adopted and ordered to be recorded in the minutes of this court and a certified copy returned to the General Land office at Austin Texas.

No. 516. Report of W. J. Seale Co. Surveyor.

The State of Texas, #

County of Karnes. #

To the Hon Commissioners Court of Karnes County Texas, having been appointed by your Honorable body on the 23 day of January A. D. 1883, to survey Mark out and establish the boundaries line between Karnes and Atascosa and Karnes and Live Oak I proceeded to the place appointed by your Honorable body to wit: the north west corner of Karnes County on the day appointed for the beginning of the survey and there I met Mr. W. H. Fountain the surveyor appointed by the Commissioners Court of Atascosa County to assist in establishing the boundary lines between Atascosa & Karnes and having agreed upon the place for beginning the survey of said boundary line we made the survey as follows:

Beginning at a mesquit post and mound the post mkd. A. K. & W. which is the N. W. corner of Karnes County and the S. W. corner of Wilson County established by W. T. Sutherland former Co. Surveyor of Wilson County and myself as surveyor from Karnes County, this corner being situated on the H. B. Ward survey of 1280 acres about 550 vrs 240 E. of the N. W. B. of <sup>same</sup> Thence we run S. 40 deg. E. at 139 vs a branch 24 vs wide 650 vs a drain 1290 vs a drain 1650 vs top of a rock hill 1900 vs raised a stone and earth mound in the edge of a post oak point for the 1st mile. 2nd. Mile at 350 vs a drain at 393 1/2 vs intersected the north line of the J. R. Baker sur. 621 vs N. 50 E. of the N. W. corner of said Ward survey at 1455 vs middle of a lake 1707 vs. Tordilla Creek (9) vs wide 1820 vs a small drain 1900 vs placed a mesquit post and raised a mound of earth for the 2nd mile. 3rd. Mile at 1050 vs road to settlement 1405 a road to Bristers 1410 vs intersected the S. E. line of the John Baker and the N. W. line of the Wm. G. Preusch survey 860 vs N. 50 E. of the S. W. cor of said <sup>John</sup> 1900 vs placed a mesquit post and raised a mound of earth for 3rd mile. 4th. mile. 1340 vs the old San Patricio road 1900 vs raised a mound of earth and stone from which mound a L. O. 20 in dia mkd. K. brs. N. 12 W. 2 1/2 vs. and do mkd. A. brs S. 16 W. 9 vs this point is on the top of the range of hills in a L. O. grove. 5th Mile. at 170 vs intersect the prairie 900 vs intersected the S. E. boundary of the W. G. Preusch sur 860 vs N. 50 E. of the S. W. corner of the same. this being the N. W. boundary of the John Clifton survey 1675 vs N. 50 E. of his N. W. cor. 1560 vs crossed the head prong of Weedy cr. 1900 vs placed a mesquit post and raised an earth mound. 6th. mile. 16 W. the N. W. line of the F. Anthony survey. 1575 vs from the N. E. cor. of same 1900 vs a mesquit post and earth mound. 7th, mile. at 1900 vs placed a mesquit post and earth mound. 8th. mile. at 1698 vs a road leading from P. Caseys to Lewis ranch 1900 vs placed a post and raised a mound. 9th mile. at 104 vs intersected the S. W. B. of the Jacob Eberly sur. 382 vs E. of the West cor this being also the N. W. boundary of the John Glover sur. 1600 vs from the N. E. cor of same at 1100 vs the point for the intersection of the N. W. bdy of Live Oak county making the S. E. corner of Atascosa County, not knowing definitely the corner of said Atascosa county and the line between Live Oak County and Karnes County being a continuing line of Karnes and Atascosa we did not mark any bearings at this place and it being the time appointed by your Hon Court to begin and Establish said boundary line of Karnes and Live Oak I ~~was~~ remained at place of appointment on the day appointed by your Hon Court sufficient time for any one to come and assist in surveying the line, and after

*Baker Riv. 1680 vs. the top of a rock hill*

waiting as before stated and no one representing said Live Oak County appearing to proceed with the survey as directed in the order of your Hon Court, continuing S. 40 deg. E. 750 vs weedy creek 10 vs wide 800 vs placed a mesquit post and mound for the 9 mile from the beginning of the survey 1st or 10th mile. 700 vs the N. B. of the P. Moore survey and the S. B. of the John Glover survey 1400 vs west of the S. E. cor of the Glover tract 723 vs the E. line of the Moore survey 16 vs south of his N. E. cor. 1440 vs a drain 1580 vs 4 live oak growing together marked K. & L. and blazed 1900 vs placed mesquit post and mound 2nd. or 11th mile at 1353 vs the N. B. line of the J. J. Poindexter survey 1632 vs east of his N. W. cor. 1900 vs placed a mesquit post and mound 3rd. or 12 mile. at 1545 vs intersected the N. E. bdy of said Poindexter survey and the S. W. B. of the Edward Garner sur. 1451 vs north of the S. W. cor of said Garner sur. 1900 vs a mesquit post and earth mound. 4th. or 13th mile. at 120 vs East Weedy or San Christoval cr. (14) vs wide 1669 vs intersected the N. W. bdy of the E. Henderson survey 340 vs east of the N. W. cor. of the same 1875 vs a drain 1900 vs a mesquit post and mound. 5th or 14th mile. at 1226 vs the west line of the John De Bord survey and the East line of survey in the name of Jesse Dyson 883 vs south from the N. W. cor of the Debose survey and 356 vs south of his N. E. corner 1900 vs placed a mesquit post and mound. 6th or 15 mile. at 565 vs a drain at 998 vs intersected the south boundary of the De Bord and the North boundary of a sur. in the name of Bulrice 1037 vs east of the S. W. cor of the De Bord and 914 West of the N. E. corner of said Bulrice sur. 1900 vs. placed a mesquit and mound. 7th. or 16th mile. at 546 vs intersected the E. bdy of the Bulrice sur and the west bdy of a sur in the name of E. L. Garrett 155 vs North of the S. W. cor of the same and the N. W. cor of a sur in the name of J. T. K. Lathrop at 1000 vs the center of Elm creek (14) vs wide 1900 vs placed a mesquit post and ~~raised~~ a mound on an open high hill. 8th. or 17th mile. ~~1900-~~ 900 vs a road ~~900--~~ 960 vs a drain 1900 vs a mesquit post and mound 9th or 18 mile. at 660 vs intersected the Bee county line placed a post and raised a mound for the S. W. cor of Karnes County marked a mesquit 8 in dia L. which bears from said post and mound N. 76 3/4 W. 6 3/4 vs another mesquit 8 in. dia mkd. B. brs S. 33 deg. W. 7 1/2 vs and a mesquit 12 in dia marked K brs N. 53 E. 11 1/2 vs. I was unable to find the corner of the I. Ijams survey at this point though I searched the timber for marks in every direction at about 449 N. 70 E. of this place I find a corner that is claimed for the Ijams sur but the mks. on the trees is not old enough in my judgment to be the original bearings and to make this line terminate ~~at-~~ with the corner would require the line to be deviated to the Eastward almost one degree from calls given in statute. Variation of Compor Darises Patent 9 deg. E. Variation of the Compor Blackmor and Adams. 9 deg. 45" E.

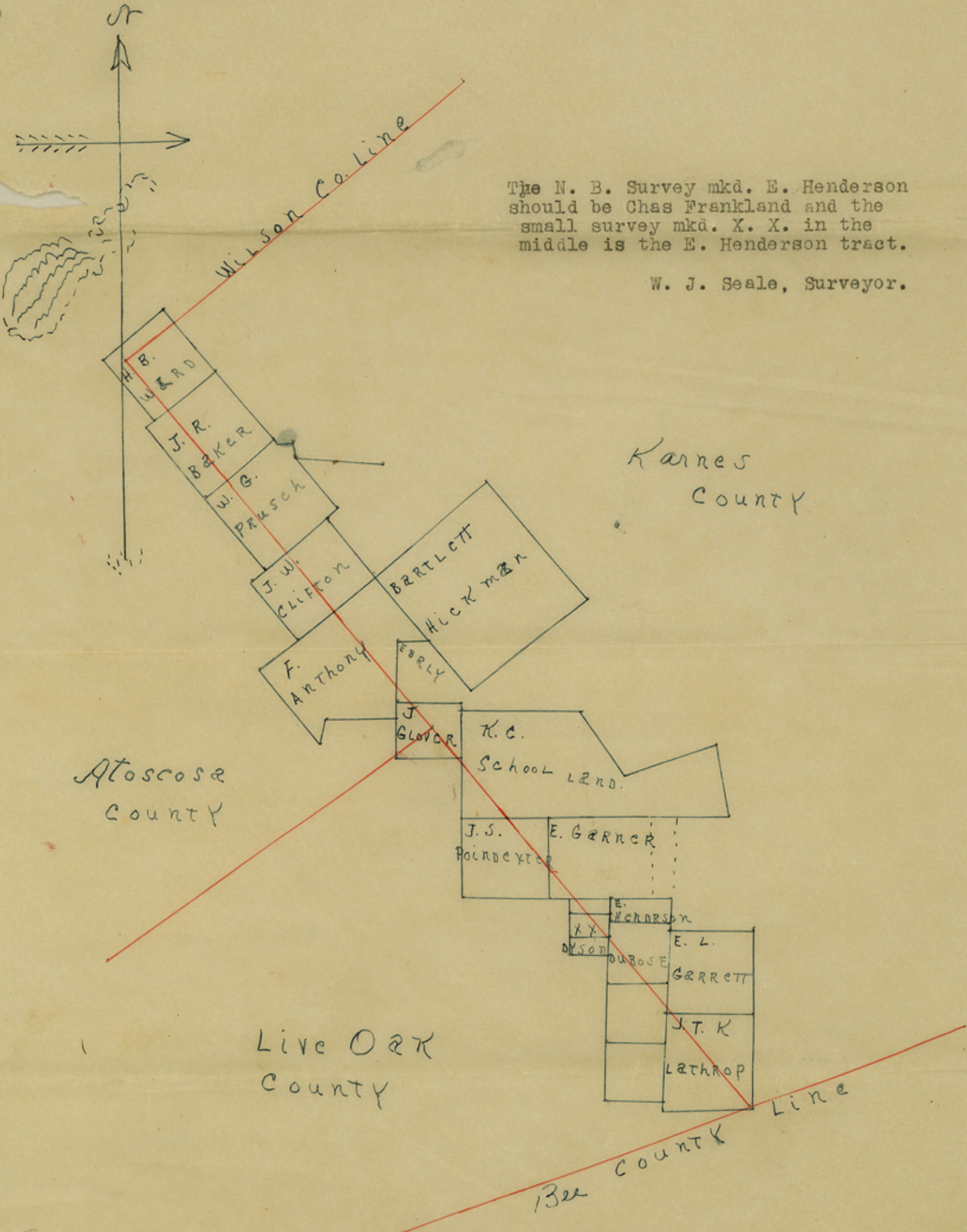
R. G. Seale, C. M. Lawhon. # C C.  
Raymon Plumer Jam Detty. #

Surveyed the 27, 28, 29 and 30 day of Feb. 1883. and 2nd 3rd 4 and 5 days of March 1883. Witness my hand at Helena this the 19 day of March 1883.

W. J. Seale.  
Surveyor.

Filed 19th March A. D. 1883. and duly and correctly recorded the 7 April A. D. 1883. G. W. Brown. Co. Clk K. C.

A<sup>2</sup>  
County 55 738 and 748 of 2200



The N. B. Survey mkd. E. Henderson should be Chas Frankland and the small survey mkd. X. X. in the middle is the E. Henderson tract.

W. J. Seale, Surveyor.

Karnes County

Atascosa County

Live Oak County

Bee County Line

scale 4000 vs = one inch.

6/2/95

State of Texas, #

County of Karnes. #

I, Grover E. Keepers, Clerk of the County Court, and Ex Officio Clerk of the Commissioners Court in and for Karnes County hereby certify that the above and foregoing is a true and correct copy of Order and report of W. J. Seale as surveyor as the same appears of record in Vol. 1. pages 145 et seq of the Commissioners Court Minutes of Karnes County, Texas.

Given under my hand and seal of office this 8th day of September 1924.

*Grover E. Keepers*

Clerk County Court and Ex Officio Clerk of the Commissioners Court Karnes County Texas.



County Clerk of Live Oak

It is further ordered by the court that the ~~County Clerk of Live Oak County~~ County, be and is hereby required to forward by mail without delay a certified copy of the foregoing order, to the General Land Office, at Austin, Texas.

A<sup>1</sup> Counter 55740

A<sup>1</sup> Counter 55741

Kaines Co. Edm. Liv # 6

State of Texas

certified copy of the foregoing order to the General Land Office of  
County, be and is hereby certified to forward by mail without delay

It is further ordered by the court that the

The State of Texas)

County of Live Oak) I, J. Marvin Johnson, Clerk of the County Court  
and Ex-Officio Clerk of the Commissioners' Court in and for Live Oak  
County, Texas, do hereby certify that the above and foregoing is a  
true and correct copy of Order and Report of W.J. Seale County Surveyor  
as the same appears of record in Vol. "6" at page 195 et seq., of the  
Minutes of the Commissioners' Court of Live Oak County, Texas.

To certify which witness my hand and the seal of the Commissioners'  
Court of Live Oak County, Texas, on this the 23rd day of September,  
A.D. 1924.

*J. Marvin Johnson* Clerk County Court, and  
Ex-Officio Clerk of the Commissioners' Court of  
Live Oak County, Texas.

Book No.

The Kames County Clerk of the Commissioners' Court of Live Oak County, Texas

A  
County SS 741

Karnes Co. Bdry line  
770 175 (7)

Boundary line between  
Live Oak County and  
~~Karnes~~  
Atascosa County

---

6/

X

Karnes and Live Oak  
Field Notes of County Line  
Filed September 29<sup>th</sup> 1924  
J. T. Robison, Cour-  
Clark-  
clk-

Filed Sept. 9<sup>th</sup> 1924  
Mainthursen  
County Clerk,  
Live Oak County, Tex

---

Adapted  
Revised  
Certified copy  
to Live Oak