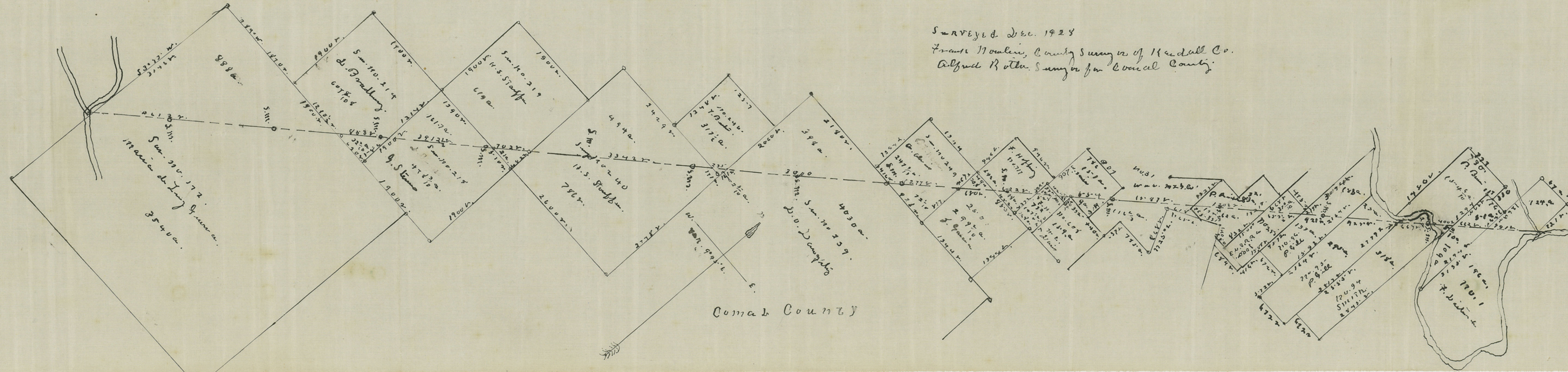


Kendall County

Surveyed Dec. 1928

Frank Moulton, County Surveyor of Kendall Co.

Alfred Roth, Surveyor for Council County



Council County

Kendall Co. ~~D~~ Bdry. line /CW
Comal - Kendall
County Line.

Filed April 19th 1929.

J. T. Robison, Comr -
Clark

Examined & Approved
5-30-29

Abstracted
in Vol. 52.

Received in G.L.O. 4/19/29, Clerk

6431

MONDAY APRIL 8th. 1929.

IN THE MATTER OF THE BOUNDARY LINE BETWEEN KENDALL AND COMAL COUNTIES.

On this day came on to be heard and considered the report of Frank Nowlin, County Surveyor of Kendall County, Texas, and Alfred P. Rothe, Special Surveyor for Comal County, who who at a previous term of this Court were appointed to run and establish the boundary line between Kendall and Comal Counties, which said appointment was made by this Court ordering that said line be run and established, and it appearing to the Court that said report is correct and that said Frank Nowlin and Alfred P. Rothe, surveyors have made due return of the field notes and map to this Court as provided by law.

It is ordered by the Court that the same be and is hereby in all respects approved, and that the said report, field notes and map be recorded by the Clerk of this Court and a certified copy thereof returned to the General Land Office.

It is further ordered by the Court that a certified copy of this order and of said report, field notes and map be forwarded to the County Judge of Comal County, Texas.

THE STATE OF TEXAS,)
COUNTY OF COMAL AND KENDALL.)

TO THE HONORABLE COUNTY COURT OF COMAL AND KENDALL COUNTY, TEXAS.

In compliance with an order passed by the County Courts of Comal and Kendall County, Texas, to re-survey the common boundary of Comal and Kendall Counties from the common corner of Kendall, Comal and Bexar Counties in middle bed of Cibolo at mouth of Balcones Creek to the mouth of Curry's Creek, a recognized point on the common boundary of Comal and Kendall County, we Frank Nowlin, County Surveyor of Kendall County, Texas, and Alfred P. Rothe, a surveyor of Comal County, especially appointed by the Com. Court of Comal County for this work, met, as agreed, on the premises of Paul Richter on the morning of Dec. 14th, 1928. Mr. Richter showed ^{us} as some Live Oak trees marked with five hacks in his pasture for County line marks and as they were standing to each other in a direction we thought said County line will run, we decided to run a random line from said point towards Curry's Creek and by running a line N. 47- 43' E. (Var. 9-45' E.) 3160 vrs. we exactly hit the mouth of said creek, the point we wanted to get to. By starting at the same point in Richter's pasture we ran S. 47- 43' W., the same course reversed, towards Balcones Creek and came out at a point 509 vrs. N. 42-17' W. from the common corner of said two counties. We made a calculation of the true course of said County line and found said line running N. 46-37' E. (Var 9-45' E) a distance of 13.92 miles, from mouth of Balcones Creek to mouth of Curry's Creek. We had by running our random line established rock piles at each mile and also raised rockpiles wherever we crossed the County Roads, and also ran connection lines wherever possible to known original corners of surveys traversed, so in going back we all placed said marks and rockpiles at their proper places on said true line.

Hereby annexed we submit field notes of said line and also sheet showing distribution of the acreage of all surveys traversed by said line among the two counties.

We employed in carrying out the work five men, viz: Two axmen, two chainmen and one flagman.

Respectfully Yours

Alfred P. Rothe
Frank Nowlin

Field notes of the County line between Comal and Kendall County from West corner of Comal County at mouth of Balcones Creek to mouth of Curry's Creek into the Guadalupe River. Being a distance of 13.92 miles.

Beginning on N.W. side of Guadalupe River at the mouth of Curry's Creek into the river; THENCE s. 46-37'W. (Var. 9-45'E.) at 934.6 vrs. pass W. line of Sur. #1 F. Dietrich 1356 vrs. South of its N.W. corner, at 1595 vrs. pass West line of Sur. #176 A. Conrads 868.7 vrs. South of its N.W. corner, at 1799 vrs. N. margin of Guadalupe River; Thence crossing said river and passing across survey No. 94, D.E. Smith at 1900.8 vrs. raise Rock pile indicating first mile, at 2630 vrs. point on bluff in common boundary line of Sur. # 94, D.E. Smith and Sur. # 95, P. Gill about 18 vrs. south of its common corner on bank of river; Thence S. 46-37' W. at 3455 vrs. pass common boundary of Sur. # 95 and 96 P. Gill, at 3801.6 vrs. raise mound to indicate second mile, at 4380 vrs. pass West line of Sur. # 96, P. Gill, 957.2 vrs. north of its S.W. corner, at 5033.5 vrs. pass W. line of Sur. # 255, E.L. & R.R. Co. at 5702.4 vrs. raise mound for third mile stone, thence 6236.5 vrs. pass West line of Sur. # 32, P. Richter 191 vrs. north of its S.W. corner, at 7603.2 vrs. raise mound indicating fourth mile, at 7823.5 vrs. pass West line of Sur. # 31, Waco Manufacturing Co. 314.2 vrs. north of its S.W. corner, Thence at 8377.5 vrs. pass N. line of said Sur. # 608 M.C. Davis 161 vrs. East of its N.W. corner, at 8599 vrs. pass W. line of said Sur. # 608.152 vrs. south of its N.W. corner; Thence at 8654 vrs. pass N. line of Sur. # 732 F. Hofheinz 384 vrs. East of its N.W. corner, Thence at 9182 vrs. pass East line of Sur # 717, F. Hofheinz 427 vrs. North of its S.E. corner, Thence at 9504 vrs. raise Mound for fifth mile post, at 9804 vrs. pass North line of Sur. No. 250, J. Garcia 494 vrs. East of its N.W. corner, at 10484 vrs. pass common boundary of J. Garcia and F. Albaris Sur. No. 249 877 vrs. North from S.E. corner of said F. Albaris survey and at 11404.3 vrs. raise rock mound for sixth mile post, at 11761 vrs. pass north line of Sur. # 239, D.O. Daugherty 2180 vrs. East of its N.W. corner, Thence at 13305.6 vrs. raise rock mound indicating seventh mile, at 14761 vrs. pass East line of Sur. # 246, T. Burton 161.6 vrs. North of its S.E.

corner, at 14996 vrs. pass N. line of Survey No.240, H.S.Stouffer
171 vrs. West of its N.E. corner; Thence at 15206 vrs. raise rock
mound for eighth mile post, at 17107.2 vrs. raise rock mound for
ninth mile post at 18338 vrs. pass East line of Sur.#219,H.S.
Stouffer 482 vrs. North of its S.E. corner, at 19008 vrs. rock
mound for tenth mile post, at 19040 vrs. pass North line of Sur.
#218, G. Stevens 510 vrs. West of its N.E. corner; Thence at
20908.8 vrs. raise rock mound for eleventh mile post, at 20952.5
vrs. pass East line of Sur.#214, D. Bradbury 586 vrs. north of
its S.E. corner, Thence at 21805 vrs. pass North line of Sur.#172
Maria de la Luz Guerra 3150 vrs. S.89- 00' E. from its N.W.corner
Thence at 22809.6 vrs. raise rock mound for twelfth mile post, at
24710.4 vrs. raise rock mound for thirteenth mile post, at 26417 vrs.
pass west line of said Sur.# 172 and East line of Sur.# 171 J.R.
Arocha and at 26476.5 vrs. to a point in middle of Cibolo at mouth
of Balcones Creek, the common corner of Bexar,Kendall and Comal
Counties, the place marked by a pile of rocks.

Surveyed Dec.14th to Dec.29th A.D.1928.

Joe Saunders

Oran Davis

Chainmen.

Alfred P. Rothe
Surveyor for Comal County,Texas.

Frank Nowlin
Co.Surveyor of Kendall County,Texas.

THE STATE OF TEXAS,)
 COUNTY OF COMAL AND KENDALL)

County

Distribution of surveys traversed by County line of Comal/and
 Kendall County from mouth of Curry's creek to mouth of Balcones
 Creek, as established by actual survey of line Dec.14th to Dec.
 29th A.D. 1928 by Frank Nowlin Co.Surveyor of Kendall County and
 Alfred P.Rothe surveyor for Comal County.

Survey No.	Grantee	Kendall Co.	Comal Co.
1.	F.Dietrich	123.6 acres	196.4 acres
176	A.Conrads	54.6 "	105.4 "
730	P.H.Bauer	154.4 "	5.6 "
94	D.E.Smith	2 "	318 "
95	P.Gill	24.6 "	295.4 "
96	P.Gill	187 "	133 "
255	E.L.& R.Ry.Co.	37.3 "	100 "
32	P.Richter	93 "	62 "
31	Waco Manufact.Co.	103 "	116.7 "
768	W. Smith	151 "	9 "
608	C. Davis	2.2 "	157.8 "
732	F.Hofheinz	12.3 "	147.7 "
717	F.Hofheinz	142 "	18 "
250	J.Garcia	20.4 "	299.8 "
249	F.Albaris	247.9 "	72.1 "
239	D.O!Daugherty	398 "	4030 "
246	Thom.Burton	317.5 "	2.5 "
240	H.S.Stouffer	494 "	786 "
219	H.S.Stouffer	618.2 "	21.8 "
218	G. Stevens	161.7 "	478.3 "
214	D.Bradbury	607.8 "	32.2 "
172	M.de la Luz Guerra	888 "	3540 "

THE STATE OF TEXAS)

COUNTY OF KENDALL)

I, Otto Schweppe, Clerk of the County Court in and for Kendall County, Texas, do hereby certify that the above and foregoing is a true and correct copy of the original "Order approving Report of Surveyors, Report of Surveyors, Field notes and Map" in the Matter of the Boundary Line between Kendall and Comal Counties, as the same appears of record in my office in Volume 4, on pages 149 to 153, inclusive, of the Minutes of the County Court of Kendall County, Texas.

In Testimony Whereof, Witness my hand and seal of office, at office in Boerne, Texas, this the 17th day of April, A.D. 1929.

Otto Schweppe, Clerk,
County Court, Kendall County, Texas.

2-20-29
Examined & approved -
[Signature]
[Signature]
County Line -
Comal - Kendall

Kendall Co Bdry Line 3

Comal-Kendall
County Line-

Filed April 19th 1929.

J. T. Robison, Cour.
Clark-

Examined and Approved -
5-30-29-

COMAL COUNTY, KENDALL COUNTY, TEXAS.



Walter G. ...
CLERK

at office in ... Texas, this the 14th day of May, A.D. 1929.
testimony whereof, witness my hand and seal of office,
this 14th day of May, 1929.

Witness my hand and seal of office of Kendall County, Texas.

Kendall and Comal Counties, as the same appears of record in the

field notes and map in the office of the Honorable J. T. Robison

County Clerk, Kendall County, Texas, in the office of the Honorable

the above and foregoing is a true and correct copy of the

County and for Kendall County, Texas, do hereby certify that

COMAL OF KENDALL () I, Otto Schmecke, Clerk of the County

DATE MAY 29 1929 ()