

East line

Field notes of the East line
of Kent County.

0 3
1
2
3
4
5
6
7
8
9
10
11
12
13
14
15
16
17
18
19
20
21
22
23
24
25
26
27
28
29
30
31
32

Beginning at the S.E. Corner
of Jackson's County, it being the
S.W. Corner of King, the N.W. Cor-
ner of Stonewall, and N.E. Corner
of Kent County, and described in
the field notes furnished by the
Hon. Andrew J. Baker, Com. Gen. L. C.,
as follows. To wit. Which point is a
mound and 4 pits, 8 feet apart, with a
mesopost 4 inches square, marked on
the sides & (we taken additional
bearings: to wit. the top of a double
peak bears N 72 1/2° E about 1570. var-
as. a round top peak bears N 32° E
about 1146. varas.)

1 m 3
From said Corner, thence South
at varas the line of Section
No 224 passing 350 varas East of
the N.W. Corner; at 1796 varas the
South line of J. Georges. pasture
thence, 740 varas East of the S.W.
Corner; and at 1900 varas an earth
mound, and 2 pits fore and aft, (two
marks on the line) from which the
Double Mountains bears S 10° E

2 Miles

From the first to the 2nd mile, South at varas the North line of Section No 223 - 300 varas East of the N.W. Corner, and at 1900 varas an Earth mound and 2 pits fore and aft. From which a mes marked K 2 M bears N 85 W 31. varas

3 mile

From the 2nd to the 3rd mile, South; at varas the North line of Section No 222 250 varas East of the N.W. Corner, and at 1900 varas, an Earth mound and 2 pits, fore + aft. From which the Double Mountains bear S 10 1/2 E.

4 mile

From the 3rd to the 4th mile, South, at varas the North line of Section No 229 200 varas East of the N.W. Corner, and at 1900 varas an Earth mound and 2 pits fore and aft. On South bank of a Canon, from which a mes marked K bears North 3 varas.

5 mile

From the 4th to the 5th mile, South, at varas the North line of Section 397. 150 varas East of the N.W. Corner and at 1900 varas an Earth mound and 2 pits, fore and aft. From which the Double Mountains bear S 35 E

6 mile $\frac{2}{3}$ From the 5th to the 6th mile South; at
2 varas the North line of Section No.
3 398, 100 varas East of the N^W Corner,
4 and at 1939 varas an Earth mound
5 and 2 pits. On the South bank of
6 Craton Rio.

7 mile $\frac{2}{3}$ From the 6th to the 7th mile, South at
8 varas the North line of Section No 399
9 50 varas East of the N^W Corner,
10 and at 1900 varas an Earth mound and
11 2 pits fore and aft. On South side of
12 a Canon; from which a Cluster of
13 Hackberry trees marked K, 7, bears N 11° E 13
14 varas and another Cluster, bears N 63° E
15 about 25 varas.

8 mile $\frac{2}{3}$ From the 7th to the 8th mile, South at
16 varas the North line of Section 429
17 100 varas West of the N. East, Corn-
18 er, at 1900 varas, an Earth mound and
19 2 pits fore and aft. From which a
20 Cluster of Mes marked K bears S 89° E
21 varas.

9 mile $\frac{2}{3}$ From the 8th to the 9th mile, South, at
22 varas the North line of Section No 428
23 150 varas West of the N^W Corner, and
24 at 1900 varas an Earth mound and 2 pits
25 fore and aft. On the West side of a Canon
26 about 4 varas West of the line. From
27 which a Mes marked K bears S 73° W 21
28 varas
29
30
31
32

10 mile

From the 9th to the 10th mile. South, at
varas the North line of Section 20427
varas west of the N E Corner,
and at 1900 varas an Earth mound
and 2 pits fore and aft, mound made
around a mes tree marked K 10

11 mile

From the 10th to the 11th mile. South
at varas the North line of Section
20426 - 130 varas west of the N E Corner
at 1900 varas an Earth mound
and 2 pits, fore and aft, from which a
mes marked K bears N 11 M bears
South 5 varas

12 mile

From the 11th to the 12th mile. South
at varas the N line of Section 20425 -
200 varas West of the N E Corner,
at 1900 varas an Earth mound and
2 pits, fore and aft, from which a
mes tree marked K bears ^{varas} N 32° E 29.7

13 mile

From 12th to 13th mile. South, at
varas, the N line of Section 20224
250 varas West of the N E Corner.
at 170 varas S. of a Stone marked K
On the Side of the Jayton and Ashburn
Road. At 1900 varas an Earth mound
and 2 pits fore and aft. a mes marked
K bears S 25° E 16 varas.

14 mile $\frac{2}{3}$ From 13 to 14 $\frac{1}{11}$ mile South, at varas
the N line of section No 423 - 300, West
of the N.E. Corner, at 1900 varas an earth
mound and 2 pits, fore and aft, and a
mes past in the mound marked K to 14 M S
From which a mes tree marked K hrs
N 22° E & varas N.E. end of the Double
Mountains S 29 $\frac{1}{2}$ ° E \longrightarrow

15 mile $\frac{2}{3}$ From the 14 $\frac{1}{11}$ to the 15 $\frac{1}{11}$ mile South, at
varas the North line of section No
422. 350 varas West of the N.E. Corner
and at 1900 varas a mes past, earth
mound and 2 pits, from which a mes
marked K hrs S 3° W 30 varas, and
the S.W. end of the Double mountains, S 25° E
and the N.E. end S 34° E \longrightarrow

16 mile $\frac{2}{3}$ From the 15 $\frac{1}{11}$ to the 16 $\frac{1}{11}$ mile South, at
varas the N line of section No 321
400 varas West of the N.E. Corner, at
1900 past mound & 2 pits, fore and aft
from which a mes marked K 16 M hrs S 4 $\frac{1}{2}$ ° E
5 varas, S.E. end Double hrs S 29° E, and
the N.E. end S 37 $\frac{1}{2}$ ° E \longrightarrow

17 mile $\frac{2}{3}$ From the 16 $\frac{1}{11}$ to the 17 $\frac{1}{11}$ mile South,
at varas the N line of section No
420 - 450 varas West of the N.E. Cor-
ner. at 1900 varas, Past earth mound
and 2 pits. from which a mes marked
K hrs N 33° W 24 varas, Double hrs
S 32° E.

18 mile $\frac{3}{4}$ From the 17th to the 18th mile South,
at varas the N line of Section
no 419 - 500. varas west of the N.E. Corner,
at 1120 varas the North bank of Salt
fork, Riv, and at 1900 varas, a mes
post 5" x 5" x 5 ft, set in earth bet
between 2 pits, from which a red
point bears South 1284 varas, S.W.
end of Double mts S' 37 $\frac{1}{2}$ ' E, N.E. End S 46' E

19 mile $\frac{3}{4}$ From the 18th to the 19th mile South, at
varas the N line of see no 418
550 varas west of the N.E. Corner; at
1284 varas top of a high red point; at
1900 varas earth mound + 2 pits
from which a mes marked K. br
S 73' W 21 varas.

20 mile $\frac{3}{4}$ From ^{the} 19th to the 20th miles South; at
varas N line of see 417 - 600 varas
west of the N.E. Corner; at 1900 varas
an earth mound and 2 pits; from
which the S.W. End Double mts brs
S' 50 $\frac{1}{2}$ ' E, N.E. End S 60' E.

21 mile $\frac{3}{4}$ From the 20th to the 21st; South, at
varas the N line of see no 416
1150 west of the N.E. Corner, at
1200 varas striking Creek, at 1900
varas, an earth mound + 2 pits, from
which a mes marked K brs S 2' E 22
varas, S.W. End Double mts S' 61 $\frac{1}{2}$ ' E

22 mile $\frac{3}{4}$ from 21st to the 22nd mile, South,
at varas the N line of Section no 415
700 varas west of the N.E. Corner. at
1900 was an earth mound and 2 pits
from which a mes marked K bears S 74 E
12 varas

23. mile $\frac{3}{4}$ from 22nd mile to 23rd South; at was
the N line of Section no 2, Washing-
ton County Ry Co 750 varas, west
of the N.E. Corner, at 1900 was an
earth mound and 2 pits on the South
line of said Section no 2, 1108 varas
East of the S' West Corner; 192
was East of the N.E. Corner of the W.H.
Butler Homestead Survey no 1, a mes
marked K bears S 89 W 107 varas, and
N.E. ^{the} Cor of sec no 2, East 792 was

24 mile $\frac{3}{4}$ from 23rd to 24th mile South at 894
was the South line of the W.H. Butler
Survey no 1, 45 varas S 75 W of the S.E.
Corner, (and 755 varas N 75 E of the
N.W. Corner of Sec no 419 H+T C Ry
Co, and 1145 varas S 75 W of the N.E.
Corner of Section no 419 B.P.K. 2, H. J. C.
Ry Co), at 1900 was an earth mound
and 2 pits, fore and aft, from which a
mes, marked K bears N 80 W 24 varas;
S'W. End Double mountain S 86 E.

2.5 mile $\frac{3}{2}$ From the 24th to the 25th mile, South,
at 1000 varas the North line of Sec no
369 Block 2 H + T C. Ry. Co 450 varas
N 75° E 1000 varas of the NW Corner,
and at 1400 varas a Cedar post, Earth
mound and 2 pits, from which a
mes marked K to hrs N 71° E 26 varas; SW
End Double mountains N 61° E, a do peak
N 64° E, and a do peak N 66° E

2.6 mile $\frac{3}{2}$ From the 25 to the 26th mile, South, at
1000 varas the North line of Sec no 369
1000 varas S 75° W of the N. E. Corner,
and at 1900 varas an Earth mound
and 2 pits, fore and aft. From which a
mes marked K bears N 65½° W 50 varas.

2.7 mile $\frac{3}{2}$ From the 26th to 27th mile, South; at
1000 varas the North line of sec no 334
532 varas S 75° W of the N. E. Corner,
at 1900 varas an Earth mound, and 2
pits, a mes marked K bears N 25° W 20
varas.

2.8 mile $\frac{3}{2}$ From 27th to 28th mile, South, at
1000 varas the North line of section no 335
1023 varas S 75° W of the N. E. Cor-
ner, and at 1900 varas an Earth mound
and 2 pits, ~~on a ridge~~ on a ridge
from which a cluster of Hackberry
trees marked K hrs N 40° E & varas
SW. End Double mountains N 37½° E
do peak N 39° E, do peak N 43½° E

29 mile, 3 From 28th to 29th mile. South, at
was the North line of section
no 324 ~~9385~~ was N 45° E of the SW
Corner, of (Sec 324) at 1900 was
an Earth mound and 2 pits, from
which a mes marked K 29 bears N 32° W
& was, S.W. End Double mountains
N 33° E, do N 35° E, do N 39° E

30, 4, 10, 13 From 29th to the intersection of the
North line of Fisher County line at
1661. was, the North line of Fisher
County. The S' East Corner of
Kent County, a Cedar Post
5" x 5" x 5 feet, marked S' E' C O R.
KENT. CO. Set in the Earth
feet from by, and an Earth
mound 2½ feet high, round it, and
3 pits. One East, one North and one
West. of the Post. From which a
Cluster of mes marked K bears
N 40° E 43 was; The S.W. Corner
of Section no 309, bears S 62° E 588
was. all mounds, monuments
and set stones not less than 2½ feet
high

Andrew J. Cook, Chani
Charles S. Hagerman
and Aaron T. Tette, Hlag, Hackman
H. G. Camp & B. C. Hardin, Surgeons

3300

1 It is ordered that H. J. Camp, and B. C. Hardin be
 2 appointed to run out and establish, as required
 3 by law the boundary lines of Kent County, and
 4 that upon the completion, and acceptance
 5 of this work at the Land Office that H. J. Camp, be
 6 paid the sum of nine hundred and eight, Dol-
 7 lars scrip held in escrow by the County Clerk,
 8 and issued to H. J. Camp, at a former term of
 9 this Court, for the same work. B. C. Hardin
 10 agreeing to assist in this work without
 11 compensation, at all, it is further ordered
 12 that that the south line of Kent be first
 13 established by actual survey, as required
 14 by law, and to do this the Surveyor, begin
 15 at the N. W. corner of Fisher County on the
 16 17th day of June 1895, between 10 o'clock a. m.
 17 and 4 o'clock p. m., and then to continue
 18 until the work is done, as rapidly as can
 19 be to suit the parties hereby appointed, and
 20 it is made a part of this order, that the Clerk
 21 shall at once transmit to the Clerk of the
 22 County Court of the several Counties, bordering
 23 on this County, having excepted, a certified
 24 copy of this order, and in case either
 25 of these parties, hereby appointed is un-
 26 able to act, from any cause the other is
 27 empowered to act.

1632-CERTIFICATE OF TRUE COPY

For sale by Geo. D. Barnard & Co., Prs., St. Louis. I-SE-E Class 6

THE STATE OF TEXAS,

County of Kent } I, Mark Hardin
 Clerk of the County Court of Kent County, Texas, do hereby certify that

the foregoing is a true and correct copy of the original Order made the 15th day of May 1895
by the Commissioners Court of Kent County, as appears on the
Minutes of said Court, record on page 187, a certified copy of which order
was transmitted to the several Clerks as per order of said Court.

Given under my hand and the seal of said Court, at Office in Clairmont,
 this the 9th day of August A. D. 1895

ATTEST: Mark Hardin Clerk.

By _____ Deputy.

Exhibit A.



Count 55857

Kent Co. Bdwy. line # 46



Plat of the South line of KENT, KENT. County

Dotted lines (red) = Co line

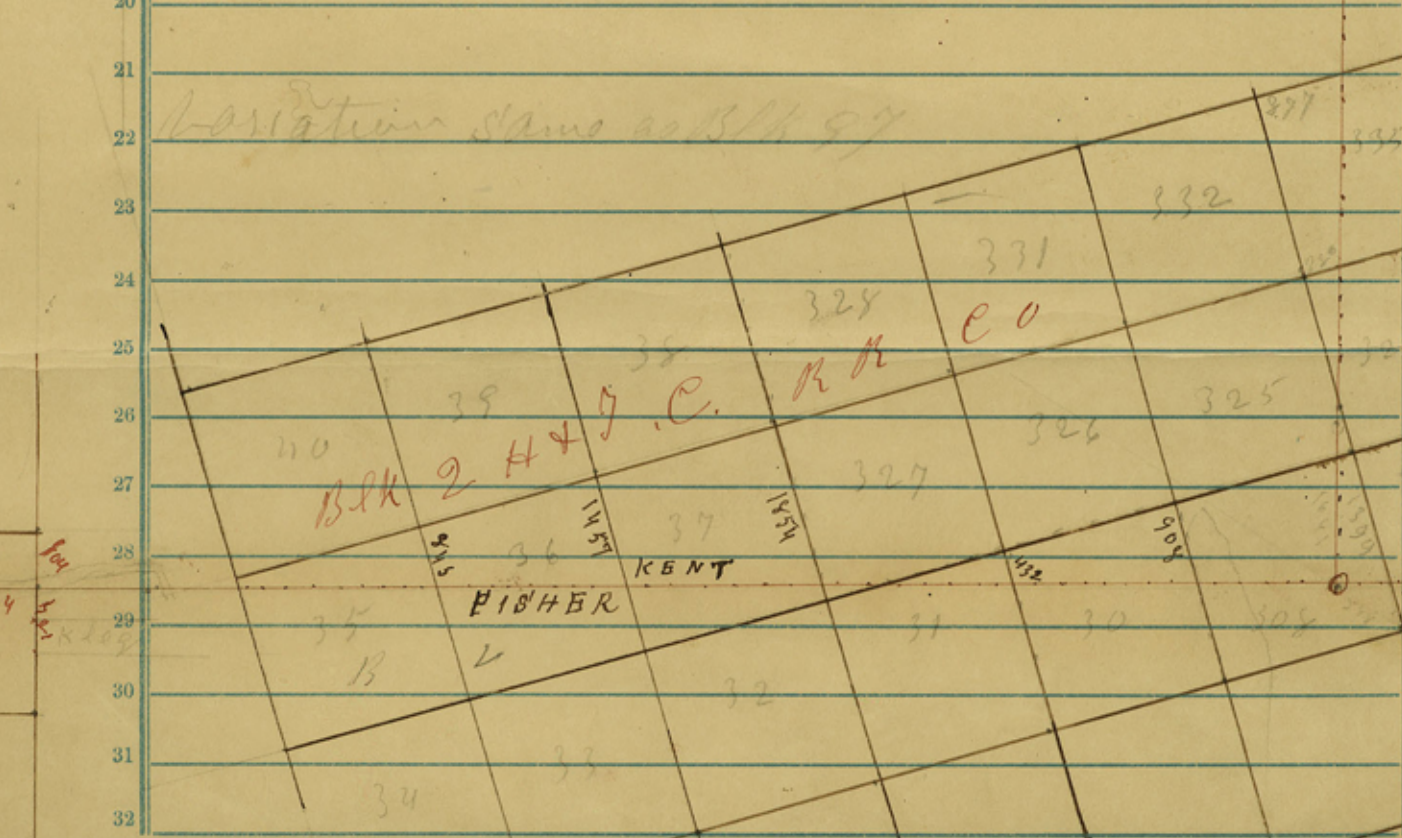
1		65	60	49	
2	A the = S' W. Corner	Blk	5 H & G	W. R. R. Co	
3	B " = N W Cor. of Fisher	64	61	44	
4	C the S' E. Cor of Kent.				

Entire line = 29 no. 1738, 2000

9	697	698	699	700	701	702	703
10	Blk	97	H & G	T. C.	R. R.	Co	

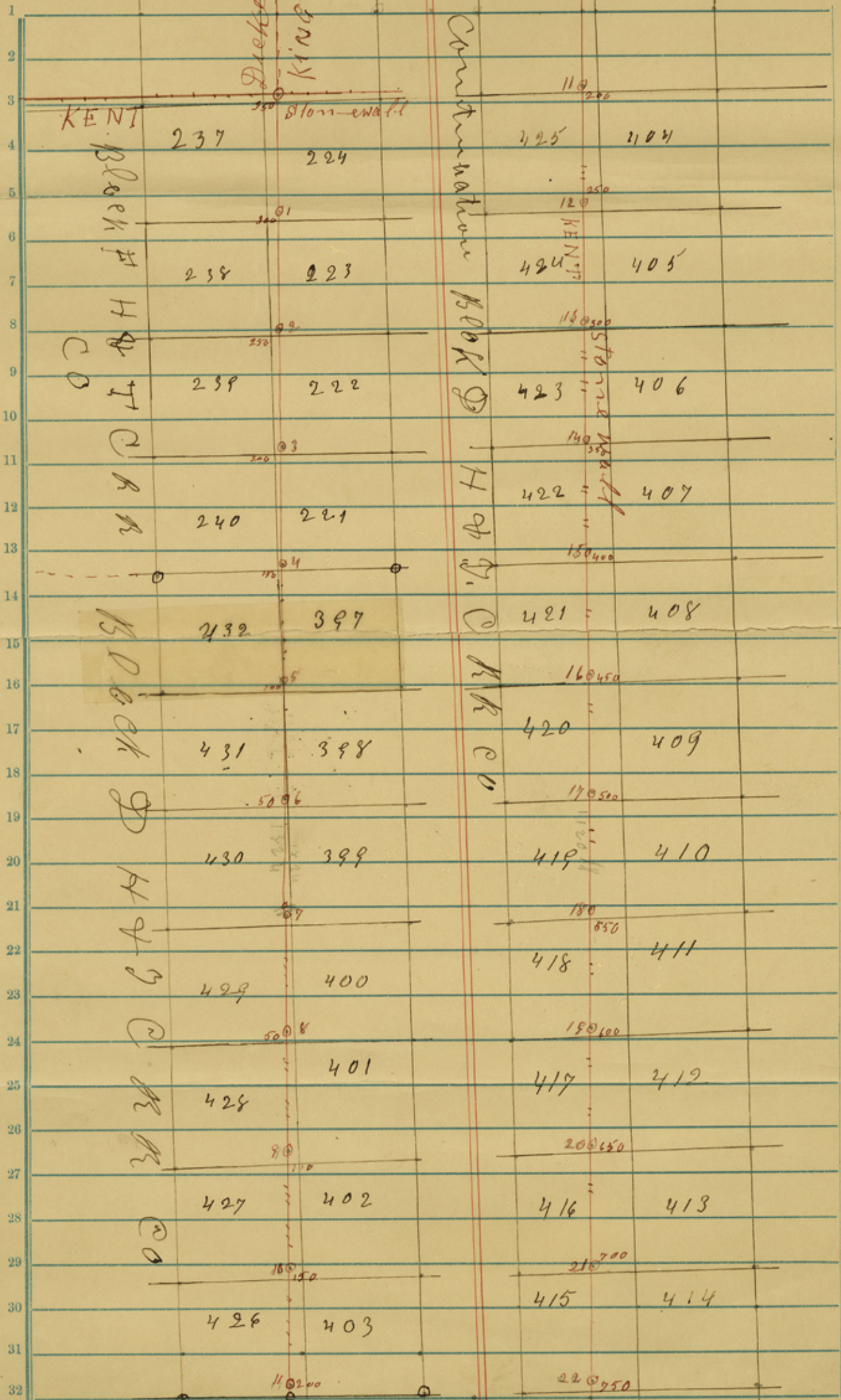
13	704	705	706	707	708	709	
14	Block	97	H & G	T. C.	R. R.	Co	710

18	50	51	52	53	54	643	640
19	Blk	K T	A Thompson			Blk	97

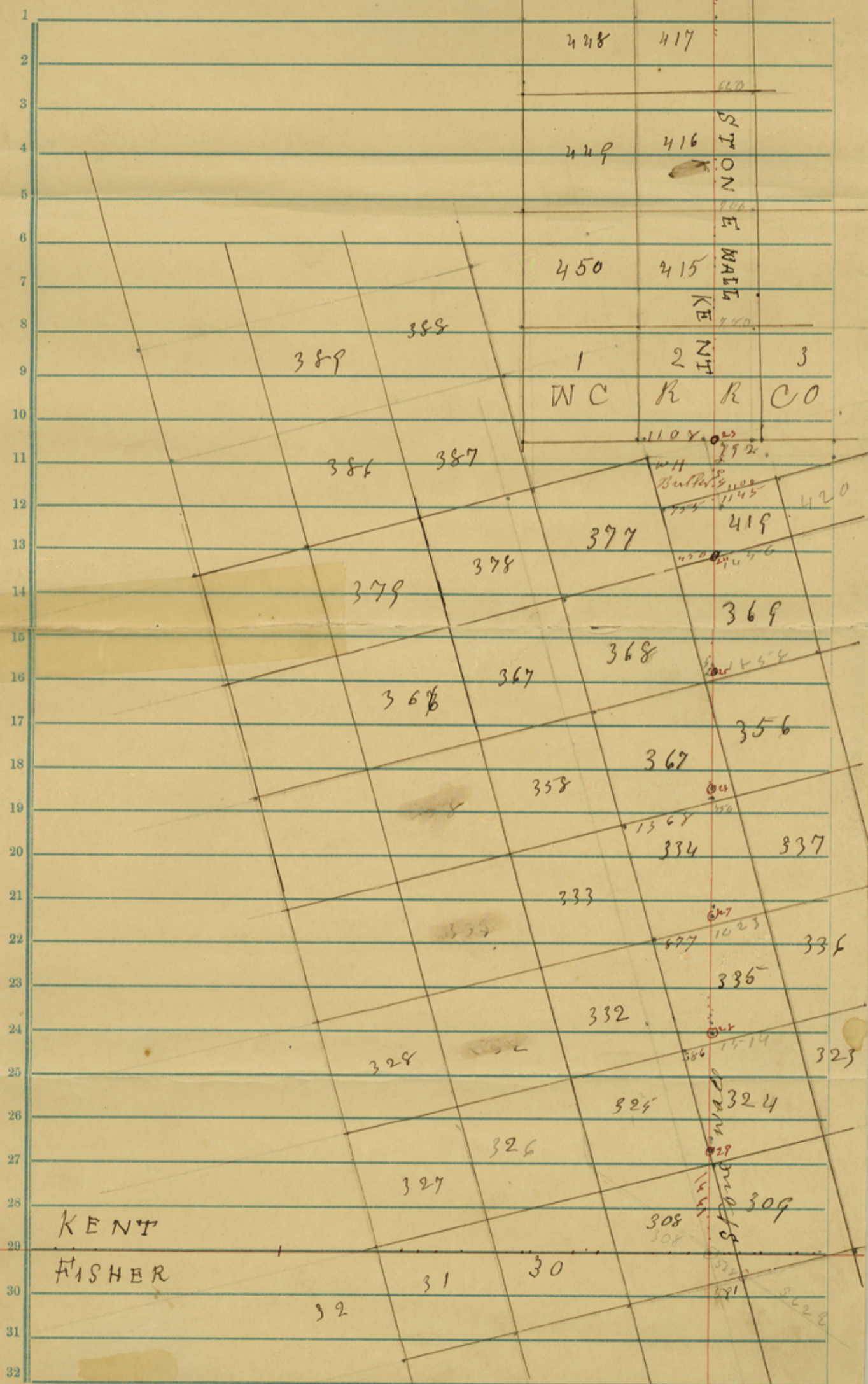


Sewry
Fisher

plat of the East line of Kent



Plot of the East line of KENT



Kent Co Bdry Line 46

7-27-1895

Kent Co Bdry. Line #46

County 55862

1
2
3
4
5
6
7
8
9
10
11
12
13
14
15
16
17
18
19
20
21
22
23
24
25
26
27
28
29
30
31
32

H. J. Camp & B. C. Hardin
Surveyors duly appointed to
establish and survey the boundary
lines of said Kent County was
made as set forth in the above
field notes and plats. Witness
our official signatures, this
27th day of July AD 1895
H. J. Camp
B. C. Hardin
Surveyors

State of Texas }
County of Kent }
I, Mark Hardin Clerk of
the County Commissioners Court
of said County of Kent
here with Certify that the
foregoing 30 pages is a true
copy of the original now on file
in my office and approved by the County
Commissioners Court of said County, and ordered
to be recorded in the minutes of said
Court, which is duly recorded in said
minutes, ^{Book one} in pages 196-210 inclusive
Witness my official
signature and seal
this August 12th 1895
Mark Hardin
Co. Clerk Kent County Texas

30

See copy of
Judgment of
in Ky. in
also 42(25)
filed 5/13/21
Co. Boundaries
SW. Q. R. 627
5
4, 4a, 4b

Fieldnotes

of the East & Westline & part of
S. line of Kent County.

Filed in the General Land Office

August 16th 1895

[Handwritten signature]

The West & Southline of
Kent Co. examined and approved.

Septemb. 20th 1895

C. W. Pressler

In regard to the Eastline or Westline of
Stonewall Co. agreed upon by both Counties

Kent Co. having complied with law is
hereby declared to be a separate Land District
Octob. 1st 1895 C. W. Pressler

abstracts corrected on, A. E. & W. M. Stumardis
10/18/95
B. A. Blainmont

