

4

KAD
15
OCT
1893
TEXAS



How W. C. Walsh
Comm Gen Land Office
Austin
Texas

Comm

Oct 17. 93

AUSTIN
OCT
16
1893

Kaufman

Rockwell

Co Line

Kaufman Co Bdry Line 4

Office of P. M. LEWIS,

County Surveyor of Kaufman County.

Kaufman, Texas Oct 13 1883

Hon W. C. Walsh } Sir

Comm Gen Land Office }

Austin Texas }

Your communication of
Oct 3 to hand and I beg

to state that there has never been any disagreement between
Mr S. A. Pruitt, Special Surveyor of Rockwall Co, and I
in regard to the locality and identification of the so
called south boundary line of Rockwall County as shown on
maps in your office; That line has never been lost, - it is
well staked and marked, - But, as to its correct locality
is the question, That is what called for the survey, and
we only want it established according to the act
of the Legislature creating said Rockwall County,
and according to the field notes of the same as
laid down in the statute, - An actual survey upon
the ground proves that said line is not in the
proper place, - To locate said south boundary we will
first, ^{run} locate the S. E. Cor of Rockwall Co, - This, we
cannot locate according to your instructions, from
the fact & about 1400 or 1400' N 45° E is too indefinite to
base work of this character upon, The south corner of the
Graves is indefinite, from the fact, it is on a broad

Office of P. M. LEWIS,

County Surveyor of Kaufman County.

Kaufman, Texas

188

expansive prairie, and there exists doubts as to its true and correct location, but to take the point that is ~~mentioned~~ recognized only by some and locate the S E corner of Rockwall 1400⁰⁰ N 45° E of it, will not correspond with any thing that has ever been recognized as either the South or East boundary line of Rockwall Co, neither will it correspond with any of the calls in the field notes as laid down in the statute pertaining to Swiss County. It will not bring us due South of the S W corner of Hunt Co as the statute provides, which the accompanying plot shows, that was made from an actual survey upon the ground by Mr G. A. Powell and myself on the 31st of July last.

The plot will explain itself, — All we want is a survey according to field notes as laid down in the statute for the County of Rockwall as laid down by Kaufman, — We have nothing in our profession, neither do I know of any law whereby any one of the boundary lines of Rockwall Co is based upon the S E boundary line of the E Graves League
(over)

Hoping to hear from you at an
early date I am Sir as ever
your most obedt servt

P. M. Lewis

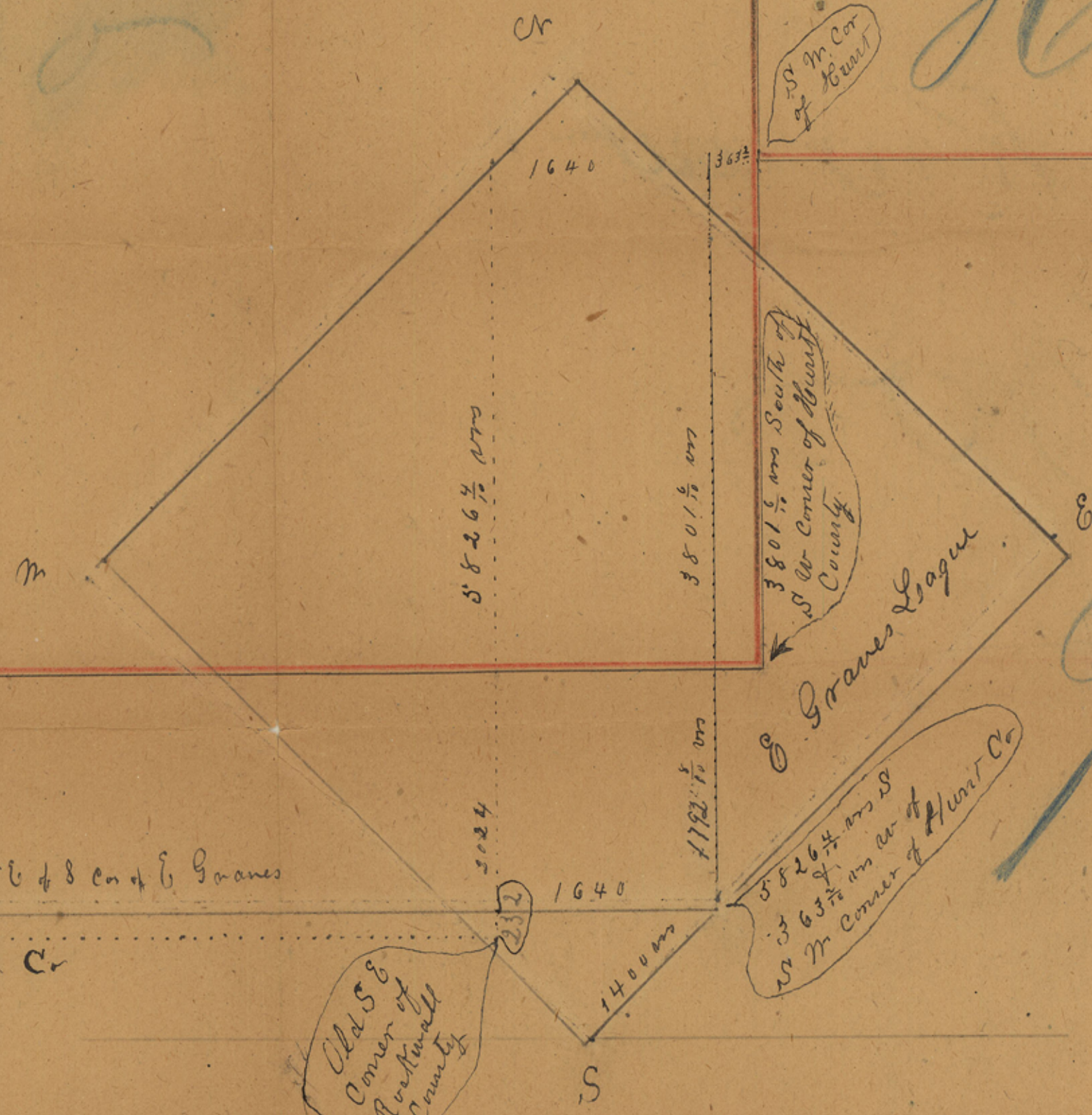
S. S. K. C. Texas

3
4
Hampden Co. B. & F. Co.

Rockwall Co

Hunt Co

Cauffman Co



This represents the line that would be if made from a point 1400 on N 45 E & S on E Graves

This dotted line represents the old S boundary line of Rockwall Co

Rockwell -
Kaufman
Kaufman Co Bdry Line 4

This plot is made from an actual
 survey made on the ground by
 G. A. Pruitt Special Surveyor of
 Rockwell Co and myself
 on the 31st day of July A.D. 1883
 J. M. Lewis
 S. S. H. Co Tex

Franklin Baugh
 No 45

Saml Mc Fadden
 which they has never been any
 dispute or contention

Ch

South boundary line of Hunt County

Geo J. Royal
 No 49

This represents the old South line of Hunt Co

South boundary line of Rockwall County

This line was established from S.W. corner of Hunt as established
 by L. H. Boyant on or after the 23rd day of April 1882

Elizabeth Goman
 No 50

2003

2004

1400

2003

Scale 1000 mts per inch

10 1/2

S

Handwritten scribbles and lines in the bottom right corner.

x/

Rockwell

S & Co Bdry Sim

7-21-1983

5

Kaufman Co Bdry Line 4