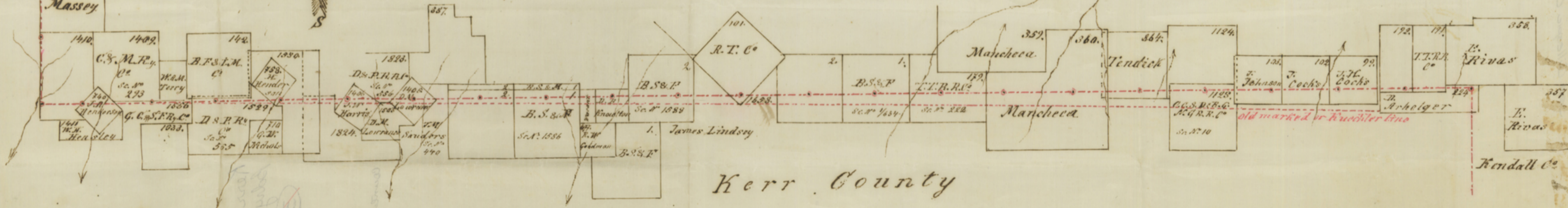
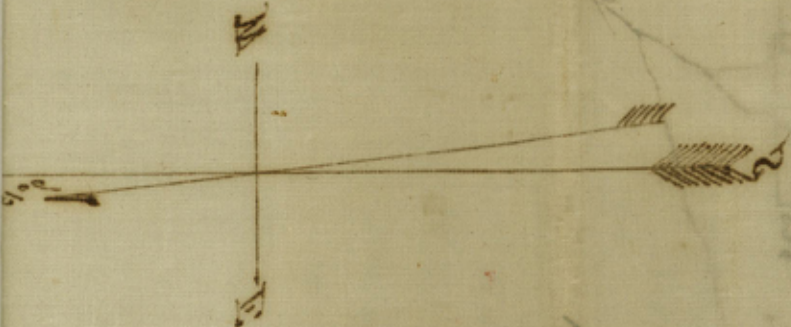


Gillespie County

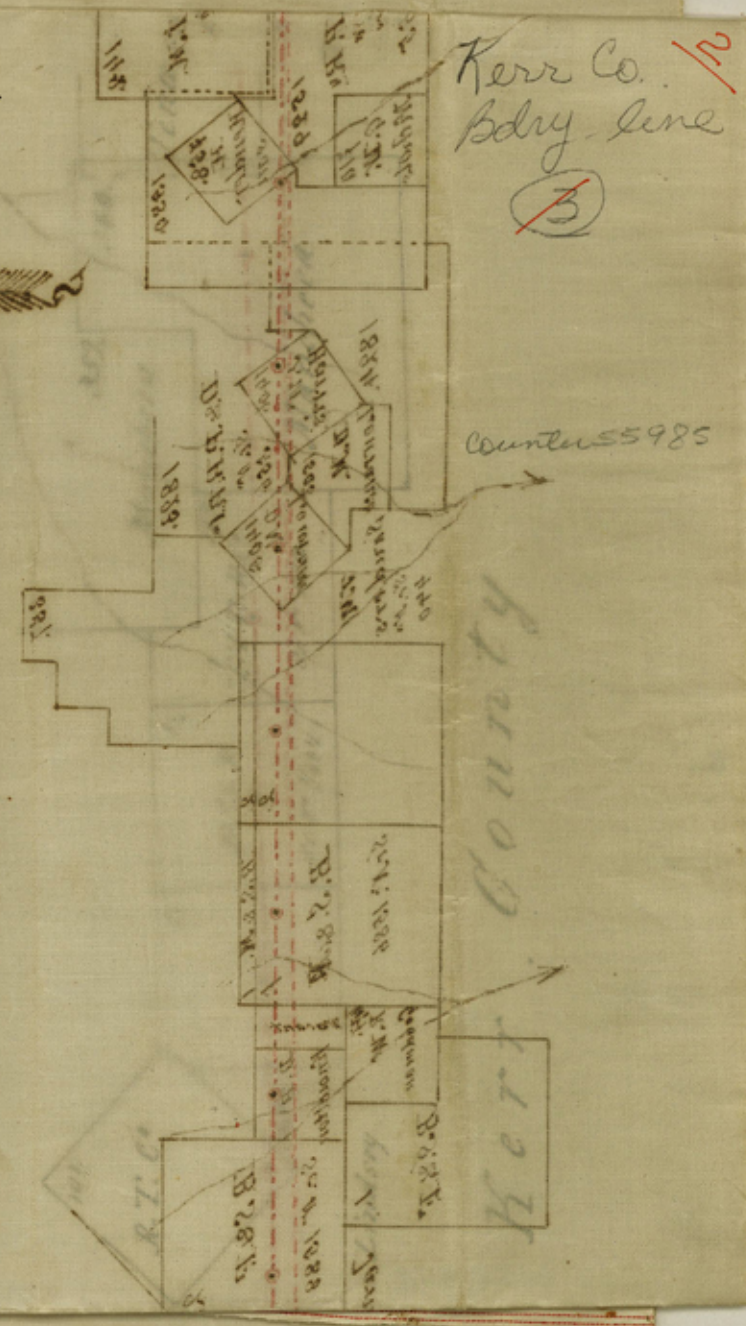


Kerr County

Kendall Co



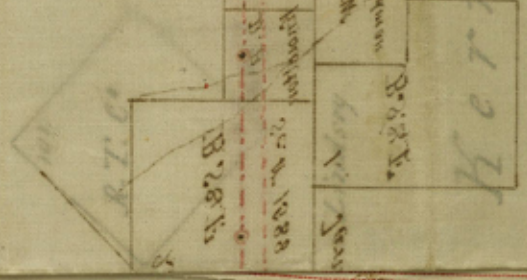
Lillestie County



Kerr Co. Bdry line
~~5~~

Counters 55985

Hert County



To the Hon Court of Kerr County

In accordance with an order of your Court made at its February Term A.D. 1889 in which I was appointed to represent Kerr County in establishing the boundary line between Kerr County and Gillespie County, I have the honor to report that I have proceeded in said matter, having met A. E. Schuchard Esq. the Surveyor for Gillespie County and assisted by George Cawley, Hans Borching, W. Deckett and Charles Runsky, we began the work at time appointed

Beginning at a point 18000 vs S. 17°W from where the old Bexar and Travis Dist. line crosses the Pecos river, said point being the S.E. cor. of Gillespie Co. as recently established. Thence running W. we ascertained that there is no old marked line in existence, same being considerably south of where the S. line of Gillespie Co. properly should have been marked: after arriving at the San Antonio and Fredericksburg road on at a distance of 24570 vs. west from the S.E. cor. of Gillespie Co. we ran south several hundred rods to the old line above mentioned. Thence running west we retraced the same for a distance 4000 or 5000 rods after which the old

line changes to the right at a distance
 of 11 396 vs. W. from said San Antonio road,
 at a point on W. line of Kendall Co &
 E. line of Kerr we found said old
 marked line between the two counties,
 we, the undersigned surveyors could
 not agree on the line to be run between
 Kerr and Gillespie counties. The
 Surveyor for Gillespie holding that
 the old line should be recognized
 and accepted as the true boundary
 between the two counties named for
 the reason that said line is found
 marked on the ground, while the
 Surveyor for Kerr County held that
 said line should not be recognized &
 accepted for several reasons to wit:
 1st. Because same is incorrect both in
 its beginning point & its course.
 2nd. Because no report of same has ever
 been made according to law.
 3rd. Because there is no legal record of same.
 4th. Because same is not the line designated
 and described by the act creating Gillespie Co.
 As in such cases provided by law the
 undersigned Surveyors reported the question
 at issue between them to Hon. R. M. Hull,
 Comr. of the Genl. Land office reporting
 also the facts in the case and praying
 for his decision; The Commissioner
 sustained the Surveyor of Kerr in his
 views of the matter to us being in substance

1) as follows:

J. H. Davis Spec. Sur. Dear Sir

Kerr Co. I replying to yours of —
date in regard to the
line between Kerr and Gillespie Counties
have to say that the result desired in
re-running the ^{old} lines between Counties is
to have them correct. If the line between
Kerr & Gillespie Co. as run by Kuchler
is found to be erroneous either in beginning
or course of the line it must be disregarded
in so far as the error exists, not withstanding
same may be found marked on ground.

R. M. Hall Comr. Gen. L. O.

Genl Land office

Sur A. E. Schuckard Esq

Austin Tex July 29th 1899

Fredericksburg Tex Sir

Replying to yours of
25th inst I will state that the S. E. cor. of
Gillespie Co. established by the Gillespie &
Blancet Surveyors recently shows that
Kuchlers South line running from said
corner is also erroneous and the establishment
of a new line from the new cor. is required.

Reply

R. M. Hall
Comr.

After the Commissioners decision had been
rendered we again took up the work and
assisted by August Hinman, P. B. Gove
Chas. Schuman and Edgar Goss we commenced

1 at a point on the West line of Kendall,
 2 and E. line of Kerr lco before described
 3 and running as far north as we had
 4 run South in running to and attracting
 5 the old line above mentioned, we run to a
 6 point 35966. vs. due west from the S.E. cor.
 7 of Gillespie County and erected a stone
 8 monument for N.E. cor of Kerr Co. same
 9 being marked N.E. Cor. K. Co fr. wh. a Span.
 10 Oak 3 in dia. marked E. brs N. 75° W.

11 $1\frac{3}{5}$ vs.

12 thence West at 694 vs. crossed E. B. L. Surv. No. 191.

13 T. T. Ry Co. 159 vs. north of S.E. cor. & 1713 vs.

14 South from its N.E. cor. No. 192. and 1713 vs.

15 S. from N.W. cor. No. 191. at 1908 vs a stone monu-

16 ment marked I. M. N.E. K. fr. wh. a Span. Oak

17 4" N. 20½ W. 11½ vs a do 4" S. 64½ W. 12½ vs.

18 thence West at 694 vs. pt. fr. wh. N.W. Cor. No. 227

19 D. H. Helger brs. S. 159 vs. at one mile 774 v.s.

20 crosses W. line of No. 192 & E. line of No. 99.

21 J. N. Coocks 159 vs. north from S.W. cor Surv. No.

22 192. & 1606 vs south from N.W. Cor same &

23 420 vs. N. from S.E. cor No 99 & 967. vs. S from

24 its N.E. Cor. at 2 miles stone monument

25 fr wh. P.O. 14" S. 77 W. 3½ vs. do 16" N. 16½ E

26 16. vs. Thence West at 225 vs. crossed W. line

27 No 99 do E. line No. 102. 420 vs. N. from S.W. No

28 99 do S.E. No 102 and 967. vs South fr. N.W.

29 No. 99 do N.E. No. 102, at 510 vs. west prong of

30 Bear Creek at 1620 vs. cross W. line No. 102 &

31 E. line of Jesse Johnson Surv 397 vs. hfr.

32 the S.W. Cor. No. 102 do S.E. of Jesse Johnson

at 3 miles stone monument fr. wh. P.O. 14"
 1 S. 86 E. 7³/₅ vs. do 16" N. 89. E. 22 vs.
 Thence West at 1015 vs. E. line no 1124 H. H. Henrich
 3 176 vs. S. fr. S. E. cor no. 1123 do N. E. No. 1124
 4 at 1064 vs. W. line Jesse Johnson 397 vs. fr.
 5 S. E. cor at four miles stone monument
 6 fr. wh. L. O. 20" N. 9. E. 20 vs. S. fr. O. 8" S 57 W 21 vs
 Thence N. at 897 vs. crosses the line No. 1124. 176 vs.
 8 south from its N. W. cor at Four miles 111" vs.
 9 W. line no. 1123 do E. line no. lex. Tindrick
 10 214 vs north fr. its S. E. cor at 4 miles 1240 vs.
 11 crosses branch at 5 mile stone monument
 12 fr. wh. a L. O. 8" N. N. N. 52¹/₅ vs. L. O. 10" S 53. W 12 vs.
 Thence West at 1160 N. line no. 964 do E. line no 554
 14 C. E. C. E. Mutschke 214 vs. N. from its S. E. cor
 15 at 1260 vs. crosses W. line no 554. 214 vs. N. fr.
 16 its S. W. cor. Same being E. line no 360 in
 17 name of Manchozen at 6 miles stone monument
 18 fr. wh. a wild cherry 4" S 35. W. 36 vs & a L. O.
 19 3" N. 23¹/₂ W 13³/₅ vs.
 Thence N. at 120 vs. divide middle and East prong of
 21 Wolf creek. at 1000 vs. middle prong of same
 22 at 7 miles a stone monument fr. wh. a
 23 B. J. 5" N. 35 W. 8 vs. & a L. O. 18" S. 28 W 48 vs.
 Thence N. at 476 vs. crosses W. line no. 360 do E. line
 25 no 180. 58. 3 vs. S. fr. N. E. cor. no. 180 do N. W. No.
 26 360 at 604 vs. W. line no. 180. do. E. line no 179
 27 583 vs. S. fr. its N. E. do N. W. no. 180. at 700 vs.
 28 branch at 1400 vs. divide of middle &
 29 West prong Wolf creek at 8 miles stone
 30 monument fr. wh. a Sp Oak 10" N. 58. W.
 31 6²/₅ vs. & a L. O. 5" S. 8. 2. E. 19⁴/₅ vs.
 32

BELFAST LINEN
 FROM GEO. D. BARNARD & Co
 ST. LOUIS.

(6)

1 Thence N. at 106 vs. point fr wh S.W. Cor
 2 No. 359 Manchacca brs N. 583 vs. at 705 vs.
 3 top of bluff at 780 vs. Kerrville and
 4 Frederickburg road at 810 vs. W. from Wolf
 5 Creek at 834 vs. E line Sur. No. 1. & W line
 6 No. 179. at 9 miles stone monument fr wh
 7 a P.C. 12" N. 82 W. 8 vs. B.J. 16" S. 34 E. 6 $\frac{2}{5}$ vs.

Thence 8 N. at 910 vs. W. line No. 1 do E. line No. 2
 9 1100 vs. S. fr. N.W. Cor. No. 1. do. N. E. No. 2. at
 10 1850 vs. branch at 10 miles a stone monument
 11 fr wh. Doub. B.J. 18" N. 83 W. 18 $\frac{3}{5}$ & L.O. 4".
 12 S. 73 $\frac{1}{2}$ W. 3 $\frac{1}{5}$ vs. Thence N. at 681 vs. point
 13 fr wh. E. Cor Sur. No. 101. ~~No. 43 E. 500 vs~~
 14 R. T. Co. Bds. L. 1015 vs. at 910 vs. crosses
 15 W. line No. 2. do. E. line No. 1658 James
 16 Lindsey 800 vs. N. fr S.W. Cor No. 2. at
 17 1636 vs. W. line No. 1658 do E. line No
 18 101 N. 43. E. 500 vs fr. its S. cor and S. 43. W.
 19 1400 vs. fr the E. cor at 11 miles a stone
 20 monument fr wh. a ced 15" N. 67 $\frac{1}{2}$ E
 21 5 $\frac{3}{5}$ vs. ced. 3" S. 18. W. 3 $\frac{1}{5}$ vs

Thence 22 N. at 1498 vs. crosses W. line No. 1658 do
 23 E. line No. 2. 728 vs. N. fr its S. E. cor. &
 24 1172 vs. S. fr. its N. E. cor. at 12 miles stone
 25 monument fr wh a L.O. 6" N. 7 $\frac{1}{2}$ E. 19 $\frac{4}{5}$. L.O.
 26 5" S. 7 $\frac{1}{2}$ W. 10 $\frac{4}{5}$ vs.

Thence 27 N. at 1498 vs. crosses W. line No. 2. do E. line
 28 No. 726 L.B. Knowlton 222 vs. S. from its
 29 N. E. cor at 13 miles stone monument fr
 30 wh Sp. O. 6" N. 7 W 3 $\frac{3}{5}$ vs. Sp O. 3" S. 32 E. 4 $\frac{2}{5}$ vs.

Thence 31 N. at 542 vs. W. line No. 726. 222 vs. S. fr its
 32 N. E. cor at 923 vs. crosses E. line No. 1. B.S. 49.

410 vs. S. for S. line Sur. no. 358 & 205. vs. S. fr
W. E. cor. said Sur no. 1. and 1695 vs. N. for
its S. E. Cor. at 1125 vs. crosses Town Creek
Road at 14 miles Stone monument fr wh.
Sp. C. 4" h. 83 Ft. 13 vs. a walnut 2" S. 73 1/2 W.
12 vs.

Thence W. at 923 vs. W. line no. 1. do. E. line no. 2.
205 vs. S. fr W. W. cor. no. 1. do. W. E. no. 2. 205. vs.
~~S. fr. W. W. cor. and 1645 vs. N. for S. W. no. 1.~~
do. S. E. no. 2. at 1455 vs. Divide between Town
and Goat Creek. at 1782 vs. point fr wh
S. E. cor. no. 357 fr wh. 410. vs. at 15 miles
Stone monument fr wh. aced. 2" h. 51. E.
7 1/2 vs. a walnut 2" S. 4 1/2 Ft. 13 2/5 vs.

Thence W. at 660 vs. road at 675 vs. E. Goat Creek
at 923. vs. W. line no. 2. do. E. line no. 1927.
at 1373. vs. cross W. line no. 1927 do E. line
no. 1405. J. M. Lawrence. h. 47 1/2. W. 125 vs.
from the E. cor. said Sur. no. 1405. at 1690 vs.
cross middle prong Goat Creek at 1890
main prong Goat Creek at 16 miles stone
monument fr wh. a L. C. 15" h. 63 1/2. W. 43 2/3
vs. do. 10" S. 11. Ft. 14 2/5 vs.

Thence W. at 562 vs. W. line no. 1405. h. 42 1/2. E. 190 vs.
fr wh. its W. cor. said W. line being also a line
of no. 7823 D. P. R. R. cor. at 689 vs. pt. fr wh
W. cor. no. 1405 fr S. 140 vs. at 864 vs. pt. fr wh.
E. cor. Sur. no. 1406. J. W. Harris. S. 140 vs.
at 1054 vs. crosses line no. 1823 do E. line no. 1406
h. 54. W. 238, vs. fr E. cor. at 1110 vs. Goat Creek
Road at 1560 vs. West prong Goat Creek.
at 1600 vs. high bluff at 17 miles a stone monument

(8)

1
 2
 3
 4
 5
 6
 7
 8
 9
 10
 11
 12
 13

Thence
 fr wha cct 10" R. 63. W. 5 VS V cct. 818. 18 W. 11 VS.
 W. at 87 VS. line no. 1406 also line no. 1823.
 D. & P. RR. lev. S 36. W. 526 VS fr h cor 1406
 at 290 VS. crosses line survey no. 1824. 10 VS
 S. fr its N. E. cor. at 1814 VS W line 1824 do
 E. line no. 1530. D. & P. RR. lev. 10 VS. S fr h. W.
 cor. no 1824. & 1294 VS. S. N. E. cor no 1530.
 at 1877. VS. crosses W line no. 1530 do E.
 line no. 758. Howard Hendersons R. 50. E.
 240. VS. fr its S. cor. at 18 miles a
 stone monument fr. wh. cd 14" S 30 W
 19 3/5 and chimney of Howard Hendersons
 house bro. N. 28 1/2 W. 320 VS.

14
 15
 16
 17
 18
 19
 20
 21
 22
 23
 24
 25
 26
 27
 28

Thence
 W. at 359 VS. W line no. 758 R. 50 W 290 VS.
 fr its S. cor. & S. 50. E. 660. VS. fr its N. cor.
 said W line being also the E. line no.
 1529. at 863 VS. pt fr wh w. cor. said
 sur no 758 bro N. 42 5 VS. at 949 VS.
 pt fr wh S. E. cor no. 142, bro N. 87 VS.
 at 19 miles a stone monument
 S. Q. 4" R. 54. E. 3. Sh. Q. 2" S. 12 1/2 E. 2 1/3 VS.
 Thence W. at 780 VS. crosses W line no.
 1529 do E. line no. 1556. 87 VS. S fr h. W.
 no 1529. and 39 VS. S fr h. E. cor no. 1556
 at 872 VS S. E. cor W. A. Mc Terry's sur
 bro N. 39 VS. at 20 miles stone monument
 fr wh acher 4" S. 65 E. 3. VS. Sp. Q.
 3" R. 82 E 3 VS

29
 30
 31
 32

Thence
 W. at 1082 VS. crosses line no. 1556 do
 E line no. 740. J. A. Henderson N. 45. W.
 300 VS. from its E. cor. at 21 miles a

84 W. Henderson's R. 50 W. 290 VS. at 1082 VS.

133

stone monument fr wh a cher. 5° S. 7. E.

8 2/3 vs Va L.O. 4° N. 13. W. 28 vs.

Thence N. at 42 vs crossing west line No 740 N.

45. E. 300 vs. from its W. cor. said line

being line also of Sur No 1410. at 21 miles

1134 vs. a stone monument on N. slope of

mountain made for S.W. cor. of Gillespie

Co and marked S. W. Cor. G. Co. fr wh a

Cher 6° S. 10. E. 12 vs. & Cher 6° N. 79 1/2. E. 25 1/2 vs.

Thence N. at 125 vs a dry branch at 700 vs. leave

same at point of mountain between two

dry branches at 1 mile stone monument

marked I M. S. W. Co Sp. O. 4° S. 21 E. 19 vs do 5° S.

23 E. 19 1/2 vs.

Thence N. at 120 vs. crosses N. line No. 1410 & S.

line No 29. J. V. Vasssey 36 vs. E. from N. W.

cor. No. 1410. do S. W. No 29. at 2 miles

a stone monument fr wh a L.O. 16°

S. 47. E. 10 2/5 vs & a do 16° N. 37 1/2 W 76 2/5 vs.

Thence N. a 129 vs crosses N. line No. 29 & S. line

No. 33. S. B. Turner 46 vs. E. from N. W. cor

cor No 29. & S. N. V. No. 33. at three miles

stone monument fr wh. a L.O. 18° S. 27.

W. 26 3/5 vs & B. J. 8° 2'. 25. E. 14 2/5 vs.

Thence N. at 114 vs. crosses N. line No 33. & S. line

No 26, 30 vs. E. from S. W. No. N. do. N. W.

No 33. at 4 miles a stone monument

fr wh L.O. 16° N. 46. E. 10. do. 8, 77 1/2 W 31 1/2 vs.

Thence N. at 98 vs. crosses N. line No. N. & S. line

No. 444. 16 1/2 vs. E. from N. W. No 26 do S. W.

No 444. at 516 vs. crosses N. line No. 444

Dr. N. line No 1. C. C. D. & R. G. N. G. Ry. Co.

1 do. S. line no. 3. C.C. D. & R. Ry. Co.
 2 60. vs. N. from N.E. cor. no. 7 & 510 vs. W.
 3 from S.E. cor no. 3 at 5 miles a stone
 4 monument fr. wh. a L.O. 3° N 71½ E. 14½ vs
 5 do 14° S 68 W. 58½ vs.

Thence
 6 North at 1495 vs crosses N. line no. 3. 510. vs.
 7 west from its N.E. cor at 6 miles a stone
 8 monument fr. wh. L.O. 11° N. 75. W. 19. L.O. 5°
 9 N. 29. E 25½ vs.

Thence
 10 N. at 495 vs. crosses N. line no. 5. do. S.
 11 line no. 19. L.O. & N. Co. 871 vs. E. from
 12 S.W. cor. no. 19. & N.E. no. 5. & 10 24 vs N.
 13 from S.E. no 19. at 7 miles stone mon-
 14 ument fr. wh. a L.O. 20° N. 68½ W. 4½ vs
 15 & a P.O. 14° N. 56. E. 9½ vs.

Thence
 16 N. at 445 vs N. line sur. no. 19 & S. line no. 17.
 17 876. vs. E. from N.W. cor. no. 19. & S. W. no. 17 at
 18 8 miles a post squared well set in the
 19 ground three feet fr. wh. a P.O. 10° S 27 E.
 20 6 vs. a do 12° N. 72 W. 4½

Thence
 21 N. at 495 vs. N. line no. 17. do S. line no. 10.
 22 876 vs. E. fr. S. W. cor no 10. at 4 miles a
 23 stone monument fr. wh. a L.O. 10° S 68 W.
 24 104½ & P.O. 10° S. 4 S. 69 vs

Thence
 25 N. at 493 vs N. line no 10 & S. line no. 9. 876 vs.
 26 E. from S.W. cor. no 9. & N.W. no 10. at 10 miles
 27 a stone monument fr. wh. a L.O. 15° N. 39.
 28 E. 34½ & a P.O. 12° N. 85. W. 42½ vs.

Thence
 29 N. at 534 vs. N. line no. 9 vs. line no 722. 876 vs.
 30 E. from N.W. no. 9. & 324 vs. E. from S.W. no. 722.
 31 a stone monument for S.E. cor. of Kinable
 32 & N.E. cor of Kerr County marked S.E. cor

1 K Co. from the S.P. cor No 722 to S. E. 850 1/2
 2 v a L. O. 20" N. 83 W. 37 3/4 vs. a P. O. 20" N. 15"
 3 E. 44 vs. a No 14" N. 14 E. 40 1/2 vs.
 4 Bearings on North and East side
 5 marked G. on South and West side
 6 marked K Var 90 1/2 E.

7
 8 The A. E. Schuchard Spec Suror for
 9 Gillespie Co. & J. H. Davis Spec Suror
 10 for Kerr Co. do hereby certify that the
 11 above and foregoing report and
 12 Field notes represents truly and
 13 correctly the work done by us in
 14 the matter of the boundary line
 15 between Kerr and Gillespie Counties.
 16 Frederickburg Tex A. E. Schuchard Spec Sur. S. Co.
 17 Nov 12 1889 J. H. Davis Spec Sur. K. Co.

18 Examined and approved in open court this
 19 Nov 19th 1889
 20
 21 A. G. Garrett County Judge
 22 Kerr County Texas
 23 A. M. Furland W. Remschell Com. No 1
 24 Jas. C. H. H. Com. No 2
 25

THE STATE OF TEXAS,
 County of Kerr } I, A. M. Furland
 Clerk of the County Court of Kerr County, Texas, do hereby certify that
 the foregoing is a true and correct copy of the original Report of Survey of Boundary
my line of Kerr & Gillespie Counties made by action
of the Commission Court of Kerr Co. Texas Nov 18th
1889
 now on file in my office.
 Given under my hand and the seal of said Court, at Office in Worville
 this the 19 day of Nov A. D. 1889
 ATTEST: A. M. Furland Clerk.
 By _____ Deputy.

Count
55996

2/ Kerr Co Bdry Line 2
Kerr Co Bdry Line

Gillespie & Kerr

32 31 30 29 28 27 26 25 24 23 22 21 20 19 18 17 16 15 14 13 12 11 10 9 8 7 6 5 4 3 2 1

These field notes approved by
the Commissioners Court of
Kerr Co and the County Judge
W. S. Garrett, call for the N.E. corner
of Kerr Co at a point which is
one North and one mile due West
from the public square at Bonhomie
— also claimed by Kendall Co.
as the correct corner.

C. W. Pender

Filed in the Genl Land Office
May 21st 1890
R. O. Shuley
Chief Clerk.