

Side No 56

Boundary lines between
the County of

Samar

and the Counties of

Fannin & Red River

Line of Samar and Fannin
Filed May 26th 1885.

Abstract Corrected and Copy
handed the Comp^y Aug. 24/85

Line between Samar & Red River
Filed Aug. 29/85

Abstract corrected Sept 2/85
and Copy handed Comp^y

County Line,
the Counties of
Lamar and
Red River.

Abstract corrected
Sept 2nd 1885
Beaumont

Rec'd Examined
& Approved
Aug 29. 85
W. H. Hask.
Comm

The State of Texas

Lamar County Be it remembered, that at a term of the Honorable the Commissioners Court of Lamar County Texas, begun and held according to law, at the Court house of said County on the second Monday of August AD 1884, among others the following proceedings were had viz:

August 11th AD 1885

In the matter of Establishing the County line between Lamar and Red River Counties Report of Surveyor On this day Thomas H. Skidmore Surveyor of this County, who was heretofore appointed by this Court to survey, mark, and establish and define the County line between the Counties of Red River and Lamar, presented and filed his report thereof in these words:

To the Hon the County Commissioners Court of Lamar County Texas:

The undersigned Thos. H. Skidmore County Surveyor of Lamar County having at the November Term of your Court, in 1884, been appointed Commissioner upon the part of said Lamar County, to locate and survey the County line between the Counties of Lamar and Red River, and David Rainey having been appointed by the Commissioners Court of Red River County as Commissioner upon the part

of Red River County to assist in said work, would
Respectfully offer the following report of our
work in obedience to said appointments:

March 4/85. We met at what was formerly
the mouth of Upper Pine Creek and the North
East Corner of the James Storchaw survey, and the
South West Corner of the M.K. Revere survey on
the right bank of Red River (which is the point
named in the act creating Lamar County) being
the point specified in your appointment, and
on the 4th day of March 1885 - the day designated
in said appointments - and finding that the right
bank of Red River had grown by accretion until
the mouth of Pine Creek is now fully 600 yards
East of where it was, when said Lamar County
was created, we agreed to begin at a point on
Red River due North from the point named above
(as the North East Corner of Lamar County) and
the point at which Allen Arguehark, began
the survey of said line in 1841.

And having ascertained the point due North of
the Storchaw and Revere corners, and at which
Arguehark began his survey of the County line;
we set a post to mark the same, the said Post
is Bois d'arc, is 8 inches square, 5 feet long, set
in the ground 3 feet, is marked on S.E. face
N.W. C. R. R. Co and on the S.W. face N.E. C. L. Co,
and in order that said post may not be washed

away, we set the same South at low water 160
varas and at high water 30 varas South of the
water line.

1st Mile: Thence we run South @ 1790 varas to
North Bank Pico Creek at 1820 varas, the South
bank at Stoneham and River corner, and com-
mencement of Co line as run by Uryuhart, at
1900 varas Set 1st mile Post marked 1 M.

2nd Continued on South with the Uryuhart
line at 1570 varas crossed Pico and Pico Bluff
road at 1900 varas. Set 2nd mile Post marked 2 M.

3rd On South at 1900 varas Set 3rd mile Post
marked 3 M.

4th On South at 35 varas Lower or little
Pico Creek 10 varas wide at 136 varas passed
91 varas East of James Stonehams S.E. Corner
at 1900 varas Set 4th mile Post in Faulkners
field marked 4 M.

5th On South at 454 varas crossed Rivers South
line 94 varas East of its S.W. Corner, and a North
line of the William Bailey Survey 1839 varas
West of its E. N.E. Corner, at 1330 varas Burnett
Road via Hards and Faulkners, at 1900 v.

Set 5th mile Post marked 5 M.

6th On South at 1900 varas Set 6 mile Post
where a Post Oak brs S. 7° West 10 varas
and a Red Oak brs S. 36° E. 4 vs. Both marked
6 M. R. R. L.

7th On South at 1180 varas Pine Creek 10 vs
wide, C. nearly W. at 1250 same creek, C. nearly
North at 1340 varas Same creek C. E. at 1900 vs.
Set 7th mile Post, a sweet Gum brs N 47° W 8 1/2
vs a Bird's are N 35 E. 8 varas both marked 7 M.

8th On South at 6 vs crossed Pine Crk, C. S. E. at 190
vs crossed a South line of W^m Bailey Survey 15 1/2 varas
West of its S. S. E. Corner and the North line of J. Rop
Survey 15 varas East of its N. W. Corner and 79 varas
East of its W. Corner of Sec No 89. (by survey of
Red River Co) and N. E. Cor of Sec No 1.) in Lamar
County, which corners are on the Urquhart line,
at 200 varas Pine Crk C. W. at 1900 varas Set 8th
mile Post - a post oak marked 8 M. brs N. 22° W.
3 1/2 varas, at this point Urquhart line is 700 vs West,

9th On South - at 100 varas run 70 varas East
of S. E. Cor of Section No 1. and N. E. Cor of No 2
on Urquhart's line at 1175 vs crossed North
line of James Lanier Surv. 912 varas West of its

N.E. Cor and 16 varas west of J. Rosses S.W. Cor
and 44 varas East of Urquharts line at 1900
varas Set 9th mile Post, a Post O. Trs. S. 77 1/2
W 2 or mkd 9. M. and a red oak mkd x Trs
S 73 E 5 ors.

10th Qu Smith at 40 varas cropped Laurkins
Smith line and W. Davis Smith line 48 varas
East of his N.W. Corner on Urquharts line, at 260
varas a road (at 950 varas Pine Creek crossing
same seven times in the next 500 varas. Course
generally N, at 1360 varas cropped to H. Smiths
North line 248 varas East of its N.W. Corner at
1850 cropped Smiths South line 248 ors E of its
S.W. Corner and Isaac Gusts North line 1359
varas East of its N.W. Corner at 1900 ors, Set 10th
mile Post.

11th Qu Smith at 1685 varas cropped Gusts South
line 442 ors West of its S.E. Corner and L.
Duralis North line 680 varas East of his N.W.
Corner at 1900 varas 11th mile Post.

12th Qu Smith at 980 ors cropped Duralis South
line 37 varas East of Urquharts line and
W.W.W. Corner of Sec. No 93 and N.N.E.
Corner of Lamar County School Land
at 1200 varas passed S. line of Sutton St.

93 and S. H. Tomlinson N. line 20 vs E. of its
N. W. Corner on Urquhart's line and East line
of Lamar Co. school land at 1900 varas Set
12th mile Post 20 vs East of Urquhart's line

13th On South at 850 varas crossed Pines
at 1295 varas ^{W. of Pines} Pines & Saw Mills Road
and Saw Mills road, 12 varas East of Urqu-
hart's line at 1900 varas 13th mile Post 30
varas East of Urquhart's line a willow oak
mkd 13 M. RR. L S 18 N. 2 1/2 vs.

14th On South at 315 varas crossed Tomlinson's
South line 25 varas East of his S. W. Corner on
Urquhart's line and the East line of Lamar Co
School land, and Pines North line 25 vs E.
of his N. W. Corner at 415 vs 480 vs + 510 varas
crossed Wild Cat Creek C. S. E. 6 vs Wide at 810
vs Crossed Pines South line 15 vs East of his S. W.
Corner on Urquhart's line and D. K. Pines North
line 126 varas East of his N. W. Corner, @ 1900
varas 14th mile Post a Post Oak mkd 14 M.
RR. L S 70° N 19 vs.

15th On South at 260 varas Pines South line at a
N. E. Corner of Lamar County School land on
Urquhart's line at 1870 varas passed corner be-
tween Sects 98 & 99 at 1889 vs center of D. P. R. R.
at 1900 varas 15th mile Post a Red Oak mkd

15 m. R.R.L. brs S 25 N. 20 vs.

16th Au South at 580 varas S. S. E. corner of
Lamar School land 180 varas East of E. A.
Dickup N.E. Corner @ 1430 D.R. McDonalds
South line 5 varas West of his N.E. corner on
Urguharts line and west line of sec 100 @ 1-
1900 varas 16 mile Post a post oak marked
16 m R.R.L. brs N 67 1/2 W. 2 1/2 vs.

17th Au South at 1040 varas crossed Paris &
Clarksville road and D.R. McDonalds S.E. Cor
and J.P. Bassford's N.E. Corner on west line of
Sec 100 & Urguharts line at 1660^{rs} passed 4
varas East S.W. Corner of Sec 100 & N.W. Corner
of Moses Murreys Survey 102 varas West of the
N.W. Cor. of Moses Murreys Survey (yet Murreys Patent calls for 60 lines
while we find the same 98 vs East of Urguharts line) at 1900
varas S.W. 17th mile post where a Hickory on Ur-
harts line marked 17 m. brs E 16 vs.

18th Au South at 714 varas passed 2 varas East
of Urguharts line, and a N.W. Corner of Sec. 100
at 1430 varas passed S.E. W. Cor of Sec 100 and
N.W. Cor of Phillips R. Price at 1580 N. S. W. Corner
of Price on J. Price South line 120 varas West
of its N.E. Corner at 1900 vs 18 mile Post where
two post oaks both marked 18 m. R.R.L. bears
East, one 23 the other 26 varas.

19th On Smith at 800 varas passed 10 varas West
of 18 mile post in Arguhat's line at 995 varas
Hanas Creek 6 vs Side C. S. E. at 1900 varas 19th
Mile Post where a post oak mkd 19 M. Trs S.
40 E 5 varas another is mkd R. R. L. Trs N 62 E.
5 vs and a sub div corner of the Pew Sur is
East 120 varas.

20th On Smith at 420 varas a small creek 5 vs
wide C. S. E. at 1710 varas South line of Pew's
North Survey 120 varas West of its S. E. Cor, and
the North line of Pew's South survey 2175 varas
East of its N. W. Corner at 1810 varas enters edge of
Blossom Prairie at North side of Dr. Scales'
field at 1900 varas 20 mile post.

21st On Smith at 560 varas Paris and Pepsich
road at 1900 vs 21st mile post in Wallaces
field.

22^d On Smith at 180 varas Pew's South line 2175
varas East of its N. W. Corner and 2657 mesh from
the N. E. Cor of Prauntitt & Ryan at 1133 vs
crossed N line of J. C. Brown survey 342 varas
East of its N. W. Corner 0950 varas West of its N. E.
Corner at 1900 varas 22^d mile post

23^d Continued on Smith 325 varas crossed

Lamar Co. Boundary line #56
Perrins Smith line and James Burritt North line
950 varas West of his N.E. Corner at 900 varas
Burritt's South line 175 vs East of his S.W. Cor.
and Joseph Farris North line 953 varas west of
his N.E. Corner and 175 East from his N.W. Corner
at 1900 vs. Sit 23 mile posts.

24th On South at 1635 varas Farris South line
and D. Draper North line 200 varas West of his
N.E. Corner and 1700 varas East of his N.W.
Corner at 1900 varas 24th mile post.

25th On South at 350 varas Draper S. line of R. Pat-
tersons North line 198 varas west of his N.E. Corner
and 1702 varas East of his N.W. Corner @ 1030 vs
Carp De Park and Maple Springs road, at 1900 varas
25 mile Post

26th On South at 280 varas cut in timber at 380 vs
Mustang Creek, E. S. E. 6 vs wide, at 390 varas Pat-
tersons South line and Kings North line 1700 varas East
of his N.W. Corner at 750 varas. Kings South line 581
varas West of his S.E. Corner. and B.M. Ballards North
line 2336 varas West of his N.E. Corner and 2702 vs
East of his N.W. Corner at 1730 varas. Halesboro Summit
road at 1900 varas 26 mile post a willow oak
marked + hrs N. 5 varas and a post oak mtd
26 m R. R. L hrs S. 20 E. 21 vs.

27th. On South at 22 varas, Enters prairie
at 1900 varas. 27th mile post

28th) On South at 1870 varas Ballard South
line and A. Stephenson North line 1780 varas
East of his N.W. Corner at 1900 varas 28th mile
post where @ Black Jack mrd 28 M. R.R.L.
brs S 4 N. 114 varas.

29th. On South at 125 varas Enters timber at S. edge
of Bloppm Prairie 15 varas West of Urquharts line
at 200 varas Paris and Halster road at 1880 varas
passed Stephenson's South line 120 varas west of its
S.E. Corner, and 5 varas East of Urquharts line -
and J.C. Brum, North line 218 varas East of its
N.W. Corner and 335 varas West of its N.E. Corner
at 1900 varas 29 mile Post a post oak mrd 29
M. R.R.L brs S 27. N. 18 varas.

30th South at 935 varas crossed South line of
Brum and North line of W.F. Williams 218 varas
East of its N.W. Corner at 630 varas Paris and Jef-
fuson road at 1900 varas 30th mile Post a Post
oak mrd 30 M. R.R.L S. 79 E. 10 varas.

31st On South at 10 varas Williams South line 218.
varas East of its S.W. Corner and B.G. Hals North line
815 varas East of its N.W. Corner @ 963 varas Hals

Lamar Co. Survey line #56
Smith line 135 varas west of its S.E. Corner, and
the N.E. Corner Lamar County School land and
the N.W. Cor of J. M. Binion Survey on Urquharts
line at 1900 varas Set 31st mile Post a Red Oak
marked R. R. L. 31 M. Crs S. 6° W. 17 varas ado S. 30
W. 21 varas, — 5 varas East of Binions S.W. Cor
on Urquharts line.

32^d On Smith at 1036 varas crossed R. B. Crafts
Smith line and North line of J. Pope 16 varas West
of their corner on Urquharts line at 1900 varas 32^d
mile post, 10 varas East of Urquharts line,
a post oak marked 32 M. R. R. L. S 14. W. 16
varas.

33 On Smith at 200 varas Brushy Creek c S.E.
12 varas wide at 410 varas passed 24 varas East
of Popes S.E. and H. Kennedys N.E. Corner on Ur-
quharts line at 1377 varas passed 26 varas East
of Kennedys S.E. and J. Travissons N.E. Cor on
Urquharts line at 1900 varas 33 mile Post 18th
East of Urquharts line a willow oak marked
33 M. R. R. L. Crs S. 22 E. 12 varas a do marked
+ Crs N 86° W. 5 varas.

34th On Smith at 400 varas passed 8th S. E. of
Urquharts line at 1600 varas passed 3 varas East
of Urquharts line, at 1900 varas 34 mile Post

an Elm marked \dagger hrs S. 60 W. $2\frac{1}{2}$ vs and a post oak marked 34. M. R R L hrs. East 19 varas.

On Smith at 200 varas a post oak marked on N.E. face, S.W.C. R.R. Co and on N.W. face S.E. Cox L.C. where a Bois'dan mk S.W.C. R.R.C hrs S 40° E 9 varas and a Spanish Oak mkd S.E.C. L.C. hrs N 10 W 4 vs which post stands 25 varas North of the Center of Sulphur, 160 varas West and Eighty varas North of the Confluence of the two forks of Sulphur the point at which Urquhart's line crosses, and 30 varas East of the East line of the Francisco survey

We found by observation that the general course of the Urquhart line is by the bearing of the needle of Compass N. 8° 6' E For six miles we found the Urquhart line to be tolerably well run as it was generally through open ground, but on the last half of the seventh mile which was through Pine Creek Bottom (which was where he run the line covered with cane) that there is a deflection of 79 varas to the west, that line to say the least was very badly run as may be seen from the above field notes; but notably the last 600 varas of his line in which it deflected East 160 varas, but at the time he made the survey

This was caused by very rank Cañon.

The above line is spotted as the law directs, at the end of each mile with a 'V' or 'd' post 5 feet long & 8 inches square and set in the ground 3 feet, (Except beginning and last post which denote the corners of the Counties, and are marked as stated above) Each post is marked on the East face RR and on the South face O I M and number of miles, and on the west face L. The letters and figures being neatly cut in the wood, the face of the letters and figures being about one third of an inch, and cut one third of an inch deep, the letters and figures being about $3\frac{1}{2}$ inches in length, In running we were careful to note every object of note or permanence on the line and very careful to find all lines crossed by our survey and the distance they were crossed from their corners.

We first endeavored to run the old line as surveyed by Arguehail and having run 31 miles, and finding so many changes of course and the impossibility of keeping his line where the same was not plainly marked, and that we were in this endeavor often on our side, and then on the other of his line, that we decided to return to the end of the seven mile post, where we discovered the first serious defect in Arguehail's line, and continue

the line straight through without any deviation from course, or regard to Uzgl's line far than than to note our distance from it at noted points (which is noted in the foregoing field notes) we continued to run (the mean bearing $N 8^{\circ} 6' E$) the line to the end of the 23rd mile, from which our first line being straight to the end of the 31st mile where we began again and finished the work as stated in the above field notes, though from high water in the creek and Supter's bottom we were delayed till the last days in June in finishing the work.

Our line for the first seven miles is marked - Trees immediately in the line are marked on North and South sides with a blaze, ^{and the chop above and below blaze} And trees on each side near the line are marked on the side next the line with a blaze and two chops above and one below the blaze and from the end of the 7th mile line trees as above and trees on either side a blaze with one chop above and one below blaze.

Survey closed 30th day of June 1885.

L. L. Pappone and M. Hinds, Chainmen
B. M. Patterson, Flagman and J. H. McKay
markers

We Thomas H. Midmore and
David Rainey Surveyors do hereby
certify that the above field notes truly
describe the marks natural and
artificial on said County line
and the line was run according
to law and that the accompanying
plot is a true and correct map of
the said line and of the surveys
through which it passes.
This August 5th 1885.

Thomas H. Midmore
Comr for L. C. T.

David Rainey Comr.
for R R Co Tex

Examined: Report of Survey of Lamar Red
River Co. La.,

J. H. Skidmore & D. Rainey Surveyors,

Filed August 11th 1885. Chas. B. Pegues Clerk

By A. Pollard D.C.

Report Examined and Entered
recorded August 11th 1885

And it appearing to the Court that
said report has been made in accordance with
the orders of this Court - that said Surveyors
have complied with the law in this behalf -
It is thereupon ordered by the Court that
said report be, and the same is hereby
ratified, approved, received and confirmed,
and is by order of the Court herein recorded.
It is further ordered by the Court that
the Clerk of this Court record said report
and diagram accompanying the
same according to law - and that he
make and return to the Commissioner
of the General Land Office a copy
of said report according to the statute.

Lamar Co. Survey line # 56

The State of Texas
Lamar County I, Chas. B. Peques
Clerk of the County Court of said County,
and Ex-officio Clerk of the Commissioners
Court thereof, do hereby certify that the forego-
ing annexed sixteen pages and the map hereto
attached are a true and correct copy of the
Record of the field notes and map of the County
line between the Counties of Lamar and Red
River in said State, as the same appears of
record in my Office in Minutes Book No 4
on pages from 76 to 83 inclusive

Given under my hand and the
seal of said Court at Office in
the City of Paris this 27th day of
August AD 1885.



Chas. B. Peques Clerk
County Court Lamar Co Tex
Ex-off. Clerk Commis' Ct. Lamar Co

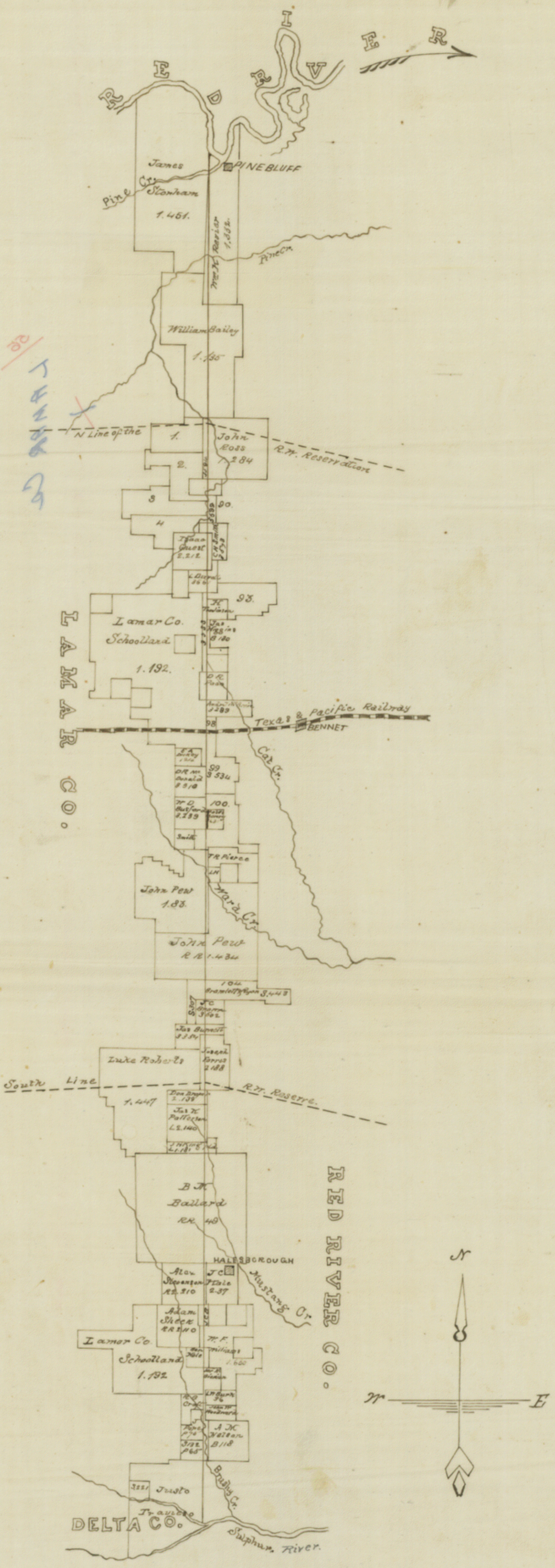
Map of

LAMAR & RED RIVER

LINE

By J. P. Paddy

Scale 4000 varas to the inch.



20
L
A
M
A
R
C
O.

L
A
M
A
R
C
O.

R
E
D
R
I
V
E
R
C
O.

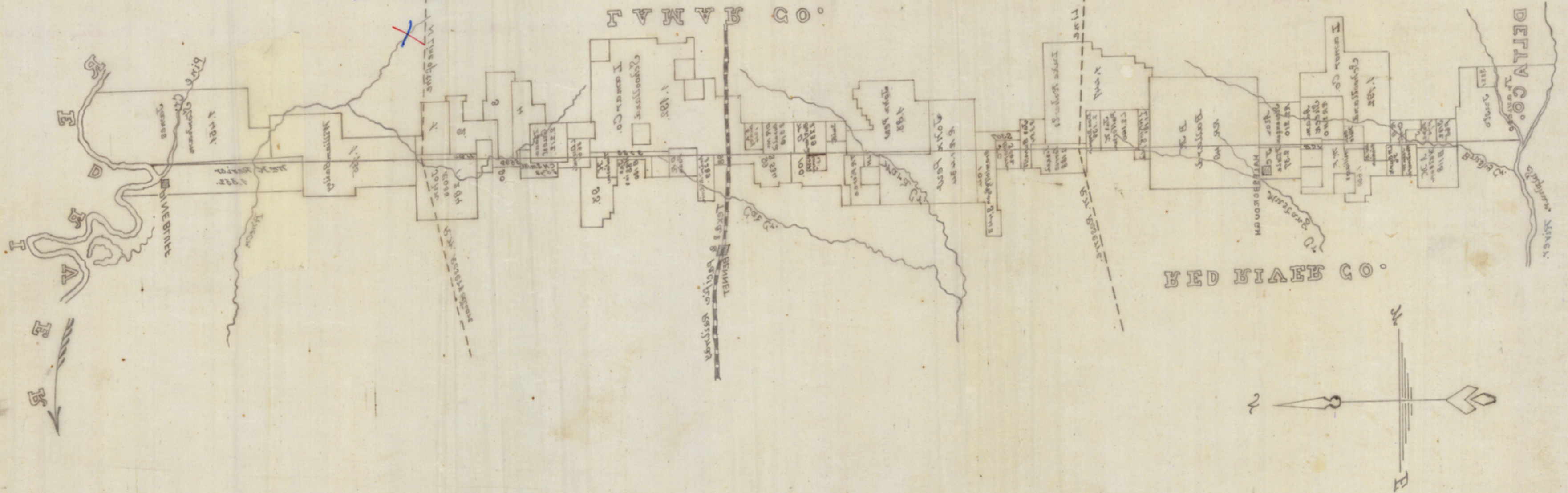
DELTA CO.

HOWARD & BIRD RIVERS

PLINE

W. H. Bird

Scale 4000 feet to the inch



56 / LAMAR Co

LAMAR CO.

BED BLUE CO.

DELTA CO.