

W. H. TILSON
CIVIL ENGINEER

OFFICE:
FIRST NATIONAL BANK BUILDING

10/27/10 Morrison.

Plainview, Texas, Oct. 17 1910.

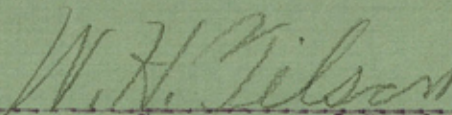
Mr. G. T. Gallaway,
County Clerk Lamb County,
Olton, Texas.

Dear sir:-

Please find inclosed duplicate of field notes of the survey of Land showing connection of land marks on the ground with the county line as established by me in May of this year. This is the additional data that the Land Commissioner at Austin requires that shall be made before he will revise the abstracts of surveys along the County line of Lamb County Texas.

I have certified to one of the duplicates. This I expect to file with you, the other you may have and on which you can certify of your having recorded in the books of Lamb County and send it to me and I will get it off to the Land Office in time for them to examine same and for me to get an answer if they approve or disapprove of same by the time of the regular Commissioner's Court of Lamb County.

Yours truly


Surveyor of Lamb Co., Texas.

FIELD NOTES SHOWING CONNECTIONS OF COUNTY LINE WITH ORIGINAL LAND MARKS OF LAND SURVEYS ALONG NORTH BOUNDARY LINE OF LAMB COUNTY Co, TEXAS.

GAM. Mile zero the rock at the N.E. Cor. of Lamb and N.W. Cor. of Hale county Texas, whence the S.E. Cor. of Section 3 Blk. S5 ~~XX~~ ~~XXXXXXXXXX~~ Sur. and the S.W. Cor. Sec. 40 Blk. S2 E.L. & R.R. Ry. Co. S Cert. No. 1091 Castro County Texas, Brs. S. 1056. vrs., and W. 179. vrs same having been placed by Flanagan in 1908 the Sur. of Castro County, Texas.

Mile 2 plus 265. vrs. is W. line of Section 2 Blk. S5 G. & M. Sur. and N.O 47'E. 895. vrs. is its N.W. Cor. placed by said Flanagan Surveyor of Castro County.

Mile 6 plus 433 vrs. is West line of Section 24 Blk. S3 E.L. & R.R. Ry. Castro County whence S.O 45'W 894 vrs. is the S.E. Cor. of same also placed by the said Flanagan. in 1908.

Mile 8 plus 520 vrs. is West line of Section 22 Blk. S3 E.L. & R.R. Ry. Co. and the S.E. Cor. of same Brs. S.O 45'W. 838.2 vrs. and at point 7 vrs. North ~~XXXXXXXXXX~~ of said S.W. Cor. is pipe placed by McCleary for the S.E. Cor. Sec. 1 Blk. T3 R.M. & T.A. Thomson Survey. At mile 8 plus 897. vrs. a point on county line whence the N.W. Cor. of Sec. 6 Blk. T2 R.M. Thomson Survey of Lamb Co. as set by W.H. Tilson County Surveyor brs. S. O 45'W. 552.1 vrs. is originally the N.W. Cor. of Section 6 Blk. T2 but is 267 vrs. N. of corner set by Twitchel for the same corner of said sec. 6 Blk. T2. Twitchel's corner here being 1627 Vrs. N.O 44'E. from his S.W. Cor. sec. 6 T2 By adjusting the S.E. Cor. of Section 1 Blk. T3 of R.M. & T.A. Thomson Surveys 432. vrs. East of the N.W. Cor. Sec. 6 blk. T2 set by W.H. Tilson as above referred to it will be impossible to fit callings on the Catfish Creek as called for in original field notes of Blk. T3. For further particulars of Blk. T3 investigate map I have filed with these field notes. No original corners of either block T2 or T3 could be found by me on the ground.

Mile 12 whence the N.W. Cor. of Capitol League No. 577 brs. N. 1482. vrs. and E. 69. vrs. The S.W. Cor. of League No. 610 brs. East 45. vrs. and 8615 vrs. South--both these corners appear to be original corners.

Mile 14 The S.W. Cor. of Capitol League 609 brs 1203. vrs. W. and 8553. vrs. S. The N.W. Cor. of League No. 578 Brs. 1200 vrs West and 1566. vrs. North.

Mile 20 Whence the N.E. Cor. of Capitol League No. 581 Brs. N. 1731. vrs. and East 141 vrs. an original Corner.

Mile 22 Whence the N.E. Cor. of Capitol League No. 582 brs. N. 1804 vrs. and West 1127 Vrs.

Castro's S.W. Corner Whence the N.W. Cor. of Capitol League No. 582 Brs. N. 1877 Vrs. and West 701. vrs.

Mile 27 Parmer's South boundary line-- Whence the N. E. Cor. of Capitol League No. 584 Brs. N. 1971 vrs. and West 732 vrs Also the S.E. Cor. League No. 603 Brs. S. 8186 vrs. and W. 868.6. Vrs both corners being original.

Mile 30 Lamb's county N. boundy line and N.W. Cor. of same---Whence the N.W. Cor. of Capitol League No. 584 Brs. N. 2054. Vrs. and West 1153 vrs. an original corner in a field.

Vernon Curl X
Tom Terrell X Chainmen
John Whitsel X
L.L. French X

W.H. Tilson
Surveyor of Lamb County, Tex. do hereby certify that the foregoing Survey was made by me on the ground according to law on _____ date and with the Chain Carriers aforesaid, duly qualified, and that the Lines, Corners, Boundaries and Marks of the same whether natural or artificial are truly and correctly described and set forth in the foregoing Plat and Field Notes.

W.H. Tilson
Surveyor of Lamb County, Texas.

FIELD NOTES SHOWING CONNECTIONS OF COUNTY LINE WITH ~~XXX~~
 LAND MARKS OF LAND SURVEYS ALONG ~~WEST~~ BOUNDARY LINE OF LAMB COUN
 TY, TEXAS.

N.W.Cor. Lamb County- Whence the N.W.Cor. of League
 No. 584 Brs. N.2054 vrs. and West 1153.2 vrs.

(No corners at S.E.or S.W. of League 584)

Mile 4 plus 609.5 vrs.- Whence the S.E.Cor. of League
 603 brs. 3806 vrs. East true course.

Mile 7 plus 1006. vrs.- Whence same being N.line of
 Castro County School League No. 220 and its N.E.Cor. brs. S. 89°
 29'E.3854.vrs.

X Mile 9 plus 534.4 vrs.--Whence N.E.Cor. of League No. 2
 206 is S.89° 29'E.1826.5 vrs. as placed by W.D.Twitchel.

Mile 11 plus 1737.8 vrs.-North line of League No. 207
 and its N.E.Cor. is 1782 vrs.S.89° 29'E. and its N.W.Corner is
 3265 vrs. N.89° 29'W.also placed by W.D.Twitchel State surveyor. X

Mile 14 plus 1035.4 vrs. is N.line of League No. 208
 and its N.E.Cor.is S.89° 29'E. 1736.2 vrs., same being also placed
 by W.D.Twitchel, or rather taken by him to be an original corner
 for this League, and at 3310.2vs.N.89° 29'W. from this point on ~~cx~~
 county line is ~~XXXXXXXXXXXXXXXXXXXX~~ N.W.Cor. of this League 209. 208 should be

Mile 17 plus 333.vrs.is N.line of League No.209-Whence
 old mound the original N.W.Cor.of same brs. N.89° 29'W.3560.2 vrs
 and an original claimed by Twitchel brs. S.89° 29'E.1486.8 vrs.

Mile 19 plus 1567 vrs. is N.line of League No. 210 and
 its N.E.Cor. is S.89° 29'E. 1474 vrs. ~~XXXXXXXXXXXXXXXXXXXX~~

Mile 22 plus 839 vrs.-is North line of League No. 211--
 Whence an original corner brs. S.89° 29'E. 1460.8 vrs. and its
 original N.W.Cor. brs. N.89° 29'W.3582.2 vrs.both being old mounds.

Mile 25 plus 136.5 vrs. is S.line of League No. 211 and
 its S.E.Cor.is S.89° 29'E.1453.vrs.

Mile 27 plus 1332.vrs. is North line of Crosby county
 school League No. III and its N.E.Cor. is 1445 vrs.S.89° 29'E.

Mile 30 plus 629 vrs. is South line of Crosby county
 school league No.III and its S.E.Cor. is 1437 vrs. S.89° 30' E.
 and the pile of White rocks the N.E.Cor. of Capitol League No.
 681 Brs. S.89° 29'E.12365 vrs.No other of the Capitol League cor-
 ners between here and the above mentioned pile of white rocks at
 N.E. of 681.

Vernon Curl X
 John Whitsel X
 L.L.French X Chainmen
 R.M.Miller X

W.H. Nelson Surveyor
 of Lamb County Texas do hereby certify that the fore-
 going Survey was made by me on the ground according to law on the
 date and with the Chain Carriers aforesaid, duly qualified, and that
 the Lines, Corners, Boundaries and Marks of the same whether natural
 or artificial are truly and correctly described and set forth in the fore-
 going Plat and Field Notes.

W.H. Nelson
 Surveyor of Lamb County, Texas.

FIELD NOTES SHOWING CONNECTIONS OF COUNTY LINE WITH ORIGINAL LAND MARKS OF LAND SURVEYS ALONG SOUTH BOUNDARY LINE OF LAMB COUNTY, TEXAS.

- (5) The original S.E. Cor. of Sec. II 2, Blk. A, R.M. Thomson surveys of Lamb County, consisting of small pebbles Brs. 467. vrs. E. of mile 5 Lamb County's S. Bdy. line, and S.O 26' W. 2407. vrs. and the N.E. Cor. Sec. I 23 same Blk. Brs. E. 467 vrs. and N.O 26' E. 1399. vrs. and consisting of 2 pits. No other corner to the E. or W. of this line could be found on this block.
- (7) At mile 7 plus 1440 vrs. West is Spade fence whence the S.E. Cor. ~~XXXXXXXXXXXXXXXXXXXX~~ Capitol League No. 692 Brs. S.O 20' W. 4189. vrs., and the N.E. Cor. of same is N.O 20' E. 811. vrs. same being a 2" pipe along line of E. & W. wire fence and 5000. vrs. N. of South line of this League as surveyed by me to fit callings of original field notes, as indicated further on.
- (10) Mile 10 plus 798. vrs. the S.W. Cor. of League No. 692 Brs South 4146. vrs as placed by me to fit callings of original field notes of line to West of this League Corner.. No original corner.
- (19) Mile 19 plus 133 vrs. the S.W. Cor. of League No. 693 Brs S. 4103 vrs and from said S.W. Cor., and from said S.W. Cor. of this League the South line of this League crosses Creek at 3400. vrs. S. 89 30' E. as called for in field notes of this league. No corner.
- (15) Mile 15 plus 1375. vrs. the S.W. Cor. of League No. 694 Brs. South 4062. vrs. Said S.W. Cor. being 1440 vrs. West of W. water edge of center of lake as called for in original field notes of survey of this League.
- (18) Mile 18 plus 732. vrs. West, the S.W. Cor. of League No. 695 Brs. South 4018 vrs same having been placed by me and located 560. vrs. W. and 60. vrs. South of old trail made by wagons. This is the calling in original field notes of this league but no corner ~~XXXX~~ could be found as it is within 30 vrs. of watering tanks and well.
- (20) Mile 20 plus 1870. vrs. West, whence the N.E. Cor. of Capitol League No. 682 brs. N. 6158 vrs. true course as determined from League corner West and callings on league to West.
- (21) Mile 21 plus 55 vrs. the S.W. Cor. of League No. 696 Brs South 3973. vrs. This point is, as located by me, 1450 vrs. East of break in gap of Plains with white stony point opposite, and from this League Cor. the Yellow House springs and W. Mill brs. N. 48 1/2 W. from variation of these League lines—all as called for in ~~XXX~~ original field notes. This point is near W. mill, and original corner could not be found.
- (23) Mile 23 plus 1238 vrs. the pile of rocks the N.E. Cor. of Capitol League No. 681 Brs. N. 6200. vrs. This without a doubt, in my opinion, is the original corner located for this League as the lake called for in field notes of same fits this place.
- (28) Mile 28 plus 1833. vrs. the S.E. Cor. of League No. 700 Brs. S. 3808. vrs. This consists of 4 pits placed by me on hole and is 1840 vrs. South of old wagon trail—course S. 75 W. 200 vrs. either way—but no original corner here owing to nature of soil.

Vernon Curl, Tom Terrell, L.L. French, R.M. Miller -- Chainmen

W. H. Gilson Surveyor
of Lamb County, Texas do hereby certify that the foregoing Survey was made by me on the ground according to law on the date and with the Chain Carriers aforesaid, duly qualified, and that all the Lines, Corners, Boundaries and Marks of the same whether natural or artificial are truly and correctly described and set forth in the foregoing Plat and Field Notes.

W. H. Gilson
Surveyor of Lamb County, Texas.

E 503—Certificate of True Copy of Papers Recorded—Class 1.

TEXAS STANDARD FORM

THE STATE OF TEXAS,
COUNTY OF Lamb } I, G. T. Gallaway Clerk
of the County Court of Lamb County, Texas, do hereby certify that
the foregoing is a true and correct copy of the original Field notes and Plat

as the same appears of record in my office in Book one Page 62764
of the Commissioner's Court minutes.

GIVEN UNDER MY HAND, and the seal of said Court, at office in
this 18th day of Nov 1904

counter 56048

G. T. Gallaway Clerk.
By _____ Deputy.

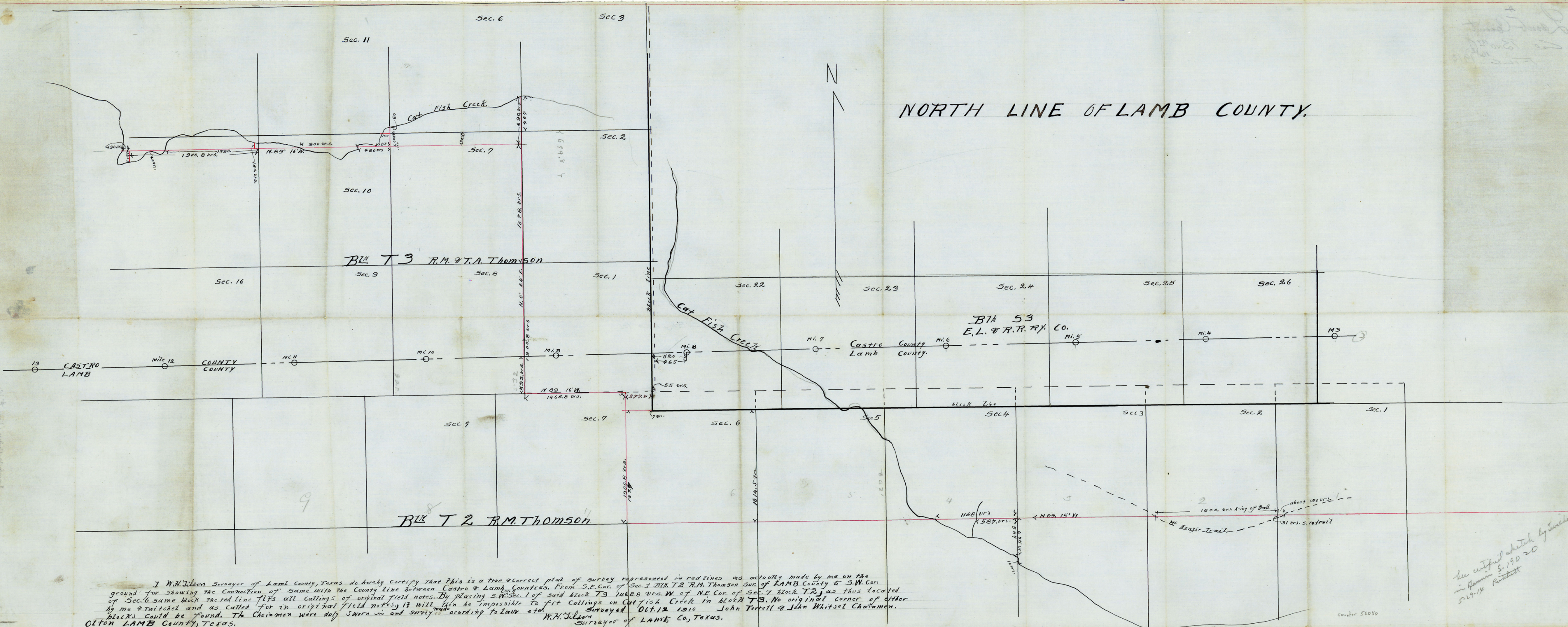
10/ Lamb County -
1908

I³

counter 56099

Handwritten notes in top right corner, partially illegible.

NORTH LINE OF LAMB COUNTY.



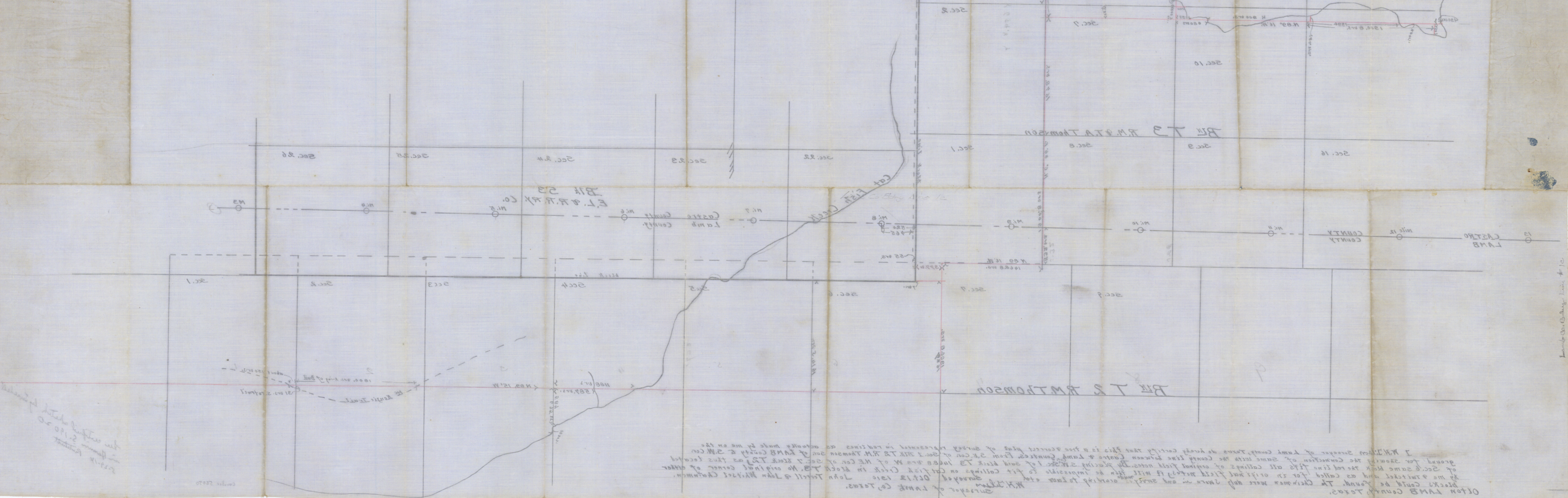
I W.H. Wilson Surveyor of Lamb County, Texas do hereby certify that this is a true & correct plat of survey represented in red lines as actually made by me on the ground for showing the connection of same with the County line between Castro & Lamb Counties. From S.E. Cor. of Sec. 1 Block T2 R.M. Thomson Sur. of LAMB County to S.W. Cor. of Sec. 6 same block the red line fits all callings of original field notes. By placing S.W. Sec. 1 of said block T3 146.8 vrs. W. of N.E. Cor. of Sec. 7 block T2, as thus located by me & Twitchel and as called for in original field notes, it will then be impossible to fit callings on Cat Fish Creek in block T3. No original corner of either blocks could be found. The Chainmen were duly sworn in and survey made according to Law etc. Surveyed Oct. 12 1910 John Terrell & John Whitset Chainmen.

W.H. Wilson
Surveyor of Lamb Co., Texas.

See certified sketch by Twitchel in Hammer S. 190 20 5-27-14 Pritchett

* 1c
Lamb County
Co Bnd
FILE 1910

NORTH LINE OF LAMB COUNTY



The original plat was
made in 1902
and the
survey was
made in
1910

Olton Lamb County, Texas.
black's could be found. The
Christman were and survey
made in one survey
surveyed Oct 1910
John Threll & John H. H. H.
Christman.
No original corner of other
plat of sec 7 block T. 3 S.
in block T. 3 S. as this located
from S.E. cor. of sec 1
of Lamb County & S.W. cor.
of Lamb County as this located
as actually made by me on the
of survey presented in red lines
of survey presented in red lines
of survey presented in red lines
of survey presented in red lines