

5) County bdy between
6) Lampiasas
and
Mills

Filed Sept 21st 1891
J. M. Braumont
Chief Clerk

Examined, approved and
applied, and the abstract
corrected

Sept 29th 1891

J. M. Braumont

The State of Texas
County of Lampasas

Hon D. C. Thomas County Judge
of Lampasas County State of Texas,

The undersigned respectfully represents
unto your Honor, that in obedience to the
order of your Honorable Court that he
repaired on the 25th day of Aug 1891 to the
point designated by the Honorable Com-
missioner of the General Land Office and
by you incorporated in your order to me
as the beginning point from which to run
and establish the Boundary line between Lam-
pasas and Mills Counties, that he was
met at said point by M. D. Hooks Esq
representative on the part of Mills County, and
a good surveyor, that the undersigned and
Mr Hooks found the point designated to be five
Hundred and fifty, or 530 E, of the old South
Boundary of Hamilton County passing at 730
or the N. W. Corner of the David George Survey
30 or due East at 885 or crossed Bennett's
Creek at 950 or the rock set in the ground
and the bearing trees designated by the Com-
missioner of the General Land Office as
the proper point of beginning,
First mile.

Beginning at above designated point
Thence S. 56th W. at 12 or pass out of the D. George
Survey into the N. R. Adams Survey, whence its
S. E. Corner and the N. E. Corner of Sec N^o 4, bears
S. 19th E, 31 or (H. I. & D. R. R. Co) at 1900 or a rock
mound two feet high end of first mile,

Sec mile.

Thence S. 56th W. to the E. Boundary of

Lampasas Co. Bdry. line 46

Sec N^o 3, H, T, & B, R, R, Co whence its N.E. Corner
N, 19 W, 600 vs, at 1900 vs end of second mile
a rock mound,

Third Mile.

Thence S, 56 W, at 799 vs crossed
the E. line of the N, R, Prister Survey whence
its S.E. Corner bears S, 19 E, 690 vs, at 1900 vs
end of third mile a rock mound a L.O. bears
N, 15 W, 5 vs,

Fourth mile.

Thence S, 56 W, at 180 vs. crossed Comanche
and Lampasas Road, thence to the N. Boundary
of Sec N^o 16, of the B, M, Co, whence the S.W. Corner
of the N. Prister Survey bears S, 71 W, 668 vs at
1900 vs fourth mile stone a rock mound
at the N. foot of Bennett and Sims mountains

Fifth Mile.

Thence S, 56 W, to the E. Boundary of Sec
N^o 17, B, M, Co, whence its N.E. Cor. bears N, 19 W,
350 vs, at 1900 vs the fifth mile stone,

Sixth Mile.

Thence S, 56 W, to the E. Boundary of the
B. Payne Survey whence its S.E. Corner bears
S, 19 E, 239 vs, at 870 vs crossed N. Boundary
of said Payne Survey whence its S.W. Corner
bears S, 19 E, 55 vs, at 1900 vs the sixth mile
stone a rock mound,

Seventh Mile.

Thence S, 56 W, at 944 vs crossed
the E. Boundary of the D, P, Coit one third league
whence its S.E. Corner bears S, 19 E, 760 vs,
at 1700 vs the Center of North Sims Creek at 1900
vs a Stone mound The end of seventh mile,

Eighth Mile.

Thence S, 56 W, at 1345 vs crossed

The N. Boundary of the Coit one third league
whence its S. W. Corner bears S, 19 E, 165 vs, at
1900 vs a stone mound, end of the eighth mile
Ninth Mile.

Thence S, 56 W, to the N. Boundary of
the V. A. Reynolds Survey whence its N. W. Cor
ner bears N, 70 vs at 1561 vs crossed the E.
Boundary of Sec N^o 5, East Texas Railway Co
Survey whence its N. E. Corner bears N, 33 vs
witnessed by two Live Oaks one bearing S, 31 E,
60 vs, another S, 84 E, 84 vs and the S. E. Corner
of the W. H. Stanley bears N, 233, vs and N,
278 vs at 1900 vs the Ninth mile stone a
big rock

Tenth mile

Thence S, 56 W, at 840 vs the Seiterfitt
and Centre City Road at 1900 vs a stone mound
on top of the mountain of N. Sims Creek end
of Tenth mile,

Eleventh Mile.

Thence S, 56 W, to the E. Boundary of Sec
N^o 6, E. T. R. R. Co, whence its S. E. Corner bears
S 635, vs, Thence S, 56 W, to the N. Boundary of
Sec N^o 3, whence its N. E. Corner bears E, 930
vs, at 1900 vs a stone mound end of
eleventh mile,

Twelfth mile.

Thence S, 56 W, to the E. Boundary of Sec
N^o 10 E. T. R. R. Co, whence its N. E. Corner
bears N, 650 vs at 1900 vs the twelfth mile
stone at the head of long Cove,

Thirteenth mile,

Thence S, 56 W, to the N. Boundary of
Sec N^o 1, E. T. R. R. Co whence its N. W. Corner
bears N, 170 vs Thence S, 56 W, to E Boundary

Lampasas Co. Surv. line #6

of Sec N^o 12, whence its N.E. Corner bears N. 130^o W. at 1900^o W. the thirteenth mile stone a rock mound,

Fourteenth Mile.

Thence S. 56^o W. at 1200^o W. crossed the mountain between Sims Creek and the Colorado River at 1780^o W. crossed G. C. & S. Fe R.R. at 1900^o W. the Fourteenth mile stone in the N. Boundary of the John Norman Survey, whence its N.E. Corner bears E. 738^o W.

Fifteenth Mile.

Thence S. 56^o W. at 1900^o W. a stone mound end of fifteenth mile.

Sixteenth Mile.

Thence S. 56^o W. at 1900^o W. the sixteenth mile stone a rock mound witnessed by a L. O. marked "N" bears N. 50^o E. 30^o W.

Seventeenth Mile.

Thence S. 56^o W. at 225^o W. crossed the N. Boundary of the John Norman Survey whence its S.W. Corner bears S. 57^o 5^o W. Thence S. 56^o W. to the N. Boundary of the Edward Winston Survey N^o 51, whence its N.E. Corner bears E. 1670^o W. at 1900^o W. the seventeenth mile stone a stone mound.

Eighteenth Mile.

Thence S. 56^o W. at 1900^o W. the eighteenth mile stone, a rock mound.

Nineteenth Mile.

Thence S. 56^o W. to the N. Boundary of the Calvin Barker Survey N^o 50 whence its N.E. Corner bears E. 1550^o W. at 1900^o W. the nineteenth mile stone a rock mound near a pool of water.

Twentieth Mile.

Thence S. 56° W. to the N. Boundary of the Francis Wilson Survey No 49 whence its N.W. Corner bears N. 1660 ars at 1900 ars the twentieth mile stone a rock mound, Twenty First Mile.

Thence S. 56° W. at 1605 ars the waters edge on the Colorado River from this point N. 56° E. 60 ars built a rock mound above high water mark at the foot of a L.O. 18 inches in diameter marked M and four hacks, whence another L.O. marked L and four hacks bears S. 26° W. 32 ars.

Mounds of stone two feet high like marked four hacks, "≡"

Explanation.

The above survey was made by us on the ground beginning on the morning of the 26th day of August and ending on the 29th day of August A.D. 1891.

We agreed as the proper course to be run, we used two good instruments and flagged each other carefully. The greatest difficulty we encountered was to find the corners of the various land surveys through which we had to pass, we had to hunt and measure most of those surveys on the ground and find that the latest map now in use for Larapouse County is very inaccurate. To illustrate, the distance represented on the map from starting point to the E. Boundary of the N.R. Exister Survey is 3800 ars which actual measurement on the ground is 4599 ars.

One more the B. Payne survey is on the ground 789 ars instead of 672 ars as repre-

Lampasas Co. Bdry. line # 6

sented on the maps, We pass out of it N. 19 W. 55 ms from its S. W. corner by actual measurement yet this corner stands on the maps as S. 19 E. 190 ms, We give these surveys by way of illustrating the inaccuracies of the maps, we could enumerate many other but these are enough; The distances and land corners from our line mentioned by us have been found and proved by us mostly on the ground.

We ran the course S. 56 W. from the beginning, with a variation of 9:30' E.

Martin White Sr.

J. P. Grundy
Martin White Jr. Chaimmen.

The State of Texas
Counties of Lampasas & Mills We do certify that the above survey was made by us according to law and that the courses distances marks natural and artificial are correctly given and that the map or sketch hereto attached is a correct representation of the work done by us on the ground,

Martin White Sr
For Lampasas Co,
D. M. Hooks Surveyor
For Mills County,

Filed Sept 7-1891
Recorded Sept 18th 1891
H. N. Key
Clerk

The State of Texas
County of Lampasas
D. H. N. Key County Clerk

in and for Lampasas County Texas
do hereby certify that the above
and foregoing is a true and
correct copy of an instrument
of writing as the same appears
of record in my office in the
Minutes of the Commissioners
Court of Lampasas County Texas
in Vol N^o 3 on pages 361 + c
Witness my hand and
Seal of office this Sept 18th
1891.

H. N. Key
County Clerk
Lampasas Co Tex

Lampasas Co Bdry Line 6

Boundary line ⁵
between the
Counties of
Lampasas
&
Moell

Filed Sept 21st /91

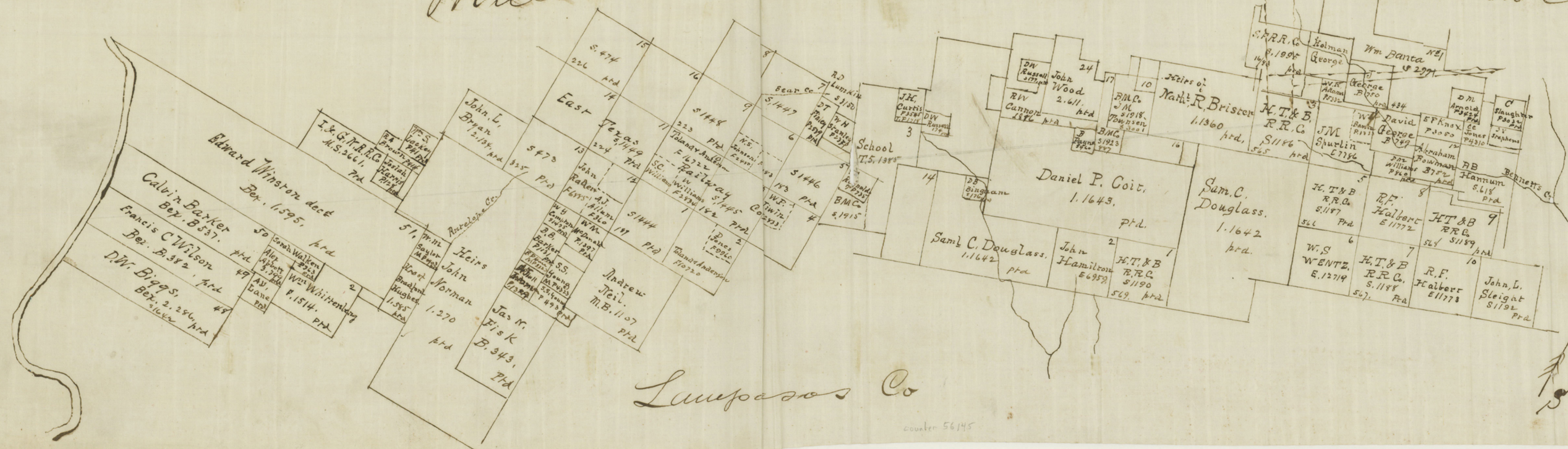
Examined, affirmed
and applied and
abstract corrected
Sept 29th /91
G. W. Beaumont

Mills Co.

Hamilton Co

LAMPASAS

N.



Lampasas Co

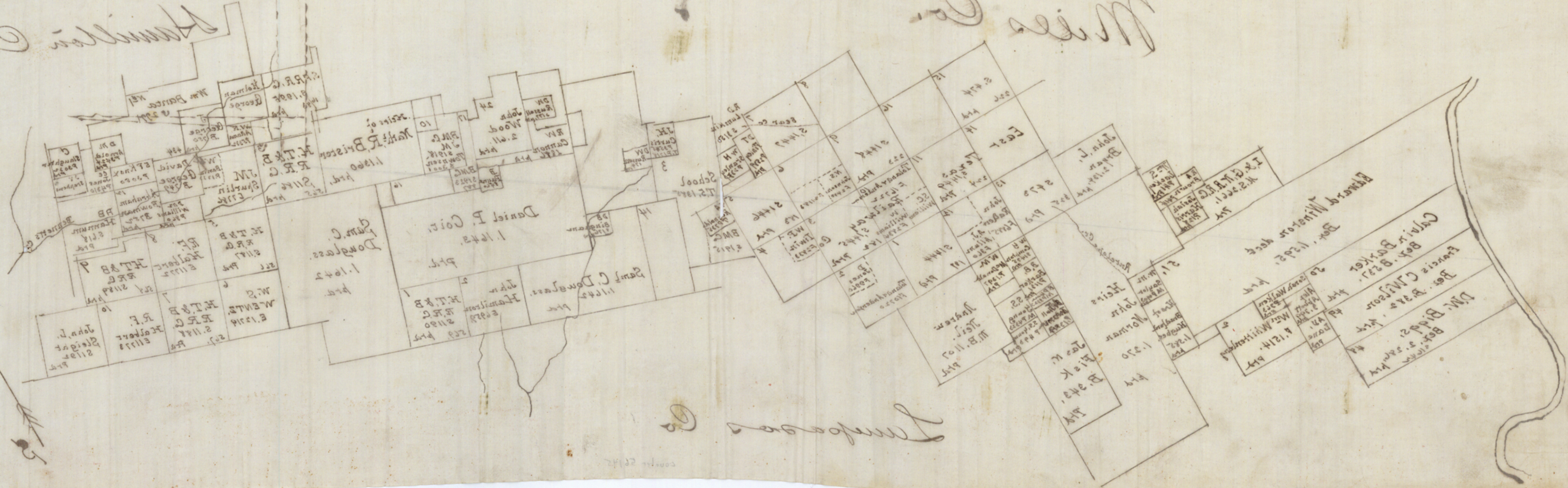
counter 56145

LAMPASAS CO

Mountain Co

Miss Co

N. 1



Lampasas Co