

TO THE HONORABLE JOHN NICHOLS:

County Judge of Lampasas County, Texas.

In obedience to an order of your Honor, dated July 11th 1899, instructing me "to repair to the S.E. corner of Hamilton County on the North line of Coryell County and to proceed from there on Tuesday the 17th day of October 1899, to run S. 60 W. from said S.E. corner of Hamilton County, passing the N.W. corner of Coryell County, which is the N.E. corner of Lampasas County to point of intersection with the East line of Mills County for the S.W. corner of Hamilton County and upper N.W. corner of Lampasas County" and requiring me to measure, mark and establish the line between this and Hamilton County, in accordance with Chapter IV. Title XXIII. of the Revised Statutes of Texas; I have to report: that on the date designated in said order I was at the S.E. corner of Hamilton County, on the North line of Coryell County and was there met by Capt. W. T. Saxon, County Surveyor of Hamilton County who had been appointed by the County Court of said County to co-operate with me in establishing the line between this and Hamilton County.

We found the stone mound and the witness trees marked as described in the report of Capt. Saxon of his survey made in June, 1879.

It having been just one month since I had run the South line of Hamilton County to a point 26 miles plus 1480 varas S. 60 W. from the S.E. corner of same and having with me full and complete notes of the line run just one month previously, Capt. Saxon agreed that the line so run by me was correct and that it was unnecessary to retrace same.

In accordance with the above agreement we proceeded to the point on the South line of Hamilton County where on the 26th day of September last I had established the N.E. corner of Lampasas County which is the N.W. corner of Coryell County. From this point we proceeded on the evening of the 19th inst to run, measure, mark and establish the line between this and Hamilton County

and to locate the S.W. corner of Hamilton County, which is a N.W. corner of Lampasas County.

It affords me pleasure to state that Capt. Saxon and myself had no disagreement whatever, and I am under many obligations to him for information as to the location of land lines, corners, etc. The field notes and sketch hereto attached are a part of this report.

Very respectfully submitted,

*V. M. Giles*

County Surveyor, Lampasas County, Texas.

I, W. T. Saxon, County Surveyor of Hamilton County, Texas, do hereby concur in and agree with the above report, and the attached field notes.

I am satisfied that the line described in said field notes is a retrace of the original line between Hamilton and Lampasas Counties.

*W. T. Saxon*

County Surveyor, Hamilton County.

FIELD NOTES OF THE LAMPASAS AND HAMILTON COUNTY LINE AS RUN BY V.N. ZIVLEY  
AND W.T. SAXON AND COMPLETED OCTOBER 23rd. 1899.

Beginning at the N.E. corner of Lampasas County, which is the N.W. corner of  
Coryell County on the South line of Hamilton County as established by V.N.  
Zivley and R.T. Wilson on the 26th day of September 1899.

Said corner <sup>is</sup> on the lower or most southern E.C. Glover survey an Elm mark-  
ed L. bears S. 23 E. 72 varas, the south line of a sub-division of this survey  
bears S. 30 E. 89 varas, the original west line of said Glover survey bears  
S. 60 W. 71 1/4 varas the original N.W. corner of the survey bears N. 170  
varas the N.E. Corner of Coryell County on south bank of Neills creek  
bears N. 60 E. 32 miles and the S.E. corner of Hamilton County brs. N. 60 E.  
26 miles plus 1480 varas.

Thence S. 60 W. 71 1/4 varas the East line of the Thos. Osborne survey the  
S.E. corner of same bears S. 19 W. 176 varas- at 304 varas the North line of  
the Joseph Rohr survey, the N.E. corner bears south 71 East 150 varas, at  
1540 varas the north line of C.F. Howard survey Joseph Rohr's S.W. corner  
bears N. 71 W. 80 varas at 1900 8/10 varas first mile: Stone monument on  
east slope of mountain, Cap stone marked L.H. 1 M. At 1 mile plus 620 varas  
East line of E. Beach S.E. corner bears S. 19 E. 65 varas at <sup>one</sup> 0 miles 909 varas  
the south line of Beach, S.E. corner brs N. 71 E. 300 varas 1 mile 1550 varas  
East line of F. Richardson S.E. corner brs S. 19 E. 123 varas at 1 mile 1900  
8/10 varas second mile: A set stone on Richardson survey marked L.H. 2 Ms.  
at 2 ms. plus 387 varas South line of Richardson survey S.W. corner brs S. 71  
W. 228 varas at 2 miles plus 442 varas east line of R.W. Raiford the N.E. cor.  
of same on Richardson south line brs N. 19 W. 13 vrs. at 2 miles plus 1841 vrs  
centre of Dunn branch at 2 miles 1850 vrs. Dunns east line his N.E. corner  
brs N. 19 W. 375 varas at 3 miles a set stone on Dunn survey marked L.H. 3 ms.  
At 3 miles 774 varas centre of Bailey branch at 3 miles plus 920 varas  
Dunns west line his S.W. corner brs S. 19 E. 388 varas at 3 miles plus 1212  
varas east line of Robert Pilley his N.E. corner brs N. 19 W. 57 varas.

4th Mile a set stone on the Pilley survey marked L.H. 4 Ms. at 4 miles plus 716 varas the west line of the Pilley survey the N.W. corner brs N. 19 W. 324 varas and the N.E. corner of the Hoggett survey brs N. 19 W. 432 varas at 4 miles plus 1170 varas a branch, course south, large Water Elm 2 feet to left marked 4 hacks, at 4 miles plus 1245 varas Live Oak on line, at 4 miles plus 1782 varas centre of Lampasas river at 5 miles set stone on L. Hoggett survey marked L.H. 5 ms. At 5 miles 720 varas east line of the J.A. Sylvester survey the S.E. corner brs S. 19 E. 425 vrs. and the S.W. corner of the Hoggett survey brs S. 19 E. 693 vrs. at 5 miles plus 1900<sup>3</sup>/<sub>10</sub> varas set stone on Sylvester survey in Wiswells field marked L.H. 6ms. at 6 miles plus 664 vrs Lampasas and Star mountain road at 6 miles plus 774 vrs. south line of J.A. Sylvester the S.W. corner brs S. 71 W. 410 varas at 6 miles plus 1796 varas a branch. 7 miles a set stone on Wm. Banta survey marked L.H. 7 ms. at 7 miles plus 763 varas pass 9 feet to right of 5 Live Oaks marked 5 hacks on N. side at 7 miles plus 853 vrs east line of the J. George survey the N.E. corner brs N. 19 W. 288 varas the S.W. corner of Wm. Banta brs S. 19 E. 1062 varas at 7 miles plus 1371 varas the S.W. corner of Hamilton County as claimed by D.M. Hooks brs S. 30 E. 274 varas at 7 miles plus 1775 vrs. a deep branch at 7 miles plus 1880 varas centre of Bennetts creek At 8 miles set stone on west bank of Bennetts creek marked L.H. 8 ms. at 8 miles plus 327 varas the east line of the H. George survey the S.E. corner of same brs S. 19 E. 182 varas and the S.W. corner of J. George brs S. 19 E. 782 vrs. at 8 miles plus 1332 varas the south line of H. George survey the S.E. corner brs N. 71 E. 1008 varas at 8 miles plus 1510 varas a branch, 8 miles plus 1534 varas same branch, at 8 miles plus 1594 varas same branch. 9 miles set stone on vacant land marked L.H. 9 ms. at 9 miles plus 300 varas cross east line of S.P.R.R. Sec. No. 1 the S.E. corner of same brs S. 19 E. 465 varas at 9 miles plus 372 varas the S.W. corner of Hamilton County a large set stone marked S.W.H. & N.W.L. - S. & Z.A.D. 1899. a Willow brs S. 37 E. 51 vrs. an Elm brs S. 8 1/2 W. 301 vrs. the S.W. corner of H. George brs N. 55 1/2 E. 491 varas.

John H. Zivley }  
 John Weaver } chainmen

*V.M. Zivley*  
 County Surveyor  
 Lampasas County.

Line marked 4 hacks. Oct. 23<sup>rd</sup> 1899.  
 Variation 8. 58' E.

Lampasas & Hamilton  
Co. Line.

V. M. Zioley's Report.

Filed in General Land  
Office April 19<sup>th</sup> 1901  
L. C. Ulise

Lampasas Co Bdry Line

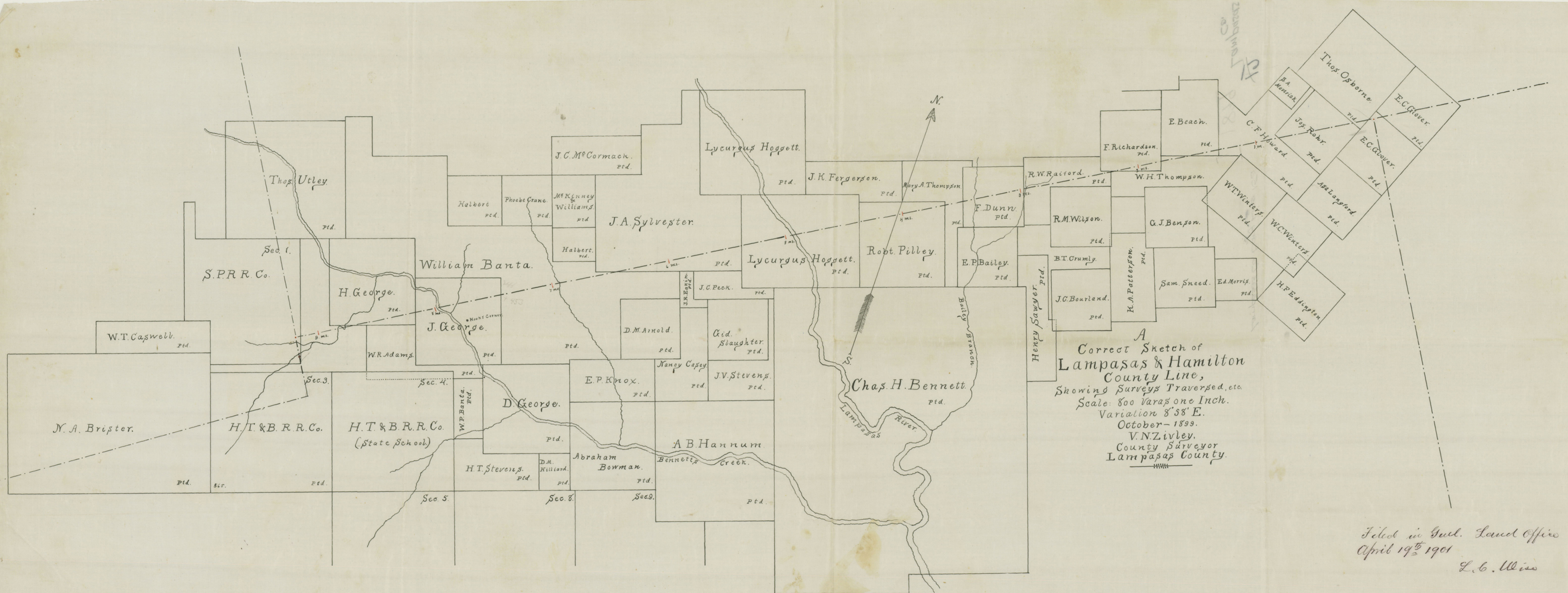
Filed for Record, 'Mch. 9'

1900. at 3.30 o'clock P.M.

J. E. Morgan  
C. O. L. O.

D. J. Morris

syll.

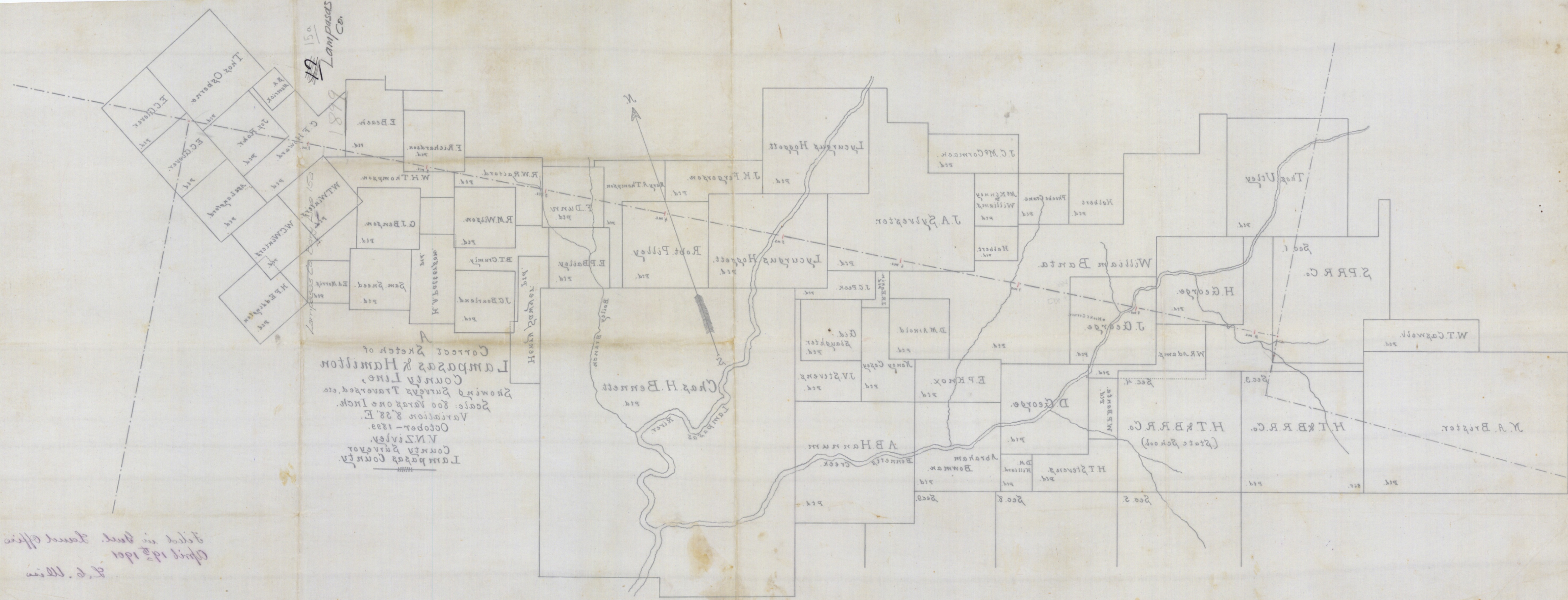


A  
 Correct Sketch of  
 Lampasas & Hamilton  
 County Line,  
 Showing Surveys Traversed, etc.  
 Scale: 800 Varas one Inch.  
 Variation 8° 58' E.  
 October - 1899.  
 V.N. Zivley,  
 County Surveyor  
 Lampasas County.

Filed in Genl. Land Office  
 April 19<sup>th</sup> 1901  
 L. G. Ulmer

Filed in Dist. Court Office  
April 1st 1891  
J. S. Wain

Lampasas County  
County Surveyor  
V. N. Wiley  
October - 1890  
Variation 8' 38" E.  
Scale: 800 Yards one Inch.  
Showing Survey's Traversed, etc.  
Lampasas & Hamilton  
County Line  
Correct Sketch of



15a  
Lampasas  
Co.

1891

1890