

J. E. MORGAN
COUNTY CLERK, LAMPASAS COUNTY
ROY DAVIS, DEPUTY

LAMPASAS, TEXAS

2234

Lampasas, Texas, March 14th 1914.

Mr J.T. Robison,
Austin, Texas.

Dear Sir:-

By order of the Commissioners Court of Lampasas, County, we herewith enclose a certified copy of the map of the County line between Lampasas and Coryell Counties, showing the parts of surveys located in Lampasas County.

Yours very truly,

J.E.Morgan County Clerk

By Roy Davis Deputy.

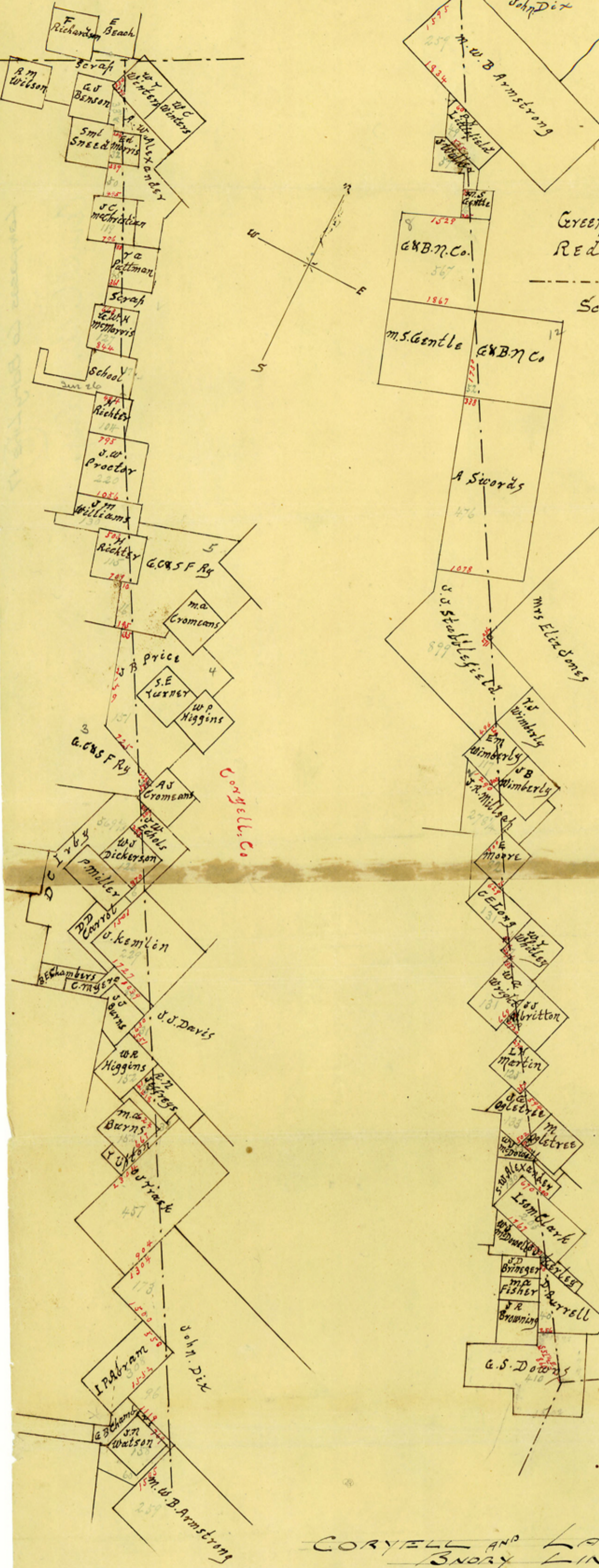
RECEIVED

MAR 16 1914

Referred to Map

1st Section (North Part)

2^d Section (South Part)



CORYELL AND LAMPASAS COUNTY LINE

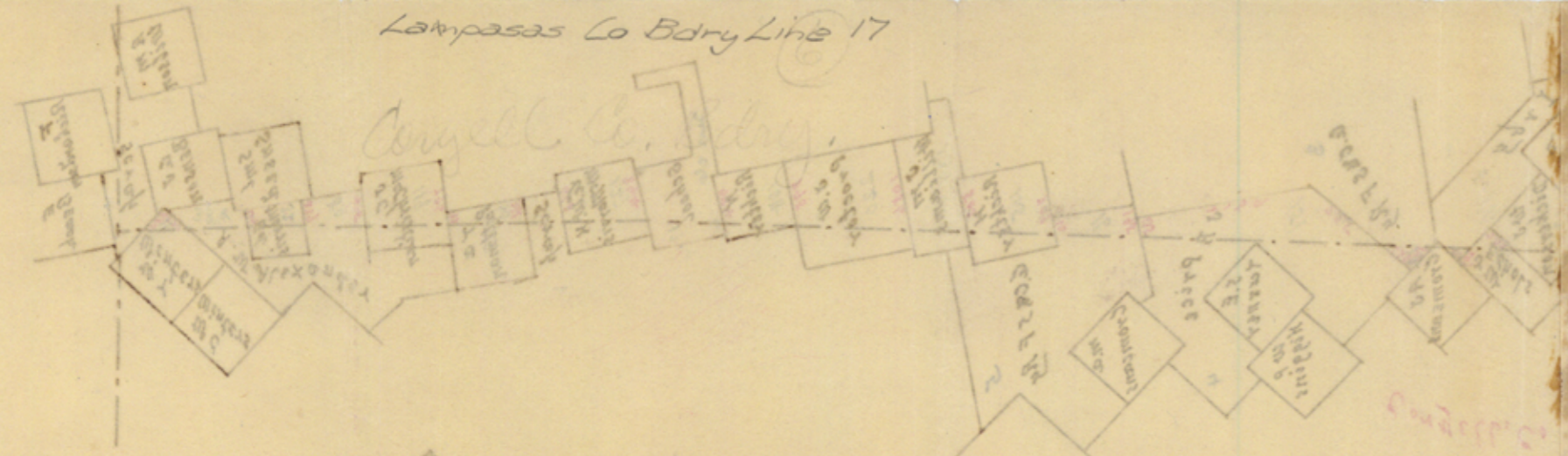
Surveyors Report on County Line-

To the Hon County Commissioners of Lampasas County;
 This is to certify that in compliance with your order passed at your Nov Term, 1905, I have carefully gone over the County line as established by G.W. Tunner Co. Surveyor of Bosque Co. under the order and decree of the Hon. Dist Court of said Co. all of which matters are now of record. His first mile post is found upon scrap, or unsurveyed School land, at a point S 15 W 50 vrs from the S E cor of the E. Buck pre of Hamilton Co: His last or final mile post is found on the G.S. Downs sur at a point 860 vrs S 51 1/2 E from the S.E. Cor. of the J.R. Browning Pre. The map on the following page shows how the different surveys are affected - all of which is respectfully submitted.

Witness my hand at office this Febr 17th 1906.
 W.H. Fountain Co. Sur.
 Lamps Co. Tex.

Lampasas Co Bdry Line 17

Coryell Co. Bdry



Section 28 (2008)

Section 28 (2008)



CO LINE
 BEG
 Grand features - 1800's
 references

CO LINE
 BEG
 Grand features - 1800's
 references

Witness my hand at office this 17th day of Feb. 1806.
 W. H. Fontaine Co. Sur.
 Lampas Co. Tex.

County 18260

The State of Texas, I, J.E. Morgan Clerk of the County Court and
County of Lampasas, Ex-Officio Clerk of the Commissioners Court of
said County, do hereby certify that the foregoing is a true and correct
copy of the Report of the County Surveyor of Lampasas County, Texas,
on the survey of the County Line between Lampasas and Coryell Counties
together with the plat of said showing how each survey through which
said line is affected thereby, now on record in my office in Volume 6
on pages 137 and 138 of the Minutes of the Commissioners Court.

Witness my hand and the seal of the Commissioners Court of said
County, at office in Lampasas, Texas, this 14th day of March A.D. 1914.

J.E. Morgan Clerk County Court and Ex-
Officio Clerk Commissioners Court,
Lampasas County, Texas.

By Roy Davis Deputy.

Handwritten notes in the right margin, including the number 6 and some illegible text.

