

File No. 59

~~2~~
Limestone *and*

Navarro Counties

Field Notes of line between

Limestone + Navarro

Map of line between

Limestone + Navarro

Abstract corrected April 1884
Beaumont

R. C. S. 30-4
W.S.

The State of Texas }
County of Limestone } Field notes
of the Boundary
Line between the counties of
Limestone and Navarro State
of Texas, as run by N. L.
Graves County Surveyor of Limestone
County and Henry K.
Parmer County Surveyor of
Navarro County Texas, in the
months of August and September
A.D. 1879.

Beginning at a Post in
a mound 4 feet high which
stands on the E.W. Bohannan
Survey N 30° W 241 varas, and
N 60° E 307 varas from the S.W.
corner of the same. This post
in a mound is the corner of
Navarro, Hill and Limestone
Counties, and was made by
intersecting the line between
Limestone and Hill and the
line between Hill and Navarro
Counties, as formerly run and
established. From this point
we made the following bearing:
To wit a Post oak 20 inches in

dia. bears $N 72^{\circ} W. 21\frac{1}{2}$ varas
in Hill County, and a Double
Post Oak 16 and 20 inches in
dia. bears $N 84\frac{1}{4} E. 116\frac{2}{5}$ varas
in Navarro County, both trees
marked $\frac{1}{4}$ C.C.

Thence $S 84^{\circ} E$ (variation $9^{\circ} 17'$
E) crossing the S. line of the
G. W. Bohannon Survey $S 60^{\circ} W$
312 varas from the S.E. corner
of the same, at 1320 varas cross
the north fork of Pin oak Creek.

(1. M.) at 1. mile a Post in a mound
whence a Double Post oak 16 and
18 inches in dia. bears $S 7^{\circ} E. 8$

(2 M.) varas, marked $\frac{1}{4}$ C.F. at 2. miles
a post in a mound in Graham's
field near a Tank. Crossed. N.
line of Joshua Graham league
 $N 30^{\circ} W 190$ varas from the rec-
ognized corner of the D.M. Mil-

(3 M.) lians Survey, at 3. miles a
Mound whence an Elm 12
in dia. bears $S 24\frac{1}{2} W. 5$ varas
from this point Elm Branch
bears $N, 4^{\circ} E. 143$ varas, at 3. miles
and 1705 varas the S.E. corner

- of the C. B. Roberts survey bears
 N 30° W 29 varas, and McLaugh-
 lins house about 200 varas in
 (4 MI) Limestone county, at 4. miles
 a mound, at 4. miles 1220 varas
 M. P. Paynes house about 100
 varas in Navarro C. county At 5
 (5 MI) miles a mound, At 5 miles
 and 1005 varas enters timber on
 Alligator Branch, At 1100 varas
 (6 MI) cross said branch, at 6. miles
 a mound whence an Elm 6
 inches in dia. bears N 47° E
 3 varas, an Elm 10 inches in
 dia. bears west 2 1/2 varas and
 a Forked Elm 14 inches in dia.
 bears S. 47° W 4 varas, at 6. miles
 and 600 varas Newmans Lake
 about 400 varas in Limestone
 County and W. C. Hales house
 about 800 varas in Navarro
 (7 MI) County, at 7 miles a Post on
 the north bank of Pine oak creek
 whence an Ash 14 inches in dia
 bears N 81° W 8 1/2 varas, an ash
 18 inches in dia, bears S 45 1/2° W.
 6 varas and a leaning Ash
 14 inches in dia bears N 14° W.

- 325 varas. From this point a
 line N 4° E crosses Pine oak
 Creek at 23 varas and again
 (8 M) at 53 varas. At 8 miles around
 and Red Bud, and Wild China
 marked C T and VIII, M. From this
 point a line N 4° E reaches Pine
 (9 M) oak Creek at 140 varas. At 9,
 miles around whence a
 Mesquite bears S 84° E 19 varas
 marked $\frac{X}{7}$ in George's pasture
 (10 M) in the J. G. Minor League, at 10
 miles around, in Dan's pasture,
 (11 M) at 11 miles around and Mes
 quite 6 inches in dia marked $\frac{XIX}{7}$
 (12 M) At 12, miles around on high
 prairie hill in sight of Wortham
 whence another mound bears
 (13 M) S 4° N 48 varas, at 13, miles and
 162 varas, a large Rock, the
 corner of Limestone, Navarro
 and Brantley counties, which
 stands in the prairie and
 bears S 11° N, 785 varas from the
 N. W. corner of the R. B. Longbottom
 71, labor's Survey. From the be
 ginning to the 9, mile point, the

line runs mostly through
bottom timber, brans and
scattering post oaks, the line
is made by four chops or
hacks, and lies adjacent
C.T. N. L. Graves

A. Nash ^{Chairman} County Surveyor of Limestone Co Texas
Dau Clark ^{Chairman} County Surveyor of Navarro Co Texas

Groesbeck Texas

Nov 5th 1879

The State of Texas

County of Limestone J. S. Walker
Clerk Limes-

tone County Texas do hereby
certify that the above and
following is a true and cor-
rect copy of the original
field notes of survey on bound-
ary line of Limestone and
Navarro Counties, as appear
of record in Coms Court
minutes Book B. pages 404

2405

Given under my hand & seal
of office at Groesbeck this 7th
7th day of Nov. 1880. J. S. Walker Clerk.
By R. Wiley Deputy

Limestone Co Bdry Line 2 ⁵⁹

Fieldnotes
of
line between Limestone
&
Savanna Counties.

Filed Febr. 8th 1880.

Rhoads Fisher
Ch. Clk.



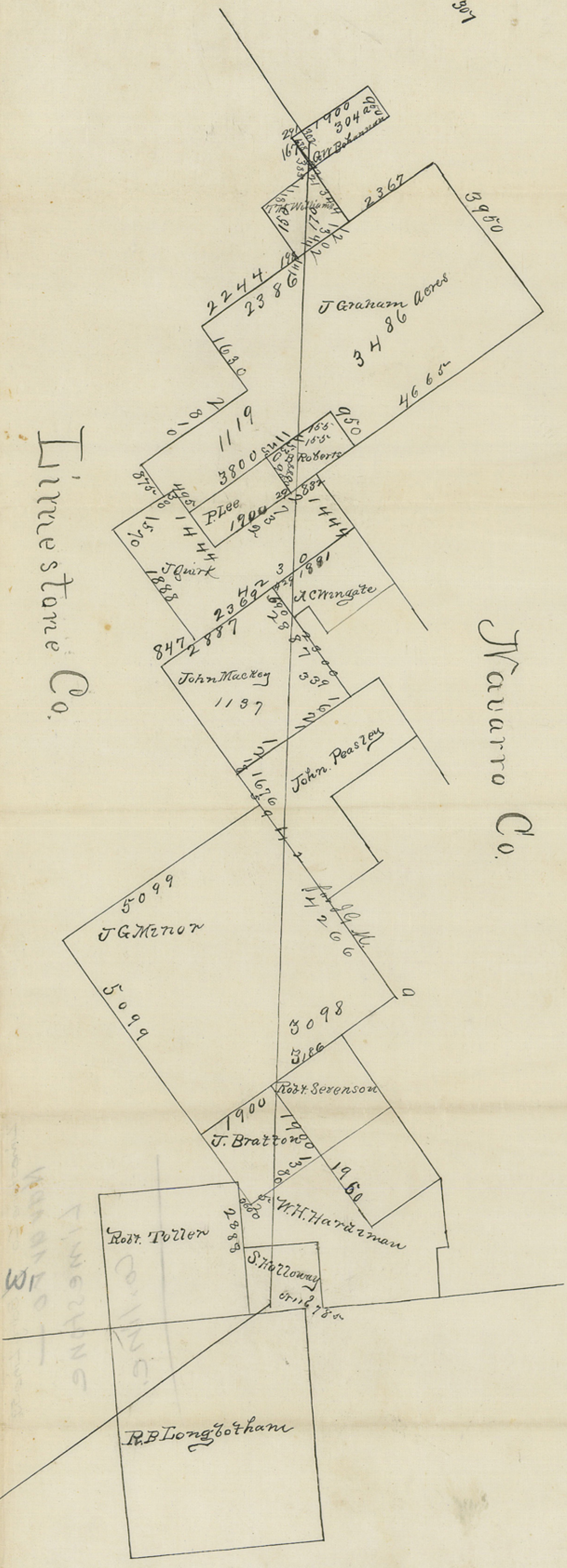
110
132
24.502

250 Ram

counter 56305

Irrestone Co.

Navarro Co.



copy 58306

Irrestone Co. Navarro Co. line

Irrestone Co. Navarro Co. line