

Lipscomb Co. Survey Line Map

P. O. BOYD
DISTRICT AND COUNTY CLERK
LIPSCOMB COUNTY
LIPSCOMB, TEXAS

Dec. 11, 1936.

113
N

Hon. J. H. Walker,
Land Commissioner,
Austin, Texas.

Dear Sir:- I enclose herewith field notes and court order regarding the Lipscomb-Ochiltree County Line survey, which I hope will clear this matter up.

Yours very truly,

P. O. Boyd, County Clerk.

RECEIVED

DEC 14 1936

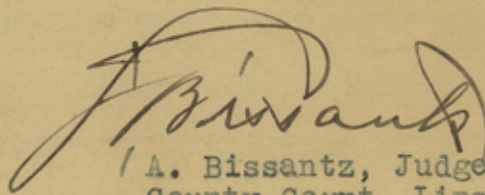
REFERRED TO ~~MINERALS~~ *map*

THE STATE OF TEXAS)
 COUNTY OF LIPSCOMB. |

IN THE COUNTY COURT OF
 LIPSCOMB COUNTY, TEXAS.

On this the 30th day of ~~November~~, A.D. 1935, came on to be considered by the Court the final report, Field Notes and Plats of the Survey of West Line of Lipscomb County, Texas, as established by E. H. Ervin, representing Lipscomb County, duly qualified by giving Special Bond and taking Oath of Office as required by Statute and Rupert C. Allen, representing Ochiltree County, Texas; which was filed in this Court, ~~November~~ ^{November} 30th, 1935: Said report having been read and inspected by the Court and being of the opinion that the Survey has been made according to Law.

Therefore it is Ordered, Adjudged and Decreed by the Court that the report, Field Notes and Plats be in all things approved and that the same be duly recorded in the Minutes of this Court and the Clerk is directed to forward to Hon. J. H. Walker, Commissioner of the General Land Office, Austin, Texas, copy thereof with his certificate showing Recordation.



A. Bissantz, Judge of the
 County Court, Lipscomb
 County, Texas.

REPORT OF SURVEY OF WEST
LINE OF LIPSCOMB COUNTY, TEXAS.

STATE OF TEXAS,)
COUNTY OF LIPSCOMB.)

TO THE HONORABLE COUNTY COURT OF LIPSCOMB COUNTY:

In compliance with your order to establish and mark the west boundary of Lipscomb County: We, the undersigned Land Surveyors met on the 21st day of August, A.D. 1935 at the Northeast Corner of State of Texas, as established and marked on the ground by Samuel S. Gannett, boundary Commissioner appointed by the Supreme Court of the United States to run, locate and mark the boundary between the State of Oklahoma and the State of Texas along the 100th Meridian of Longitude. Said N.E. Corner being marked by Concrete Monument 30" square base set 24" in ground surmounted by a galvanized iron form 18 inches in diameter at the top, 24 inches in diameter, at the bottom 33 inches above the surface of the ground. A bronze tablet is set in top of Monument and inscribed as follows: "THE SUPREME COURT OF THE UNITED STATES
Northeast Corner of Texas, 1928.
Latitude 36° 30' 00"
Longitude 100° 00' 00"
(Geodetic)"

From this Monument we measured due west and tied in other Monuments in that vicinity.

We, as Surveyors, disagreed as to the true corner of beginning, Allen contending that the Gannett Monument is the proper beginning corner and Ervin contending that the large Rock Monument 703.55 vs. west and south 15.65 vs. We chained west from Gannett Monument 30 miles. Ervin decided to go to Austin and place the disagreement before Hon. J. H. Walker, Commissioner of the General Land Office of Texas for hearing. On Monday, August 26, Commissioner Walker held the hearing, both Counties being represented by their Attorneys and Surveyors. Under date of August 28th, he submitted to each Surveyor written instructions as provided by Statute as to place of beginning the Survey and place of ending. ~~Following~~

Following said instructions we on Monday Sept. 2, 1935 proceeded to the vicinity of the N.E. Corner of Ochiltree County and N.W. Corner of Lipscomb County, as established by W. D. Twichell in the year 1897. The Monument set by him had been obliterated; therefore, we re-established the Corner from objects called for in field notes of his survey. From this point we proceeded to lay out and mark the said boundary line in accordance with instructions aforesaid and with our findings in the field, and also with final instructions of Sept. 16, 1935.

A full description of said survey is given in the following pages of field notes and two plats hereto attached marked EXHIBIT "A", EXHIBIT "B" and EXHIBIT "C" respectively.

Respectfully Submitted,

E. W. Erwin

Special Surveyor for
Lipscomb County, Texas.

Rupert C. Allen

Special Surveyor for
Ochiltree County, Texas.

Exhibit "A"

FIELD NOTES OF THE SURVEY OF
West Line of Lipscomb County and
East Line of Ochiltree County

as Surveyed by

E. H. ERVIN, Acting Surveyor for Lipscomb County and RUPERT C. ALLEN Special Surveyor for Ochiltree County, Texas, having been duly appointed by the County Courts of our respective Counties, at the August Terms of said Courts, 1935 to establish the County Line between said Counties herewith return the following field notes of the Survey as made by us.

BEGINNING at Concrete Monument set 30" in ground and projecting 9" above ground, same being 9" in diameter at top in which is set brass tablet in top marked "1935" across top or North side, "N.W. Cor. LIPSCOMB" on southeast and "N.E. Cor. OCHILTREE" on S.W. Side; from which closing corner on Oklahoma-Texas Line on the 36° 30' parallel N. Latitude bears east 2498 varas. Said closing corner being a Concrete Monument with brass tablet with the following markings: (CC. T1S, R23E, S1, S6, TEXAS, 1933) The word Texas and 1933 being on the south portion of said tablet and the east and west lines drawn between Texas and the description of Sections. This Monument is due south from Section Corner in Oklahoma which is Township Line between Range 23 E. and Range 24 E. We set Concrete Monument for our initial Monument as the Rock set by Twichell in 1897 was obliterated.

Needle Va. 11° 30' E. The County Corner Monument is lined in between closing corners set in the 36° 30' North Latitude as established by the U. S. General Land Office in 1933, therefore, we take right angles from said line.

COURSE OF COUNTY LINE SOUTH.

Mile No. 1.

Thence South at 987 varas, north line of Survey 30, Block 10, H. T. & B. R.R. Co. Grant, same being the south line of Survey 10, Block D. J. P. Weiser Grant, from which N.W. Cor. said Survey 30, Block 10 bears west 336 varas, N.E. Cor. of said Section bears East 1581 varas, 1900.8 varas to Mile Post No. 1, a 2" galvanized pipe marked "L" on East; "O" on West, "1 Mi." on North and "1 Mi." on South.

Mile No. 2.

At 984 varas North Line of Section ⁵⁹58, Block 10, 1900.8 varas to Mile Post No. 2.

Mile No. 3.

At 978.5 varas North Line of Section 118, Block 10, N.W. Cor. of said Section 118 bears west 363.4 varas at 1889.3 varas cross North fence on Right-of-Way of North Texas and Santa Fe Railway Company 1900.8 varas to Mile Post No. 3, a 2" galvanized pipe set marked "LIP" on East; "OCH" on West; "3 Mi." on North and "3 Mi." on South.

Mile No. 4.

At 26.2 varas cross center line of N.T. & S.F. R.R. Co. Main Tract said tract bears N. 89° 47' W. at 96.5 Highway marker 8 x 8 with bronze plate inscribed as follows: "Texas FAP 662A Sta. 3781/156 length 14.663 Mi., built 1934", bears West 30.4 varas at 113 varas center of State Highway No. 117 at 976.6 North Line of Survey 147, Block 10, 1900.8 varas to Mile Post No. 4.

Mile No. 5.

At 977.9 varas South Line of Section 147, Block 10, and North Line of Section 1174, Block 43, H. & T.C. Ry. Co. Grant, The S.W. Cor. of said Section 147 bears west 376.6 varas. The N.W. Cor. Section 1174 bears west 119.5 varas, 1900.8 varas to Mile Post No. 5.

Mile No. 6.

At 984.5 varas North Line of Section 1115, Block 43, 1900.8 varas to Mile Post No. 6.

Mile No. 7.

At 989.5 varas North Line of Section 1086, at 1900.8 varas to Mile Post No. 7.

Mile No. 8.

At 993 varas North Line of Section 1027, from which Old E. Mound Corner and 4 pits by Joe L. Long bears West 108 varas; the N.W. Cor. of Section 1029 called for by W. D. Twichell bears East 1 mile 1847.4 varas 1900.8 varas, Mile Post No. 8.

Mile No. 9.

At 994 varas North Line of Section 998, 1900.8 varas to Mile Post No. 9.

Mile No. 10.

At 1019 varas North Line of Section 939, 1900.8 varas to Mile Post No. 10.

Mile No. 11.

At 1020 varas North Line of Section 910, 1900.8 varas to Mile Post No. 11.

Mile No. 12.

At 1023 varas North Line of Section 851, 1900.8 varas to Mile Post No. 12.

Mile No. 13.

At 1033 varas North Line of Section 822, Joe L. Long, Rock Md. Cor. bears West 96.6 varas, 1900.8 varas to Mile Post No. 13.

Mile No. 14.

At 1032 varas cross North Line of Section 763, 1900.8 varas to Mile Post No. 14.

Mile No. 15.

At 1031 varas cross North Line of Section 734, 1900.8 varas to Mile Post No. 15.

Mile No. 16.

At 1030 varas cross North Line of Section 675, 1900.8 varas to Mile Post No. 16.

Mile No. 17.

At 385 varas North Bank Gilhulo Creek, 1900.8 varas to Mile Post No. 17.

Mile No. 18.

At 1028 varas North Line of Section 587, 1300 varas to Cap-Rock on North side of High Hill, 1354 varas to top of said Hill, 1900.8 varas to Mile Post No. 18.

Mile No. 19.

At 1028.5 varas North Line of Section 558, rock mound by Joe L. Long, bears west 97.3 varas, 1900.8 varas to Mile Post No. 19.

Mile No. 20.

At 1060 varas North Line of Section 499, 1900.8 varas to Mile Post No. 20, in valley of Wolf Creek.

Mile No. 21.

At 496 varas cross center of Wolf Creek, at 1092 varas North Line of Section 470, from which N.W. Cor. of said Section 470 by Joe L. Long bears West 103.4 varas, 1851 varas cross center of Gibson Creek, 1900.8 varas to Mile Post No. 21.

Mile No. 22.

At 520 varas top of High Bank on South side of Draw, 1098 varas to North Line of Section 411, from which rock mound made for N.W. Cor. of said Section 411 by Joe L. Long bears West 116.6 varas at 1840 varas Cap-Rock, 1900.8 varas, a 2" galvanized pipe marked 22 Mi. and pile of stone, Mile Post No. 22.

Mile No. 23.

Thence South at 1117 varas, rock mound the S.E. Cor. of Section 410 bears West 105 varas, at 1900.8 varas, Mile Post No. 23.

Mile No. 24.

At 1137.5 varas cross North Line of Section 323, at 1900.8 varas, Mile Post No. 24, a 2" pipe and rock mound.

Mile No. 25.

At 1135.5 varas North Line of Section 294, at 1357 varas North Edge of Cap-Rock at 1900.8 varas to Mile Post No. 25, a 2" pipe and rock mound.

Mile No. 26.

At 1145 varas cross North Line of Section 235, 1900.8 varas to Mile Post No. 26.

Mile No. 27.

Mile No. 27.

At 1162 varas North Line of Section 206, 1900.8 varas to Mile Post No. 27.

Mile No. 28.

At 1169.5 varas center of Graded Road from Canadian to Perryton, S.E. Cor. of Section 207 bears West 150.5 varas, 1900.8 varas to Mile Post No. 28.

Mile No. 29.

At 173.9 varas Northeasterly Right-of-Way fence on State Highway No. 4 at 176 varas, Highway Right-of-Way Markers bears East about 7 varas at 214.8 varas Southwesterly Right-of-Way fence on said Highway, road bears N. 63° 9' W. at 1172 varas cross North Line of Section 118, 1900.8 varas to Mile Post No. 29, a 2" pipe set and rock mound.

Mile No. 30.

At 1197 varas to North Line of Section 59 in said Block 43, from which the N.W. Cor. of Section 58, Block 43, bears West 146 varas, From said Corner point of Bluff bears S. 42 $\frac{1}{2}$ ° W. center of Natural Mound bears S. 23 $\frac{1}{2}$ ° E. This is evidently the N.W. Cor. of 58 as established by Joe L. Long, at 1900.8 varas set 2" pipe marked "Lipscomb" on East, "Ochiltree" on West, "30 Mile Post, 1935" on North side, "30 Mile Post, 1935" on South

side and rock mound. This corner has the following bearings: Point of Hill bears N. 26° 5' E. Low Cap-Rock bears S. 62° E. about 200 varas East Point of Measa in valley bears S. 6° E. East point of Cap-Rock bears S. 30° 18' W.

Center of Square Fence about 8 feet each way in valley west of Morgan Creek bears S. 76° 22' W. about 3/8 of a mile. Morgan Creek bears west about 1/4 mile. Center of High Red Bluff bears N. 65° W. Windmill bears N. 7° 22' W. about 1 and 1/4 miles. 30 miles plus 1214.7 varas to Concrete Monument for S.W. Corner Lipscomb County and S.E. Corner of Ochiltree County, 24" in ground and 10" above ground in which we set brass tablet marked "1935", "S.W. Cor. Lipscomb" and "S.E. Cor. Ochiltree". From this Monument an iron pipe about 4 feet above ground, 1 1/2 inches in diameter marked "30" and large rock mound bears east 650.5 varas. From this corner the N.W. Corner Section 132, Block 42, H. & T.C. Ry. Co. Grant appears to bear South. An iron pipe marked "29" bears east about 1 mile. This corner is apparently the N.W. Corner of Hemphill County and S.W. Corner of Lipscomb County as established by Spiller & Cunningham in the year of 1889.

From said Monument 30 plus 1214.7 varas, a pipe set about 2 feet above ground marked "R" on South, "O" on North, "1" on East side and "29" on west side bears N. 89° 40' W. 1250.3 varas. This is evidently Mile Post No. 1, between Roberts and Ochiltree County, as set by Hedgecocke as it is 1900.8 varas from the Hemphill-Lipscomb County Corner. From said Monument 30 plus 1214.7 varas, we took the following bearings: Center of Natural Mound South of Morgan Creek bears S. 12° 45' W. Center of Natural Mound N. 81° 30' W. Cap-Rock on East Point of Bluff west of Creek bears N. 51° W. North point of Cap-Rock N. 53° 30' E. S.W. point of Cap-Rock S. 63° 30' E.

At each Mile along the line above described, we set 2" galvanized pipe about 3 1/2 feet long with 6" turn at botton, each being marked "L" on east, and "O" on West, and the appropriate Mile Number on the North and on the South side.

The acreage in Lipscomb County and Ochiltree Countyvinsurveys traversed by the line is shown on the attached plat, marked "Exhibit B". Dated September 27th, A. D. 1935.

Terry Shaxhan)
(Chainmen
Valda Lackey)

M. R. Coffee, Jr.)
(Flagmen
Dave Shanks, Jr.)

E. N. Erwin
Special Surveyor for
Lipscomb County, Texas.

Rupert C. Allen
Special Surveyor for
Ochiltree County, Texas.

PLAT OF A SURVEY

OF THE

WEST BOUNDARY OF LIPSCOMB CO. EAST BOUNDARY OF OCHILTREE CO.

SURVEYED BY

RUPERT C. ALLEN, Special Surveyor Representing Ochiltree Co.

E. H. ERVIN, Special Surveyor Representing Lipscomb Co.

Scale 1 in = 1 Mile

True Course of County Line - South

SURVEYOR'S CERTIFICATE

We, Rupert C. Allen & E. H. Ervin, Special Surveyors for Ochiltree & Lipscomb Cos. do hereby certify that the plat here on is true and correct and of a survey made by us on the ground, pursuant to orders of the County Courts of Lipscomb & Ochiltree Counties Texas, authorizing the survey and marking of the common boundary between said Counties.

In Witness whereof we sign this the 7th day of September, 1935.

Rupert C. Allen

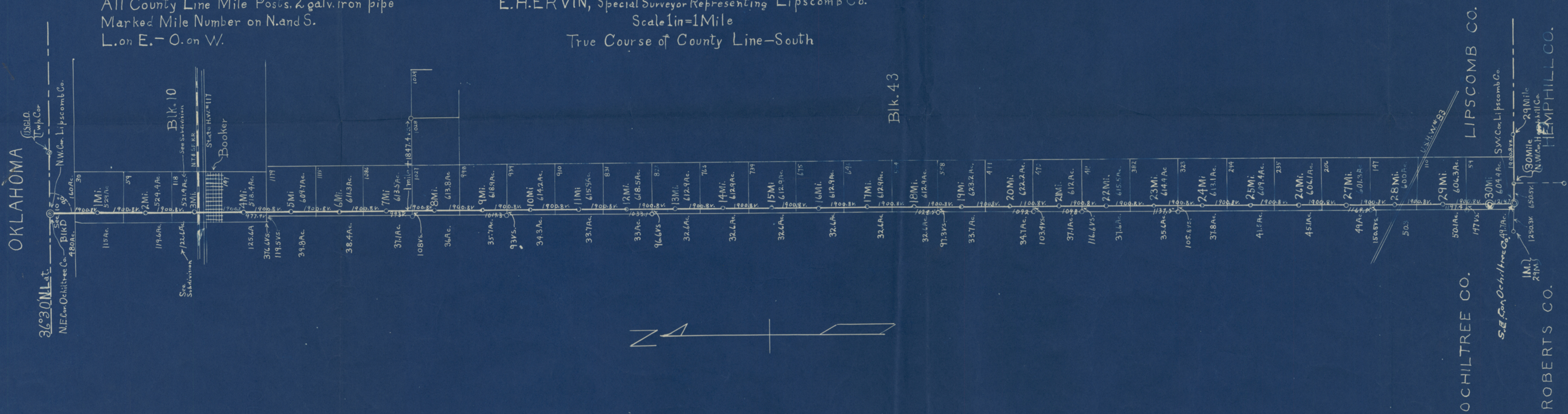
Special Surveyor for Ochiltree Co.

E. H. Ervin

Special Surveyor for Lipscomb Co.

NOTE-

All County Line Mile Posts, 2" galv. iron pipe
Marked Mile Number on N. and S.
L. on E. - O. on W.

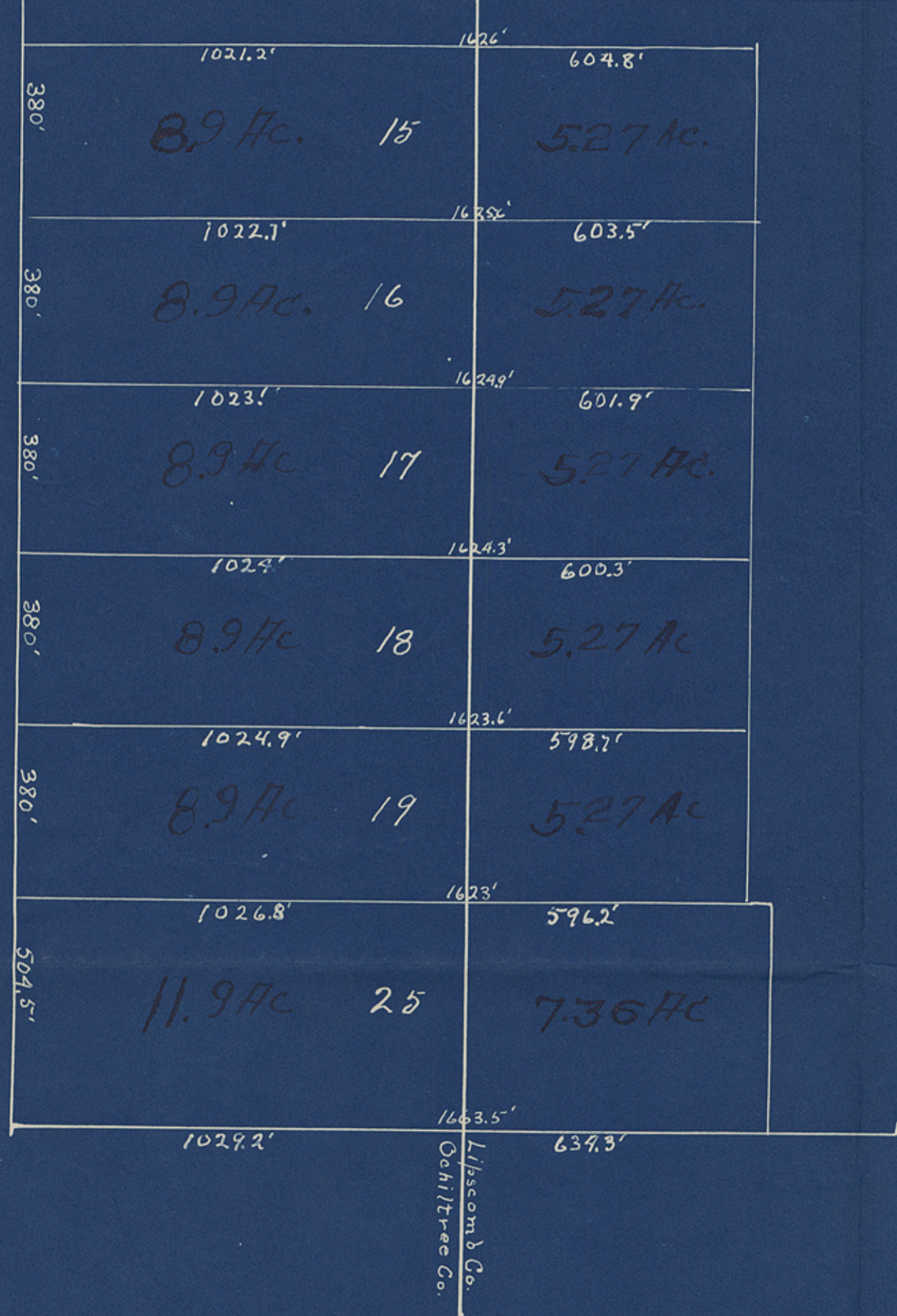


Blk. 43



PLAT of West Side
of
Booker Texas.
Survey 118 Blk. 10 H.T. & B.R.R. Co
Lipscomb Co. Texas.

Scale, 1 inch = 300 ft.



Rupert C. Allen
Special Surveyor Ochiltree Co.
E. H. Erwin
Special Surveyor Lipscomb Co.

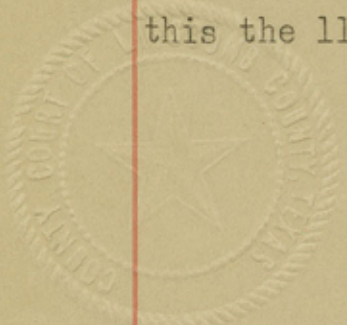
The State of Texas,)
County of Lipscomb.)

I, P. O. Boyd, Clerk of the County Court in and for Lipscomb County, Texas, hereby certify that the foregoing is a true and correct copy of the Order of the Court and the Field Notes in the matter of the survey of the West line of Lipscomb County, and the East line of Ochiltree County, as same appears from copies on file and of record in Volume 3, Pages 187 et seq, of County Court Minutes of Lipscomb County, Texas.

Witness my hand and the seal of said Court at Lipscomb, Texas, this the 11th day of December, A. D. 1936.

P. O. Boyd

Clerk, County Court,
Lipscomb County, Texas.



Lipscomb Co. Bdry Line 146

The State of Texas,
County of Lipscomb.
I, P. O. Boyd, Clerk of the County Court in and for Lipscomb
County, Texas, hereby certify that the foregoing is a true and
correct copy of the Order of the court and the Field Notes in the
matter of the survey of the West line of Lipscomb County, and the
East line of Ochiltree County, as same appears from copies on file
and of record in Volume 3, Page 187 et seq., of County Court Minutes
of Lipscomb County, Texas.

Received and Filed
Dec. 11th 1936
J. H. Walker, Commr.

[Signature]
Clerk, County Court,
Lipscomb County, Texas.

Attest.
File Clerk.

