



# General Land Office

State of Texas

Austin

BASCOM GILES, COMMISSIONER

JOHN W. HAWKINS, CHIEF CLERK

January 12, 1940

Mr. E. H. Ervin  
Special Surveyor  
Lipscomb, Texas

Dear Sir:

Inclosed find photostatic print of the Lipscomb-Ochiltree boundary line, as surveyed by you and Mr. Rupert C. Allen, as special surveyors for these two counties, which print shows a few corrections in the acreage from your figures. We have had to follow the acreage as shown from the official files at the present time in determining the total in each survey.

You will notice at the North end of this line, I have inserted one extra survey not shown by you; this being the 90.4 acre Survey Number 3, S.F. 13869, lying immediately North of survey 10, W. P. Wiser 640 acres, and South of the Oklahoma line. This tract of land was surveyed for Evan Anderson by Albertis Montgomery, Licensed State Land Surveyor, and the field notes are recorded in the office of Rupert C. Allen, County Surveyor of Ochiltree County, Volume 2, Page 142, and awarded to Evan Anderson by this office on November 15, 1938. These field notes show that one acre is in Ochiltree County, but we have abstracted the full 90.4 acres in Lipscomb County.

Carbon of this letter, and photostat copy of the boundary line is being sent to Mr. Rupert C. Allen, Special Surveyor at Perryton.

I wish to congratulate you two gentlemen on this nice piece of work.

Very respectfully

*Bascom Giles*

Bascom Giles  
Commissioner  
General Land Office

1 Incl.  
cc: to Assr-Coll.  
Lipscomb Co.  
RBN:cl

*Vertical stamp or handwritten note on the right margin, partially illegible.*





BASCOM GILES, COMMISSIONER  
JOHN W. HAWKINS, CHIEF CLERK

# General Land Office

State of Texas

Austin

January 12, 1940

A large, stylized handwritten signature or set of initials, possibly "C. G.", written in dark ink.

Assessor-Collector  
Lipscomb County  
Lipscomb, Texas

Dear Sir:

Inclosed please find photostat copy of the Lipscomb-Ochiltree boundary line showing number of acres in each tract of land in each county thru which the County line runs.

The acres in Ochiltree County are shown to the left of the County line, and in Lipscomb County on the right side of the line, in the Section Number, and the total number of acres to the right of the section, with the Land Office File number, which you will readily understand. In many instances the acreage shown by the surveyor sketch does not agree with the latest field notes filed in this office.

We have followed the acreage as shown on our files at this time. The connected acreage-division shown on this print will be reflected in the next printed Abstract Volume, Number 62.

Carbon of this letter, and an exact photostatic copy of the boundary line is being mailed to the Assessor-Collector of Ochiltree County, at Pertyton.

Very respectfully

A large, cursive handwritten signature of Bascom Giles.

Bascom Giles  
Commissioner  
General Land Office

1 Incl.  
cc: to Assr-Coll-  
Ochiltree Co.  
REN:cl

1/12/40  
1/12/40  
1/12/40



90<sup>th</sup> a. all Lipscomb.

Some addit. as Ab. Vol. 7 →

W.P. Wiser 5-4272 ptd.			W.P. Wiser		
31	30	29			
5-5271	61989	5-5270	644 <sup>a</sup>		
58	59	60			
5-5285	61986	61986	644 <sup>a</sup>		
119	118	117			
5-5688	F Cook	BOOKER	644 <sup>a</sup>		
146	147	148			
5-5676	61987	61987	644 <sup>a</sup>		
1175	1174	1173			
5-6575	W.F. Vick	5-6574	647 <sup>a</sup>		
1114	1115	1116			
5-6448	S. Witcher	66062	640 <sup>a</sup>		
1087	1086	1085			
5-6434	A.M. Willis Jr	5-6433	647 <sup>a</sup>		
1026	1027	1028			
5-6404	A.M. Willis Jr	67745	640 <sup>a</sup>		
999	998	997			
5-6390	W.F. Vick	5-6389	646 <sup>5a</sup>		
938	939	940			
5-6360	67594	67594	640 <sup>a</sup>		
911	910	909			
5-6346	C.B. Bowen	5-6345	646 <sup>5a</sup>		
850	851	852			
5-6316	C.B. Bowen	62381	640 <sup>a</sup>		
823	822	821			
5-6302	A.B. Wilkins	5-6301	646 <sup>5a</sup>		
762	763	764			
5-6272	50347	50347	640 <sup>a</sup>		
735	734	733			
5-6258	5-6257	5-6257	646 <sup>5a</sup>		
674	675	676			
5-6228	O.M. Larson	47987	640 <sup>a</sup>		
647	646	645			
5-6214	5-6213	5-6213	646 <sup>5a</sup>		
586	587	588			
5-6184	J. Widmer	53015	640 <sup>a</sup>		
559	558	557			
5-6170	5-6169	5-6169	648 <sup>3a</sup>		
498	499	500			
5-6140	M.E. Messerly	109066	640 <sup>a</sup>		
471	470	469			
5-6126	5-6125	5-6125	1/4 = 320 <sup>a</sup> 5/2 = 328 <sup>a</sup> ptd.		
410	411	412			
5-6096	59941	59941	640 <sup>a</sup>		
383	382	381			
5-6082	5-6081	5-6081	652 <sup>6a</sup>		
322	323	324			
5-6052	5-6051	5-6051	640 <sup>a</sup>		
295	294	293			
5-6038	5-6037	5-6037	647 <sup>4a</sup>		
234	235	236			
5-6008	A.F. Small	61756	640 <sup>a</sup>		
207	206	205			
5-5994	5-5993	5-5993	648 <sup>6a</sup>		
146	147	148			
5-5964	W.B. Johnson	69554	640 <sup>a</sup>		
119	118	117			
5-5950	5-5949	5-5949	654 <sup>a</sup>		
58	59	60			
5-5920	60060	60060	640 <sup>a</sup>		
31	30	29			
5-5906	5-5905	5-5905			

COUNTY

OCHILTREE

Lipscomb

50

55

60

65

70

75

80

85

W

85

80

75

70

65

60

55



*Abstracted in Vol. 62  
Jan. 1940*

PLAT OF A SURVEY  
OF THE  
WEST BOUNDARY OF LIPSCOMB CO.  
EAST BOUNDARY OF OCHILTREE CO.

SURVEYOR'S CERTIFICATE

We, Rupert C. Allen & E. H. Ervin, Special Surveyors for Ochiltree & Lipscomb Cos. do hereby certify that the plat here on is true and correct and a survey made by us on the ground, pursuant to orders of the County Court of Lipscomb & Ochiltree Counties Texas, authorizing the survey and marking of the common boundary between said Counties.  
In Witness where of we sign this the 7th day of September, 1935.

*Rupert C. Allen*

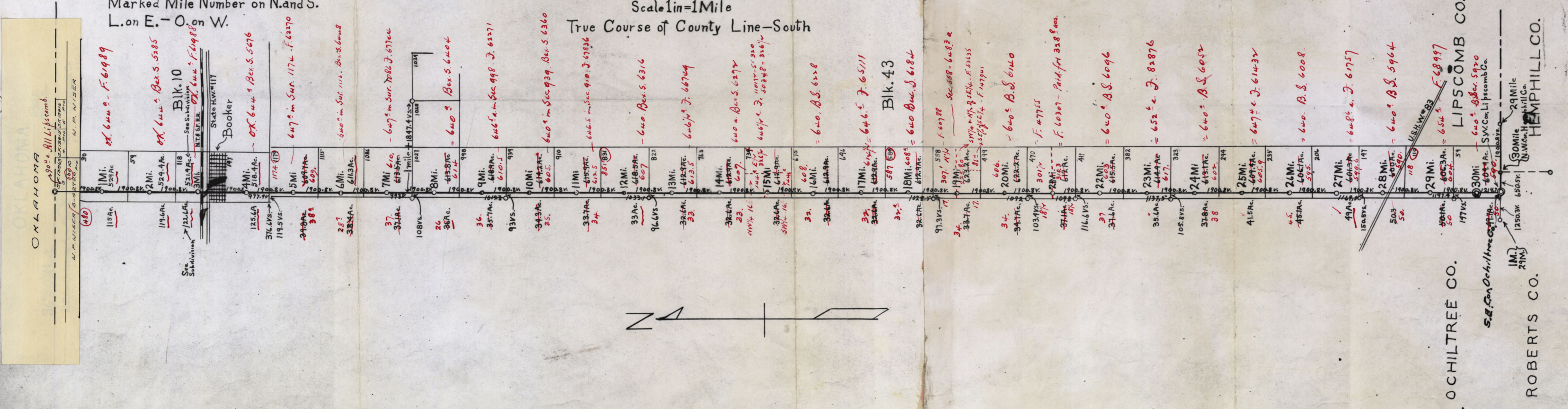
Special Surveyor for Ochiltree Co.

*E. H. Ervin*

Special Surveyor for Lipscomb Co.

SURVEYED BY  
RUPERT C. ALLEN, Special Surveyor Representing Ochiltree Co.  
E. H. ERVIN, Special Surveyor Representing Lipscomb Co.  
Scale 1 in = 1 Mile  
True Course of County Line - South

NOTE -  
All County Line Mile Posts, 2" galv. iron pipe  
Marked Mile Number on N. and S.  
L. on E. - O. on W.



OKLAHOMA  
N. A. WISER

LIPSCOMB CO.  
OCHILTREE CO.  
ROBERTS CO.  
HEMPHILL CO.