

July 12th 1888. Page 1

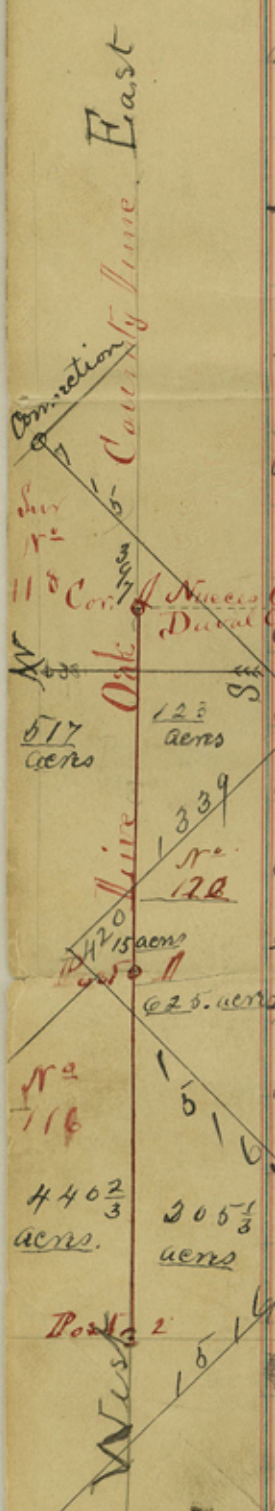
The State of Texas Survey of County Bdy. br-
County of Live Oak Turn Live Oak and Mc
Mullen Counties:

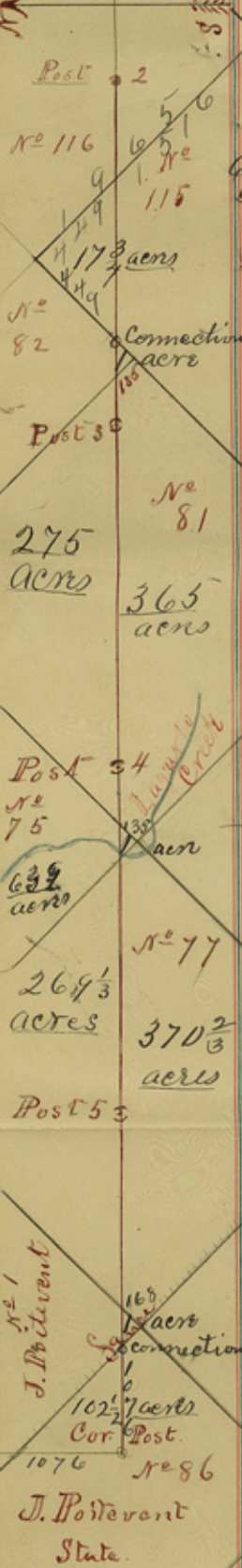
Field Notes of a Survey made
to establish the Western Boundary of Live Oak
County, and the Eastern Boundary of Mc-Mul-
len County. by virtue of an order of County
Commissioners Court of said Live Oak Co.
made at its May Term 1888.

Beginning at a large Mngt Post M^d
D. on its S. W. side, and N on its S. E. Side
and T₁ on its North Side, said post being
set in a mound of Concrete Stone & mortar,
for the common cor. between Nueces and Duval
Counties, and in the South bdy of Live Oak Co.

Beginning at described post, whence the East
Cor. of State Survey No 118 brs. East 397 vrs. -
and then N 45° E 715 vrs. - Thence West at
65° 8 vrs. pass Mt V N 10 E. from which Messet
another Messet T₁ brs. N 33 W 21 vrs. - at 1900⁴/₅ vrs
set a post M^d 1, ^{and L.D.} at 2360 vrs. Salanta hill
brs. S 62¹/₂ W., and Loma Blanco brs N 10 W - at ²⁸⁰⁰~~2600~~
vrs. cross a branch running S 69 W. - at 3160 vrs.
Salanta hill brs. S 57 W. and Loma Blanco brs.
N 4 E. at 3760 vrs Cross road from Cardwells
branch to Mindietta running South - at 3801³/₅
vrs. set post 2 M^d L.D.

July 13th 1888. at 4847 vrs. cross at E bdy of





Section No 81. - its East cor, brs. S45 E 134 vrs. - at 5708.4 vrs. Set Post 3 Mk^d T. D. - at 6142 vrs. Salarita hill brs. S 7 N. - at 7603.2 Set Post 4, Mk^d T. D. - at 7740 vrs. to the middle of the channel of Lagarto Creek runs S 23 1/2 N. - at 9504. vrs. set post 5 Mk^d T. D. - at 10328 vrs. Cross fence on S. W. bdy. of J Poitevent Sur N^o 1.; its South cor. post brs. S45 E 168 vrs. - at 10943 vrs. on top of open hill Brydens Ranch Wind Mill brs. N 1 N, and ranch West of the Pinaes Circado brs. S 69 N. - at 11404, ⁸⁶100 vrs. Set a Post 10 in. in Dia Mk^d on South Side D D on N. W. Side Mk^d M; and on the N. E. Side Mk^d T. O. Said Post bring set on the North Bdy. of Duval Co.; and is also the S. E. cor. of Mc Mullen Co y S. W. cor. of Live Oak County - Whence a Mesgt. 10 in. in Dia and Mk^d M; brs. N 5 1/2 N. 7 vrs.; also mesgt. 10 in. in Dia. T. brs. N 17 3/4 E. 27 vrs.; also mesgt Mk^d D brs. S 2 1/2 E 14 1/2 vrs.

H. K. Solis

Post VI

State Sur. No 6
~~555 2/3~~
acres
540

87 2/3 acres
160

Thence North 500 vrs cross The Tinajas Circadas running N45 E. - at 1078 vrs. Cross S. W. bdy. of J. Poitevent Sur. No 1 - to West cor. brs. N45 W. 216 vrs. - 1216 1/2 vrs. Bryden's Wind Mill brs. N52 E - Loma Blanca N76 E. Salaventa hill S57 E. - at 1414 vrs. Cross fence - at 1900 4/5 vrs. Set Post II. also M^d M & L.

Post V

Sur No 5
Scale of Morris
~~555 2/3~~
551
acres.

89 2/3 acres

Camp Saturday Night

Monday July 16th 1888. - Begin at Post II. Continued North - from said Post - at ⁴⁰⁴ 404 vrs. a fence E + W. - at ¹²⁹⁴ 1294 vrs. cross a fence running N45 W. - at 7450 cross the Fruste or Lagarto Creek. - at ⁸⁶ 1900 1/5 vrs. Set Post III. m^d also M & L - Thence North from said last post - at ⁹⁷ 97 vrs. cross a fence ^{in a field} - at ³⁴⁰ 340 vrs. cross another fence running N45 E. - at ⁴⁶⁰ 460 vrs. Cross Tilden & San Diego road. Set a post 8 in. in dia. M^d M & L - at ¹²⁸⁰ 1280. a chimney at the Rancho Campana brs. S76 W. - at ¹³⁰⁰ 76 1300 vrs. Said chimney brs. S76 1/4 W. - at ¹⁸²⁰ 1820. vrs. Cross San Diego & Tilden road. a Mesq. tree M^d M & L. - at 1900 4/5 vrs. Set Post IIII, also M^d M. L. - Continued North from said Post. at ⁴¹⁹ 419 5/5 vrs. Cross fence (running E. + W.) West 241 vrs. from the S. E. cor. of Sur. No 50. - at ¹⁴⁶⁹ 1469 vrs. cross New Tank (20 vrs wide) - at ¹⁵⁰⁰ 1500

Post IV

Sur No 50
~~557 1/4~~
acres

82 3/4 acres
211
Connection

Post III

No 49
A. B. & M
569
acres

80 acres
Tilden Road

Field
No 2
R. H.
39 1/2
Corbett
Creek
No 39
A. B. & M
160
158
78 acres
No 40
63
acres
Post I

1900 4/5 vrs. Set Post IV. M^d also M & L. Continued North from said Post - at 415 vrs. cross North bdy. of said Sur. No 50. its N. E. cor. Post

Post I

State Sur. No 40
63
acres

102 1/2 acres
1076
connection

State Sur. No 86

Tinajas Circadas
Cor.

635
connection

Post XII
 Sur. No 192
 State 439

State
 Sur. No 194
 147 3/4
 acres

Post XI
 492 1/4
 acres 510

State
 Sur. No 24
 246
 acres 439

West's fence
 Post X
 State
 Sur. No 14
 Bartlett's Road
 442 1/4
 acres 143
 497

Post IX
 State
 Sur. No 12
 442 1/4
 acres 132
 508

Post VIII
 State
 Sur. No 10
 442 1/4
 acres 519

Post VII
 Sur. No 7
 Scale
 4
 Morris
 529 1/2
 acres 8 1/2 acres 110 1/2

Post VI
 Sur. No. 6

State
 Sur. No 382

Ho Kingsheads
 fence

Kingsheads
 fence

brs. East 251 vrs. - at 1900 4/5 vrs. Set post V. Mkt^d
 also M & L. - Continued North from said post at
 900 4/5 vrs. Set Post VI. Mkt^d M & L. - Continued
 North from said Post VI - at 925 vrs. Isillett's Wind
 Mill brs. N 8 1/2 W. - at 1623 vrs. said Wind mill brs.
 N 86 1/2 W. + at 1900 4/5 vrs. Set Post VII. - Continued
 North from said Post - at 1080 vrs. San-Cayo Mt.
 brs. N 22 W. - the Eastern point of Mount St. Roseau
 brs. N 72 W. - at 1150 vrs. The Markado Ranch.
 brs. N 44 W. - at 1760 vrs. Said Ranch brs. N 56 W. San-
 Cayo brs. N 23 1/2 W. - at 1900 4/5 vrs. Set Post 8. Mkt^d
 VIII - Continued North from said Post 8 - at
 870 vrs. Said St Roseau's Eastern point brs. N 79 1/2 W.
 San-Cayo East cor brs. N 25 1/2 W. - at 1900 4/5 vrs.
 Set Post 9 Mkt^d IX. - Continued North at 1320 vrs
 Cross Bartlett's road to Oakville - at 1900 4/5 vrs. Set
 post 10 Mkt^d M L + X. - Continued North at 440
 vrs. Cross North line of Sur. No 14. - its N. E. cor.
 brs. East 439 vrs. - at 1900 4/5 vrs. Set Post 11 Mkt^d
 XI. + M L. - Continued North from post 11 at
 1900 4/5 vrs. set post 12 Mkt^d XII. + M L.
 Continued North from Post 12 at 760 vrs. a branch
 runs East - at 1900 4/5 vrs. Set Post 13. Mkt^d XIII. and
 M L. - Continued North from Post 13. at 525 vrs. Cross
 North line of J. W. Winters Sur. No 402 268 vrs.
 East of his N. W. cor. and 361 vrs. west of N. W.
 cor. State Sur. No 382. in name of G. C. + S. F. R. R.
 Co. - at 1340 vrs. after crossing Live Oak Branch

Post = 30

E.W.B. Serugham
League
Old Road

Frio River
4 288
acres 322
acres

Michael Haley
Connection League

Post = 29

Hilden Road

1
4
2
0
1158

Post = 28

Post XXVII

John Turner
League

577
acres 4028
acres

Post XXVI

Fence Adams
Line

3
5
0
3

Post XXV

Thos Adams
League

858
acres 3747
acres
952 3 3653

Post XXIV

- at 1280 vrs. Cross an old road - at 1900⁴/₅ vrs. Set Post 30 M^d XXX, - Continued North at 793 vrs. Cross a fence - at 1280 vrs. Cross Opossum Creek at 1299 vrs. a willow 24ⁱⁿ. in Dia M^d M on the West side & II on the East Side, and ≡ on the South Side and ≡ on North Side, - at 1900⁴/₅ vrs. Set Post 31, M^d M & II, Continued North at 1030 vrs. in a branch at 1445¹/₂ vrs. Cross another branch - at 1520 vrs. on South slope of hill 39 vrs. west of a three pronged Live Oak M^d ≡ each prong 18 in. in Dia. - at 1900⁴/₅ vrs. Set post 32. M^d 32. & M.L. - Continued North at 620 vrs. cross fence - at 1900⁴/₅ vrs. Set post 33 M^d 33 & M.L., Continued North at 217 vrs. Nobli's Mount North end br. N 69 W. - at 344 vrs. Jacob's Rancher chimney br. N 5¹/₄ E. - at 1258 vrs. E.W.B. Serughams N.W. cor. br. N 76 W. ^{489¹/₂} ~~545¹/₂~~ vrs. - at 1300 vrs. Cross South bdy. of G. H & H. R. R. Dur. N^o 7^{at} 67, west of its S.E. cor. - at 1900⁴/₅ vrs. Set post N^o 34 M^d 34 + M.L. Continued North at 1280 vrs. the chimney of Jacob's House br. S 62¹/₂ E.; the most western tree on S. Santa Rita 5 tree hill br. N 4 W. - at 1900⁴/₅ vrs. set post N^o 35 M^d 35 & M.L. about 18 vrs. north of fence - The chimney of Jacob's House br. S 18¹/₂ E. - The most Western

Filed for Rec in my office Nov. 13th 1888.
And Recorded Nov. 14th 1888. in Book P.S.
Vol. 1. Pages 181, 182, 183, 184, 185, & 186.

J. J. Gilmore
Sec. Sur. L. O. Geo. P. 27
(8)

60a
5
Live Oak County
Boundary between
Ducal & M. & Muller

Filed Nov 24th 1888

Examined, approved and
applied
Dec. 13/88

Abstract Corrected
& Copy for'd Compt.
Dec 18th 88 Account

\$5.00