

IN COMMISSIONERS COURT, LLANO COUNTY, MAY TERM, 1887,

May, 10th, 1887.

Matter of Establishing boundary
lines, between Llano & Blanco, &
Llano and Gillespie Counties. }

At this time, came on for consideration the propriety of running and establishing the county boundary line between the counties of Llano and Blanco, and Llano and Gillespie counties, and establishing the South West corner of Llano county, according to law. and the fact appearing to the court, that said line and corner are not definitely established. It is therefore ordered by the court, that the clerk of this court notify the commissioners courts of Blanco, Gillespie and Mason counties each, to meet the surveyor of this (Llano county) at the mouth of Slick Rock creek, on the south side of the Colorado river, (being the south East corner of Llano county) on monday the 22nd, day of August 1887, to run, mark and establish said line and corner according to law.

June 13th, A. D. 1887.

Matter of running and establishing
County lines, between Llano & Blanco
Counties, and between Llano and
Gillespie Counties. }

It is ordered by the court, that Wm, Kyle, County Surveyor of Llano county, be and he is hereby appointed Commissioner for Llano county, to run and establish said lines in connection with the county surveyor of Blanco county, P. F. Appel, who, has heretofore been appointed as commissioner for Blanco county, as shown by certified copy of the proceedings of the Hon, county commissioners court of Blanco county.

And it is further ordered by the court that the said Wm, Kyle, proceed to run said line between Llano and Blanco county at the time specified in the order of the commissioners court of Blanco county, to wit; on the first monday in July A. D. 1887. and that the said Wm, Kyle proceed to run the line between Llano county and Gillespie county on the 22nd, day of August A. D. 1887, in accordance with an order entered at a former term of this court.

November, 16th, A. D. 1887.

Matter of report, of Wm, Kyle,
Special Surveyor, to establish
boundary line between Llano &
Blanco, & Llano & Gillespie counties. }

On this, the 16th, day of November, 1887, came on to be heard the report of Wm, Kyle, special surveyor, appointed by this court, to run and establish according to law, the boundary line between Llano and Blanco, and Llano and Gillespie counties, and the same having been examined and fully considered, by the court, and said report appearing to be in all things correct. It is ordered by the court that the same be, and is hereby approved, and that said line be adopted as the South boundary line of Llano county, and it is further ordered by the court that said report be recorded on the minutes of this court.

REPORT AND FIELD NOTES.

The State of Texas, }
County of Llano. }

To the Honorable Commissioners
court, Llano, Texas.

Having been appointed by your Honorable court at its June term, 1887, to meet the surveyor or commissioner of Blanco county, and the surveyor of Gillespie county, for the purpose of running and establishing the boundary between Llano, Blanco and Gillespie, counties. I have the honor to submit the following report and field notes of said line, 1st, between Llano and Blanco counties, by agreement I met Capt, P. F. Appell county surveyor of Blanco county at the mouth of Sandy creek, in Llano county, on the 22nd, of August 1887, the corner ~~ON~~ of Llano and Blanco county, described as follows to wit: a point Five miles south of the mouth of sandy creek. not being correctly established and accepted by the two counties, we commenced our labors by establishing this corner using for measuring a one hundred feet Gurley steel tape. running south from the mouth of Sandy creek 26.400 feet-9500 varas-5 miles, made a stone mound on North bank of Pecan creek, this being too close to the creek, and in danger of being washed away made a witness corner 66 feet-233 varas north of this corner on bank of Pecan creek by erecting a stone mound 2 feet high, whence a P. O. 11 inches in dia, brs, N. 77 E. 38 feet dist, a do, 14 inches in dia, brs, N. 42. E. 54 feet & 3 inches dist, both bearing trees marked $\frac{L}{B}$.

both surveyors adopted the beginning point mouth of

Sandy creek, established by measuring from the North to the south bank of said creek at the mouth or entrance into the Colorado river, the distance from bank to bank was found 464 feet-167.2 varas: the center at 232 feet-83.6 vrs, was taken as point of departure, from this point a Hackberry tree 18 inches in diam, stands on the North bank of Sandy due north 237 feet-103.6 varas dist, and a Pecan tree 51 inches in diam, brs, N. 5 E. 63 vrs, dist, from the Hackberry tree first described, both the trees marked \times a cross and a hack above and below the cross. Having established now this corner five miles south of the mouth of Sandy creek, and having run a random line from this point to the S. E. corner of Llano county established by T. J. Chamberlain, county surveyor of Burnet county and myself in the month of June A. D. 1836, and having thereby ascertained the true line between these two points to be N. 71° 31' west. we proceeded to run, mark and establish the boundary line between the counties of Llano and Blanco. both surveyors agreeing thereto. of which line the following field notes and plat are a true and correct representation to wit:

Beginning at the S. E. cor, of Llano county as already established by survey of Llano and Burnet county line date above refered to at a stone mound 5 miles south of mouth of slick rock creek, whence a L. O. brs, S. 63° 15' W. 50 vrs, dist, a do, brs, S. 65 W. 75 vrs, dist, Thence N. 71° 30' West 20.307 feet-3 miles 1609 3-4 vrs, at 2579 feet-929.5 vrs, crossed west line of J. H. Darlin survey North of S. W. cor, 1516 vrs, at 5280 feet-1900 vrs, 1 mile, erected a st, md, 2 feet high, whence a L. O. 14 in dia, brs, N. 17 W. 5 feet dist, a do close to mound brs, North. both bearing trees are marked L. B. at 1 mile 3700 feet-133.3 vrs, center of slick rock. at 1 mile 4805 feet-1731.5 vrs, crossed west line of Nicholas mendez survey No, 3. 671 vrs, south of N. E. cor, of sur, No, 57 for T. A. Gibson, at 2 miles erected a st, md, 2 feet high, whence a P. O. 14 in dia, mkd, B brs, S. close to mound a P. O. 12 in dia mkd, L. brs, N. 19° 30' E. 8 feet dist, at 2 miles 1246 1-2 vrs, crossed west line of survey No, 57, 226 vrs, south of N. W. cor, of survey No, 57. at 2 miles 3954 feet-1424 3-4 vrs, 179 varas south of S. E. cor, of Slator survey, at 3 miles erected stone mound 2 feet high, whence a L. O. 36 inches in diam, mkd, L. brs, S. 82 E. 29 1-2 vrs, dist, a P. O. 30 in diam, brs, S. 35° 30' E. 52 vrs, mkd, B. at 3 miles 235 feet-84 3-4 vrs, crossed south boundary line of J. A. Slator survey. at 3 miles 517 vrs, 131 vrs, north of S. W. cor, of J. A. Slator survey crossed west line of J. A. Slator and E. line of E. Eberling survey at this point. at 3 miles 3560 feet-1282.9 vrs, crossed west line of E. Eberling survey, do, east boundary line of C. M. Gallager survey No, 98. 375 vrs, north of S. W. cor, of E. Eberling survey. at 3 miles 4430 feet-1594.4 vrs, pecan creek, at 3 miles 4467 feet-1609 3-4 vrs, stone mound 5 miles south from mouth of Sandy creek. from this mound a witness

corner 66 ft, due north is erected 2 ft, high, whence a P.O. eleven inches in dia, brs, N. 77 E. 38 feet dist, a do, 14 inches in dia, brs, N. 42 E. 54 ft, & 3 in dist, both marked $\frac{1}{2}$. Thence West at 5280 feet, 1875 varas ravine, at 5280 feet-1900 vrs, 1 mile erected stone mound 2 feet high, whence a P.O. mkd, L. brs, N. 65° 30' W. 14 feet dist, a black jack mkd, B. brs, S. 20 W. 13 feet dist, at 1 mile, 2428 feet-875 vrs, crossed west boundary line of sur, No, 98. made for Charles M. Gallagher, 360 vrs, north from S. E. cor, of sur, No, 88. made for L. Larrimore and 696 vrs, north from S. W. cor, of C. M. Gallagher survey No, 98. at 1 mile 1478 vrs, crossed west line of Larrimore sur, 360 vrs, north from S. W. cor, of said Larrimore sur, at 1 mile 5250--1839.2 vrs, a branch course S. W. at 2 miles erected stone mound 2 feet high on west bank of branch whence a L.O. 10 inches in dia, mkd, B. brs, S. 1 E. 5 feet dist, a L.O. 10 in dia, mkd, L. brs, N. 61 E. 8 1-2 feet dist, at 2 miles 3832 feet-1380.9 varas, crosses west boundary line of Harrington sur, No, 82. 510 vrs, south of N. W. cor, of said J. W. Harrington sur, No, 82 do, N. E. cor, of Z. Taylor sur, No, 151. at 3 miles, at 3 miles set a mes quite post 3 feet high in center of stone mound whence a mesquite tree 36 inches in dia, mkd, B. L. brs, S. 24 W. 36 ft, dist, at 3 miles 925 ft, 333.3 vrs, crossed walnut creek at 3 miles 1800 feet-648 vrs, steep bluff. at 3 miles 1868 feet-673.1 varas crossed walnut creek, at 3 miles 825 varas west boundary line of Z. Taylor sur crossed 510 vrs, south of N. W. corner of said sur, at 4 miles a twin P.O. for cor, a stone mound 2 feet high surrounding it. the easterly P.O. is mkd, L. on north side, westerly P.O. is mkd, B. on south side. from this twin Oak a P.O. mkd, L. brs, N. 61° 30' E. 12 feet dist, an other P.O. mkd, B. brs, S. 27 W. 23 ft, dist, at 4 miles 235 feet-84.7 vrs, crossed fence running north from S. W. cor, of sur, made for Chas, P. Haynes, do, N. W. cor, of sur, made for --Bates, 147 vrs, north of N. E. cor, made for sur, No, 2 Indianola R. R. co, (state sec)) at 4 miles 4310 feet-1553 vrs, 147 vrs, north of N. W. corner of survey No, 2. and N. E. cor, of No, 1. Indianola R. R. Co, at 5 miles 5 feet erected stone mound 2 feet high, 5 miles corner falling into the Fredericksburg & Burnet road, erected as before stated, stone mound 5 feet west of it, on west side of said road, from this mound a mesquite brs, N. 35 E. 55 feet dist, a group of Live Oaks 5 inches in dia, One of which is mkd, L. brs, N. 56 E. 61 1-2 feet dist, at 5 miles 850 feet-306.3 vrs, crossed marrow hollow, at 5 miles 2331 feet-840 vrs, crossed east line of survey No, 153, made for Jilson Morton 1803, vrs, south of N. E. cor, of said sur, and 147 varas north of N. W. cor, of sur, No, 1 made for Indianola R. R. Co, at 6 miles erected stone mound 2 feet high, whence a L.O. 13 inches in dia, brs, S. 45 E. 123 $\frac{1}{2}$ feet dist, mkd, B. a do, mkd, L. 24 inches in dia, brs, N. 40 E. 91 1-2 feet dist, at 6 miles 4400 feet 1585.6 vrs Pots Creek. at 6 miles 4800 feet-1729.7 vrs, a ravine at 6 miles 5050 feet-1819.8 vrs, crossed west bound-

ary line of Jilson Morton sur, No, 153. 1803 vrs, south of N.W. cor, and 1192 vrs, north of S.W. cor, of this sur east and west line excessive 105 vrs, at 7 miles erected stone mound 2 ft, high whence P.O. mkd, B. 30 in diam, brs, S. 34 E. 93 feet dist, another P.O. 24 inches in diam, mkd, L. brs, N. 17 W. 102 feet dist, at 7 miles 1000 feet-360.4 vrs, mkd, a large granite boulder B.L. county line running between the letters L. and B. H. Crownovers house brs, S. 42 E. from this point. at 8 miles erected stone mound 2 feet high, whence a L.O. mkd, L. B. brs, S. 2^o 30' E. 141 feet dist, a double L.O. mkd, L. B. brs, S. 23 E. 175 feet dist, at 8 miles 250 feet-90.1 vrs, a branch, at 8 miles 1030 feet-371.2 vrs, a branch, at 8 miles 2109 feet-760 vrs, crossed west line of W.P. Patterson survey No, 162. 1180 vrs, south of N.W. cor, at 8 miles 4600 feet-1657.6 vrs, Commanche creek, at 9 miles erected stone mound 2 feet high, whence a L.O. 13 inches in dia, brs, S. 0^o 15' E. 95 1-2 feet dist, mkd, B. L. at 10 miles erected stone mound 2 feet high whence a forked L.O. 30 inches in diam, brs, S. 11 W. 187 1-2 feet, mkd, L. B. at 10 miles 5166 feet-1859 vrs, west from corner made 5 miles south from mouth of Sandy creek made stone mound 2 feet high for north west cor, of Blanco county, from this mound a post oak 10 inches in dia, brs, S. 48 1-2 W. 9 3-4 vrs, dist, a L.O. 12 in dia, brs, N. 39 3-4 E. 57 1-2 vrs, both mkd, B. this corner is 800 vrs, east from center of Cold creek, S.W. cor, of B. H. Reed survey No, 185. brs, N. 84 W. 1839, vrs, from it, bearing trees mkd, B. south of line, L. N. of line, L. B. when only one suitable tree was found. stone mounds 2 feet high, marked L. B. engraved and figures denoting the number of miles from the beginning corner.

Survey completed September, 2nd, 1837, Variation 9^o 52' East, the same as used in running Llano and Burnet and Blanco county line in Oct, 1836. Line trees mkd, with a blaze and a hack above and below the blaze. sight trees or fore and aft, size permitting are marked B. and L. on opposite sides or blazed when too small to mark the letters.

Chain carriers, Joseph Bird Jr, Richard Collins of Blanco county, F. H. Anderson W. M. Gray of Llano county.

Respectfully submitted,

Llano September A. D. 1837.

Wm, Kyle,
County Surveyor, Llano County.

I P. F. Appell, County surveyor of Blanco county, hereby certify that the foregoing report with the field notes and plat contained therein is correct.

P. F. Appell.
County Surveyor Blanco County.

It may be necessary to add an explanation to the field notes of the boundary line between the counties of Llano and Blanco field notes and plat show

that the distance between east boundary line of C.M. Gallagher survey No, 39 and west boundary line of survey No, 188, J. J. Lackey found by measurment on the ground to -- 18956, vrs, corresponds well with the sum of distance of surveys on line between the points above mentioned, first Gallagher 2888 vrs, Larrimore No, 87 & 88-1277, vrs, No, 149 & 150-3800 vrs, Holiday 2688 No, 153-2888 vrs, No, 162-2688, No, 188-2688-18917 vrs, Gallagher 2888 vrs, Larrimore No, 88-603, Harrington 1704, Taylor 1344 Haynes 1190, Crownover 1000, I, R. R. co, 1900 vrs, No, 153 2888, No, 162-2688 & 188-2888. - 18393 vrs, diference 24 vrs, the difference therefore in 10 miles between field notes and distance found by actual measurment is only 39 vrs, a discrepancy is found on line between Z. Taylor survey No, 151 and Jilson Morton survey No, 153 lines and fences of C. P. Haynes survey and survey No, 2 made for Indianola R. R. Co, State sec, meets Crownover survey found on map has disappeared on the ground. If the Jilson Morton survey No, 153 N.W. and S.W. corners are found a wire fence connecting both corners are measured distance and found line 2995 vrs, in place of 2888 varas, 107, vrs, in excess. position of Quirk survey does not agree with map, a corner is found 325 vrs, south of county line which was supposed to be the S. E. cor, of Lackey survey and fences run to and from it, following the line running west from this corner it is found to run northward 65 vrs, and the supposed S.W. corner of J. Lackey survey is 65 vrs, north of the S. E. corner and 260 vrs, south of county line only 200 vrs west and 90 vrs, N.W. from this corner a corner is made for the Rexin Mercer survey No, 194, south of county line and fences run to and from it. It is evident that the original and correct corners of the quirk survey No, 189, and the J. Lackey survey No, 188 have disappeared, and the corners substituted are placed in a wrong position from the field notes of the quirk, Lackey and Quirk survey it appears that these corners are north of county line as represented in plat, the S.W. cor, of the B. H. Reed survey No, 185 is found north of county line, the corner made for N.W. cor, of Blanco county bearing S. 84 E. from it, 1889 vrs, dist, the distance between the S.W. corner of the B. H. Reed survey and west line of J. Lackey survey No, 188 is found on the ground greatly in excess of field notes, length of south line of Reed survey 3088 vrs, distance found on the ground 4102 vrs, - 1014 vrs, in excess,

Wm, Kyle, Co, Surveyor Llano County.
P. F. Appell, Co, Surveyor Blanco Co,

2nd, I furthermore beg to submit to your Honorable body, a statement and continuance of my field notes and survey between this, Llano and Gillespie county, I notified Aug, Schuchard, the county surveyor of Gillespie county, that we, the surveyors of Blanco and Llano counties, had been appointed to survey and mark the boundary line between said counties, and the line between this Llano and Gillespie county, which was agreed upon by the surveyor of Blanco county and myself to wit: 22nd, day of August 1837, He, Aug, Schuchard did not make his appearance on said day, but met us on our arrival at the north west corner of Blanco county, which is the north east corner of Gillespie, He, Aug, Schuchard handed me the order of the commissioners court of Gillespie county, which stated, "Provided that we struck a line running from west to east formerly made by Keuchler, to join in the survey, if not, to return home" I informed him that I would continue my survey, and he did not enter any protest, the line first spoken of, stands 380 vrs, north of the line I now submit.

At 41 varas west of the North west cor, of Blanco county stands 11 mile post, erected a stone mound 2 feet high, from which a P.O. 10 in dia, brs, N. 82° 30' W. 1-2 vrs, a do, 11 in dia, brs, N. 43 E. 2 1-5 vrs, each mkd, L. at 300 vrs, center of Cold creek, course N. 37 E. At 1839 vrs, intersect east bdy, line of the Otterside survey 193 vrs, south from the south west corner of the B. H. Reed survey No, 185, At 3759 vrs, stands the 12 mile post. said cor, is 11 vrs, west of said east line (Otterside sur) erected a stone mound 2 feet high from which three large L.O. in a group, one of them marked L. brs, N. 76 W. 13 1-2 vrs, At 12 miles 1839, cross west line of the Otterside survey, 950 vrs north of its south west cor, at 5689, stands 13 mile post on east slope of Cedar mountain, erected a stone mound 2 ft, high, from which a Cedar tree mkd, L. brs, N. 75° 30' E. 7 vrs, At 13 miles 1513 vrs, cross west line of the Dunman survey, 950 vrs, North of its S.W. cor, At 7229 vrs, stand 14 mile post on the top of Cedar mountain, erected a stone mound 2 feet high, from which a Cedar 12 in dia, brs, N. 35 W. 7 vrs, a do. 16 in dia, brs, N. 67 W. 7 vrs, At 14 miles 1128 vrs, cross east line of the Wooton preemption survey At 672 vrs, cross west line of said Wootans survey, which is also the east line of the Montgomery Baxter survey No, 498. 1413 vrs, north of its S.E. corner. At 9029 vrs, stands 15 mile post, erected a stone mound 2 feet high, from which a P.O. 15 in dia, brs, S. 46 E. 53 vrs, At 15 miles 1900 vrs, stands 16 mile post, 10929 vrs, erected a stone mound 2 feet high, from which a L.O. 24 in dia, brs, N. 63° 30' W. 142 vrs, At 16 miles 390 vrs cross west line of the Montgomery Baxter survey, At 1102 vrs, center Legion creek. At 12421 stands 17

mile post erected a stone mound 2 feet high, from which a P.O. 10 in dia, brs, S. 57 E. 10 3-5 vrs, At 1200 vrs, cross the Fredericksburg road. At 15321 vrs, stands the 18 mile post, erected a stone mound 2 feet high, mrkd, L. 18. from which a large granite boulder 10 feet high mkd, L. brs, N. 75 E. 33 vrs, At 18 miles 1900 vrs, At 17221 vrs, stands the 19 mile post erected a stone mound 2 feet high, from which three black jacks in a group, one of them mkd, L. brs, S. 24 W. 1 1-2 vrs, At 19 miles 760 vrs, cross a pasture fence. At 1820 vrs, cross east line of Garoia survey No, 477. 961 vrs north of its S.E. cor, At 19041 vrs, stands the 20 mile post. said cor, is 30 vrs, west of said east line a large stone mkd, L. 20 for station, At 20 miles 764 vrs, center of Crabapple creek. At 20 miles 1900 vrs, At 20941 vrs, stands the 21 mile post erected a stone mound 2 feet, from which a P.O. 14 in dia, brs, N. 15 E. 19 1-2 vrs, At 21 miles 1820 vrs, cross west line of Garoia survey No, 477. At 21 miles 1900 vrs, At XX 22341 vrs, stands 22 mile post erected a stone mound 2 feet high from which two mesquites each mark L. brs N. 29° 30' E. 6 1-5 vrs, said corner stand 420 vrs, west of the east line of Martinez survey No, 475, and 961 vrs, north from the south line of said survey. At 22 miles 850 vrs, cross west prong of Crabapple creek. At 22 miles 1900 vrs, At 24741 vrs, stands the 23 mile post erected a stone mound 2 feet high, from which a L.O. 24 in dia, brs, N. 37 W. 17 1-5 vrs, At 23 miles 1868 vrs, cross west line of the Martinez survey No, 475, At 23 miles 1900 vrs, At 26641 vrs, stands the 24 mile post, said cor, stands 420 vrs, west of the N.W. cor, of the J.V. Massey and in the north line of said survey, and on the east bank of Sandy creek, erected a stone mound 2 feet high, from which a pacan tree brs, S. 16 W. 12 1-5 vrs, a forked Hickory brs, S. 17 E. 16 vrs, each mrkd, L. At 24 miles 22 vrs, center of Sandy creek. At 300 vrs, the summit of the Enchanted rock, a little on the west slope of said rock. At 24 miles 1900 vrs, At 28541 vrs, stand the 25 mile post erected a stone mound 2 feet high, from which a P.O. 8 in dia, brs, S. 9 W. 10 1-2 vrs, At 25 miles 1900 vrs, At 30441 vrs, stands the 26 mile post, erected a stone mound 2 feet high, from which a Black jack 3 in dia, brs, S. 26 W. 21 1-2 vrs, At 26 miles 1900 vrs, At XX 32341 vrs, stands the 27 mile post, erected a stone mound 2 feet high, from which a P.O. 8 in dia, brs, N. 51° 30' E. 3 2-5 vrs, At 27 miles 1520 vrs, cross west line of Henery Keese' pasture. At 27 miles 1900 vrs. At 34241 vrs, stands the 28 mile post. said corner stands in survey No, 380 R.W. & Co. survey, and passes through No, 379 by same certificate (100 vrs) 100 vrs north of the south line of said surveys Nos, 379 & 380 erected a stone mound, 2 feet high, from which two Hickorys each mrkd, L. brs, N. 6° 30' W. 4 1-5 vrs, At 28 miles 1900 vrs, At 36141 vrs, stands the 29 mile post erected a stone from which a P.O. 10 in dia, brs, due

east, marked on the east and on the west side with the letter L. 41 I-2 vrs, distant. At 29 miles 1900 vrs, At 38041 vrs, stands the 30 mile post 100 vrs, north and said cor, stands 100 vrs, north and 150 vrs, west of the north west corner of Beaty, Seal & Forward survey No, 5. and about 100 vrs, S. 10 W. from a stone building formerly owned by Dearing. erected a stone mound 2 feet high, from which a P.O. 10 in dia, brs, due east 3 I-2 vrs, At 30 miles 1194 vrs, cross east line of Beaty, Seal & Forward No, 6. (state) At 30 miles 1900 vrs. At 39941 vrs, stands the 31 mile post, 706 vrs, east and 100 vrs, north of the south west corner of said Beaty, Seal & Forward survey No, 6. erected a stone mound, 2 feet high, from which a forked elm, 10 in dia, brs, S. 25 E. 33 vrs, At 31 miles 706 vrs, cross west line of Beaty, Seal & Forward survey No, 6. At 384 vrs, cross east line of D. Rode's pasture fence. At 31 miles 1900 vrs, At 41841 vrs, stands the 32 mile post, erected a stone mound 2 feet high, from which a mesquite 14 in dia, brs, N. 53 W. 2 vrs, At 32 miles 460 vrs, cross the west line of Beaty, Seal & Forward No, 3, which is also the east line of Garcia survey No, 622. At 1450 vrs, cross the west line of said Garcia survey No, 622, and the east line of the L. Wilkerson survey No, 131. At 32 miles 1900 vrs, stands the 33 mile post, said corner stands on the East bank of Cherry spring branch, and 765 feet, 272 I-10 vrs, south of a corner formerly established by Knight Stith, of Llano county, and - - Stapleton, of Mason county. and is 250 vrs, west of the east line of the L. Wilkerson survey No, 131, which is set as the South west corner of Llano county, by erecting a stone mound, 2 feet high, with the letter L. cut in a large stone slab standing in the center of said mound, from which a forked pecan tree 24 in dia, each marked L. brs, N. 48 E. 7 3-5 varas.

Note,

Bearing trees marked L. on the North and south of the line, all large trees are marked also, with the letter L. all of the stone mounds are 2 feet high, marked L. engraved and figures denoting the number of miles from the beginning corner, survey completed September 12th, 1837. Variation, $9^{\circ} 52'$ East. the same as used in running Llano, Burnet and Blanco county line in October 1836. Line trees marked blaze (1) and a hack above and below. Sight trees, or fore and aft trees size permitting are marked L. on opposite sides, or blazed when too small to mark the letter L.

Chain Carriers,

} Joseph Bird,
W. M. Gray,

Respectfully Submitted,
Llano, September, 15th, 1837.

Wm, Kyle,
County Surveyor, Llano County.

State of Texas, } I Wm, Kyle, County Surveyor, of
Llano County. } Llano county, certify, that the
within report of the survey with the field notes,
Beginning on the 22nd, day of August, and completed on
15th, day of September, A. D. 1887, are correct.

Wm, Kyle,
County Surveyor, Llano County.

Examined and approved, in open court, this, November,
16th, 1887.

E. C. Bonham,
County Judge, Llano County.

Filed, October, 14th, 1887.
Recorded, November, 28th, 1887.

M. M. Hargis, Clerk,
County Court, Llano County.

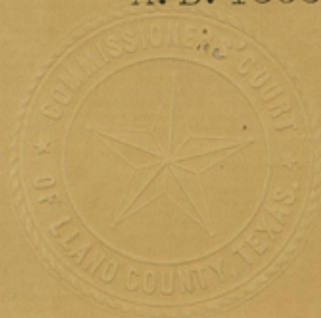
THE STATE OF TEXAS,)

COUNTY OF LLANO.)

I M. M. Hargis, Clerk of the County court, of Llano county, do hereby certify that the above and foregoing is a true and correct copy of an order of the commissioners court of Llano county, appointing Wm, Kyle, surveyor of Llano county, to represent said county in running and establishing the boundary line between Llano and Blanco, and Llano and Gillespie counties. And the order of said court approving the report of said surveyor, together with said surveyors report, Field Notes, and map of said line, as the same appears of record in my office, in the minutes of said commissioners court.

Given under my hand, and seal of said court, at office in Llano, this the 19th, day of January, A. D. 1883.

M. M. Hargis. Clerk,
County Court, Llano County, Texas.



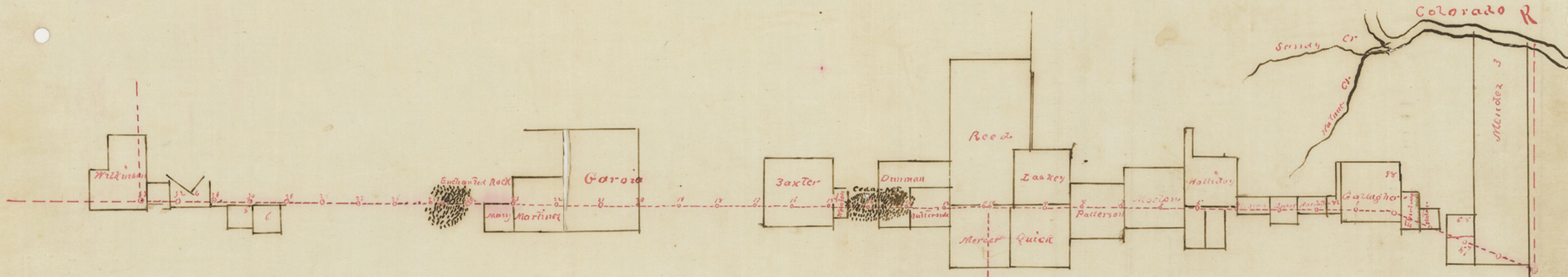
Llano Co. Survey
Boundary line between

Llano
and the Counties of
Blanco & Gillespie

Filed June 18/89

abstract corrected
May 24th/89

Beaman



Gillespie Co

Blanco Co

Handwritten note at the bottom left, possibly a signature or date.