

at 4 mi., a P.O. 12 in.in dia. brs. N.10 1/2 W. 17 1/2 vs. : at 4 mi., 320 vs. pass 143 vs. W. of the S.W. cor. of State section 10; at 4 mi. 645 vs. the N. line of said Sur. No.28, 143 vs. W. of the N.E. cor. and 455 vs. E. of the N.W. cor. of the same; at 4 mi. 742 vs. a Branch; at 4 mi. 1805 vs. a Branch; at 5 mi. a Stone Mound; at 5 mi., 130 vs. a Branch; at 5 mi., 369 vs. the S. line of the David Sileriggs Sur. No. 24, 2102 vs. W. of the S.E. cor. of the same; 143 vs. W. of the N.E. cor. of the Comitillo Colony ditch Co. Sur. and 868 vs. E. of the N.W. cor. of the same, being the N.E. cor. of the James Osburn Sur. No.115; at 6 mi. a P.O. 14 in.in dia. brs. N.24 1/2 E. 24 9/10 vs. do. 26 in.in dia. brs. S.39 W.36 6/10 vs.; at 6 mi. 1008 vs. the S. bank, 1044 vs. the N. bank of Cold Spring Branch; at 6 mi. 1548 vs. a Rocky Ridge; at 7 mi. a stone mound of white rocks, whence a natural Stone Mound of white rocks brs. N.41 1/2 E.27 1/2 vs. a L.O. 18 in.in dia. brs. N. 30 1/4 W. 76 vs.; at 8 mi. a Stone Mound on the S. edge of a large flat rock on the N. side of a high hill; at 8 mi. 657 vs. the S. line of the John Begley League and Labor Sur. No. 4,480 vs. E. of the S.W. cor. and 2243 vs. W. of the S.E. cor. of the same; at 9 mi. a L.O. 15 in.in dia. brs. E.1 6/10 vs. a do.12 in.in dia. brs. S.78 1/2 W. 2 2/10 vs.; at 10 mi. a P.O. 14 in.in dia. brs. N.62 E. 12 vs. do. 16 in.in dia. brs. S.20 W. 16 7/10 vs. ; at 11 mi. a P.O. 12 in.in dia. brs. S.19 E. 3 2/10 vs., do. 12 in.in dia. brs. S.56 W. 6 8/10 vs.; at 12 mi. a P.O. 12 in.in dia. brs. N.66 1/2 W. 15 vs., a B.J. 20 in.in dia. brs. N.45 1/2 E. 26 9/10 vs; at 13 mi. a L.O. 18 in.in dia. brs. N.7 W. 15 1/10 vs., do. 18 in.in dia. brs. N.77 W. 18 4/10 vs.; at 14 mi. a P.O. 13 in.in dia. brs. N.32 1/2 E.3 3/10 vs., do. 15 in.in dia. brs. N.71 1/2 W. 24 7/10 vs.; at 14 mi. 252 vs. a Road; at 14 mi., 432 vs. the S. bank, 468 vs. the N.bank of Indian Spring Creek; at 14 mi., 721 vs. a point on the S. bank of the Llano River, whence we ran a connecting line up the river with its meanders; N.78 W.220 vs.; Thence N.58 W.560 vs. the N.W. cor. of the John Begley Sur., From the same point on the S. bank of the River we ran a connecting line down the River, with its meanders; S.76 1/2 E.816 vs. Thence East 1140 vs. Thence N. 72 1/2 E. 79 vs. the N.E. cor. of said Begley Survey; at 14 mi. 775 vs. the S. edge of the water in the Llano River; at 14 mi. 995 vs. the N. edge of the same; at 14 mi. 1017 vs. a point on the N. bank of said River whence the S.E. cor. of the A.Leifeste Sur. No.716 brs. S.70 1/2 E.54 vs. the S.W. cor. of said Sur. brs. N.70 1/2 W.426 vs.; at 14 mi. 1044 vs. the Llano and Mason Road; at 15 mi. a L.O. 30 in.in dia. brs. N.18 E. 36 vs.; at 15 mi. 468 vs. the S. bank, 504 vs. the N. bank of Sandy Creek; at 15 mi. 576 vs. cross two large rocks, the N. one mkd. on E. side L C ; at 15 mi. 720 vs. the N. line of said No.716 275 vs. W. of the N.E. cor. and 397 vs. E. of the N.W. cor. of the same; at 15 mi. 1320 vs. the N. line of the Carl Richter Sur. No.715, 315 vs. W. of the N.E. cor. and 396 vs. E. of the N.W. cor. of the same; at 15 mi. 1620 vs. pass 393 vs. W. of the N.W. cor. of the A.Leifeste Sur. No. 712 and 315 vs. W. of the N.W. cor. of the H.Honig Sur. No.713; at 16 mi. a L.O. 14 in.in dia. brs. S.14 W. 38 vs.; at 16 mi. 940 vs. the N. line of the Christian Wiedeman Sur. 1014 vs. W. of the N.E. cor. and 392 vs. E. of the N.W. cor. of the same; at 16 mi., 1123 vs. a Branch ; at 16 mi. 1351 vs. the S. line of Johan Alsenz Sur. No.255, 35 vs. W. of the S.E. cor. and 975 vs. E. of the S.W. cor. of the same, and 1015 vs. W. of the S.E. cor. of the Peter Hundhausen Sur. No.256; at 17 mi. a stone mound; at 17 mi., 36 vs. a Branch ; at 17 mi. 438 vs. the N. line of said Sur. No.255, 42 vs. W. of the N.E. cor. and 955 vs. E. of the N.W. cor. of the same; at 17 mi. 563 vs. a branch; at 17 mi. 1435 vs. the N. line of the Johan Alsenz Sur. No.258, 49 vs. W. of the N.E. cor. and 936 vs. E. of the N.W. cor. of the same and 1029 vs. W. of the S.E. cor. of the T. & N.O.R.R. Co. Sur. No.29; at 18 mi. a China Stake brs. East 18 yards from which stake a P.O. 14 in.in dia. brs. N.1 1/2 E.21 3/10 vs. do. 14 in.in dia. brs. S.75 W. 1 3/10 vs.; at 18 mi. 270 vs. a Branch ; at 18 mi. 1523 vs. the N. line of said Sur. No. 29, 1042 vs. W. of the N.E. cor. and 950 vs. E. of the N.W. cor. of the same; at 19 mi. a B.J. 14 in.in dia. brs. N.14 E. 16 4/10

vs., a P.O. 14 in. in dia. brs. N. 5 1/2 W. 22 7/10 vs.; at 19 mi. 666 vs. the S. bank and 684 vs. the N. bank of Elm Creek; at 19 mi., 617 vs. the N. line of the Stephen Dahl Sur. No. 259, 1064 vs. W. of the N.E. cor. and 927 vs. E. of the N.W. cor. of the same; at 19 mi. 900 vs. the foot of a Rocky hill; at 19 mi. 1633 vs. the N. line of the Stephen Dahl Sur. No. 260, 1086 vs. W. of the N.E. cor. and 904 vs. E. of the N.W. cor. of the same; at 20 mi. a clump of three Black Jacks bears N. 37 W. 16 6/10 vs. a ledge of Rocks brs. N. 20 1/2 E. 42 1/2 vs.; at 20 mi., 1664 vs. the N. line of T. & N. O. R. R. Co. Sur. No. 25, as marked, 1083 vs. N. 87 3/4 W. of the N.E. cor. of the same and 909 vs. S. 87 3/4 E. of the N.W. cor.; at 21 mi. a P.O. 14 in. in dia. brs. S. 67 1/2 E. 16 6/10 vs. do. 8 in. in dia. brs. S. 55 W. 21 1/2 vs.; at 21 mi. 828 vs. the top of a ridge; at 21 mi. 1618 vs. the N. line of the Theodore Noelke Sur. No. 261, 1078 vs. N. 87 1/2 W. of the N.E. cor. and 914 vs. S. 87 1/2 E. of the N.W. cor. of the same; at 21 mi., 1623 vs. pass 19 vs. West of the S.E. cor. of the J.W. Echols Sur. No. 12, at 22 mi., a P.O. 11 in. in dia. brs. N. 3 1/4 E. 11 2/10 vs.; do. 14 in. in dia. brs. S. 4 1/2 W. 17 1/2 vs.; at 22 mi. 214 vs. the N. line of said Echols survey, 16 vs. S. 88 W. of the N.E. cor. and 955 vs. N. 88 E. of the N.W. cor. of the same; at 22 mi. 702 vs. the N. line of the D.F. Owen Sur. No. 11, 16 vs. S. 88 W. of the N.E. cor. and 947 vs. N. 88 E. of the N.W. cor. of the same, 268 vs. W. of the E. line of T.C. Ry. Co. Sur. No. 1, and 1392 vs. E. of the W. line of the same; at 23 mi. a large rock brs. S. 40 W. 13 3/10 vs., a large boulder brs. S. 83 1/2 E. 57 2/10 vs.; at 23 mi., 734 vs. the N. line of said Sur. No. 1, 272 vs. W. of the N.E. cor. and 1388 vs. E. of the N.W. cor. of the same, 669 vs. E. of the N.W. cor. of the old F. Richter Sur. No. 2, now forfeited and 709 vs. E. of the S.W. cor. of the T.H. Miller E. half of section 12; at 23 mi. 1296 vs. the top of Turkey Roost Mountain; at 24 mi. a P.O. 15 in. in dia. brs. S. 72 1/2 W. 6 8/10 vs., do. brs. N. 10 E. 24 1/2 vs. at 24 mi., 560 vs. the N. line of said T.H. Miller Sur. 270 vs. W. of the N.E. cor. of the same and 669 vs. E. of the S.W. cor. of the Ulrich Maelsch Sur. No. 6; 25 mi. Station in Beadle's field; at 25 mi. 694 vs. the N. line of said Sur. No. 6, 299 vs. W. of the N.E. cor. and 722 vs. E. of the N.W. cor. of the same 704 vs. E. of the W. line of the Thos. Berry Sur. 25 mi., 1440 vs. the S. bank, 1512 vs. the N. bank of San Fernando Creek; 25 mi. 1664 vs. the N. line of said Thos. Berry Sur. 299 vs. W. of the N.E. cor. and 714 vs. E. of the N.W. cor. of the same; 26 mi. on large natural stone mound; 26 mi. 607 vs. the N. line of the Geo. Hendrix Sur. 291 vs. W. of the N.E. cor. and 729 vs. E. of the N.W. cor. of the same, 299 vs. W. of the S.E. cor. and 1749 vs. E. of the S.W. cor. of the G.C. & S.F.R.R. Co. Sur. No. 1, 27 mi. Station in Hibdon's field; at 27 mi. 736 vs. the N. line of said Sur. No. 1, 342 vs. W. of the N.E. cor. and 1707 vs. E. of the N.W. cor. of the same, 679 vs. E. of a cor. of the Charles Johnson Sur., at 27 mi. 1794 vs. the S. line of the Jesse Wallace Sur. No. 721, 393 vs. W. of the S.E. cor. and 625 vs. E. of the S.W. cor. of the same; at 28 mi. a P.O. 14 in. in dia. brs. S. 74 E. 21 1/2 vs. a L.O. 11 in. in dia. brs. S. 66 W. 20 2/10 vs.; at 28 mi. 500 vs. the Llano and Brady City Road; at 28 mi. 841 vs. the N. line of said Wallace Sur. 400 vs. W. of the N.E. cor. and 791 vs. E. of the N.W. cor. of the same, 793 vs. E. of the S.W. cor. of the Wessel Meyer Sur. No. 15; 29 mi. Station in Caviness' orchard; at 29 mi. 708 vs. the N.W. cor. of Llano Co. and N.E. cor. of Mason county as fixed by Stith and Stapleton, a large stone mound, whence a flat rock in a dry Ravine brs. N. 4 E. 18 4/10 vs. a B.J. stump brs. North 29 1/2 vs. a B.J. brs. N. 4 1/4 E. 19 vs., the E. line of said Sur. No. 15 brs. East 375 vs. and the N. line brs. North 222 vs.

Survey completed June 13th. 1894.

Bearing trees (and some of the line trees) on the E. side of the line mkd. L.C., on the W. side of the line, M.C. Some of the mile mounds mkd. M.C. and L.C. with the figures denoting the number of miles from the beginning point. Line trees usually mkd. with blaze and two hacks above and two below. Variation of Co. line for first 8 miles where there seemed to be no local attraction $9^{\circ} 25' E.$

See plat attached.
R.D.Hurley @ chain
G.W.Livingston @ carriers.
This June 18th. 1894.

T.A.Chamberlain, Co. Surveyor, Llano Co., Texas.

I hereby certify, that the above report is correct ; this June 21st.
1894.

J.D.Hurley, Co. Surveyor, Mason Co., Texas.

The State of Texas
County of Llano. X

I, W.T. Swanson, Clerk of the County Court of Llano
County-Texas, do hereby certify that the above and foregoing is a true
and correct copy of the original report of T.A. Chamberlain, Co. Surveyor
of Llano County of the re-survey of the County line between Llano and
Mason Counties as the same appears on file in my office and I further
certify that the plat hereto attached marked "Exhibit A" is a true
and correct copy of the original plat attached to said report as the
same appears on file with said report, ^{and that said Report was approved by the}
Commissioners Court of Llano County on August 13, 1894.
given under my hand and seal of office this the 2nd. day of Feby.
A.D. 1895.



W. T. Swanson

Clerk, County Court, Llano county, Texas.

By *T. Chamberlain* Deputy.

Llano Co Bdry Line 2

Typed Copy of Handwritten
Field Notes

Filed: 7-14-1894

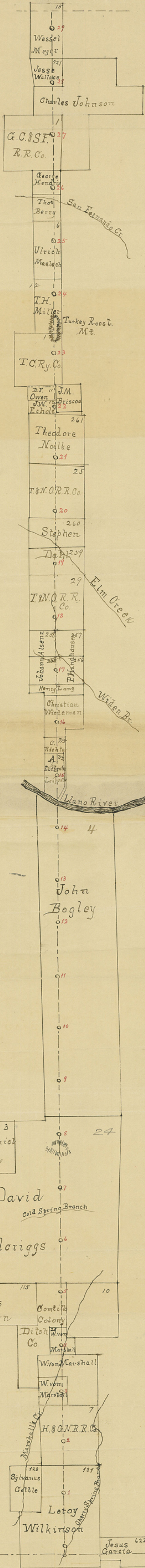
Appr: 7-14-1894



Wm. J. ...

...

"Exhibit A"



Scale 2000 vs. per inch.
T.A. Chamberlain
Co. Sur. Llano Co.