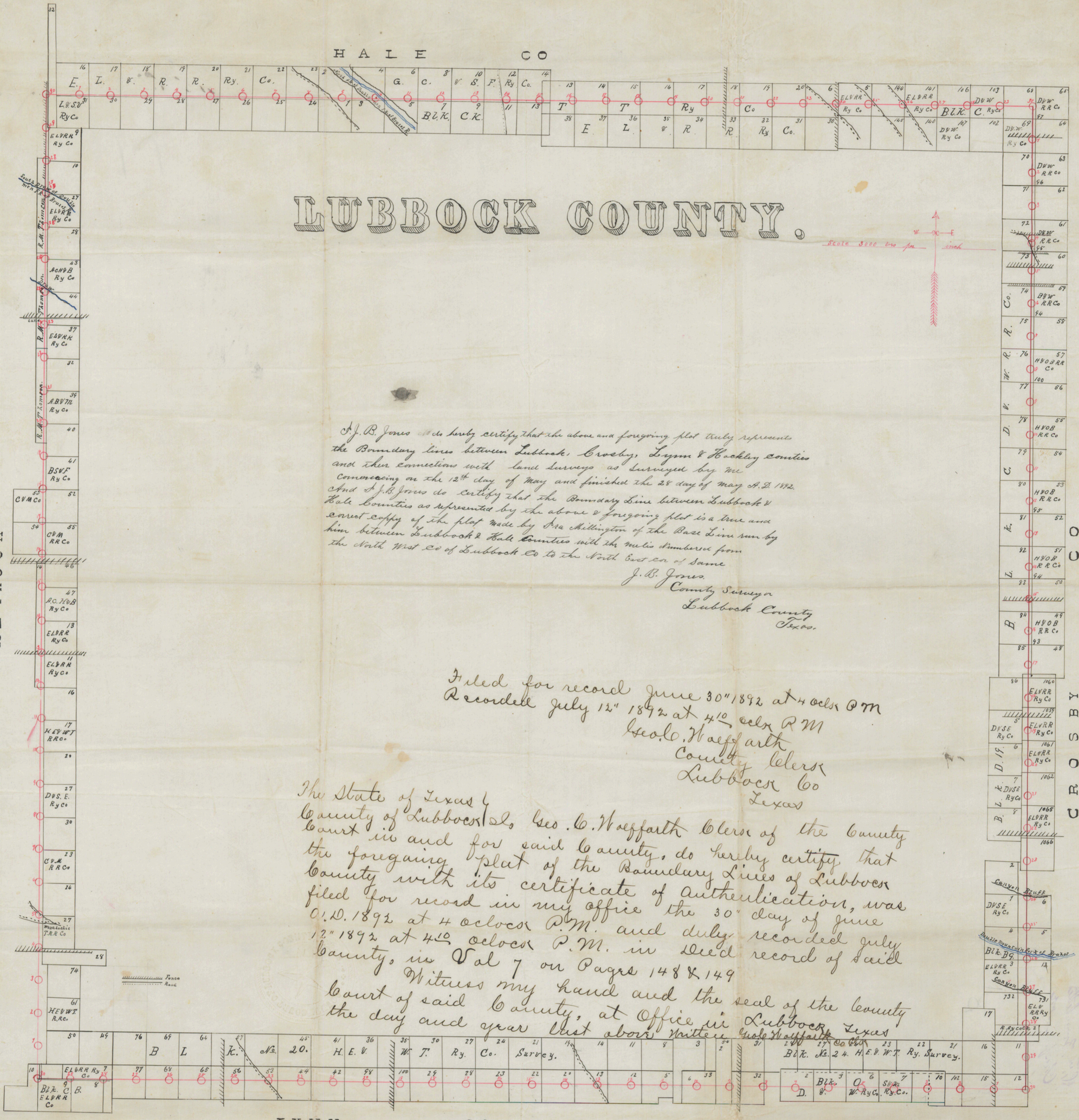


H A L E C O

LUBBOCK COUNTY.

Scale 8000 ft to an inch



J. B. Jones do hereby certify that the above and foregoing plot truly represents the Boundary lines between Lubbock, Crosby, Lynn & Hockley counties and their connections with land surveys as surveyed by me commencing on the 12th day of May and finished the 28 day of May A. D. 1892. And J. B. Jones do certify that the Boundary Line between Lubbock & Hale Counties as represented by the above & foregoing plot is a true and correct copy of the plot made by Geo. Millington of the Base Line run by him between Lubbock & Hale Counties with the miles numbered from the North West cor of Lubbock Co to the North East cor of same

J. B. Jones  
County Surveyor  
Lubbock County  
Texas.

Filed for record June 30<sup>th</sup> 1892 at 4 o'clock P.M.  
Recorded July 12<sup>th</sup> 1892 at 4<sup>10</sup> o'clock P.M.  
Geo. W. Haffarth  
County Clerk  
Lubbock Co  
Texas

The State of Texas,  
County of Lubbock, do, Geo. W. Haffarth Clerk of the County Court in and for said County, do hereby certify that the foregoing plot of the Boundary Lines of Lubbock County with its certificate of authentication, was filed for record in my office the 30<sup>th</sup> day of June A. D. 1892 at 4 o'clock P.M. and duly recorded July 12<sup>th</sup> 1892 at 4<sup>10</sup> o'clock P.M. in deed record of said County, in Vol 7 on Pages 148 & 149

Witness my hand and the seal of the County Court of said County, at Office in Lubbock Texas the day and year last above written.

Geo. W. Haffarth  
County Clerk

L Y N N C O

B

Boundary  
Lubbock Co  
Hale Co