

Resurvey  
Lubbock-Crosby  
Boundary

Filed in General Land Office  
October 10<sup>th</sup> 1921,

J. H. Robison, Comr.  
S. C. Clark, Clerk.

NOTE:-

These Field Notes show to be a retrace of the County line run and established by J. B. Jones in 1892, and filed for the purpose only of showing acreage of surveys in each County cut by said County line, and correcting the Abstracts of such surveys accordingly.

10-20-21  
Clark

P. F. BROWN, County Judge.  
C. A. HOLCOMB, Sheriff & Tax Col.  
SAM T. DAVIS, County Clerk.  
R. C. BURNS, Tax Assessor.  
MARY F. HINTON, Treasurer.  
E. R. HAYNES, County Supt.  
JOHN R. McGEE, County Attorney



30  
M. M. CRAWFORD, Com. Prec. 1.  
H. D. TALLEY, Com. Prec. 2.  
B. H. WHEELER, Com. Prec. 3.  
P. Von ROSENBERG, Com. Prec. 1.  
J. WESLEY SMITH, J. P. Prec. 1.  
A. L. HARRIS, Surveyor.  
LOUIE F. MOORE, Dist. Clerk.

# LUBBOCK COUNTY

LUBBOCK, TEXAS

Oct. 7th, 1921.

Monorable J.T. Robison, Commissioner,  
Austin, Texas.

Dear Sir :-

Under separate cover I am sending to your office field-note book of a Resurvey of the Jones east line of Lubbock County for boundary settlement between Lubbock and Crosby County, which kindly check for possible errors and file for record to correct abstracts for acreage, located within the two Counties.

As soon as received and checked kindly acknowledge with approval for record, as the Commissioners' Courts ask that before they pay me.

Yours very truly,

*A. L. Harris*  
County Surveyor.

RECEIVED

OCT 10 1921

Referred to Map

1975

PINK L. PARRISH  
County Judge, Crosby county  
CROSBYTON, TEXAS

Oct. 17th. 1921.

Hon. J. T. Robison, Land Comm.  
Austin, Texas.

Dear Sir:-

In reply to your letter of Oct. 13th, making inquiry about Crosby County accepting a certain Survey made by A. L. Harris Surveyor of Lubbock on the line between Crosby County and Lubbock County, will say. This Survey as made by Mr. Harris is agreeable with Crosby County.

*Pink L. Parrish*  
County Judge Crosby County, Texas.

RECEIVED

OCT 19 1921

Referred to Map

RECEIVED

OCT 19 1921

*See Copy of  
Judgment filed  
5/13/31 in Lynn  
Co. Boundaries*

*See opinion Supreme Court (Commission Sec A)  
58 (2<sup>d</sup>) Page 24, rendered 3/15/32*

LUBBOCK & CROSBY COUNTY LINE:

On Motion duly seconded and carried by unanimous vote;

It is ordered by the Court that the line between Crosby and Lubbock Counties be ran, and determined by the proper marks etc; That A.L.Harris, County Surveyor of Lubbock County be employed to run said line and that said line be run according to the field notes of a line run by Surveyor Jones as near as possible with the exception of the callings in the Jones line near the S.E. Corner of Lubbock and S.W. Corner of Crosby County, in which callings there is an error in which said line calls for the line to be east of where it should be.

In fact the Surveyor is to begin at the N.E. Conrer of Lubbock County as designated in the Jones field notes in 1892, same being in Survey No. 68 Block C, at a point 185 varas West of the East line of said Survey 68, Block C, and 740 varas North of the South line of said Survey 68, Block C, and to run according to the callings of the Jones field-notes excepting the error mentioned.

Said Surveyor is to receive for his services \$10. per day for the time in making the survey and preparing the field notes but he is to have same approved by the General Land Office before payment is made.

One half of the entire expenses is to be paid by Lubbock County and one half by Crosby County.

The County Judges of the two Counties and the Commissioners' Court of said Counties agree to accept the line when run as the true line between Crosby and Lubbock Counties.

Of Record;- Commissioners' Court Docket Vol. 3 page 58, Lubbock County Texas, Special Term Sept. 2nd, 1921.

(Same Order passed by Commissiones of Crosby County)

FIELD NOTES OF COUNTY BOUNDARY BETWEEN CROSBY AND LUBBOCK COUNTIES

BEGINNING 1st, Mile at S.W. Corner of Floyd County and N.W. Corner of Crosby County, for the N.E. Corner of Lubbock County, and the S.E. corner of Hale County as located by Ira Millington.

The same being a large Rock Planted in ground 12 inches, said rock 20 by 30 inches and 3 inches in diameter marked S.W.F. Co., on North east N.W.C.Co., on S.E. Corner S.E. H. Co., on N.W. N.E. L. Co., on the south west a charred decar stick 2 inches diameter 10 inches long burried in ground on the south of rock and peice of galvanized iron pipe 4 feet long 2 inches diameter planted on N.W. saide of rock, mound of earth thrown around rock pits E. & W N. & S. 2 feet by 2 feet, 12 inches deep.

- 1st. mile. Thence South at 740 varas cross south line of survey No. 68 Block C, D&W RR Co, survey 185 varas west of its south east corner, at 1855 varas wire fence, at 1900.8 varas an earth mound 2 feet high pits north and south 2 feet by 2 feet 12 inches deep.
- 2nd. mile- Thence South at 740 varas cross south line of survey No. 69 Block C. D&W RR Co., survey, 185 varas west of its SE. orner, at 1900.8 varas an earth mound 2 feet high pits north and south east and west 2 feet by 2 feet 12 inches deep.
- 3rd. Mile- Thence South at 740 varas cross the south line of survey 70 Block C. D&W RR Co., survey, 185 varas west of its SE corner, at 1900.8 varas earth mound 2 feet high pits north and south 2 feet by 2 feet 12 inches deep.
- 4th, Mile- Thence South at 740 varas cross the south line of survey No. 71 Block C, D&W RR Co, survey, 185 varas west of its SE corner, at ~~1855~~ 1685 varas wire fence at 1900.8 varas an earth mound 2 feet high pits north and south said md. is on the NW side of a basin;

- 5th. Mile- Thence South passing on the west side of said basin at 740 varas cross south line of survey No. 72 Block C, D&W RR. Ry, Survey, 185 varas west of the SE corner, at 907 varas Bois Darc hedge and peach orchard belonging to A.W. Lewis, at 1200 varas a Russan Mulberry orchard, at 1320 varas pass a clump of locus bushes about 10 feet high, at 1900.8 varas pile of small stones burried in ground and a mound of earth built over them 2 feet high pits north and south 12 inches deep, said mound is in the northern partion of the town of Estacado.
- 6th. Mile- Thence South passing through the church lot which is enclæed with wire fende, at 640 varas pass west of the court houst ruins, at 740 varas cross the south line of survey No. 73, Block C, D&W RR. Co., survey , at 800 varas pass on the west side of a large basin, at 1900.8 varas crossing wire fence an earth mound 2 feet high pits north and south 2 feet by 2 feet 12 inched deep;
- 7th, Mile- Thence South at 740 varas cross the south line of section No. 74 Block C, D&W RR. Co. Survey, 185 varas west of its SE corner made by calculations as no corner was found, at 1535 pass 150 varas west of the SE corner of J.T.Osborns fence which is supposed to be the SE corner of s survey 58 Block C, H&OB Ry., survey as located some years ago, at 1900.8 varas an earth mound 2 feet high, pits north and south 2 feet by 2 feet and 12 inched deep;
- 8th, Mile.- Thence South at 740 varas cross the south line of survey No. 75 Block C, D&W Ry Cos. Survey, and passing on the east of 2 deep basins, at 1900.8 varas mound of earth 2 feet high pits north and south 2x2 feet 12 inches deep, a large deep basin to the NW.
- 9th. Mile- Thence south at 280 varas the top of high ridge at 740 varas cross the south line of survey No. 76, D&W Ry Cos. Survey Block C, at 1900.8 varas an earth mound 2 feet high pits north and south 2x2 feet 12 inches deep.
- 10th, Mile- Thence South at 740 cross the south line of survey No. 77 Block C, D&W Ry Cos survey, 185 varas west of its SE corner, at 1200 varas pass on the east side of basin at 1900.8 varas an earth mound 2 feet high pits north and south 2x2 feet 12 inched deep.
- 11th, Mile- Thence South at 740 varas cross the south line of survey No. 78 Block C, D&W Ry, Cos survey, 185 varas west of its SE corner, basin bears south30 degrees east 100 varas, at 1900.8 varas an earth mound 2 feet high pits north and south 2x2 feet 12 inched deep.
- 12th, Mile- Thence South at 740 varas cross the south line of survey No. 79 Block C, D&W Ry, Cos., Survey, 185 varas west of its SE corner, at 880 varas cross said south line of survey No. 79 as located by H.C.Knight the District Surveyor of Crosby Land District at 1900.8 varas an earth mound 2 feet high, pits north and south 2x2 feet 12 inches deep.
- 13th, Mile- Thence south at 280 varas pass a point 60 varas east of the east edge of basin, at 740 varas cross the south line of survey No. 80 Block C, D&W Ry, Cos Survey, 185 varas west of its south west corner, at 880 varas cross the south line, 176 varas west of its south east corner as located by the said surveyor, at 1900.8 varas an earth mound 2 feet high, pits north and south 2x2 feet 12 inches deep on a smooth prairie.
- 14th, Mile- Thence south at 740 varas cross the south line of survey 81 Block C, D&W Ry, Cos, survey, 185 varas west of its south east corner, by calculation as no corner was found, at 1900.8 varas an earth mound 2 feet high pits north and south 2x2 feet 12 inches deep.
- 15th, Mile- Thence South at 740 varas cross the south line of survey No. 82, Block C, D&W Ry Cos. survey, 185 varas west of its SE corner, at 1900.8 varas an earth mound 2 feet high pits north and south 2 feet x 2 feet 12inches deep-needle reading 10°35'E.
- 16th, Mile- Thence South at 83 varas cross the Lubock& Emma Road and J.K. Milwees pasture fence, at 740 varas cross the south line of survey No.83 Block C. D&W Ry cos, survey, 185 varas west of its SE corner, at 1200 varas pass east of basin at 1900.8 varas an earth mound 2 feet high pits north and south 2x2 feet 12 inches deep, 2 horns buried under the mound.

- 17th, Mile- Thence South at 740 varas cross the south line of survey No. 84 Block C, D&W Ry. Cos. Survey, 185 varas west of its SE corner, at 1900.8 varas an earth mound 2 feet high on a smooth prairie from which a small hill bears  $N66^{\circ}30'E$ , pits north and south 2x2 feet 12 inches deep.
- 18th, Mile- Thence South at 517 varas cross the north line of survey 1060 Block I, EL&RRRR survey, 315 varas east of its NW corner, at 740 cross the south line of survey No.85 Block C, D&W Ry. Cos survey, 185 varas west of its SE corner, at 1900.8 varas an earth mound 2 feet high in a large flat basin several dry ponds to the west, pits north and south 2x2 feet 12 inches deep.
- 19th, Mile- Thence South at 517 varas cross the north line of survey 1059 Block I, EL&RRRR Survey, 315 varas east of its NW corner, at 1080 varas cross the south fence of J.K.Milwees pasture, at 1900.8 varas a flat stone set in ground with several smaller ones around it and a mound of earth built over them 2 feet high pits north and south 2x2 feet 12 inches deep.
- 20th, Mile- Thence South at 517 varas cross the north line of survey 1061 Block I, EL&RRRR survey, 315 varas east of its NW corner, at 1900.8 varas a stone 2x16x24 inches set in ground and marked on west side E.L.L.Co, 20MS. on the east side W.L.C.Co., a pile of stone around the same from whence a stone mound on top of a rocky ridge bears  $N43^{\circ}45'E$  340 varas.
- 21st, Mile- Thence South at 517 varas cross the north line of survey 1062 Block I, EL&RRRR survey, 315 varas east of its NW corner, at 1900.8 varas mound of earth 2 feet high at east edge of post oak shinnery, pits north and south 2x2 feet 12 inches deep.
- 22nd, Mile- Thence South passing through mesquite thicket and post oak shinnery at 517 varas cross the north line of survey 1065 Block I, EL&RRRR survey 315 varas east of its NW corner, at 1900.8 varas an earth mound 2 feet high pits north and south 2x2 feet 12 inches deep.
- 23rd, Mile- Thence South at 430 varas wire fence at 517 varas cross the north line of survey No. 1066 Block I, EL&RRRR Cos. survey, 315 varas east of its NW corner, at 1520 varas pass a point about 166 varas east of a basin and about 400 varas east of a deep draw, at 1900.8 varas an earth mound 2 feet high from which a high white bluff on the SW side of Yellow House canyon bears  $S47^{\circ}W$ , pits north and south 2x2 feet 12 inches deep.
- 24th, Mile- Thence South running about 400 varas east of deep draw and very near parallel with same at 517 varas cross the south line of said survey 1066, at 1860 varas top of brakes on the NE side of Yellow House canyon or Double Mountain fork of the Brazos River, at 1900.8 varas a stone mound 3 feet high and 3 feet in diameter with large stone in center marked on west side EL County, 24 and on East side WLC Co., said mound is on the south slope of said breaks.
- 25th, Mile- Thence South down said slope at 49 varas cross the north line of survey No. 6 Block B9, EL&RRRR Cos, survey, 470 varas east of its NE corner, at 440 varas high bluff at 1900.8 varas an earth mound in valley 2 feet high pits north and south 2x2 feet ~~deep~~ and 12 inches with small rocks in earth.
- 26th, Mile- Thence South at 49 varas cross the north line of survey No. 5 Block B9, EL&RRRR Cos. survey, 470 varas east of its NW corner, at 1510 varas cross the double mountain fork, of Brazos river, course  $S52^{\circ}E$  widthh, 5 varas, at 1900.8 varas a sand stone 6x15x inches by 3 feet, set in ground 12 inches, in valley and marked on west side E.L.L. Co., S, 26 on east side W.L.C.Co, M26.

27th, Mile- Thence South at 49 varas cross the north line of survey No. 13, D&SE Ry, survey, certificate 237 and passing on east side and near the top of a round mound also several rocky hills and deep washes, at 1860 varas the top of the south bluff of said double Mountain fork, at 1900.8 varas a stone mound 2 feet high from which a sharp top peak bears N42°E said mound has a stone in center marked E.L.L Co., S 27.

28th, Mile- Thence South on the Plains at 49 varas cross the north line of section 731, EL&RRRR Cos. survey, and 470 varas east of its NW corner, by calculation as no corner was found also at the same distance the N edge of basin, at 1900.8 varas an earth mound 2 feet high pits north and south 2x2 feet 12 inches deep.

29th, Mile- Thence South on the Plains at 49 varas cross the north line of survey No. 2 in the name of R. Aycock, ~~at~~ 1730 varas east of its NW corner, at 658 varas wire fence, at 999 varas cross the north line of survey No. 11 Block 24, HE&WT Ry. survey, 170 varas west of the NE corner, at 1900.8 varas an earth mound 2 feet high pits north and south 2x2 feet 12 inches deep.

30th, Mile- Thence south at 999 varas cross the north line of survey No. 12 Block 24, HE&WT Ry Cos., survey, 170 varas west of its NE corner, at 1900.8 varas a stone 4x12x20 inches set in ground and marked on the north side S.E.C.L.Co, and S.W.C.Co, and on the south side N.E.C.Ly. Co, and N.W.C. Gar. Co., an earth mound built around said stone 2 feet high pits north, south east and west, 2x2 feet, 12 inches deep, also 2 other stones set in ground north south east and west.

THE STATE OF TEXAS \*  
\*  
COUNTY OF LUBBOCK \* I, Sam. T. Davis, Clerk of County Court in and for Lubbock County, Texas, do hereby certify that the above and foregoing is a true and correct copy of the FIELD NOTES of County Boundary between Lubbock and Crosby Counties as run by surveyor A. B. Jones in 1892, as the same appears of record in my office in Vol. 7, pages 157 to 163 inc.

In testimony whereof, witness my hand and seal of office this 30th, day of Sept. A.D. 1921.

(Seal) Sam. T. Davis, County Clerk,  
Lubbock County, Texas.  
By Amos H. Howard, Dep.

THE STATE OF TEXAS\*  
\*  
COUNTY OF LUBBOCK \*

FIELD NOTES OF A RESURVEY OF CROSBY AND LUBBOCK COUNTY LINE:

- 1st. Mile- BEGINNING at a stone 24x30x6 inches, charcoal cedar stake on the south side, set in center of four old pits, identified by A.B. Jones in 1892 as the North East Corner of Lubbock County as set by Ira Millington, and marked as follows; SWF Co., on NE corner; NWC Co, on the SE corner; NEL Co, and SEH Co, on the west side;  
Thence S0°40'E at 431 varas cross the south line of Survey 68 Block C, 237.9 varas west of the Twichell SE corner of said survey 68, the NE corner of survey 69 Block C, at 1901 varas a point in field.
- 2nd. Mile- Beginning at the end of mile one, continueing S0°40'E at 431 cross the south line of survey 69, 215.3 varas west of its SE conner and the NE corner of survey 70 Block C, at 1901 varas a point in field.
- 3rd, Mile- Beginning at the end of mile two, continueing S0°40'E at 431 varas cross the south line of survey 70, 193.3 varas west of its SE corner, the NW corner of survey 71 Block C, at 1901 varas set a concrete monument with iron pipe set in same with numbers 3 on north and 4 on south, set between 2 old pits the original Jones monument made for the beginning of mile 4.
- 4th, Mile- Beginning at the end of mile three, continueing S0°40'E at 431 varas cross the south line of survey 71, 171.3 varas west of its SE corner, the NE corner of survey 72 Block C, at 1901 varas point.
- 5th, Mile- Beginning at the end of mile four, continueing S0°40'E at 431 varas cross the south line of survey 72, 149.3 varas west of its SE corner, the NE corner of survey 73 Block C, at 1901 varas point in field for the end of the 5th, mile.

Survey 68 Block C, Abstract 791, Certificate No. 98 issued to D&R Ry Co., 124.6 acres in Lubbock County; 18.4 acres in Crosby.

Survey 69 Block C, Abstract 123, Certificate No. 99 issued to D&W Ry, 564 acres in Lubbock County, 76 acres in Crosby.

Survey 70 Block C, Abstract 662, Certificate No. 99 issued to D&W Ry, 571.4 acres in Lubbock County, 68.6 acres in Crosby.

Survey 71 Block C, Abstract 112, Certificate No. 100 issued to D&W Ry, 578.7 acres in Lubbock County, 61.3 acres in Crosby.

Survey 72 Block C, Abstract 501, Certificate No. 100 issued to D&W Ry., 586.1 acres in Lubbock County, 53.9 acres in Crosby.

Survey 73 Block C, Abstract No. 113, Certificate No. 101 issued to D&W Ry. Co., 593.5 acres in Lubbock County, 46.5 acres in Crosby County.

For Map see Plate No. 1 hereto attached.



Hale County  
68

Floyd County  
65

6

124<sup>1/2</sup>A  
Lubbock Co.  
Jones N.E. Corner Lubbock Co.

B-C  
A-791

242<sup>2</sup>

431  
18<sup>1/2</sup>A  
433<sup>1/2</sup>

69  
B-C  
A-123

64  
B-C

564A  
Bg. Mile 2

50°40'E  
1901  
76A

237<sup>2</sup>  
215<sup>1/2</sup>

Plate No. 1  
Lubbock-Crosby  
County Line

70  
B-C  
A-662

63  
B-C

571<sup>1/2</sup>A  
Bg. Mile 3

50°40'E  
1901  
68<sup>1/2</sup>A

193<sup>3/4</sup>

Lubbock County

71  
B-C  
A-112

62  
B-C

578<sup>1/2</sup>A  
Bg. Mile 4

50°40'E  
1901  
63<sup>1/2</sup>A

171<sup>2/3</sup>

Concrete Monument

Crosby County

72  
B-C  
A-501

61  
B-C

586<sup>1/2</sup>A  
Bg. Mile 5

50°40'E  
1901  
53<sup>1/2</sup>A

149<sup>1/2</sup>

Original Jones Corner ●  
Twichell Corner T-C  
Constructed Corner ○

73  
B-C  
A-113

60  
B-C

593<sup>1/2</sup>A  
Bg. Mile 6

50°40'E  
1901  
46<sup>1/2</sup>A

431  
127<sup>1/2</sup>

6th, Mile. Beginning at the end of mile 5, thence S0°40'E at 431 varas cross the north line of survey 74, 127.3 varas west of its SE corner, the NE corner of survey 73, at 1901 varas set a concrete monument with iron pipe in center marked on north 6 on the south 7, set between two old pits, the original Jones monument made for the beginning of mile 7.

7th, Mile- Beginning at the end of mile 6, Thence S0°43'E at 431 varas cross the south line of survey 74, 104.7 varas west of its SE corner, the SE corner of survey 75, at 1901 varas a point in field.

8th, Mile- Beginning at the end of mile 7, Thence S0°43'E at 431 varas cross the south line of survey 75, 81 varas west of its SE corner, the NE corner of survey 76 Block C, at 1901 varas point between two old pits, the original Jones monuments for the end of mile 8.

9th, Mile- Beginning at the end of mile 8, Thence S0°43'E at 431 varas cross the south line of survey 76, 57.3 varas west of its SE corner, the NE corner of survey 77 Block C, at 1901 varas a point in field for end of mile

10th, Mile- Beginning at the end of mile 9, Thence S0°43'E, at 431 varas cross the south line of survey 77, 33.6 varas west of its SE corner, the NE corner of survey 78 Block C, at 1901 varas point in field, concrete monument set in line and in the south fence line of lane between sections 77 and 78, iron pipe in concrete marked 9 and 10.

Survey 74 Block C, Abstract NE¼ 1140-SE¼ 496, Certificate No. 101 issued to D&W Ry., 600.9 acres in Lubbock County, 39.1 acres in Crosby;

Survey 75 Block C, Abstract 114, Certificate No. 102 Issued to D&W Ry, 608.8 acres in Lubbock County, 31.2 acres in Crosby County.

Survey 76 Block C, Abstract 1109, Certificate No. 102 issued to D&W Ry., 616.7 acres in Lubbock County, 23.3 acres in Crosby County.

Survey 77 Block C, Abstract 115, Certificate No. 103 issued to D&W Ry., 624.8 acres in Lubbock County, 15.2 acres in Crosby County.

Survey 78 Block C, Abstract (Crosby County), Certificate---- D&W Ry, 632.7 acres in Lubbock County, 7.3 acres in Crosby.

For Map see Plate No. 2, hereto attached.

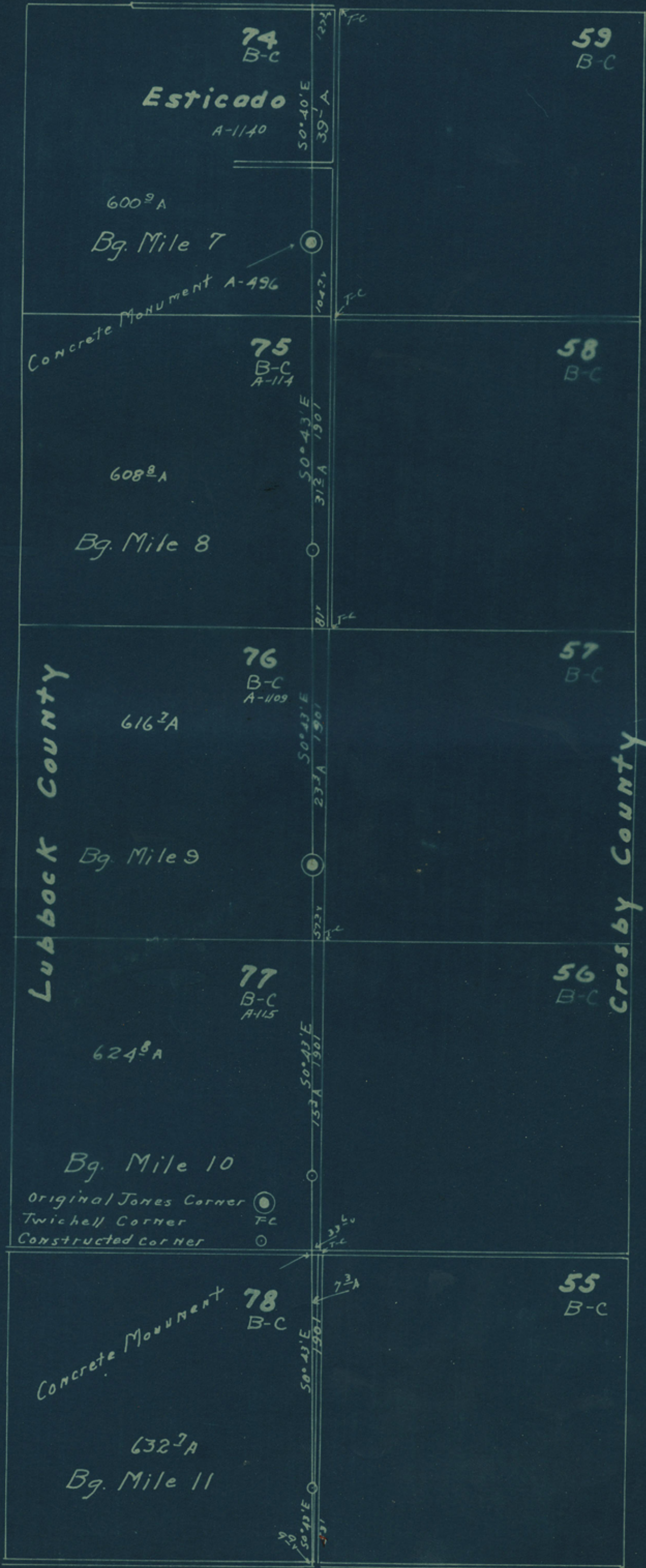


Plate No. 2  
Lubbock-Crosby  
County Line

Lubbock County

Crosby County

Original Jones Corner ●  
Twichell Corner ○  
Constructed Corner ○

- 11th, Mile- Beginning at the end of mile 10, thence  $SO^{\circ}43'E$  at 431 varas cross the south line of survey 78, 9.9 varas west of its SE corner, the NE corner of survey 79 Block C, at 1901 varas a point in NW edge of lake basin, the end of mile 11.
- 12th, Mile- Beginning at the end of mile 10, Thence  $SO^{\circ}43'E$  at 431 varas cross south line of survey 54 Block C, 13.8 varas east of its SW corner, center of S.P.&SF Ry on said line, at 1901 varas a point in cotton field, for the end of mile 12.
- 13th, Mile- Beginning at the end of mile 12, Thence  $SO^{\circ}43'E$  at 431 varas cross the south line of survey 53 Block C, 37.5 varas east of its SW corner, the NW Corner of survey 52 Block C, at 1901 varas point in field for end of mile 13; concrete monument set in line and in the south fence line of lane between surveys 53 and 52.
- 14th, Mile - Beginning at the end of mile 13, Thence  $SO^{\circ}43'E$  at 431 varas cross the south line of survey 52, 61.2 varas east of its SW corner, the NW Corner of survey 51 Block C, at 1901 varas a point in field for the end of mile 14.
- 15th, Mile- Beginning at the end of mile 14, Thence  $SO^{\circ}43'E$  at 431 varas cross the south line of section 51, 84.9 varas east of its SW corner, the NW corner of survey 50 Block C, at 1901 varas a point in field for the end of mile 15.

Survey 79 Block C, Abstract 116, Certificate No. 104 issued to D&W Ry. 639.2 acres in Lubbock County, .7 acres in Crosby County.

Survey 54 Block C, (Crosby County Records) 1.6 acres in Lubbock County, 538.4 acres in Crosby County.

Survey 53 Block C, (Crosby County Records) 8.6 acres in Lubbock County, 631.4 acres in Crosby County.

Survey 52 Block C, (Crosby County Records), 16.6 acres in Lubbock County, 623.4 acres in Crosby County.

Survey 51 Block C, (Crosby County Records), 24.6 acres in Lubbock County, 615.4 acres in Crosby County.

Survey 50 Block C, (Crosby County Records), 32.5 acres in Lubbock County, 607.5 acres in Crosby County.

For map see Plate No. 3 hereto attached.



16th, Mile- Beginning at the end of mile 15, thence  $S0^{\circ}43'E$  at 431 varas cross the south line of survey 50 Block C, H&OB Ry, 108.6 ~~XXXXX~~ varas east of its SW corner, the NW corner of survey 49 Block C, H&OB Ry, at 1901 varas point between two old pits, the Original Jones monuments, Concrete monument set in the south fence line of lane between surveys 50 and 49.

17th, Mile- Beginning at the end of mile 16, thence  $S0^{\circ}43'E$ , at 431 varas cross the south line of survey 49, 132.3 varas east of its SW corner, the NW corner of survey 48, at 1901 varas point between two old pits, the Original Jones monument.

18th, Mile- Beginning at the end of mile 17, thence  $S0^{\circ}47'E$ , at 431 varas cross the south line of survey 48 Block C, 156.4 varas east of its SW corner, at 681 varas cross the south line of Garrison pre-empt, 663.5 varas east of its SW corner, the NW corner of survey 1060 Block D-19, at 1901 varas point between two old pits, the Original Jones monuments.

19th, Mile- Beginning at the end of mile 18, Thence  $S0^{\circ}47'E$ , at 681 varas cross the south line of survey 1060, 717.8 varas east of its SW corner, the NW corner of survey 1059, at 1901 varas a stone set between two old pits, the Original Jones monument.

20th, Mile- Beginning at the end of mile 19, Thence  $S0^{\circ}47'E$ , at 681 varas cross the south line of survey 1059, 743.8 varas east of its SW corner, the NW corner of survey 1061, at 1901 varas a stone with inscriptions, the Original Jones Monument.

Survey 49 Block C, H&OB Ry, 40.5 acres in Lubbock County, 599.5 acres in Crosby County.

Survey 48 Block C, H&OB Ry., 48.5 acres in Lubbock County, 591.5 acres in Crosby County.

Garrison pre-empt, 29.2 Acres in Lubbock, unknown in Crosby County-unable to find field notes to cover.

Survey 1060 Block D-19, Certificate 189 issued to EB&RRRR Co., 232.5 acres in Lubbock County, 407.5 acres in Crosby County.

Survey 1059 Block D-19, Certificate 189, issued to EI&RRRR Co., 246 acres in Lubbock County, 394 in Crosby County.

Survey 1061 Block D-19, Certificate 190 issued to EI&RRRR Co., Abstract 614, 254.8 acres in Lubbock County, 385.2 acres in Crosby County.

For Map see Plate No. 4 hereto attached.

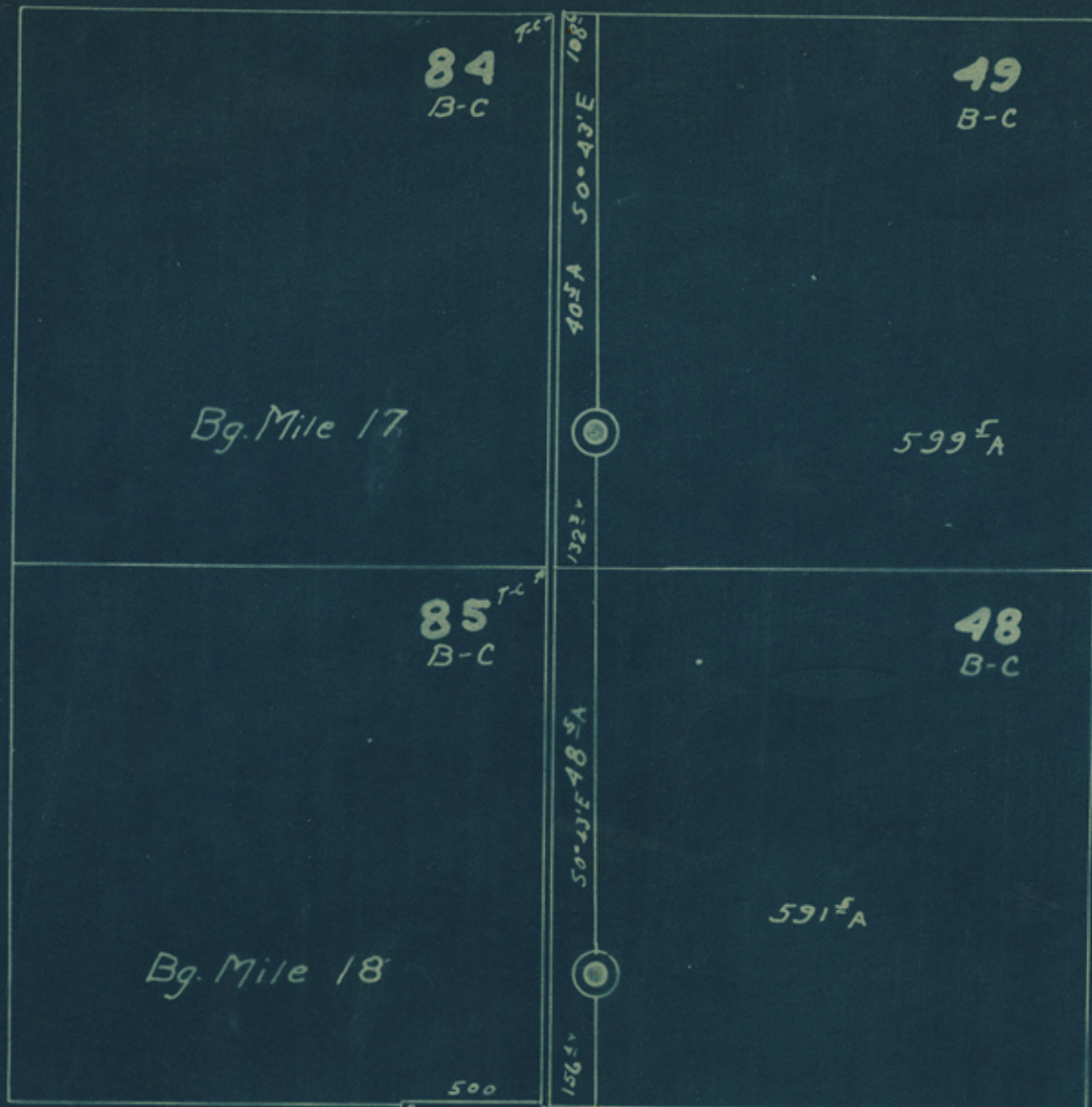

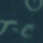

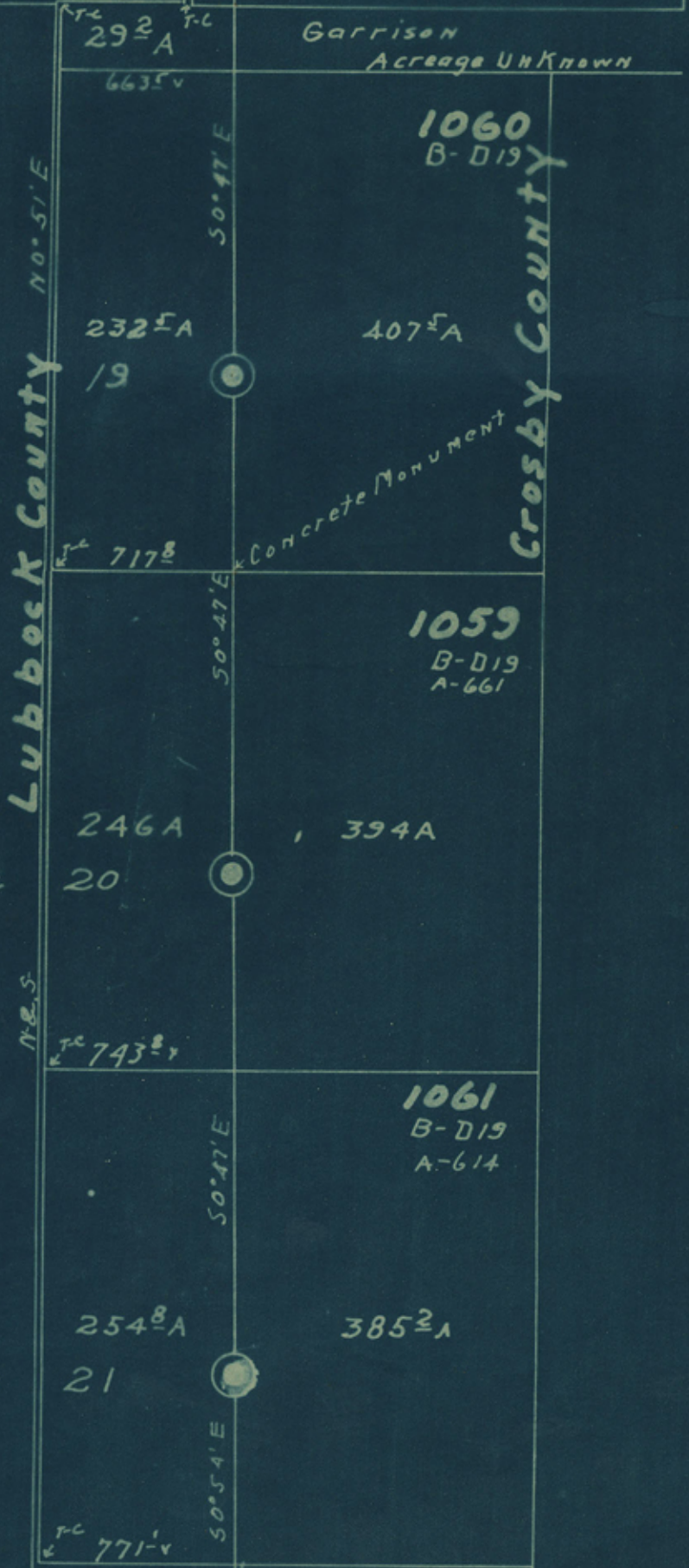


Plate No. 4  
Lubbock-Crosby  
County Line

Original Jones Corner   
 Constructed Corner   
 Twichell Corner - 



Garrison  
Acreage Unknown

Lubbock County No. 51' E

Crosby County

Concrete Monument

Bg. Mile 19

Bg. Mile 20

Bg. Mile 21

21st, Mile- Beginning at the end of mile 20, thence S0°54'E at 681 varas cross the south line of survey 1061, 771.1 varas east of its SW corner, the NW corner of survey 1062, at 1901 varas point between two old pits, the Original Jones monument.

22nd, Mile- Beginning at the end of mile 21, Thence S0°54'E, at 681 varas cross the south line of survey 1062, 800.9 varas east of its SW corner, the NW corner of survey 1065, set concrete monument with pipe in the south line of fence lane, at 1901 varas point.

23rd, Mile- Beginning at the end of mile 22, Thence S0°54'E, at 681 varas cross the south line of survey 1065, 831.7 varas east of its SW corner, the NW corner of survey 1066, at 1901 varas point between two old pits, the Original Jones monument.

24th, Mile- Beginning at the end of mile 23, Thence S0°54'E, at 681 varas cross the south line of survey 1066, 860.5 varas east of its SW corner, and an L corner of survey 2 Block B9, at 1901 varas pile of stone with large stone in center with inscriptions as called for in Jones field notes, the Original Jones monument, 12 varas south of north line of 1, B9, 482.4 varas west of its SE corner.

25th, Mile- Beginning at the end of mile 24, Thence S1°03'E, at 18<sup>89</sup> varas cross the south line of survey 1, Block B9, 447.9 varas west of its SE corner, at 1903 varas point for end of mile.

Survey 1062 Block D-19, Abstract 1211, certificate 190, issued to EL&RRRR Co, 265 acres in Lubbock County, 375 in Crosby County.

Survey 1065 Block D-19 Abstract 613, Certificate No. 210 issued to EL&RRRR Co., 274.6 acres in Lubbock County, 365.4 acres in Crosby County.

Survey 1066 Block D-19, Abstract 1215, Certificate 210 issued to EL&RRRR Co., 288.1 acres in Lubbock County, 356.9 acres in Crosby.

Survey 2 Block B-9, Abstract 902, Certificate 328, issued to D&SE Ry., 367.5 acres in Lubbock County, 105.3 acres in Crosby.

Survey 1 Block B-9, Abstract <sup>22</sup> ~~302~~ ~~issued to EL&RRRR Co.~~, Certificate ~~328~~ 483.4 acres in Lubbock County, 156.6 acres in Crosby County.

Survey 4 Block B-9, Abstract 502, Certificate 56 issued to EL&RRRR Co., 495.1 acres in Lubbock County, 144.9 acres in Crosby County.

For Map see plate No. 5, hereto attached.





- 26th, Mile- Beginning at the end of mile 25, Thence S1°03'E, at 1515 varas Yellow House Creek, at 1889 varas cross the south line of survey 4 Block B-9, 433.2 varas west of its SE corner, the NE corner of survey 3, at 1903 varas point in edge of wash for end of mile 26.
- 27th, Mile- Beginning at the end of mile 26, Thence S1°03'E up south banks of Canyon, at 1889 varas cross the south line of survey 3 Block B-9, 378.5 varas west of its SE corner, at 1903 varas pile of stone, the Original Jones monument for end of mile 27.
- 28th, Mile- Beginning at the end of mile 27, Thence S1°03'E on the Plains at 1889 varas cross the south line of survey 732 Block B-9, 343.8 varas west of its SE corner and being the north line of the Winn survey 35 Block 24, at 1903 varas point between two old pits, the Original Jones monument.
- 29th, Mile- Beginning at the end of mile 28, Thence S1°03'E at 834 varas cross the south line of said Winn survey, 489.4 varas west of its SE corner,\* at 1901 varas point between two old pits, the Original Jones monument, \*192.4 varas west of the NE corner of survey 6 Block 24.
- 30th, Mile- Beginning at the end of Mile 29, thence S1°03'E, at 815 varas cross the south line of said section 6, 146.7 varas west of its SE corner, the NE corner of survey 9 Block 24, at 1901 varas stone with inscriptions, smaller stones north, south, east and west, the Original Jones monuments for the South East Corner of Lubbock County. Smoke stack at Slaton Round-house bears N52°57'30"W.

Survey 3 Block B-9, Abstract 23, Certificate 56 issued to EL&RRRR Co., 506.8 acres in Lubbock County, 133.2 acres in Crosby County.

Survey 732 Block B-9 Abstract 1057, Certificate No. 1148 issued to EL&RRRR Co., Survey contains 518.5 acres in Lubbock County, 121.5 acres in Crosby County.

Survey 35 Block 24, Abstract 1117, W.M.Winn, approximated 77.3 acres in Crosby, acreage in Lubbock unknown.

Survey 6 Block 24, Abstract , Certificate 698 issued to HE&WT Ry, 583 acres in Lubbock County, 57 acres in Crosby County.

Survey 9 Block 24, , Certificate 588 issued to HW&WT Ry., estimated 339 acres in Lubbock County, 20.2 acres in Crosby.

See Plate No. 6 hereto attached for maps.

I, A. L. Harris, County Surveyor for Lubbock County, Texas, and Special surveyor for Crosby County, do hereby certify that the above and foregoing field-notes and plates attached thereto are true and correct; that they truly and correctly represent the Common Boundary line between Lubbock and Crosby County, Texas, as run by Surveyor J.B. Jones in 1892; that the beginning and all points marked as Original Jones monuments were well identified by the surveyor from the field notes made by said Jones, also by now County Judge ~~of~~ P.F. Brown of Lubbock County who was with the Jones party; that all the marks, both natural and artificial, truly represent the same is located on the ground, and that they truly and correctly show the lines, boundaries and corners of the joining surveys as I found them on the ground.

Surveyed on the ground Sept. 5 to 10 inc. 1921.  
J.D. Freeman, and J.C. West, Chainmen.  
In the party, Pink L. Parrish, County Judge Crosby County,  
Andy Wooton, Roy Terrell, and E. King Crosby County Commissioners.  
P. F. Brown, County Judge Lubbock County, and B.N. Wheeler Commissioner of Lubbock County.

*A. L. Harris*

County Surveyor Lubbock County, Texas.  
New Buff & Buff, University Precise #1E Transit.



Plate No. 6  
Lubbock-Crosby Co.  
Line



Original Jones Corner ●  
Twichell Corner - T-c ○  
Constructed Corner ○

Lynn County

Garza County