

Lubbock Co. Bdry. Line 11

LUBBOCK-HOCKLEY  
COUNTY LINE

*Platted on map Feb. 1936.*

*Abstracted in Vol. 57  
Jan. 3. 1935*

*Cont. 56583*

4745-



RECEIVED  
NOV 27 1933  
11-27-33  
REFERRED TO MAP

# LUBBOCK COUNTY

LUBBOCK, TEXAS

November 22nd, 1933.

Hon. J.H. Walker, Commissioner GLO,  
Austin, Texas.

Lubbock-Hockley boundary line.

Dear Sir:-

Replying to your letter of Nov. 20th, regarding this subject, wish to say;

In re, paragraph 2--The same question is raised in this as in Lubbock-Lynn line, ie; filing certified copies and return to County court.

In re, paragraph 3--In my "foreword" I tried succinctly to state the pertinent facts known to me of the manner, method etc. of the survey by Jones of the west line of Lubbock County. Then due to the fact there is no positively well identified intermediate Jones mile-out marker on that line, due mostly to the land being in cultivation at this time, and so far as I know no one has ever tried to thoroughly locate them while the land was in its native state, what else could be done than to adopt a straight line between the positively identified county corners; which had the sanction of the Supreme Court?

In re, paragraph 4-- The Supreme Court adjudicated that matter most satisfactory to both Lubbock and Hockley county, they employed me to mark the line and have accepted and paid for the work and are perfectly satisfied therewith as is, and I trust that you also can become reconciled.

In re, paragraph 6, page 2--I did not take an observation at the time I first ran that line, but checked by magnetic, and considered it was, at the north end, S1<sup>0</sup>04'E, however I took an observation at the NW corner of Lubbock County, Aug. 18th, 1933 at 9,56 PM Eastern elongation and set off 1<sup>0</sup>15'20"W as the true azimuth, and then checked the Lubbock Hockley line and ascertained that it runs S1<sup>0</sup>02'E. I have in my private notes long bearings from this and all other observations, but they cost me a lot of money to take them and I do not consider it good business on my part to record them publicly, if others want them let them get them as I did, at a considerable cost.

Paragraph 7, in mile 6, the distance to the <sup>fence</sup> ~~road~~ is 1608 vs, as shown in the field book, kindly correct the plat, and I will change them on the records. The scale is noted in letter Lubbock-Lynn line.

Yours very truly,

Filed November 27th 1933

J.H. Walker, Comm.  
C.F. Blucher, clk.

A. L. Harris

BEGINNING at an iron pipe marked SW H Co. set in the Ira Millington NW corner of Lubbock County, the SW corner Hale County, which was adopted by the said J. B. Jones as the NW corner of Lubbock County; this being the same corner that judgment was rendered in favor of Hale County Vs. Lubbock County.

I replaced this iron pipe with a concrete marker 2x2 feet at bottom, 1x1 foot at top and 6 feet tall with brass plate screwed to pipe in top of marker with the County names thereon; marker set about half in the ground. This marker is 8.3 varas west of the east line and 449 varas north of the SE corner of section 118 in Block A.

*S1°02'E - (See Harris' letter, herewith, recd. 11-27-33 Blucher.*

Thence South (this line seems to run S1°04'E) at 275 vs. cross the east line of section 118, same being the west line of section 33 Block DT, in all 1900.8 vs. set concrete marker, the end of mile 1.

Mile 2; thence south at 30 vs. cross the south line of section 33, 47.4 vs. east of its SW corner, at 511.5 vs. cross fence line east and west, at 588 vs. cross fence line east and west, at 1356.5 vs. cross fence line east and west, in all 1900.8 vs. concrete marker, the end of mile two.

Mile 3; thence south at 32 vs. the center line of an east and west roadway, in all 1900.8 vs. to concrete marker, the end of mile three.

Section 118 Block A, R. M. Thompson; Lubbock Co. 105 A. Hockley Co. 148 A. Ab. 120

Section 33 Block DT, W. H. Lewis; Lubbock Co. 77.2 A. Ab. 1322 Hockley Co. 4 A.

Section 37 Block P, W. H. Lewis; Lubbock Co. Ab. 1108 Hockley Co. Tract No. 9 114.8 A. Tract No. 8 84.5 A. Tr. 8 10.7 A.

Section 132 Block A, Geo. S. Farris, Lubbock Co., Ab. 1277 S.F. 8312 - 113652 Hockley Co., Tract #8 28.7 A. Tr. #8 4.3 A. Tract #7 110.2 A. Tr. #7 20. A. Tract #6 24.7 A. Tr. #6 5.1 A.

Abstract 1361 Tract #6 80.1 A. Tr. #6 16.9 A.

Abstract 1164 Tract #6 4. A. Tract #5 104.1 A. Tract #4 101. A. Tract #3 97.9 A. Tract #2 53.31 A. Tract #1 SP&SF Ry 1.3 A. Tract #6 1. A. Tract #5 29.5 A. Tract #4 34.3 A. Tract #3 39.1 A. Tract #2 12.1 A. Tract #1 6.8 A. 1.54 A.

See plat No. 1 for reference field notes as above. See plats Nos. 1 and 2 for acreage division as above.

Line runs S1°02'E. See A. H. Harris' letter, herewith, recd. 11-27-33.

74

County, Texas, which is also the West boundary line of Lubbock County, Texas. Boundary line survey of the East boundary line of Hookley

By virtue of a judgment signed by W. R. Chapman, Judge Presiding, in the 104th Judicial District Court of Taylor County, Texas, dated December 3rd, 1930, in case GARZA COUNTY VS. LYNN COUNTY No. 198-B, in which both Lubbock and Hookley Counties were parties and were duly served with process as required by law. A copy of said judgment, which was affirmed by the Supreme Court of the State of Texas, is included in this report.

I, A. L. Harris, County Surveyor of Lubbock County, District Surveyor of Lubbock Land District of which Hookley County is a part, and a licensed State Land Surveyor, having been appointed by the Honorable Commissioner, a Court of both Lubbock and Hookley Counties to re-survey and mark the said J. B. Jones west line of Lubbock County, as the boundary line between Lubbock and Hookley Counties; and having surveyed, marked, mapped and written field notes of the line, do here submit a full report of the same.

*See Lubbock-Lynn line for judgments*  
I am well acquainted with the J. B. Jones above referred to as well as several of the party who were with him when he surveyed the East, South and West lines of Lubbock County, and have often talked with them about the matter. They were employed by the Commissioner's Court of Lubbock County, which limited the party to one week on each of the thirty mile lines; they began at the NE corner of Lubbock County, ran thirty miles southerly, thence thirty miles westerly, and thence northerly attempting to go direct to the NW corner of Lubbock County as marked by Millington going north on the west line they missed the corner and then attempted to run back south to go direct to the SW corner; it seems they ran part of the line, then adjusted part, so that neither line as marked was on a direct line between the two points.

Knowing these facts, I took long bearings and ran a transit line from the north point south the thirty miles and then went back to the north point and adjusted the line to intersect the south point, and set the markers on that line, and have computed the average therefrom.

*Reviewed and filed in Bureau of Land Office on June 2nd, 1931.  
G. F. Blaker, Commissioner*

**Court Decree with Lynn Garza Report**

*See other side for filing date of report.*

72

73

Boundary Line Survey of the East Boundary line of Hockley County, Texas, which is also the West boundary line of Lubbock County, Texas.

By virtue of a judgment signed by W. R. Chapman, Judge Presiding, in the 104th Judicial District Court of Taylor County, Texas, dated December 3rd, 1930, in cause GARZA COUNTY VS. LYNN COUNTY No. 196-B, in which both Lubbock and Hockley Counties were parties and were duly served with process as required by law. A copy of said judgment, which was affirmed by the Supreme Court of the State of Texas, is included in this report.

I, A. L. Harris, County Surveyor of Lubbock County, District Surveyor of Lubbock Land District of which Hockley County is a part, and a Licensed State Land Surveyor, having been appointed by the Honorable Commissioner's Courts of both Lubbock and Hockley Counties to resurvey and mark the said J. B. Jones west line of Lubbock County, as the boundary line between Lubbock and Hockley Counties; and having surveyed, marked, mapped and written field notes of the line, do here submit a full report of the same.

*See Lubbock-Lynn Line for Judgments*

I am well acquainted with the J. B. Jones above referred to as well as several of the party who were with him when he surveyed the East, South and West lines of Lubbock County, and have often talked with them about the matter. They were employed by the Commissioner's Court of Lubbock County, which limited the party to one week on each of the thirty mile lines; they began at the Ira Millington NE corner of Lubbock County, ran thirty miles southerly, thence thirty miles westerly, and thence northerly attempting to go direct to the NW corner of Lubbock County as marked by Millington; going north on the west line they missed the corner and then attempted to run back south to go direct to the SW corner; it seems they ran part of the line, then adjusted part, so that neither line as marked was on a direct line between the two points.

Knowing these facts, I took long bearings and ran a transit line from the north point south the thirty miles and then went back to the north point and adjusted the line to intersect the south point, and set the markers on that line, and have computed the acreage therefrom.

*Received and filed in General Land*

*Office on June 21st, 1934.*

*J. H. Walker, Commissioner  
C. F. Blucher, clk.*

*Court Decree with Lynn Garza Report*

*See other side for filing  
date of report*

Page # 1.

73

2 1/2

118  
LAMB Co.

32  
HALE Co.  
S 89° 11' 40" W

HOCKLEY Co.

31  
LUBBOCK Co.

117  
S 275 V Cross Line

Mi. 1 = 1900.8 V  
1900.8  
W.H. Lewis 77.2 AC  
Ab. 1322  
Ab. 1060. Ct 44 L & S V  
168.5 AC

Block DT

4 AC

248.4 V  
500 V  
R Road 30' 5" 748.4 V  
37  
Tract 9  
126.8 AC

102

Mi. 2 = 1900.8 V  
75.6 V 12 AC  
114.8 AC  
W.H. Lewis  
- 1658 V - (950.4 V)

Tr. No 8  
128.5 AC

10.7 AC  
84.5 AC  
Ab. 1108  
(707.4 V)

Block A. R.M. Thompson

668.9 V  
132  
28.7 AC  
91.6 V  
243  
Tr. No. 7  
130.7 AC

101

Mi. 3 = 1900.8 V  
51 AC S 106 E W  
20 AC  
110.2 AC  
Ab. 1277 = 193 AC  
S.F. 8312-13  
(950.4 V)

Tr. No. 6  
131.9 AC  
24.7 AC

16.9 AC  
80.1 AC  
Ab. 1361 = 97 AC  
Geo. S. Ferris  
(950.4 V)  
(214.6 V)

Block P



29.5 AC  
Ab. 116A  
104.1 AC  
Tr. No. 5  
33.6 AC  
35.0 V

PLAT. No. 1

sub 56588

75

Line runs S 1 1/2 E. See A.L. Harris letter recd. 11-27-33.

Mile 4; Thence south at 32 v. cross fence line east and west, in all 1900.8 v. set concrete marker, for the end of mile four.

Mile 5; Thence South at 32 v. pass center line of east and west 40 foot graded roadway, iron marker bears west 218 v. at 796 v. fence line east and west, at 910 v. house 120 v. west, at 980 v. house 85 f. east, at 1004 v. fence line east and west, at 1399 v. the north fence line of Santa Fe railway, at 1442 v. south fence of railway, at 1486 v. south fence line of State Highway, set 5x5 inch painted pine post marked Lubbock Co. on the east side and Hockley County on the west side, at 1800.8 v. set concrete marker under east and west fence line, at 1900.8 varas point in field, the end of mile five.

Mile 6; Thence South at 1608<sup>OK</sup> v. east and west fence line, at 1900.8 varas set concrete marker, the end of mile six.

For acreage in tracts 1,2,3,4 and 5 of Section 132 Block A, R. M. Thompson, see page #2.

Section 131 Block A, R. M. Thompson;

|                            |                      |
|----------------------------|----------------------|
| Lubbock Co., Ab. 632       | Hockley Co., Ab. 106 |
| (Wileman) Trs. A-B 115.6 A | 98.3 A               |
| (Ellwood) 53.3.A           | 57.8 A               |
| SP&SF Ry. 3.37A            |                      |
| (WE Spencer) N Ry 3.56A    |                      |
| (WA Myrick) 123. A         | 181.7 A              |
| St. Hwy 3.37A              |                      |

See Plat #2

P6

27





Line runs S 1° 02' E. See A. L. Harris letter recd. 11-27-32.

Mile 7; Thence South at 586 v. cross fence line extending east and west, at 1900.8 varas set concrete marker, the end of mile seven.

Mile 8; Thence South 1900.8 varas to concrete marker, the end of mile eight.

Mile 9; Thence south at 1900.8 varas set concrete marker the end of mile 9.

For acreage division of section 131 R. M. Thompson see page #3.

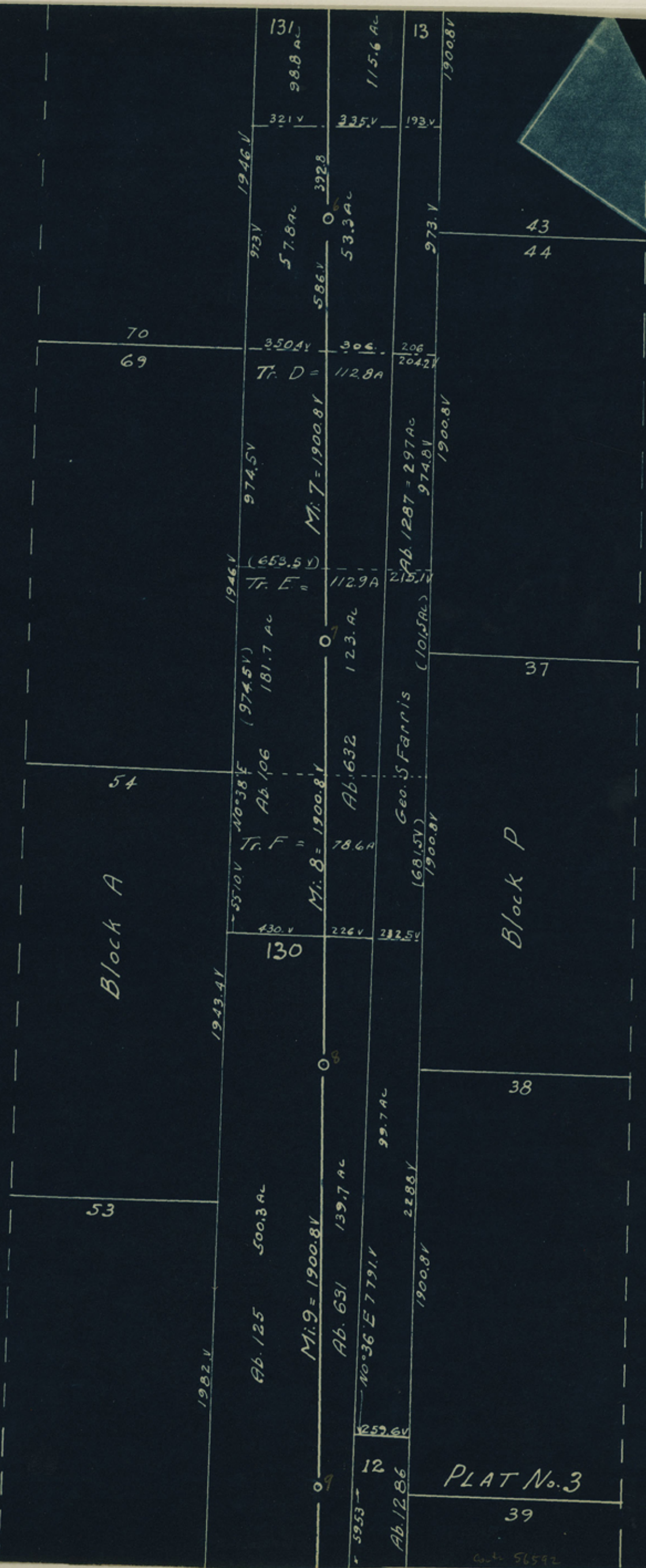
Section 130 Block A, R1 M1 Thompson  
(W.A. Myrick) Lubbock Co. Abstract 631- Hockley Co. Abst. 125  
139.7 A 500.3 A

See plat No. 3

78

4 1/2

P9



PLAT No. 3

62-56592

Line runs S 1/02' E. See A.L. Harris letter recd 11-27-33.

Mile 10; Thence south 1900.8 varas to concrete marker, the end of mile ten.

Mile 11; Thence South at 291.3 varas east and west fence line, at 620 v. pass some 75 varas west of wind mill, at 1113.4 v fence line east and west, from whence iron pipe in center line of north and south roadway bears east 354 varas, at 1900.8 v. concrete marker, the end of mile ~~xxxxxx~~ eleven.

Mile 12; Thence South at 676 varas fence line east and west, at about 1140 varas center of lake basin, at 1900.8 varas concrete marker, the end of mile twelve.

|                                      |                      |
|--------------------------------------|----------------------|
| Section 130 Block A, R. M. Thompson; |                      |
| Lubbock Co; Ab. 631                  | Hockley Co., Ab. 125 |
| (W.A. Myrick) 139.7 A                | 500.3 A              |

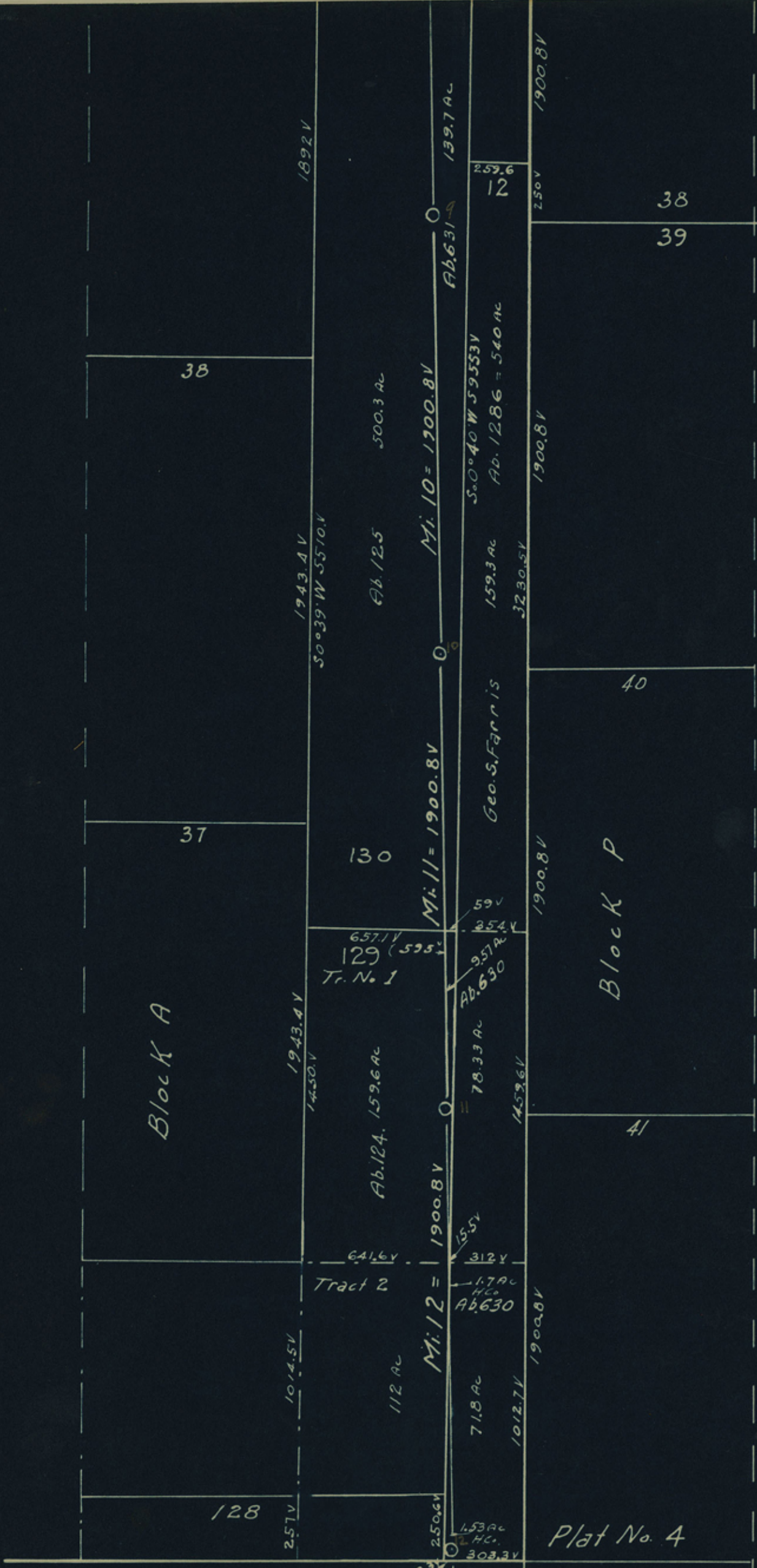
|                                      |                      |
|--------------------------------------|----------------------|
| Section 129 Block A, R. M. Thompson; |                      |
| Lubbock Co., Ab. 630                 | Hockley Co., Ab. 124 |
| Tract #1 9.57 A                      | 159.6 A              |
| Tract #2 1.7 A                       | 112. A               |
|                                      | Balance in Hockley   |

|                            |                  |
|----------------------------|------------------|
| Section 12 Geo. S. Farris; |                  |
| Lubbock Co., Ab. 1286      | Hockley Co., Ab. |
| Tract #2 71.8 A            | 1.53 A           |
| Balance in Lubbock Co.,    |                  |

See Plat No. 4

710

5 1/2



38

37

130

38

39

40

Block P

41

128

Plat No. 4

52

P11

Ab. 1. Ct B 53  
C. & M. R. R. Co.

110.5 AC NE 1/4

49.5 AC  
Ab. 109  
Ct. B.  
G. C. & S. F.

Ab. 87.5 Ct. 3/4 AGH & B

56594

Mile 13: Thence South at 32 varas pass 303.3 varas west of iron pipe, the SW corner 41 and the NW corner 52 Block P, at 1900.8 varas concrete marker, the end of mile thirteen.

Mile 14; Thence South at about 1200 varas lake basin, at 1900.8 varas concrete marker, the end of mile fourteen.

Mile 15; Thence South at 32 varas pass 231.4 varas west of iron pipe under north and south fence line, at 589. v. east and west fence line, at 1573 v. fence line east and west, at 1900.8 varas concrete marker, the end of mile fifteen.

Section 53 Block P, Ct. 8 C&M;

Lubbock Co., Ab. 109  
NE $\frac{1}{4}$  49.5 A  
SE $\frac{1}{4}$  46.6 A

Hockley Co., Ab. 1  
110.5 A  
113.4 A

Section 54 Block P, Certificate 8 C&M;

Lubbock Co., Ab. 844  
NE $\frac{1}{4}$  43.6 A  
SE $\frac{1}{4}$  40.5 A

Hockley Co., Ab.  
116.4 A  
119.5 A

Section 11. T. L. Farris School File No. 7843

Lubbock Co., Ab. 1285  
NE part 15.37 A

Hockley Co. Ab.  
15.26 A  
Balance in Hockley Co.

Section 14 Block D6 Certificate 956 EL&RRRR Co.,

Lubbock Co., Ab. 1032  
North end  
(A. N. Gamble) 141. A

Hockley Co.,  
179. A

See Plats No. 5 and 6

Line runs 5/102'E. See A.L. Harris letter recd 11-27-33.

P12



p13

Plat 5

Line runs S 1/202' E. See A. L. Harris letter recd. 11-27-33.

Mile 16; Thence south at 53 varas pass 251.5 varas west of iron pipe set to mark the NW corner of section 47 in Block P, at 1149 varas fence line east and west, in all 1900.8 varas to concrete marker, the end of mile sixteen.

Mile 17; Thence South at 50 varas pass 217.6 varas west of iron pipe set for the NW corner of section 13 in Block D6, at 258 v. fence line east and west, at 1283 v. north fence line of State Highway, at 1311 varas north fence line of railway, set railway county line marker, at 1347.3 varas south fence line of railway, set railway county line marker, at 1900.8 varas set concrete marker, the end of mile seventeen.

Mile 18; Thence South at 51.5 varas pass 184.5 varas west of iron pipe set to mark the NW corner of section 11 Block D6, at 1674 v. fence line east and west, at 1900.8 varas concrete marker, the end of mile eighteen.

Section 14 Block D6 Ct. 956 EL&RRRR Co.,  
 Lubbeck Co., Abst. 1032                      Hockley Co., Ab.

|                 |        |        |
|-----------------|--------|--------|
| N end           |        |        |
| (A. N. Gamble)  | 141. A | 179. A |
| Cent. pt.       |        |        |
| N of Ry         | 38.7 A | 55.5 A |
| (V. A. Hartman) |        |        |
| SP&SF Ry.       | 1.2 A  | 2.1 A  |
| So. of Railway  |        |        |
| Tract #4        | 20.6 A | 33.5 A |
| Tract #3        | 16.7 A | 29.2 A |
| Tract #2        | 16.1 A | 29.8 A |
| Tract #1        | 25.3 A | 51.4 A |

See plat No. 6

714

7 1/2

8  
127

T.L. Farris

2690.0

3610.0

17

179 AC

Mi. 16 = 1900.8 V

Ab. 1032 (1956 F.L. & R.R.R.)

0 251.5 V

14  
15  
16  
17  
18  
19  
20  
21  
22  
23  
24  
25  
26  
27  
28  
29  
30  
31  
32  
33  
34  
35  
36  
37  
38  
39  
40  
41  
42  
43  
44  
45  
46  
47  
48  
49  
50  
51  
52  
53  
54  
55  
56  
57  
58  
59  
60  
61  
62  
63  
64  
65  
66  
67  
68  
69  
70  
71  
72  
73  
74  
75  
76  
77  
78  
79  
80  
81  
82  
83  
84  
85  
86  
87  
88  
89  
90  
91  
92  
93  
94  
95  
96  
97  
98  
99  
100

737.0  
1  
BLK D

11

1063.0  
55.5 AC

Mi. 17 = 1900.8 V

38.7 AC

1900.8 V

47

13

D.6

To Levelland State Highway To Lubbock

577.0 V

522.3 V

522.3 V

577.0 V

821.0 V  
2  
2

294.6 V

14

51.4 AC

29.8 AC

29.2 AC

Mi. 18 = 1900.8 V

25.3 AC

16.1 AC

16.7 AC

1900.8 V

33.5 AC

20.6 AC

611 V

10

184.5 V

217.6 V

722.0 V

Plat 6.

Block

p15



Line runs S 1° 02' E. See A. L. Harris letter recd 11-27-33.

Mile 19; Thence South at 50 v. pass 160 v. west of iron pipe set for the NW corner section 16 Block D6, also at 50 v. pass 27.4 v. west of iron stake set as the original NW corner of section 8, Block D, J. W. Peeler, at 176.3 v. fence line east and west, at 1855 v. fence line east and west, at 1900.8 varas concrete marker, the end of mile nineteen .

Mile 20; Thence South at 50 v. center line of east and west 40 foot county roadway, at 68 v. pass some 80 v. west of house, at 220 v. fence line east and west, at 1683 v. fence line east and west, at 1900.8 varas concrete marker, the end of mile twenty.

Mile 21; Thence South at 50 v. pass 95 v. west of center line of north and south graded roadway, at 500 v. fence line east and west, at 1200v pass through shed, house is some 40 varas east, at 1900.8 varas concrete marker, the end of mile twenty-one.

Section 2 Block D - J. W. Peeler  
Lubbock Co.,  
Tract #1                    2.4 A

Hockley Co.,  
Balance all in  
Hockley County.

Section 8, Block D, J. W. Peeler;  
Lubbock Co. Ab. 1266

Hockley Co., Ab.

|          |        |           |
|----------|--------|-----------|
| Tract #1 | 15.1 A |           |
| Tract #2 | 30.2 A | 1.6 A     |
| Tract #3 | 19. A  | 4.8 A     |
| Tract #4 | 13.5 A | 6.6 6.6 A |
| Tract #5 | 11.9 A | 8.8 A     |
| Tract #6 | 10.3 A | 11.2 A    |
| Tract #7 | 9.4 A  | 14.7 A    |

See Plat No. 7

P116

8 1/2

14 D6

Tr No. 1  
1 BIK.D  
321

51.4 AC  
38.7 AC  
8.66 V

2

294.6 V

340 V  
368.4 V  
2.4 AC

11  
16

Tr No. 1

Tr No. 2

2804.2 V / 1.6 AC  
Mi. 19 = 1900.8 V  
151 AC  
438.5 V  
30.2 AC  
J.W. Peeler  
1900.8 V

D-6

Tr No. 3

1223.5 V

3

Tr No. 4

203.2 V  
18 AC  
Mi. 20 = 1900.8 V  
19 AC  
1900.8 V

17

Block

Tr No. 5

730 V  
6.6 AC  
730 V  
13.5 AC  
Mi. 20 = 1900.8 V

20

Tr No. 6

2919.8 V  
11.2 AC  
Mi. 21 = 1900.8 V  
8.8 AC  
11.9 AC  
730 V  
10.3 AC  
1900.8 V

Tr No. 7

1250 V

4

14.7 AC  
798.8 V  
730 V  
1900.8 V

Plat. 7

27

P17

Line runs S 1/2 E. See A.L. Harris letter recd 11-27-33.

Mile 22; Thence South at 50 v. pass 61 v. west of the NW corner of section 27 Block D6, roadway north and south and east, at 71 v. center line of roadway east and west, at 1097 v. pass 4 v. west of windmill, at 1698 v. fence line east and west, at 1900.8 v. concrete marker, the end of mile twenty two.

Mile 23; Thence South at 80 v. pass 25 v. east of house, at 1321 v. cross west fence line of graded roadway, at 1900.8 v. point in graded road 3.5 v. east of center of N & S roadway, the end of mile twenty three.

Mile 24; Thence South at 50 v. pass 48 v. east of the SW corner section 30, the NW corner section 23 in Blocks D6 and CB, at 300 v set concrete marker in the east fence line of north and south graded roadway, at 520 v. fence line east and west, at 1002 v. fence line east and west in lake basin, at 1900.8 v. concrete marker, the end of mile twenty four.

Section 9 Block D, B. F. Montgomery, S.F. 7841

|                       |        |              |         |
|-----------------------|--------|--------------|---------|
| Lubbock Co., Ab. 1257 |        | Hockley Co., |         |
| N. end                |        |              |         |
| (Stewart)             | 9.67 A |              | 23.43 A |
| N. part               |        |              |         |
| (Arnold)              | 4.2 A  |              | 16.3 A  |
| S part                |        |              |         |
| (Ellwood)             | 5.5 A  |              | 138.5 A |

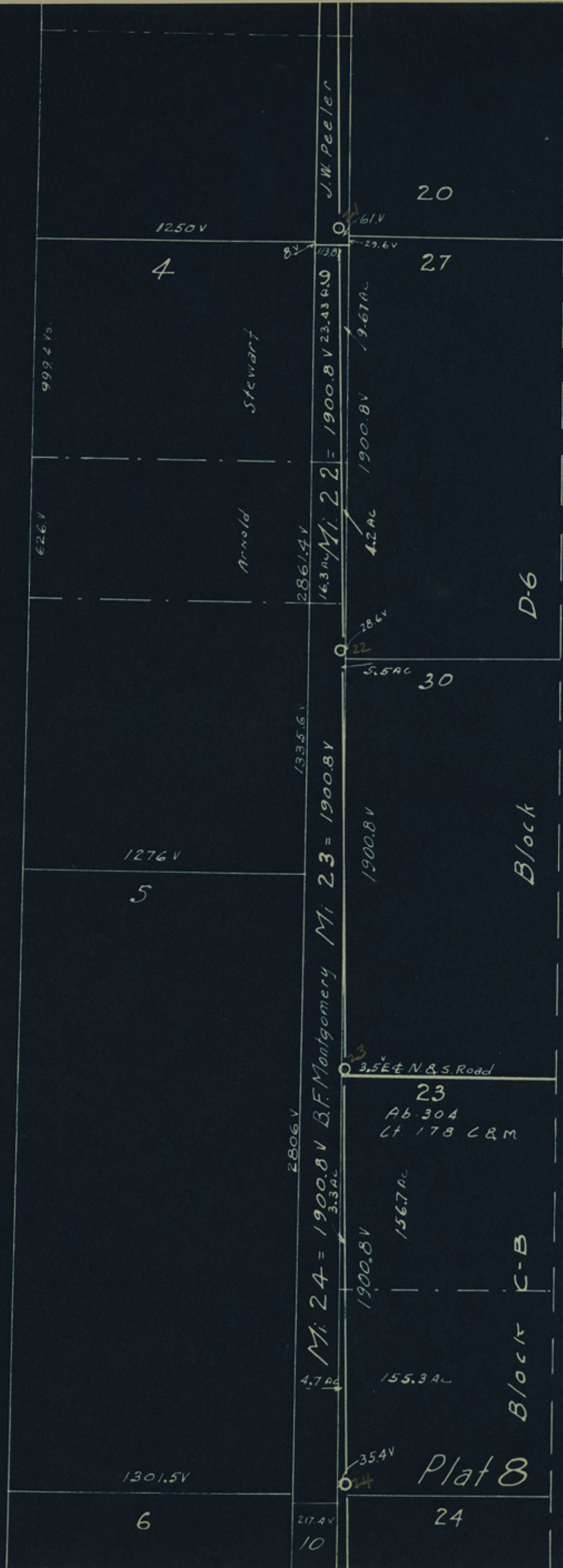
Section 23 Block CB, Ct. 178 C&M

|                      |         |                  |       |
|----------------------|---------|------------------|-------|
| Lubbock Co., Ab. 304 |         | Hockley Co., Ab. |       |
| NW 1/4               | 156.7 A |                  | 3.3 A |
| SW 1/4               | 155.3 A |                  | 4.7 A |

See Plat No. 8

P18

719



Line runs S 1° 02' E. See A. L. Harris letter recd 11-27-33

Mile 25; Thence South at 52 v. cross the south line 23, the north line of section 24, the common corners are 35.4 v. west, at 690 v. fence line east and west, at 895 v. pass 3 v. west of windmill, house some 20 v. west, at 927.3 v. north fence line of railway, at 971 v. south fence of railway, at 1015.5 v. set State Highway marker in the south line of highway, at 1900.8 varas set concrete marker, the end of mile twenty five.

Mile 26; Thence South at 51 v. the south line of section 24, the north line of section 27 Block CB, their corner being 67.8 v. west, at 95 v. pass 15 v. west of house, at 350 v. fence line east and west, at 1002 v. fence line east and west, at 1506 v. pass 4 v. east of windmill, house some 30 v. NE, at 1900.8 v. concrete marker, the end of mile twenty six.

Mile 27; Thence South at 51 v. the south line of section 27, the north line of section 28 Block CB, section corner is west 101.5 v, at 554.3 v. fence line east and west, at 587 v. the south line of section 28 Block CB the north line of section 73 Block 20, at 1534 v. fence line east and west, set concrete marker on north side of fence, at 1900.8 varas point in field the end of mile twenty seven.

Section 24 Block CB Ct. 172 C&M

|                      |          |                  |
|----------------------|----------|------------------|
| Lubbock Co. Ab. 1324 |          | Hockley Co., Ab. |
| NW $\frac{1}{4}$ Ry  | 88.7 A   | 6.64 A           |
| S part Ry            | 367.17 A | 9.85 A           |
| Railway              | 7.2 A    | .44 A            |

Section 27 Block CB Ct. 161 W. T. RR Co.

|                      |          |                 |
|----------------------|----------|-----------------|
| Lubbock Co., Ab. 436 |          | Hockley Co., A. |
| NW $\frac{1}{4}$     | 147.17 A | 12.83 A         |
| SW $\frac{1}{4}$     | 144.46 A | 15.54 A         |

Section 28 Block CB Ct. 161 W<sup>T</sup> Ry

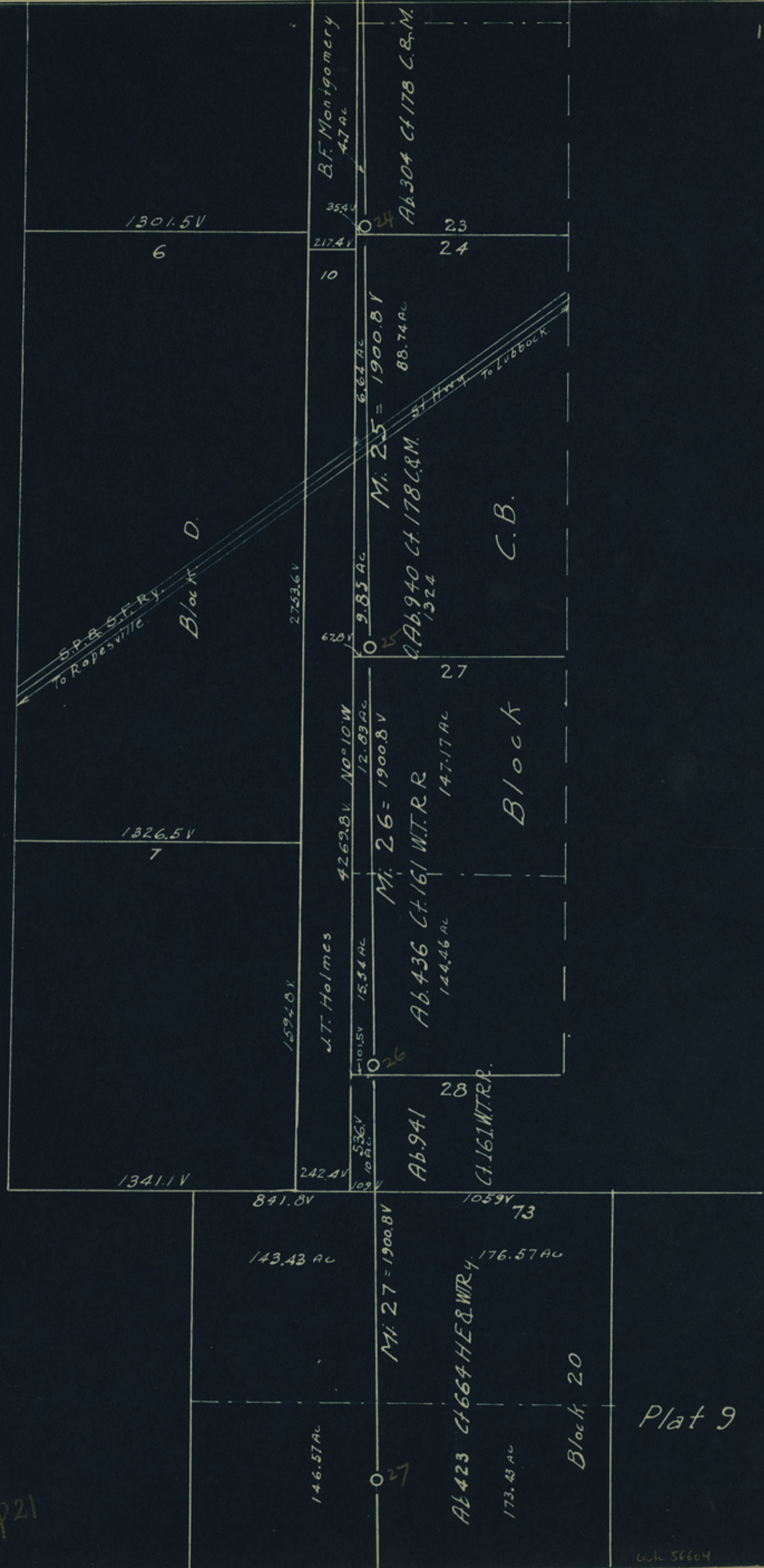
|                      |  |             |
|----------------------|--|-------------|
| Lubbock Co., Ab. 941 |  | Hockley Co, |
| Balance              |  | 10 A        |

Section 73 Block 20, Ct. 664 HE&WT Ry

|                      |          |                  |
|----------------------|----------|------------------|
| Lubbock Co., Ab. 423 |          | Hockley Co., Ab. |
| NE $\frac{1}{2}$     | 176.57 A | 143.43 A         |
| SE $\frac{1}{2}$     | 173.43 A | 146.57 A         |

See Plat No. 9

P20



P21

Line runs S 1/2 E. See A. L. Harris letter recd 11-27-33.

Mile 28; Thence South at 587 v. fence line east and west, at 1215 v. pass through barn, house some 75 varas east, at 1900.8 varas point in private roadway, the end of mile twenty eight.

Mile 29; Thence South at 615 v. fence line north side east and west graded roadway, set concrete marker adjacent to and north side of said fence and at 613 v. at 1900.8 v. set concrete marker, the end of mile twenty nine.

Mile 30; Thence South at 625 v. fence line east and west on south side of roadway, at 1969 varas set concrete county corner marker 2x2 feet at bottom, 1x1 foot at top and 6 feet long with brass plate marker screwed to pipe in top of concrete, set in the original J. B. Jones SW corner of Lubbock County.

*For connection to Sec. Corner, see field notes by Harris of Lubbock-Lynn County Line. (Blucher)*

Section 73 Block 20, Certificate No. 664 issued to HE&WT Ry

|                      |                            |
|----------------------|----------------------------|
| Lubbock Co., Ab. 423 | Hockley Co., Ab.           |
| N 1/2 176.57 A       | 143.43 A                   |
| S 1/2 173.43 A       | <del>146.47</del> 146.47 A |

Section 62 Block 20, Certificate No. 658 HE&WT Ry Co.,

|                       |                  |
|-----------------------|------------------|
| Lubbock Co., Ab. 1072 | Hockley Co., Ab. |
| 337.5 A               | 302.5 A          |

Section 49 Block 20, Certificate No. 652 HE&WT Ry, Co.,

|                      |                  |
|----------------------|------------------|
| Lubbock Co., Ab. 389 | Hockley Co., Ab. |
| 324.27 A             | 315.73 A         |

Section 1 Block 00 Copeland

|                       |                      |
|-----------------------|----------------------|
| Lubbock Co., Ab. 1067 | Hockley Co., 258 Ab. |
| 220.8 A               | 415.4 A              |
| Lynn County           | Terry County         |
| 2.9 A                 | 3.4 A                |

See Plat No. 10

I, A. L. Harris, County and District Surveyor, Lubbock Land District and Licensed State Land Surveyor, do hereby certify that the foregoing described survey was actually made by me on the ground, according to law, on the date and with the chain carriers duly qualified and that all the lines, markings, field notes and plats with the acreage to be assessed within each County, is truly set forth in the foregoing field notes and plats.

Surveyed during January, February and March A.D. 1931. Charley T. Burns, Hazel Burns, and Thad Thomas, chain men.

*A. L. Harris*  
County, District and  
Licensed State Land Surveyor

NOTE: The North and South concrete County corners are 2x2 feet at bottom by 1x1 foot at top and six feet long, each mile concrete marker is 1x1 foot at bottom by 8x8 inches at top and six feet long, all markers have brass plate screwed to iron pipe set in top of marker with county names cut thereon.

722



723  
10 Block C.B.  
Terry County

9  
2.9 AC  
Lynn County

Plat 10.



THE STATE OF TEXAS  
COUNTY OF Hockley

I, J.W. Percy, County Clerk of Hockley

County, Texas, do hereby certify that the foregoing is a true correct copy of a typewritten and blue print map report of A.L.Harris, Surveyor, who was duly authorized to survey and mark the boundary line between Hockley County and Lubbock County, together with its certificate of authentication, was filed for record in duplicate in my office this the 19 day of June A.D. 1934, and duly recorded the same day in Special County Line Volume No.1 : one copy in the Clerk's Records and one copy in the Surveyors Records.

Witness my hand and the official seal, at my office in Levelland Texas, this the 19 day of June A.D. 1934.

J. Warren Percy  
County Clerk Hockley County, Texas

By Nina Burnett deputy

Received and filed in General  
Land Office on June 21st, 1934

J.H. Walker  
Commissioner  
C.F. Blucher  
clerk

THE STATE OF TEXAS            { In the County Court of Hockley  
  \*  
COUNTY OF HOCKLEY            { County, Texas, June Term, A.D. 1934

In The Matter of Establishing the Hockley and  
Lubbock County Boundary Line.

This the 19 day of June A.D. 1934, came on to  
be considered the report, consisting of typewritten field notes  
and blue print map, of A.L. Farris, Surveyor, who heretofore  
having been duly and jointly employed by said Counties to survey  
and mark said boundary line, and the court having examined the  
same, it is ordered by the court that said report be and is  
hereby in all respects approved, and said report has been duly  
filed for record in duplicate with the County Clerk of said  
county.

J. P. Potts  
County Judge Hockley County, Te

The STATE OF TEXAS            {  
  \*  
COUNTY OF Hockley            { I, J.W. Pearcey, Clerk of the  
County court of said county, do hereby certify that the above and  
foregoing instrument in writing is a full, true and correct copy  
of an order of the County Court of said County, approving the  
report of A.L. Farris, Surveyor, in the matter of establishing  
the true boundary line between Hockley County and Lubbock  
County: as same was filed for record the 19 day of June  
A.D. 1934, and recorded in Vol. 1 Minutes of County  
Court of said county, and also remain on file in my office among  
the papers of said report.

Witness my hand and seal of office, in Levelland Texas,  
this the 19 day of June A.D. 1934.

Warren Pearcey  
Clerk County Court of Hockley  
County, Texas.

(seal)  
Received and filed in General Land  
office on June 21st, 1934.  
P25 J.H. Walker, Comm  
C.F. Blucher, clk.

By Nina Burnett Deputy

The State of Texas, ↓  
County of Lubbock, ↓

I, Ed D. Allen, County Clerk of Lubbock County, Texas, do hereby certify that the foregoing is a true and correct copy of a typewritten and blue print map report of A.L. Harris, Surveyor, who was duly authorized to survey and mark the boundary line between Lubbock and Hockley Counties, together with its certificate of authentication, was filed for record in my office at this the 24 day of Nov. A.D. 1933 and duly recorded the same day in Special County Line Volume No. one.

Witness my hand and the official seal, at my office in Lubbock Texas, this the 30th, day of December A.D. 1933.

Ed D. Allen

County Clerk Lubbock County, Texas.

By Lewis Moore Dep.

Recd 2-17-34

Filed February 17th, 1934

J.H. Walker  
Comm.  
C.F. Blucher  
clk.

P26

The State of Texas, ( )  
County of Lubbock, ( )  
\*

I, A.L.Harris, County Surveyor Lubbock County, Texas, do hereby certify that the foregoing is a true and correct copy of typewritten field notes and blue print map, and being a report made by me as surveyor, who heretofore was duly authorized to survey and mark the County Boundary Line between Lubbock and Hockley Counties, by authority of the Commissioner's Courts of said Counties, together with its certificate of authentication, was duly filed and recorded in my office in Special Volume Lubbock-Hockley Boundary Line,

Witness my hand at Lubbock Texas, this the 30th, day of December, A.D. 1933.

*A. L. Harris*  
County Surveyor Lubbock County, Texas.

THE STATE OF TEXAS ( In the County Court of Lubbock  
\*  
COUNTY OF Lubbock ( County, Texas, Term, A.D. 1933

In The Matter of Establishing the Hockley and  
Lubbock County Boundary Line.

This the 27th day of Dec. A.D. 1933, came on to  
be considered the report, consisting of typewritten field notes  
and blue print map, of A.L. Harris, Surveyor, who heretofore  
having been duly and jointly employed by said Counties to survey  
and mark said boundary line, and the court having examined the  
same, it is ordered by the court that said report be and is  
hereby in all respects approved, and said report has been duly  
filed for record in duplicate with the County Clerk of said  
county.

G. L. Pitts  
County Judge Lubbock County, Tex

The STATE OF TEXAS (   
\*  
COUNTY OF Lubbock ( I, Ed D. Allen, Clerk of the  
County court of said county, do hereby certify that the above and  
foregoing instrument in writing is a full, true and correct copy  
of an order of the County Court of said County, approving the  
report of A.L. Harris, Surveyor, in the matter of establishing  
the true boundary line between Lubbock County and Hockley  
County: as same was filed for record the 27th day of Dec.  
A.D. 1933, and recorded in Vol. 2 Minutes of County  
Court of said county, and also remain on file in my office among  
the papers of said report.

Witness my hand and seal of office, in Lubbock Texas,  
this the 27th day of Dec. A.D. 1933.

*Filed February 17th, 1934*

(seal)

*J. H. Walker*  
Comm.

*C. F. Blucher*  
clerk.

Clerk County Court of Lubbock  
County, Texas.

By Ed D. Allen Dept.

227

Nov. 20, 1933

Mr. A. L. Harris,  
Lubbock, Texas

Dear Sir:

Your field notes and report of survey of the Lubbock-Hockley county line were received on October 10th, 1933. I have only now completed examination of this work and find as follows:

Your report indicates care in preparation, as well as in the survey, and appears acceptable when certain legal requirements are complied with. I refer you to the Revised Civil Statutes of 1925, Chapter 4, which refers to county lines. Article 1587 provides for return of field notes to the county court.

From your report, I judge that your survey was not an actual retrace of the J B Jones line in its entirety, but is a straight line joining the J B Jones Northwest and Southwest corners of Lubbock county. Is this correct?

In view of the fact that the courts have held that where a county line has been established and recognized in a certain position, it will control over the position called for in the Creating Act, should there be a difference, (see also Revised Civil Statutes of 1925, Chapter 6); I would like to know the facts concerning this feature of the matter, particularly if there are any of the intermediate J B Jones corners on this line now in existence.

Your report should show your authority for making the survey. Hence, it will be necessary that this department be furnished a certified copy of the court order from both Lubbock and Hockley counties, directing you to make this survey, together with any instructions given therewith. A simple statement of appointment is not sufficient. It is necessary also that the department be furnished a certified copy of the court order from the county court of both Lubbock and Hockley counties, accepting and approving your field notes and report.

728

As to the survey itself, it appears to be correct, altho there are a few questions I would like to ask. Does this line run on a true meridian? Did you make an observation on Polaris to determine the meridian? What is the correct declination as you found it on this line? On page 2 of your report, you state at the beginning corner "Thence South (this line seems to run S 1° 4' E) --" Is the parenthetical reference to the old Jones line? If so, how was the Jones line determined? I ask for this information in order that the record may reflect the facts as they exist on the ground, and that the laws pertaining to county lines have been complied with.

On page 3, mile 6: <sup>text</sup> is the distance to the road 1608 varas or 1508 varas? The list calls for one and the sketch for the other. Inasmuch as the sketches should show the scale to which they are drawn, I shall ask you to state what that scale is. It appears to be 500 varas to the inch.

When the information above requested is submitted and found satisfactory, I feel sure that your Lubbock-Hockley county line report can be approved.

Very truly yours,

Commissioner

Blucher:eb



Hockley-Lubbock

LUBBOCK COUNTY

LUBBOCK, TEXAS

February 16th, 1934.

Hon. J.H. Walker, Commissioner GLO,  
Austin, Texas.

My Dear Sir:-

Hon. J.P. Potts, County Judge of Hockley County, Texas, has just informed me that he sent to your office some time back his approval of the Hockley-Lubbock County Line survey and report, which I had previously forwarded to your office, and which I am herewith enclosing with the approvals of myself and of the County Judge of Lubbock County, and the clerks certificate thereof.

I trust that this will complete in all details the county line work, and that I may have your full approval and file date by return mail.

Yours very truly,

*A. L. Harris*

*Careful examination of correspondence records fails to disclose receipt here of any copy of approval by Hockley Co court of the Hockley-Lubbock Line. Return by C. ell of record of F/A also required.*

RECEIVED

FEB 17 1934

REFERRED TO *mup abstract*

P30



June 11, 1934

Mr. A. L. Harris,  
1724 - 13th St.,  
Lubbock, Texas

Dear Sir:

This is in reply to your letter of June 8th with which you enclosed corrected map of the Cochran-Bailey county line. This map has been turned over to the abstract department for attention.

In reply to your request that in the future, reports made by you be filed immediately and receipt therefor sent to you, I shall say that I regret that I can not do this because of the large amount of correspondence coming to this department now. I shall be glad to give such matters my attention as soon as can possibly be done, however.

The field notes for the Hockley-Terry county line have been received and were filed in this office on May 25, 1934. The abstract clerk will give them attention in the near future.

As to the Hockley-Lubbock county line, report for which was received on February 17th this year, I shall state that a careful examination of the correspondence records, extending back for date into the summer of last year, discloses that no copy of order of the county court of Hockley county has been received from Hon J. P. Potts, county judge of that county, as mentioned in your letter of February 16th.

The copy of the order from the Lubbock county court which you enclosed was received and placed with your report. Will you kindly call attention of this matter to Judge Potts in order that he may have certified copies from the minutes of the county court, indicating approval of the field notes of said county line, submitted to this department.

Yours very truly,

Commissioner

Blucher:eb

231



# General Land Office

State of Texas

Austin

J. H. WALKER, COMMISSIONER  
S. S. SAYERS, CHIEF CLERK

June 22, 1934

Mr. A. L. Harris,  
Lubbock, Texas

Dear Sir:

This is to advise that your report on survey of the Lubbock-Hockley county line, which was received on February 17, 1934, has been examined and endorsed "filed" on June 21, 1934, upon receipt of copies of court orders of the acceptance of your report.

Yours very truly,

Commissioner

Blucher:eb

R32

copy 56616