

*FIELDNOTES AND SKETCH
OF
LYNN-GARZA COUNTY LINE
BY A.L. HARRIS*

*RECEIVED AND FILED IN GENERAL
LAND OFFICE JUNE 20, 1934*

Platted on map Feb. 1936.

*Court Decree herein
GARZA Co. vs LYNN Co.*

Abstracted in Vol. 57.

1/9/1935



No. 196-B

GARZA COUNTY | IN THE 104TH JUDICIAL
VS | DISTRICT COURT OF
LYNN COUNTY | TAYLOR COUNTY, TEXAS.

JUDGMENT

Dec. 3rd., 1930.

Be it remembered that heretofore to-wit on the 7th day of April, A. D. 1930, the above entitled and numbered cause was called for trial, whereupon the plaintiff Garza County, and the defendants, Lynn County, Lubbock County, Terry County, Yoakum County, Cochran County, Hockley County and Crosby County, appeared by their respective counsel and announced ready for trial, but the County of Kent, although duly served with process herein as required by law, came not and wholly made default; and a jury being waived, the matters of law and fact were submitted to the court, who, having heard the pleadings, the evidence and the argument of counsel, did take the matter under advisement and consideration until this date, and here and now does enter the following judgment disposing of the matters in controversy between the parties to this suit, to-wit:

The court finds from the evidence that the true and correct southeast corner of Lubbock County, southwest corner of Crosby County, northwest corner of Garza County and the northeast corner of Lynn County is marked, fixed and described on the ground as follows:

A large stone 4 x 12 x 20 inches set in ground and marked on the north side ^{LCo} SEC and SWCC Co, and on the south side NEC Ly Co, and NWC Gar Co, an earth mound built around said stone 2 ft. high, pits N, S, E and W 2 x 2 ft. 12 in. deep, also four stones set in the ground, N, E, S and W at about 6 varas, which said large stone was placed by J. B. Jones who surveyed the east and south lines of

Lubbock County in the year 1892, and made a report thereof to the Commissioners Court of Lubbock County, Texas, said report bearing date of May 12, to 28, 1892, and filed for record June 30, 1892, and recorded on pages 148 to 172 of Vol. 7, of the Deed Records of Lubbock County.

That the boundary line between Lubbock County and Crosby County is a line surveyed and marked on the ground by J. B. Jones in the year 1892, having for its south end a large stone last above mentioned, known as the Jones southeast corner of Lubbock County; that the south boundary line of Lubbock County and the north boundary line of Lynn County is marked and designated on the ground and known as the J. B. Jones line which he surveyed and marked in the year 1892, having for its east end the Jones southeast corner of Lubbock County as above described, and extends westwardly from said Jones southeast corner of Lubbock County as shown by his said report bearing date of 12th to 28th days of May, 1892, and having for its western end a corner which is described in said report as follows:

An earth mound 2 ft. high built over a stone 5 x 16 x 20 inches set in ground and marked on the west side SEC H Co and NEC T Co, and on east side SWC L Co and NWC L Co pits N S E and W 2 x 2 ft. 12 in. deep, said corner is north of a basin about 500 vrs.

The court further finds that the Jones southwest corner of Lubbock County as above described is also the common corner of Lubbock, Lynn, Terry and Hockley Counties, same being the northwest corner of Lynn County, the northeast corner of Terry County and the southeast corner of Hockley County; that the west line of Lubbock County and

the east line of Hockley County, Texas, is established and marked on the ground and is known as the J. B. Jones line surveyed in the year 1892 and extend northward as marked by him and as shown in his said report from the said common corner of Lubbock, Lynn, Terry and Hockley Counties, and as above described, and ending at the southwest corner of Hale and the northwest corner of Lubbock County, as marked by the said Jones, as fully shown in said report.

The court further finds that the northeast corner of Garza County and the northwest corner of Kent County is not marked on the ground, but ϕ that said corner should be located on the ground at a point thirty miles east of the J. B. Jones southeast corner of Lubbock County as herein described at a point in the south line of Dickens County, and that said line as so constructed shall be the north boundary line of Garza County and the south boundary line of Crosby County, and said corner when so established shall be the northeast corner of Garza County and the Northwest corner of Kent County - that is to say, in order to mark on the ground said northeast corner of Garza County, and the northwest corner of Kent County the surveyors shall begin at the J. B. Jones southeast corner of Lubbock County as hereinabove described and set forth, and run a straight line eastwardly to the southwest corner of Dickens County and thence follow the south boundary line of Dickens County, if the same be necessary, to a point thirty miles eastward of the J. B. Jones southeast corner of Lubbock County, and the line thus run shall be the south line of Crosby County and the north line of Garza County and the corner as thus marked thirty miles eastward of the J.B. Jones corner shall be the northeast corner of Garza County and the northwest corner of Kent County.

The court further finds that the North boundary line of Terry County, the South boundary line of Hockley County, the North boundary line of Yoakum County and South boundary line of Cochran County, have never been marked or established on the ground, and the court is of the opinion that the proper method of surveying the north boundary line of Terry County, the South boundary line of Hockley County, the North boundary line of Yoakum, and the South boundary line of Cochran County is to begin at the J. B. Jones Southwest corner of Lubbock County, as hereinabove described and run said line on a due west course from said point on the parallel to its point of intersection with the boundary line between the State of Texas and New Mexico, and that the Northwest corner of Terry County, the Southwest corner of Hockley, the Southeast corner of Cochran and the Northeast corner of Yoakum County is a common corner and should be fixed at a point in said line so projecting as aforesaid thirty miles West of the J. B. Jones southwest corner of Lubbock County, and said line when so marked shall be the North boundary line of Terry County, the South boundary line of Hockley County, the North boundary line of Yoakum County, and the South boundary line of Cochran County, and the corner so established in said line at a point thirty miles west of the J. B. Jones Southwest corner of Lubbock County, shall be the Northwest corner of Terry County, the Southwest corner of Hockley County, the Northeast corner of Yoakum County, and the Southeast corner of Cochran County.

The Court ~~is~~ is further of the opinion and finds that the boundary line between Kent County and Garza County is a straight line running true North and South, having for its north end the corner as hereinabove described, to be marked and established on the ground in the manner as herein adjudged thirty miles eastward of the J. B. Jones southeast

corner of Lubbock County, and extending due south on the meridian to the north boundary line of Scurry County; that the boundary line between Lynn County and Garza County is a straight line extending ~~due~~^{due} North and South, having for its north end the J. B. Jones southeast corner of Lubbock County as hereinabove described, and extends due south on the meridian to the north boundary line of Borden County; that the boundary line between Lynn County and Terry County is a straight line extending due north and south, having for its north end the J. B. Jones southwest corner of Lubbock County as hereinabove described and extending due south on the meridian to the north boundary line of Dawson County; that the boundary line between Terry County and Yoakum County is not marked on the ground but its true location is a straight line extending due north and south, having for its North end the common corner of Terry, Yoakum, Hockley and Cochran Counties, as heretofore adjudged herein, and from said point extending due south on the meridian to the north boundary line of Gaines County.

That the boundary line between Hockley County and Cochran County is not marked or established on the ground, but is a straight line extending due north and south, having for its south end the common corner of Terry, Yoakum, Hockley and Cochran Counties as heretofore adjudged herein, and from said point extending northward to the southeast corner of Bailey County and the southwest corner of Lamb County.

* * *

It is therefore ordered, adjudged and decreed by the court that the true and correct southeast corner of Lubbock County, southwest corner of Crosby County, northeast corner of Lynn County and northwest corner of Garza County is located, marked and described on the ground as follows:

A large stone 4 x 12 x 20 inches set in ground and marked on the northside SEC LCo and SWCC Co, and on the south side NEC Ly Co, and NWC Gar Co, an earth mound built around said stone 2 ft. high, pits N, S, E and W 2 x 2 ft. 12 in. deep, also four stones set in the ground N, E, S and W at about 6 varas, which said large stone was placed by J. B. Jones who surveyed the east and south lines of Lubbock County in the year 1892, and made a report thereof to the Commissioners Court of Lubbock County, Texas, said report bearing date of May 12, to 28, 1892, and filed for record June 30, 1892, and recorded on pages 148 to 172 of Vol. 7 of the Deed Records of Lubbock County.

It is further ordered, adjudged and decreed by the court that the boundary line between Lubbock and Crosby Counties is the line as surveyed and marked on the ground by J. B. Jones in the year 1892, having for its south end the large stone last above mentioned, known as the Jones southeast corner of Lubbock County.

It is further ordered, adjudged and decreed by the court that the common south boundary line of Lubbock County and the north boundary line of Lynn County is marked and designated on the ground as the J. B. Jones line which he surveyed and marked in the year 1892, having for its east end the Jones southeast corner of Lubbock County as above described, and extends westwardly from said Jones southeast corner of Lubbock County as shown by his said report bearing date of 12th to 28th days of May, 1892, having for its west end the corner which is described in said report as follows:

An earth mound 2 ft. high built over a stone 5 x 16 x 20 inches set in ground and marked on the west side SEC H Co and NEC T Co, and on each side SWC L Co and

NWC L Co pits N S E and W 2 x 2 ft. 12 ins. deep, said corner is north of a basin about 500 vrs, and that said corner is the common corner of Lubbock, Lynn, Terry and Hockley Counties.

It is further ordered, adjudged and decreed by the court that the west line of Lubbock County and the east line of Hockley County is established and marked on the ground and is known as the J. B. Jones line surveyed in the year 1892 and extends northward as marked by him and as shown in said report from the said common south corner of Lubbock and Hockley Counties, and as above described, and ending at the southwest corner of Hale County and the northwest corner of Lubbock County, as marked by the said Jones, as fully shown in his said report.

It is further ordered, adjudged and decreed by the court that the north boundary line of Garza County and the south boundary line of Crosby County is a straight line extending eastward from the J. B. Jones southeast corner of Lubbock County as hereinabove described to the southwest corner of Dickens County; and that the northeast corner of Garza County and the northwest corner of Kent County is at a point thirty miles eastward of the J. B. Jones southeast corner of Lubbock County at a point in the south boundary line of Dickens County; that is to say, the northeast corner of Garza County and the northwest corner of Kent County shall be marked on the ground at a point in the south boundary line of Dickens County thirty miles eastward of the J. B. Jones southeast corner of Lubbock County in the manner as hereinabove provided; and the east line of Garza County and the west ~~line~~ line of Kent County shall have for its north end the common corner as so established, and from said point shall extend due south on the meridian to the north line of

Scurry County.

It is further ordered, adjudged and decreed by the court that the east boundary line of Lynn County and the west boundary line of Garza County shall have for its north end the J. B. Jones southeast corner of Lubbock County as hereinabove described, and from said point shall extend due south on the meridian to the north line of Borden County.

It is further ordered, adjudged and decreed by the court that the west boundary line of Lynn County and the east boundary line of Terry County shall have for its north end J. B. Jones southwest corner of Lubbock County as hereinabove described, and from said corner shall extend due south on the meridian to the north line of Dawson County.

It is further ordered, adjudged and decreed by the Court that the north boundary line of Terry and Yoakum Counties and the south boundary line of Hockley and Cochran Counties shall be a line beginning at the J. B. Jones southwest corner of Lubbock County as hereinabove described and from said point shall extend a true West course on the parallel to the point where said line intersects the boundary line between the State of Texas and New Mexico, that is to say, said line shall be marked on the ground by beginning at the J. B. Jones southwest corner of Lubbock County, Texas, as hereinabove set out, and from said point shall run a true West course to a point where it intersects the boundary line between the State of Texas and the State of New Mexico, which said line shall be the North boundary line of Terry and the South boundary line of Hockley County, and the North boundary line of Yoakum and South boundary line of Cochran County.

It is further ordered, adjudged and decreed by

the court that the northwest corner of Terry County, the northeast corner of Yoakum County, the southwest corner of Hockley County and the southeast corner of Cochran County is a common corner and shall be fixed in the aforesaid line as established in the preceding paragraph of this judgment at a point thirty miles west of the J. B. Jones southwest corner of Lubbock County.

It is further ordered, adjudged and decreed by the court that the west boundary line of Terry County and the east boundary line of Yoakum County is a straight line extending due North and south, and having for its north end the common corner of Terry, Yoakum, Hockley and Cochran Counties as heretofore adjudged, and from said point extending due southward on the meridian to the north line of Gaines County.

It is further ordered, adjudged and decreed by the court that the west boundary line of Hockley county and the east boundary line of Cochran County is a straight line extending south and north, having for its southern end the common corner of Hockley, Cochran, Yoakum and Terry Counties as heretofore adjudged, and from said point extending due north on the meridian to the southwest corner of Lamb County and the southeast corner of Bailey County.

It is further ordered, adjudged and decreed by the court that each of the parties hereto pay the respective costs incurred by it herein, Except costs of surveying, which is not intitled to be taxed as cost, - that is to say, each county is hereby adjudged to pay the costs incurred by it in this litigation, and the Commissioners Courts of the respective Counties to this suit are here and now adjudged and required to settle and pay to the Clerk of this Court the amounts of costs by them owing upon notice from said Clerk of the respective amounts thereof.

It is further ordered, adjudged and decreed by the court that all relief prayed for by any party to this suit and not hereinabove granted be and the same is here and now denied.

To which action of the court in rendering the aforegoing judgment Garza County and Lynn Co. Texas, then and there in open court excepted and gave notice of appeal to the Court of Civil Appeals for the Eleventh Supreme Judicial District of Texas, at Eastland, and upon motion said County is hereby granted eighty days after the adjournment of this term of court within which to file bills of exceptions and statement of facts.

W. R. Chapman
Judge Presiding.

** ** *

B¹⁰

THE STATE OF TEXAS

COUNTY OF TAYLOR

I, Belle Wellborn, Clerk of
the District Courts of Taylor County, Texas,
do hereby certify that the foregoing is a true
and correct copy of the Judgment of the Court
in Cause No. 196-B, styled Garza County Vs.
Lynn County, as same appears of record in Vol.
A, page 677, Civil Minutes of the 104th District
Court.

Given under my hand and
official seal at office in Abilene, Texas, this
the 22nd day of December, A. D. 1930.

Belle Wellborn
District Clerk Taylor
County, Texas.
By Gola McKee Deputy.



We recommend that the judgment of the Court of Civil Appeals be
reversed and that the judgment of the trial court be in all respects
affirmed.

(Signed) JOHN H. SHARP

JUDGE

JHS-mm

Judgment of the Court of Civil Appeals reversed, and that of the
District Court affirmed.

(Signed) C.M. CURETON

Chief Justice

March 15, 1933

No. 196- B.

In the 104th District Court

Taylor County, Texas

GARZA COUNTY

VS

LYNN COUNTY

· Certified Copy of Judgment

enter 56721

B 11



840

LUBBOCK COUNTY

LUBBOCK, TEXAS

June 16th, 1934.

Hon. J.H. Walker, Commissioner GLO
Austin, Texas.

Lynn-Garza County Line

Dear Sir:-

Hereto is my report on the survey of the Lynn-Garza County boundary line which has been approved by the respective County Courts, and also certificates required by Law.

If there are any other and further information needed, kindly write me.

I am sending this registered mail so that I will have immediate evidence that it is on file with your office.

Yours very truly,

A. L. Darni

RECEIVED

JUN 20 1934

REFERRED TO MAP



1014

LUBBOCK COUNTY

LUBBOCK, TEXAS

July 16th, 1934.

Hon. J.H. Walker, Commissioner GLO

Austin, Texas.

Lynn Garza County Line

(also Hockley-Terry)

Dear Sir:-

Replying to your letter of the 7th, inst, regarding county line surveys-

Lynn-Garza Line: the base maps for these lines are first made up and then used in the field for checking and in the case of section #1252 which was found to be in excess of a mile, the scale appears out of check, the passing calls takes care of the apparant discrepancy as to scale. The distance west in mile 11 to section line is 282.6, the text got the figures transposed.

Hockley-Terry Line- Mile 12 calls for crossing lines should be 8 and 7 instead of 6 and 7 as shown on the test, scale out of balance as above stated; south to section line is 567 instead of 657, figures transposed in the text. Mile fourteen should read beginning at mile thirteen; notes mile 29 south 156.5 to NE corner section and Blk K. Mile 30 SW corner of section 1 corrected by Ragsdale, based on other markings than the original corner is 157 0 and 147 West of County corner.

Yours very truly,

*Corrections applied,
Blucher*

A. L. Dennis

File this with Lynn-Garza Co. Line Report.

RECEIVED

JUL 18 1934

REFERRED TO MAP

Nov. 30, 1934

Mr. A. L. Harris,
Lubbock, Texas

Lynn Garza County Line

Dear Sir:

This is to advise that your field notes and report of the Lynn-Garza county line were received and filed on June 20, 1934.

I find that further information from you is desired in connection with the field notes. The details of connection to the North county line of Borden county are not given.

Mr W D Twichell, in his field notes of sections 13 and 14 blk 10 ELARR Ry Co in Borden county, gives connection to this county line and to mile post #23 thereon. It would seem that the county line called for is the W. S. McClung line, as McClung completed his survey on May 12, 1908. What I desire is information for record here showing how the McClung line was identified, as well as its bearing relative to the bearing of the Lynn-Garza, and the distance to a mile post on the Borden county line, if you have that data.

There is no copy of court order on file here as yet showing approval by Borden county court of your SE corner of Lynn county; otherwise, the field notes and report appear correct and may be used for correcting abstracts when the information requested above is received.

A copy of this letter is being sent to Judge Pearce for his information.

Very truly yours,

Acting Commissioner

Blucher:eb
cc: Judge L.A. Pearce,
Gail, Texas



LUBBOCK COUNTY

LUBBOCK, TEXAS

Dec. 12th, 1934.

Hon. J.H. Walker, Commissioner GLO,
Austin, Texas.

Lynn-Garza Boundary line survey.

Dear Sir:-

In reply to your letter of Nov. 30th, relative to the above matter, wish to report further that prior to the time that I did this work on the ground I made a special trip to Gail and inspected the records carefully and checked the W.S. McClung north line of Borden County, and secured the original tracing on file there and brought it to Lubbock and made a blue print of it, which I have before now.

My notations show that there were very few, if any, definite ties to sections as they are now laid out on the ground; my notations on section 13 Block 10 gives a call of 29 vs for the county line, south from its NW corner; Twichell places the cap rock as 1500 vs east of the NW corner of 13, he evidently checked the rim rock, as the cap or top of the hill is practically 400 vs farther west; McClung by scale places the cap rock approximately 100 vs west of the NE corner of 13, and his mile 22 approximately 925 vs east of the NW corner of 13; we searched that location but found several rocks but none marked for identification so I gave up the search and from the notation for the passing on the west line set the marker for corner as best I could determine approximately 29 vs over into section 13, the fence line may mark the survey line, but I found a stone 2 vs north of fence line that is most likely the corner as placed by Twichell for the west corner of sections 12 and 13.

I feel reasonably sure that this marker is directly in, or very near the actual line as laid down by McClung.

I most heartily concur in your views as stated in your letter to me dated Dec. 15th, -33 quote "As to the manner of marking the county lines, it is to be regretted that counties do not appreciate the necessity of placing a sufficient number of permanent monuments on their lines to obviate such costly controversies as the recent Lynn-Garza case."

Trusting this report will be satisfactory to all concerned, I am,
Yours very truly,

CC Judge L. A. Pearce,
Gail, Texas.

A. L. Harris
RECEIVED

*Wrote Judge Pearce on 12/20/34
CC to A. L. Harris.*

DEC 15 1934

REFERRED TO MAP



General Land Office

State of Texas

Austin

J. H. WALKER, COMMISSIONER
S. S. SAYERS, CHIEF CLERK

Dec. 20, 1934

*OK.
12/20/34*

Lynn-Garza County Line

Judge L. A. Pearce,
Gail, Texas

Dear Sir:

Under date of November 30th this year I sent you a carbon copy of a letter addressed to Mr A. L. Harris at Lubbock, Texas in reference to survey and report by him of the Lynn-Garza boundary line. You will note that I stated in that letter that there was no showing made here, indicating approval by the Borden county court of the SE corner of Lynn county, as established by Mr Harris.

Today, I am in receipt of a letter from Mr Harris dated December 12th., referring to my above mentioned letter to him. I note he sent you a copy of his letter.

May I request that you let me hear from you in reference to any action which your county court may have taken relative to approval of Mr Harris' position of the SE corner of Lynn county? In order that the record here may be clear, this information is desired.

I trust that you will give the matter your prompt attention, as I desire to pass finally on Mr Harris' report and field notes for this Lynn-Garza boundary line.

Very truly yours,

Commissioner

Blucher:eb
cc: Mr A L Harris,
Lubbock.

948

L. A. PEARCE
COUNTY JUDGE AND COUNTY SUPERINTENDENT
GAIL, TEXAS

Dec. 27th 1934.

Hon. J. H. Walker Land Com.
Austin, Texas.

LB 1913
488

Dear Sir:- Lynn-Garza County Line

Your letter to hand relating the approval of Mr. A. L. Harris survey Garza & Lynn Co. lines. Borden Co. had W. S. Mc Clung make a location of Borden Co. lines and I understood they were approved by The Land Com. Dept. so I do not see where the Court would have any authority to approve a survey made by Mr. Harris if same conflicted with The Mc Clung survey.

Please give me your opinion in this matter, as We would like to accomidate the Counties mentioned if it was the proper thing to do,

With kindest regards,

I am, yours very truly,

L. A. Pearce

L. A. Pearce
Co. Judge
Borden Co.

RECEIVED

DEC 29 1934

REFERRED TO MAP

*Write 12/31/34
C. A. Adams
B*



General Land Office

State of Texas

Austin

J. H. WALKER, COMMISSIONER
S. S. SAYERS, CHIEF CLERK

Dec. 31, 1934

Lynn-Garza County Line

Judge L. A. Pearce,
Gail, Texas

Dear Sir:

This acknowledges receipt of your letter of December 27th referring to mine to you in reference to the approval by Borden county of the survey by A. L. Harris of the Garza-Lynn county line.

It would appear from Mr Harris' report that he has established the South corner of the Lynn-Garza county line about as correctly as can be expected on the old W. S. McClung North line of Borden county. I have thought it well, however, to write you, in order that you may be advised in the premises.

The field notes by Mr Harris were filed under the date they were received. Unless objection is raised by your county, the lands along this line will be abstracted according to the positions given the county line by Mr Harris.

Very truly yours,

Commissioner

Blucher:eb
cc: Mr Harris,
Lubbock.



THE STATE OF TEXAS

COUNTY OF GARZA

2786

POST, TEXAS

June 13 1935

General Land Office
Austin Texas

Mr J H Walker:

I would like to get some information about the Garza county on the south it touches Scurry Co. and Borden Co. . We do not have any field notes on this line, could you send me field notes on this line., tell me how I could work it out . I am trying to check up on the line.

We have a new map drawn by a fellow here , but he just presumed that it was a straight line from the South West corner to the South East corner. These two corners were established by Mr A L Harris in his recent county line ~~survey~~ survey. There seems to be some land between this line and the old line that should be in this county. How ever this line may not be straight and just follows the abstacks .

I would appreciate any help you can give me on this.

Very truly yours

W F Cato Assessor

By *W F Cato Jr* Deputy

RECEIVED

JUN 15 1935

REFERRED TO MAP

June 18, 1935

Mr. W. F. Cato,
County Assessor,
Post, Texas

Dear Sir:

This acknowledges receipt of your letter of June 13th asking about the South line of Garza county.

For your information I shall state that there are no field notes on file in this office for the South line of Garza county, which have been made at the instance of that county; the only field notes which are on file are those of the North line of Borden county, the survey having been made by W S McClung and finished on May 12, 1908.

Mr A L Harris not long ago filed field notes in this office for the Lynn-Garza and Garza-Kent county lines. In connection with the Lynn-Garza county line will state that I wrote Mr Harris on November 30, 1934, a carbon copy of the letter being sent to Judge L A Pearce at Gale. I also wrote Judge Pearce on December 20th and 31st in connection with this matter. I refer you to him for that correspondence, which no doubt will make the matter clear to you.

I stated to him in my most recent letter that if his county raised no objection to the position given to the Southern terminus of the Lynn-Garza line, that the lands along that line would be abstracted according to Mr Harris' field notes and report. I had a reply from Judge Pearce under date of December 27th and wrote him on December 31st.

The matter of determining county lines is one which the counties affected must decide. This office will assist in every way possible; but under the law it can not undertake to determine those lines, unless the counties themselves can not agree and refer the matter to this department for attention.

Mr Harris wrote this department on December 12, 1934 in connection with this matter and it would seem from what he says that he determined the SW corner of Garza county as well as he could from information available. I do not know how this will agree with the old McClung line, as from what Mr Harris says it would appear that the old markers could not be found.

In his report on the Garza-Kent county line, Mr Harris states that at 997.6 varas pass the end of the 29th mile, he set a concrete marker in a fence line for county corner in the North line of Scurry county, as marked for Kent county by surveyors Hardin and Camp and recorded in Kent county. Other than the above I have no definite information that I can give you.

I do not see, however, how you can abstract the lands along the South county line correctly, unless you have the position of that line properly determined.

Another thing, I do not know that the North line of Scurry county and the North line of Borden county are one and the same continuous straight line. It is possible that there may be a deflection to the North or South when running West from the NW corner of Scurry county. Those are details which must be established by a survey on the ground.

If I can be of assistance to you in any way in this matter in the future, please feel free to call on me for any suggestions which I may be able to give.

Very truly yours,

Commissioner

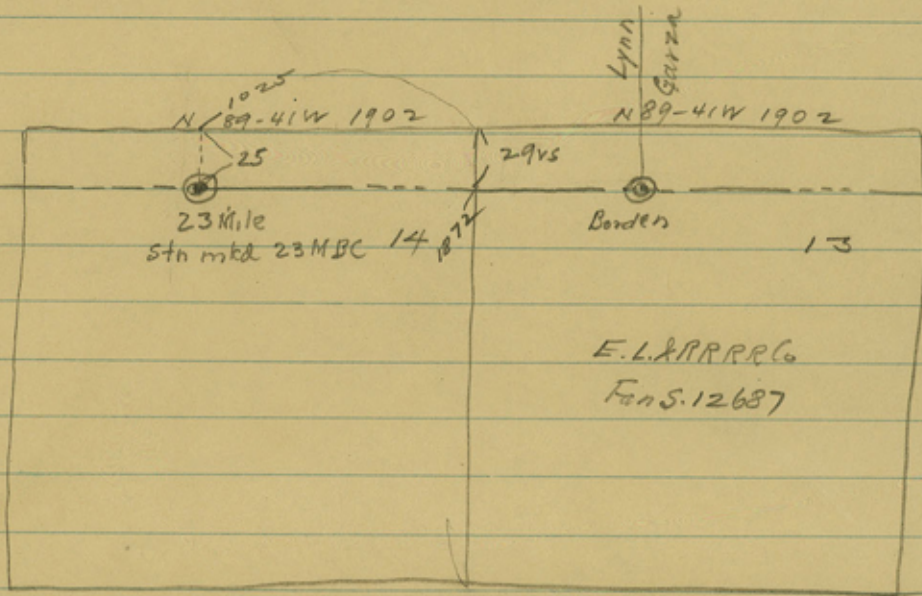
Blucher:eb

Lynn Gaza Co. Line

Recent calls for line to run from Jones 55 Co. Lubbock Co & run due south on a meridian to Borden County

County Line F/N North Line of Borden, by W.S. McClung Borden Co Surveyor, dated as being completed May 12th 1908

W.D. Twichell's F/N of Dec 13+14 Bk 10, Act 703, E.L. & P.P. RR Co show N. line of Borden as follows



These Lynn Gaza F/N do not give sufficient information to check with the Borden Co. Line.

Does Borden County agree to above.

Connection to M.P. on Borden Co desired

Ultimate OK.

10/19/34
Blucher

THE STATE OF TEXAS | In the County Court of Garza
 *
COUNTY OF Garza | County, Texas, April Term, A.D. 1934.

In The Matter of Establishing the Garza and
Lynn County Boundary Line.

This the 11th day of June A.D. 1934, came on to
be considered the report, consisting of typewritten field notes
and blue print map of A.L. Harris, Surveyor, who heretofore
having been duly and jointly employed by said Counties to survey
and mark said boundary line, and the court having examined the
same, it is ordered by the court that said report be and is
hereby in all respects approved, and said report has been duly
filed for record in duplicate with the County Clerk of said
county.

W. L. Brown
County Judge Garza County, TEXAS.

The STATE OF TEXAS |
 *
COUNTY OF Garza | I, J. Lee Bowen, Clerk of the
County court of said county, do hereby certify that the above an-
foregoing instrument in writing is a full, true and correct copy
of an order of the County Court of said County, approving the
report of A.L. Harris, Surveyor, in the matter of establishing
the true boundary line between Garza County and Lynn
County: as same was filed for record the 11th day of June
A.D. 1934, and recorded in Vol. 31 Minutes of County Court
Court of said county, and also remain on file in my office among
the papers of said report.

Witness my hand and seal of office, in Post City Texas,
this the 11th day of June A.D. 1934.

J. Lee Bowen
Clerk County Court of Garza
County, Texas.

(seal)

S. L. O.

THE STATE OF TEXAS (In the County Court of Lynn
COUNTY OF Lynn (County, Texas, April Term, A.D. 1934 .

In The Matter of Establishing the Lynn and
Garza County Boundary Line.

This the 25th day of May A.D. 1934, came on to
be considered the report, consisting of typewritten field notes
and blue print map of A.L. Harris, Surveyor, who heretofore
having been duly and jointly employed by said Counties to survey
and mark said boundary line, and the court having examined the
same, it is ordered by the court that said report be and is
hereby in all respects approved, and said report has been duly
filed for record in duplicate with the County Clerk of said
county.

W.E. Smith

County Judge Lynn County, Te

The STATE OF TEXAS (I, H.E. Story, Clerk of the
COUNTY OF Lynn (County court of said county, do hereby certify that the above and
foregoing instrument in writing is a full, true and correct copy
of an order of the County Court of said County, approving the
report of A.L. Harris, Surveyor, in the matter of establishing
the true boundary line between Lynn County and Garza
County: as same was filed for record the 25th day of May
A.D. 1934, and recorded in Vol. 2 p. Minutes of County
Court of said county, and also remain on file in my office among
the papers of said report.

Witness my hand and seal of office, in Tahoka Texas,
this the 25th day of May A.D. 1934.

H. E. Story
Clerk County Court of Lynn
County, Texas.

(seal)

In the Matter of permanently establishing the County Boundary line between Lynn and Garza Counties;

Having been jointly employed by Lynn and Garza Counties to survey and mark and make returns thereto the the County Courts of said Counties, said line to be run in strict accordance with the decree in the case Garza VS Lynn County, I did by a careful observation on Polaris, set off the true south course from the J.B.Jones SE corner of Lubbock County, which was plainly marked as originally placed on the ground, and which has been well known to me for the past 18 years. I checked my observed course with USGS bearings on station POOL, which is in view from said corner, also with long bearings on wind mills taken by H.G. Guinn, former Lubbock County Surveyor, and all checked correctly with my course.

In my recent resurvey of the Lubbock-Lynn line I placed an A concrete marker in the Original Jones corner, this marker, as the attached blue print of concrete markers used, is 2x2 feet at bottom, 1x1 foot at top and six feet tall set approximately half into the ground, and marked for the four counties.

Mile 1:

See AL Harris letter dated 1-21-35 with Garza-Grosby line referring to connection to E. line Sec. 9 Blk 24.

Beginning mile one at the original J.B.Jones SE corner of Lubbock County which is in section 9 Block 24, 123.5 vs, west of its east line and 825 varas north of its SE corner;

Thence South at 824.5 vs, cross fence line, set 2 inch pipe under fence, at 1900.8 vs, end of mile one, in a field.

Mile 2:

Beginning mile two at the end of mile one, thence south at 825 vs. cross south line section 10, the north line section 1271 at a point 104.6 vs. west of their east common corners, at 1082 vs, north line of Santa Fe railway, at 1108.5 vs. center line of railway track, at 1135.5 vs, south line of railway and C concrete marker, at 1166 vs, south line of roadway, at 1775 vs. east-west fence line in all 1900.8 vs. to end of mile two, in a field.

Mile 3;

Beginning mile three at the end of mile two, thence south at 726 vs. B concrete marker set in north line of State Highway, at 776 vs. south line of Highway, at 825 vs. center line of east-west roadway and the south line of section 1271 the north line of section 1264 at a point 90.5 vs, west of their east common corners, in all 1900.8 vs, to the end of mile three, in a field;

Mile 4;

Beginning mile four at the end of mile three, thence south at 818.2 vs. set C concrete marker under north fence line of east-west lane, at 826 vs. center line of said lane, section corner is east 84.5 vs, in all 1900.8 vs. end of mile four, in field;

Mile 5;

Beginning mile five at the end of mile four, thence south at 332 vs. cross fence, at 818.2 vs. C concrete marker set under north fence line of lane, at 825.5 vs. center line of east-west lane, at 1775 cross fence line, at 1900.8 vs. the end of mile five, in a field.

Mile 6:

Beginning mile six at the end of mile five, thence south at 823 vs. C concrete marker set under north fence line of lane, at 829.5 vs. center of east-west roadway, at 1775.7 vs, cross fence line, in all 1900.8 vs. to the end of mile six, in a field.

Mile 7;

Beginning mile seven at the end of mile six, thence south at 816.8 vs C concrete marker set under north fence line of ~~lane~~ lane, at 826 vs. center line of east-west roadway, at 1775 vs, cross fence line, at 1900.8 vs. the end of mile seven, in a field.

Mile 8;

Beginning mile eight at the end of mile seven, thence south at 823.5 vs, center line of east-west roadway, Hackberry school house is north about 200 feet, at 835 vs. set C concrete marker in south fence line of lane, at 1632 vs. cross fence line, at 1900.8 vs, the end of mile eight, in a field.

Mile 9;

Beginning mile nine at the end of mile eight, thence south at 938.4 vs center line of east-west roadway and the south line of section 1252, at a point 54 vs, west of its SE corner, and in the north line of section 1421 at a point 271 varas east of its NW corner, at 950 vs. C concrete marker set in the south fence line of roadway, in all 1900.8 vs. to the end of mile nine, in a field.

Mile 10;

Beginning mile ten at the end of mile nine, thence south at 1047.5 vs center line of east-west graded roadway, the south line of section 1421 and the north line section 1420, at a point 276.8 varas east of their west corner, at 1054.8 vs, C concrete marker in south fence line of lane, in all 1900.8 vs. to the end of mile ten, in a field.

Mile 11;

Beginning mile eleven at the end of mile ten, thence south at 1156.5 vs center line of east-west roadway, the south line of section 1420 the north line of section 1419 at a point ~~286.2~~ 282.6 vs. east of their west corners, at 1163.7 vs, C concrete marker set in the south fence line of lane, in all 1900.8 vs, to the end of mile eleven, in a field.

→ 282.6 vs. (see letter recd. 7/18/34, herewith)

Mile 12;

Beginning mile twelve at the end of mile eleven, thence south at 1219 vs. C concrete marker under north fence line of lane, at 1226.5 vs. center line of east-west roadway, the south line of section 1419 the north line of section 1405, at a point 288.4 vs, east of their west corners, in all 1900.8 vs. to the end of mile twelve, in a field.

Mile 13;

Beginning mile thirteen at the end of mile twelve, thence south at 1279 vs, C concrete marker set under north fence line of lane, at 1286.5 vs center line of lane, the south line of section 1405 and the north line of section 1406 at a point 294.2 vs. east of their west corners, at 1900.8 vs. the end of mile 13, in a field.

Mile 14;

Beginning mile fourteen at the end of mile thirteen, thence south at 1336 vs. C concrete marker set in north fence line of lane, at 1343.5 vs center line of east-west roadway, the south line of section 1406 the north line of section 1374 at a point 300 vs. east of their west corner, at 1900.8 vs the end of mile fourteen, in a field;

Mile 15;

Beginning mile fifteen at the end of mile fourteen, thence south at 1394.5 vs B concrete marker set in the north line of east-west State Highway, at 1413 vs center line of highway, the south line of section 1374 and the north line of section 1321, at a point 299 vs. east of their west corner, at 1900.8 vs. the end of mile fifteen, in a field.

Mile 16;

Beginning mile sixteen at the end of mile fifteen, thence south at 1485.5 vs, center line of east-west graded roadway, the south line of sect. 1321 and the north line of section 1323 at a point 310.6 vs. east of their west corner, in all 1900.8 vs. to the end of mile sixteen, in a field.

Mile 17;

Beginning mile seventeen, at the end of mile sixteen, thence south at
cont. (Page 2) Lynn-Garza line.

Mile 17 (cont)

1550 vs. center line of east-west roadway, the south line of section 1323 and the north line of section 1324, 319.2 varas east of their west corner, at 1558 vs. C concrete marker set in south fence line of lane, in all 1900.8 vs. to the end of mile seventeen, in a field.

Mile 18;

Beginning mile eighteen at the end of mile seventeen, thence south at 1593 C concrete marker set under north fence line of lane, at 1601 vs. center of east-west roadway, at a point in the south line of section 1324 and the north line of section 404, at a point 327.8 vs, east of their west corner, in all 1900.8 vs, to the end of mile eighteen, in a field.

Mile 19;

Beginning mile nineteen at the end of mile eighteen, thence south at 1634 vs, C concrete marker set under north fence line of lane, at 1641 vs. center line of east-west roadway, in the south line of section 404 and the north line section 406 at a point 336.5 vs. east of their west corner, in all 1900.8 vs, to the end of mile nineteen, in a field.

Mile 20;

Beginning mile twenty at the end of mile nineteen, thence south at 1696 vs. fence line and the south line section 406, the north line of section 1359, 345 vs. east of their west corner, and C concrete marker, at 1900.8 vs, the end of mile twenty, in prairie;

Mile 21;

Beginning mile twenty-one at the end of mile twenty, thence south at 1700 vs. the south line of section 1359 the north line of section 1360 at a point 353.6 vs, east of their west corner, and in a deed canyon, at 1900.8 vs, the end of mile twenty-one, in a deep canyon.

Mile 22;

Beginning mile twenty-two at the end of mile twenty-one, thence south at 197 vs, C concrete marker on high bluff top, at 220 vs, down deep bluff the north bank of Moore's draw canyon, at 1705 vs, cross the south line of section 1360, the north line of section 276, at a point ~~427~~³²⁷ vs, east of their west corner, in all 1900.8 vs, to the end of mile twenty-two, in very rough breaks, along this mile.

Mile 23;

Beginning mile twenty-three at the end of mile twenty-two, thence south at 1708 vs. the south line of section 276, the north line of section 275, at a point ~~2~~ 427 vs, east of their west corner, in all 1900.8 vs. to the end of mile twenty-three, on the west slope of Dead Nigger Draw;

Mile 24;

Beginning mile twenty-four at the end of mile twenty-three, thence south at 24 vs. C concrete marker on the edge of the plains, at 1708 vs. fence line, and C concrete marker, the south line of section 275 and the north line of section 392, at a point 438.5 vs, east of their west corner, in all 1900.8 vs, to the end of mile twenty-four, in Nigger draw;

Mile 25;

Beginning mile twenty-five at the end of mile twenty-four thence south at 1710 vs. C concrete marker in the south line of section 392, the north line section ~~400~~⁴⁰³ at a point 449.3 vs, east of their west corner, in all 1900.8 vs, to the end of mile twenty-five, in prairie.

(P #3) Lynn-Garza line.

Mile 26th.

Beginning mile twenty-six at the end of mile twenty-five, thence south at 1711 vs. the south line of section 391, the north line of section 400, at a point 459.2 vs. east of their west corner, and C concrete marker, in all 1900.8 vs, to the end of mile twenty-six, in prairie.

Mile 27;

Beginning mile twenty-seven at the end of mile twenty-six, thence south at 1711 vs, the south line of section 400, the north line of section 397, at a point 470.6 vs. east of their west corner, concrete marker, in all 1900.8 vs, to the end of mile twenty-seven, in prairie.

Mile 28;

Beginning mile twenty-eight at the end of mile twenty-seven, thence south at 1712 vs, the south line of section 397, the north line of section 1, C concrete marker, at a point that is 482 vs. east of their west corner, in all 1900.8 vs, to the end of mile twenty-eight, in prairie.

Mile 29;

Beginning mile twenty-nine at the end of mile twenty-eight, thence south at 762 vs, C concrete marker in east-west fence line, at 1713 vs. C concrete marker in the south line of section 1, the north line of section 12, at a point 493.5 vs, east of their west corner, at 1900.8 vs, end of mile twenty-nine, in prairie.

Mile 30;

Beginning mile thirty at the end of mile twenty-nine, thence south at 1714 vs, fence line, the south line of section 12 the north line of section 13, at a point 505 vs, east of their west corners, at 1741 vs, A concrete marker set in prairie lake, and in the north line of Borden County, as shown of record in Borden County, the SE corner of Lynn County, The SW corner of Garza County, county names marked on county corner plate.

*Received and filed in General
Land Office on June 20th, 1934.*

*J. H. Walker
Commissioner
C. F. Blumberg
Clerk.*

ACREAGE DIVISION- Garza-Lynn County Boundary Line.

| Sec.No. | Part | Block | Cert. | File | T.Ac. | Lynn Co. Abst. | Ac. | Garza Co. Abst. | Ac. |
|---------|---------|------------|---------|---------|-------------|---------------------|----------------------|--------------------|----------------------|
| 9 | all | 24 | 588 | S13038 | 640 | 1388 | 254.45 | 822 | 17.4 ¹⁸ |
| | | | | | | (Lubbock Co. | | Crosby Co. | |
| | | | | | | 1496 ^{3.8} | 347.95 | 358 | 20.2 |
| 10 | all | 24 | 588 | F62013 | 640 | 1275 | 602.5 | 1006 | 37.5 |
| | S204.5A | | | | | | | | |
| | Nry | | | | | | 180.4 | | 24.1 |
| | S204.5A | | | | | | | | |
| | N.Ry | | | | | | 191.1 | | 13.4 |
| 1271 | all | | 1083 | S11205 | 640 | 276 | 607 ⁶⁰⁷ | 1271 | 32.8 ³³ |
| | N.Ry | | | | 11.1 | | 5.4 | | 5.7 |
| | Ry | | | | 3.5 | | 2.6 | | .9 |
| | SE | | | | | | | | 15.8 |
| 1264 | NE S.Ry | | 174 | F.62014 | 640 | 614 | 610 ⁵ | 1007 | 10.4 |
| | J.H.G. | | | | | | 1/4 | | 29.5 ^a |
| 1263 | all | | S-11218 | Ct.174 | 640 | 1277 | 612.6 | 307 | 27.4 ^{1/2} |
| | NE | | | | | | | | 14. |
| | SE | | | | | | | | 13.4 |
| 1273 | all | E.RR | 328 | S-11921 | 640 | 1276 | 614.6 ^{1/2} | 305 | 25.4 ^{1/2} |
| | NE | | | | | | | | 13. |
| | SE | | | | | | | | 12.4 |
| 1 | all | J.Hays | | S-19243 | 640 | 1279 | 616.6 ^{1/2} | 554 | 23.4 ^{1/2} |
| | NE | | | | | | | | 12. |
| | SE | | | | | | | | 11.4 |
| 1251 | all | AB&M | 1085 | S11206 | 640 | 1272 | 618.6 ^{1/2} | 275 | 21.4 ^{1/2} |
| | NE | | | | | | | | 10.9 |
| | SE | | | | | | | | 10.5 |
| 1252 | all | Bowles | | F-13702 | 676 | 650 | 655.7 ^{1/2} | 617 | 20.3 ^{1/2} |
| | NE | | | | | | | | 10.4 |
| | SE | | | | | | | | 9.9 |
| 1421 | all | 1TTRR | 478 | S-11923 | 750 | | 97.4 ^{1/2} | 347 | 652.6 ^{1/2} |
| | NW | | | | | | 48.4 | | |
| | SW | | | | | | 49. | | |
| 1420 | All | 1 Johnson | | F13718 | 750 | | 99.5 | 684 | 650.5 |
| | NW | 200 | | | | | 49.5 | | |
| | SW | | | | | | 50. | | |
| 1419 | All | 1EL- | 200 | S-11407 | 735 | | 99.6 ^{1/2} | 302 | 635.4 ^{1/2} |
| | NW | | | | | | 49.6 | | |
| | SW | | | | | | 50. | | |
| 1405 | all | 1 | 194 | S-11401 | 731 | | 101.1 | 297 | 630.6 |
| | NW | | | | | | 50.3 | | |
| | SW | | | | | | 50.8 | | |
| 1406 | all | 1 Tally | 194 | F13729 | 730 | | 102.8 ¹⁰³ | 744 | 627.2 |
| | NW | | | | | | 51.2 | | |
| | SW | | | | | | 51.6 | | |
| 1374 | all | M.L.Malone | | F12264 | 734 | | 104.8 ¹⁰⁵ | 706 | 629.2 |
| | NW | | | | | | 52.4 | | |
| | SW | | | | | | 52.4 | | |
| 1321 | all | 1 HOB | 8 | S-11331 | 640 (735.5) | | 107.3 | 322 | 532.7 ⁵³³ |
| | NW | | | | | | 53. | | |
| | SW | | | | | | 54.3 | | |

Lynn-Garza Acreage Division
#2. #1.

#2 Lynn-Garza Acreage Division;

| Sec. | Part | Blk | Cert. | File | T. Ac | Lynn Co. Abst. Ac. | Garza Co. Abst. Ac. |
|------|---------------------|--------|--------|---------|--------------------|---|-----------------------------|
| 1323 | all NW SW | 1 | 10 | S-11332 | 737 | 109.5 54.5 55. | 323 627.5 |
| 1324 | all NW SW | 1 | Miller | F12267 | 728 | ¹¹² 111.7 55.4 56.3 | 700 616.3 |
| 404 | all -NW- -SW- | Rogers | 604 | F12286 | 724 | 114.1 | 721 ⁶¹⁰ 609.9 |
| 406 | All | Rogers | 605 | F12287 | 730 | ¹¹⁸ 117.8 | 726 612.2 |
| 1359 | All | ELRR | 549 | S-12214 | 711 | 120.2 | 306 ⁵⁹¹ 590.8 |
| 1360 | all | Rogers | 549 | F12289 | 711 | 120.5 | 723 590.5 |
| 276 | Dodson | | 1155 | F69113 | 675 | 132.7 ⁵ | 1071 542.3 ⁵ |
| 275 | ELRR | | 1155 | S13980 | 640 | 145.7 ⁵ | 435 494.3 ⁵ |
| 392 | all | 9 | 166 | F12273 | 640 | 150. | 711 490 |
| 391 | all | 9 | 166 | S12617 | 640 | 153.1 | 371 ⁴⁸⁷ 486.9 |
| 400 | all | 9 | 406 | F12274 | 640 | 157-156.2 ⁵ | 710 ⁴⁸³ 482.9 |
| 397 | all | 9 | 408 | S12627 | 640 | 160.3 ⁵ | 367 479.7 ⁵ |
| 1 | all | 10 | 697 | S12681 | 640 | 1456 164.6 | 375 ⁴⁷⁶ 475.9 |
| 12 | all | 10 | 702 | F12272 | 640 | 1461 168 | 709 472 |
| 13 | all | 10 | 703 | S12687 | 640 ^{1/2} | ⁵ 2.4 | 433 ⁵ 5.4 |
| | | | | | | Borden 1523 632.7 ⁵ | |

Lubbock-Lynn-Crosby Garza Corner is in

Long. 101°33' 22.602"
Lat. 33°23' 42.134"

Garza-Lynn Dawson corner is in

Long. 101°33' 22.602"
Lat. 32°57' 46.134"

I, A.L.Harris, Licensed State Land Surveyor, of Lubbock, Texas, do hereby certify that the above and foregoing field notes and acreage division, of the Lynn-Garza Boundary Line as set out in the Supreme Court Decree, are true and correct as surveyed by me on the ground, with the chain carriers aforesaid, duly qualified, and that the lines, marks, and plat attached is truly set forth herein.

Surveyed April-May 1934.
C.T.Burns, Walter Stanley,
Jack McGowan, Chainmen.

A. L. Harris

Licensed State Land Surveyor (Seal)

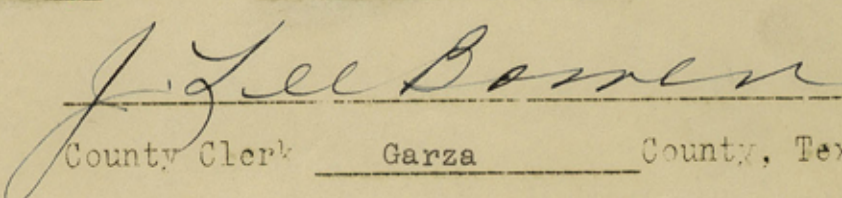
THE STATE OF TEXAS

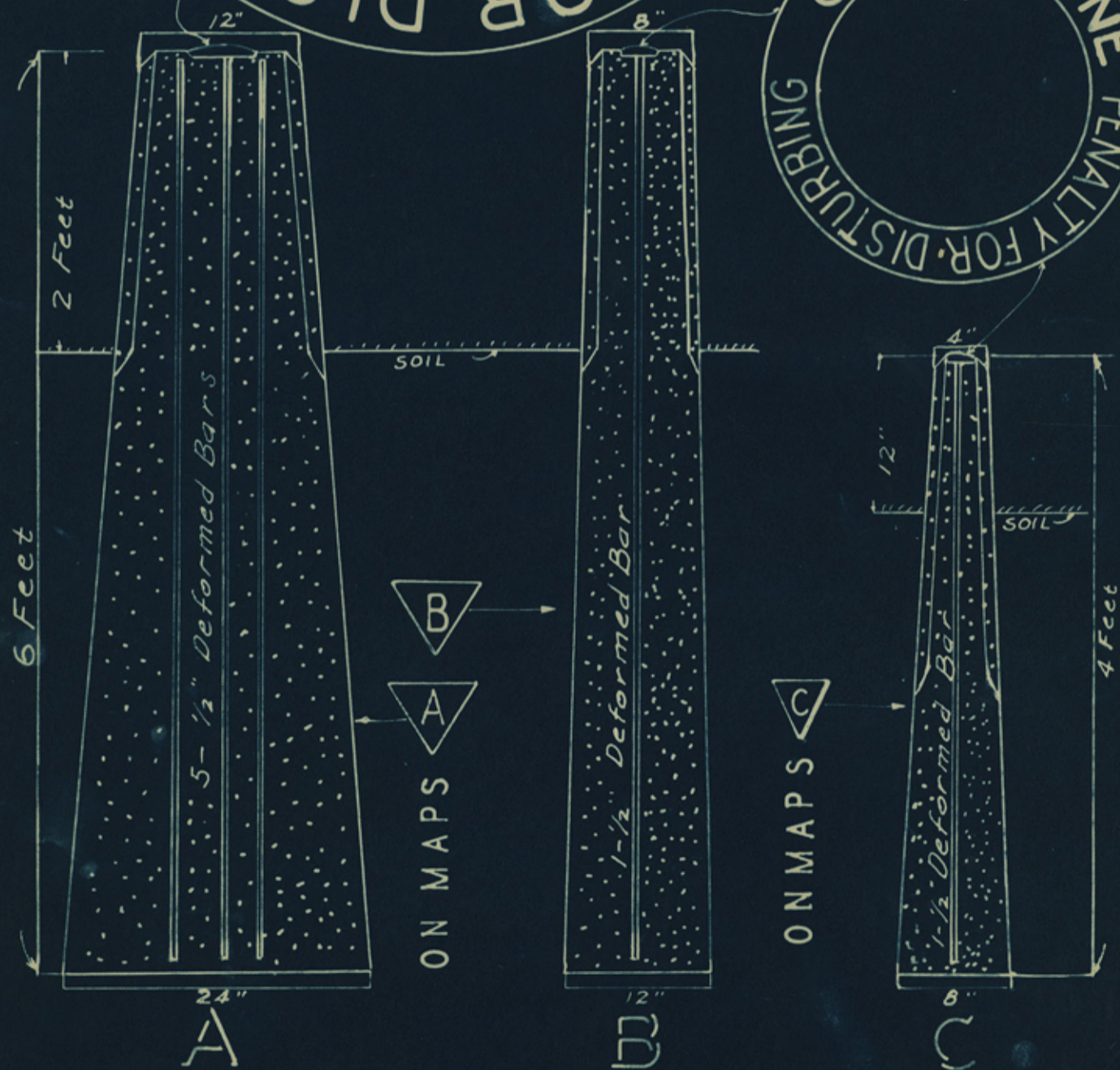
COUNTY OF Garza

I, J. Lee Bowen, County Clerk of Garza

County, Texas, do hereby certify that the foregoing is a true correct copy of a typewritten and blue print map report of A.L.Harris, Surveyor, who was duly authorized to survey and mark the boundary line between Garza County and Lynn County, together with its certificate of authentication, was filed for record in duplicate in my office this the 11th day of June A.D. 1934, and duly recorded the same day in ~~xxxxxxx~~ **County Commissioner's Court Minutes** Volume No. **3** : one copy in the Clerk's Records and one copy in the Surveyors Records

Witness my hand and the official seal, at my office in Post Texas, this the 11th day of June A.D. 1934.


County Clerk Garza County, Texas



CONCRETE COUNTY LINE MARKERS

- A. FOR COUNTY CORNERS, NAMES TO BE SHOWN ON CAP
 - B. AT STATE HIGHWAY CROSSINGS
 - C. MILE END-COUNTY NAMES AND MILE NUMBER SHOWN
- CAPS ACTUAL SIZE

CONCRETE MIX 1-2-3

Order 56743

B33



A. L. HARRIS
LUBBOCK, TEXAS
9-28-33

