

Mr A L Harris
State Surveyor
Lubbock - Texas

Dear Sir:

12/3/34

filed here 11/13/34

In working up ^{now} the boundary line between Lubbock and Lynn counties the abstract clerk has made the following changes, beginning at the East end and running west:

S $\frac{1}{2}$ Section 32, Blk 24, Certificate 671, HE&WTRRCo., Abstract No. Lubbock 1142, and Lynn 1322. According to corrected fieldnotes by Sylvan Sanders, filed here Mch 1, 1924, he shows: 144 $\frac{1}{2}$ acres in Lubbock, and 218 acres in Lynn, total 362 $\frac{1}{2}$ acres; and the former patent was canceled and new patent issued for that amount on March 28, 1924. (Abstract Vol. 47) No change in abstracting. File 88619.

Section 33, Certificate 696, HE&WTRRCo., Abstract No. Lubbock 426, Lynn 603, was patented for 565 acres. I have given Lubbock 343 $\frac{1}{2}$ acres, and Lynn 221 $\frac{1}{2}$ acres. You call for 527.4 acres. Fannin Scr. 13549.

Section 6, Block 20, Certificate 689, HE&WTRRCo., Abstract number Lubbock 1028, Lynn 1448. Patented for 564 acres. I have given Lubbock 318 acres, and Lynn 246 acres. You gave Lubbock 306 $\frac{1}{2}$ acres. File 58951.

Section 12, Block 20, Certificate 686, HE&WTRRCo., Abstract number ^{to 8 1/2} Lubbock 1027 and Lynn 1347. Patented for 320 acres: 150 in Lubbock, 170 Lynn. File 58952. West $\frac{1}{2}$ - Abstract number Lubbock 1475, and Lynn 1344. Patented for 320 acres: 150 Lubbock, 170 Lynn. File 131865. You have given Lynn county 333.6 acres

Section 13, Certificate 685, HE&WTRRCo., Abstract number, Lubbock 416, Lynn 602. Patented for 640 acres. I have given Lubbock 318 acres, and Lynn 322 acres. Fannin Scrip 13936. You gave Lubbock 318.3 acres, and Lynn 324.7 acres

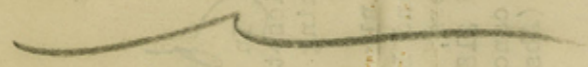
Section 20, Block 20, Certificate 684, HE&WTRRCo., was sold in four tracts: S $\frac{1}{2}$ of Mid part 200 acres; W 40 acres; E part 200 acres, and N $\frac{1}{2}$ of Mid part 200 acres. The S $\frac{1}{2}$ of Mid part was patented all in Lynn county - 200 acres - Abstract 609, File 57320. The West 40 acres (not patented) is abstracted: 20 acres to each county, Abstract No. Lubbock 1283, and Lynn 1174. E part - 200 acres - Patented; 100 acres to each county. Abstract numbers: Lubbock 1396, Lynn 1280. The North $\frac{1}{2}$ of Middle part - 200 acres - Patented, as being all in Lubbock County. Abstract number 1450. You gave this tract 207 acres, but your fieldnotes (dated Mch 4, 1919, recorded in Book 5, page 285,) gives it 200 acres. File 130037.

Section 29, Block 20, Certificate 679, HE&WTRRCo., Abstract number: Lubbock 418, Lynn 600. Patented for 640 acres. The abstract will show: Lubbock 349 acres, Lynn 291. You gave Lubbock only 324 acres. ~~Patented~~ Fannin Scrip 13931.

Section 56, Block 20, Certificate 655, HE&WTRRCo., - S $\frac{1}{2}$, and S $\frac{1}{2}$ & NE $\frac{1}{4}$ of NE $\frac{1}{4}$, (instead of S $\frac{1}{2}$, and S $\frac{1}{2}$ of NE $\frac{1}{4}$, as you have it) 440 acres, abstracted as: Lubbock 1145, Lynn 1438. File 87279. Abstracted as: 218 acres in Lubbock, and 222 acres in Lynn county.

11/ A.L. Harris. 12/3/34 - He may write about these changes in a few days. So do not abstract for 10 or 15 days.

LUBBOCK-LYNN



11/11/34

12/2/34

LYNN COUNTY

HOCKLEY

F. 70442 - Leave off Post. May be affected when Hock. Terry Line is finally adjusted. 5/10/35.

LUBBOCK

ROSSBY

Mr. Harris gives 222 a. 7/8 in Lynn Co. and 178 a. in Lubbock, but has described it as 5/8 a. 5/8 of NE 1/4

Mr. Harris has 324 a. Lubbock & 291 a. Lynn.

Mr. Harris gives 207 a. to the N. 1/2 of 200 a. which is more than Pat. calls for, so 3 here left it 200 a.

Mr. Harris gives the 5/8 324 a. N. 1/2 318 a. was ptd. for 640 a. so 8 here given N. 1/2 318 a. 5/8 324 a.

F. 58952 Part. as: E 1/2 Lubbock 150 a. Lynn 170 a. F. 131865 Part. as: Lubbock - 150 a. Lynn - 170 a. Mr. H. gives Lynn only 333 a.

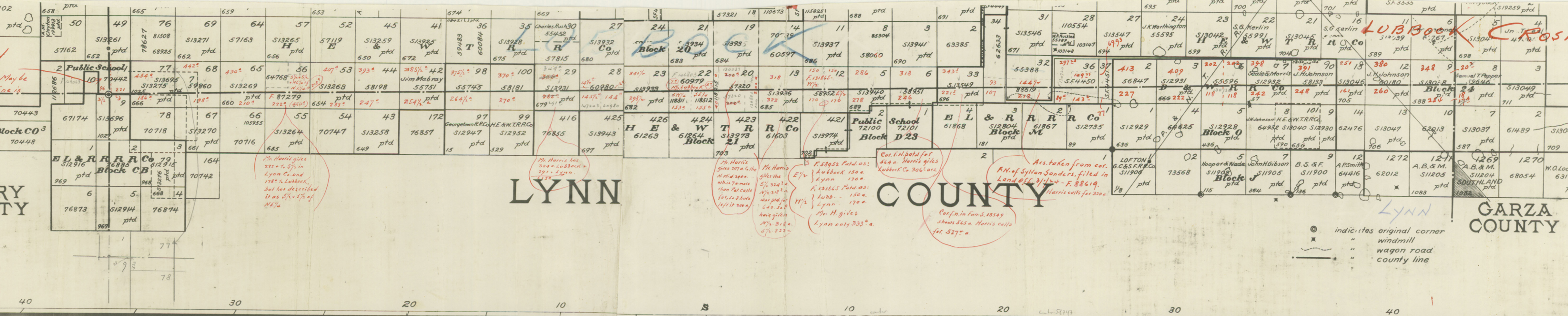
Cor. F.N. ptd. for 564 a. Harris gives Lubbock Co. 306 a. acs.

Ac. taken from cor. F.N. of Sylvan Sanders, filed in Land Off. 3/1/24 - F. 88619. Harris calls for 320 a.

Cor. F.N. in F.N. S. 13549 shows 545 a. Harris calls for 527 a.

⊙ indicates original corner
⊙ " " windmill
- - - " " wagon road
- - - " " county line

Traced by
H.M. Bramlette
April 12, 1915.



40

30

20

10

5

10

20

30

40

50

